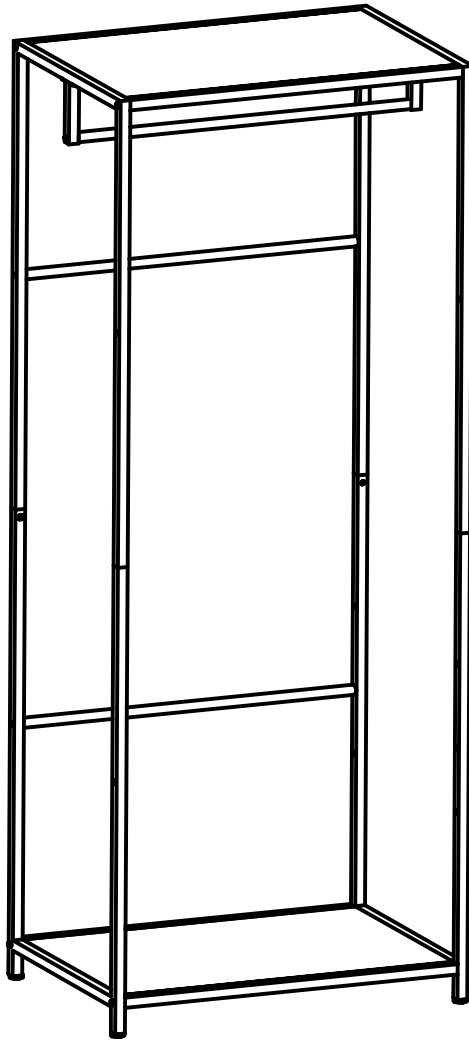


## OWNER'S MANUAL

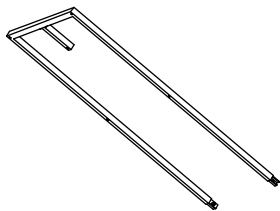


**30" X 20" X 72" BAMBOO GARMENT RACK  
- BRONZE ANTHRACITE**

## PARTS LIST

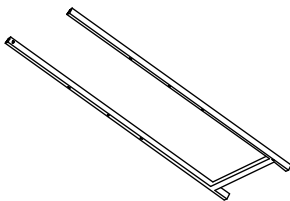
Your 30" x 20" x 72" Bamboo Garment Rack should include the following parts. Please inspect box contents to ensure you have received all components.

A



**TOP SIDE  
FRAME (2)**

B



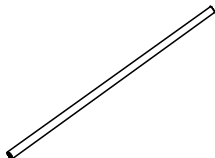
**BOTTOM SIDE  
FRAME (2)**

C



**FIXED SHELF (2)**

D



**HANGING ROD (3)**

E



**SCREW (14)**

F



**FRAME CONNECTING  
SCREW (4)**

G



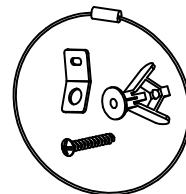
**FEET  
LEVELER (4)**

H



**HEX KEY (1)**

I

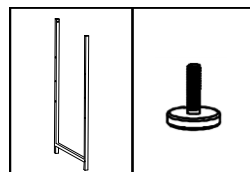


**ANTI-TIPPING  
KIT (2)**

# ASSEMBLY INSTRUCTIONS

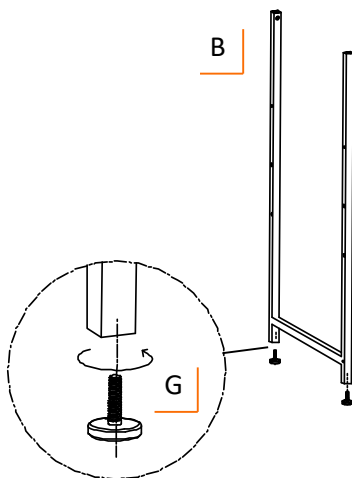
## STEP 1

Screw FEET LEVELERS (G) into the bottoms of each BOTTOM SIDE FRAME (B). Turn clockwise to screw in place.



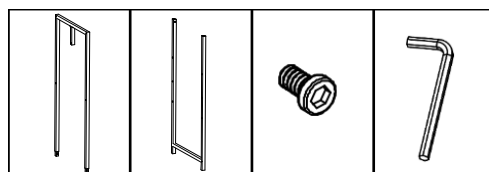
B (2)

G (4)



## STEP 2

Connect TOP SIDE FRAME (A) with BOTTOM SIDE FRAME (B). Using the included HEX KEY (H), screw 1 FRAME CONNECTING SCREW (F) into each hole where BOTTOM SIDE FRAME (B) is connected with TOP SIDE FRAME (A). Repeat for remaining FRAME CONNECTING SCREWS (F).

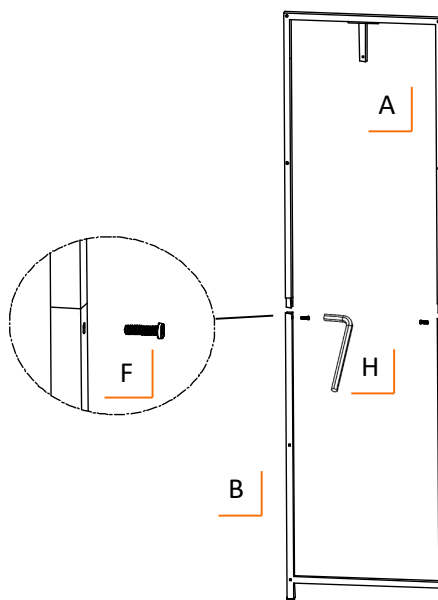


A (2)

B (2)

F (4)

H (1)

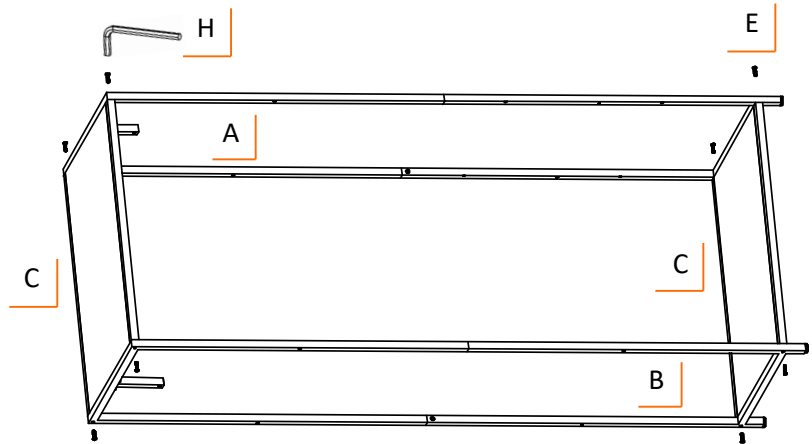
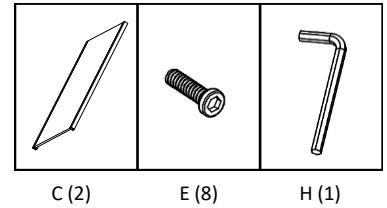


# ASSEMBLY INSTRUCTIONS

## STEP 3

Place FIXED SHELVES (C) on their sides and connect them to TOP & BOTTOM SIDE FRAMES (A & B) assembled at STEP 2, fasten SCREWS (E) into frame screw holes by HEX KEY (H).

Stand the unit upright.

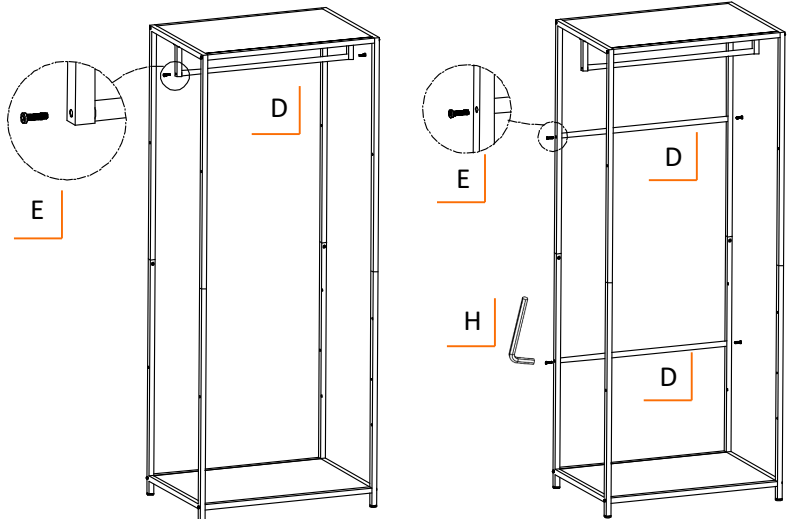
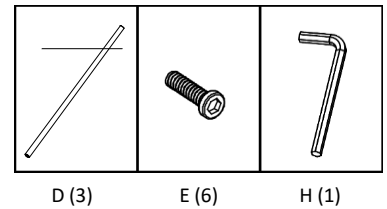


## STEP 4

Place 1 HANGING ROD (D) between 2 hanger sticks on TOP SIDE FRAME (A), fasten SCREWS (E) into screw holes by HEX KEY (H).

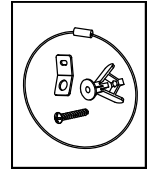
Place 1 HANGING ROD (D) on  $\frac{1}{4}$  of frame height from shelf top, fasten SCREWS (E) into screw holes by HEX KEY (H).

Place 1 HANGING ROD (D) on  $\frac{1}{4}$  of frame height from shelf bottom, fasten SCREWS (E) into screw holes by HEX KEY (H).



# ASSEMBLY INSTRUCTIONS

## STEP 5

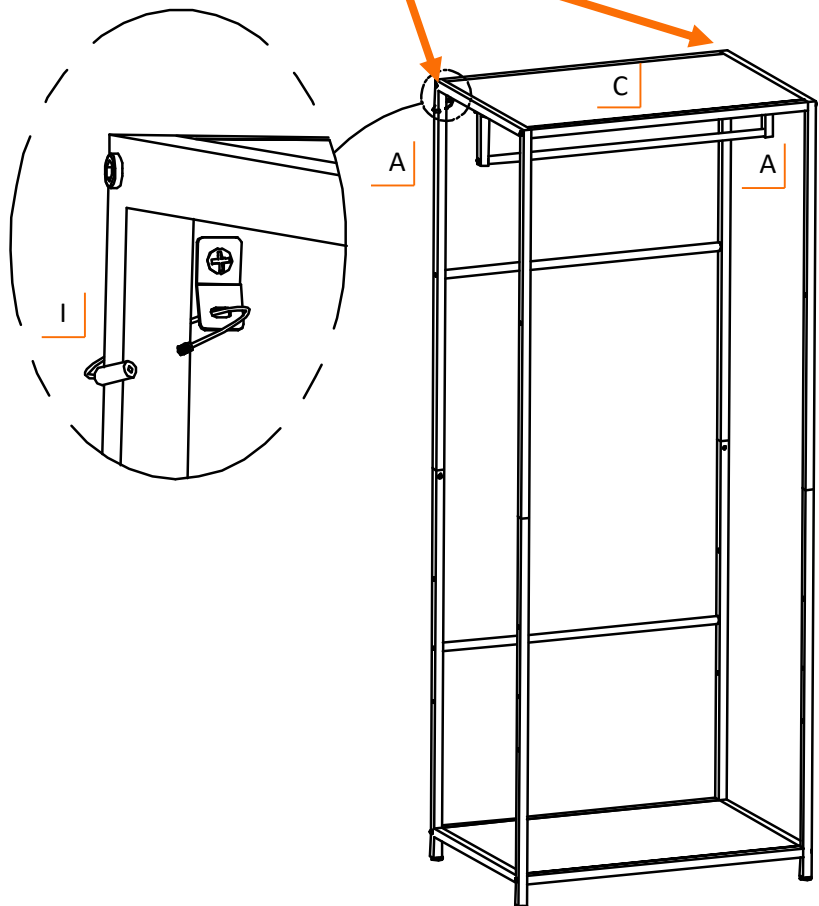
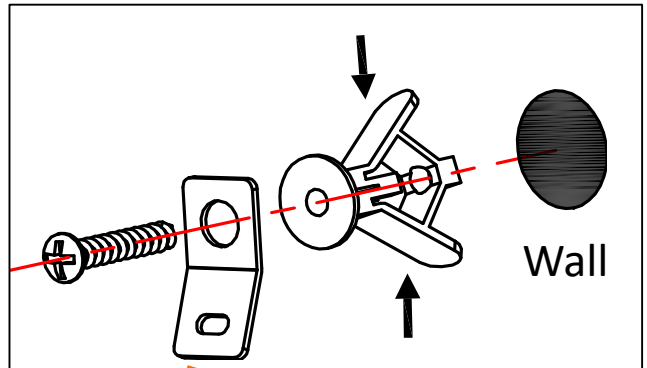


I (2)

To install the ANTI-TIPPING KIT (I), place BAMBOO GARMENT RACK against the wall. Mount bracket to the wall, next to outer TOP SIDE FRAME (A) just below the top FIXED SHELF (C).

First, fully secure ANTI-TIPPING KIT (I) to the wall.

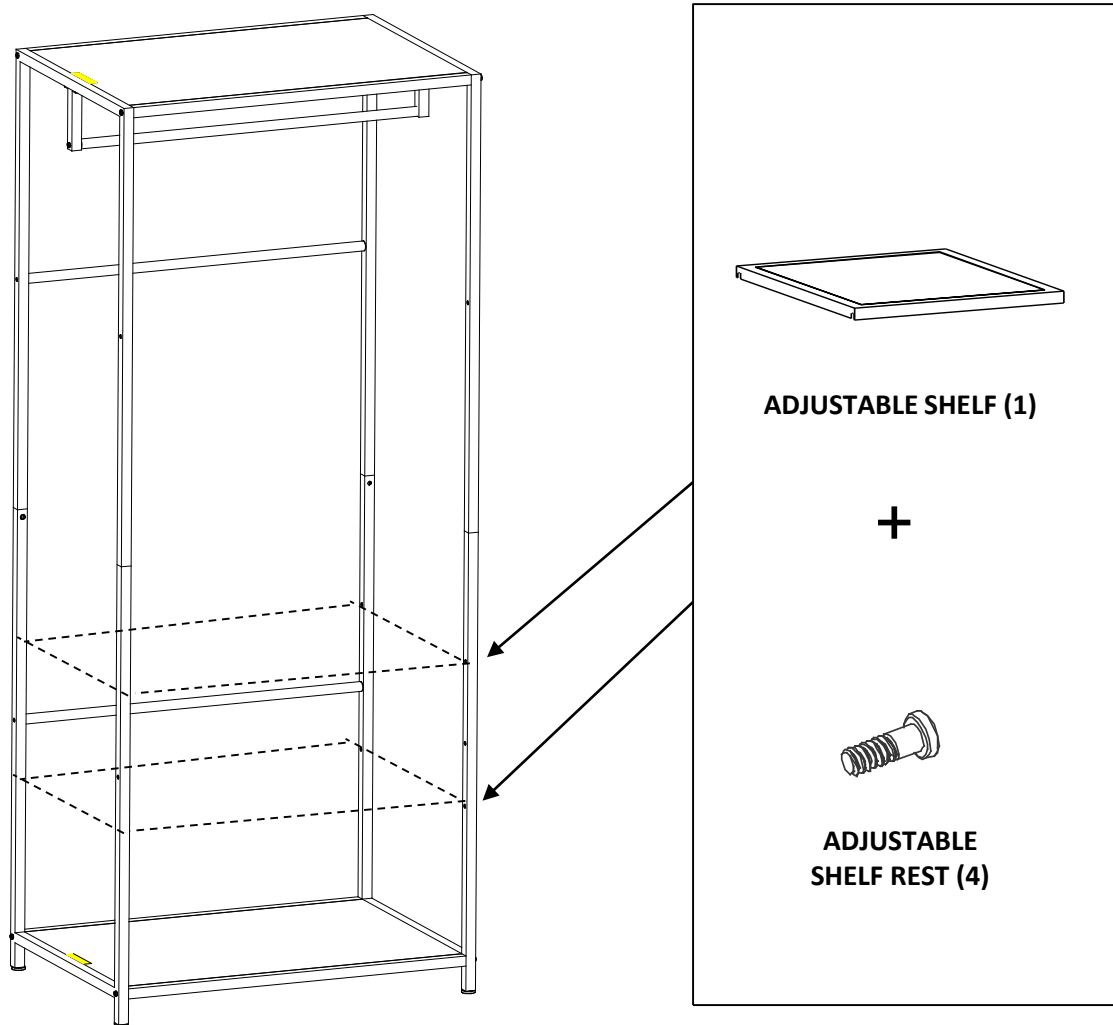
Next, close cable loop through TOP SIDE FRAME (A) as shown.



## PRODUCT EXTRA SHELF OPTIONS

There are extra screw holes in this product for more ADJUSTABLE SHELVES. You will need 1 ADJUSTABLE SHELF and 4 ADJUSTABLE SHELF RESTS to add one extra shelf to the product.

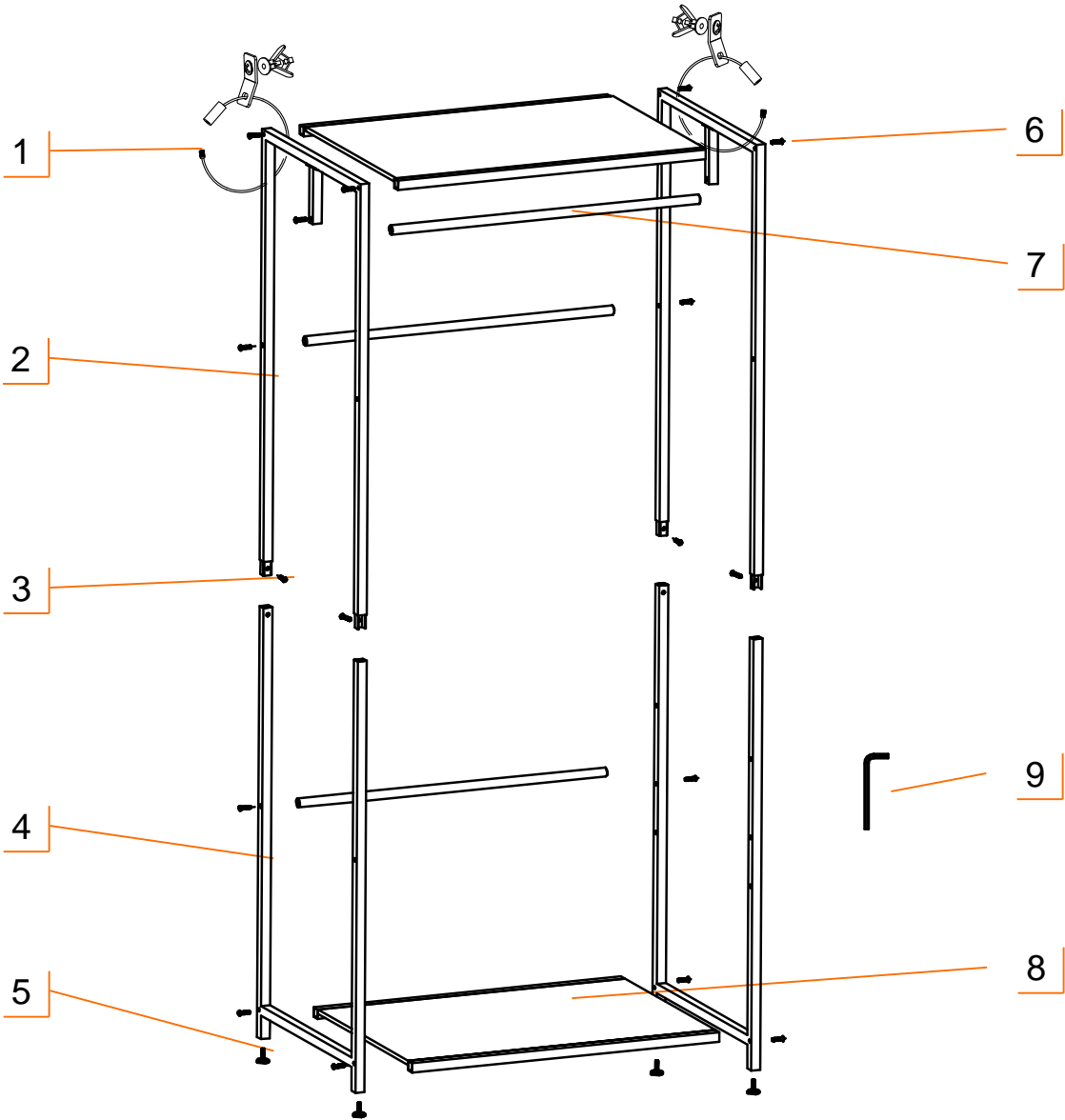
Extra ADJUSTABLE SHELF and ADJUSTABLE SHELF REST are available for purchasing.



# SERVICE PARTS LIST

Customer Service provides the following replacement parts:

Description		Description	
1)	Anti-tipping kit	6)	Screw
2)	Top Side Frame	7)	Hanging Rod
3)	Frame Connecting Screw	8)	Fixed Shelf
4)	Bottom Side Frame	9)	Hex Key
5)	Feet Leveler		



---

## WARNINGS

1. **Read and understand all instructions.** Failure to follow all instructions may result in injury and/or damage.
2. **Use the provided anti-tipping kits to secure the product to the wall to prevent the product from tipping over.**
3. **The warnings, cautions, and instructions discussed in this manual cannot cover all possible conditions or situations that may occur.** The user must always be aware of their environment and ensure that they use the product in a safe and responsible manner.
4. **Do NOT modify the product in any way.** Unauthorized modification may impair the function and/or safety of the product, and may affect the life of the product.
5. **Check for damaged parts.** Before using this product, carefully check that all parts are in good condition, and that the product will operate properly and perform its intended function. Check for damaged parts and any other conditions that may affect the operation of this product. Replace damaged or worn parts, and never use this product with a damaged part.
6. **Do NOT overload the product.**

Weight capacity of Hanging Rod (evenly distributed)	50 lb
Weight capacity per shelf (evenly distributed)	75 lb

7. **Do NOT allow children to climb or play around the product.**

---

## CARE AND MAINTENANCE

- Bamboo can be maintained with mineral oil for best results.
- Avoid harsh, abrasive cleaners, and other corrosive chemicals.
- The product is designed for indoor use. Wipe dry and keep out of direct sunlight.



# PRODUCT REGISTRATION

Thank you for purchasing a 30" x 20" x 72" Bamboo Garment Rack.

First Name: \_\_\_\_\_ Last Name: \_\_\_\_\_

Address: \_\_\_\_\_

City: \_\_\_\_\_ State: \_\_\_\_\_ Zip Code: \_\_\_\_\_

Email Address: \_\_\_\_\_ Phone: \_\_\_\_\_

Product Model #: \_\_\_\_\_ Purchase Date: \_\_\_\_ / \_\_\_\_ / \_\_\_\_

Location of Purchase: \_\_\_\_\_

Please rate the importance of each feature (1=least important; 10=most important)

Quality \_\_\_\_ Price \_\_\_\_ Size/Capacity \_\_\_\_ Appearance \_\_\_\_ Other \_\_\_\_

How did you hear about our product?

- ☐ Magazine Ad    ☐ Catalog    ☐ Salesperson    ☐ Word of Mouth  
☐ Internet    ☐ Store Display    ☐ Other

Marital Status:                      ☐ Single                      ☐ Married

Household Income:              ☐ Below \$50,000    ☐ \$50,000-\$150,000    ☐ \$150,000+

Education:                      ☐ High School    ☐ College    ☐ Graduate School

Primary Residence:              ☐ Own                      ☐ Rent

Comments/Suggestions:



---

## LIMITED WARRANTY

30" x 20" x 72" Bamboo Garment Rack

### LIMITATION OF REMEDIES AND LIABILITY

---

## **CONTACT US**

**QUESTIONS? NEED PARTS?  
WE ARE HERE TO HELP!**

**Please feel free to contact us. There are no questions too small, or any problems too big. We're committed to providing our customers with the highest level of service.**