

Install parts



A

x22(+2)



B

x22(+2)



C

x18(+2)



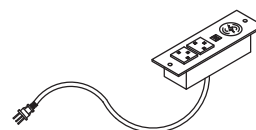
D

x11



E

x2



F

x1



G

x36(+2)



H

x2



I

x4



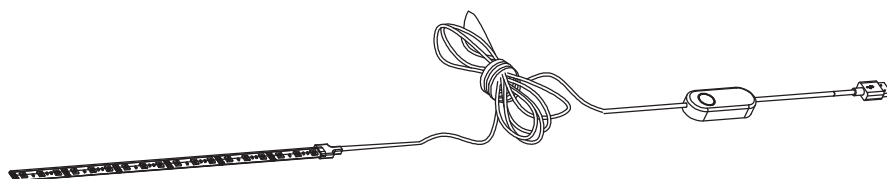
J

x2



K

x4



L

x1



M

x1(+1)



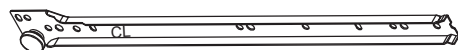
N

x1(+3)



O

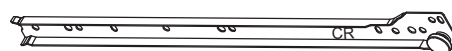
x1(+1)



CL

x2

300mm



CR

x2

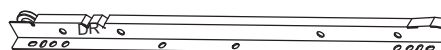
300mm



DL

x2

300mm

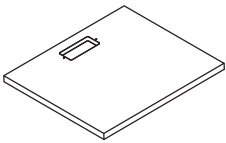


DR

x2

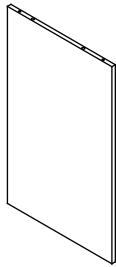
300mm

Mounting frame



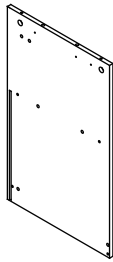
1

x1



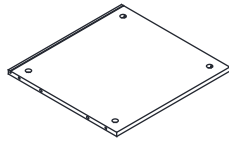
2

x1



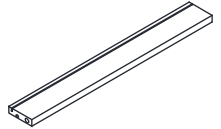
3

x1



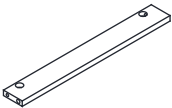
4

x1



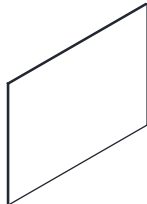
5

x1



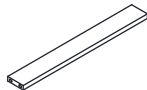
6

x1



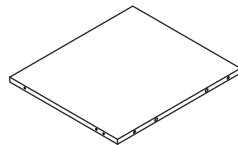
7

x1



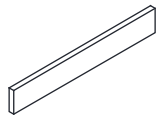
8

x1



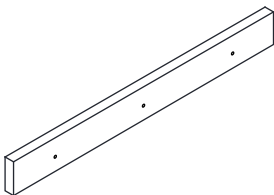
9

x1



10

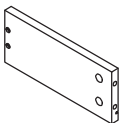
x1



16

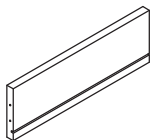
x1

Drawer



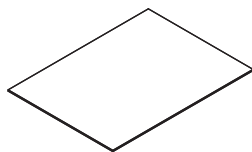
11

x2



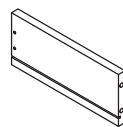
12

x2



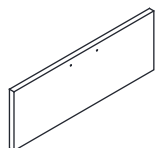
13

x2



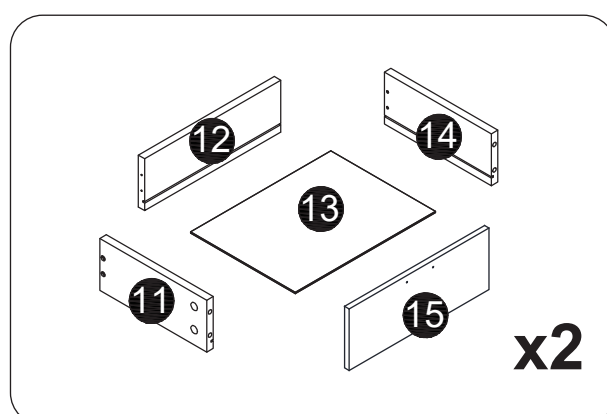
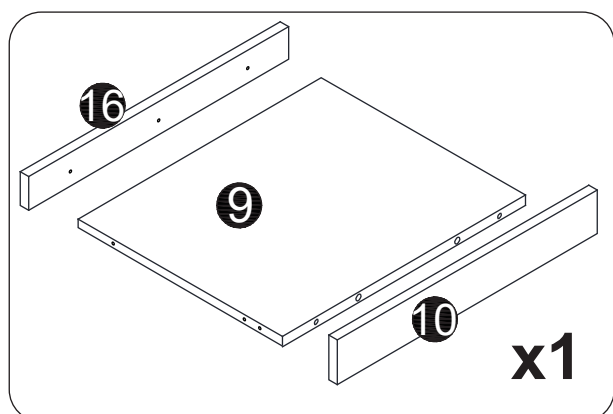
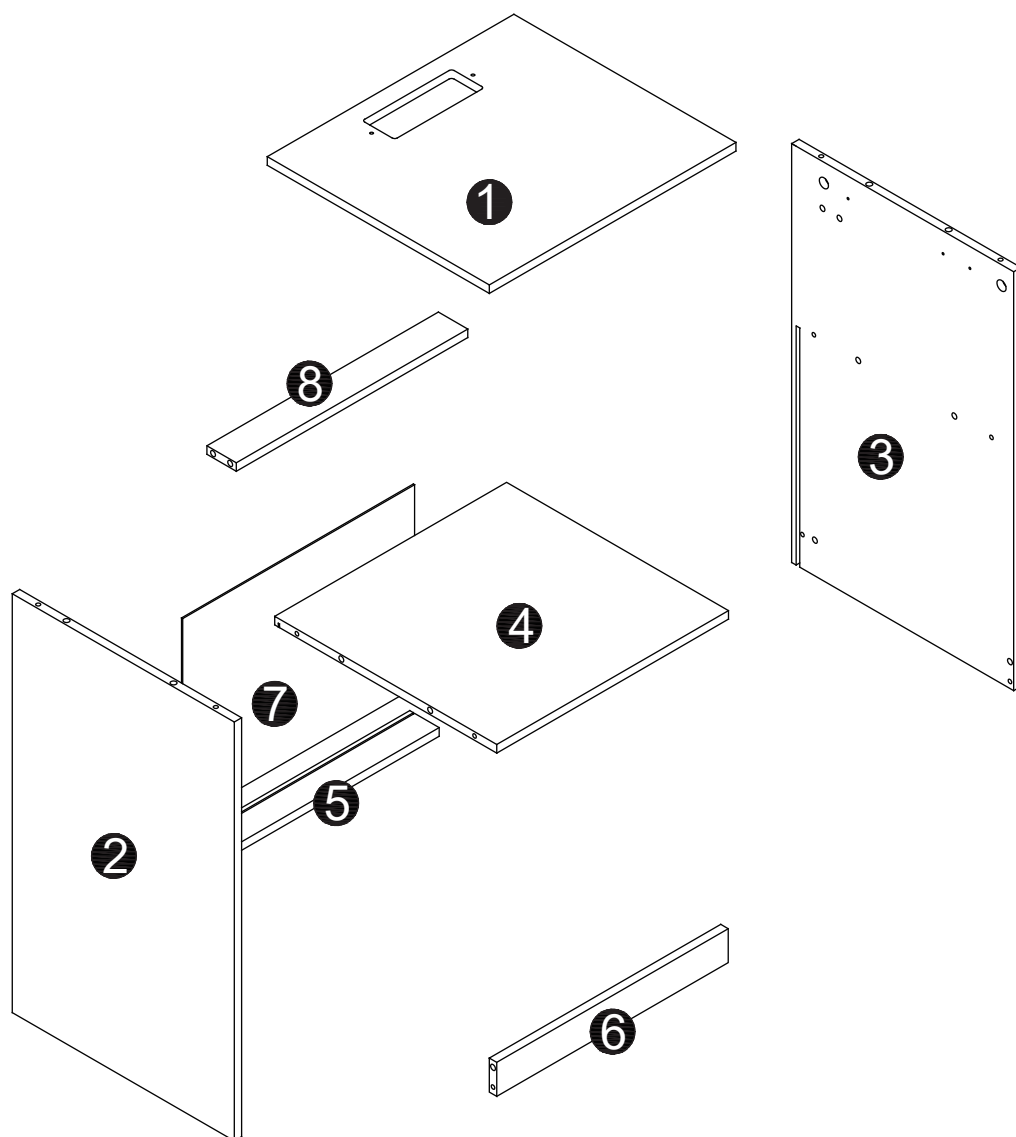
14

x2

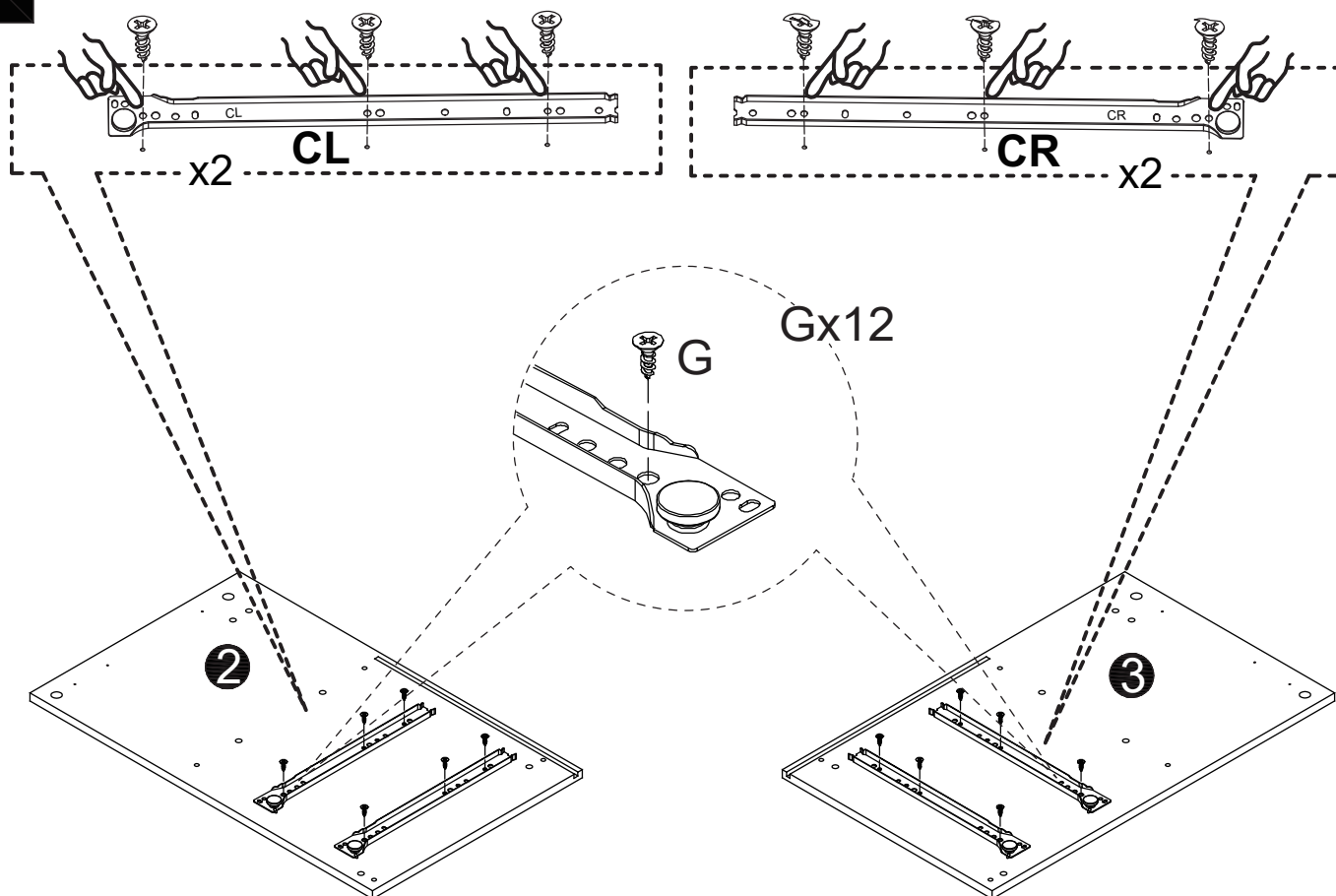


15

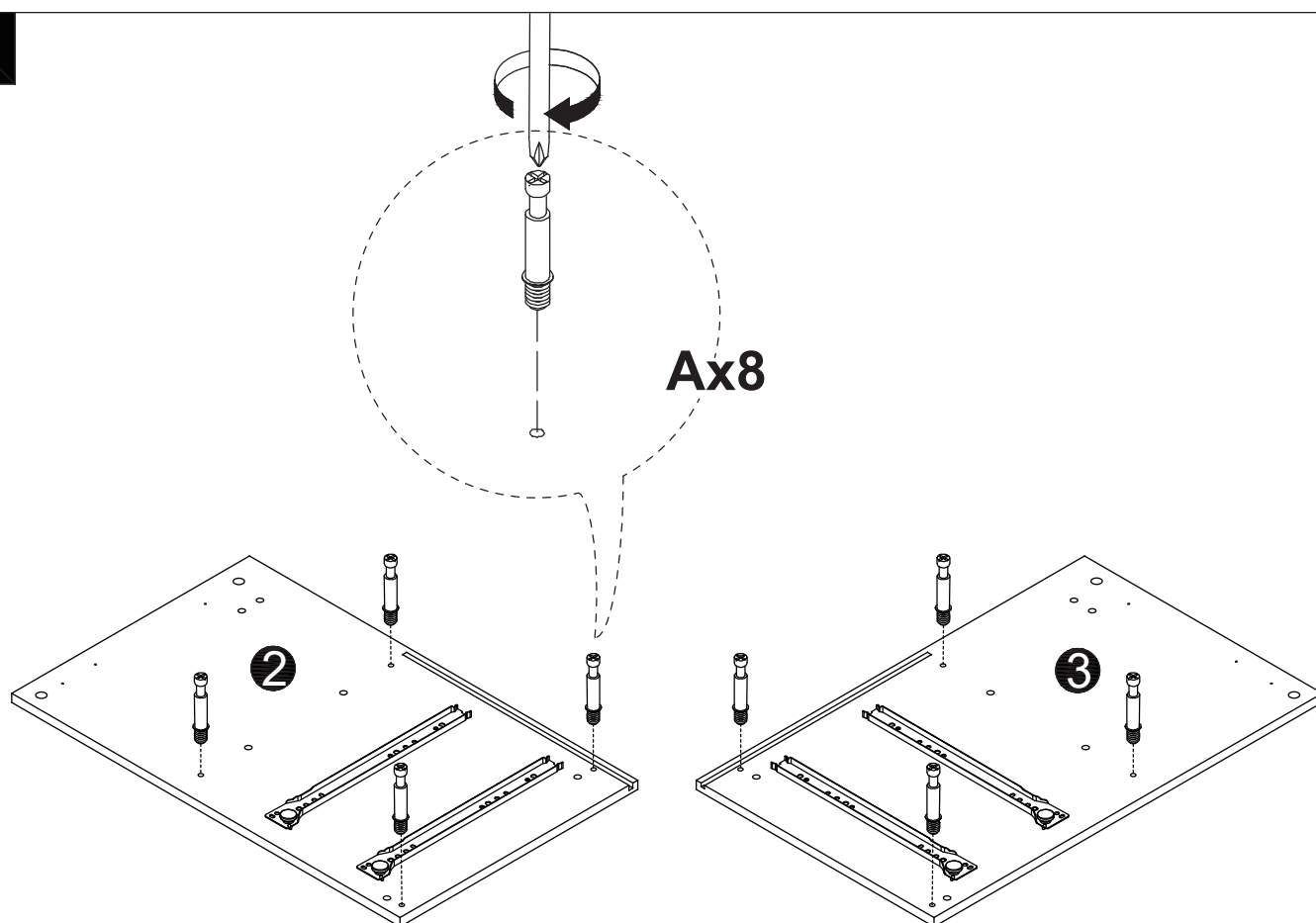
x2

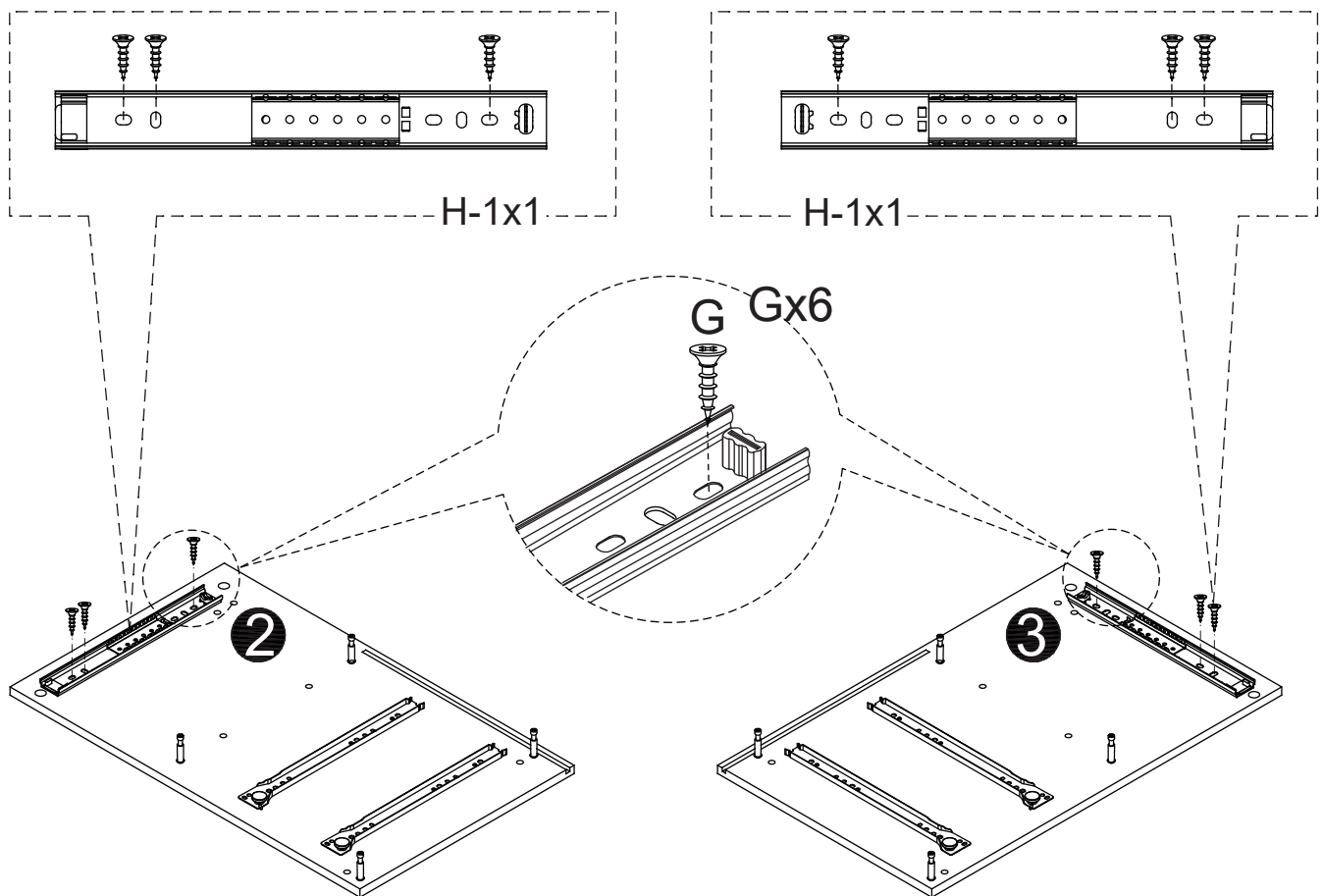
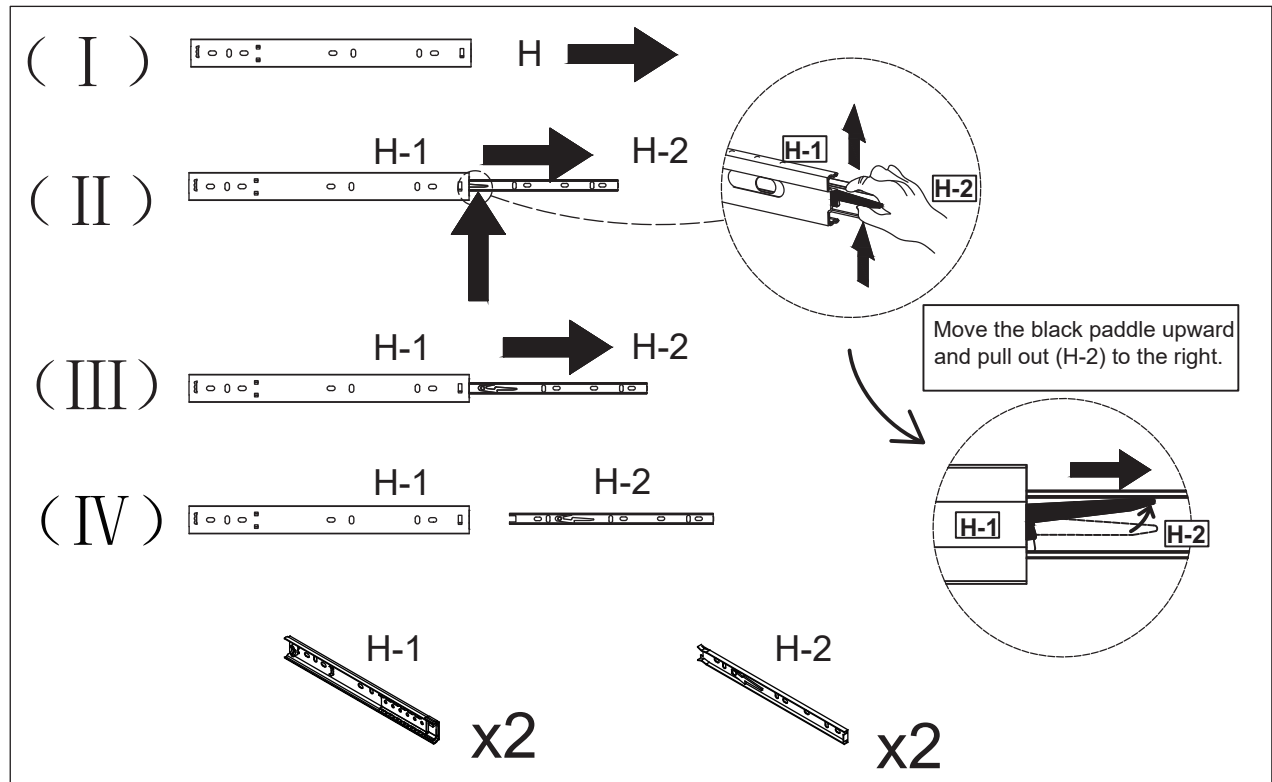


1

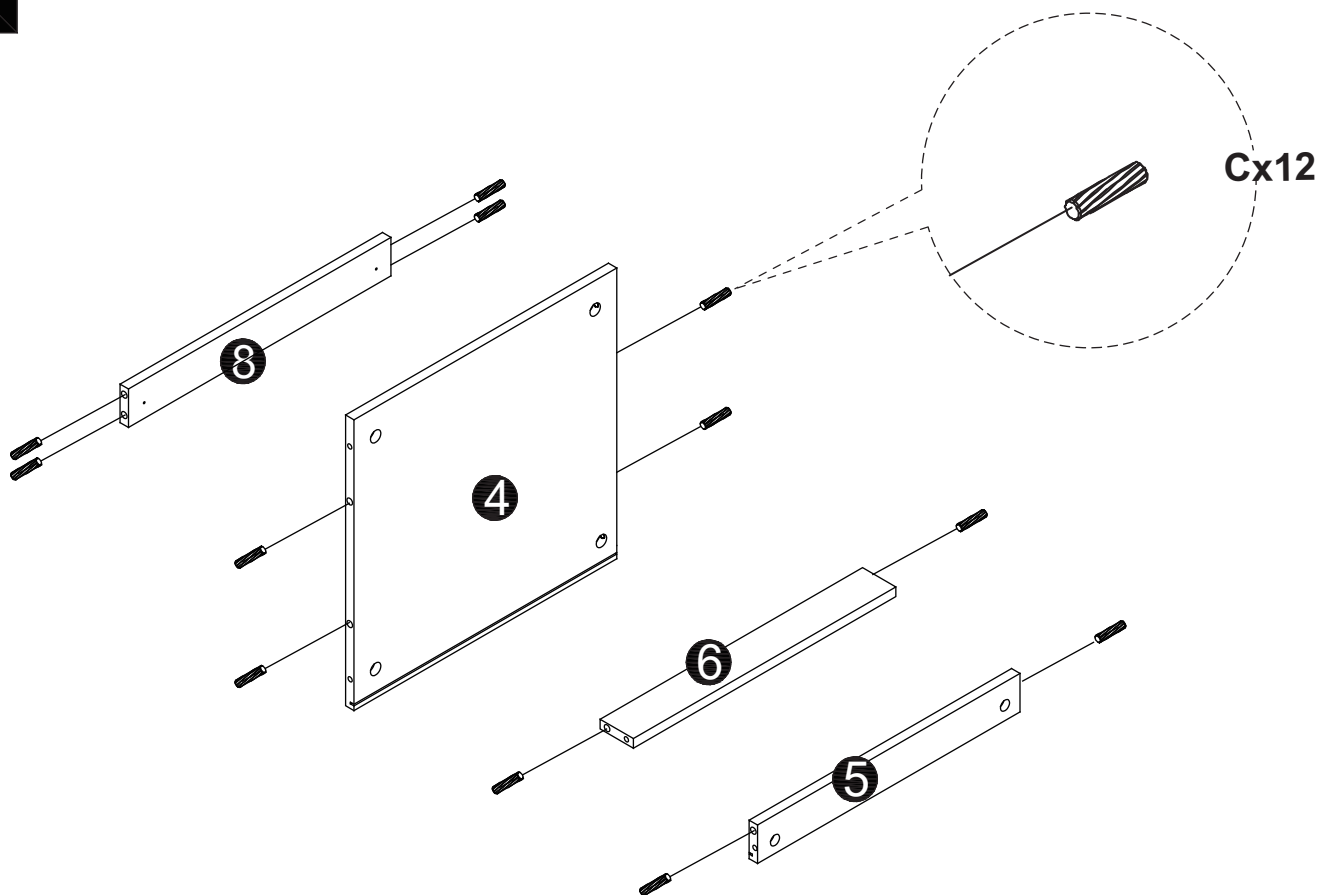


2

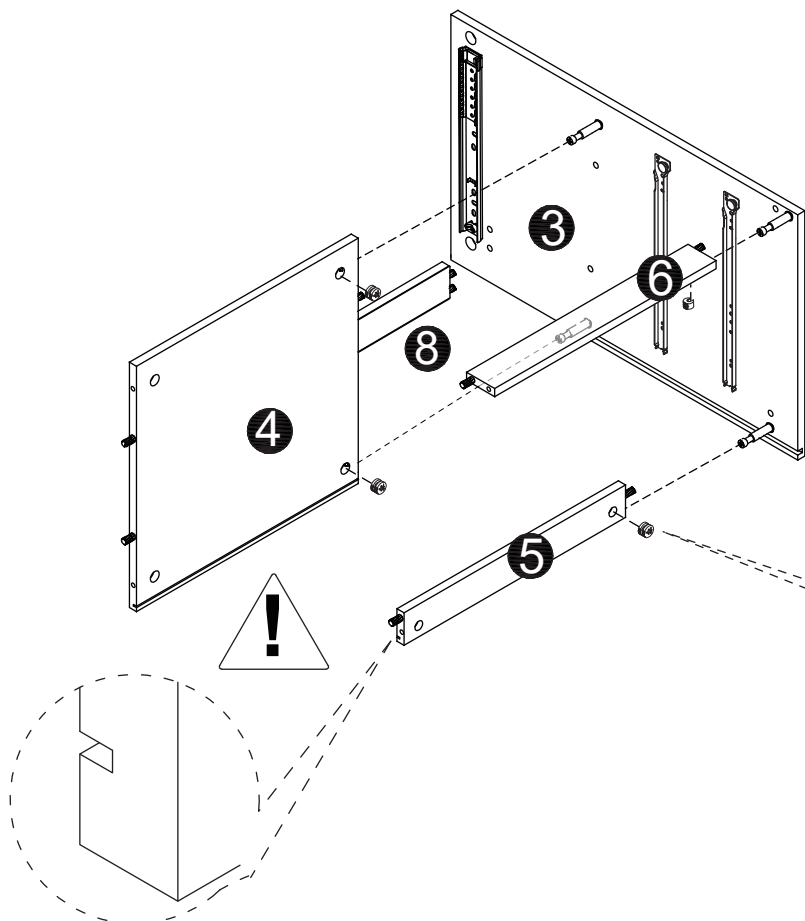
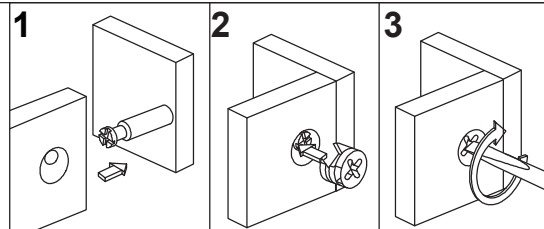




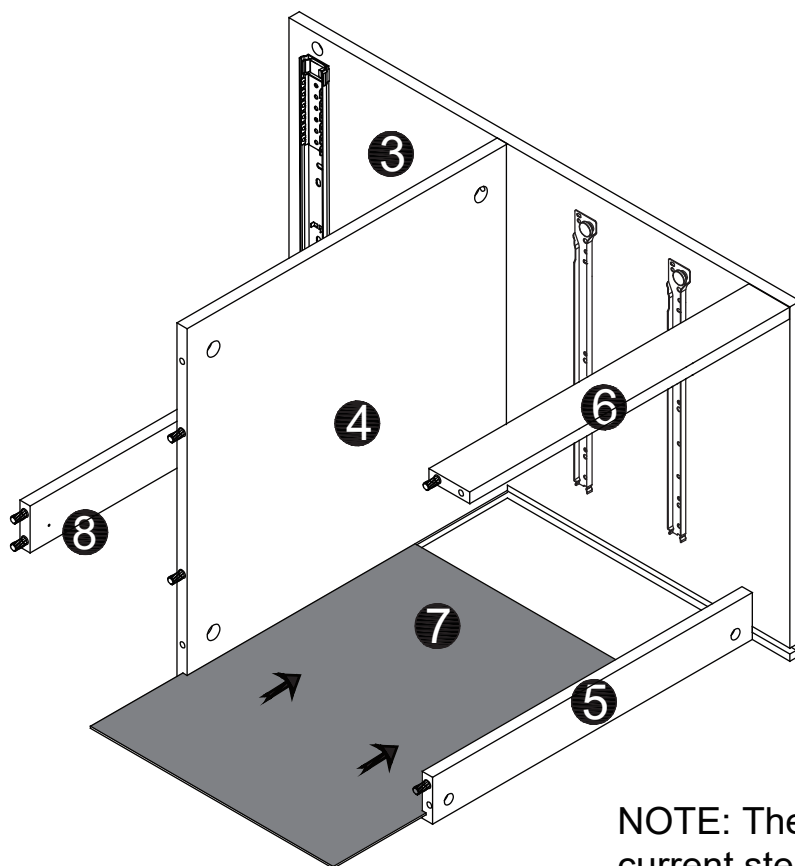
4



5

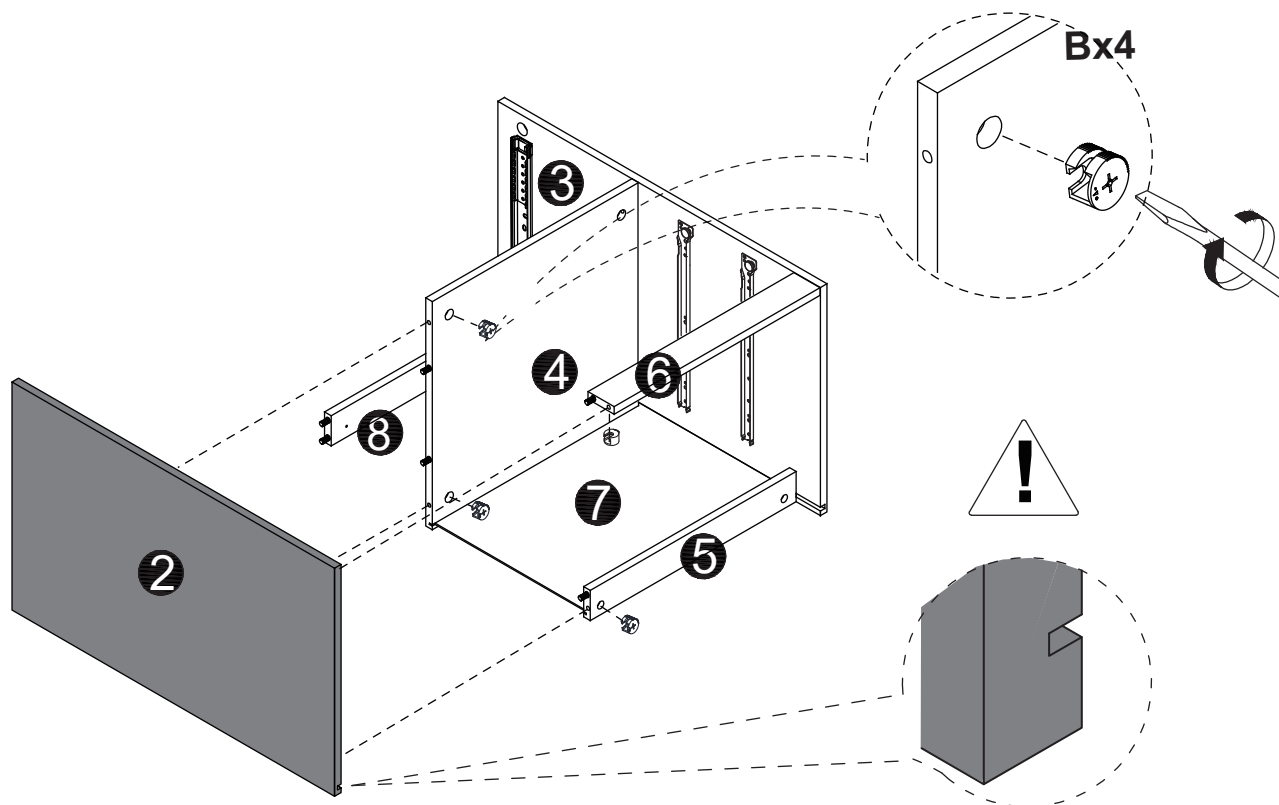


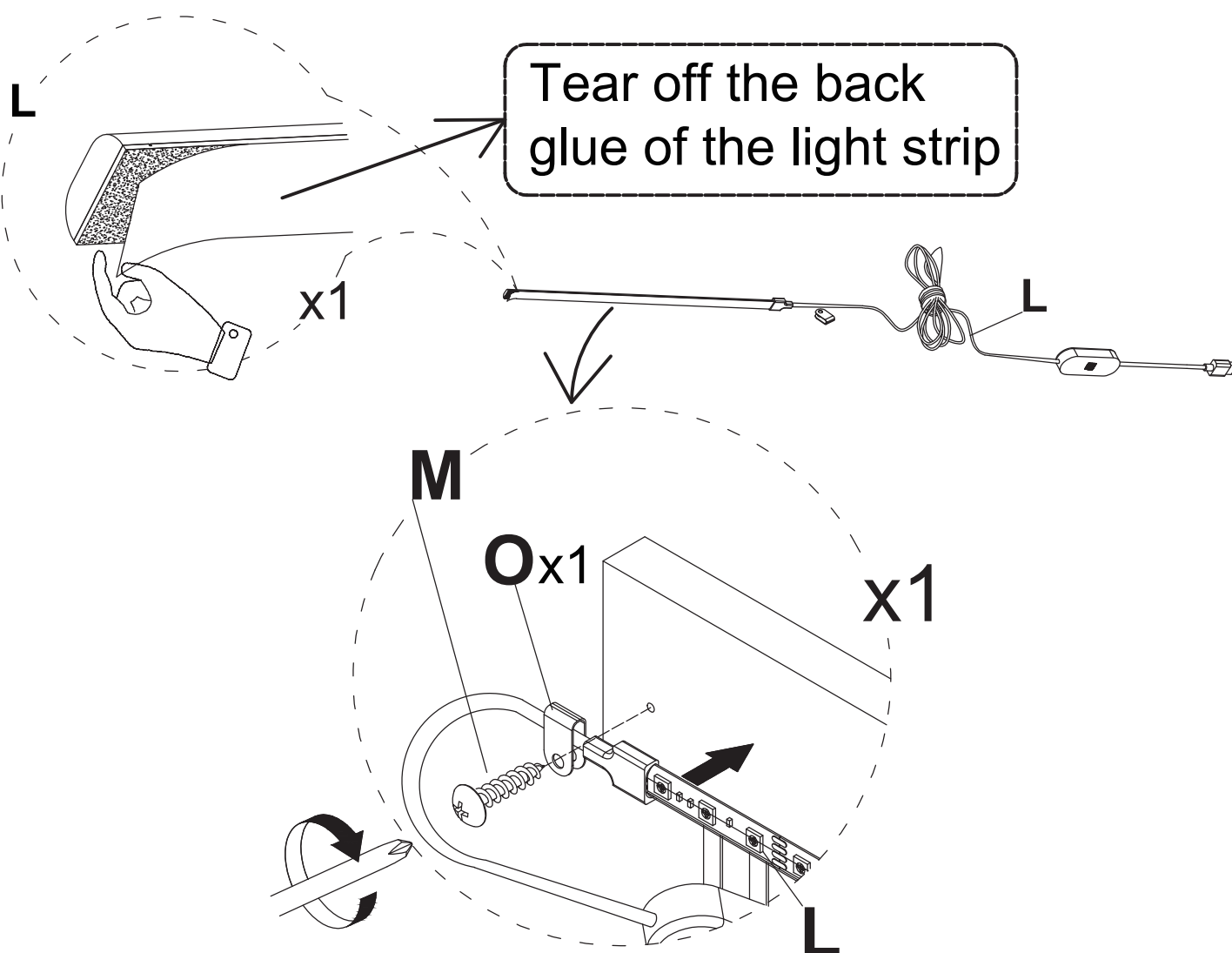
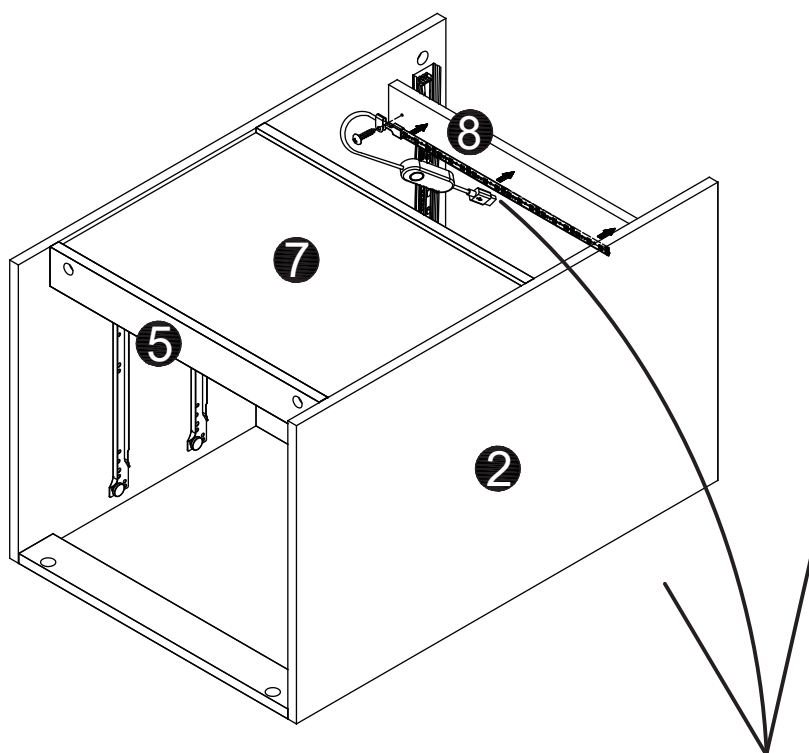
6



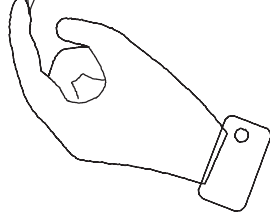
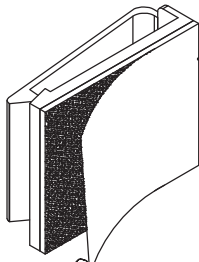
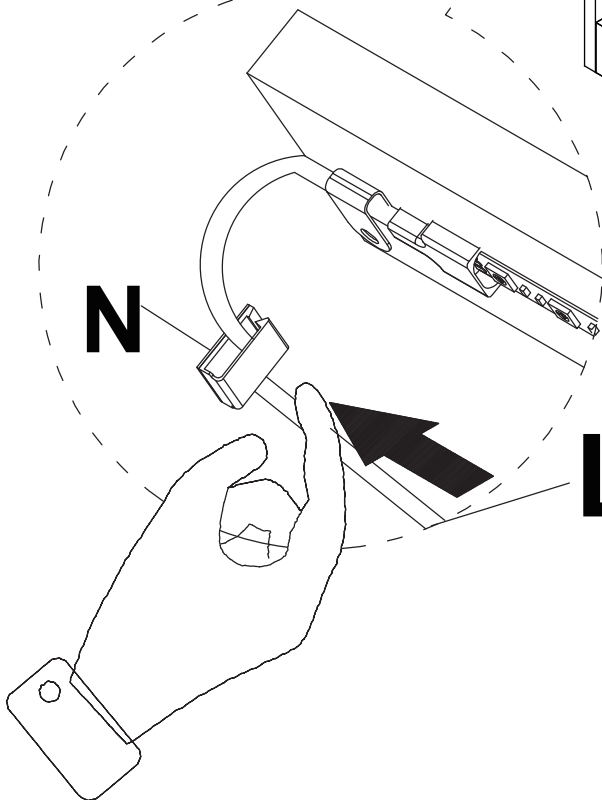
NOTE: The board to be installed in the current step is darkened in color

7

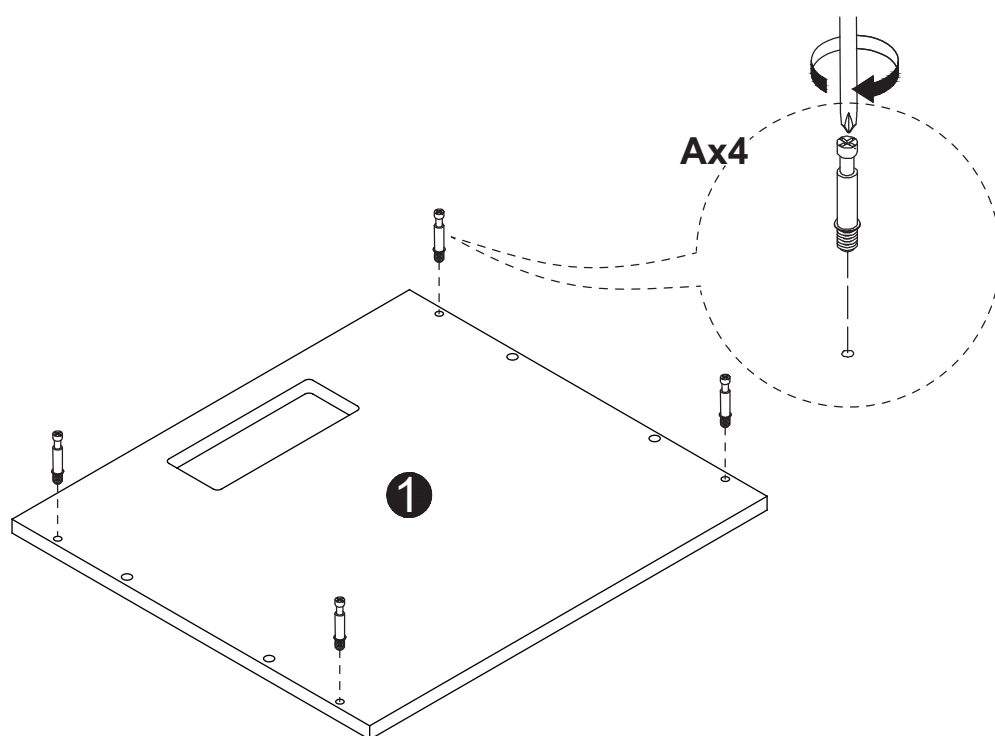




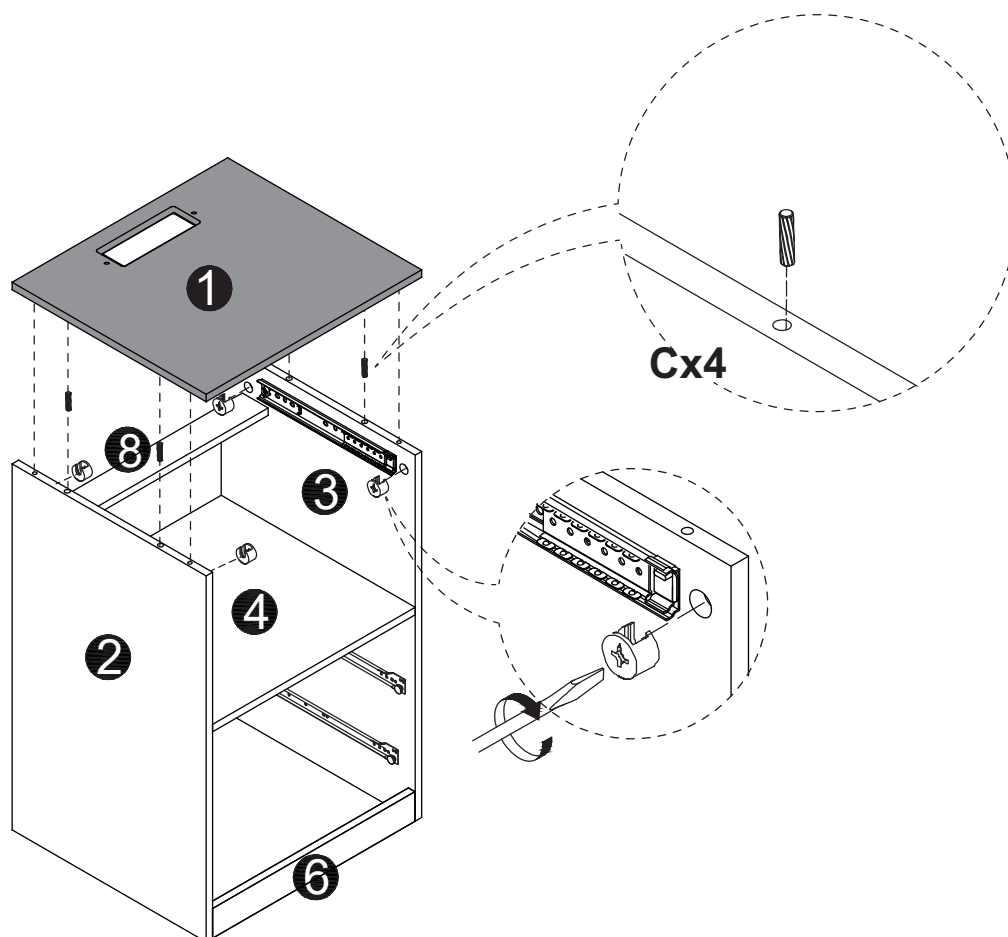
Tear off the back glue
of the plastic fastener

N**2****8****N****3****N****L**

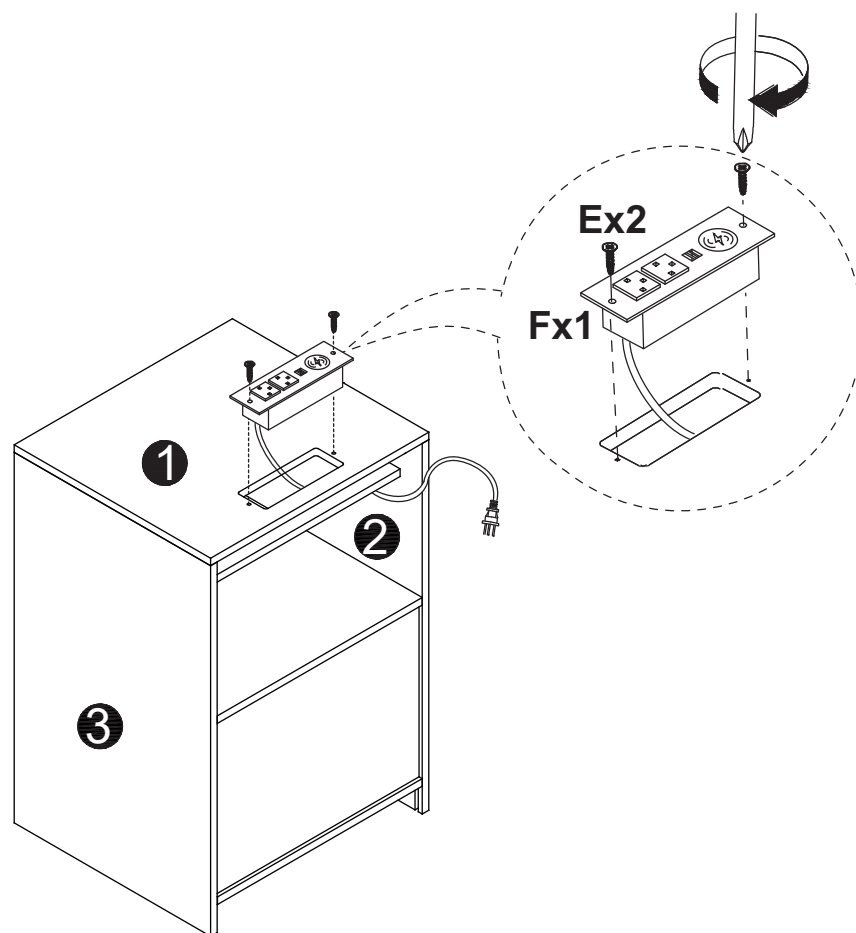
10



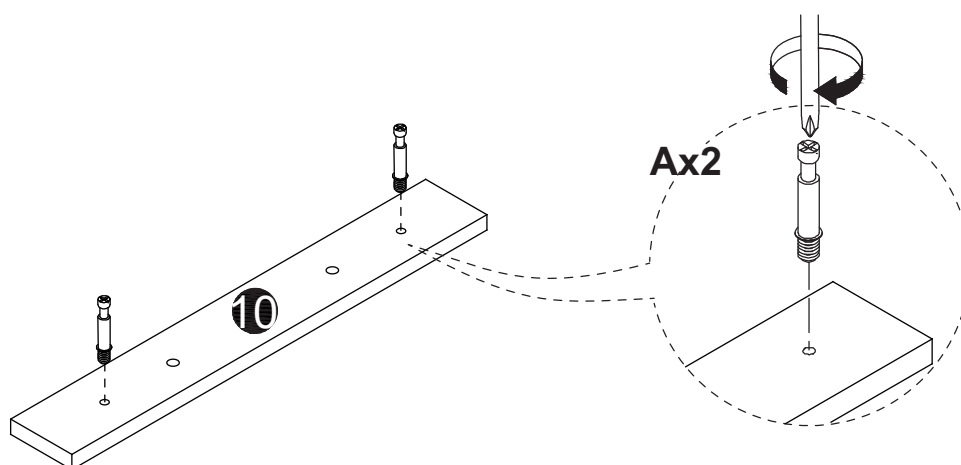
11



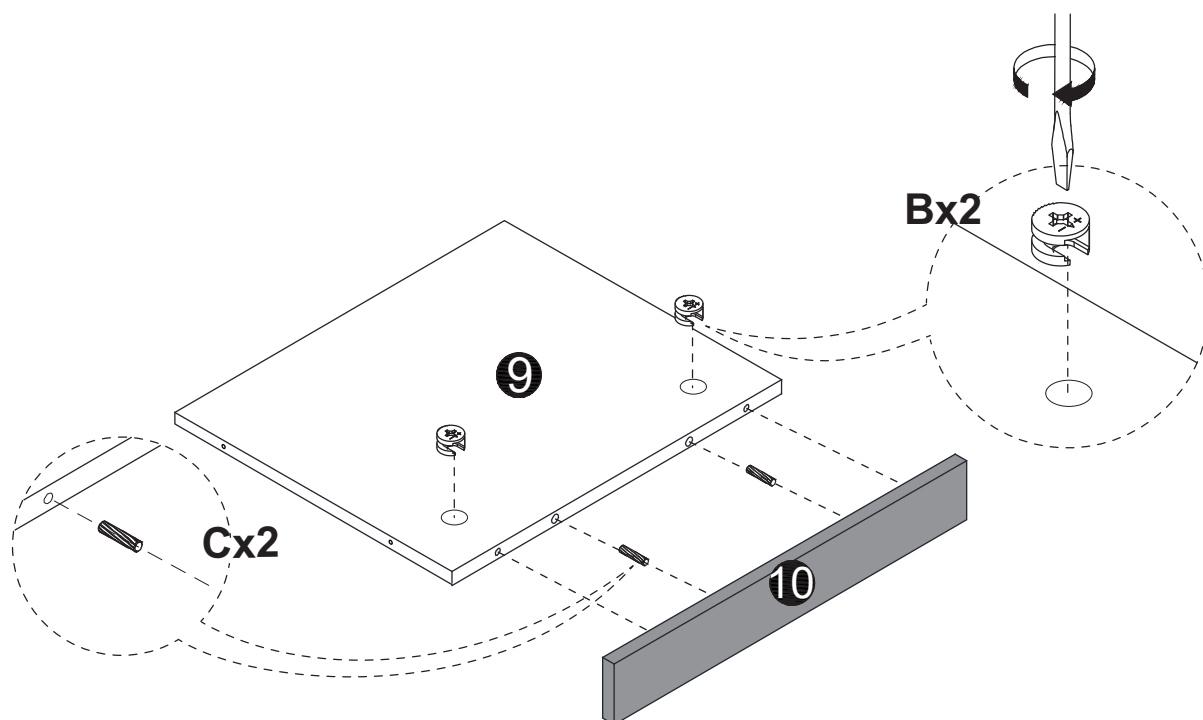
12



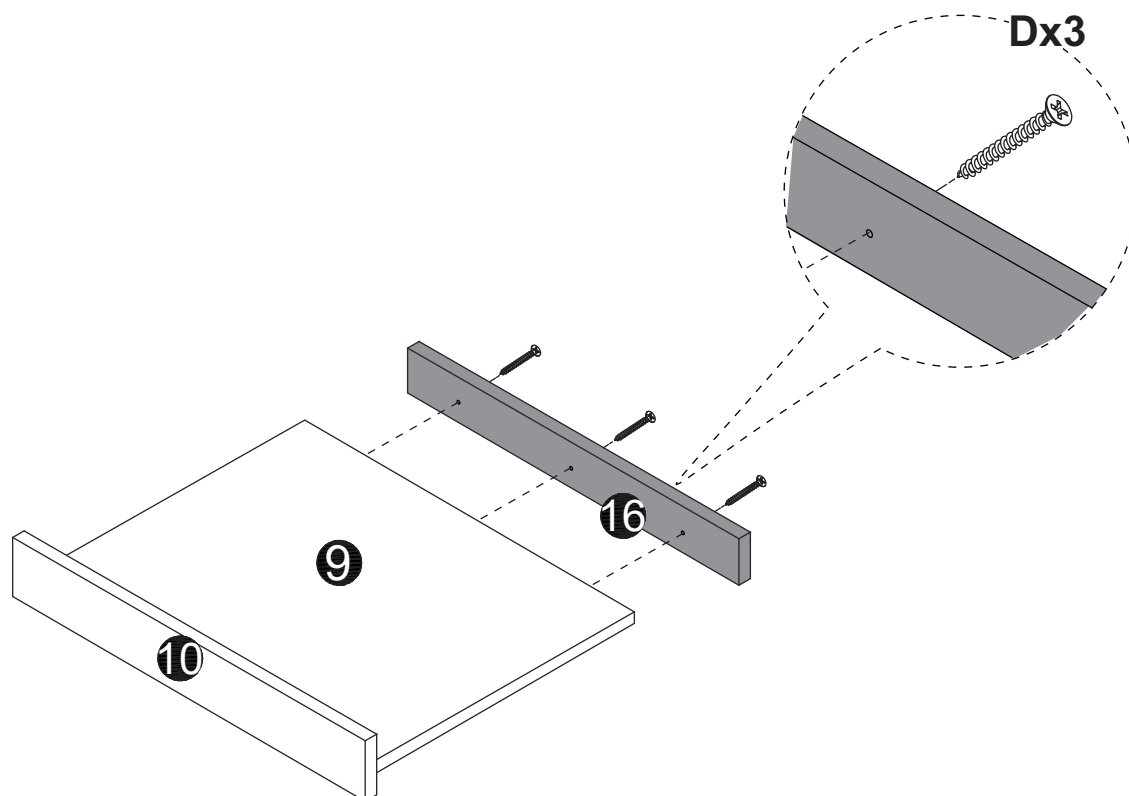
13



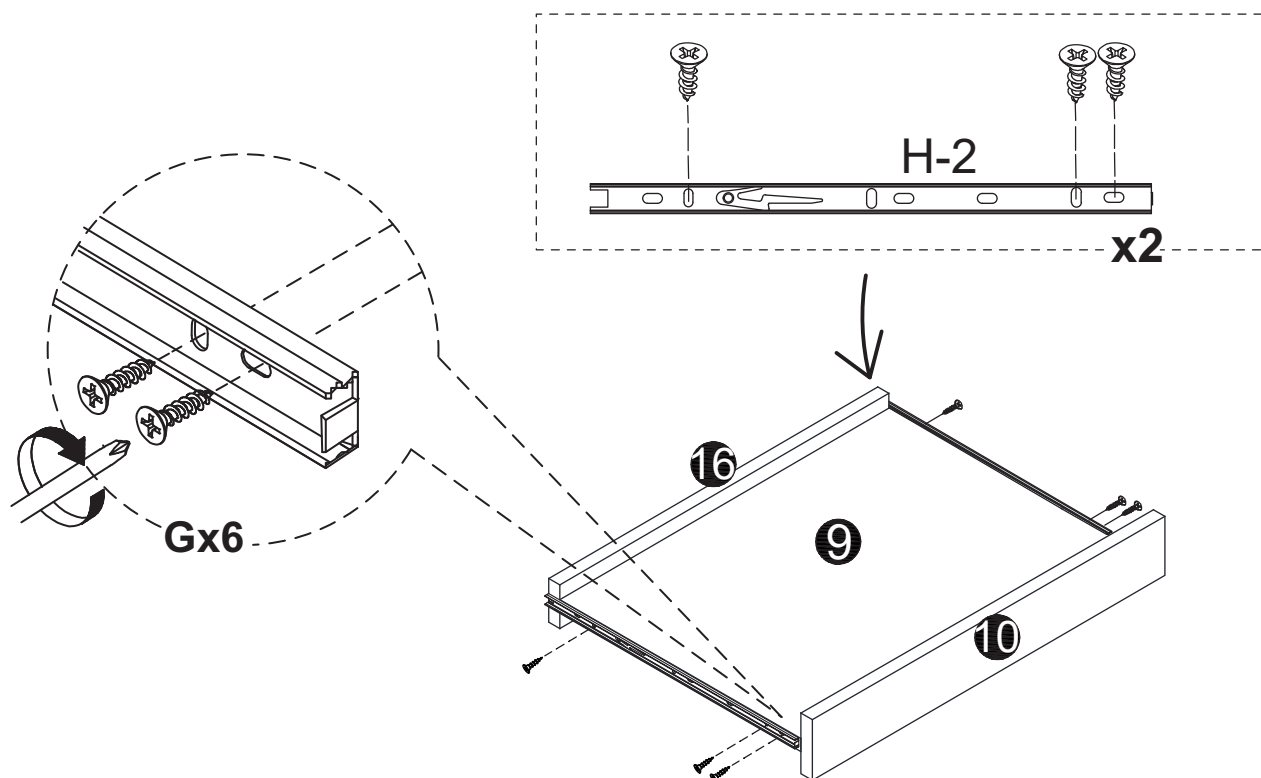
14



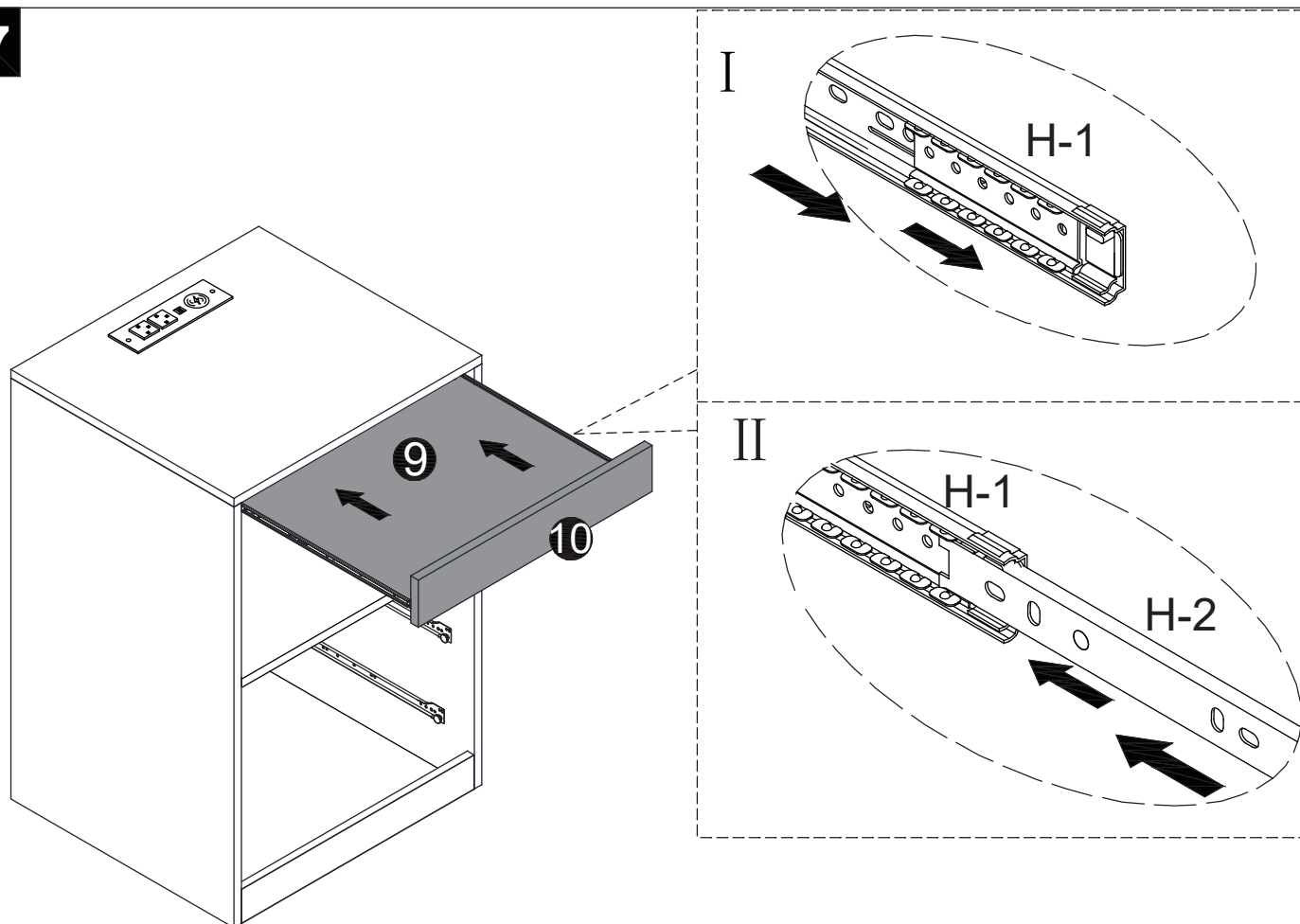
15



16



17

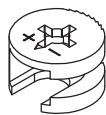


Drawer



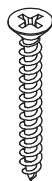
A

x8



B

x8



D

x8



G

x12



I

x4



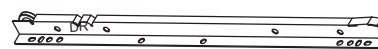
N

x2



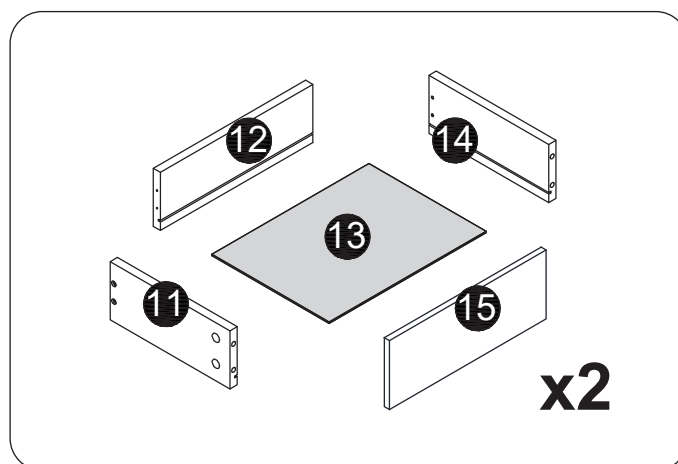
DL

x2

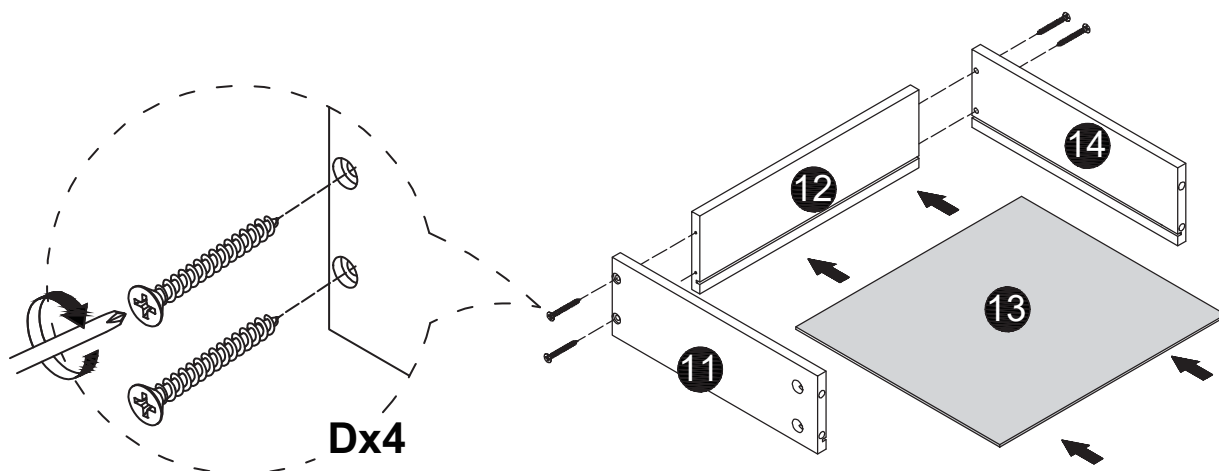


DR

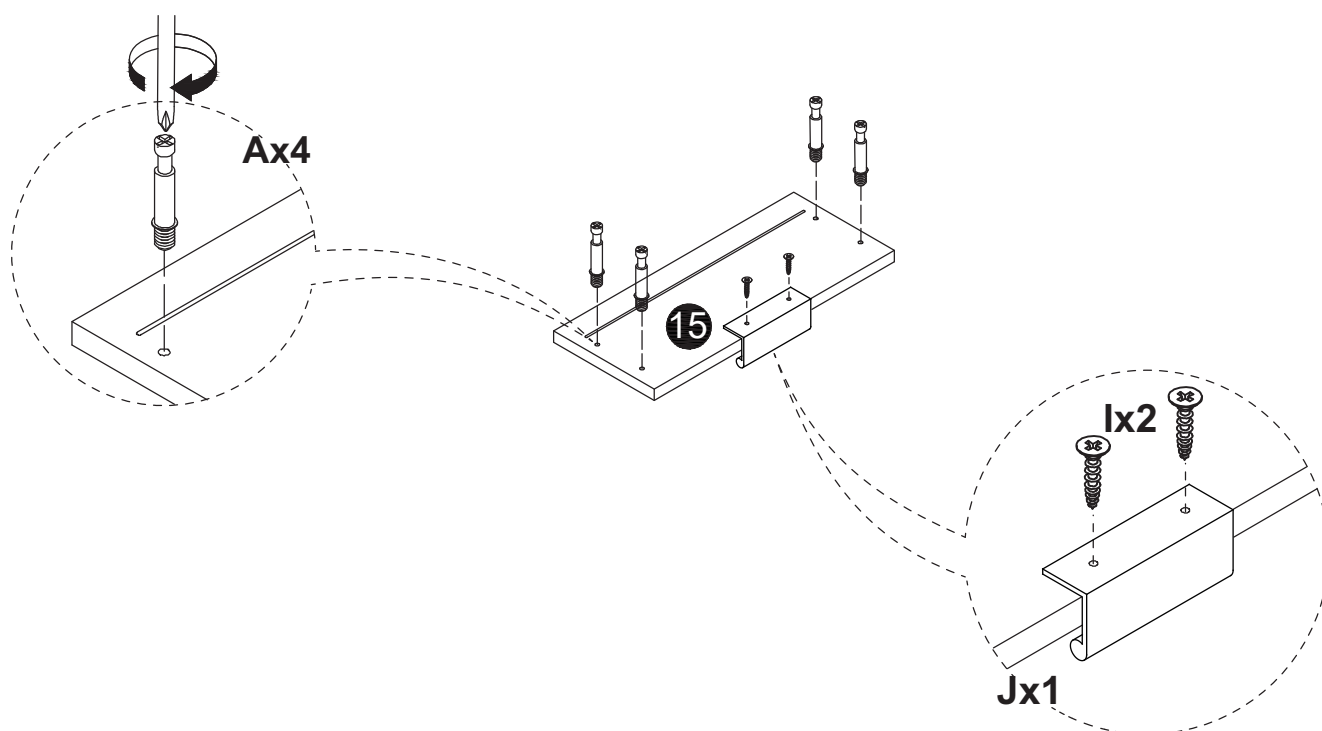
x2

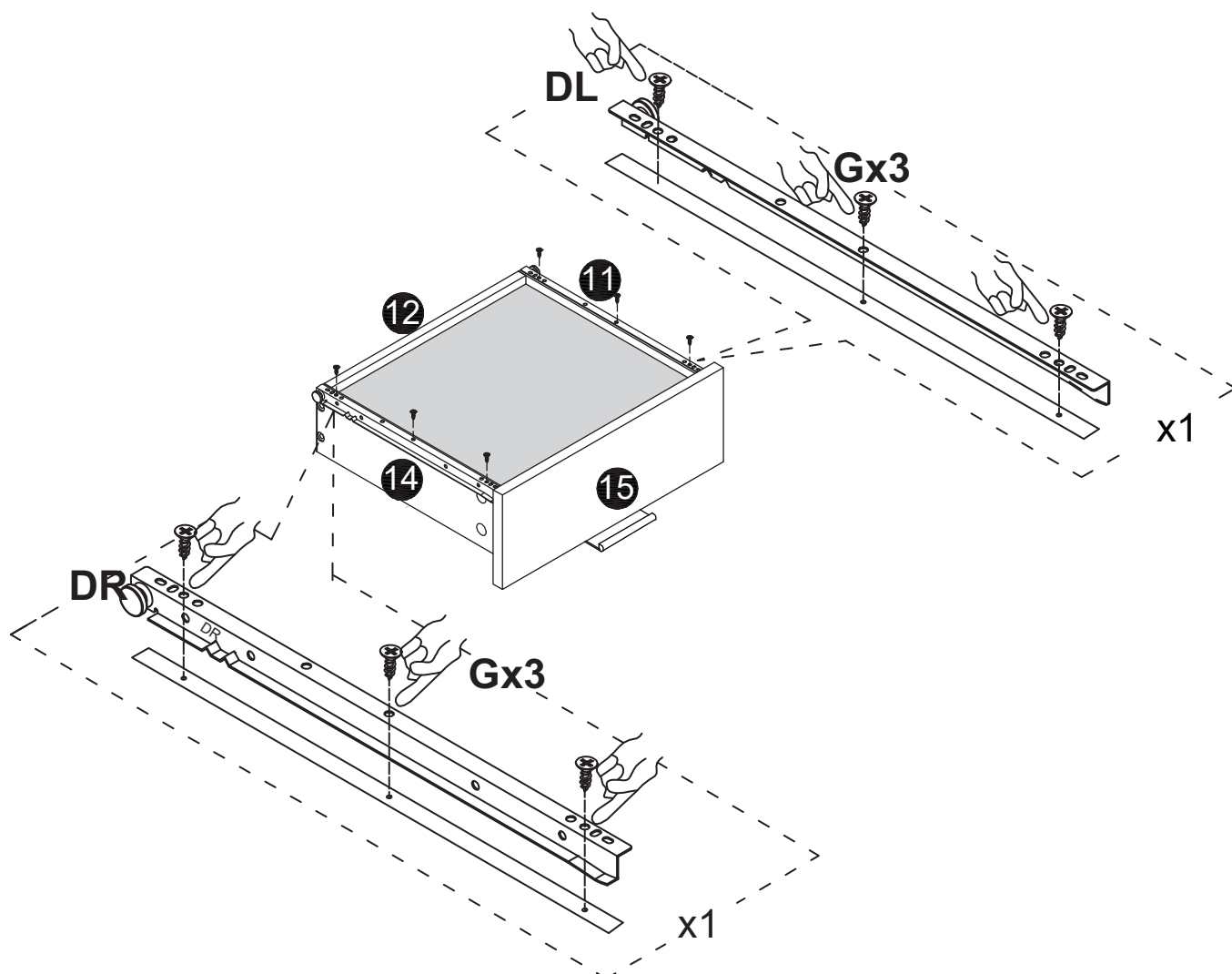
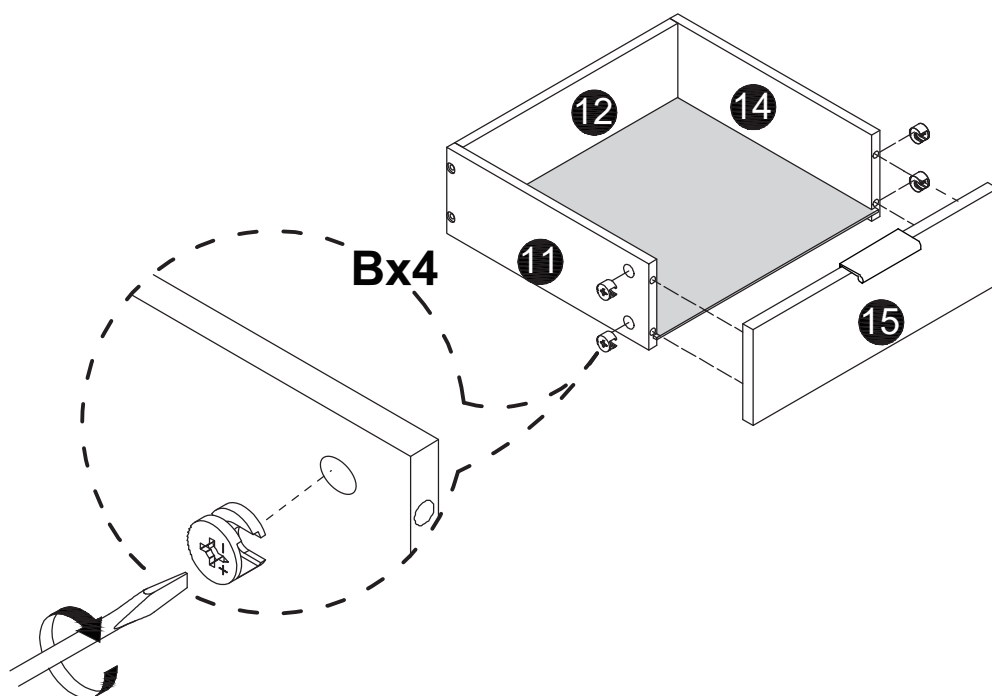


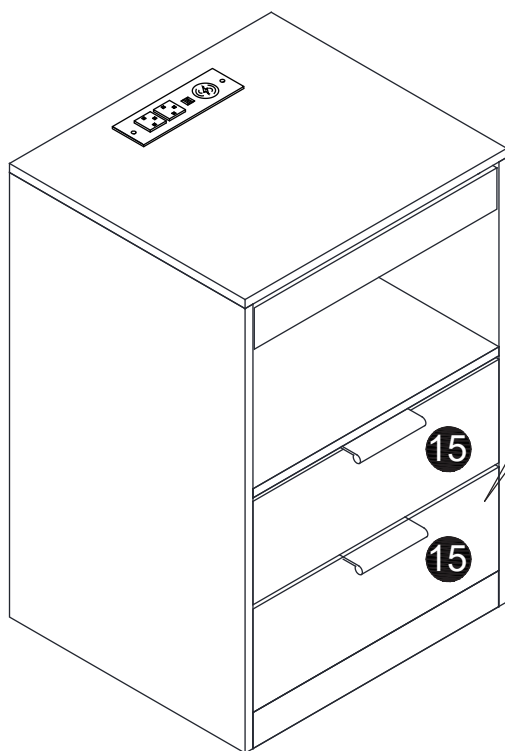
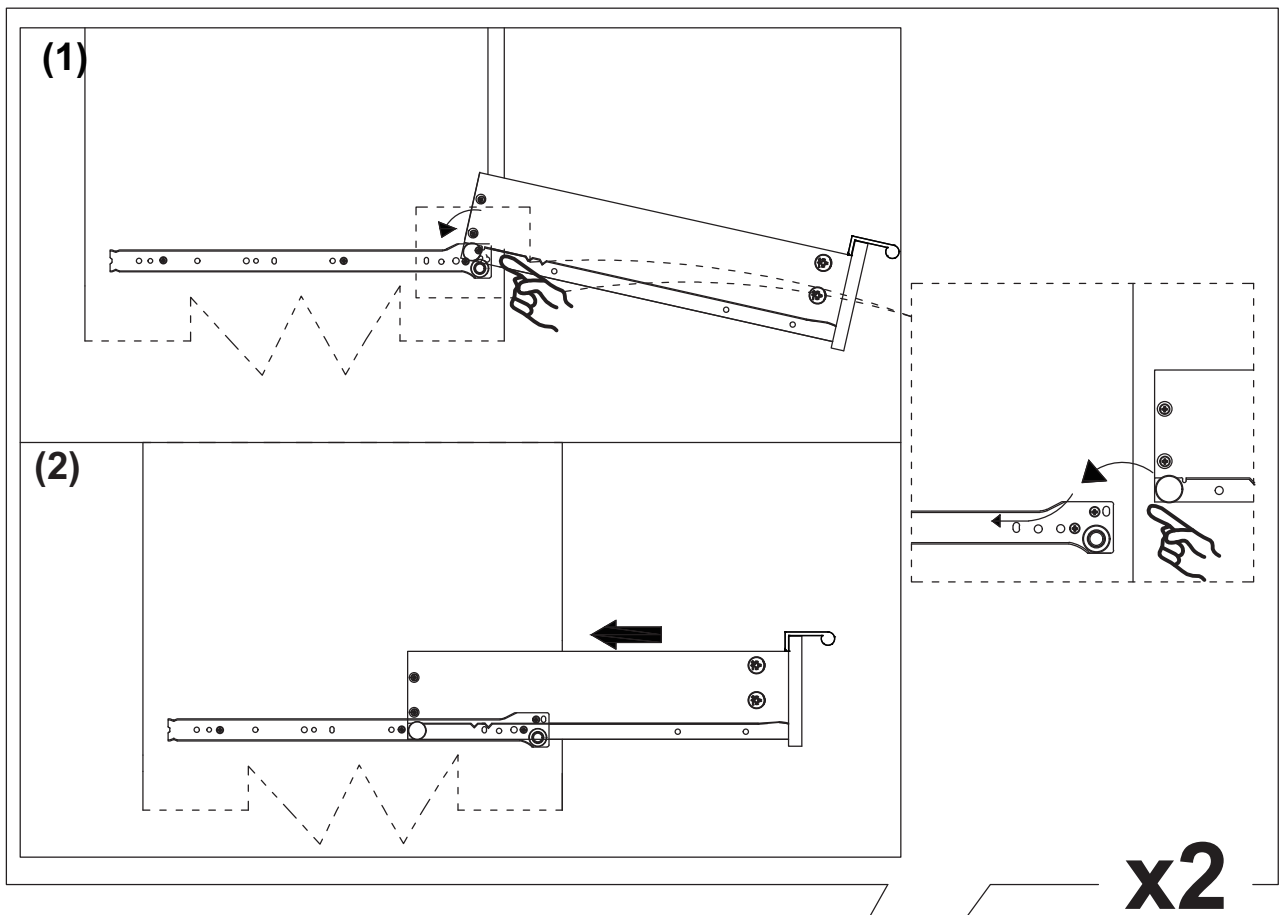
18
x2

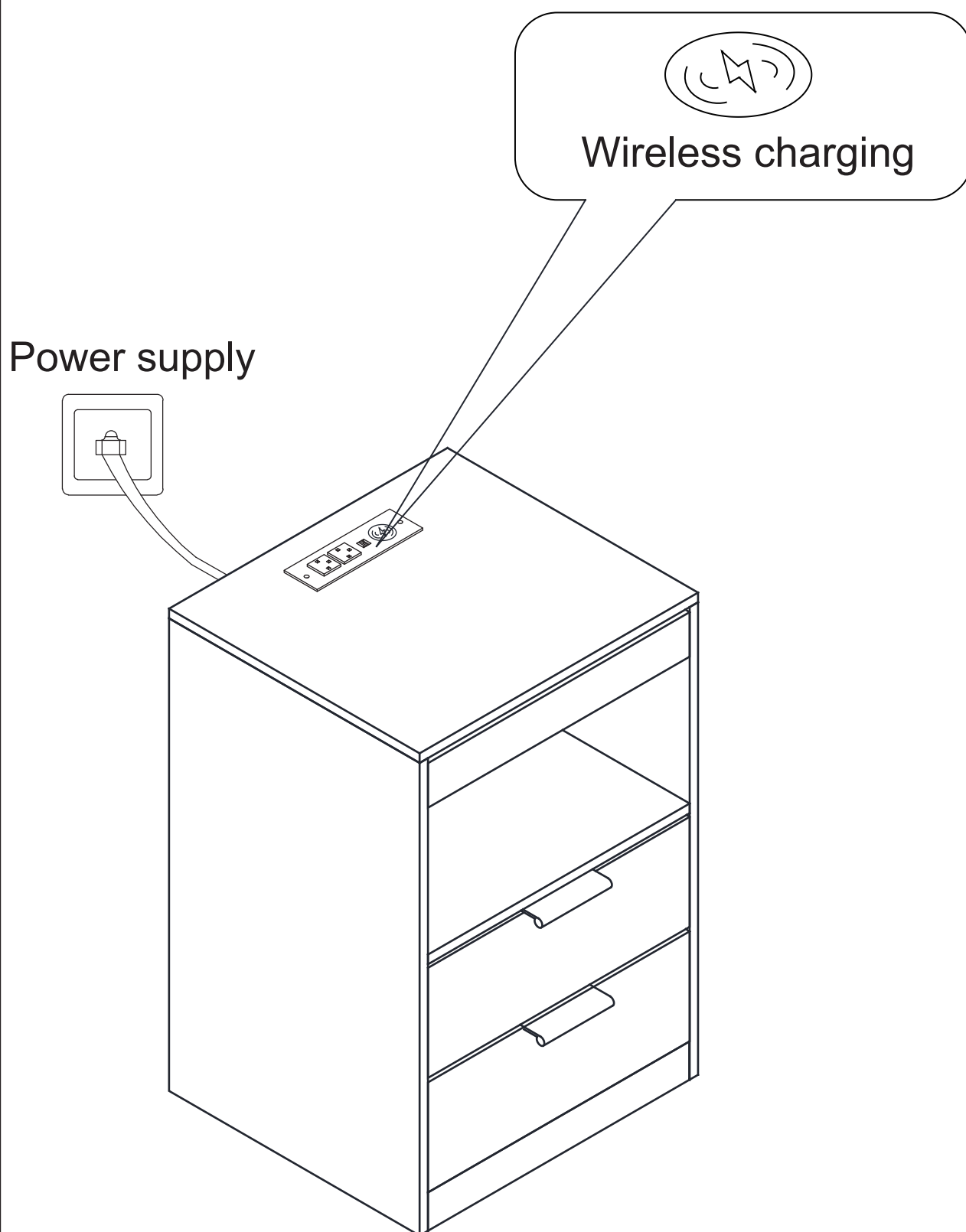


19
x2



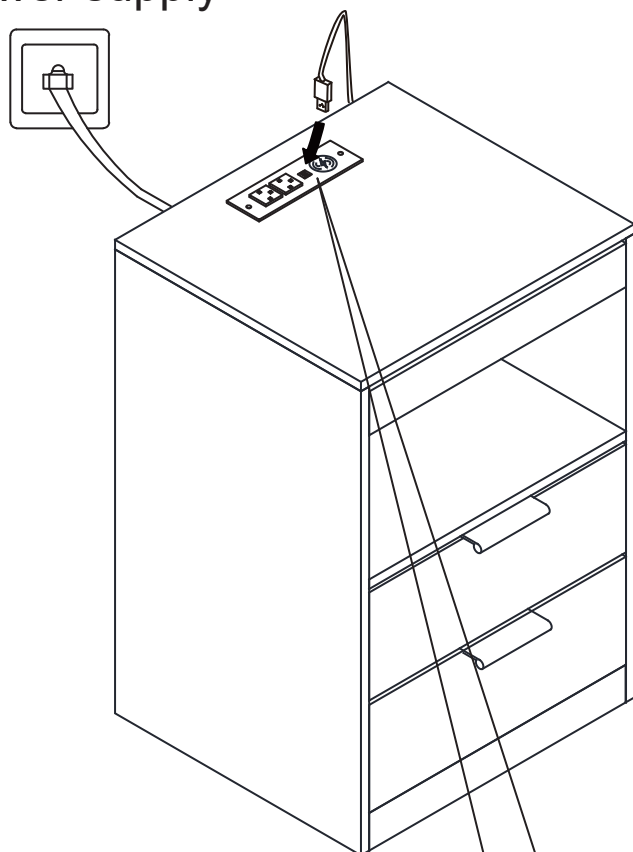






Power supply

The USB of the lamp belt can be plugged into the plug bar for power supply



Scan qr code to download APP
Bluetooth control

OR

Flip to the other side for
key control

