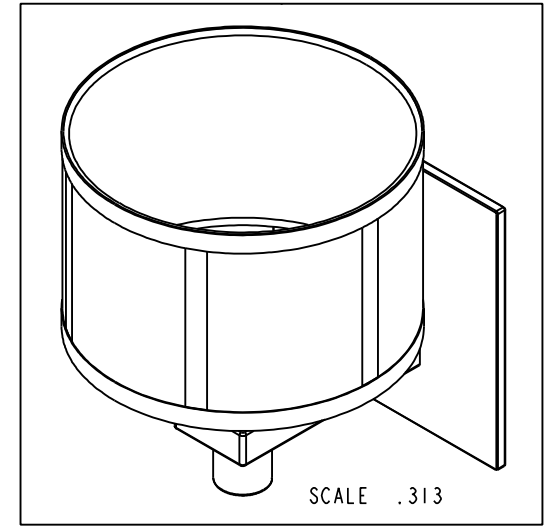
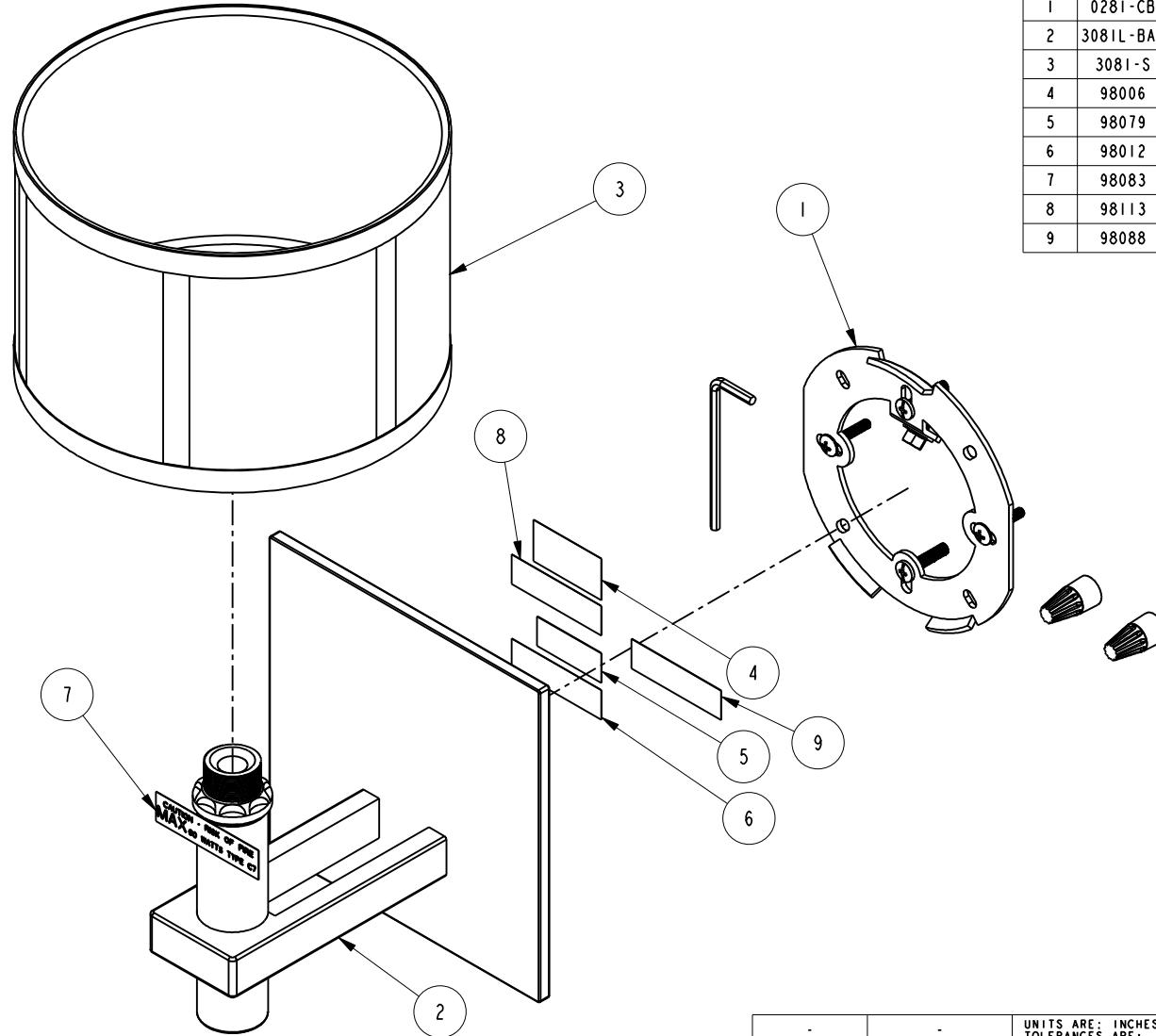


NOTES:

(N1) 1. FIT / FORM / FUNCTION SHALL FOLLOW PS-E.008.

BILL OF MATERIAL (CURRENT LEVEL)

ITEM	PT/ASSY	DESCRIPTION	TYPE	QTY.
1	0281-CB	HARDWARE PACK	ASSEMBLY	1
2	3081L-BAW	BODY ASSEMBLY	ASSEMBLY	1
3	3081-S	SHADE	PART	1
4	98006	LABEL, UL LISTED	PART	1
5	98079	LABEL, MONTH YEAR E222146	PART	1
6	98012	LABEL, WALL MOUNT ONLY	PART	1
7	98083	LABEL, 60 WATTS MAX	PART	1
8	98113	LABEL, PNXXX INCANDESCENT FOR DAMP LOCATIONS	PART	1
9	98088	LABEL, MIN 75 C SUPPLY CONDUCTORS	PART	1



TESTING	-	-	-
ASSEMBLY	-	-	-
PLATING	-	-	-
POLISHING	-	NEXT ASSY	USED ON
MACHINING	-	APPLICATION	
TOOLING FIXTURE #	REMOVE ALL BURRS AND SHARP EDGES		

UNITS ARE: INCHES [MM]
 TOLERANCES ARE:
 FRACTIONS DECIMALS ANGLES
 $\pm 1/16"$.X $\pm .1$ [2,5] $\pm 1^\circ$
 $\pm .001$.XX $\pm .06$ [1,5]

(X.XXX) DENOTES CRITICAL DIMS.
 ALL THREADS ARE CRITICAL

DRAWN VINAY 08/29/16
 CHECKED RAVINDRA 08/29/16
 APPROVED R.S. 08/29/16

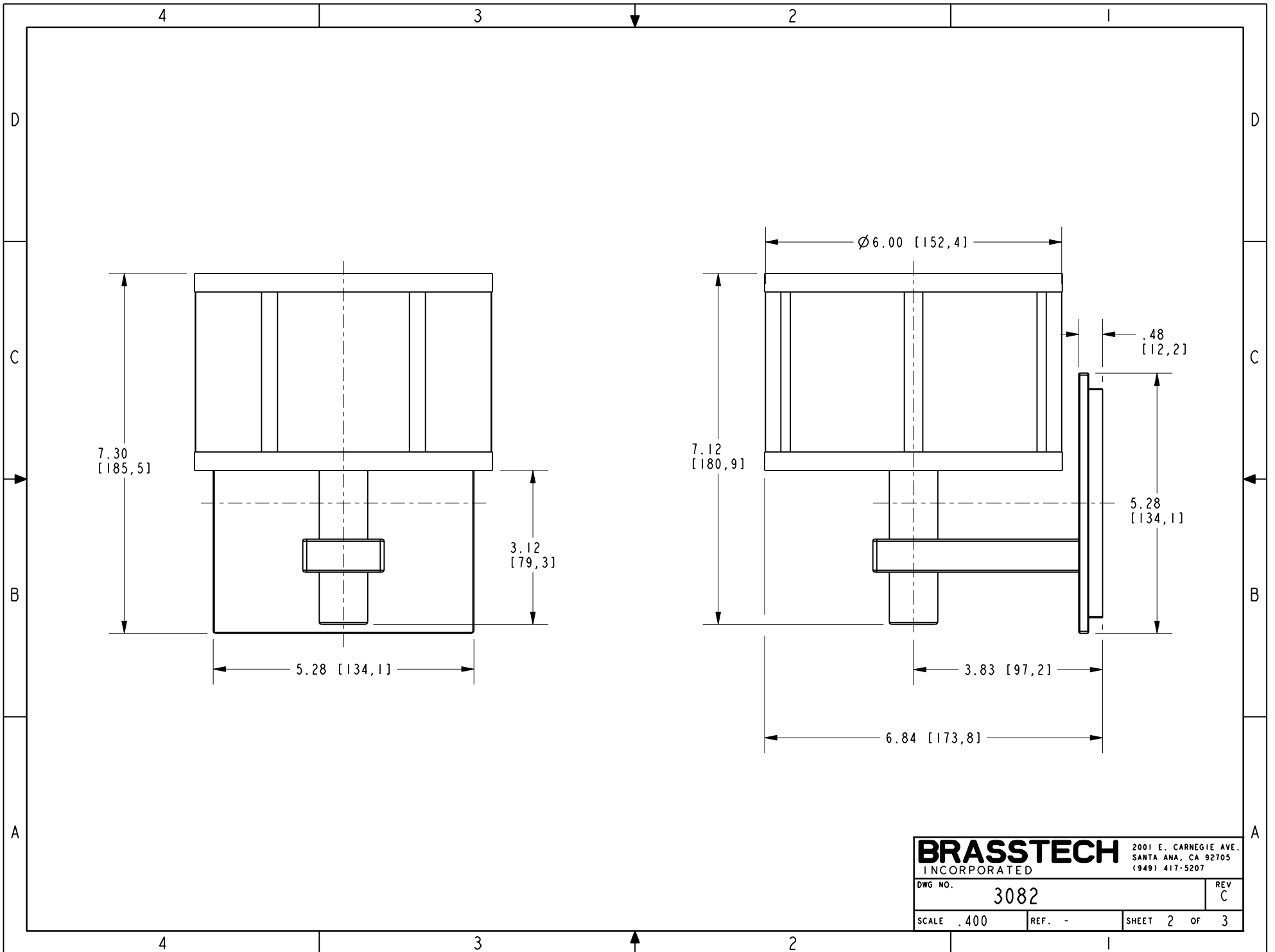
BRASSTECH 2001 CARNEGIE AVE.
 INCORPORATED SANTA ANA, CA 92705
 (949) 417-5207

FRAME LIGHT ASSEMBLY

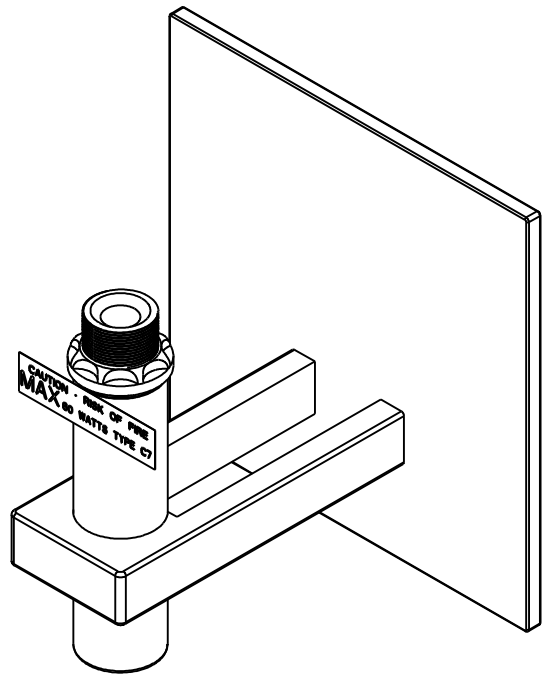
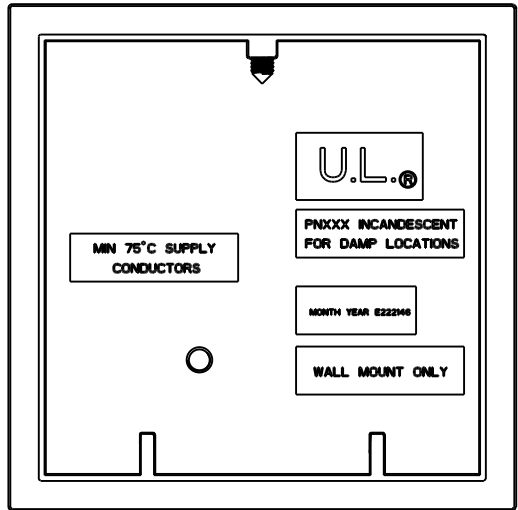
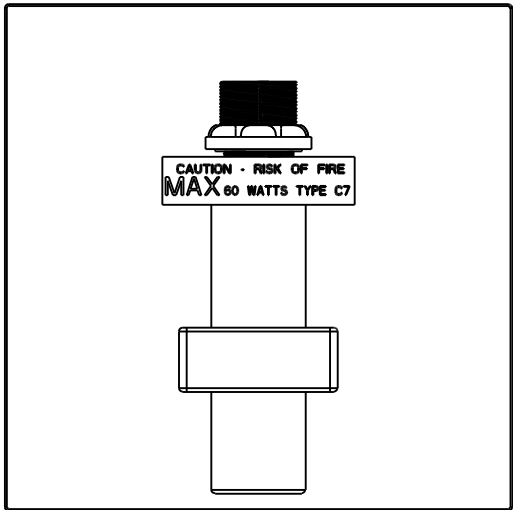
DWG NO. 3082 REV C
 SCALE .400 REF. - SHEET 1 OF 3

ZONE	REV	DESCRIPTION	DATE	APPROVED
-	C	EN-3127	08/29/16	R.S.
-	B	EN-1712	03/16/11	-
-	A	EN-1142	12/18/09	-

COPYRIGHT 2005 BRASSTECH, INC.
 THESE DRAWINGS AND THE DESIGNS
 DEPICTED HEREIN ARE THE PROPRIETARY
 PROPERTY OF BRASSTECH. ANY USE
 OR REPRODUCTION IS SUBJECT TO
 THE EXPRESS APPROVAL OF BRASSTECH.
 UNAUTHORIZED USE IS STRICTLY
 PROHIBITED. ALL RIGHTS RESERVED.



BRASSTECH		2001 E. CARNEGIE AVE.	
INCORPORATED		SANTA ANA, CA 92705	
		(949) 417-5207	
DWG NO.	3082	REV	C
SCALE	.400	REF.	-
		SHEET	2 OF 3



BRASSTECH		2001 E. CARNEGIE AVE.	
INCORPORATED		SANTA ANA, CA 92705	
		(949) 417-5207	
DWG NO.	3082	REV	C
SCALE .500	REF. -	SHEET 3 OF 3	