

CURTAIN ROD INSTALLATION GUIDE

HARDWARE INCLUDED



FOUR-PIECE ADJUSTABLE LENGTH ROD

OUTER ROD X 2

INNER ROD X 2



BRACKET X 3



WALL SCREWS X 6
ANCHORS X 6



INNER ROD SCREW X 1



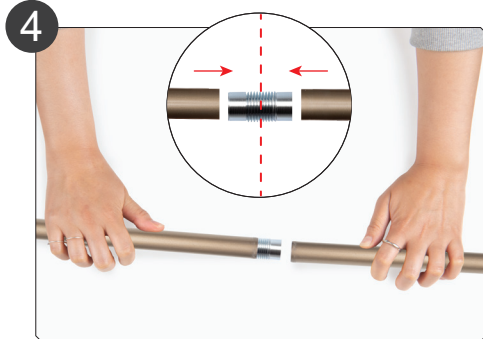
FINIAL X 2
1 PAIR



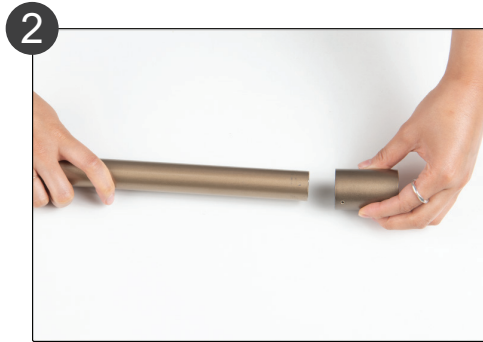
ALLEN WRENCH X 1



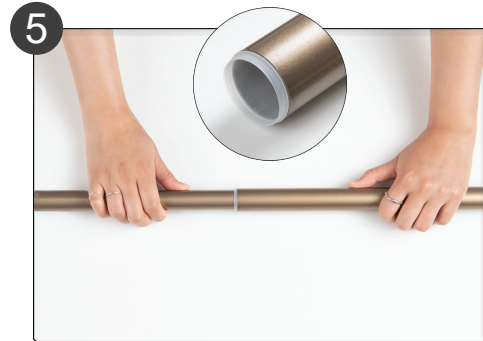
Remove the plastic securing ring from one of the finials.



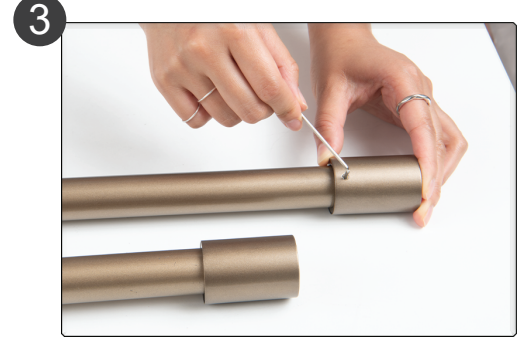
Insert one end of the Inner Rod Screw into one Inner Rod and screw it halfway in, leaving a bit of the middle section exposed. Then, insert the other end of the screw into the other Inner Rod and tighten until secure. Each end of the Inner Rod is specifically assigned to either the top finial or the middle screw. If one side doesn't fit, check the other end.



Place the finial on the edge of the outer rod. Make sure you are placing the finial on the end of the outer rod that does NOT have a plastic cap.



Place the inner rod inside one of the outer rods. Make sure to insert it from the end WITH the plastic cap.

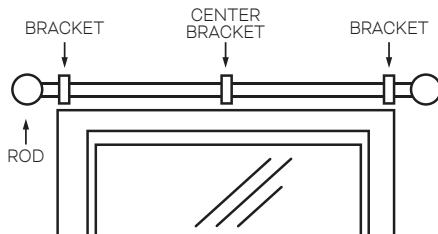


Using the provided Allen wrench, tighten the screw in the finial to secure it to the rod. Repeat for the other side.



Place the other outer rod onto the end of the inner rod inserted in step 4. Make sure to insert the plastic cap end of the outer rod. Move the inner rod to adjust the length.

Figure A



1. Make sure bracket sections are together and position in desired location above window. Install the center bracket 1/16" higher than the other brackets (Figure A).
2. Use a pencil to mark the wall where the screw locations will be drilled.
3. (Refer to Figure B and C) Align screw holes on the brackets with the pre-drilled holes on the wall.
4. Use a screwdriver to tighten the screws.
5. Slide curtain onto rod.
6. Adjust length of rod and slide rod into brackets. Ensure the seam of the combined inner rod is placed on the center bracket.
7. To adjust the projection from the wall, remove the rod, loosen screw on top side of bracket. Slide top part of bracket either in or out to desired location. Retighten screw.
8. Secure rod to bracket by hand tightening set screws in pre-drilled holes located on the back and bottom of each bracket.

Figure B
Single Rod

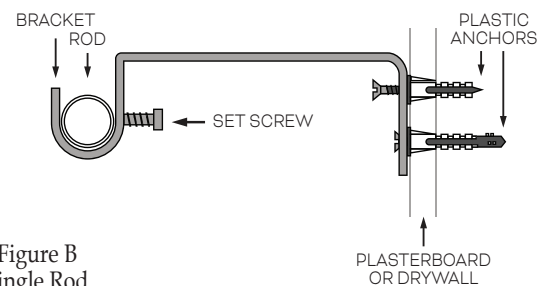


Figure C
Double Rod

