

NOTE:

To continuously improve its products, VIVOHOME reserves the right to modify this information without prior notification. Please contact customer service via support@vivo-home.com with any questions, comments, or concerns. Thank you for using VIVOHOME products in your home!



AMAZON
VIVOHOME



INSTAGRAM
@VIVOHOME.OFFICIAL

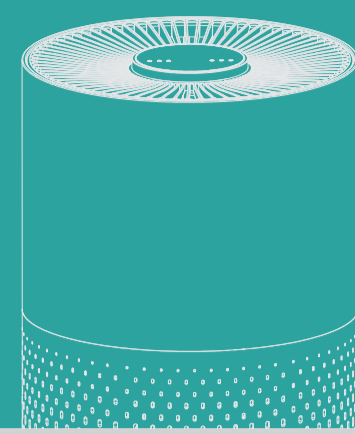


FACEBOOK
@VIVOHOME.OFFICIAL

Thank You For Purchasing From
VIVOHOME
support@vivo-home.com

VIVOHOME®

INSTRUCTION MANUAL



AIR PURIFIER

Thank you very much for using our product. Please read the user manual carefully before use, and keep it for future reference.

BEFORE USING, PLEASE REMOVE THE PACKAGING OF INNER FILTER.

CONTENTS

Advisories	01
Product Overview	02
Specifications	04
Installation of Filter	04
Operation Instructions	06
Maintenance	08
FAQ	09

ADVISORIES

Before using, please read this user manual carefully and keep it for future reference.

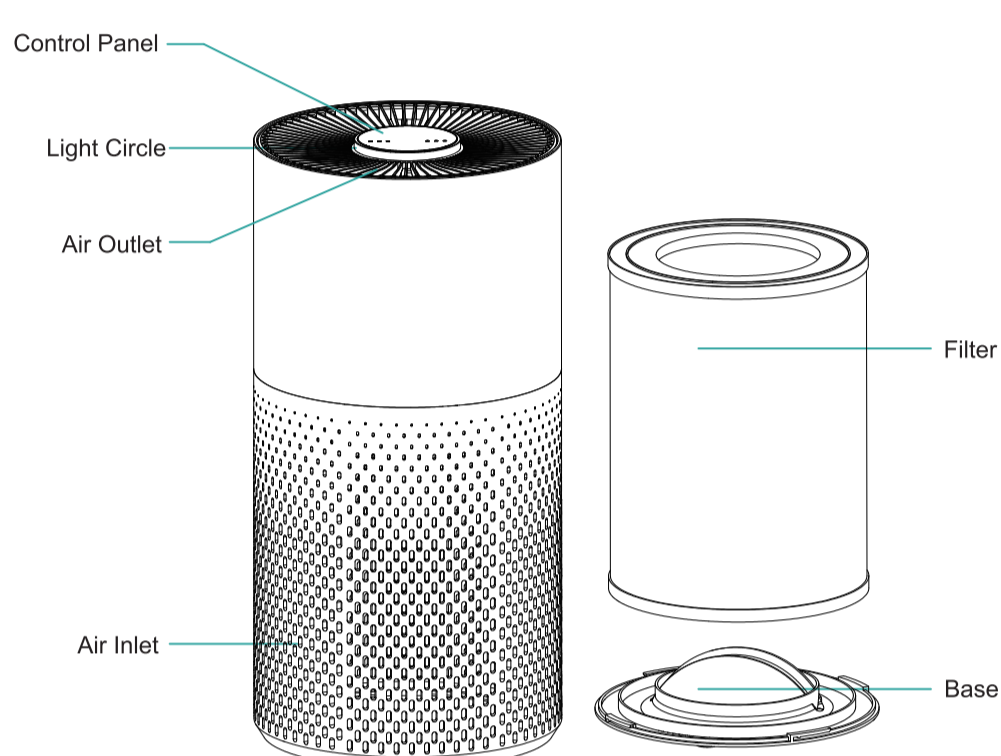
Warning

- To avoid electric shock and fire, do not allow water, liquid or any flammable detergent to get into or to clean the product.
- Do not spray insecticides perfumes sprays around the product.
- Before connecting the power supply, please check whether the voltage of the product is consistent with the local power supply voltage.
- This product can not replace normal ventilation; daily dust collection or oil pumping while cooking.
- Ensure the product is upright and on a stable surface.
- Leave at least 30cm of space of the back and sides of the product, and at least 50cm of space above the product when using.
- Ensure both the filter and its' cover are properly installed before using.
- Do not insert finger or other objects into the air outlet/inlet to prevent damage or any malfunction.

01

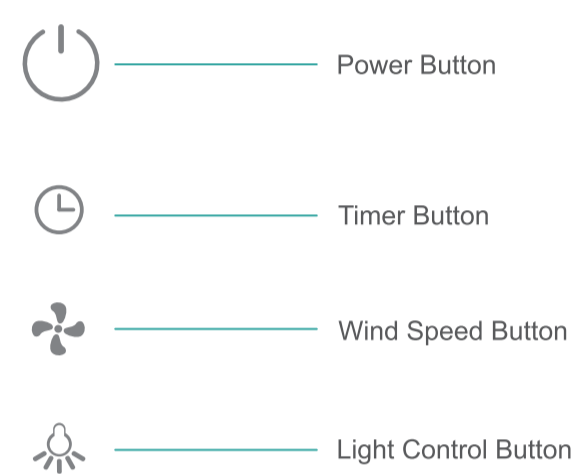
PRODUCT OVERVIEW

Components



02

Control Panel



03

SPECIFICATIONS

Size	195*195*388mm
Net weight	2KG
Adapter	Input : 100-240V 50Hz/60Hz; Output : 24V 1.2A
Power	23W
CADR	130m ³ /h
Coverage area	≤16m ²

INSTALLATION OF FILTER

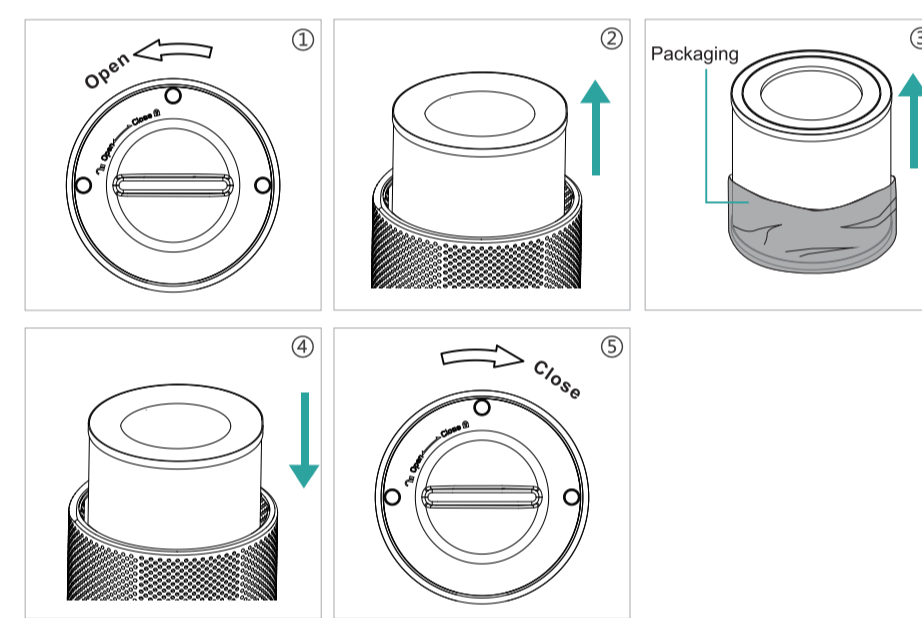
Notice:

- Please remove the packaging before using for the first time.
- Ensure the machine is unplugged before removing or installing the filter.
- If the light circle flashes red, the filter should be replaced.
- Please wipe the dust from the filter regularly, do not wash or use it repeatedly.
- Please use approved filters designed for this product.

How to Install Filter:

Unplug the power socket of the machine before replacing or installing the filter.

04



- Invert the machine, and rotate the base along the direction marked "OPEN".
- Take out the filter from the machine.
- Remove the packaging of the filter.
- Install the filter into the machine.
- Then replace the base by rotating and tightening the base along the direction marked "CLOSE".

05

OPERATION INSTRUCTIONS

When connected to the power socket, the buzzer will ring for 1 second.

Power Button

- Touch the power button to turn on the machine, and the buzzer will ring once and the MID wind speed indicator light will turn on.
- Touch the button again, the buzzer will ring once and the machine will turn off as will all the lights.

Wind Speed Button

- Whole press the wind speed button, the buzzer will ring once.
- Press the wind speed button again to rotate through SLEEP & MID & HIGH Mode. The buzzer will indicate the change, and the indicator light will turn on.

Notice: Each time you press the wind speed button, the night light will turn on for about 3 seconds. In SLEEP mode, if you do not press any button for 5 seconds all lights will turn off and the product will run in SLEEP mode, press any button to wake up the light.

06

Timer Button

- While working, press the timer button to set the time cycle of 2H, 4H and 8H timer with buzzer rings, and the corresponding indicator will be on.
- Press again, the timer indicator will turn off and the machine will work continuously without timer.
- While in the timer cycle, the machine begins to count down. When the time is up, the fan will stop and all lights will turn off.

Notice: Each time you press the timer button, the night light will turn on for about 3 seconds.

Night Light Button

- Press the light button while in standby status, the buzzer will ring once and the light ring will cycle between blue-cyan-green-yellow-orange-red-purple. Then press the button gain to hold current color.
- Press the light button again and the LED light will turn off.

07

MAINTENANCE

Note

- Ensure the machine is unplugged before maintenance.
- Do not immerse the air purifier into water or any liquid.
- Do not use abrasive, corrosive or flammable cleansers (such as bleach or alcohol) to clean any part of the unit.
- Do not wash the filter.
- Do not use a vacuum cleaner to clean the filter.
- Please sterilize the filter under sunlight regularly.

Cleaning & Storage

- Ensure the machine is power-off and unplugged.
- Use a soft cloth with neutral cleanser to clean away any dust or debris from the surface of the machine and air inlet/outlet.
- After the machine completely dries, put on the bag and place it in a cool and well-ventilated place.
- If you do not use it for a long time, please turn on the machine for a few minutes from time to time to ensure good performance.

Notice: Please don't allow the machine to get wet while cleaning.

08

FAQ

SITUATION	REASON
Not working	<ul style="list-style-type: none"> Is it plugged into a power socket? Is there a power outage? Is the home leakage switch or fuse cut off? Is the filter replacing indicator flashing?
Poor performance	<ul style="list-style-type: none"> Is there any dust in the surface of pre-filter? Is there any obstacle blocking in the air inlet/outlet?
Significant noise	<ul style="list-style-type: none"> Is there anything stuck on the fan in the air outlet? Is the machine tilted? Please set a lower grade of wind speed of the noise is too loud, or set low grade of wind speed when using in bedroom at night.
Emitting a bad smell	<ul style="list-style-type: none"> It is normal for the machine to emit a plastic smell when using it for the first time. If the filter is dusty or dirty, the machine may emit a bad smell. If there is a burning smell, please unplug the device and contact customer service.
Replace filter reminder flashes when it has already been replaced	<ul style="list-style-type: none"> Please press the power button (⏻) for 7s to reset the machine and the life counter of the filter will start.

Notice: If the above FAQ can not solve your problems and need maintenance, please contact the supplier or after sales service center. Please do not disassemble the machine to maintain by yourself.

09