

MST-907GHC Infrared Sauna Installation & Owner's Manual

Please read this entire manual thoroughly before proceeding with the assembly.

CONCENTRATE ON PROFESSIONAL SAUNA



PRECAUTIONS AND INSTRUCTION

ATTENTION

Please read all instructions thoroughly before using.

Serious injury may result if ignore the following warning and instruction.

Basic precautions should always be followed when using this electrical equipment.

DANGER

To avoid the risk of causing burns, fire, electric shock, or other injuries:

- Connect the power cord to a properly grounded outlet.
- Using only for its intended use as described in this manual.
- Don't use accessories not recommended by the manufacturer.
- Please disconnect the power after using.
- Please keep the electrical cord away from heated surfaces.
- If the sauna is faulty, the supply cord or plug is damaged, please stop using it immediately.

WARNINGS

- Don't stay longer than **one hour**.
- Don't put the sauna on a **humid** environment.
- Don't touch the heater directly with hands or body for a long time.
- Don't use any sharp tools on or near the heaters (severe damage may result).
- Placing the sauna on a **flat** surface.
- Unauthorized disassembly of the sauna is **prohibited**.
- People with health problems should consult a physician for prior to using the sauna. (Including acute diseases, malignant tumors, high blood pressure, heart disease, allergic dermatitis, pregnancy, etc.)
- This product is not intended for use by person (including children) with reduced physical, sensory or mental capabilities, or lack of adequate experience

SPECIFICATIONS

Product Name	Far Infrared Sauna
Model	MST-907GHC
Dimensions	47.3*47.3*73.2 in
Voltage	110-120VAC
Plug Type	15 Amps
Wattage	1670W
Number of Heaters	7 pcs
Raw Material	Hemlock
Location	Indoor

Step 1: Position the Floor Panel

Place the floor panel on a flat surface. Before assembly, make sure the floor is flat so that you can maintain a comfortable subsequent installation. (image1)



image 1

Step 2: Position the Rear Panel

There are two rear panel. You should lift the bigger rear panel into position wedging the bottom of the panel into the channel in the floor panel, you can gently rest the rear panel against the wall of your home. (image 2)



image 2

Step 3: Position another Rear Panel

Then place the small panel into the slot of the floor panel and push it towards the bigger rear panel. Check whether the hooks of the fasteners are up or down, and the fasteners are connected together as shown. (image 3)



image 3



CONTROL PANEL INSTRUCTION

Pre-set Time
Up to 60Mins

°C/°F switching

Pre-set Temps
Up to 140°F



Reading Lamps
On/Off

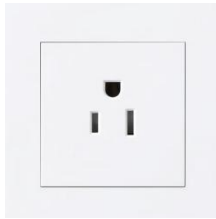
Power On/Off

Foot Heating Panel
On/Off

WARNING: Pay attention to the risk of electric shock. Don't connect the power supply until all wires are properly connected.



Congratulations! Installation completed!
Plug in and power on to enjoy your sauna!



knowledge, unless they have been given supervision or instruction concerning use of the appliance by a person responsible for their safety.

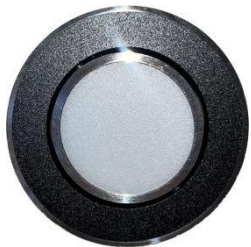
- To be on the safe side, children should not use the sauna.
- Using a sauna after taking alcohol, drugs, or medication can **lead to hyperthermia** and increase the risk of death.
- If you are feeling uncomfortable, exit the sauna immediately and consult a doctor.
- Children should be supervised to ensure that they do not play with the appliance.

HYPERTHERMIA

Prolonged exposure in the sauna may cause hyperthermia. Hyperthermia occurs when body's core temperature rises above 98.6F. Symptoms of hyperthermia include a rise in body temperature, dizziness, lethargy, drowsiness, and fainting. The effects of hyperthermia may include:

- a) Failure to perceive heat / Unawareness of impending heat
- b) Failure to recognize the need to exit the sauna
- c) Fetal damage in pregnant women
- d) Physical inability to exit the sauna
- e) Unconsciousness

Other Functions



Reading lamp



Bluetooth



Vent

Installation Guide

Each panel is heavy, especially the top panel. Be careful to avoid injury when installing. This sauna requires at least 2 adults to complete assembly. The panels should be install in the following order:

Floor Panel → Rear Panel → Another Rear Panel → Right Panel → Bench Support Panel → Left Panel → Bench Surface Panel → Front Panel → Ceiling Panel

Step 6: Place the Left Panel

Place the Left Panels into the slot of the floor panel and push it towards the rear panel. Please check if there is almost no visible gap, then it is already fixed (image 9).



image 9

Step 7: Place the Bench Surface Panel

Please make sure to always install the Bench Surface Panel before installing the Front Panel, otherwise it will not fit inside due to space limitations. (image 10)



image 10

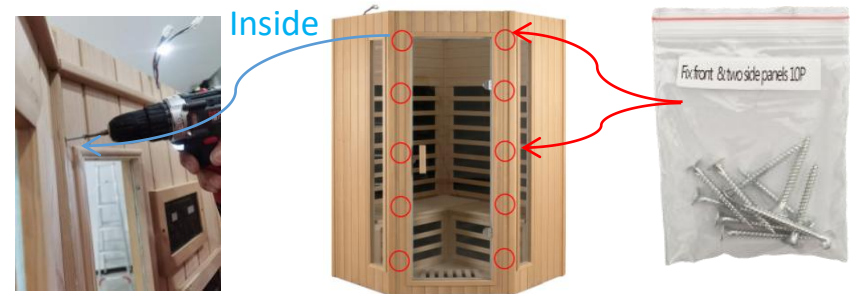
Step 8: Place the Front Panel



Place the front panel into the slots in the floor panel and push it towards the side panels. Then one person holds the front wall and one person enters the sauna to see if the gap is barely visible.

Step 9: Screw Fixation

After completing the assembly of the sauna's front wall, you will need one person to hold the front wall while the other person secures the front wall to the side wall with matching screws to make the front wall more secure.



Step 10: Install the Ceiling Panel and Connect the wires

Place the ceiling on top of the sauna. Make sure that all panels are in the slots in the ceiling panel. Make sure that all wires on the side panel pass through the holes. Finally, connect all the wires in the ceiling panel.



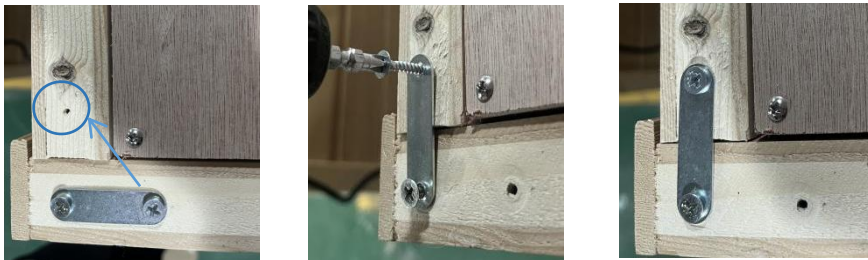
Step 11: Screw Fixation

When the sauna is assembled, you need to fasten each side wall to the back wall with matching screws, and then fix the two back walls together to make the whole sauna stronger.

● Underneath the side and rear walls



● At the TOP of the Front & Rear wall



7



Step 4: Position the Right Side Panel

Place the right side panel in place so that the wooden strip at the bottom of the right side panel is clamped to the floor panel. (image 4)

Step 5: Place the Bench Support Panel and Connect the wire behind

Place the two Bench Support panel (image5) (image6) and connect the wires behind. Each two wires have corresponding unique interface shape (image7), hear a click to indicate that the connection is completed (image8).



image 5



image 6

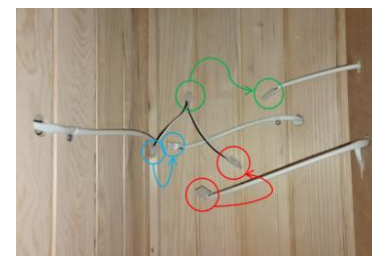


image 7



image 8

4