

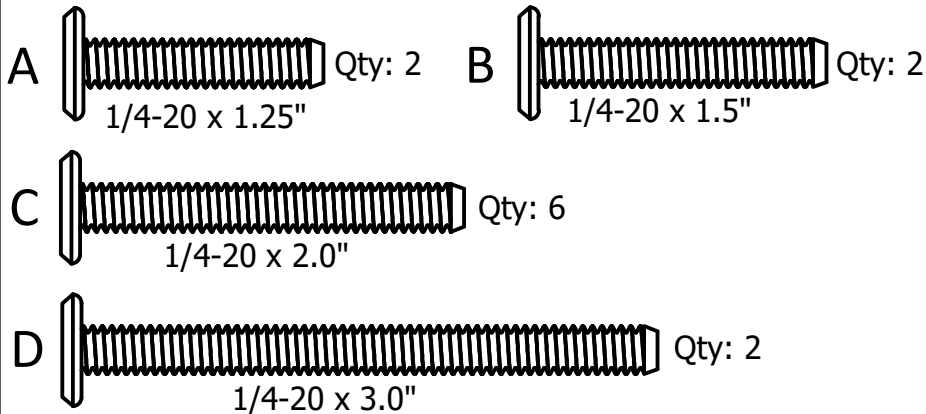
# 4' Adirondack Bench

## Assembly Guide

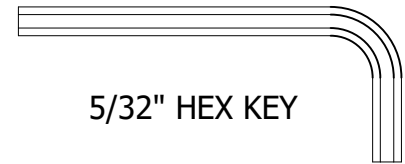


\*Actual Style May Vary from the One Pictured in this Guide

### HARDWARE INCLUDED



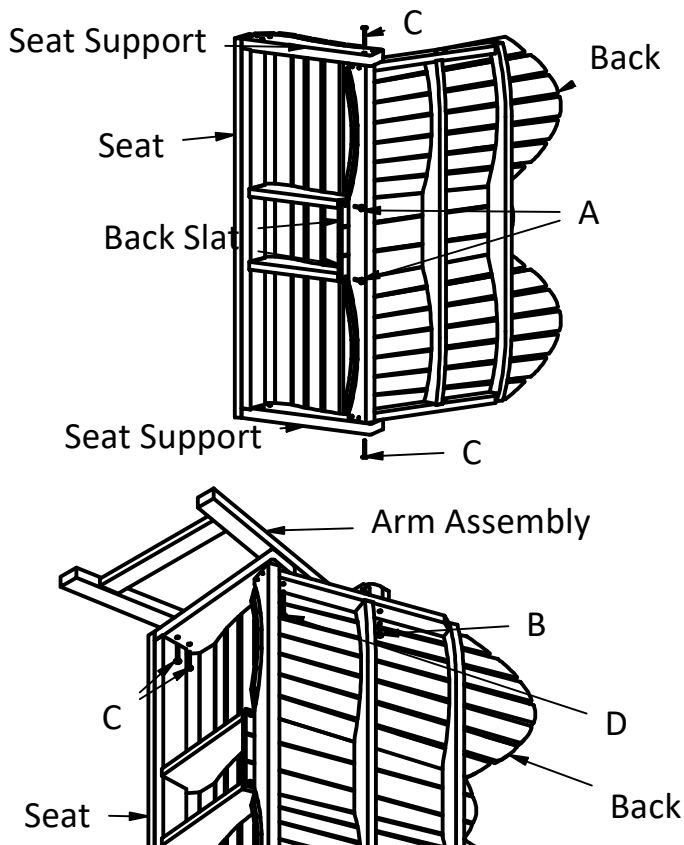
### TOOLS INCLUDED



5/32" HEX KEY

### IMPORTANT!

DO NOT fully tighten bolts until all bolts are started.



**1)** Attach Back to Seat using (2) C Bolts going through Seat Supports into the Back.

**2)** Attach Back to Seat using (2) A Bolts going through Back Slat into the Seat.

**3)** Attach the Arm Assembly to the Seat using (2) C bolts.

**4)** Attach the Arm to the Back using (1) B bolt and (1) D bolt.

**5)** Repeat **3** and **4** to attach the other Arm Assembly on the other side.