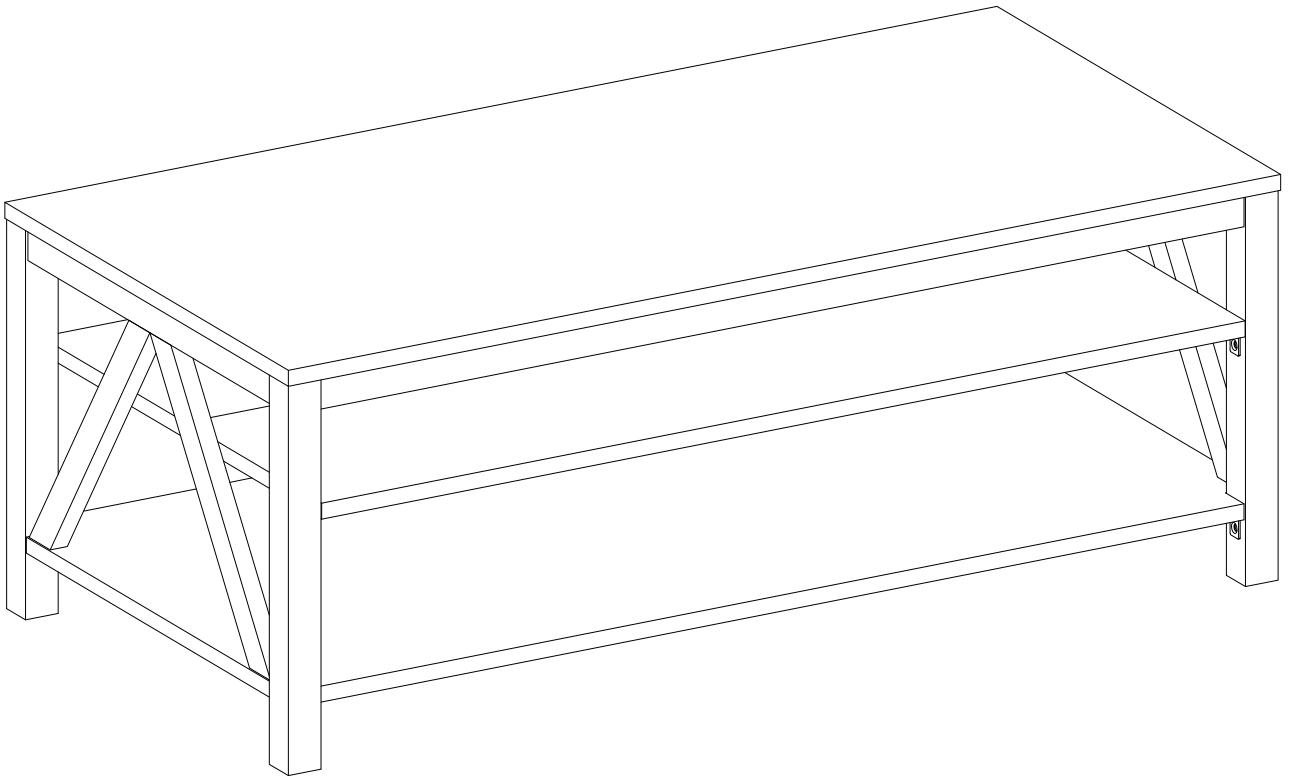
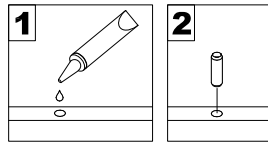


Assembly Instructions

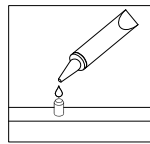


General Assembly Guidelines

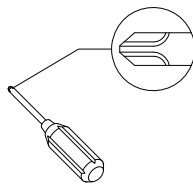
- I. Ensure that all parts and hardware are available before beginning assembly.
- II. Follow each step carefully to ensure the proper assembly of this product.
- III. Two people are recommended for ease in the assembly of this product.
- IV. The three main types of hardware used to assemble this product are: wood dowels, screws and bolts.
- V. The provided glue is to secure wood dowels in place. When first inserting dowels, locate the appropriate hole for the dowel, place a small amount of glue in the hole and insert the dowel. Wipe away excess glue immediately.



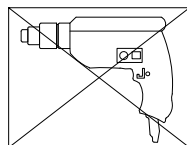
In future assembly steps when dowels are necessary to attach assembly parts together, place a small amount of glue on the end of the dowel before attaching parts together. Wipe away excess glue immediately.



- VI. A Phillips head screwdriver is required for the assembly of this product .

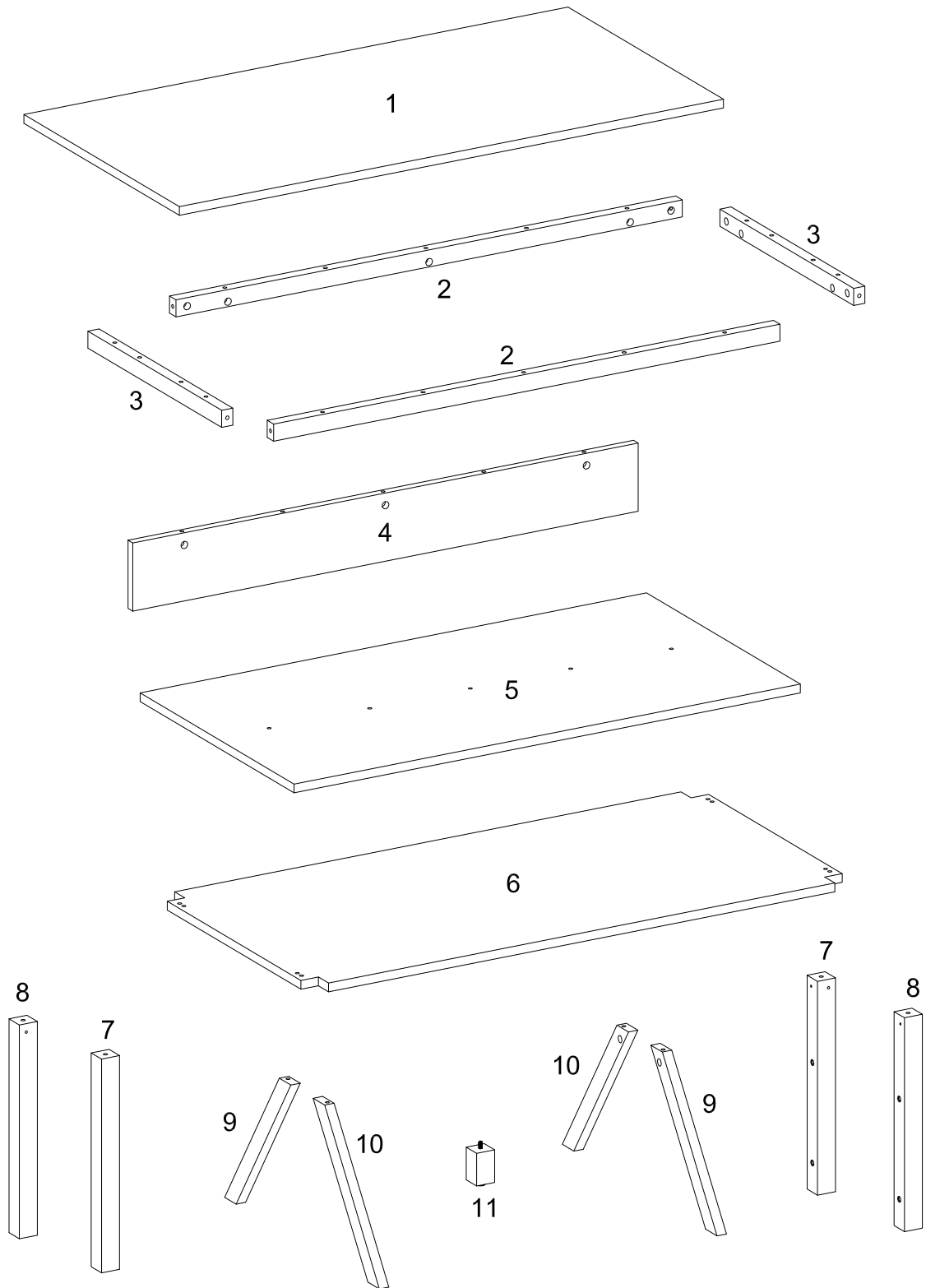


- VII. Power tools should not be used to assemble this product.



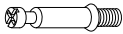
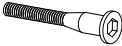



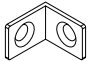
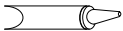


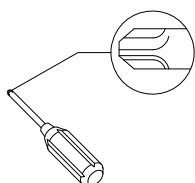
- VIII. Drill may be needed for securing product to wall.

Parts List



Hardware List

A		Ø8x30mm	Wooden dowel	20 pcs
B		Ø15x11mm	Cam lock	25 pcs
C		Ø6x35mm	Cam bolt	25 pcs
D		Ø6x50mm	Screw	7 pcs
E		M 4	Hex Key	1 pc
F		M6x15mm	Bolt	16 pcs
G		Ø30mm	Sticker	25 pcs
H			Connecting iron sheet	8 pcs
J			Glue tube	1 pc

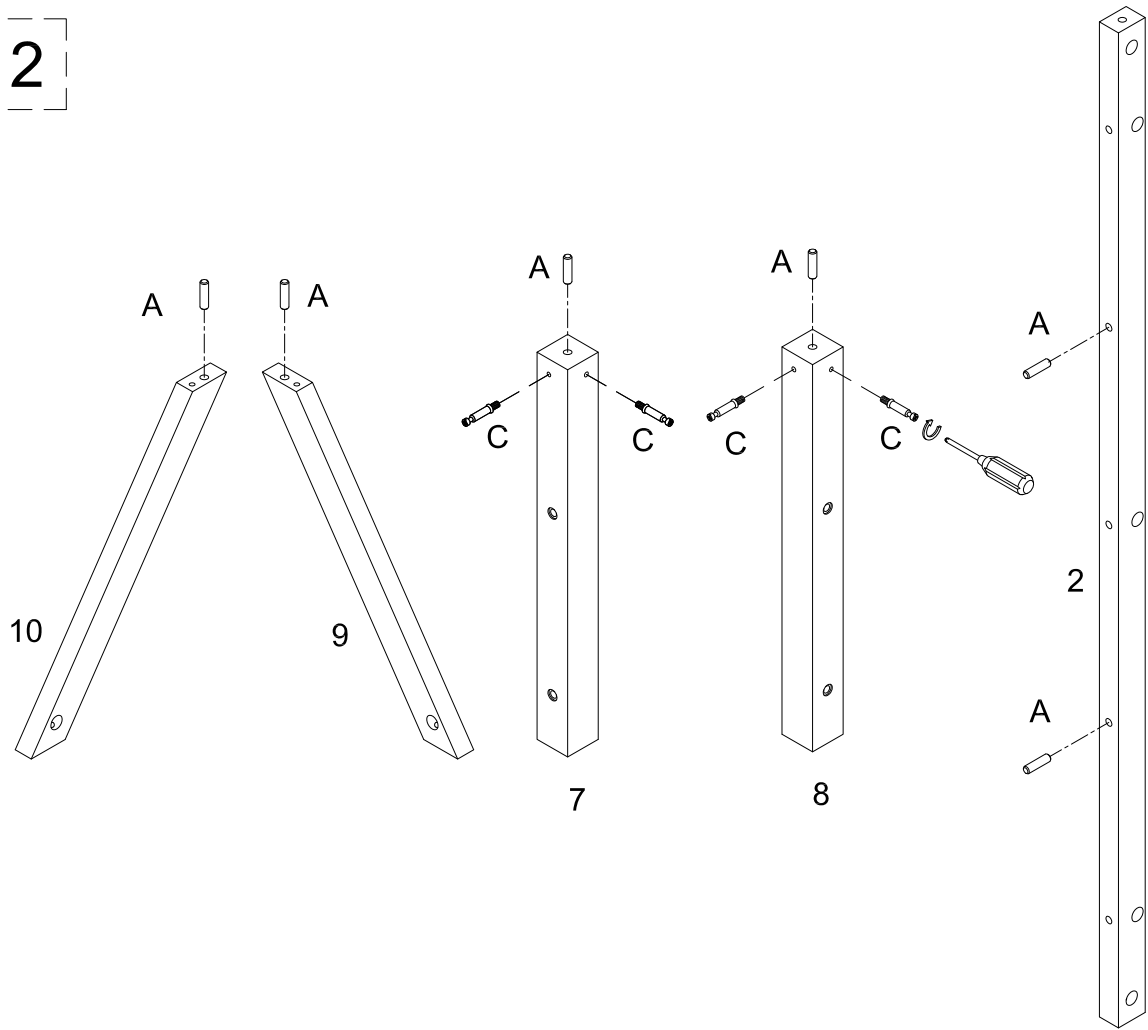


Philips head screwdriver required for assembly
(not included)

*The hardware quantities listed above are required for proper assembly.
Some extra hardware may also have been included.*

Step 1

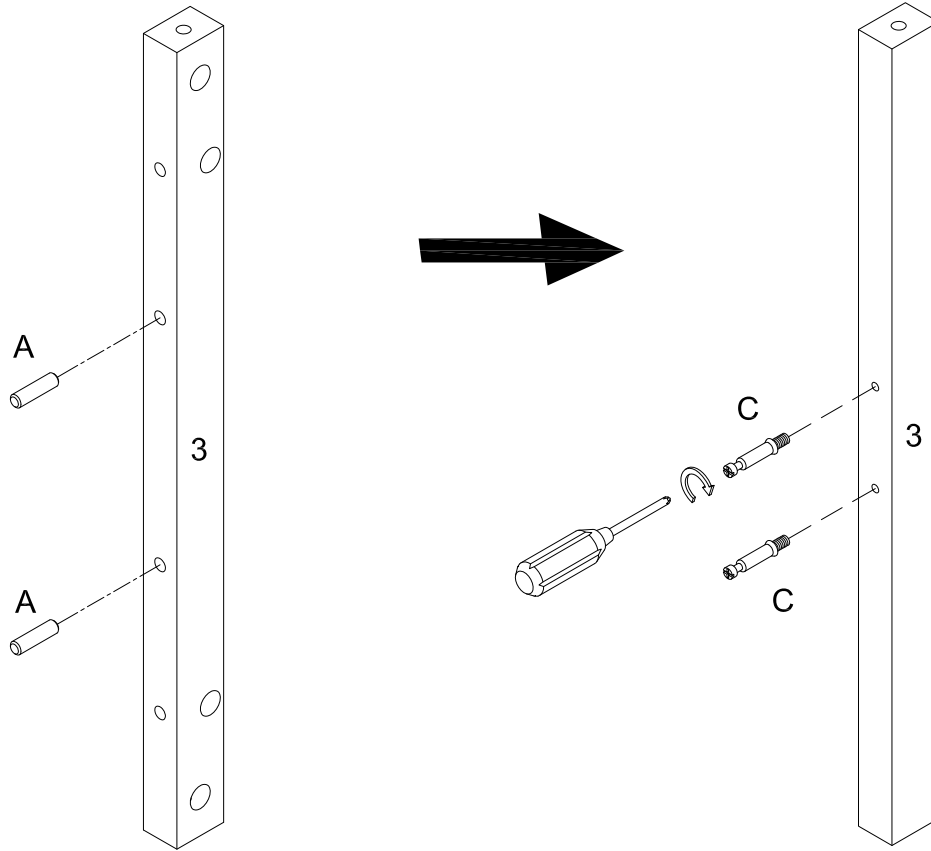
x 2



Insert wooden dowel (A) into parts (2,7,8,9,10), then secure cam bolt (C) into parts (7,8) with Philips head screwdriver as per diagram.

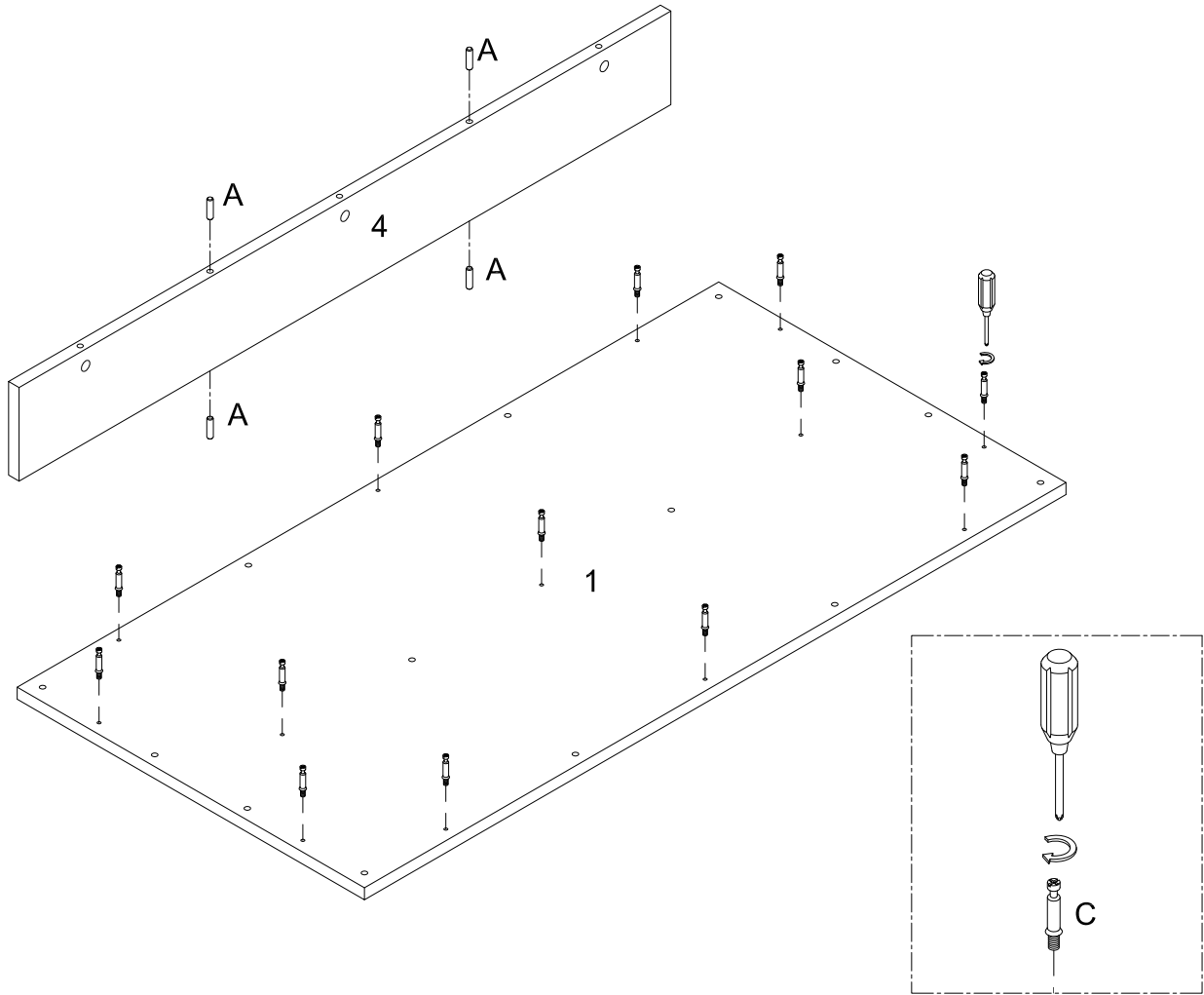
Step 2

x 2



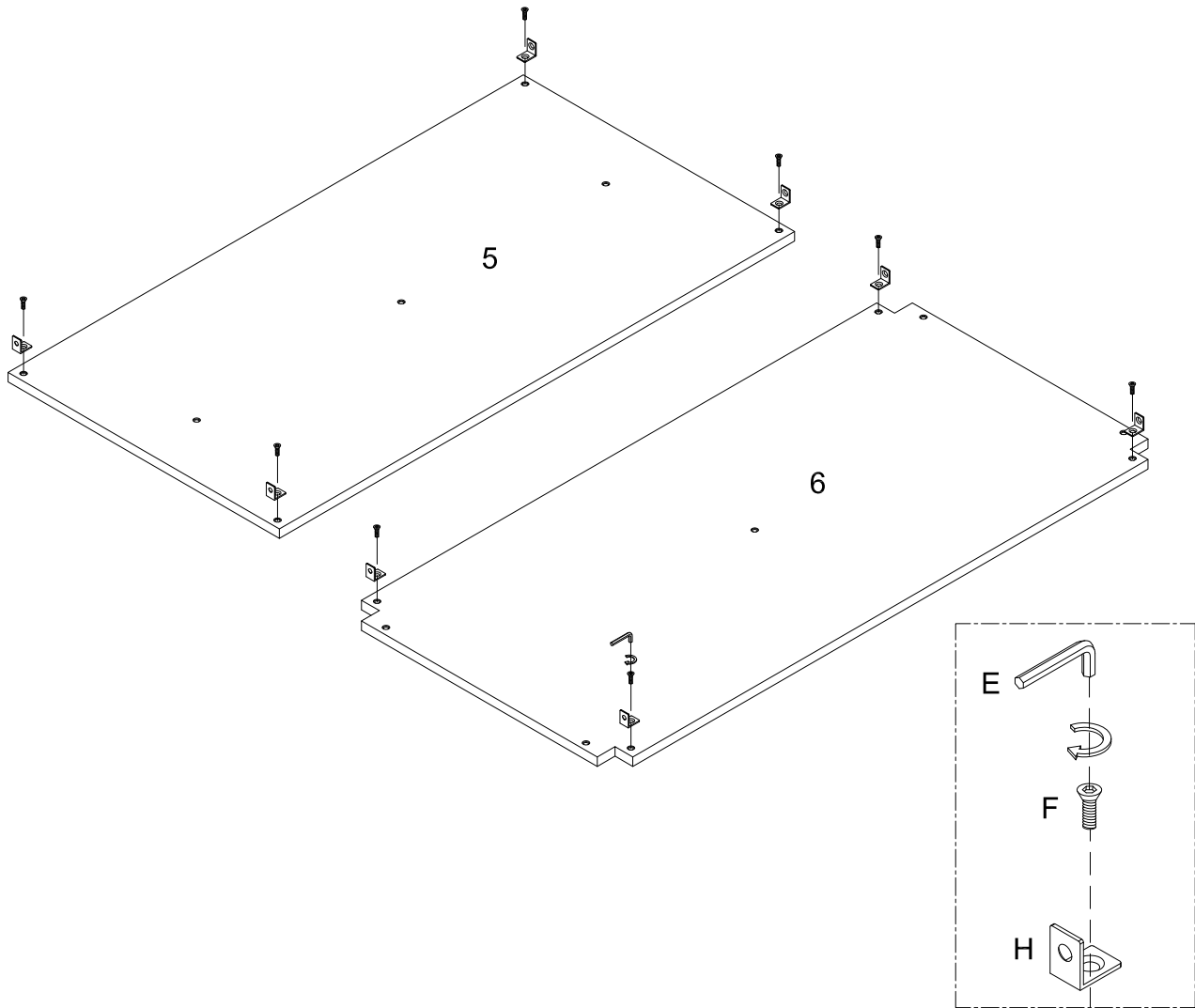
Insert wooden dowel (A) into part (3), then secure cam bolt (C) into part (3) with Philips head screwdriver as per diagram.

Step 3



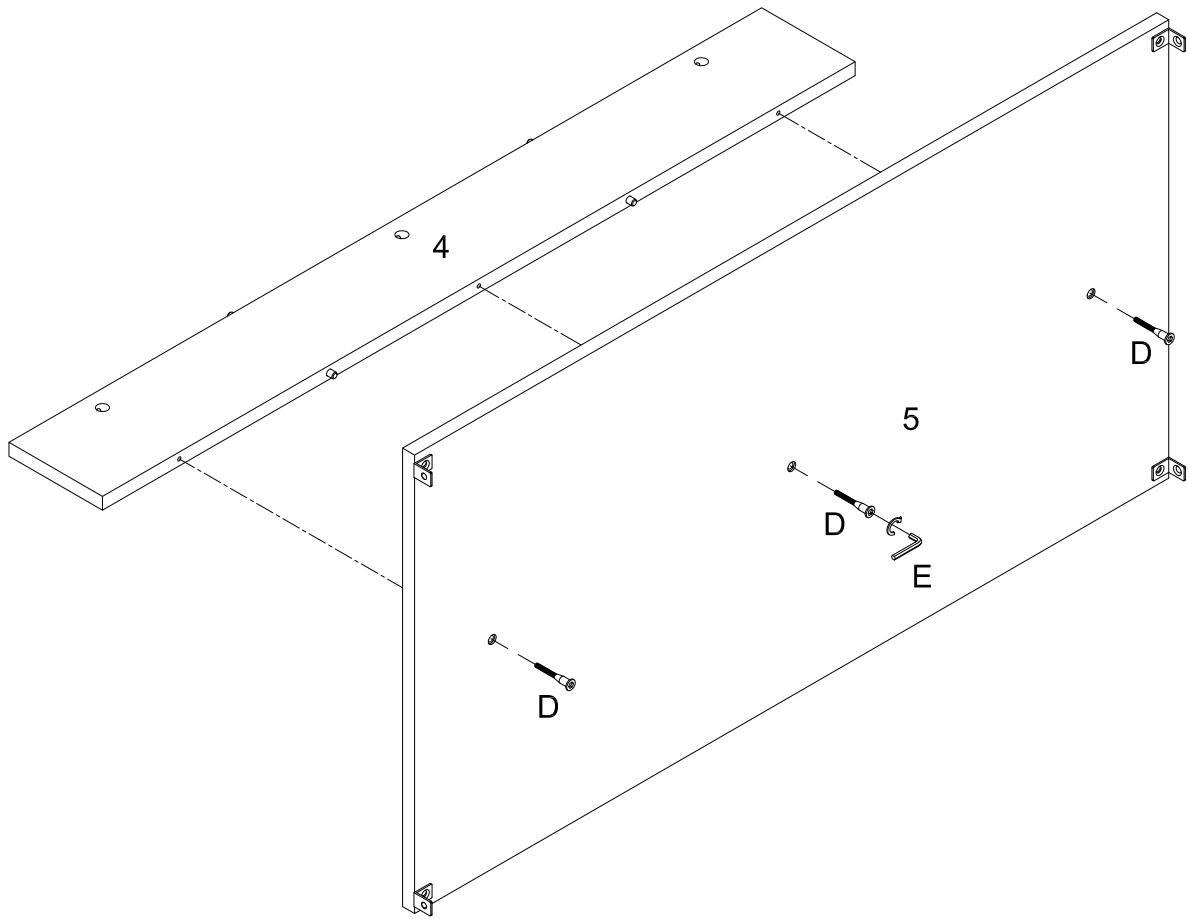
Insert wooden dowel (A) into part (4), then secure cam bolt (C) into part (1) with Philips head screwdriver as per diagram.

Step 4



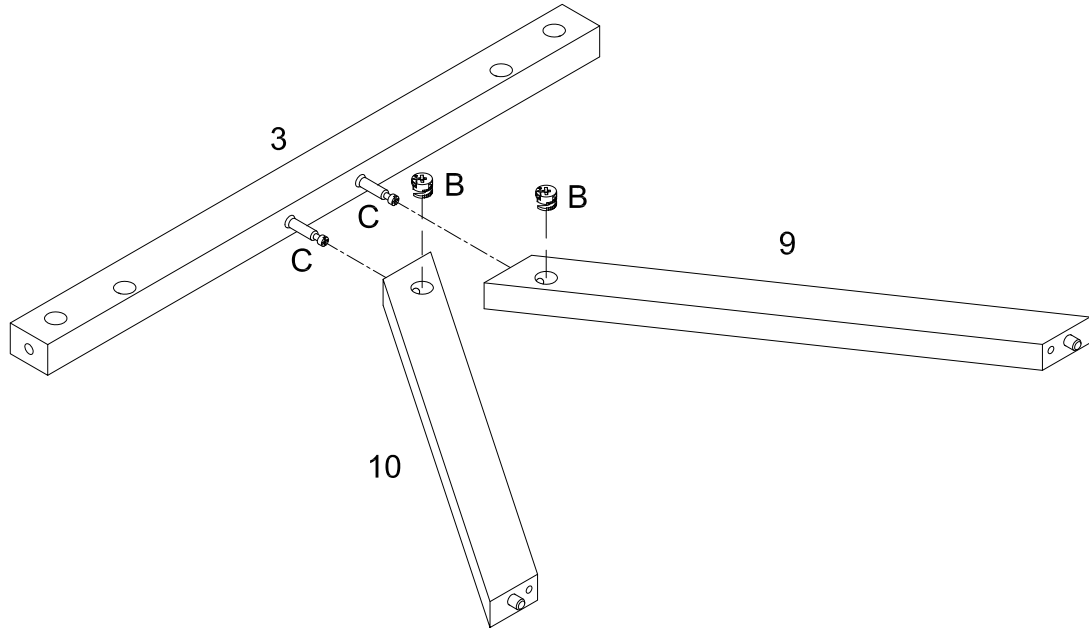
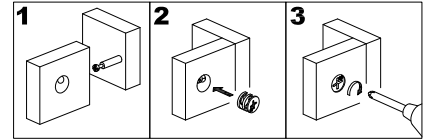
Using bolt (F) attach part (H) to parts (5,6) with hex key (E) as per diagram.

Step 5



Using screw (D) attach part (5) to part (4) with hex key (E) as per diagram.

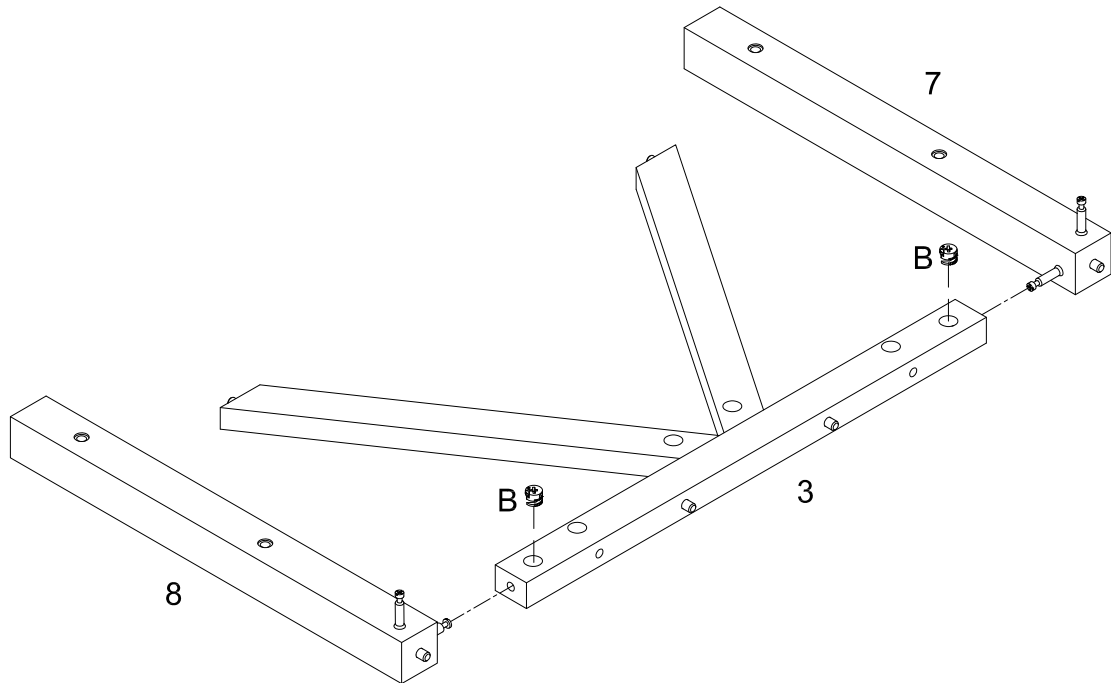
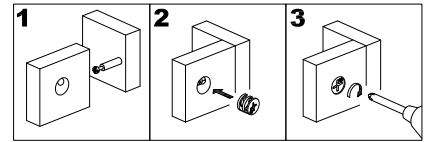
Step 6



x 2

Using cam lock (B) secure part (3) to parts (9,10) with Philips head screwdriver as per diagram.

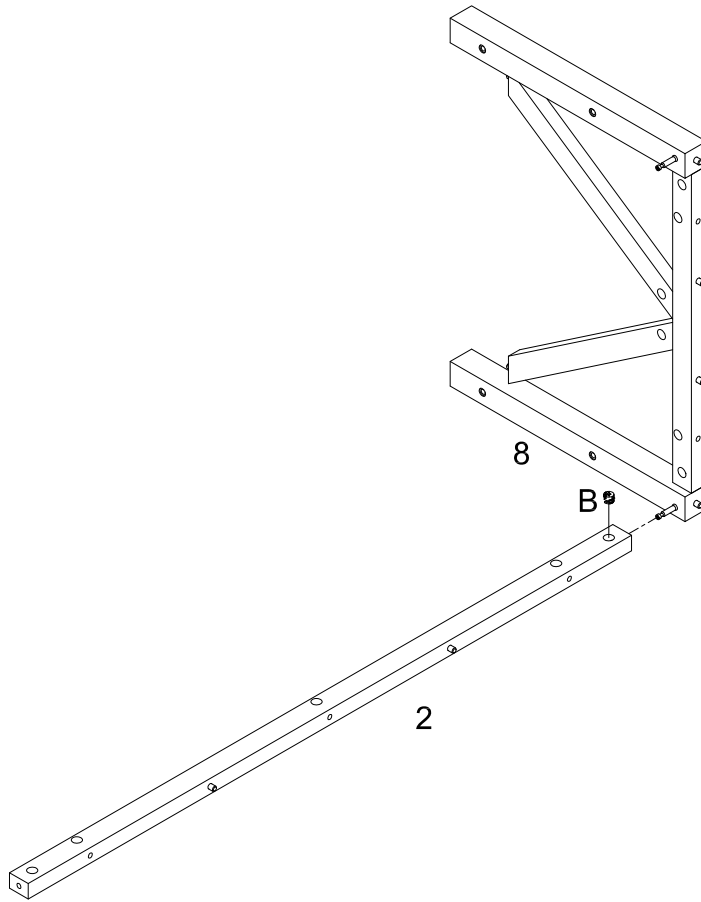
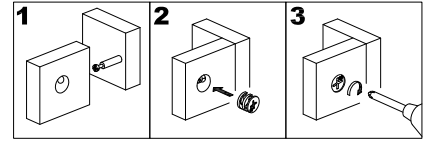
Step 7



x 2

Using cam lock (B) secure part (3) to parts (7,8) with Philips head screwdriver as per diagram.

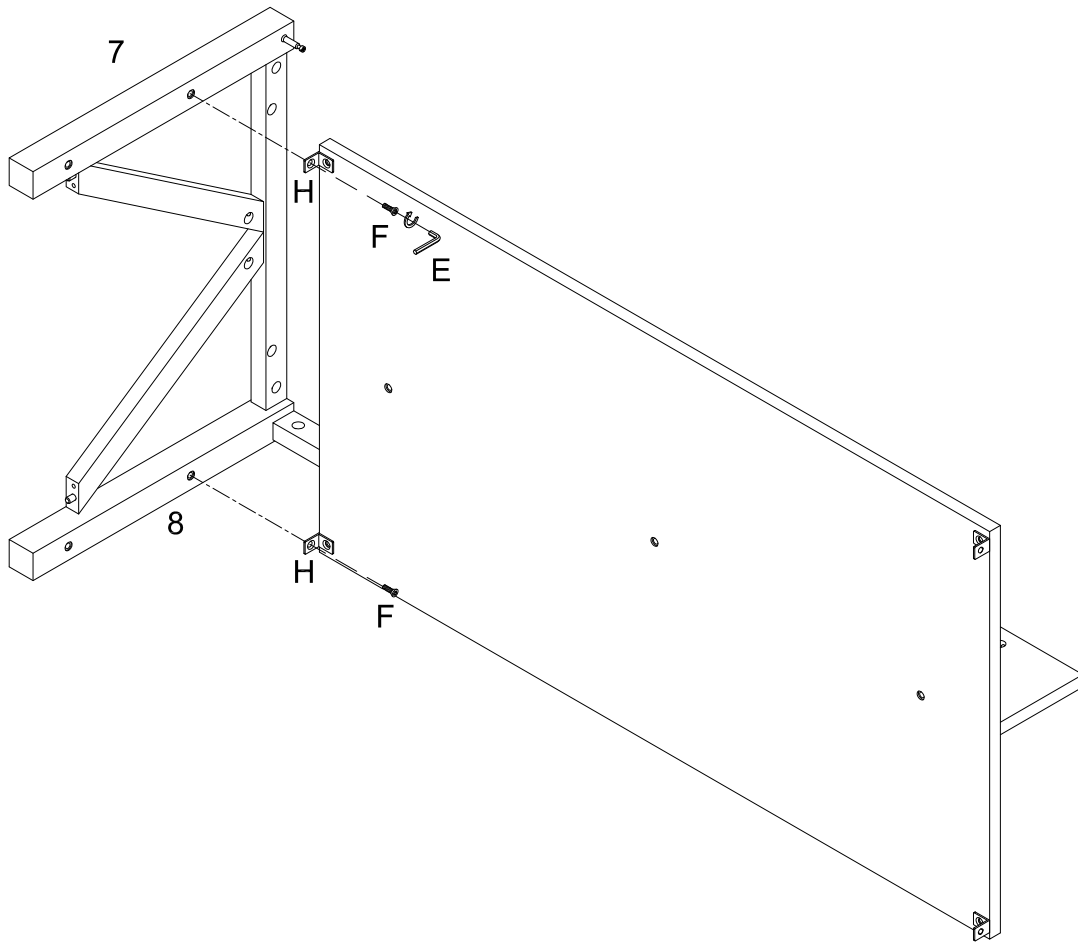
Step 8



x 2

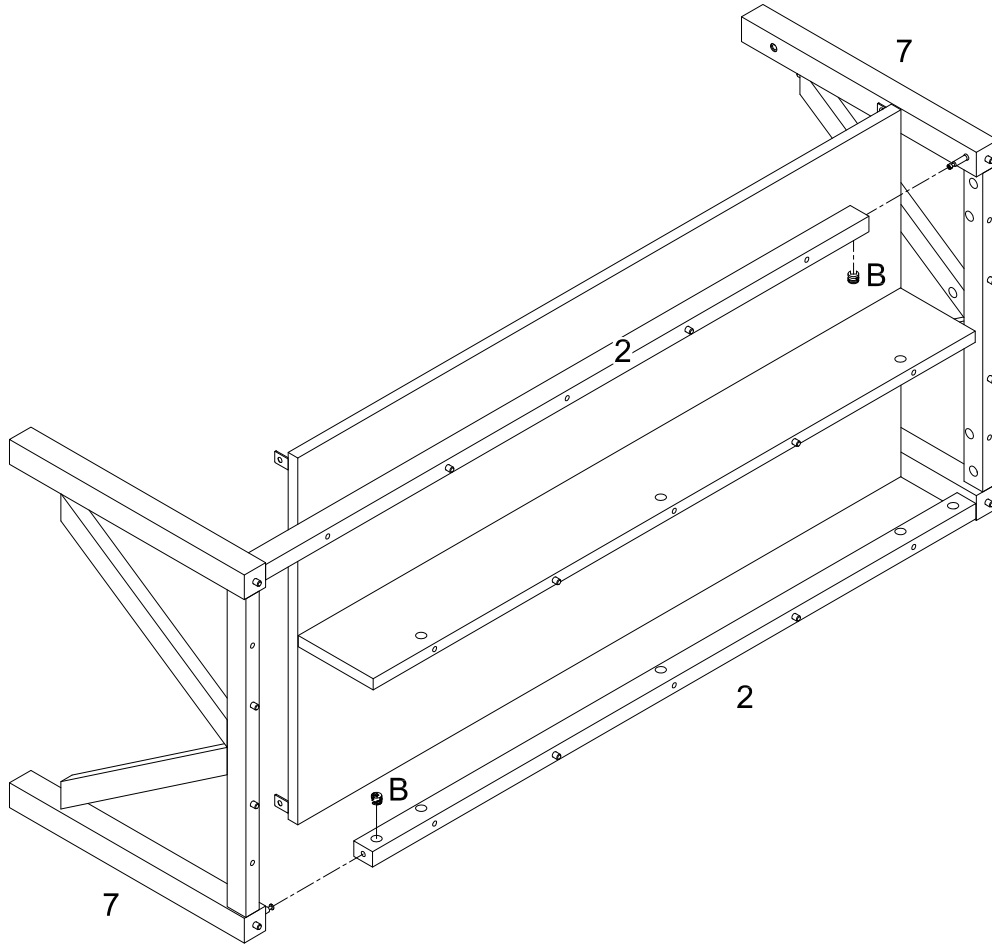
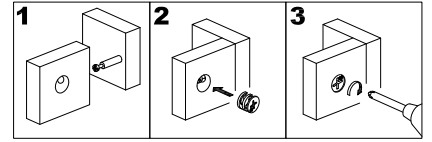
Using cam lock (B) secure part (2) to part (8) with Philips head screwdriver as per diagram.

Step 9



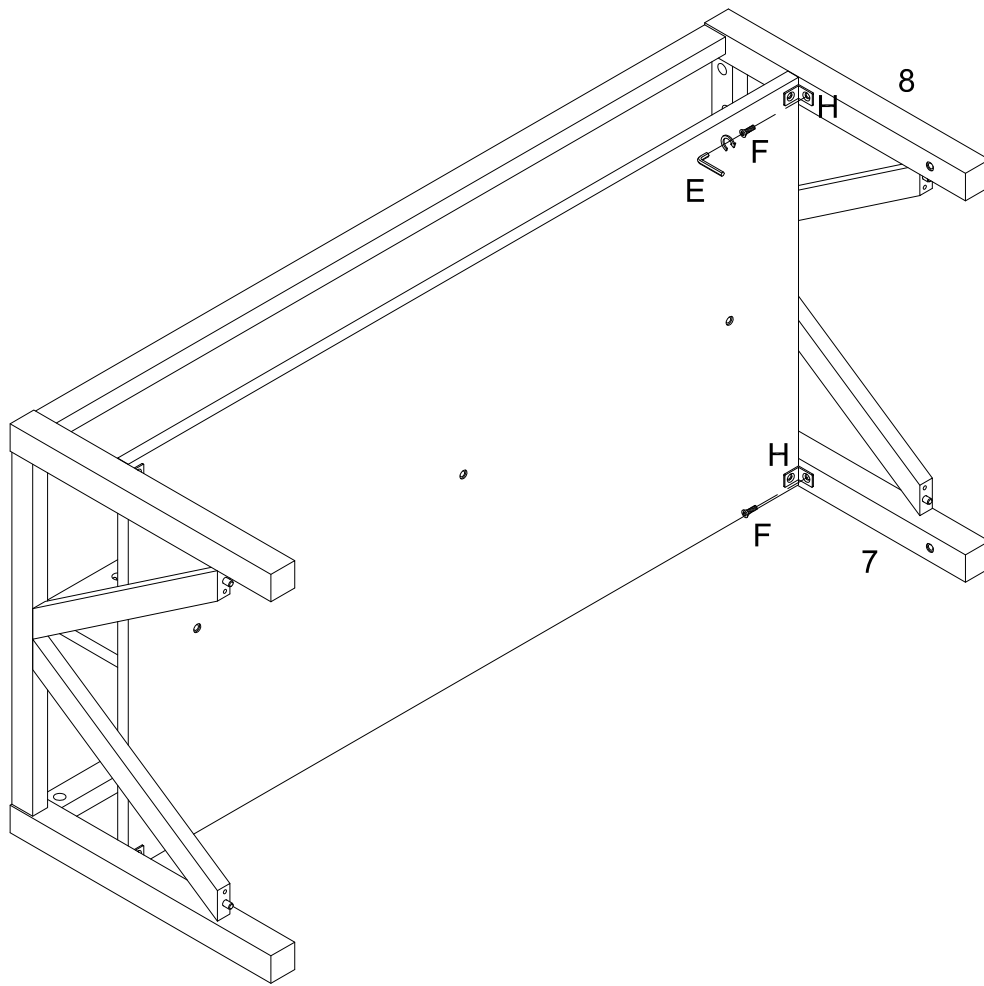
Using bolt (F) attach part (H) into parts (7,8) with hex key (E) as per diagram.

Step 10



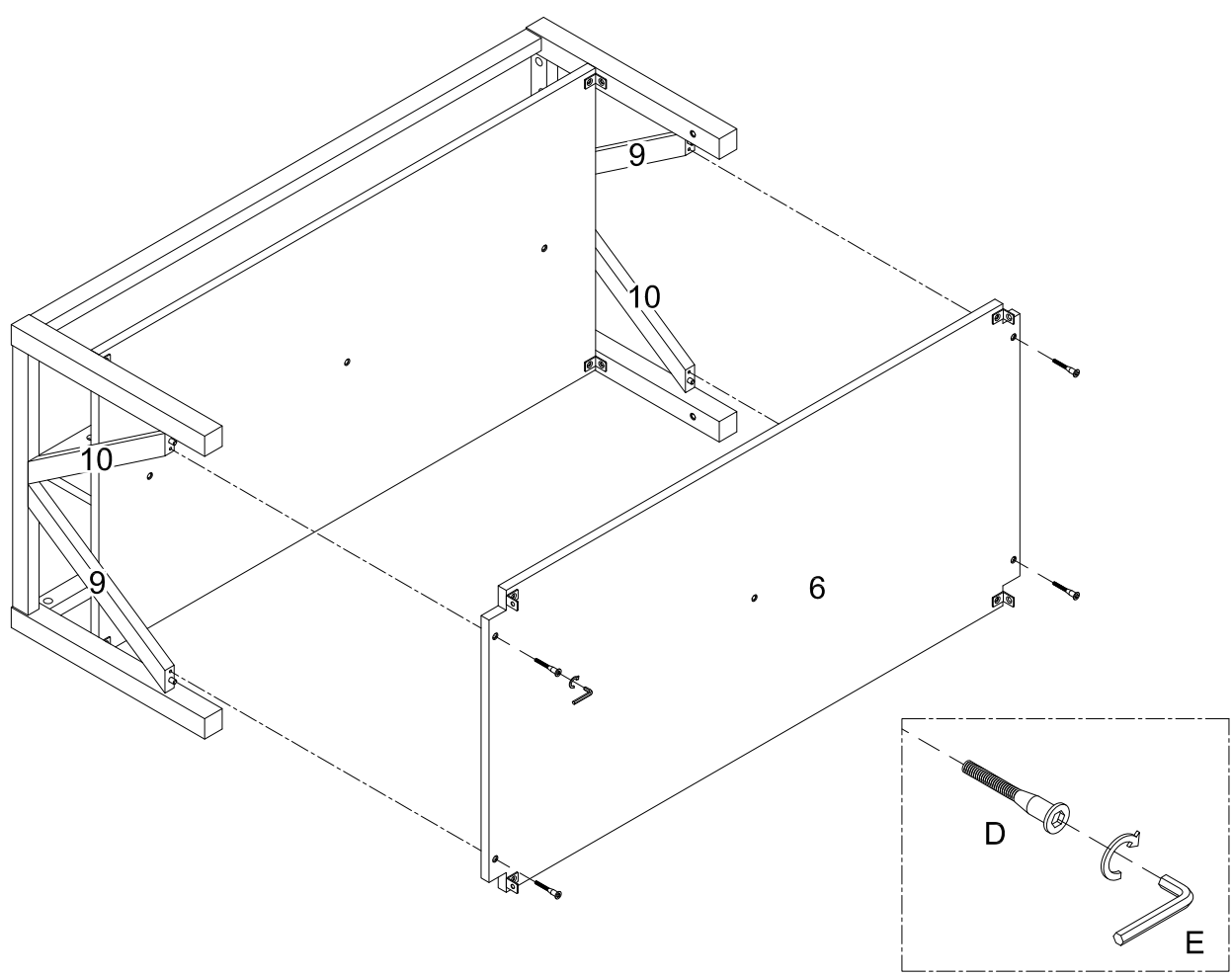
Using cam lock (B) secure part (2) to part (7) with Philips head screwdriver as per diagram.

Step 11



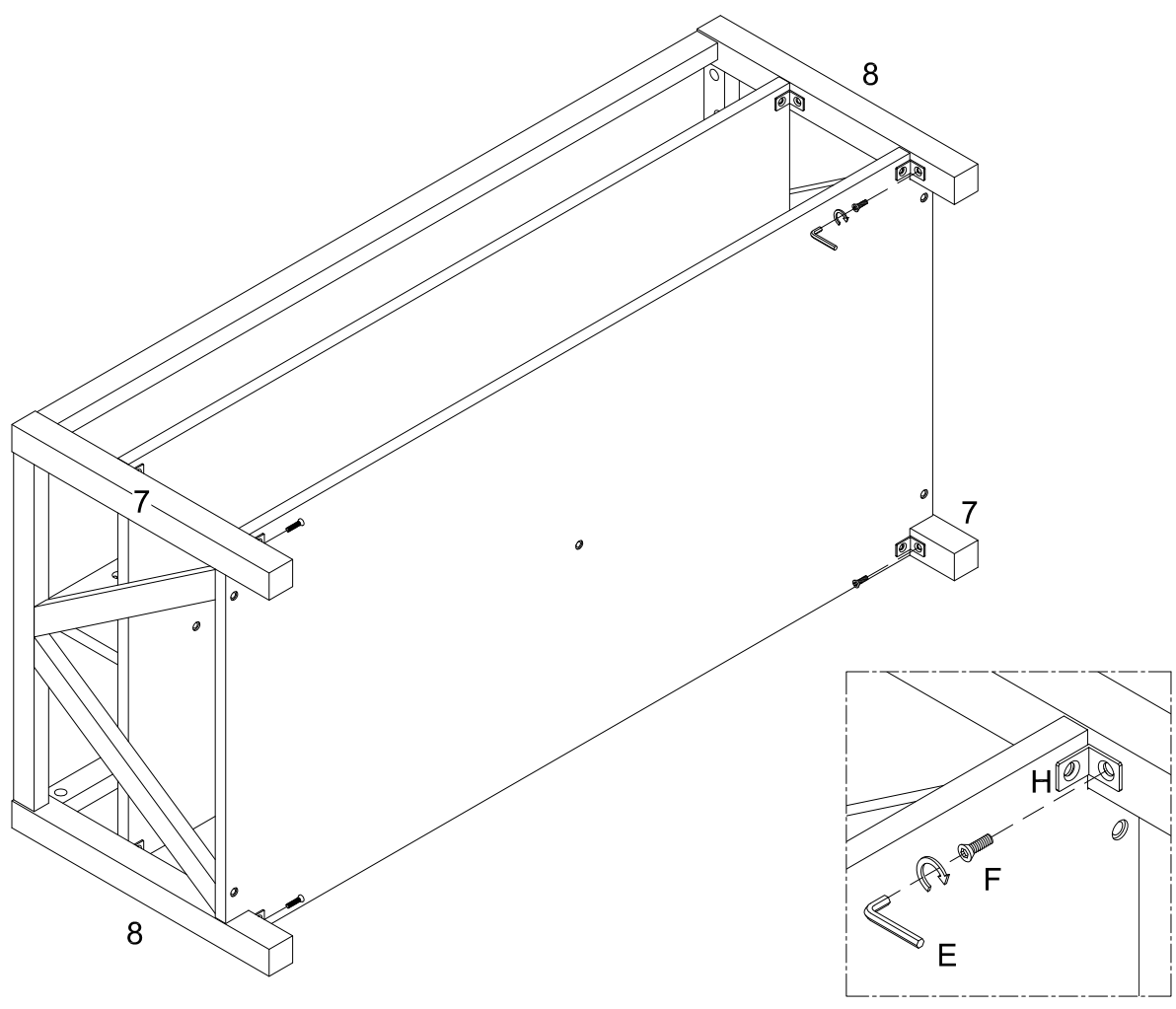
Using bolt (F) attach part (H) into parts (7,8) with hex key (E) as per diagram.

Step 12



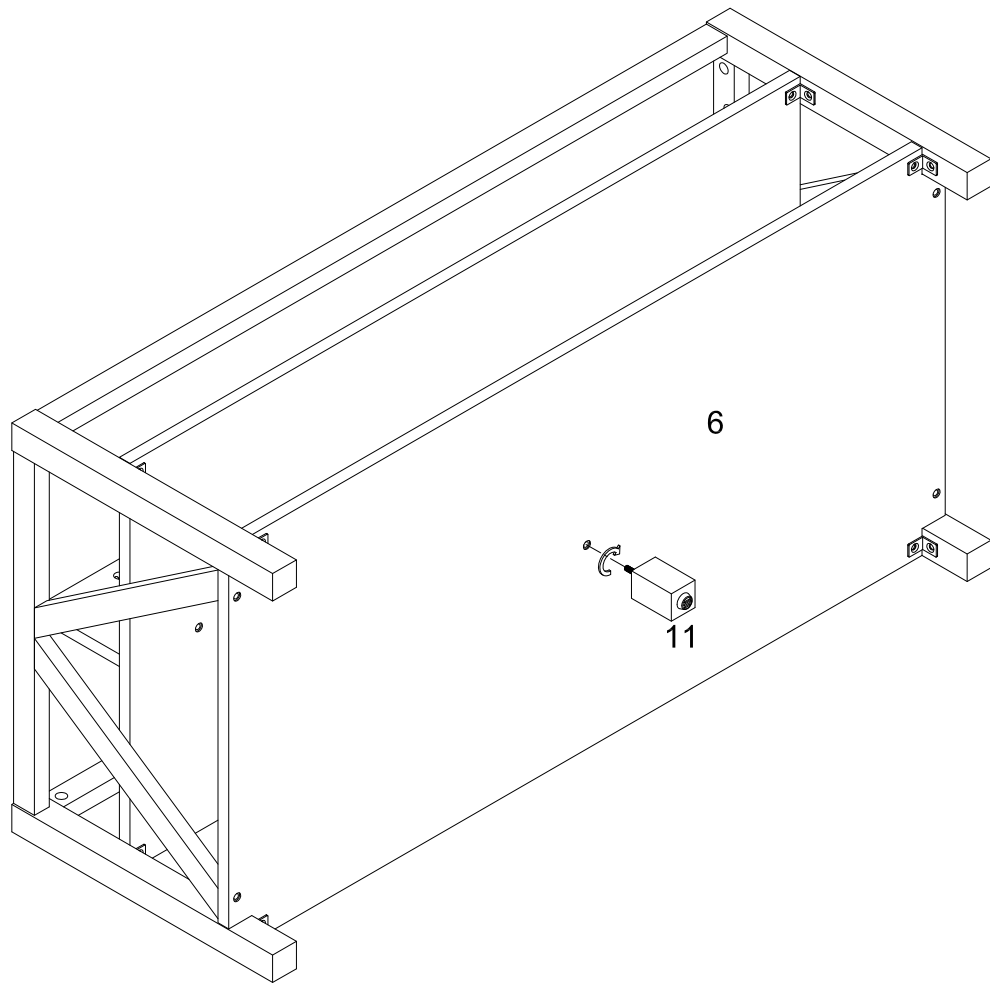
Using screw (D) attach part (6) into parts (9,10) with hex key (E) as per diagram.

Step 13



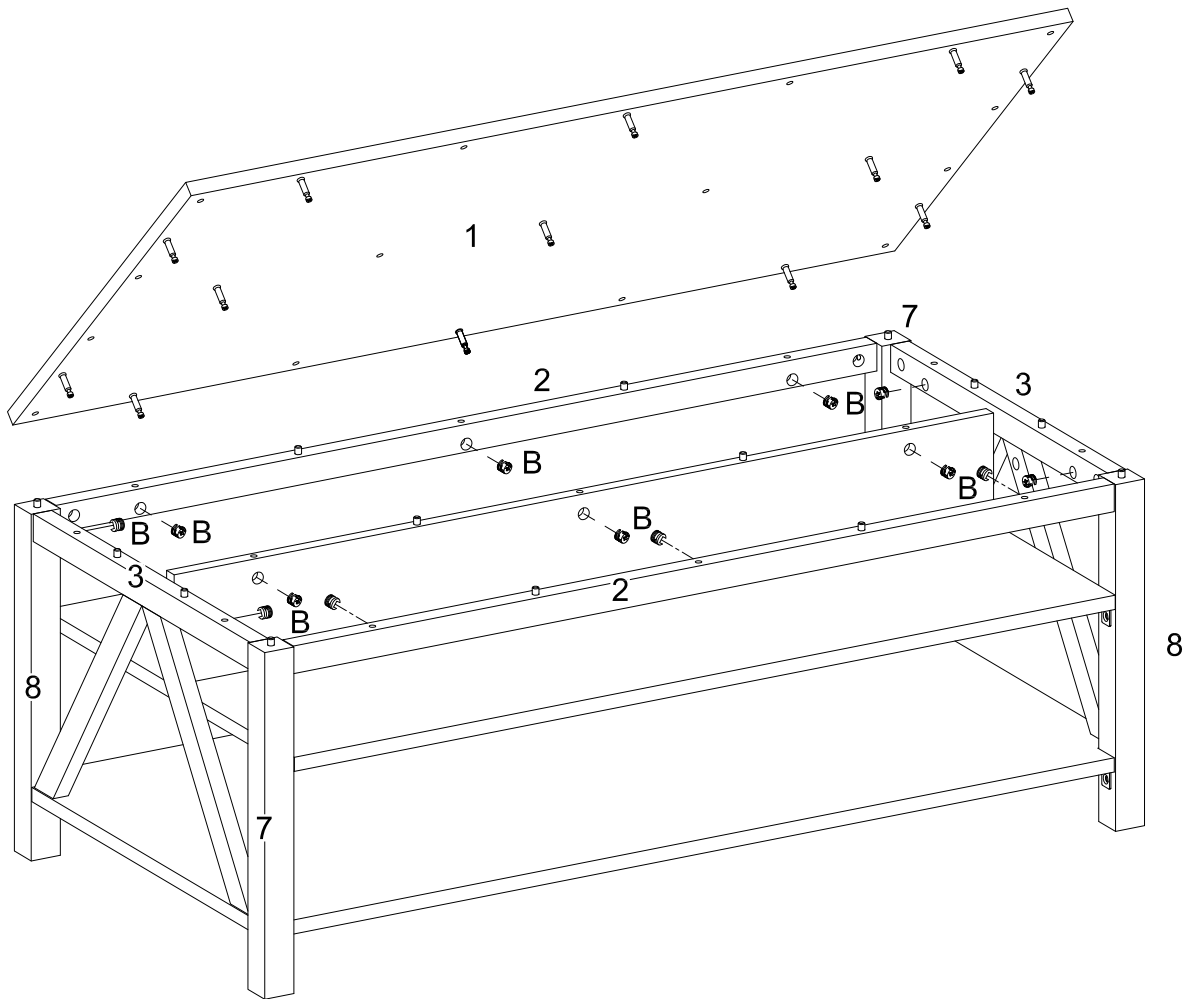
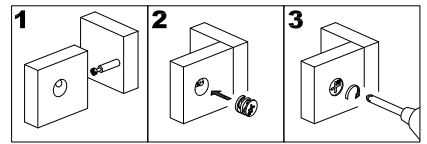
Using bolt (F) attach part (H) to parts (7,8) with hex key (E) as per diagram.

Step 14



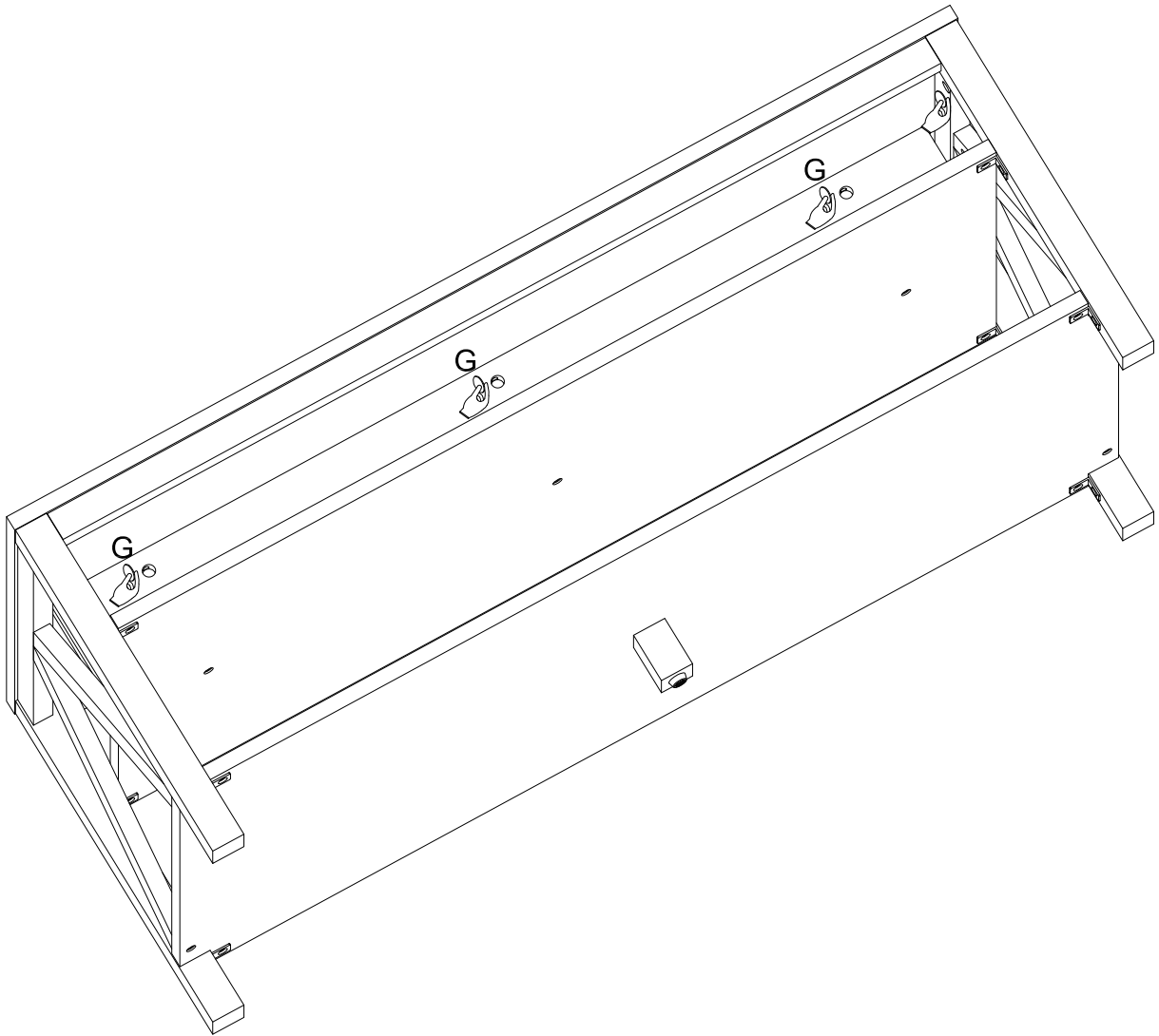
Attach the support leg as per diagram.

Step 15



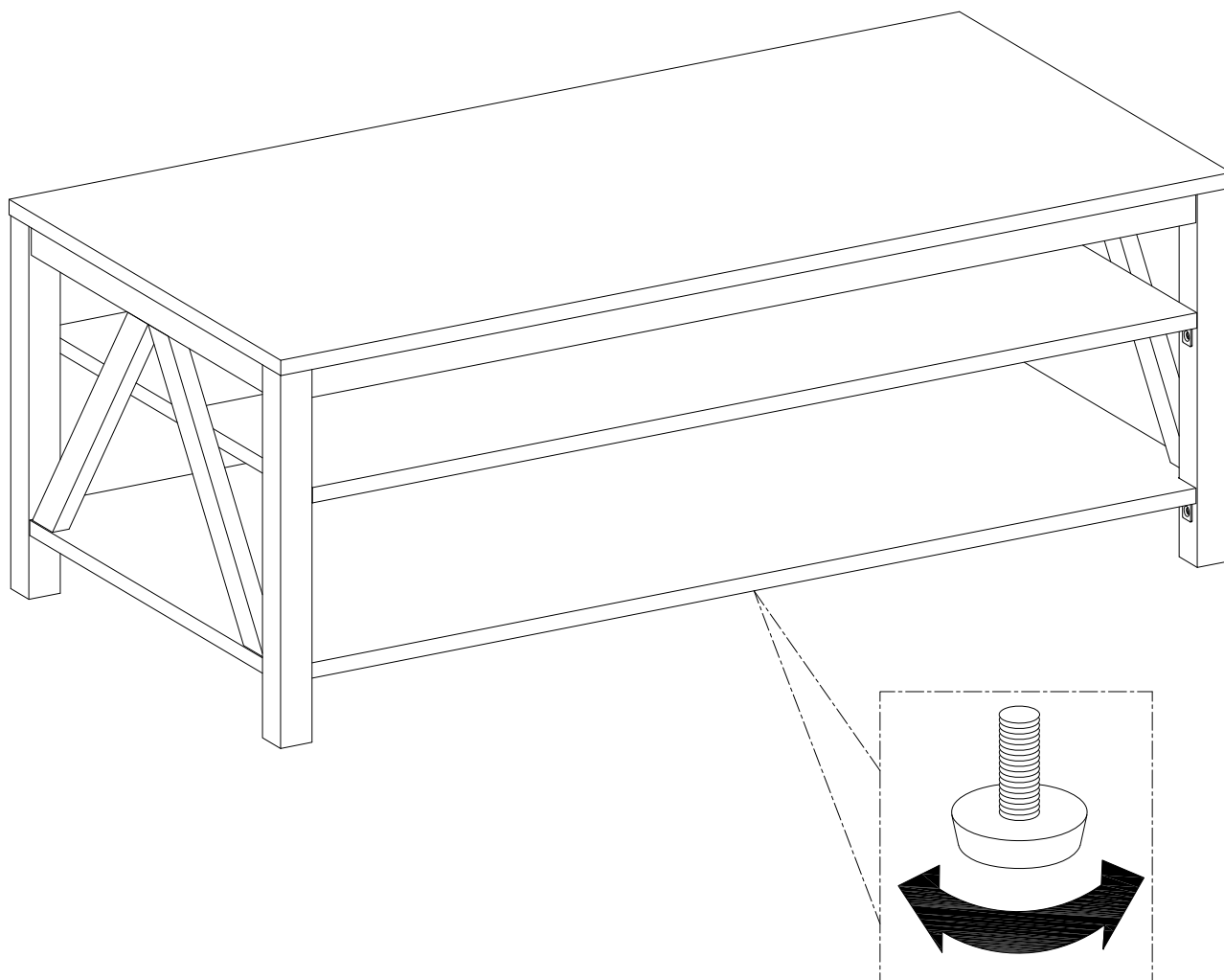
Using cam lock (B) secure part (1) with Philips head screwdriver as per diagram.

Step 16



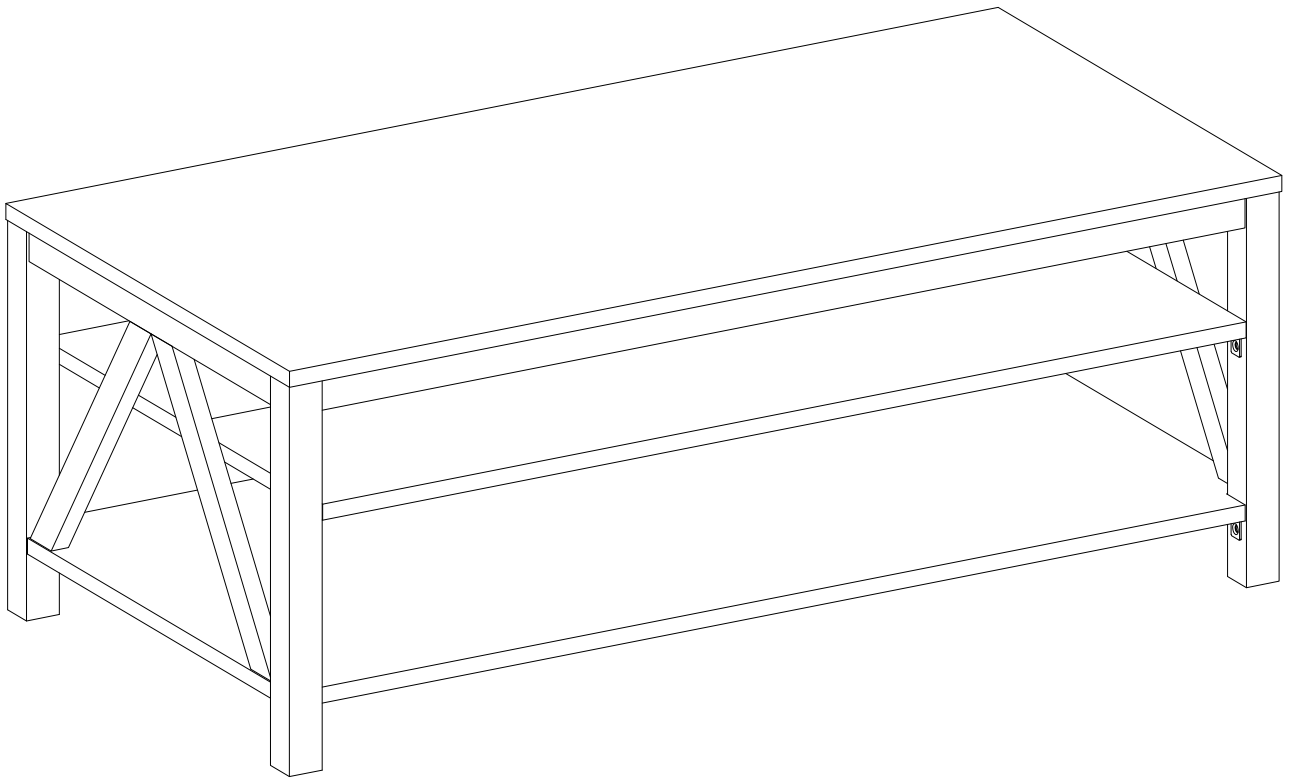
Place stickers (G) cover the holes as per diagram .

Step 17



If necessary adjust the floor leveler at the bottom of the support leg to level the unit .

Step 18



Final Assembly