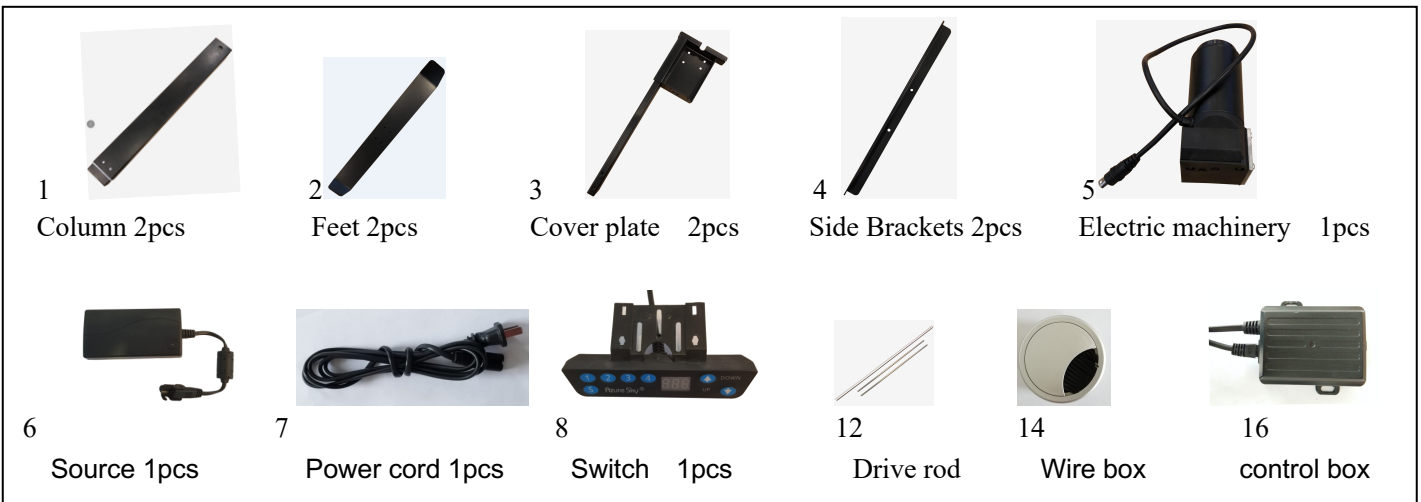


ASSEMBLY INSTRUCTIONS

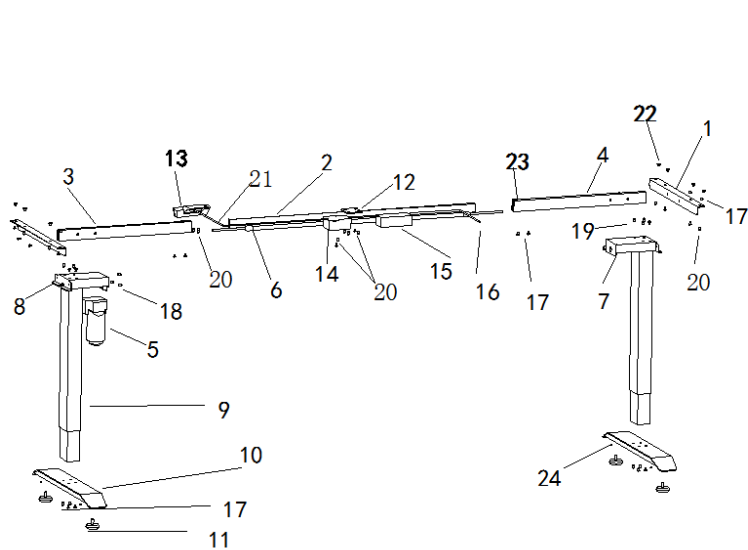
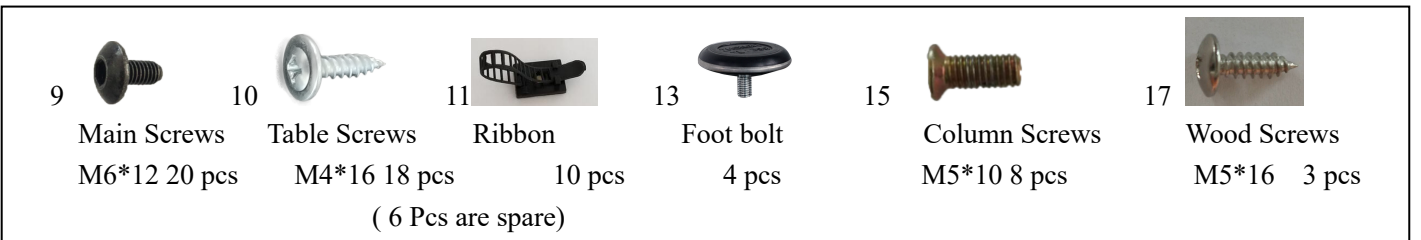
Tools required



Components



Hardware

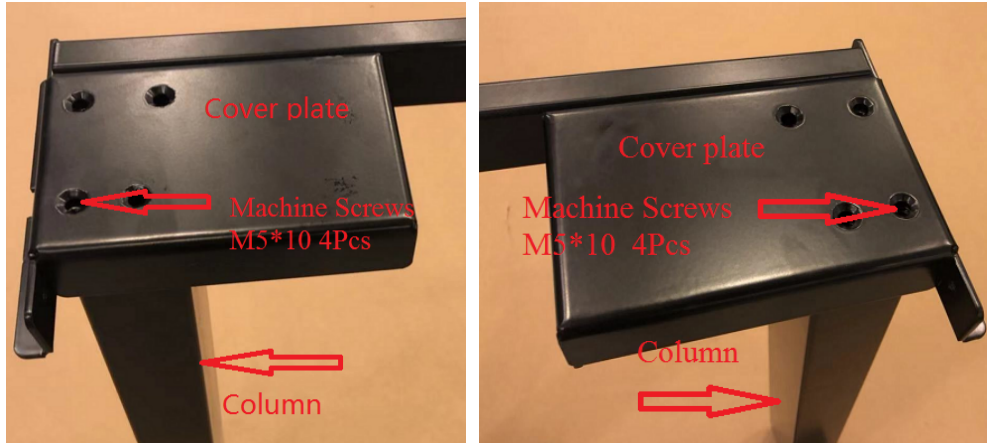


- 1. Side Brackets ----- 2
- 2. Connecting rod ----- 1
- 3. Left side pole ----- 1
- 4. Right side pole ----- 1
- 5. Electric Machinery ----- 1
- 6. Drive rod ----- 2
- 7. Right coverplate ----- 1
- 8. Left cover plate ----- 1
- 9. Column ----- 2
- 10. Feet ----- 2
- 11. Foot bolt ----- 4
- 12. Middle Plate ----- 1
- 13. Control panel ----- 1
- 14. Controller ----- 1
- 15. Power pack ----- 1
- 16. Electric wire ----- 1
- 17. Main screw ----- 20
- 18. Electric machinery screw ----- 3
- 19. Column screw ----- 8
- 20. Table screw ----- 10
- 21. Ribbon ----- 10
- 22. PVC circle ----- 8
- 23. Sponge mat ----- 2
- 24. M8 screw ----- 4

ASSEMBLY INSTRUCTIONS

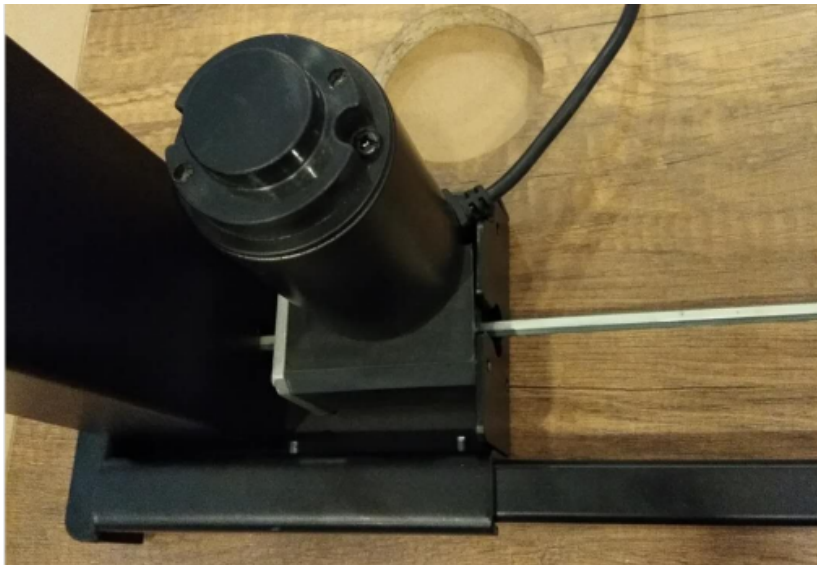
Step 1. Fix the column and cover plate, two pieces in total.

Please install the frame correctly as shown in the diagram.



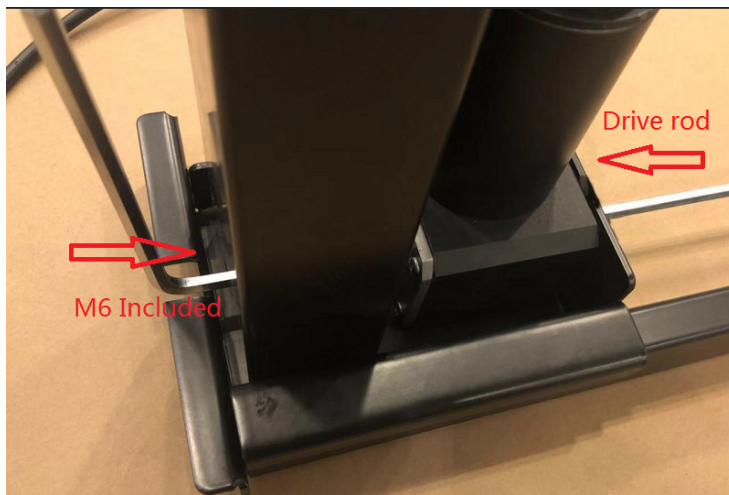
Step 2. Install hex bar and motor

Connect the motor and the column with a hexagon drive rod.

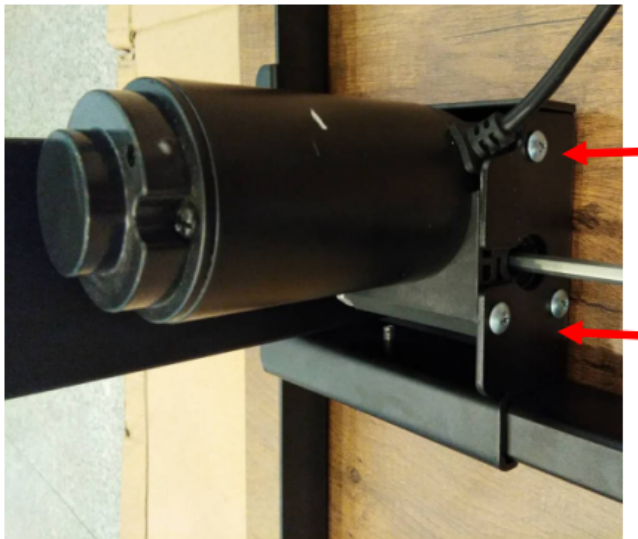


Please note that if the hexagon drive rod cannot be inserted into the column, please use the M6 hexagon wrench to slightly turn left and right as shown in the figure, and then insert the hexagon drive rod into the column with force.

ASSEMBLY INSTRUCTIONS



Fix the motor and cover plate



Step 3. Install the extension and drive rods.



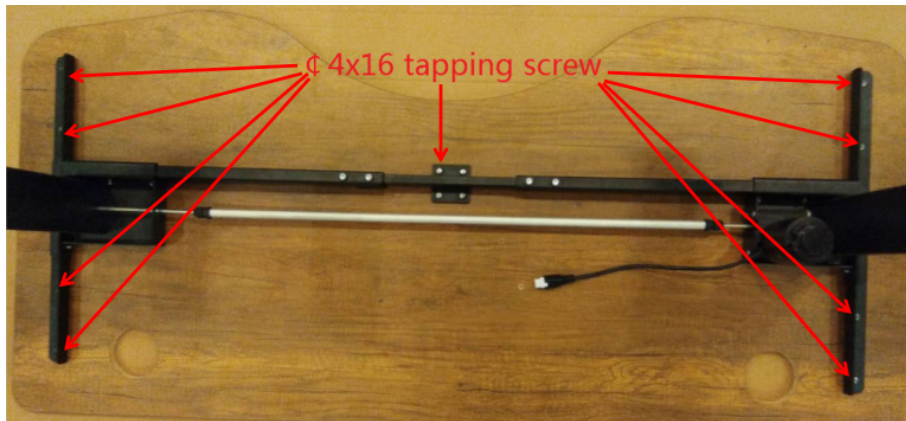
Step 4. Install side Brackets.

ASSEMBLY INSTRUCTIONS



Step 5. Install table panel

(1) Put the mounting part on the desktop panel, move and calibrate the hole position. Use $\varnothing 4 \times 16$ self-tapping screws to install the desktop board.

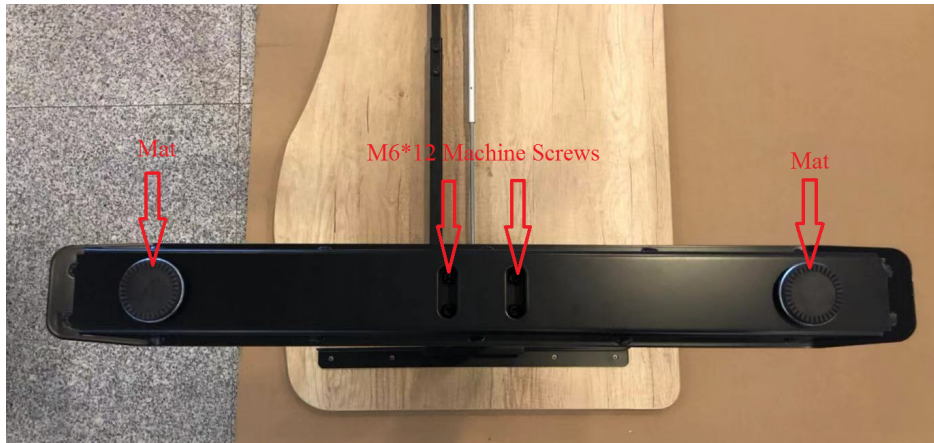


(3) As shown in the figure below, fix the cover plate and extension rod with M6 * 12 screws, and fix the transmission rod.

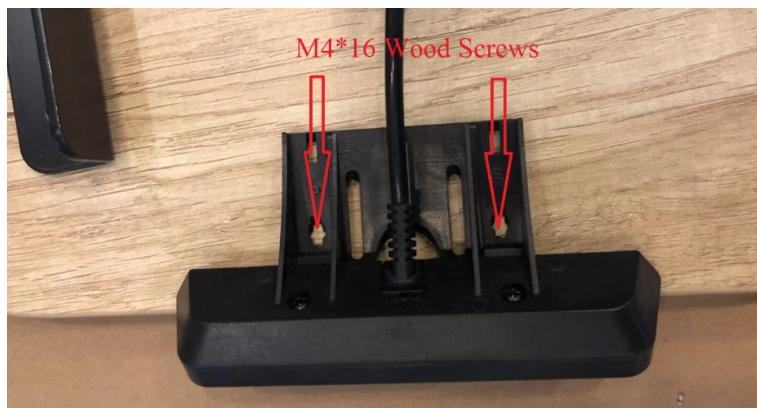


(4) As shown in the figure below, fix the column and foundation with M6 * 12 screws and install the foot pad.

ASSEMBLY INSTRUCTIONS



(5) As shown in the picture, a manual control device is installed.



(6) As shown below, connect the power and equipment to the connecting line and secure the wire to the desktop board with a wire clip.



(7) Put the desk frame in place and install the wire box.

ASSEMBLY INSTRUCTIONS



Step 7. Place the desk in ideal position and start using!

Please reset before using for the first time !!!

【INSTRUCTIONS】

1. Insert the hexagonal poles from both left and right cross holders to matching gearboxes.

⚠️ (1). Make sure the height of left and right legs is the same while inserting;

⚠️ (2). If it's difficult to connect, you can use M6 Allen key to do fine tuning on the outside of column.

2. Lead in electric supply (240V or 100V AC) to controller according to controller's nameplate: digital will show "27.5". It means the system is normal and can be operated;

3. Press the "up" key to rise the desk and release the key to stop.

4. Press "down" key to descend the desk and release the key to stop.

ASSEMBLY INSTRUCTIONS

5. Set the memory position: when desk reaches suitable height and stops, firstly press “S” key, the numbers on display will start jumping, press any key from 1,2, 3 and 4, the numbers will stop jumping, then the desk’s position is remembered; 1, 2, 3 and 4 of hand controller means the system can remember 4 different positions; and it can repeat to cover the memory, power interruption will not lose memory. After the desk’s position is remembered, you just need to press the matching position key and the whole desk will automatically move to the position; If you want to stop the automatic moving , press “up” or “down” key on the hand controller! You can operate as normal after column stops.

6. If the desk needs to change hand controller, just use “manual reset” to reset to normal indication.

(1) Manual reset-----Abruptly cut off power during normal operation and connect with power again, if the digital display shows “RSF”, then it needs to be reset;

Method: 1. Press the “down” key, the desk will start dropping, digital display shows “RSF”. When desk drops to the end, continue to press the “down” key, 2 seconds later, the display will show "RSF" and the desk will rise again. When display shows 27.5, reset is completed (Note: This reset process done by pressing and holding the down), the hand controller shows “27.5”-prompt, which means the column has already dropped to the minimum. When column rises to the maximum, the hand controller

ASSEMBLY INSTRUCTIONS

shows “45.2”-prompt which means the column has already risen to the maximum.

【REMARKS】

1. If the desk suddenly loses power during operation, the digital display will show “RSF” after re-powering, indicating that the desk needs to be reset; Reset method: 1. press the “down” key and the desk will start to drop, and the digital display will show “RSF”. When desk drops to the bottom, continue to press the “down” key, 2 seconds later, the digital display will show "RSF". The desk will rise again when display shows "27.5" and reset is completed (Note: This reset process is done by pressing and holding the down key);

2. When the temperature in the controller exceeds 75°C, the digital display will show “HOT”. In the case of uninterrupted power, the motor can be operated normally only when the temperature of the controller drops to to 45°C.

3. Working protection: After running 3-4 times continuously, the controller will start the protection. The hand controller will show “HOT” digitally and the 20 minutes alarm will be automatically released.

4. Over-current protection: unilateral putter’s load exceeds 1200N, the system will start an overcurrent protection and the entire desk will stop working.

【CAUTION】

ASSEMBLY INSTRUCTIONS

1. Product should be used according to technical specifications.
2. Keep away from corrosive gas and dusty environment, pay attention to waterproofing.
3. Contact with us if there are any problems.

【WARRANTY】

1. In the warranty period (one year from the date of purchase), used under normal circumstances and the faults are caused by product's quality problems;
2. Do not open the product without permission, otherwise warranty will not be covered.