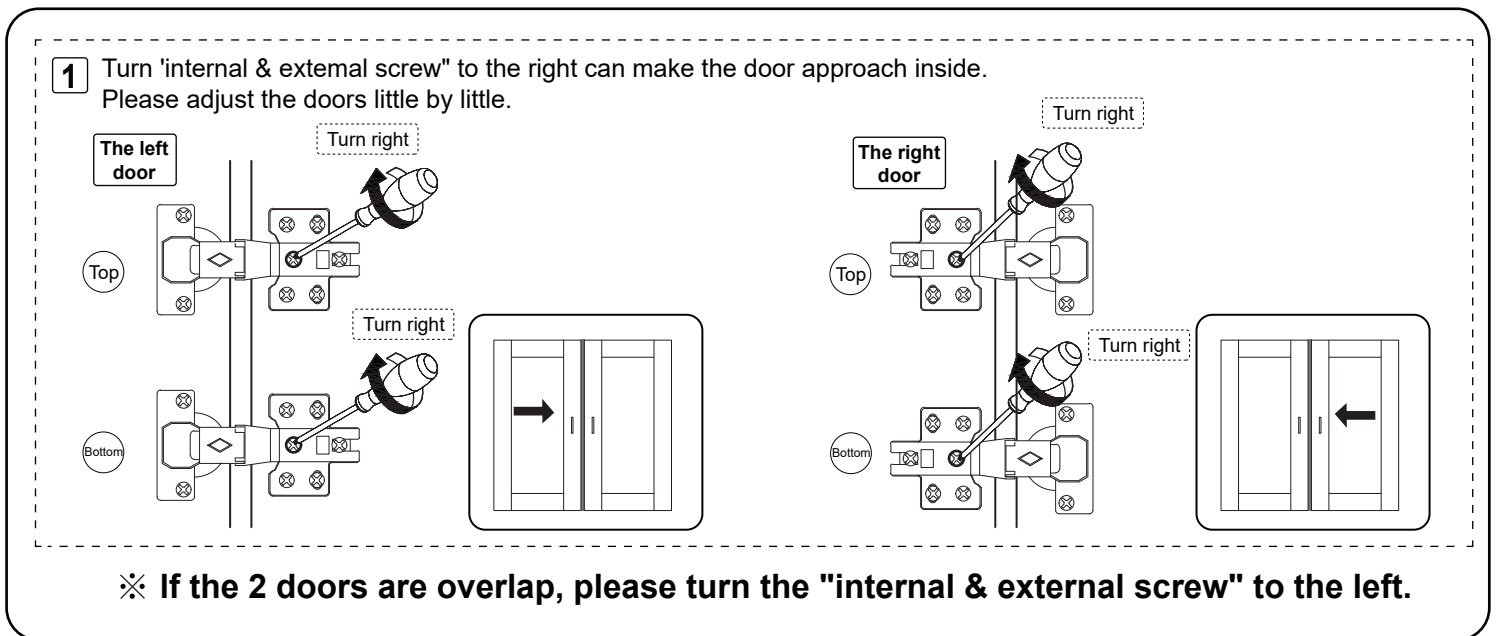
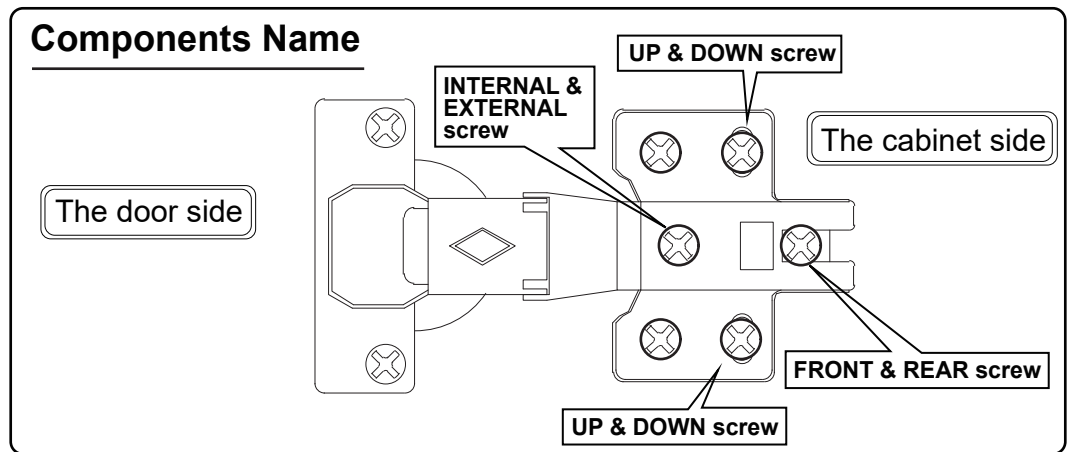
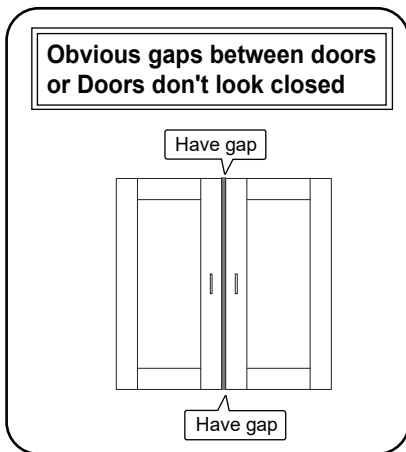


# The Ways To Adjust The Door



## ⚠ Warm Note:

- Before adjusting the hinge, please check whether the cabinet is skewed.
- If the skew can not be repaired, please remove the anti-tipping device first, then adjust the cabinet to vertical position.
- Please adjust the hinge with the door open.
- Please operate it with more than 2 people. One person holds the door and the other one adjusts the screw.