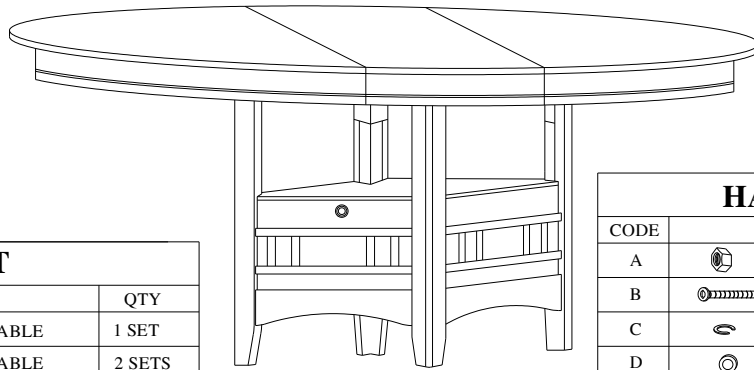


# ASSEMBLY INSTRUCTION



PART LIST		
NO	DESCRIPTION	QTY
1	WALL SIDE TABLE	1 SET
2	WALL SIDE TABLE	2 SETS
3	DOOR SIDE TABLE	1 SET
4	TABLE TOP	1 SET
5	TABLE LEG	4 PCS
6	UPPER PANEL COVER	1 PC
7	LOWER PANEL COVER	1 PC

HARDWARE LIST		
CODE	DESCRIPTION	QTY
A	5/16" HEX NUT	4 PCS
B	5/16" x 2" BOLT	14 PCS
C	5/16" SPRING WASHER	18 PCS
D	5/16"x1mm FLAT WASHER	14 PCS
E	5/16"x2mm FLAT WASHER	4 PCS
F	$\varnothing 3.5 \times 15$ SCREW	4 PCS
G	HINGE	1 PC
H	ALLEN KEY	1 PC
K	WRENCH	1 PC

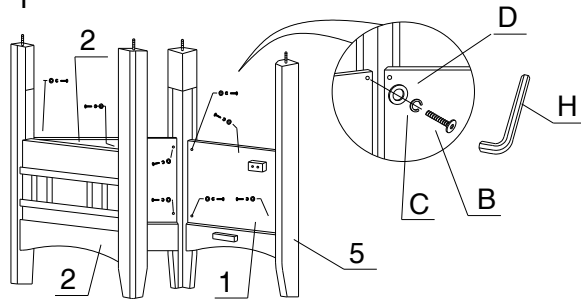
## ASSEMBLY TIPS :

1. Please check to see that all hardware and parts are present prior start of assembly.
2. Please follow attached instructions in the same sequence as numbered to ensure fast & easy assembly.

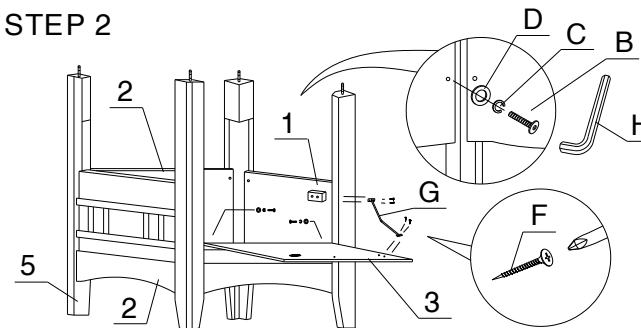
## Warning !

1. Don't attempt to repair or modify parts that are broken or defective. Please contact the store immediately.
2. This product is for home use only and not intended for commercial establishments.

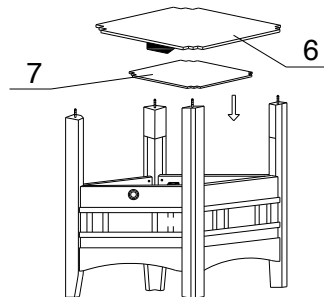
### STEP 1



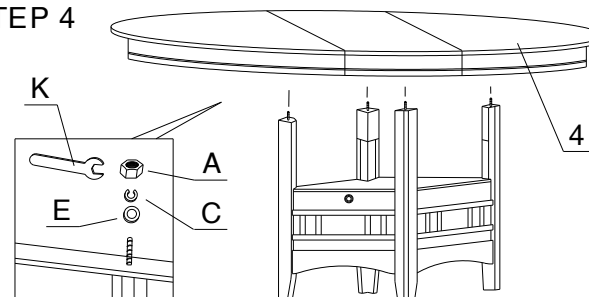
### STEP 2



### STEP 3



### STEP 4



### STEP 1

POSITION TABLE TOP (4) UPSIDE DOWN ON A SOFT FLAT SURFACE AND BE CAUTION DURING ASSEMBLY TO PREVENT SCRATCHES TO THE TABLE TOP.

THEN POSITION EACH TABLE LEG (5) EQUALLY BETWEEN THE TWO ADJOINING APRONS. USE A LOCK WASHER (C & D) AND HEX NUT (A) TO LOOSELY TIGHTEN EACH LEG.

THEN TIGHTEN THE TABLE LEG (5) USING AN WRENCH (K) UNTIL THE LEGS ARE SECURED.

### STEP 2

STAND THE TABLE TO UPRIGHT POSITION, THE ASSEMBLY COMPLETED.