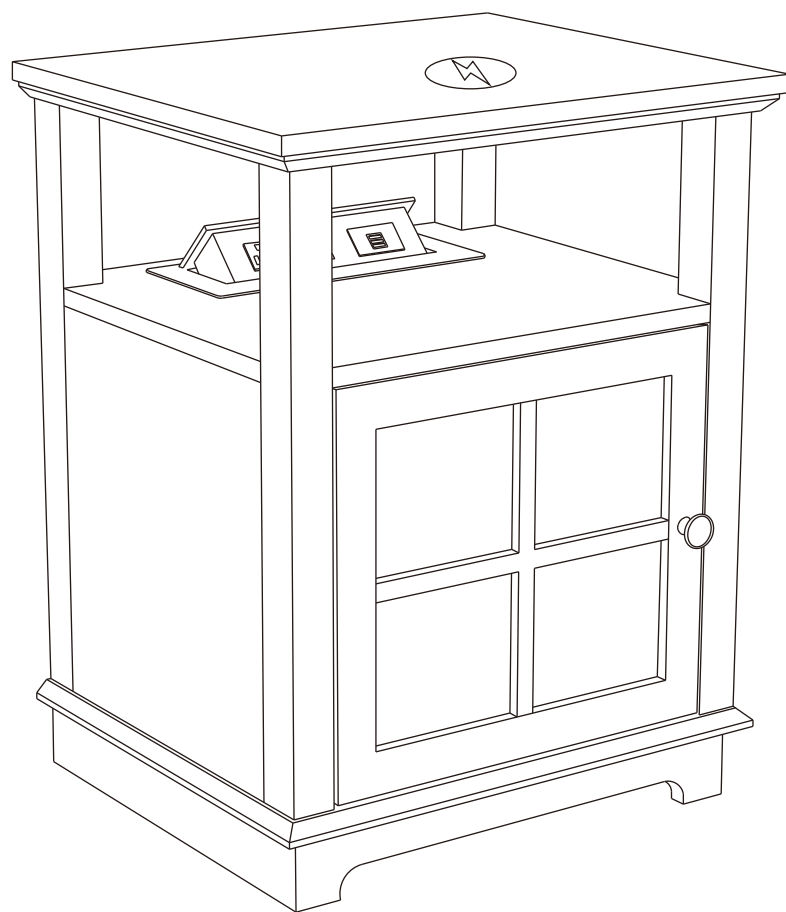


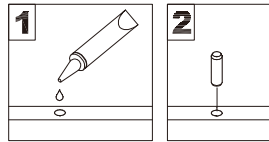
User Manual

Nightstand

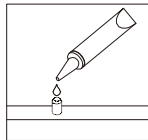


General Assembly Guidelines

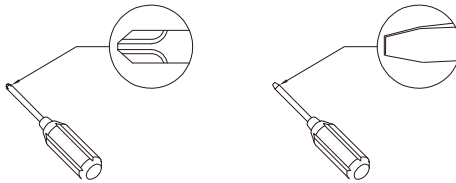
- I .Please ensure that all parts and hardware are available before assembly.
- II . Follow each step carefully to ensure the proper assembly of this product.
- III. For ease of assembly, two people are recommended to assemble this product.
- IV. The three main types of hardware are: wood dowels , screws and bolts.
- V . The glue is to secure wood dowels in place. When first inserting dowels, locate the appropriate hole for the dowel, and place a small amount of glue in the hole then insert the dowel. Please remember wipe away the excess glue immediately.



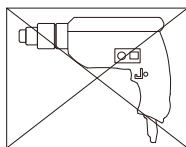
The dowels are necessary to attach assembly parts together in the following steps. Place a small amount of glue on the end of the dowel before attaching parts together. Please remember wipe away the excess glue immediately.



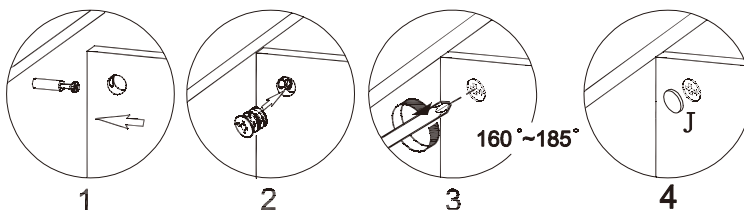
- VI. A Phillips head screwdriver is required for the assembly of this product.



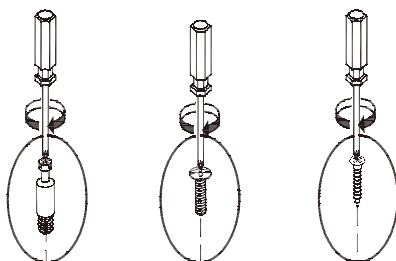
- VII. Power tools should not be used when assemble this product.



- VIII. Steps for assembly of three-in-one screws.

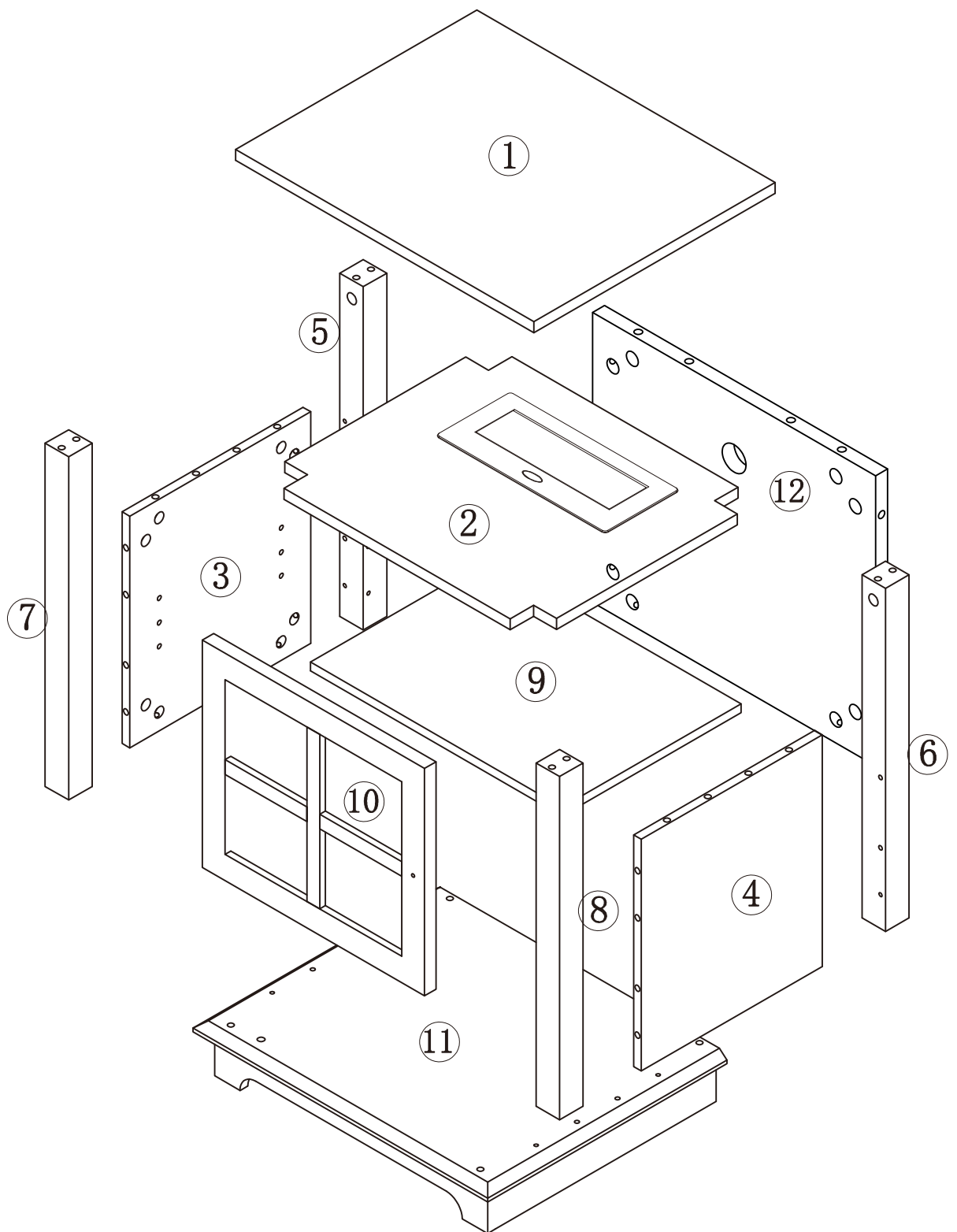


- IX. Screw fixation diagram for all fittings.

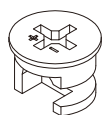


Parts List

- ① x 1
- ② x 1
- ③ x 1
- ④ x 1
- ⑤ x 1
- ⑥ x 1
- ⑦ x 1
- ⑧ x 1
- ⑨ x 1
- ⑩ x 1
- ⑪ x 1
- ⑫ x 1

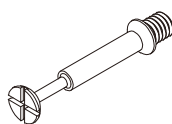


Hardware List

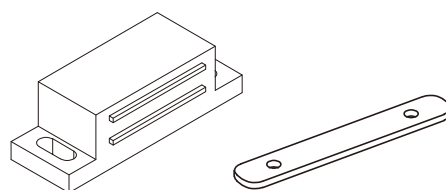


Ø15

A x 28+1pcs



B x 28+1pcs



C x 1pc+1pc



Ø2.9*14mm

D x 4pcs

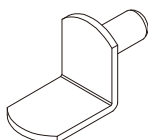


E x 1pc

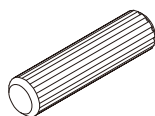


Ø5/32" * 22mm

F x 1pc

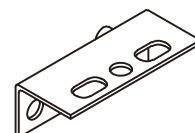


G x 4pcs



Ø8*30mm

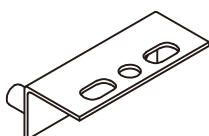
H x 32+1pcs



I x 1pc



J x 24+1pcs



K x 1pc

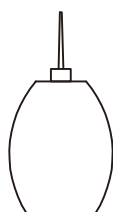


Ø3.9*15mm

L x 4pcs



M x 2pcs



N x 1pc



Repairing color pen x 1pc

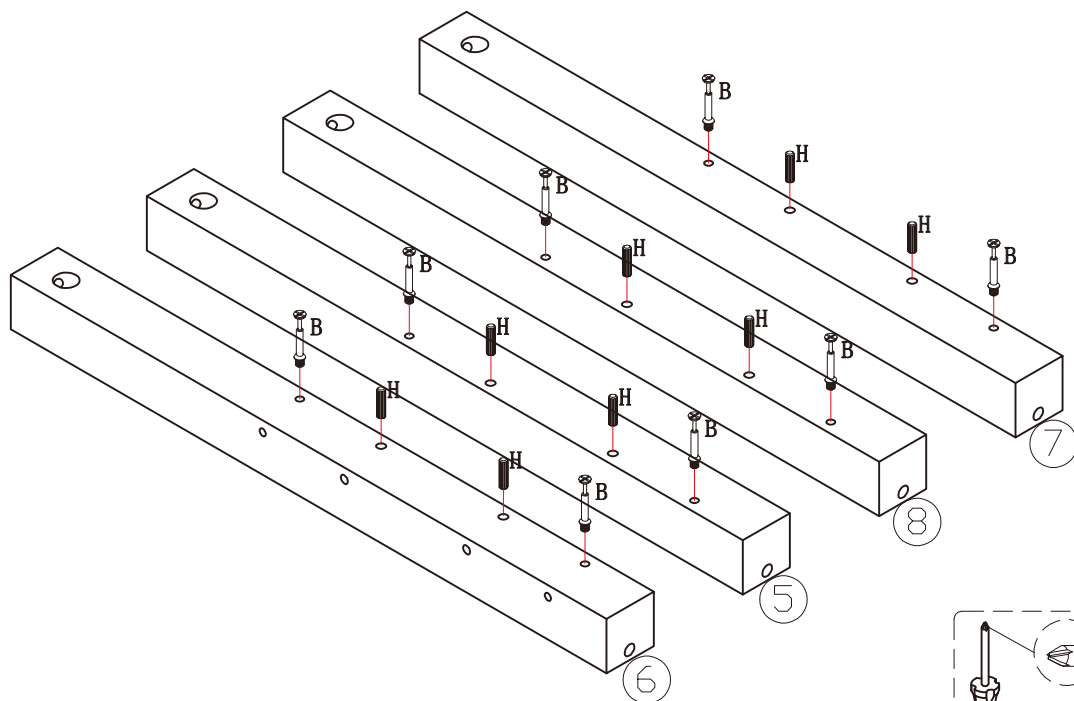
STEP#1



B x 8



H x 8

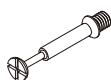


Attach (B) and(H) to parts(5)(6)(7)(8).

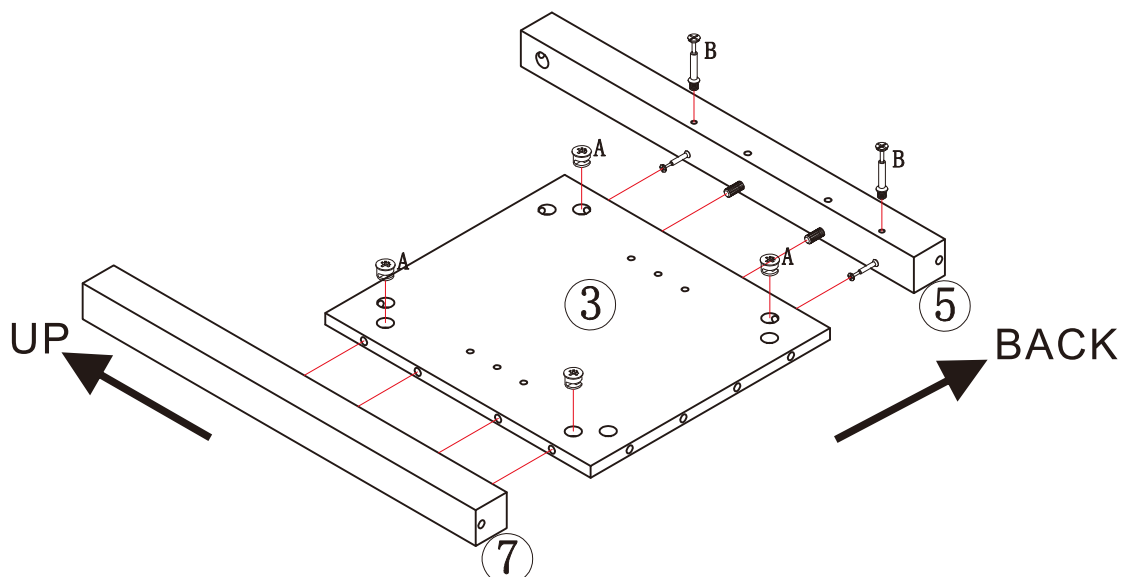
STEP#2



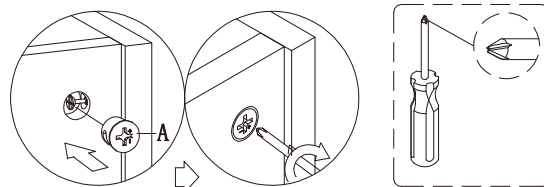
A x 4



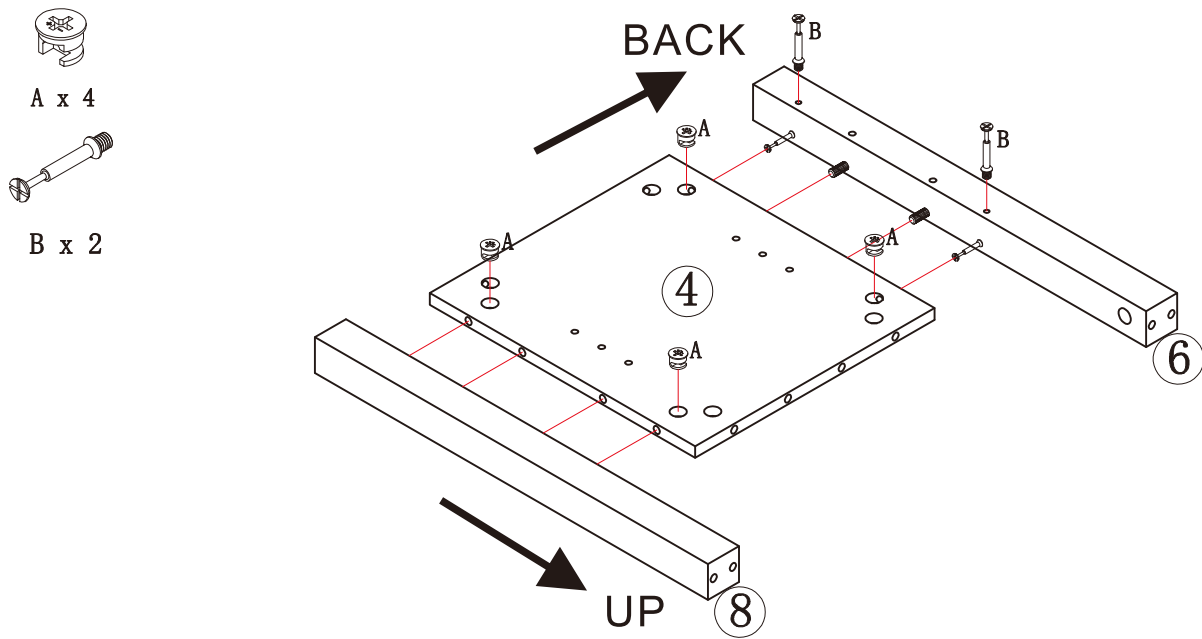
B x 2



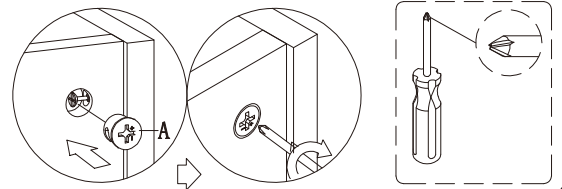
- 1, Attach parts(5) and(7) to part(3).
- 2, Attach(A) to fully assembled part(3).
- 3, Rotate(A) 160°~180° and tighten it with a screwdriver according to the following picture on the right.
- 4, Attach(B) to part(5).



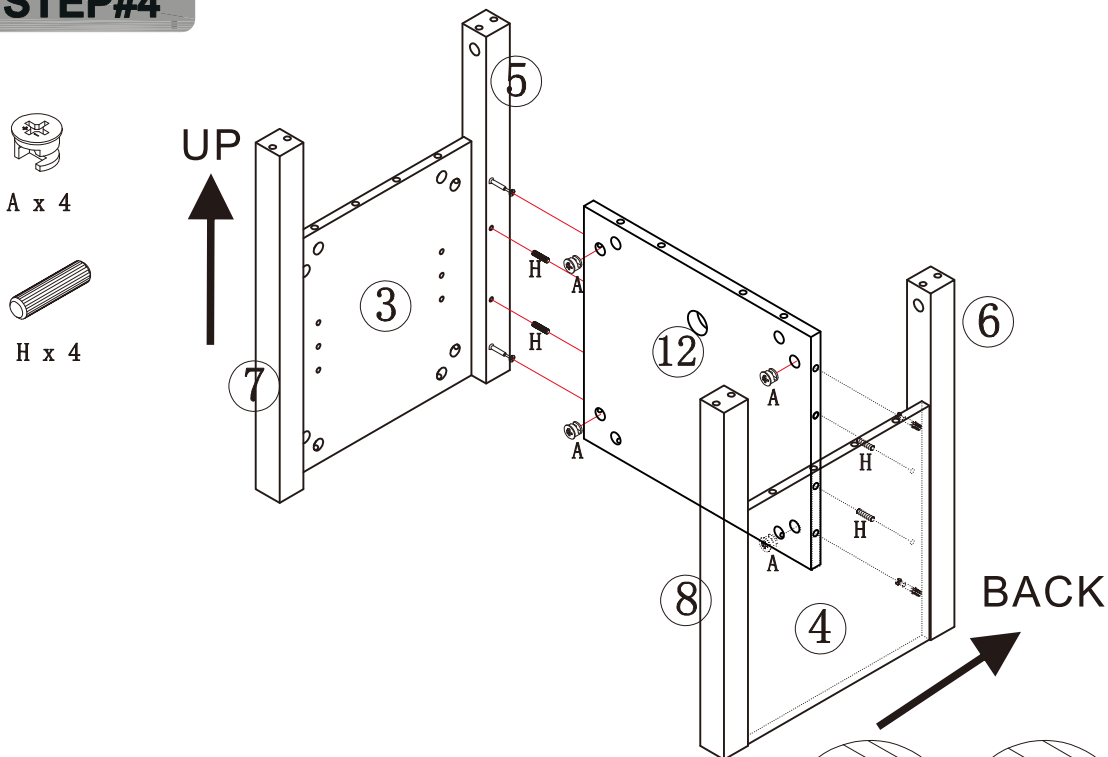
STEP#3



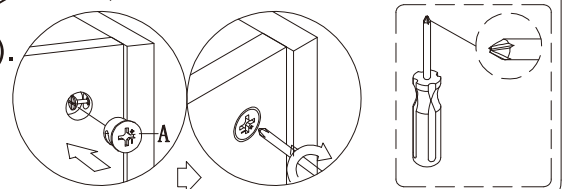
- 1, Attach parts(6) and(8) to part(4).
- 2, Attach(A) to fully assembled part(4).
- 3, Rotate(A) 160°~180° and tighten it with a screwdriver according to the following picture on the right.
- 4, Attach(B) to part(6).



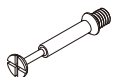
STEP#4



- 1, Attach part(12) to fully assembled parts(3) and(4).
- 2, Attach (A) to part(12)
- 3, Rotate(A) 160°~180° and tighten it with a screwdriver according to the following picture on the right.



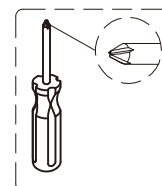
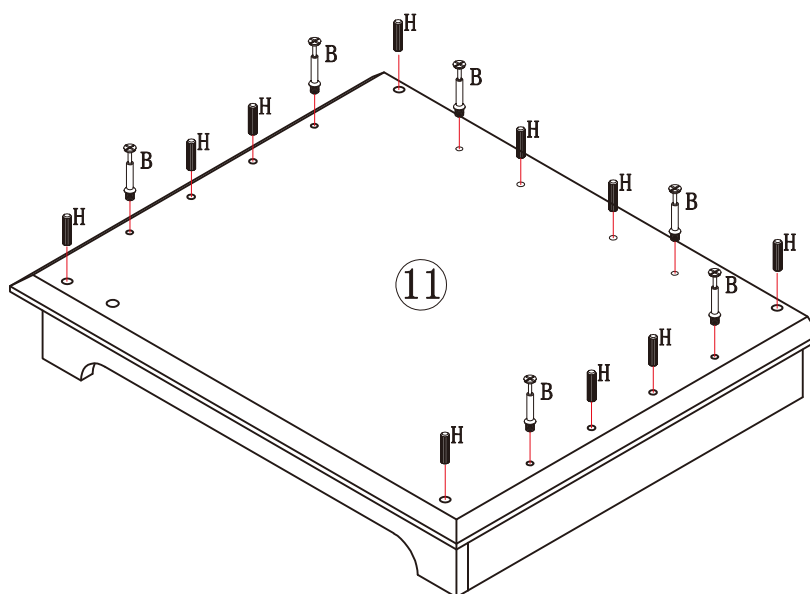
STEP#5



B x 6



H x 10

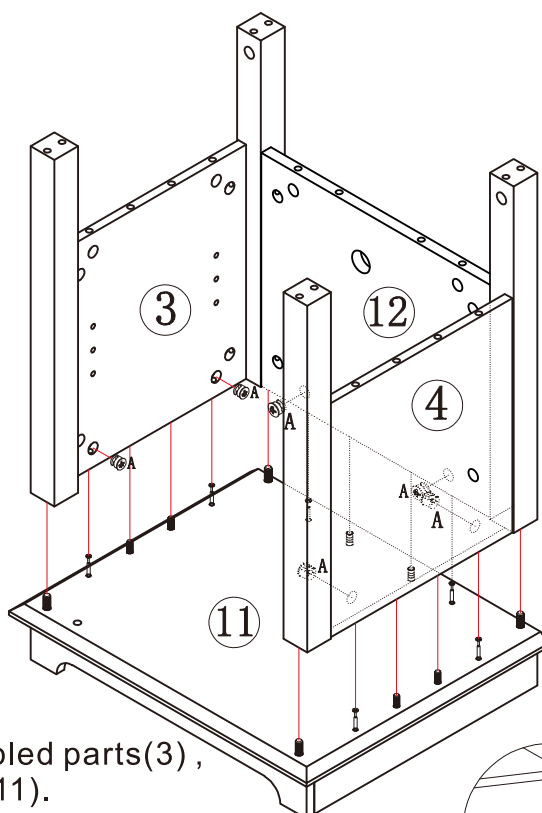


Attach (B) and(H), to parts(11).

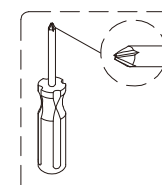
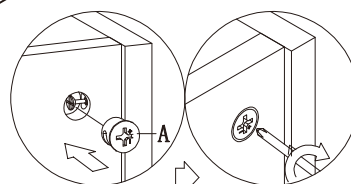
STEP#6



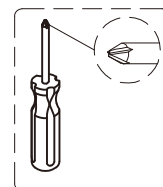
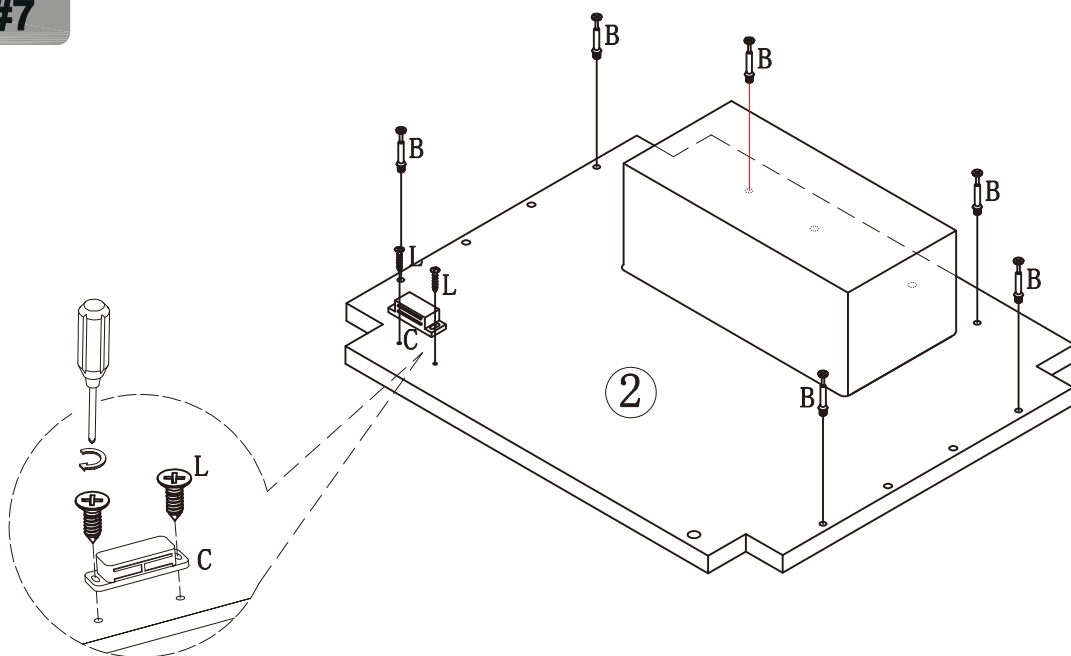
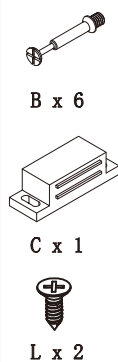
A x 6



- 1, Attach fully assembled parts(3) , (4)and(12) to part(11).
- 2, Put(A) in the position shown in the picture.
- 3, Rotate(A) 160°~180° and tighten it with a screwdriver according to the following picture on the right.

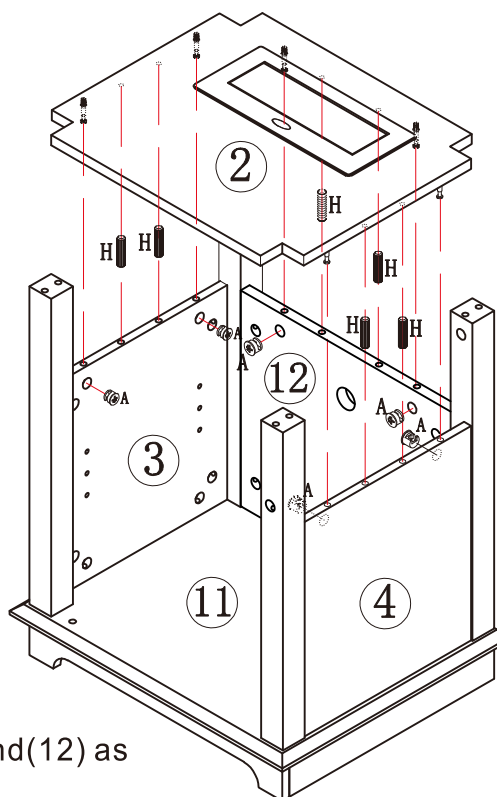


STEP#7

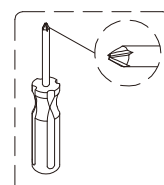
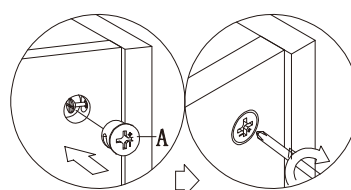


- 1, Attach (B) to part(2) as shown in the figure.
- 2, Attach (C) to designated areas by using screws (L).

STEP#8



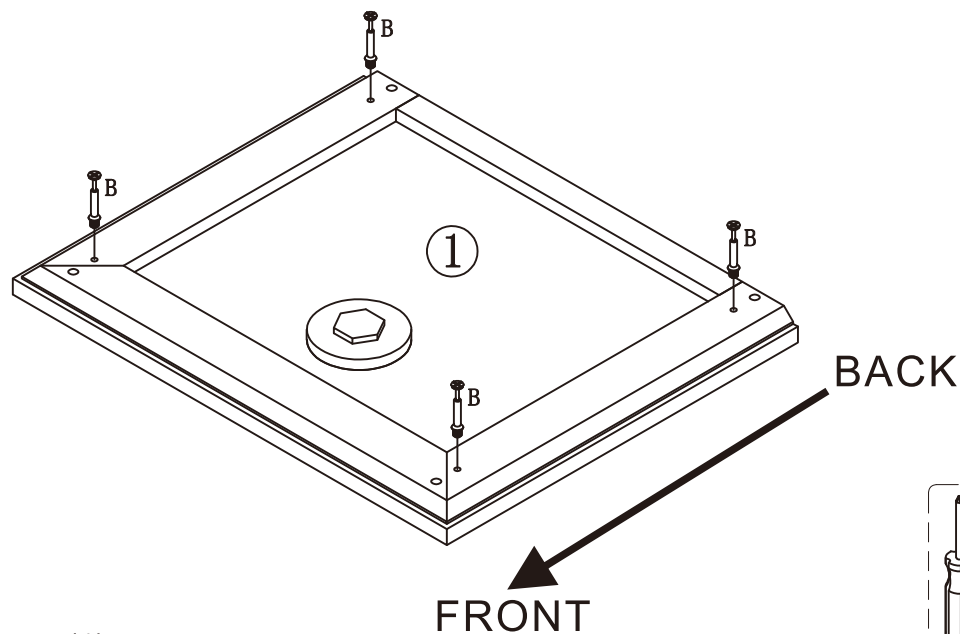
- 1, Attach (H) to part (3), (4) and (12) as shown in the figure.
- 2, Attach part (2) to part (3), (4) and (12).
- 3, Put (A) in the position shown in the picture.
- 4, Rotate (A) 160°~180° and tighten it with a screwdriver according to the following picture on the right



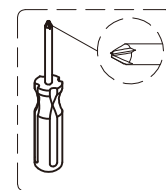
STEP#9



B x 4



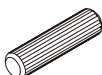
Attach (B) to part (1).



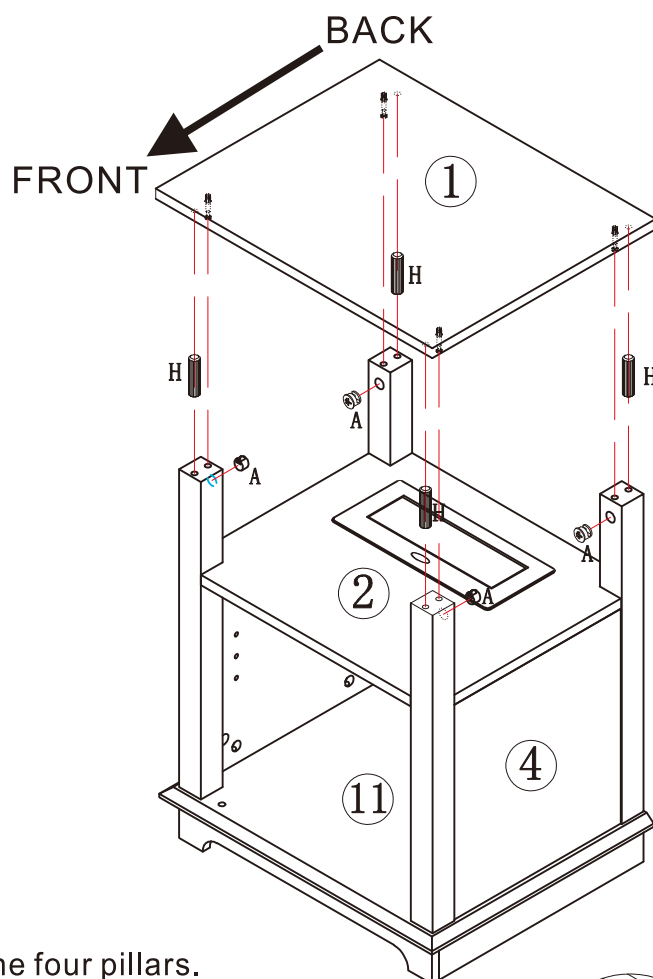
STEP#10



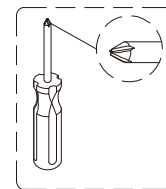
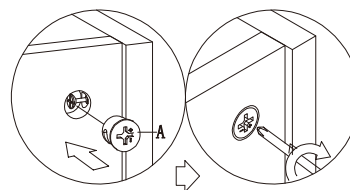
A x 4



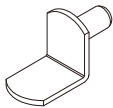
H x 4



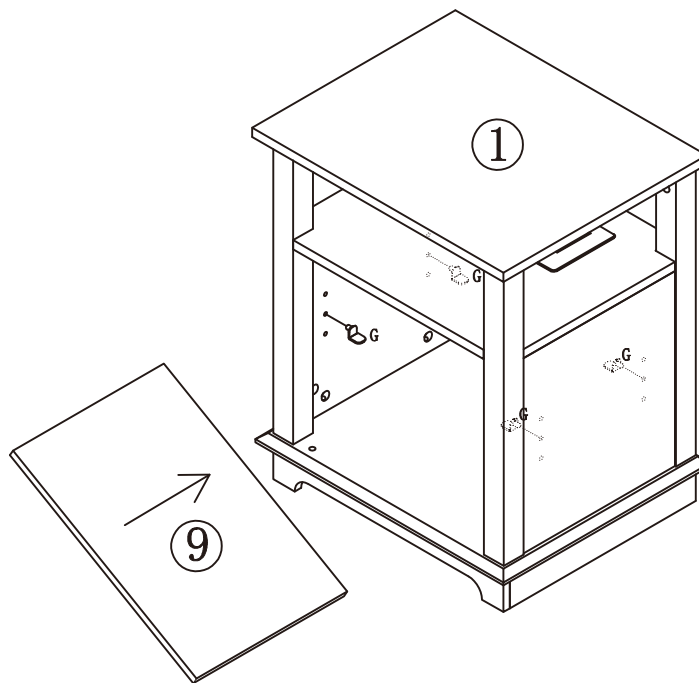
- 1, Attach (H) to the four pillars.
- 2, Attach part(1) to the four pillars.
- 3, Place (A) in the position shown.
- 4, Rotate (A) 160°~180° and tighten it with a screwdriver according to the following picture on the right.



STEP#11



G x 4



Insert shelf supports (G) and place shelves (9) as shown in the diagram.

STEP#12



C x 1



D x 2



E x 1



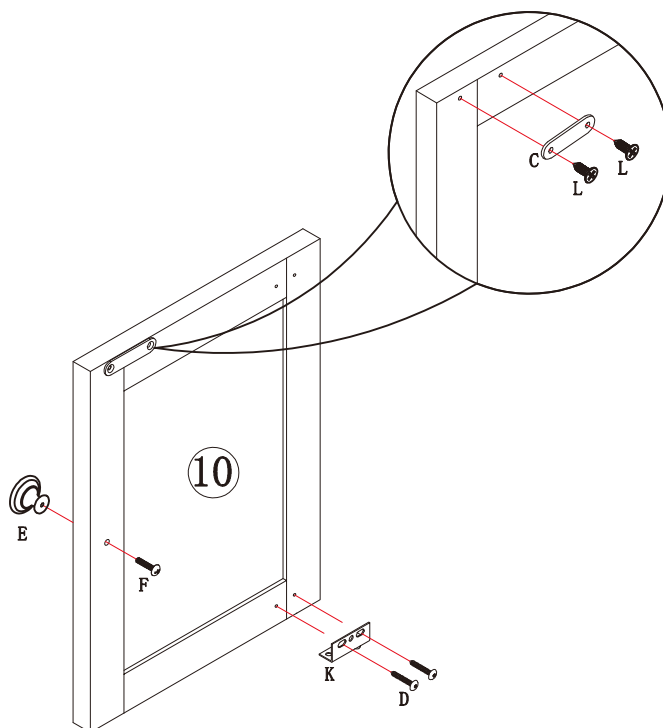
F x 1



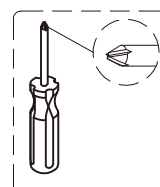
K x 1



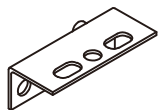
L x 2



- 1, Attach (C) to part(10) by used screw(L).
- 2, Attach (E) to part(10) by used screw(F).
- 3, Attach (K) to part(10) by used screw(D)



STEP#13



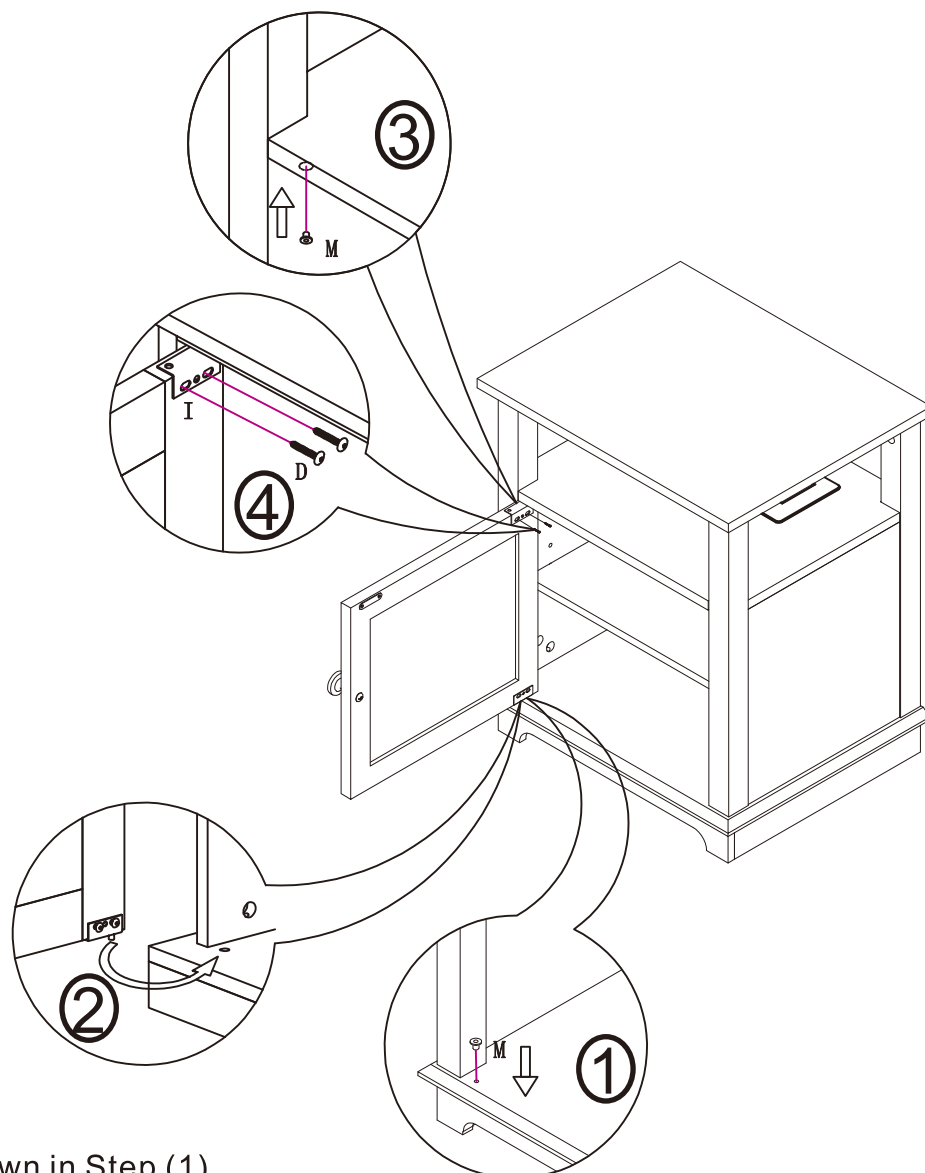
I x 1



D x 2



M x 2

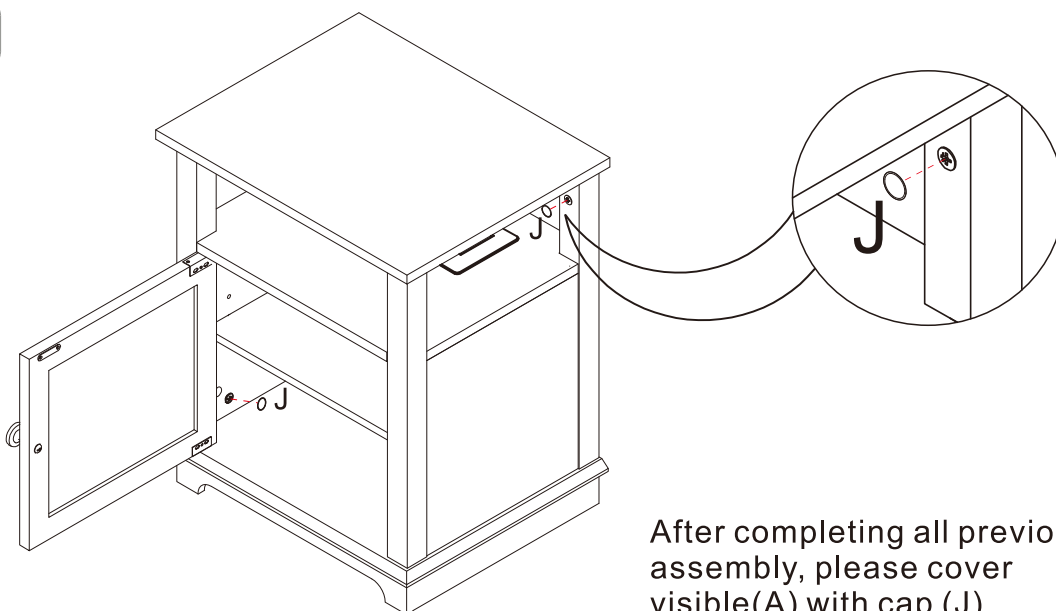


- 1, Place(M) as shown in Step (1).
- 2, Installing the door frame into(M) as shown in Step (2).
- 3, Place(M) as shown in Step (3).
- 4, As shown in step(4), insert (I) into (M) and fix (I) on the door frame with screws (D).

STEP#14



J x 24 pcs



After completing all previous assembly, please cover visible(A) with cap (J)