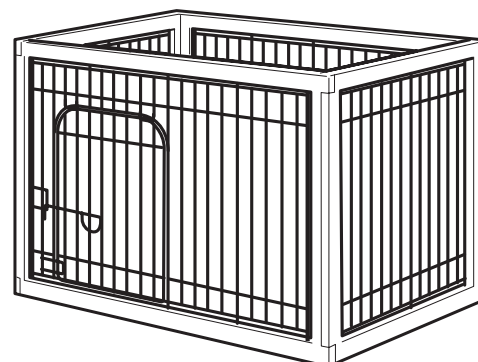


## Instruction Manual

Thank you for choosing Richell's Wood Pet Pen.  
Please read this instruction manual carefully before assembling or using this product,  
and keep for future reference.

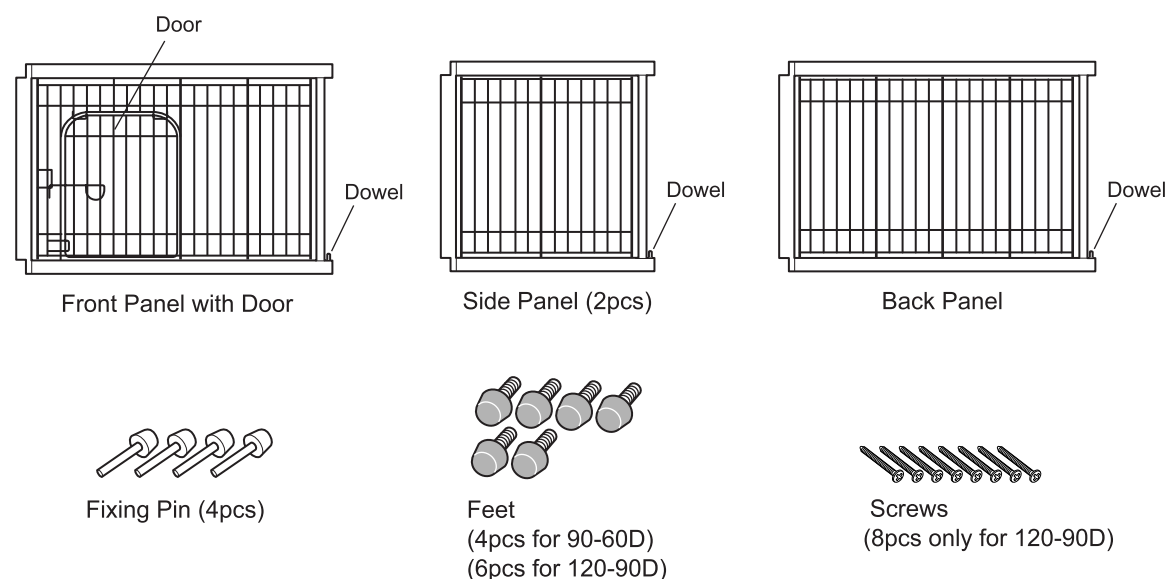
### Features

- Model 90-60D is designed for 8 - 44lbs dogs
- Model 120-90D is designed for 20 - 100lbs dogs
- Wire door for ease of placing/removing pet
- Wood-finish for classic look
- Interlocking corners reinforce frame support
- Folds up for easy transport or storage
- Feet protect floor surface



Dimension:  
90-60D: 35.4 x 24 x 23.8H"  
120-90D: 47.2 x 35.4 x 35.8H"

### Parts / Specifications

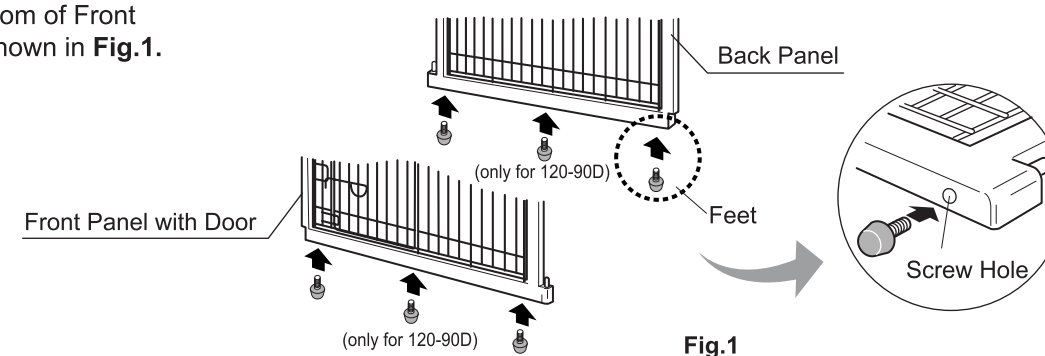


### Cautions!

This product is designed for use with pets only.  
Do not use this product for any other purpose/use other than its intended purpose.  
Keep the product away from fire or extreme high temperatures.  
The product is designed for indoor use only. Do not use it outside.  
Do not stand or sit on the product, as it may cause injury/damage to self or the product.  
Take caution not to pinch your hands or fingers when opening/closing the door.  
Use mild detergent to clean. Do not use harsh chemicals such as benzin or thinner.

### How to assemble

- 1** Attach Feet to the bottom of Front and Back Panels as shown in Fig.1.



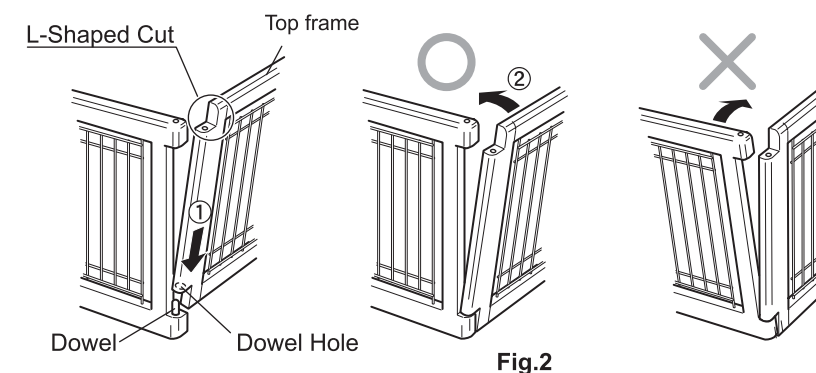
- 2**

- ① Align the corners of panels by sliding L-shaped Panel into place as shown in Fig.2.

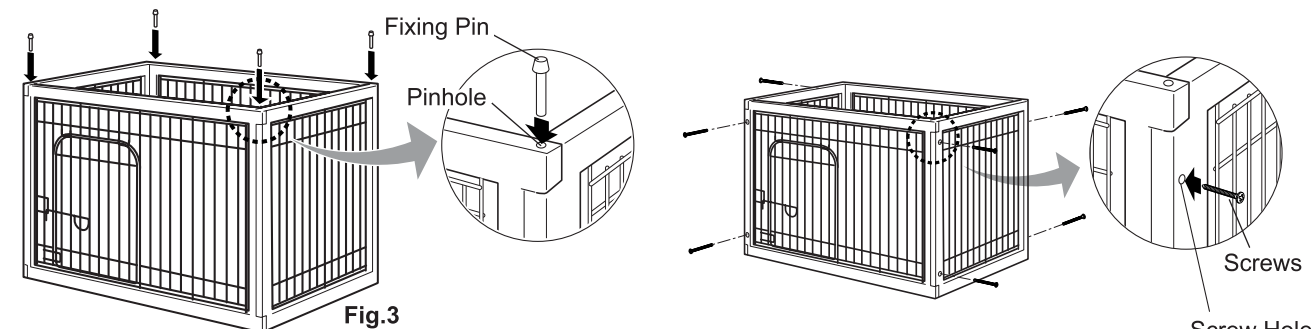
- ② Insert Dowel into Dowel Hole in L-shaped Panel to lock into place.

#### Note:

Frame top with rounded edge should face outward.



- 3** Insert Fixing Pin (4pcs) properly into Pinholes as shown in Fig.3.



#### Note:

If correctly assembled, the product should not feel loose or wobbly when tugged.

※ For 120-90D,  
secure panels with screws (8pcs)  
at the top and bottom as shown.

### How to open or close the door

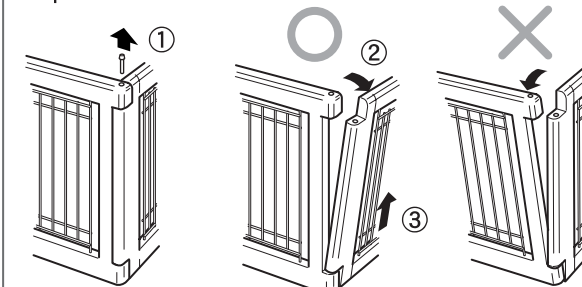
To open, pull Lock up and slide to the right as shown.



To close, slide lock to the left and lower into place as shown.

### How to disassemble

Remove Fixing Pins and gently pull L-shaped panel outward as shown.



※ For 120-90D, remove screws before disassembling.

Designed by :  
Richell Corporation, Japan

Distributed by :  
**Richell USA Inc.**  
2100 N. Hwy. 360, Suite 1700, Grand Prairie, TX 75050 USA  
Phone (972) 641-9795 Fax (972) 641-8495 [www.richellusa.com](http://www.richellusa.com)  
0609