

INSTALLATION INSTRUCTION

Fan Wall Controller

E-WC-012505

East Grove
• HOME •

CAUTION: To prevent electrical shock, ensure electricity has been turned off at the circuit breaker before beginning.

- Read all instructions before installing.
- System is intended for installation by a licensed electrician in accordance with the National Electrical Code (NEC) and local regulations.
- When handling the fixture, do not apply pressure to the LEDs. Hold the fixture by the base only.
- Retain installation instructions for future maintenance reference.

WARNING: All parts must be used as indicated in these instructions. This product is designed for use only with the supplied parts and/or accessories designated for use by EastGroveHome. Substitution of parts or accessories not designated for use with this product by EastGroveHome could result in personal injury or property damage, and will void the warranty. Contact an authorized dealer or the manufacturer if any parts are damaged or missing.

MAINTENANCE NOTE: Coastal conditions may cause mineral and residue build-up on the fixture. We recommend that customers in coastal areas clean all external surfaces of the fixture once every two weeks with a wet cloth.

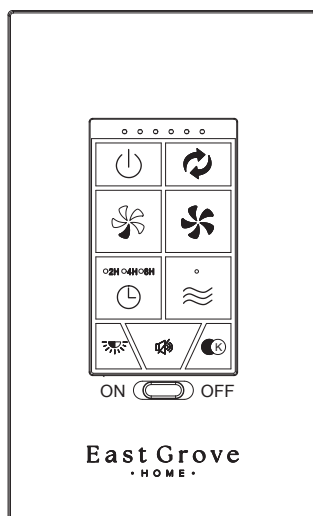
MISE EN GARDE: Pour éviter tout choc électrique, assurez-vous que le disjoncteur soit mis hors tension avant de commencer.

- Lisez toutes les instructions avant l'installation.
- Le système doit être installé par un électricien licencié conformément au code national de l'électricité (NEC), et également aux règlements locaux.
- Lors de la manipulation du luminaire, n'appuyez pas sur les LED. Tenez-le uniquement par la base.

ATTENTION: Toutes les pièces doivent être utilisées comme indiqué dans ces instructions. Ce produit est conçu pour être utilisé seulement avec les pièces et/ou accessoires fournis pour être utilisés avec les produits EastGroveHome. Remplacer des pièces ou accessoires non conçus pour ce produit EastGroveHome pourrait causer des dommages corporels ou matériels et pourrait également causer l'annulation de la garantie. Veuillez contacter un revendeur autorisé ou le fabricant si des pièces manquent ou sont endommagées.

NOTE D'ENTRETIEN: Les conditions côtières peut causer une accumulation de minéraux et de résidus sur le luminaire. Nous recommandons aux clients qui résident dans les zones côtières de nettoyer toutes les surfaces externes du luminaire une fois toutes les deux semaines avec un chiffon humide.

Fan Wall Controller



Integrates seamlessly
with Smart Life App

Available at



Wi-Fi enabled
for flexible control



Traditional control with
included wall controller

COMPATIBLE WITH



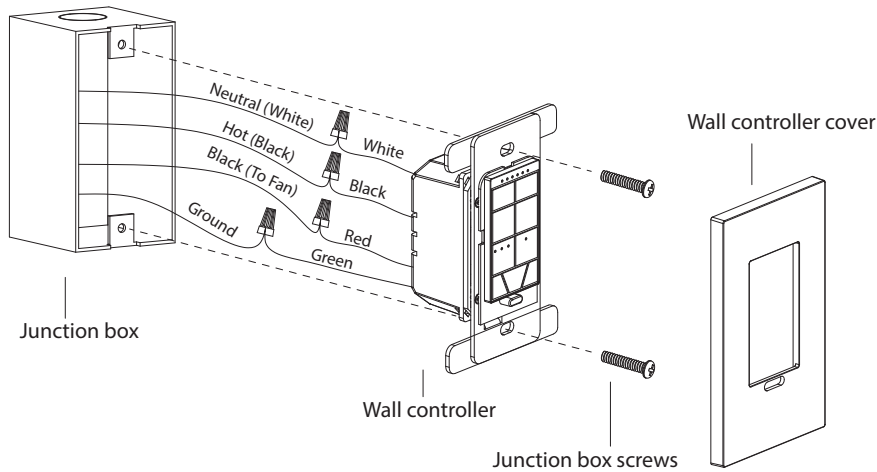
EastGroveHome.com
Phone: 888-602-0990

Corporate Headquarters
1000 N West Street, Suite 1200
Wilmington, DE 19801



*Corporate Address ONLY – Do not send returns here

Fig.1



WALL CONTROLLER TO WALL OUTLET BOX ELECTRICAL CONNECTIONS (Fig.1):

1. Connect the green ground wire marked "⊕" of the wall controller to the ground wire of the junction box.
2. Connect the white wire marked "AC in N" of the wall controller to the white (neutral) wire from the junction box.
3. Connect the black wire marked "AC in L" of the wall controller to the black (hot) wire from the junction box.
4. Connect the red wire marked "To Fan in L" of the wall controller to the black wire from the junction box that feeds up to the fan hot wires.
5. Note that if multiple fans are connected, the total power of the fans should not exceed 200W.

MOUNTING THE WALL CONTROLLER(Fig. 1)

1. Carefully tuck the wire connections inside the junction box. Secure the wall controller with the junction box screws provided.
2. Align the wall controller cover with the wall controller and press it down to ensure it is pressed in place.

WALL CONTROLLER PAIRING OPERATION (Fig.2)

1. Press and hold OFF button within 5 seconds after power is turned on. The fan will beep once after it successfully pairs with wall controller.
2. Fig 2 for wall controller functions.

Pairing East Grove Home ceiling fan with mobile device using the Smart Life App

For the pairing method, please refer to the APP instruction manual of the East Grove Home ceiling fan.

