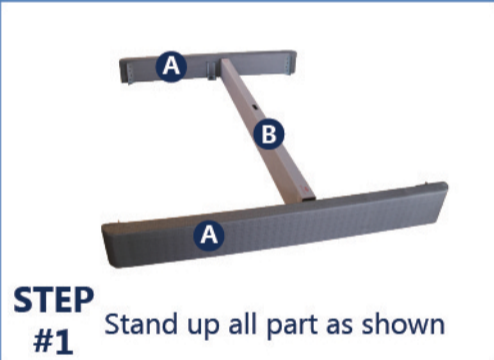
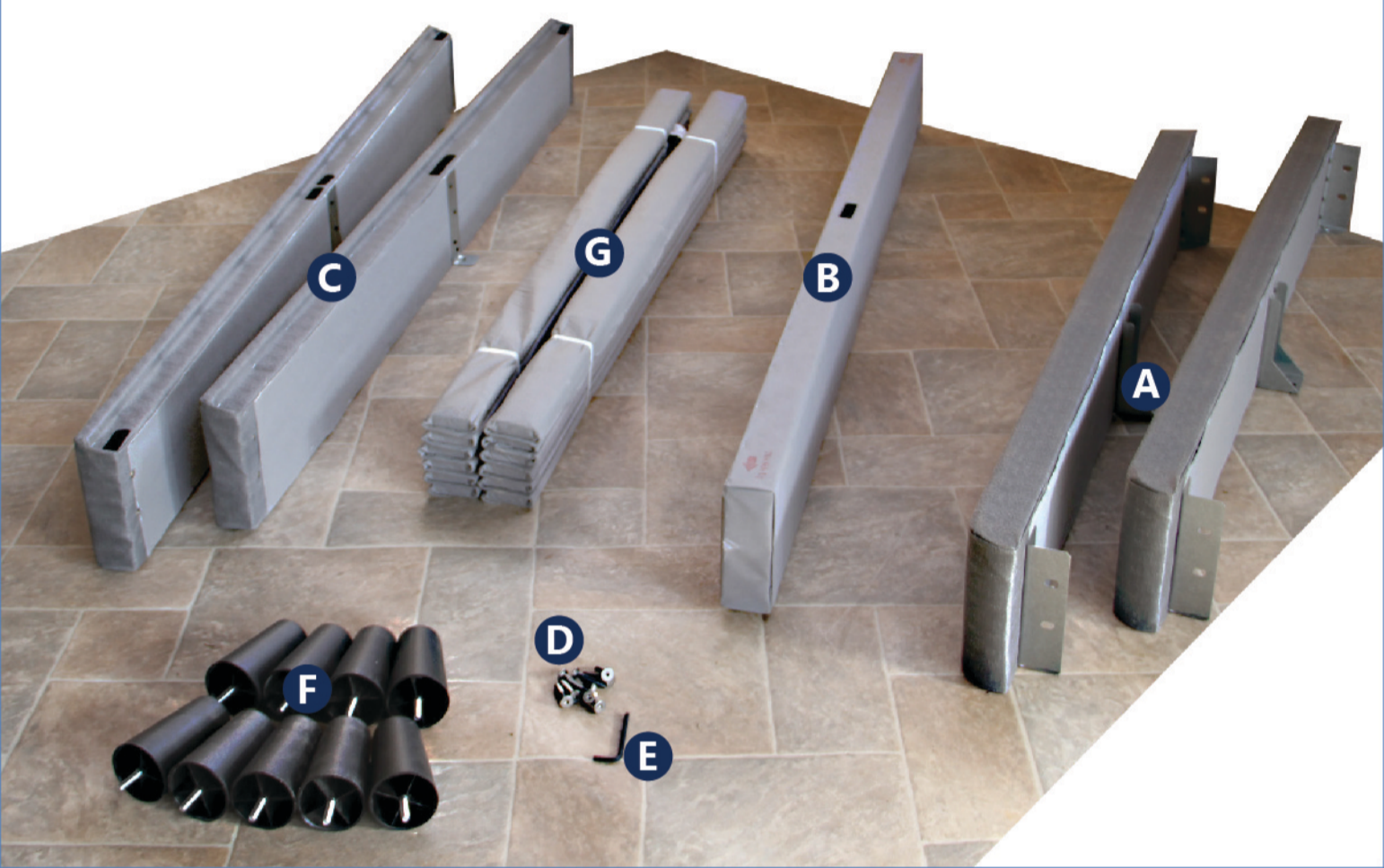


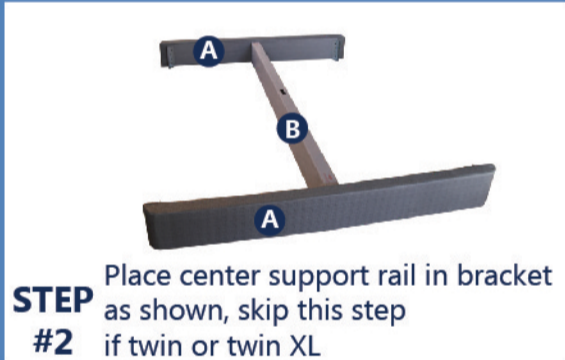


Kit Includes

- A** 2 - Head Foot Rail
- B** 1 - Center Support Rail
(Twin & TWin XL, rno center rail)
- C** 2 - Side Rails
- D** Hex Screws
- E** 1 - Hex Wrench
- F** Screw Legs
(Leg quantity will vary on size of bed)
- G** Bed Slats



STEP #1 Stand up all part as shown



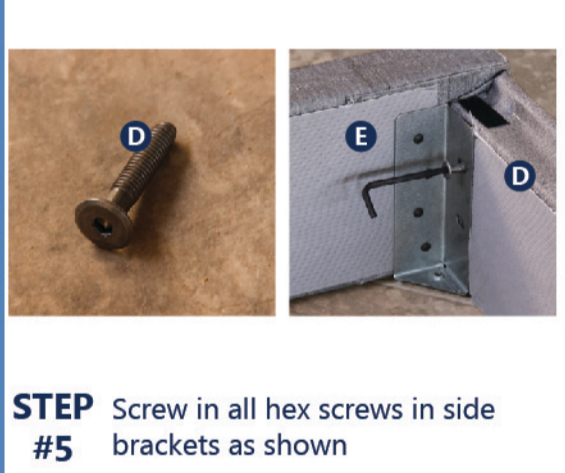
STEP #2 Place center support rail in bracket as shown, skip this step if twin or twin XL



STEP #3 Stand up side rails



STEP #4 Place side rails in tight against brackets



STEP #5 Screw in all hex screws in side brackets as shown



STEP #6 Flip over frame so bottom is on top



STEP #7 Locate all screw holes for legs



STEP #8 Screw in all supplied legs, Screw in all the way until hand tight



STEP #9 Your frame should have all legs in stalled & look like this



STEP #10 Flip over frame



STEP #11 Lay both bed slats on frame



STEP #12 Open bed slats on frame



STEP #13 Make sure velcro is joined together



STEP #14 You are Done! Enjoy!