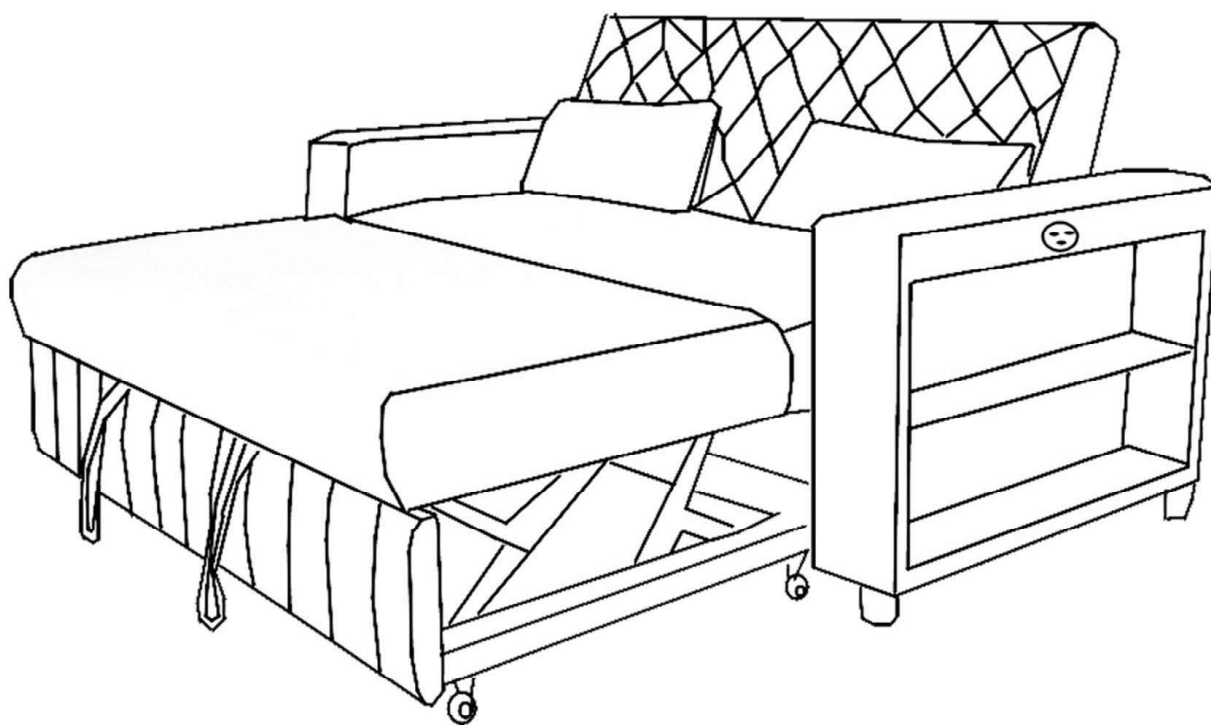










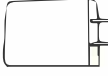




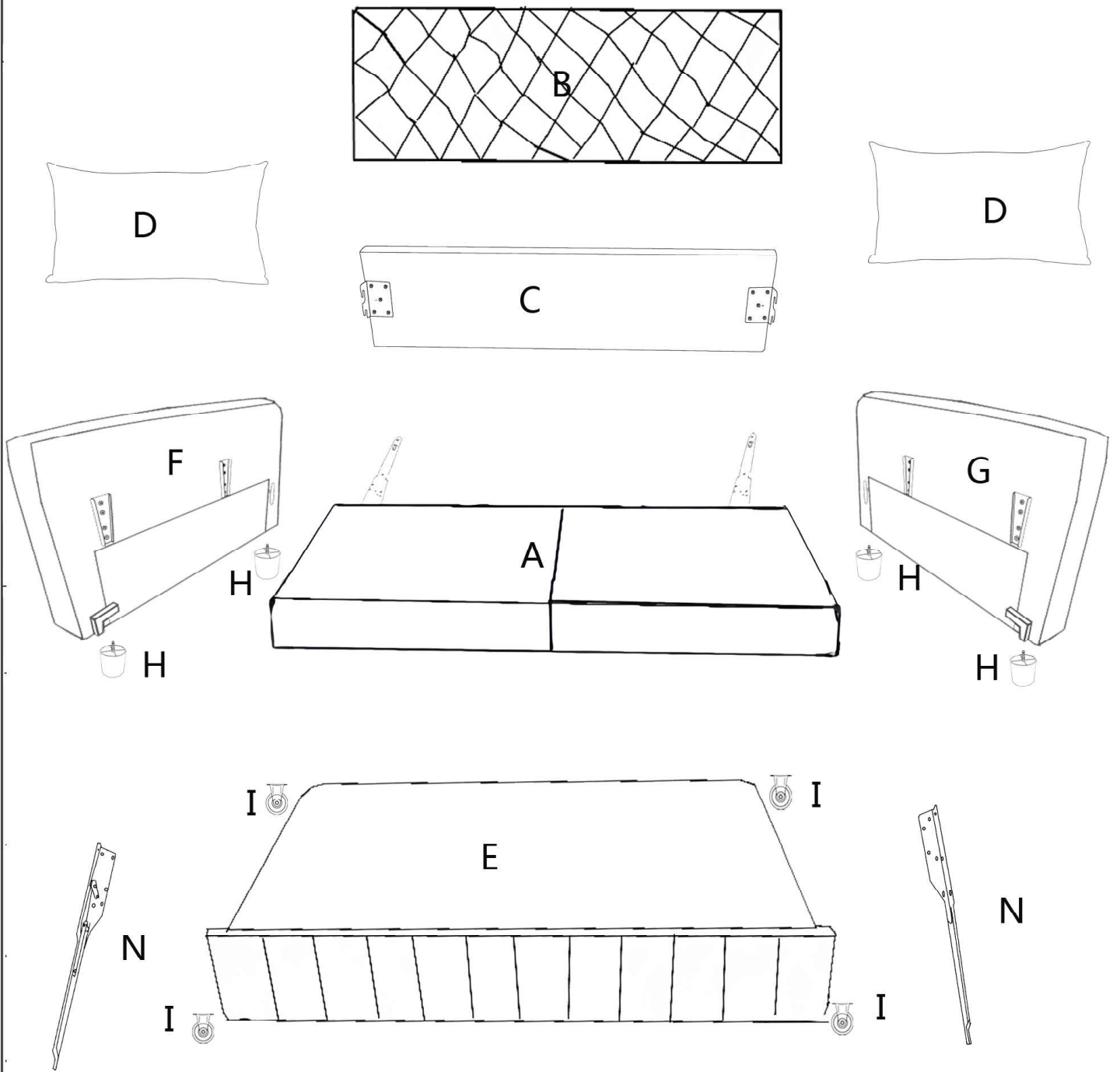


Assembly Instruction

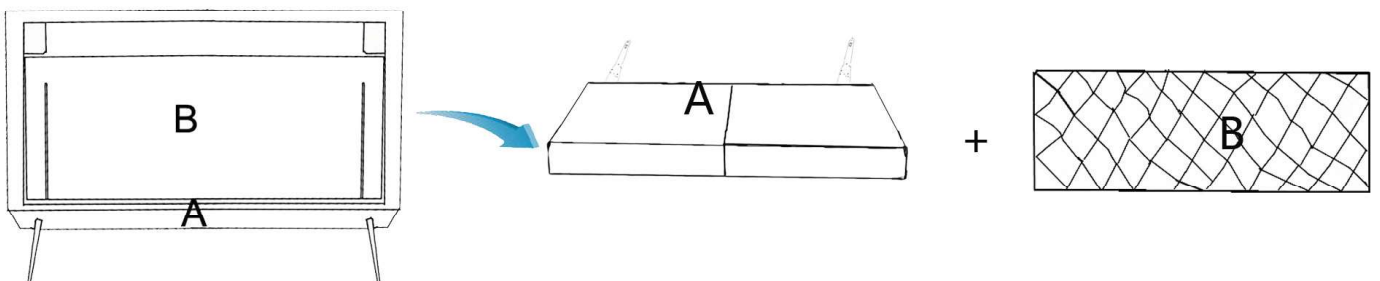


PARTS LIST

BOX I	A		Seat Cushion	1 PC	I		Guide-Rail Wheel	4 PCS
	B		Back Cushion	1 PC	J		Screw	16 PCS
	C		Back Board	1 PC	S		Screw	10 PCS
	D		Pillow	2 PCS	K		Allen Key	1 PC
	H		Plastic Leg	4 PCS	L		Screw	4 PCS
	M		Power Plug	1 PC				
BOX2					E		Trundle Bed	1 PC
					G		Back Board	1 PC
					N		Metal Hinge	1 set
BOX3					F		Left Armrest	1 PC

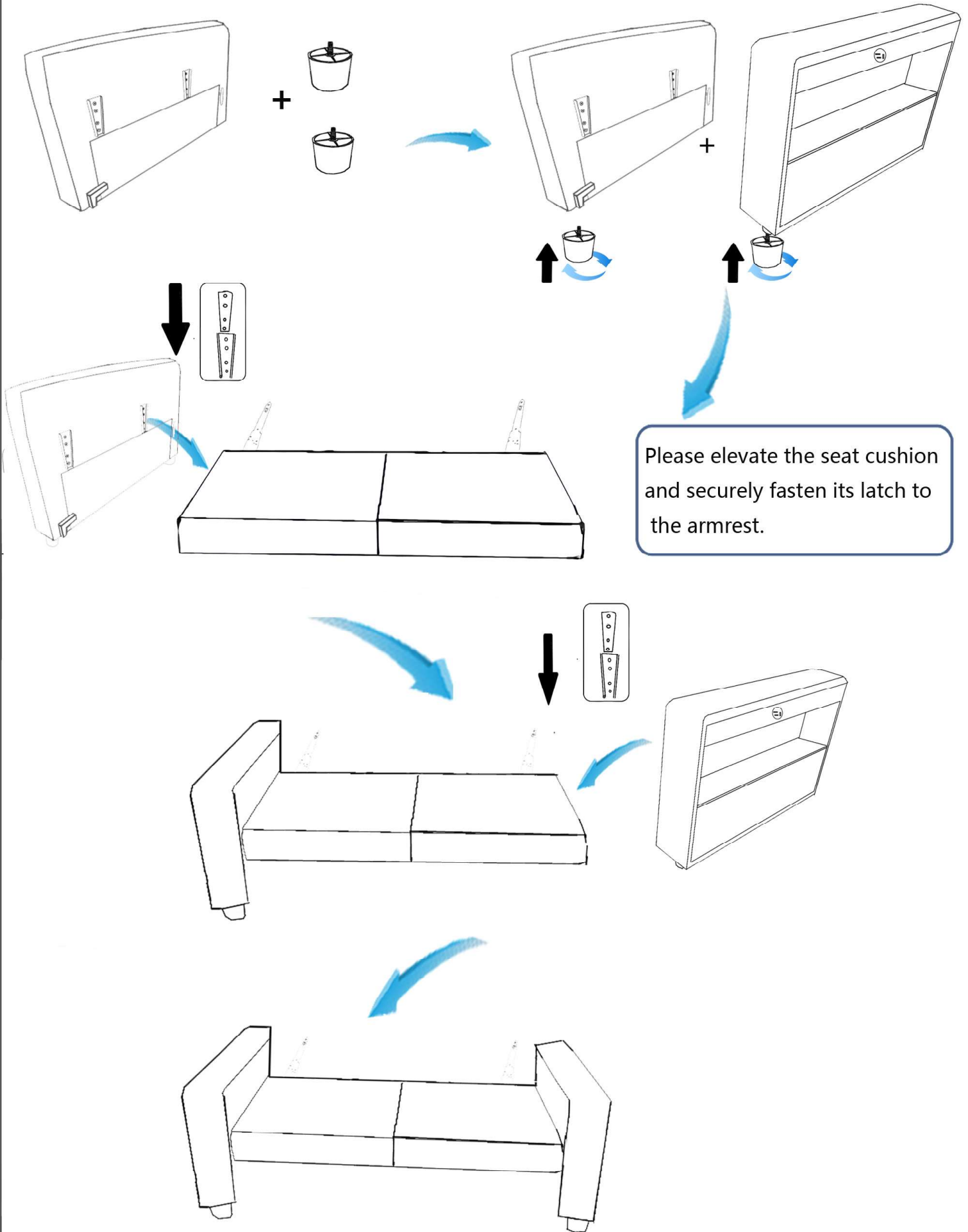


Step: 1 Take out the backrest B from the wooden frame of the seat cushion A.



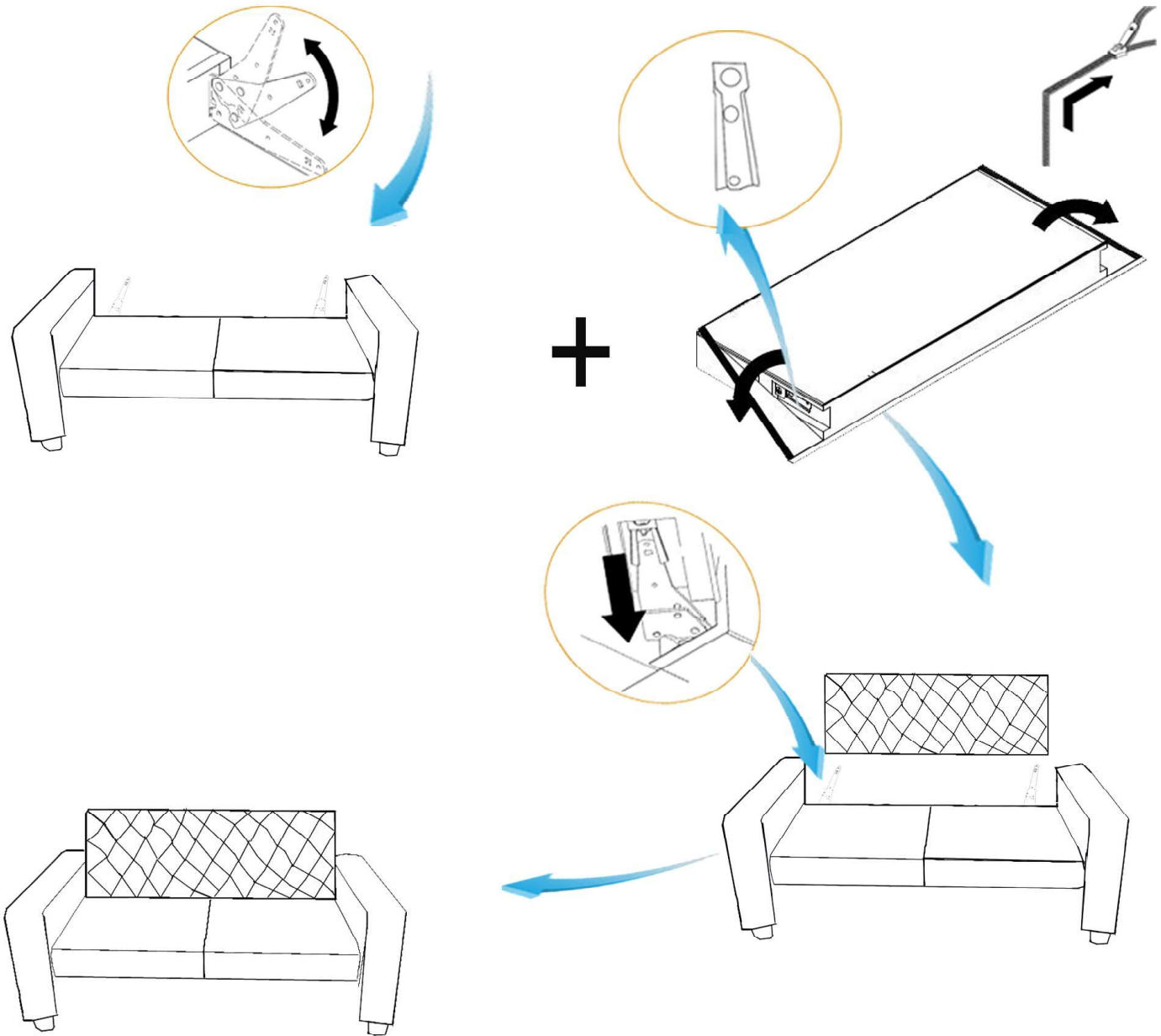
Step 2 :

Connect the armrests to the seat cushion latch after the 4 plastic legs are installed under the armrests

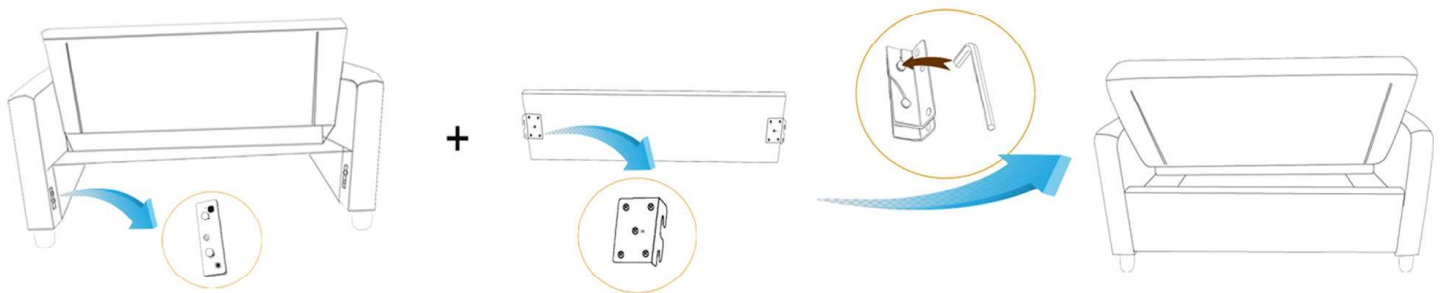


Step 3:

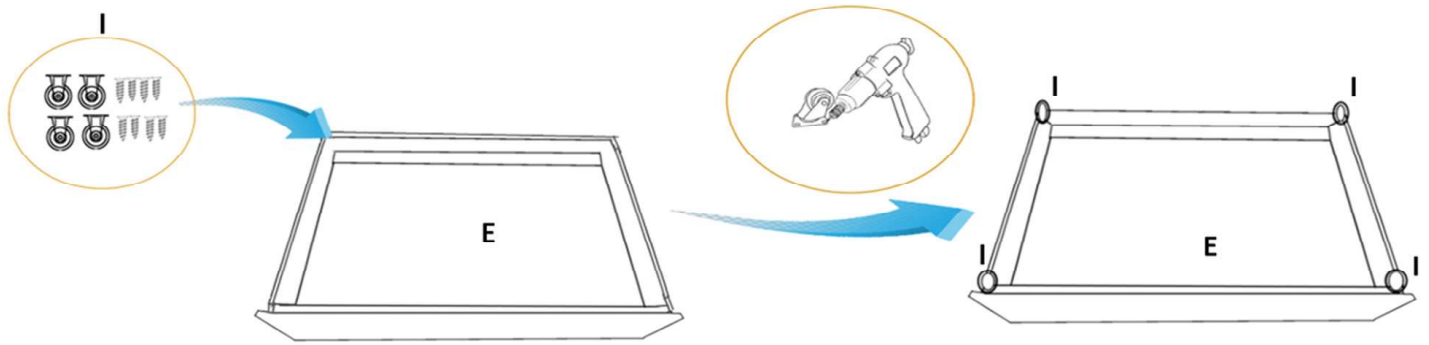
Attach the seat cushion to the back cushion.



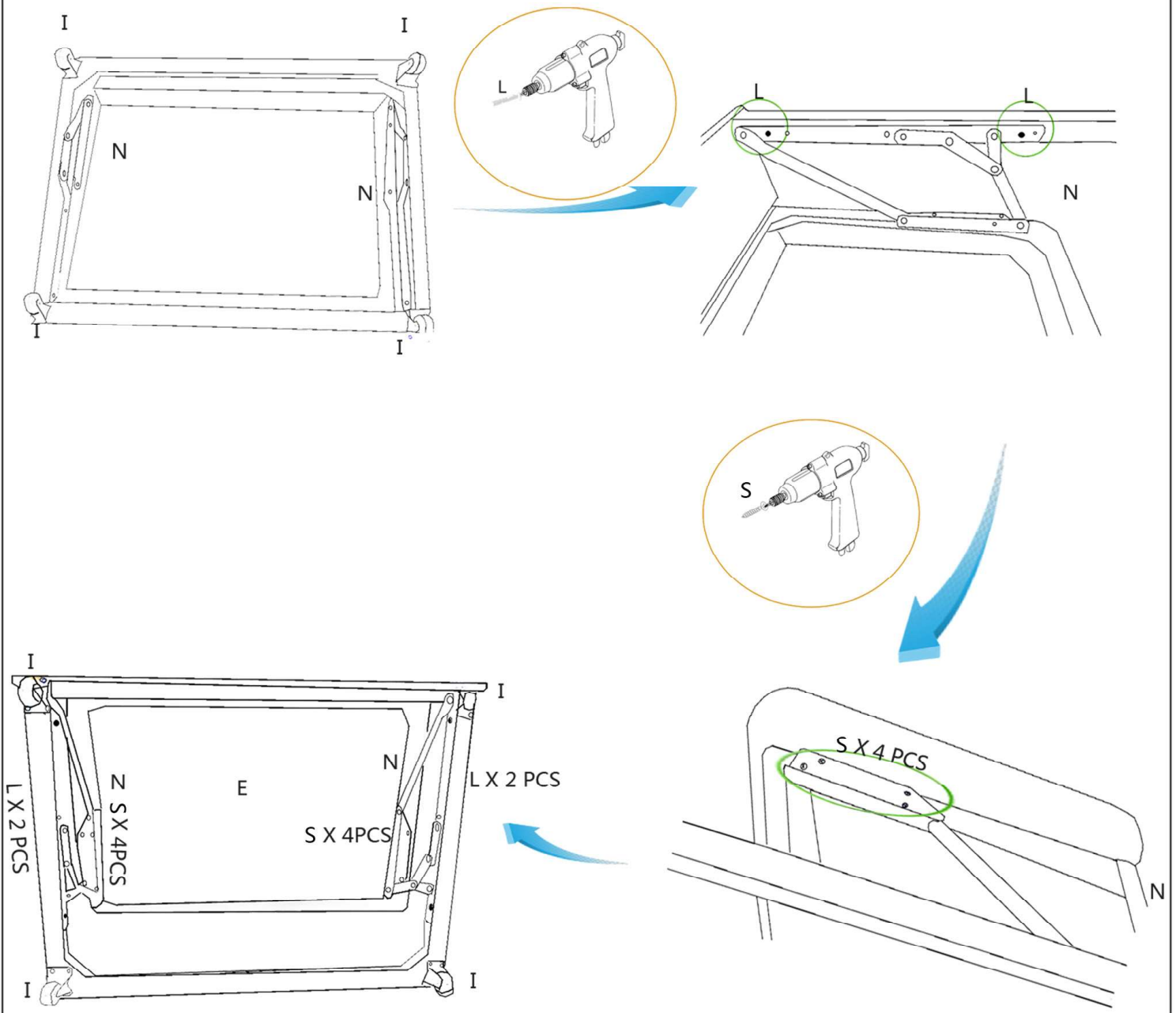
Step 4: Use a wrench to fix the back board to the rear nut of the armrests.



Step 5: Install 4 wheels on bottom of trundle bed, please use tools to set screws.



Step 6: Inspect the screw holes on the original wooden frame, align the holes in the metal sheets, and secure the screws using an appropriate tool.



Step 7: Place the trundle bed under the seat cushion, please meticulously avoid the positioning.

