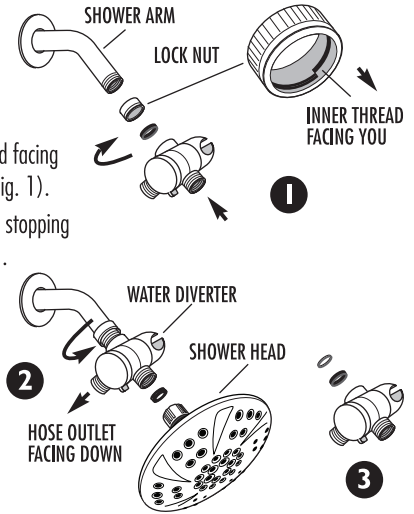


AquaDance[®]

Premium Combination Shower

1. Remove old shower head. Screw Lock Nut, with single Inner Thread facing YOU, onto shower arm to end of its thread, but DO NOT tighten (Fig. 1).
2. Screw Water Diverter with Thick Washer in place onto Shower Arm stopping at last possible position when Hose Outlet is facing DOWN (Fig. 2).
3. Counter-tighten Lock Nut in reverse direction, until it presses tightly against Diverter, thereby locking it in this position.
4. Screw Shower Head with its Washer in place onto Front Outlet (Fig. 2).
5. Turn ON water to test connection. If leakage occurs, disconnect Diverter and add Thin Washer (spare) to Thick Washer already inside its neck (Fig. 3), then reconnect and test again.



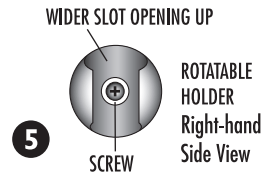
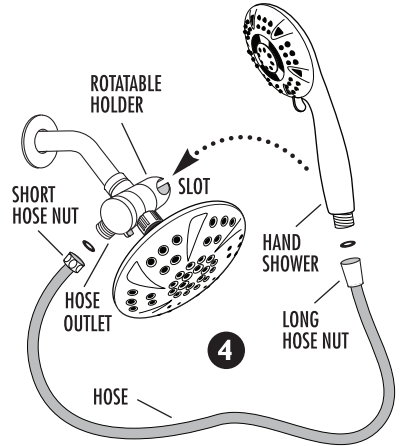
If Leakage Occurs Due to Short Shower Arm Threads, DO NOT Use Lock Nut

To stop leakage, your Shower Arm end must always reach Washer inside Diverter and press against it. If your Shower Arm with Lock Nut on it does not have enough threads to reach Thick Washer inside Diverter, remove Lock Nut and DO NOT use it. Add Thin Washer to Thick Washer, if needed, for better alignment (Thin Washer compensates for about 1/2 thread turn).

6. Screw Short Hose Nut with Hose Washer in place onto Hose Outlet (Fig. 4). Screw Long Hose Nut with Hose Washer in place onto Hand Shower handle and place Hand Shower into Rotatable Holder.

If Hand Shower does not fit well into Holder Slot, check to make sure that wider side of Holder's Slot opening is on TOP (Fig. 5). If Holder is upside down, rotate it 180° into correct position. If it is too tight to rotate, loosen the Philips screw on the inner Slot wall, then rotate Holder into correct position and re-tighten screw.

If Hand Shower does not stay UP and falls down because Holder rotates freely, tighten the Philips screw on the inner Slot wall. If it does not tighten any further, call Customer Care to get free replacement sent to you within 24 hours.



IMPORTANT: Hand tighten connections ONLY. DO NOT use wrench or pliers.

DO NOT over-tighten - this may cause washer to bend and be pushed into shower arm. Use plumber's tape ONLY if needed on shower arm thread if washers fail to stop leakage. DO NOT use plumber's tape on any other connections.

NOTE: If your shower arm has a ball on the end instead of a thread, this old type of shower arm will not work with this and most other showers on the market today. Your existing shower arm can be easily replaced with a standard 1/2" thread shower arm available at most plumbing supply stores.