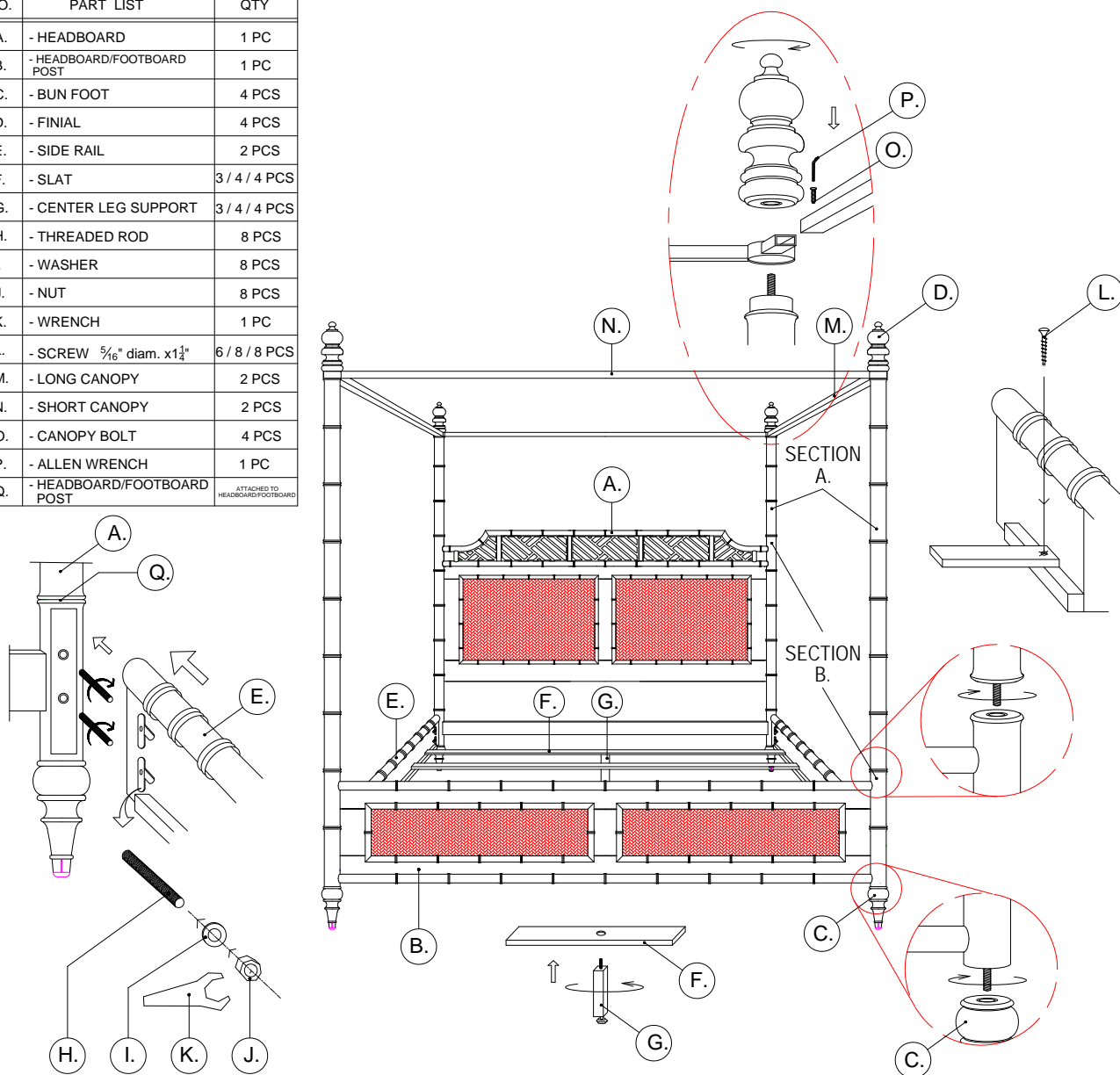


LEXINGTON HOME BRANDS ASSEMBLY INSTRUCTIONS

531-163/164/165 West Indies Queen/King/California King Bed

NO.	PART LIST	QTY
A.	- HEADBOARD	1 PC
B.	- HEADBOARD/FOOTBOARD POST	1 PC
C.	- BUN FOOT	4 PCS
D.	- FINIAL	4 PCS
E.	- SIDE RAIL	2 PCS
F.	- SLAT	3 / 4 / 4 PCS
G.	- CENTER LEG SUPPORT	3 / 4 / 4 PCS
H.	- THREADED ROD	8 PCS
I.	- WASHER	8 PCS
J.	- NUT	8 PCS
K.	- WRENCH	1 PC
L.	- SCREW $\frac{5}{16}$ " diam. x $1\frac{1}{2}$ "	6 / 8 / 8 PCS
M.	- LONG CANOPY	2 PCS
N.	- SHORT CANOPY	2 PCS
O.	- CANOPY BOLT	4 PCS
P.	- ALLEN WRENCH	1 PC
Q.	- HEADBOARD/FOOTBOARD POST	ATTACHED TO HEADBOARD/FOOTBOARD



For additional consumer assistance please contact your Lexington dealer or call our Consumer Services Department at 1-336-474-5300, Monday-Friday, 8-5 Eastern

ASSEMBLY INSTRUCTIONS

531-163/164/165 WEST INDIES Queen/King/California King Bed

Page 2

HOW TO ATTACH BUN FEET TO HEADBOARD/FOOTBOARD POSTS:

Lay headboard (A) down on non-marring surface. Insert foot (C) into bottom of headboard post (Q) and twist foot clockwise until tight. Repeat for other headboard post and for footboard (B) posts.

HOW TO ATTACH SIDE RAILS TO HEADBOARD/FOOTBOARD:

* All needed hardware is located in a hardware bag which should be taped to inside of side rail.

1. Insert Threaded Rod (H) into metal insert on post (M) thru open hole. Twist clockwise until tight.
 2. With both threaded rods in place on one post, and Side Rail (E) positioned with T-slots to inside, slide side rail into position over threaded rods.
 3. Add Washer (I) to threaded rod.
 4. Add Nut (J) with barrel end towards washer.
 5. Tighten nut with Wrench (K) until tight. Repeat process for other three corners.
-

HOW TO ATTACH SLATS TO SIDE RAILS:

1. Insert bolted end of Center Leg Support (G) into bottom end of Slat (F). Rotate clockwise until tight. (Twin, Full, and Queen beds have three slats. King and California King beds have four slats).
 2. Adjust bottom leveler so that center leg support and leveler sit ½" above floor.
 3. For Twin, Full, and Queen beds, place one slat in middle of side rail. Place other two slats 3" to 5" inward from each end of wood cleats. For King and California King beds, place one slat 3" to 5" inward from each end of wood cleats. Place other two slats between two end slats so that there is an equal amount of space between all four slats.
 4. Secure slats with wood screws (L) provided. Note that top side of slat has larger hole.
 5. Insert bolted end of Finial (D) into hole on top of post. Twist clockwise until tight. Repeat for other (3) finials/posts.
-

HOW TO ASSEMBLE POSTS TO HEADBOARD/FOOTBOARD:

Screw head post "Section A" into head post "Section B" until tight. Repeat for other head post. Screw foot post "Section A" into foot post "Section B" until tight. Repeat for other foot post. ****For low-post headboard version, remove finial from head post "Section A". Remove head post "Section A" from head post "Section B". Screw finial back into head post "Section B".*

HOW TO ASSEMBLE CANOPY:

Remove finials from top of posts. Lay short canopy rail (N) on top of head and foot posts so that ring is on top of posts. Place other short canopy rail on other head and foot posts. Insert each end of long canopy rail (M) onto square protrusions of short canopy rail. It may be necessary to lift the end of the short canopy rail off the top of the post. Repeat this for the other long canopy rail. Insert canopy bolt (O) through top of assembled canopy rails. Tighten with Allen Wrench (P). Install finials back onto top of posts and turn until tight.