

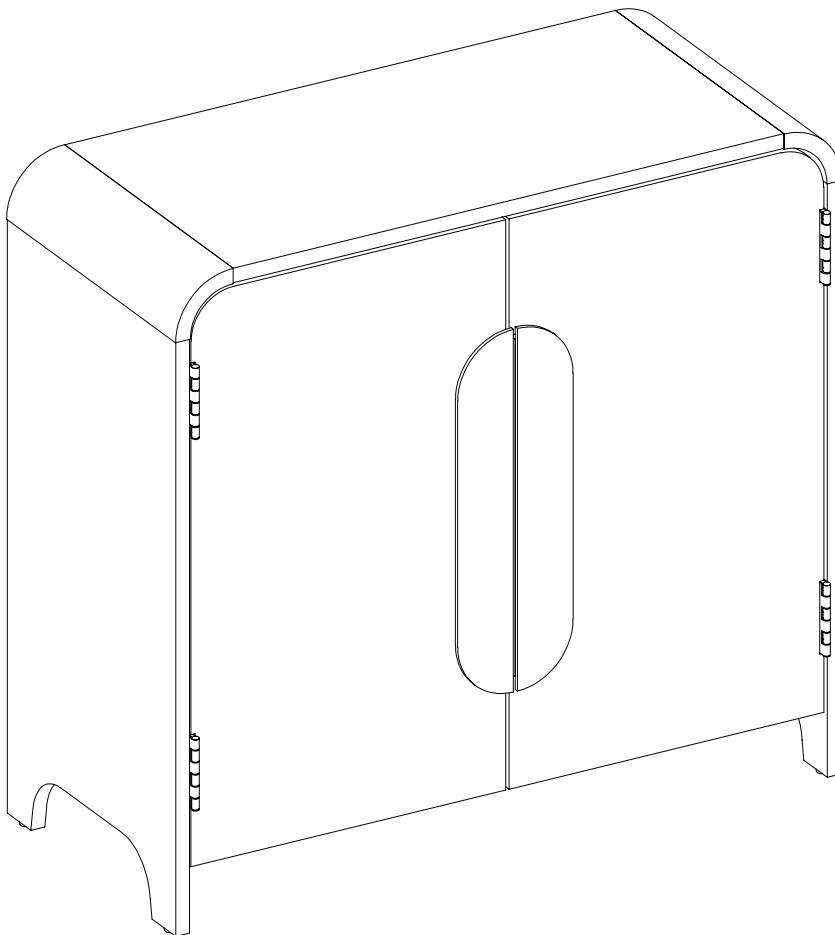
WALKER EDISON

®

Accent Cabinet

SKU# WECHA31324CO1

SKU# WECHA31324BL1



For Residential Use Only

Please visit our website for the most current instructions, assembly tips, report damage, or request parts. www.walkerredison.com



Time to get started

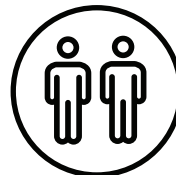
Set up a clean and soft workplace to get started and avoid damage during the assembly. It also helps to double-check you've got all the pieces and parts before diving in to assembly.

Estimated time for assembly



People recommended for assembly

Make it a team effort! Grab a friend for quicker, easier assembly.



2 People Build

Tools Needed

Grab a Phillips head screwdriver to conquer this assembly.
Phillips head screwdriver is not included.



Use power tools with caution

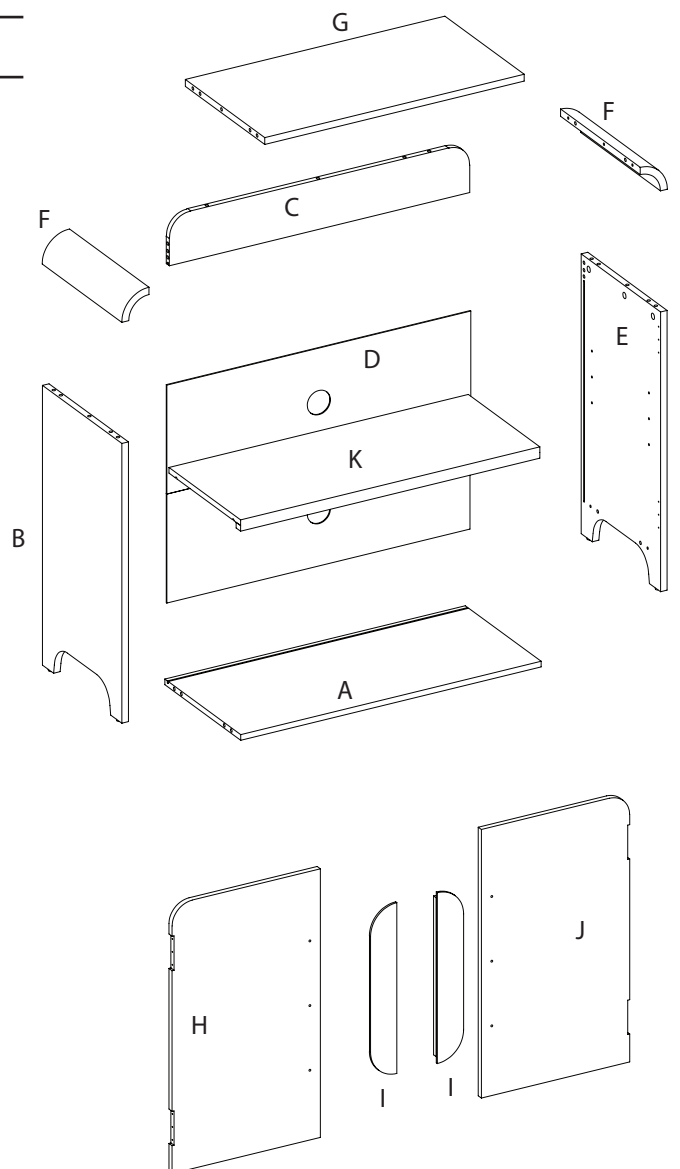
You can cause cracking or damage to the material and easily strip the hardware. If you choose to use a power tool, your product will no longer be covered under Walker Edison's warranty.




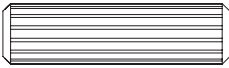
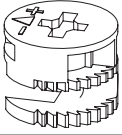
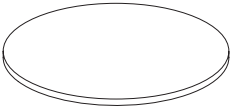
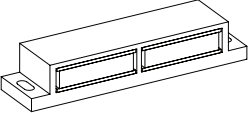
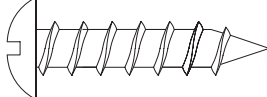

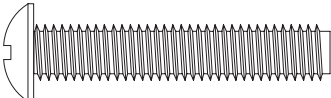
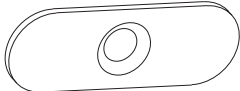
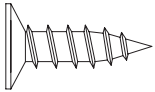
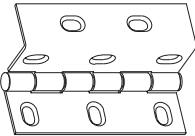
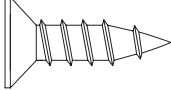
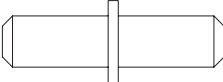
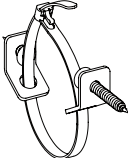
Scan to get assembly tips and help!

WE Parts List

Part Number	Description	Quantity
A	Bottom Panel	1
B	Left Side Panel	1
C	Back upper rail	1
D	Back Panel	1
E	Right Side Panel	1
F	Corner Panel	2
G	Top Panel	1
H	Left Door	1
I	Handle	2
J	Right Door	1
K	Adjustable Shelf	1




WE Hardware List

	Part	Size	Name	Quantity	Part code
AA		Ø6x34mm	Cam Bolt	23	PC-KDBZNCH34
BB		Ø8x30mm	Wood Dowels	16	PH-DWLNTL001
CC			Cam Lock	23	PC-KDCZNCH11
DD		Ø30mm	Cover	12	PC-KDPXXX011
EE			Magnetic Catch	1	PC-MCHBRNL70
FF		Ø3.5x15mm	Screw	2	PH-SCRBLK015
GG			Back Panel Bracket	10	PH-BKTBLK017
HH		Ø4X21mm	Bolt	6	PC-BOTTBD4L21
II			Metal Plate	2	PC-PLTZNCL35
JJ		Ø3x12mm	Screw	2	PH-SCRBLK004
KK			Barrel Hinge	4	PC-HNGNDQB103
LL		Ø3.5x12mm	Screw	32	PH-SCRBLK017
MM		Ø5x13mm	Shelf pin	4	PC-SPNND5L13
NN			Tipping Restraint Hardware	1	PH-FTRHH510

*The hardware quantities listed above are required for proper assembly.
Extra hardware pieces may be included.*

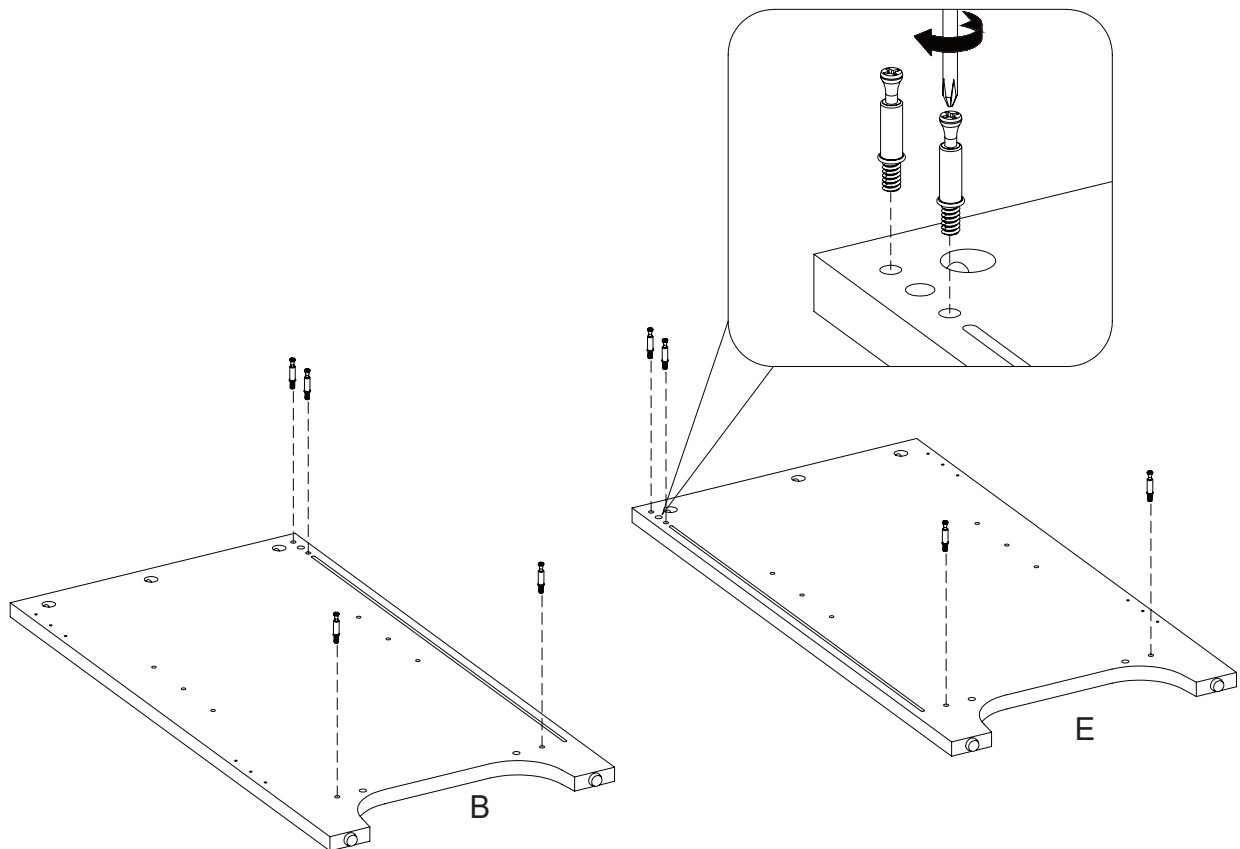


Installed Replacements Parts

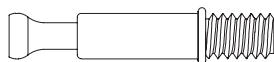
	Part	Size	Name	Quantity	Part code
00			Floor glide	4	PH-GLDWHT001

Step 1

Let's get started! First, screw the cam bolts (AA) into both the left side panel (B) and the right side panel (E).



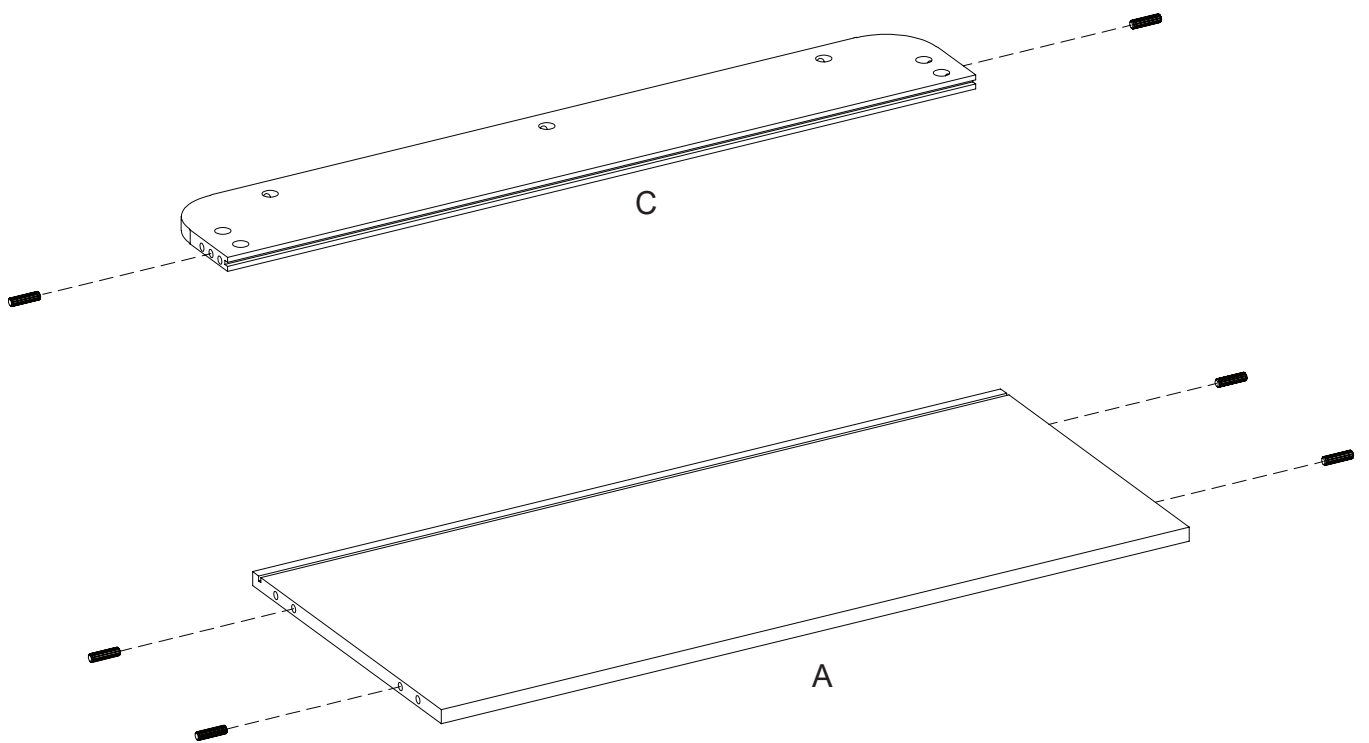
AA



[x8]

Step 2

Next, insert the wood dowels (BB) into both the back upper rail (C) and the bottom panel (A).



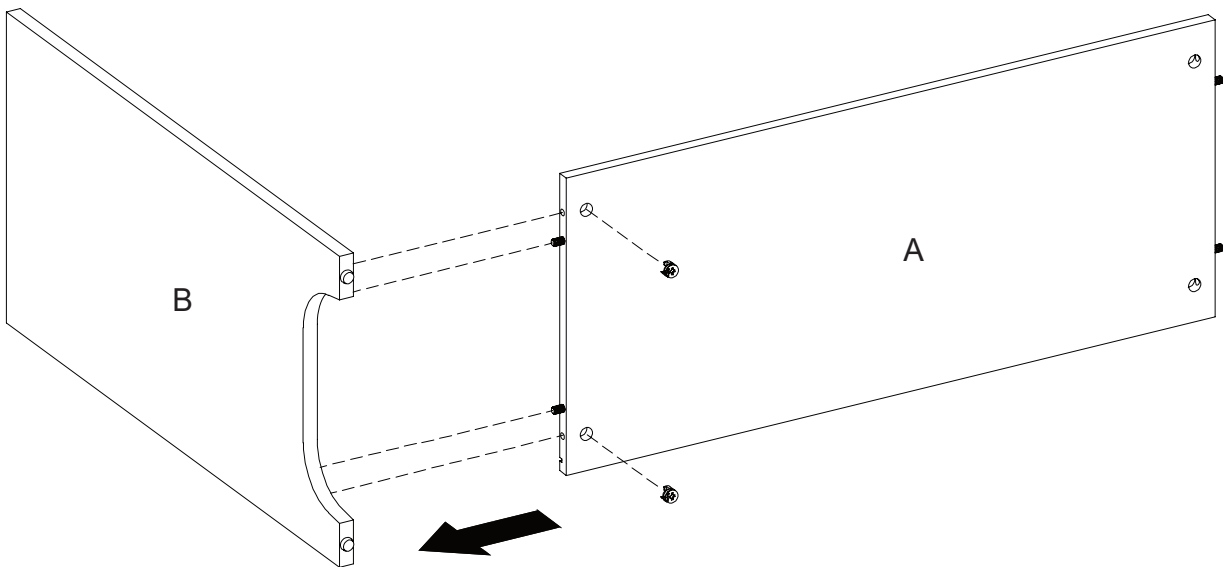
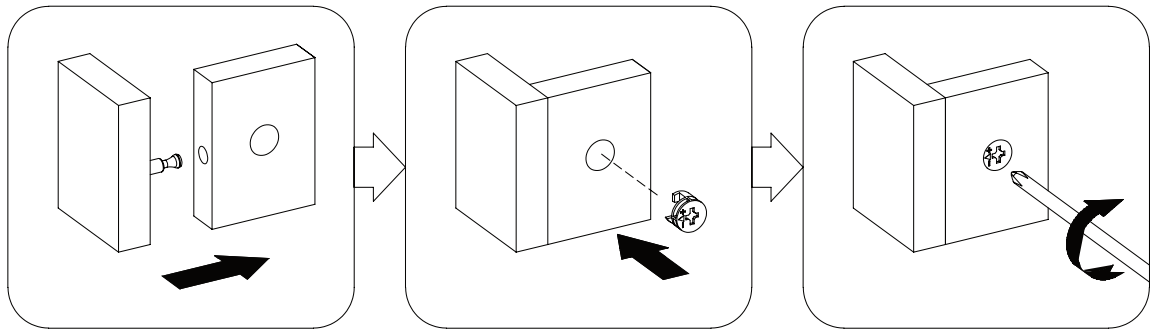
BB



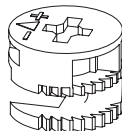
[x6]

Step 3

Now, align the cam bolts to the pre-drilled holes and attach the left side panel (B) and the bottom panel (A). Tighten with the cam locks (CC) as shown in the image.



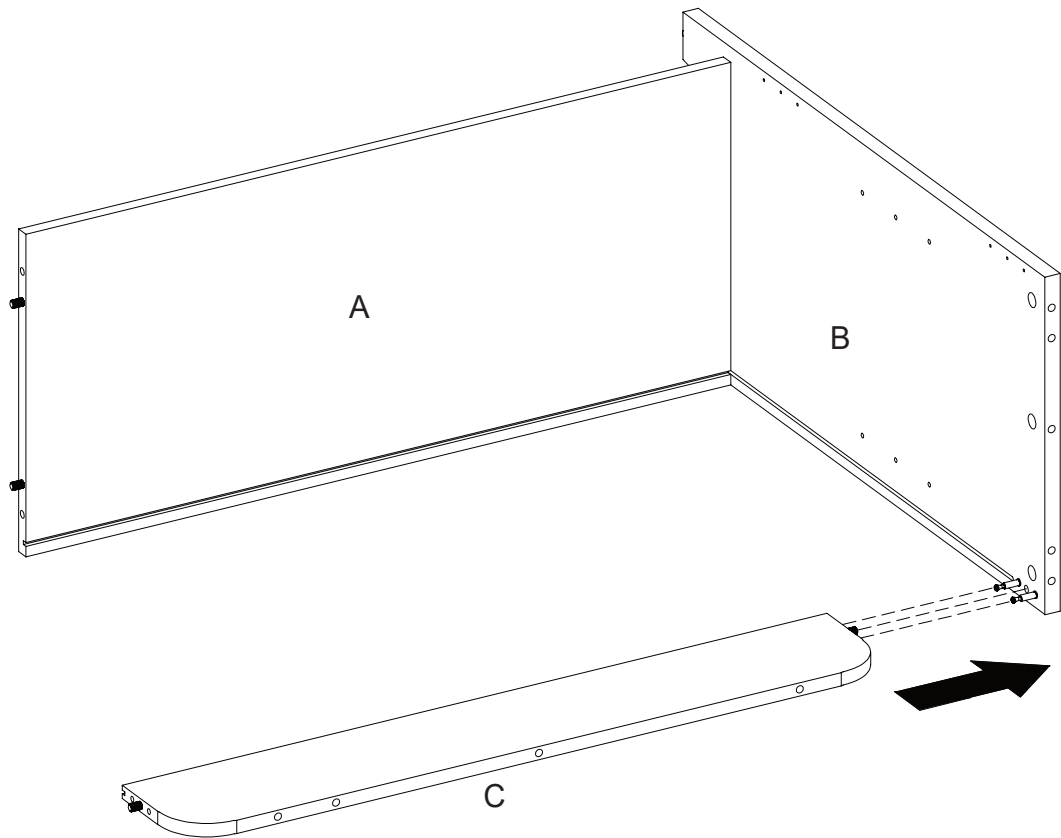
CC



[x2]

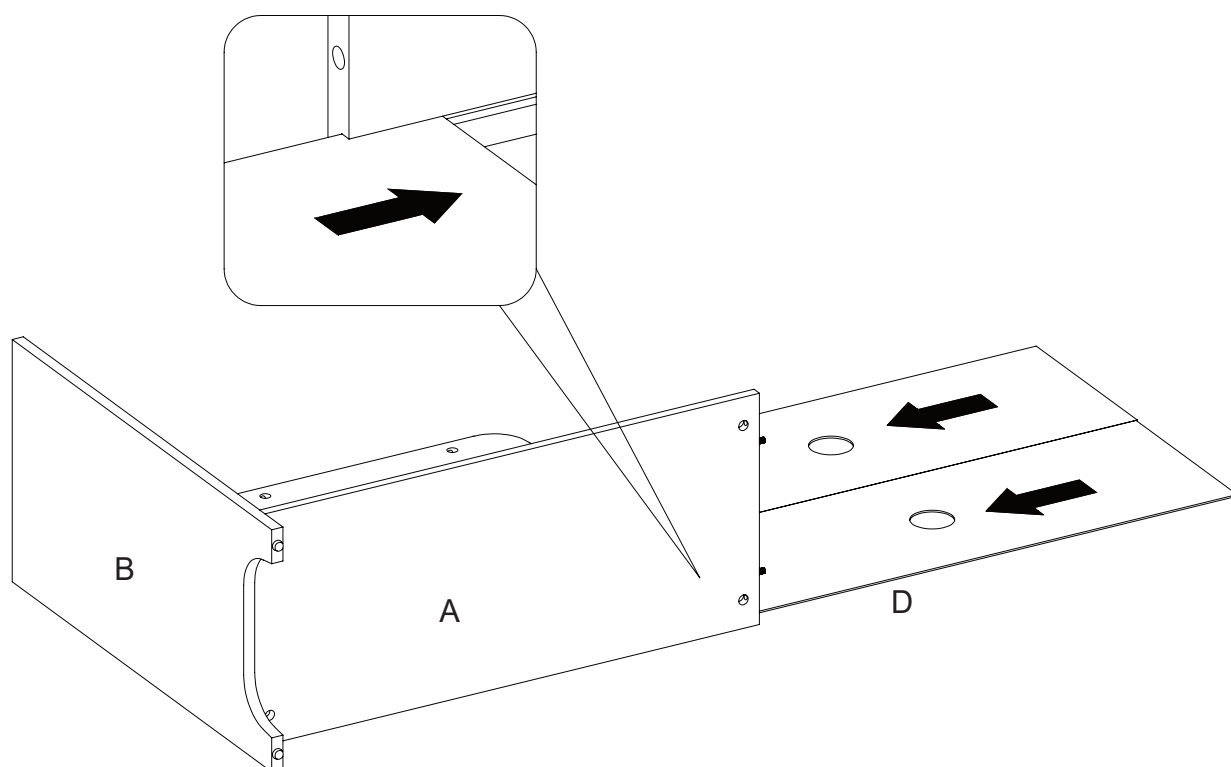
Step 4

Align the wood dowels to the pre-drilled holes and attach the back upper rail (C) to the assembled unit as shown.



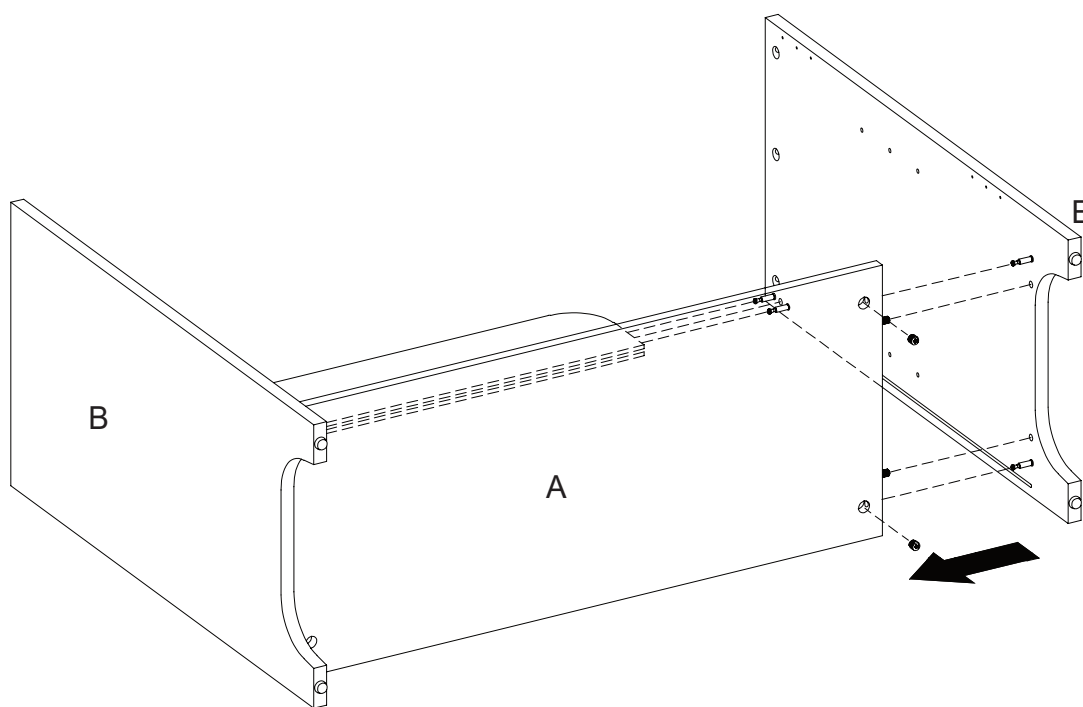
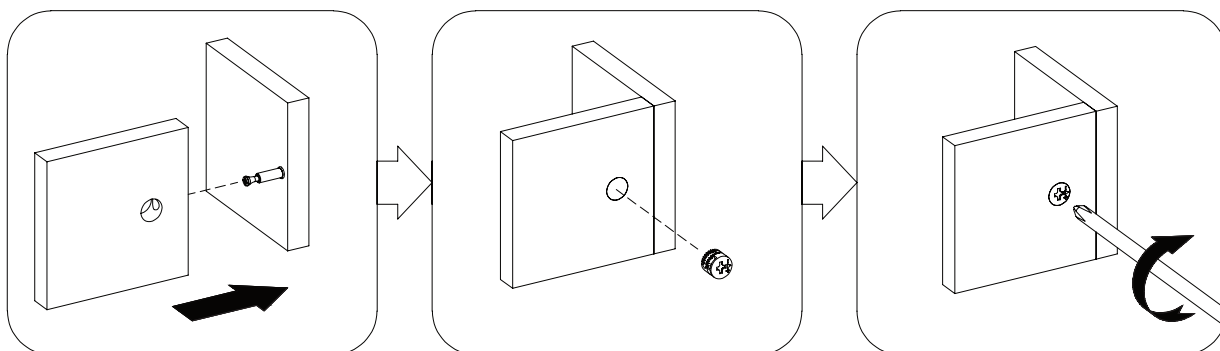
Step 5

Taking care to follow the direction of the arrows shown in the image, slide the back panel (D) into the bottom panel (A).

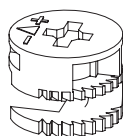


Step 6

Now, align the cam bolts to the pre-drilled holes and attach the right side panel (E) to the main assembly. Tighten everything into place using the cam locks (CC).



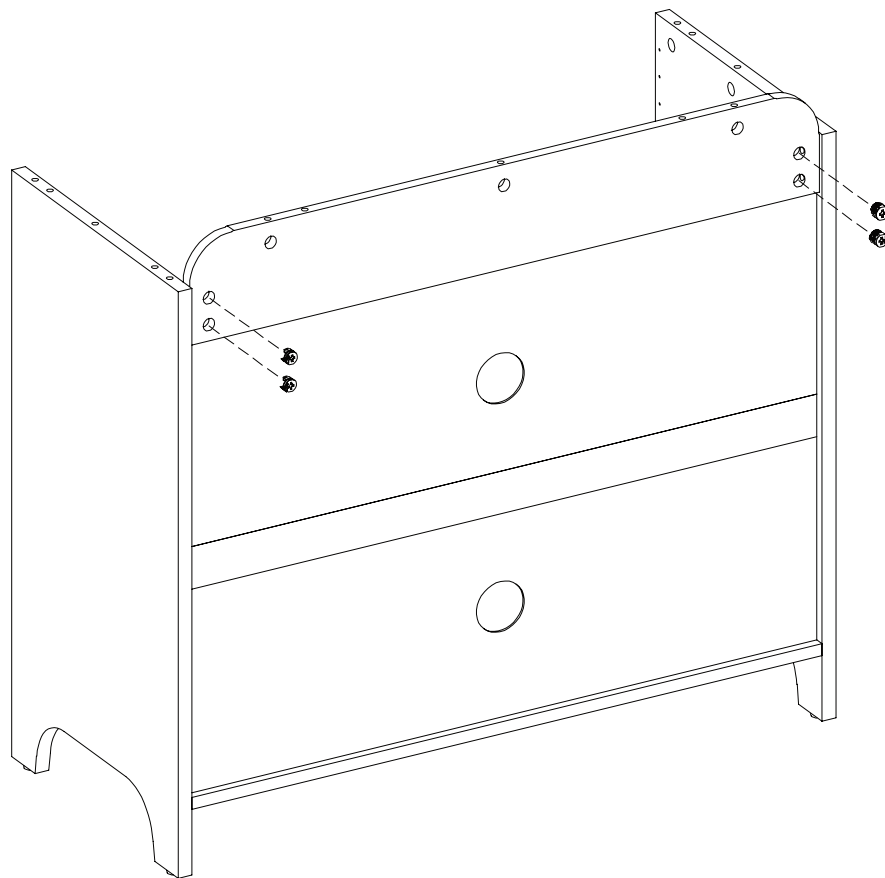
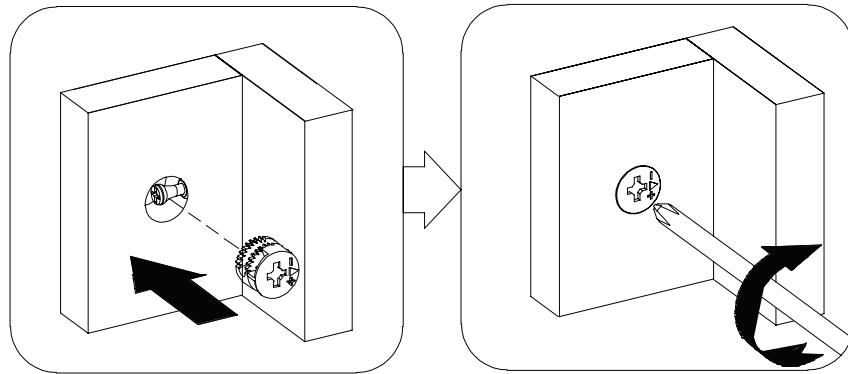
CC



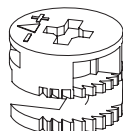
[x2]

Step 7

With assistance, set the assembled unit on its feet, and tighten the cam locks (CC) into place.



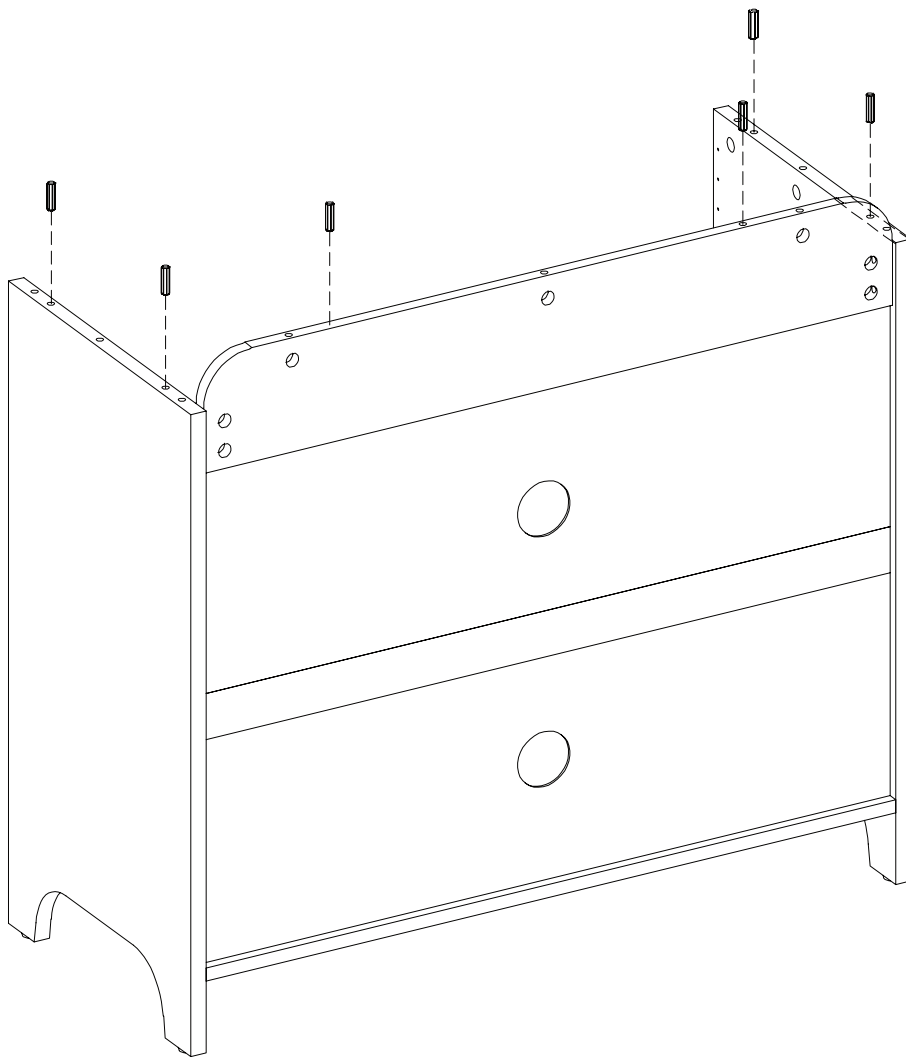
CC



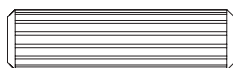
[x4]

Step 8

Then, insert the wood dowels (BB) into the pre-drilled holes as shown.



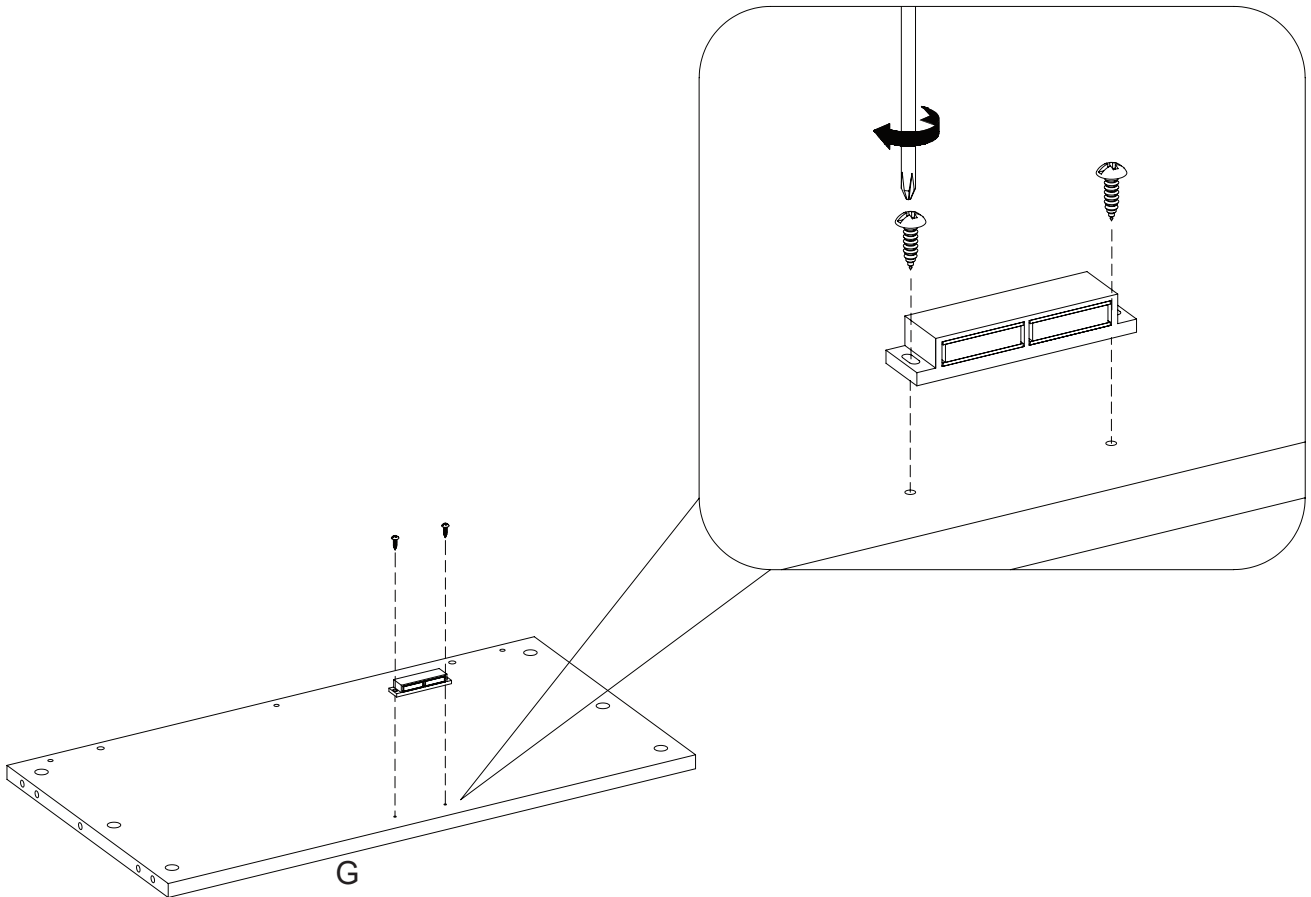
BB



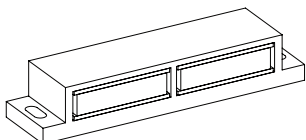
[x6]

Step 9

Attach the magnetic catch (EE) to the top panel (G) using the screws (FF).

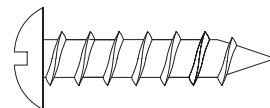


EE



[x1]

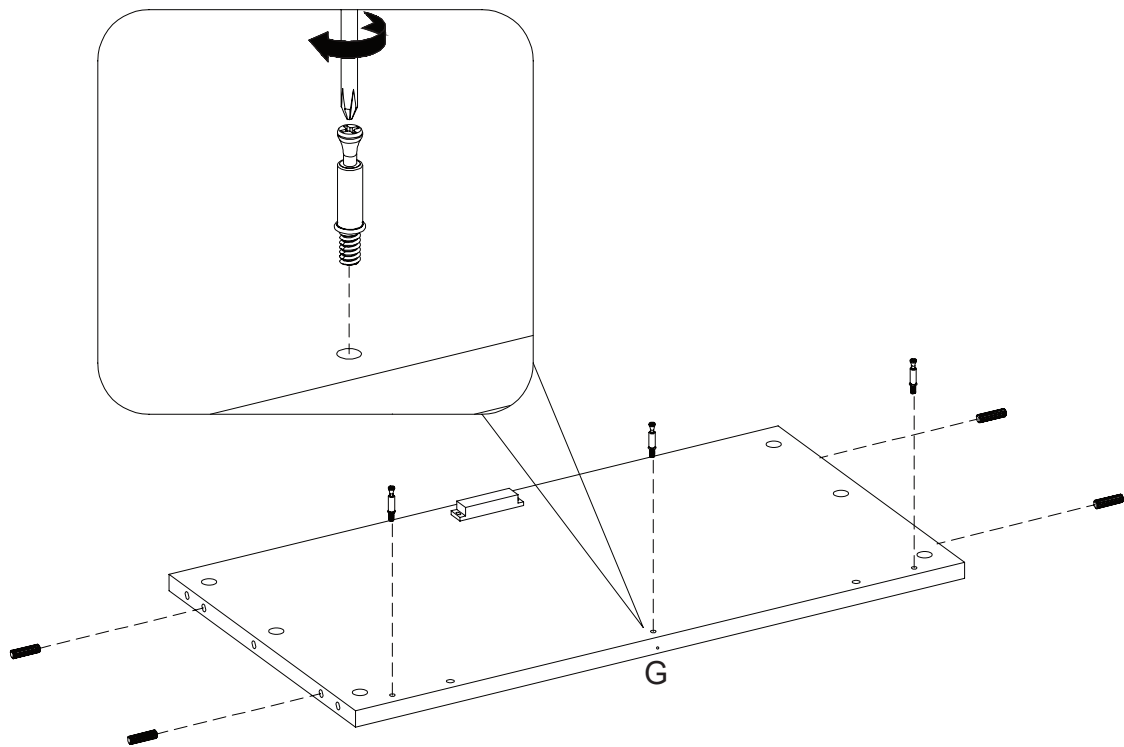
FF



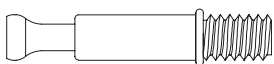
[x2]

Step 10

Next, screw the cam bolts (AA) into the top panel (G) and insert the wood dowels (BB) into the sides of the top panel (G) as shown in the image.



AA



[x3]

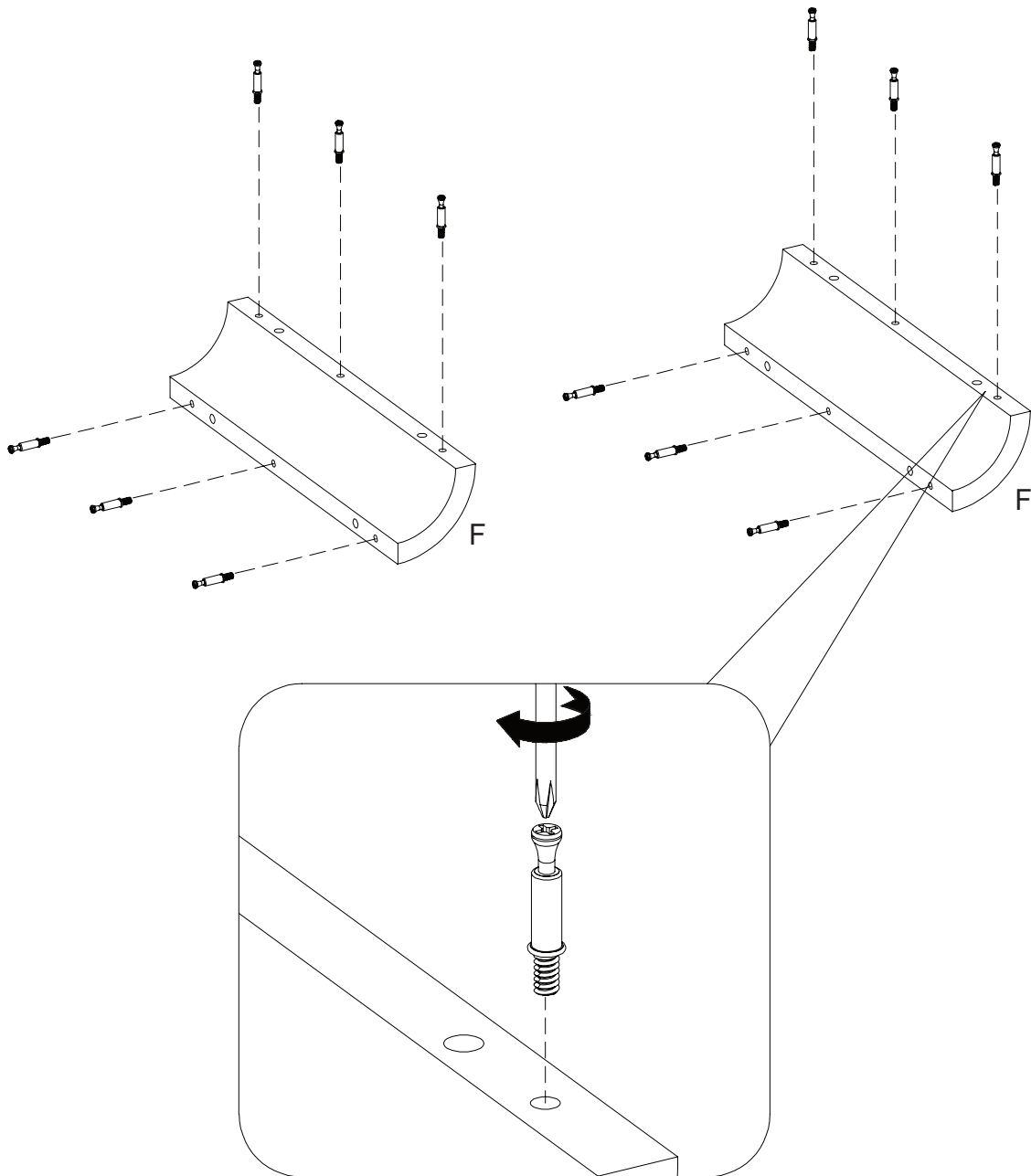
BB



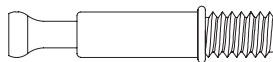
[x4]

Step 11

Screw the cam bolts (AA) into the corner panel (F).



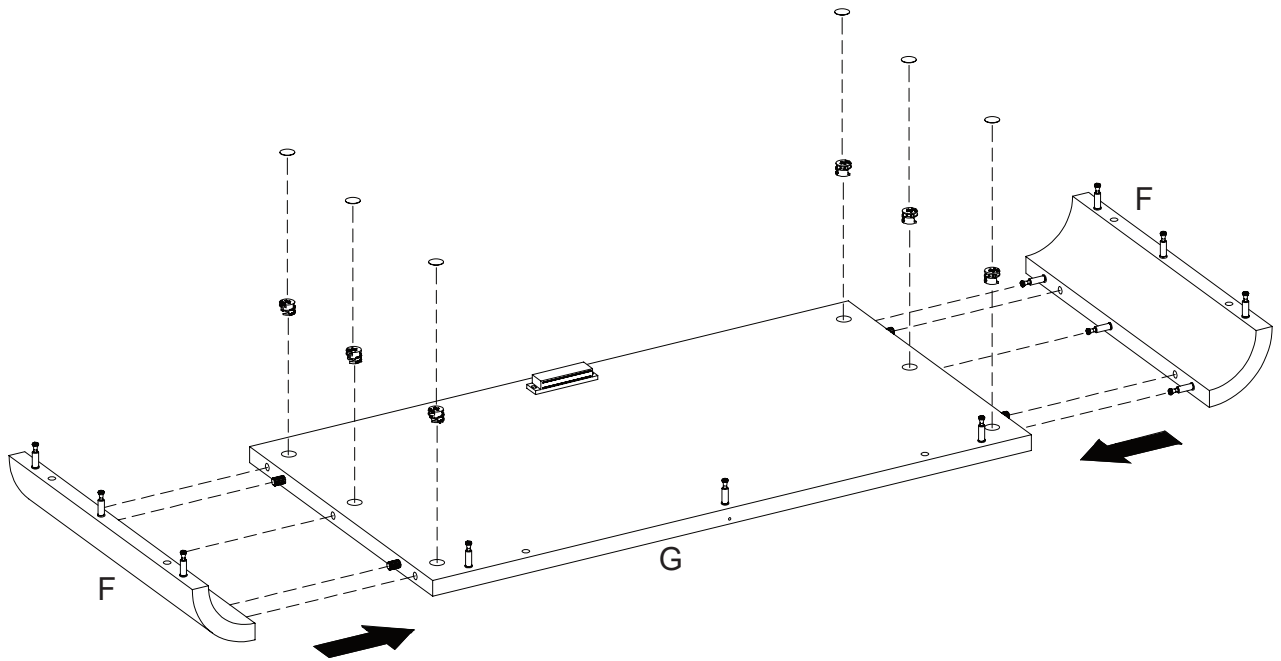
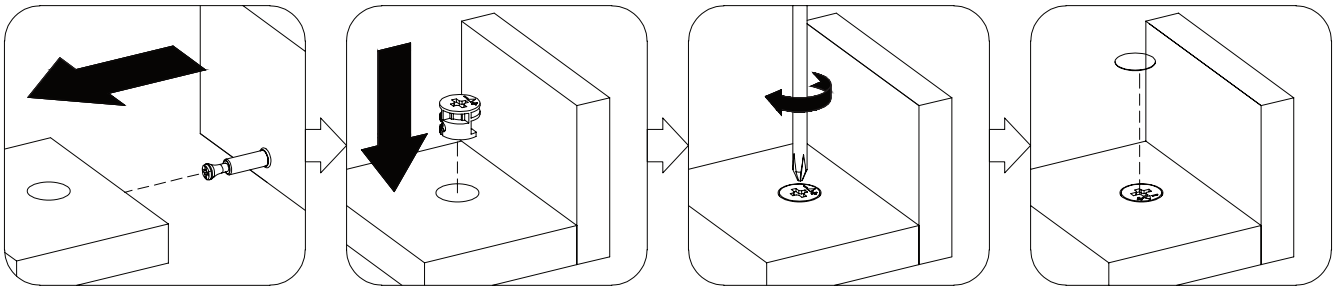
AA



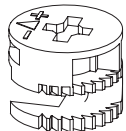
[x12]

Step 12

Then, align the cam bolts (AA) and wood dowels (BB) to the pre-drilled holes and attach the corner panel (F) to the top panel (G). Tighten the cam locks (CC) to secure the pieces in place and then place a cover (DD) over the cam locks (CC).



CC



[x6]

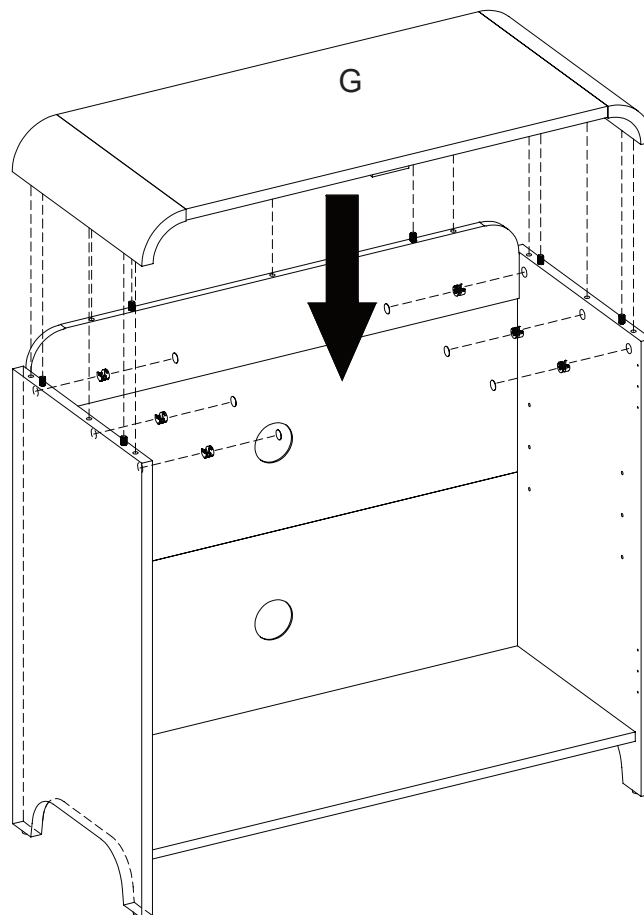
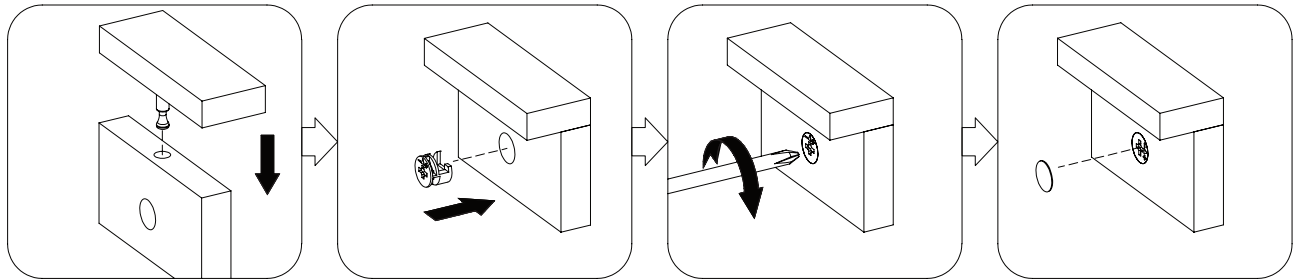
DD



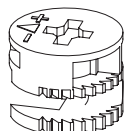
[x6]

Step 13

Now it's time to attach the top panel! Align the cam bolts to the pre-drilled holes and attach the top panel (G) to the main assembly. Secure everything together with the cam locks (CC) and then place a cover (DD) over each cam lock.



CC



[x6]

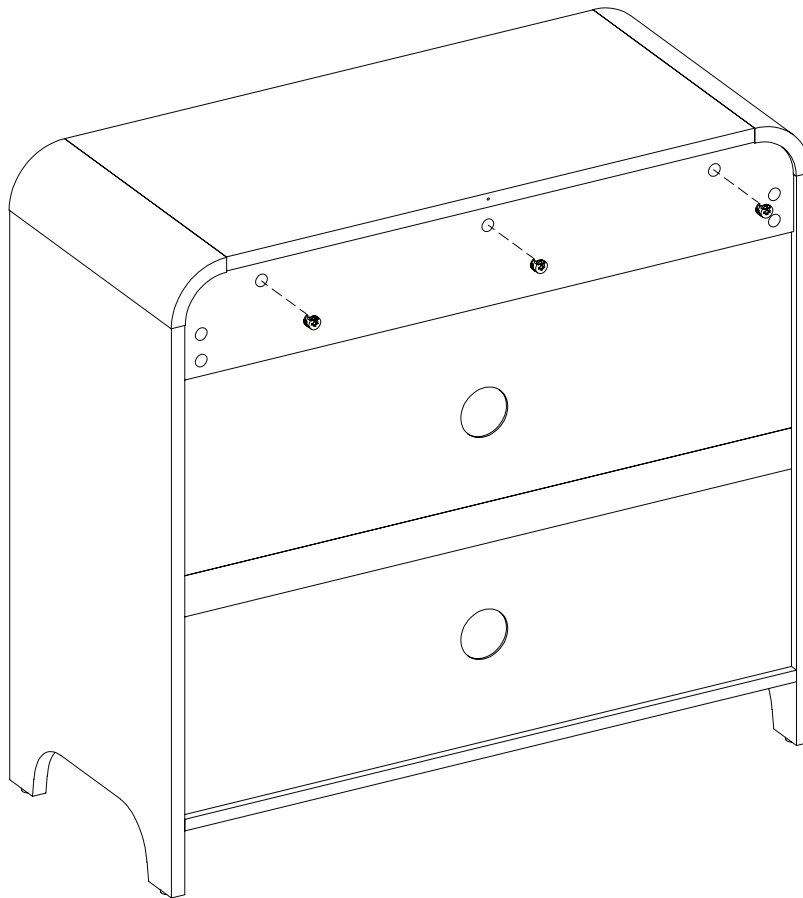
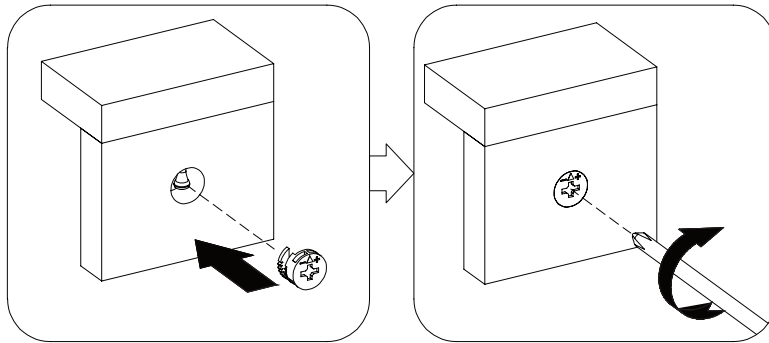
DD



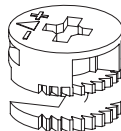
[x6]

Step 14

Tighten the cam locks (CC) into place as shown in the image.



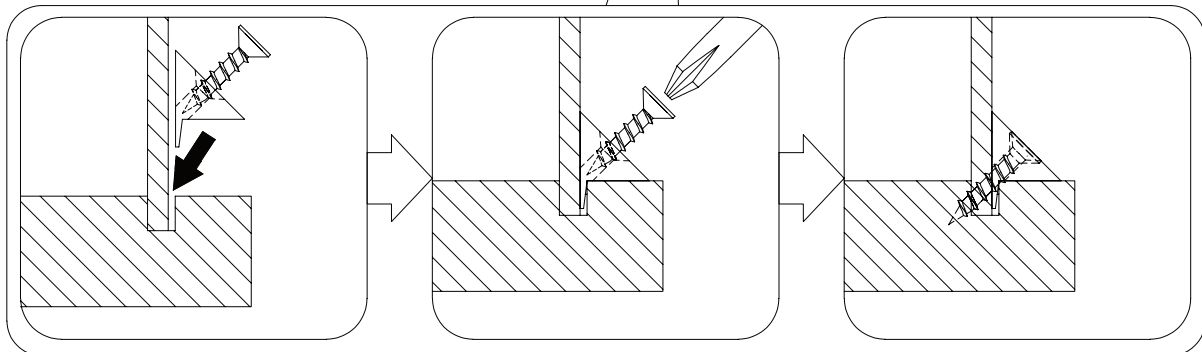
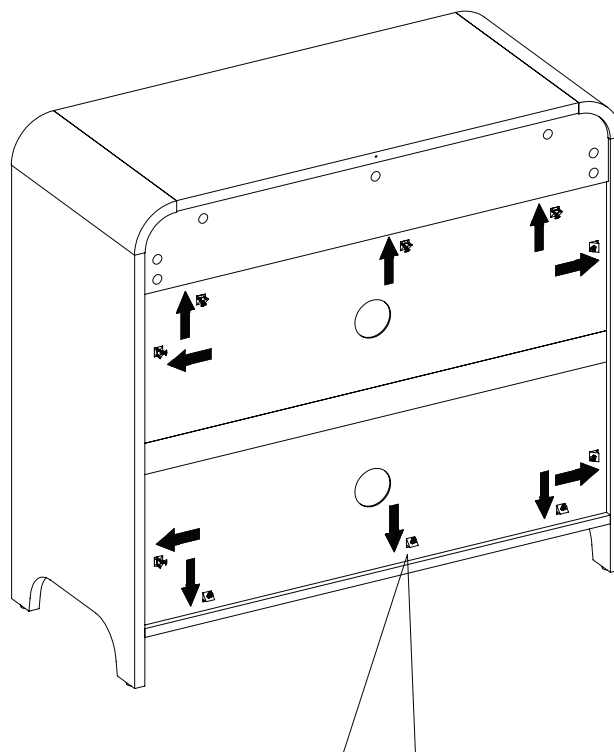
CC



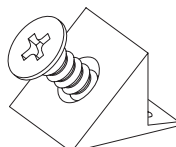
[x3]

Step 15

Now, screw the back panel brackets (GG) into place.



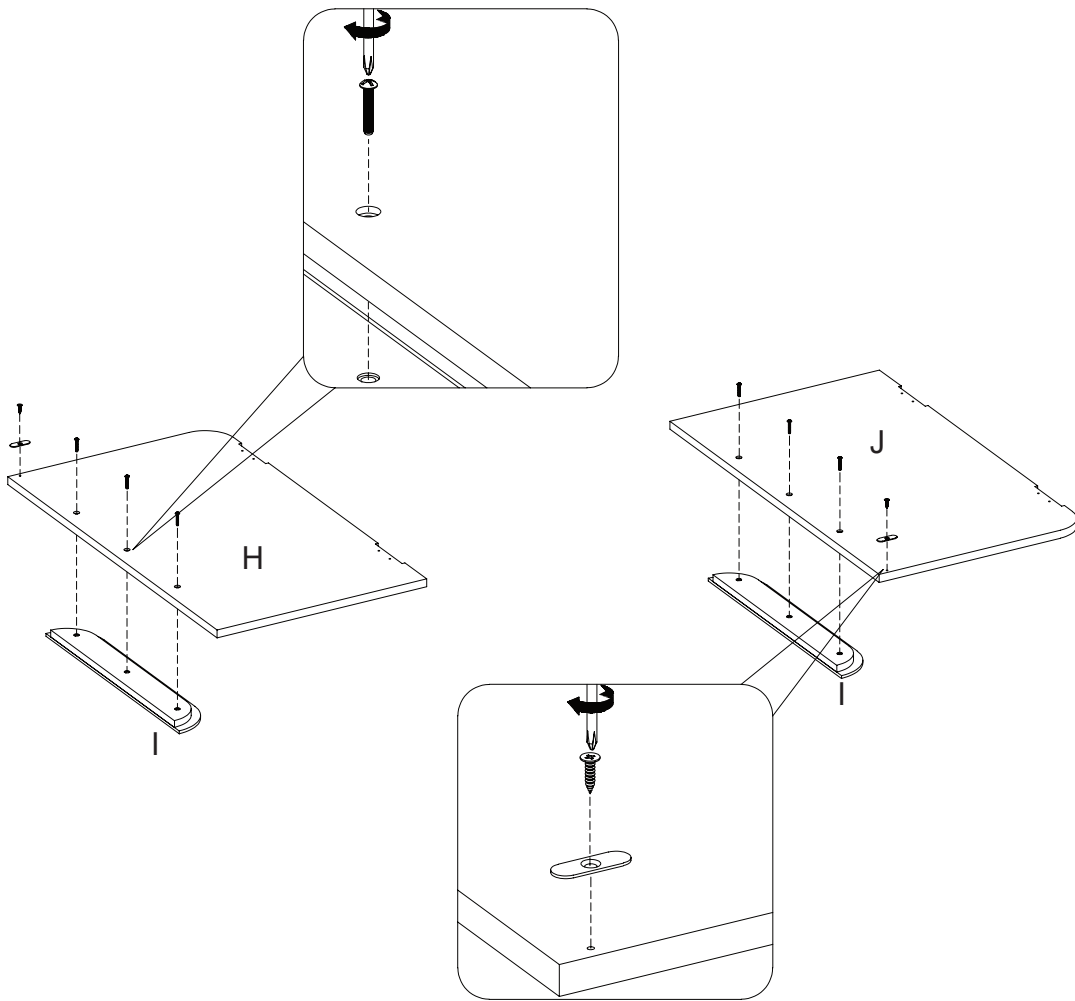
GG



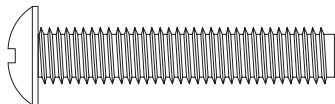
[x10]

Step 16

Align the pre-drilled holes in the handle (I) to the left door (H) and secure using the bolts (HH). Then, secure the metal plate (II) using the screws (JJ). Then repeat this process with the right door (J).

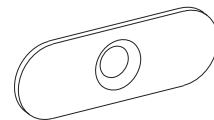


HH



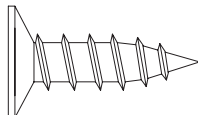
[x6]

II



[x2]

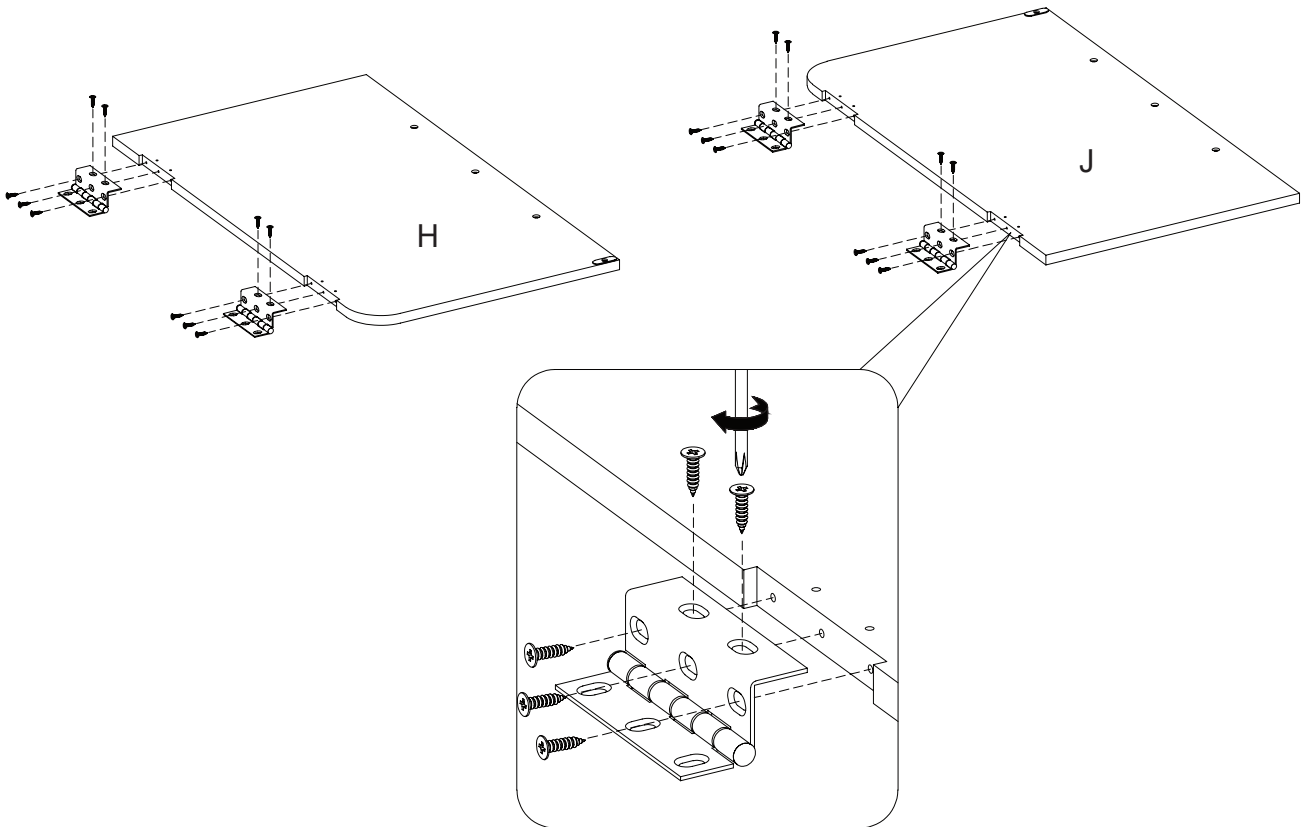
JJ



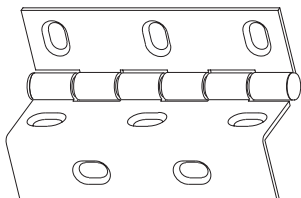
[x2]

Step 17

Attach the barrel hinges (KK) to the left and right doors (H and J) using the screws (LL).

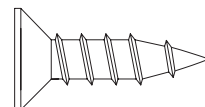


KK



[x4]

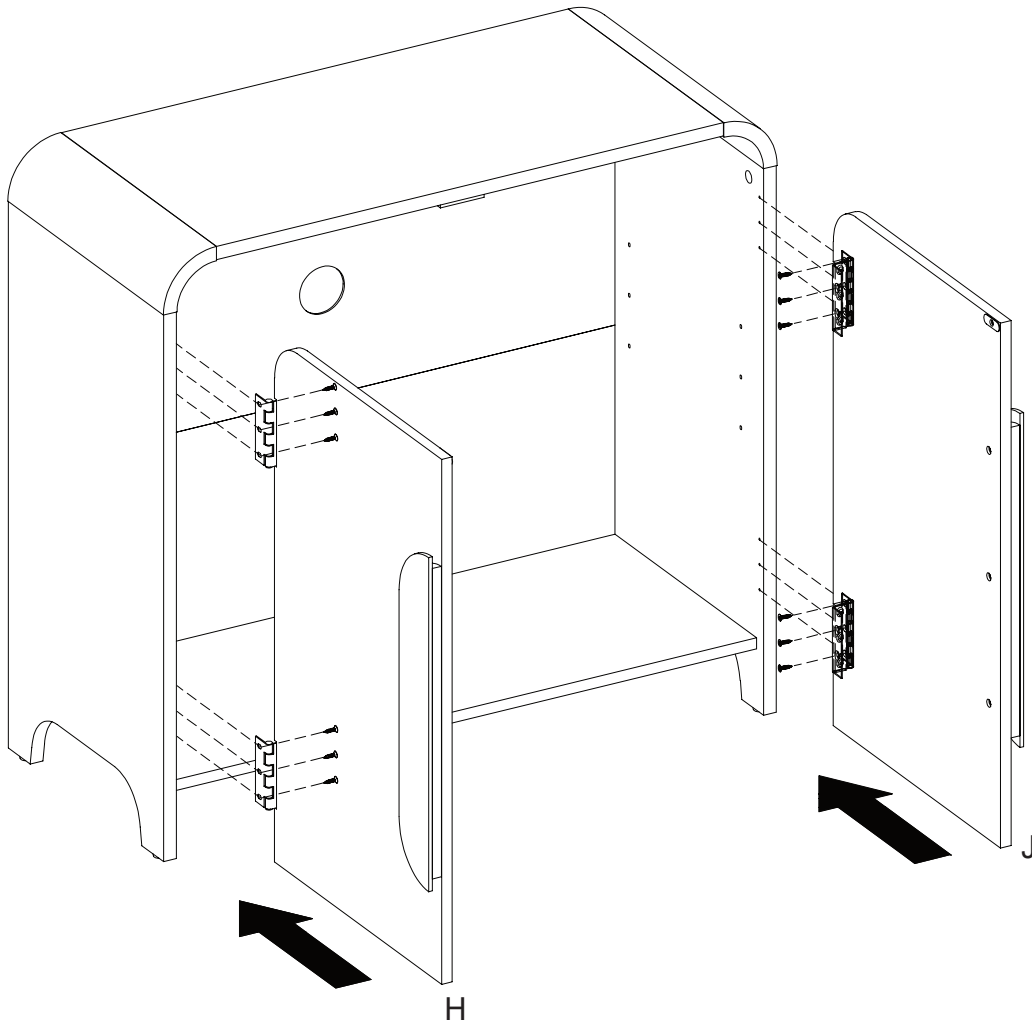
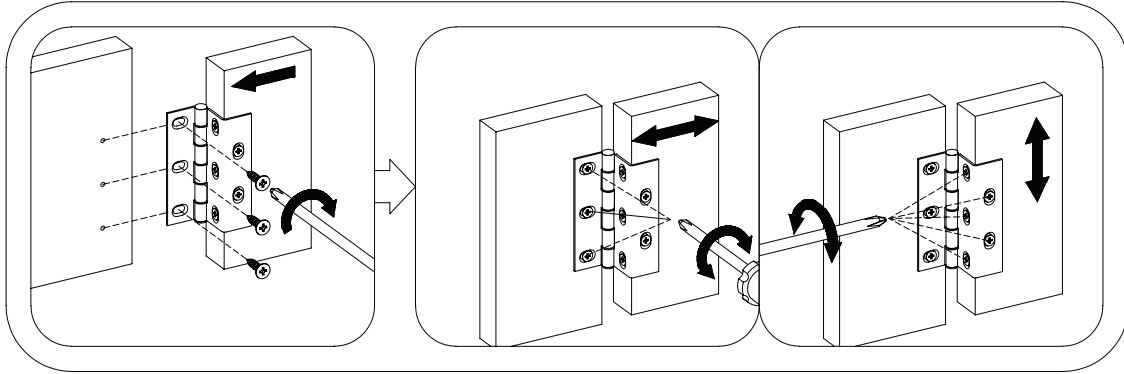
LL



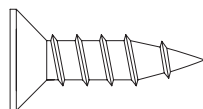
[x20]

Step 18

Align the barrel hinges (KK) to the pre-drilled holes in the main assembly and secure everything together using the screws (LL).

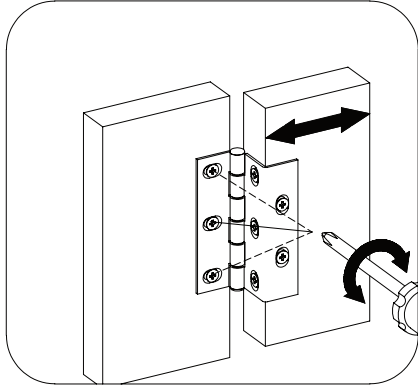


LL



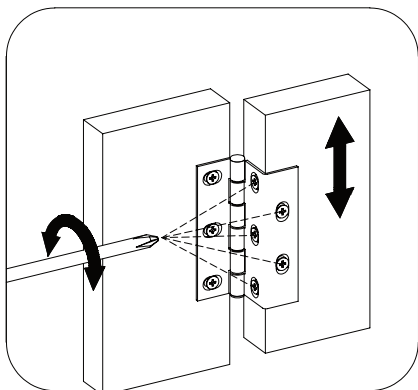
[x12]

Note: If you find the doors need to be adjusted slightly, turn the appropriate screw as illustrated.



TO ADJUST DOOR FORWARD OR BACKWARD

Loosen the screw and slide the hinge into position, then retighten.

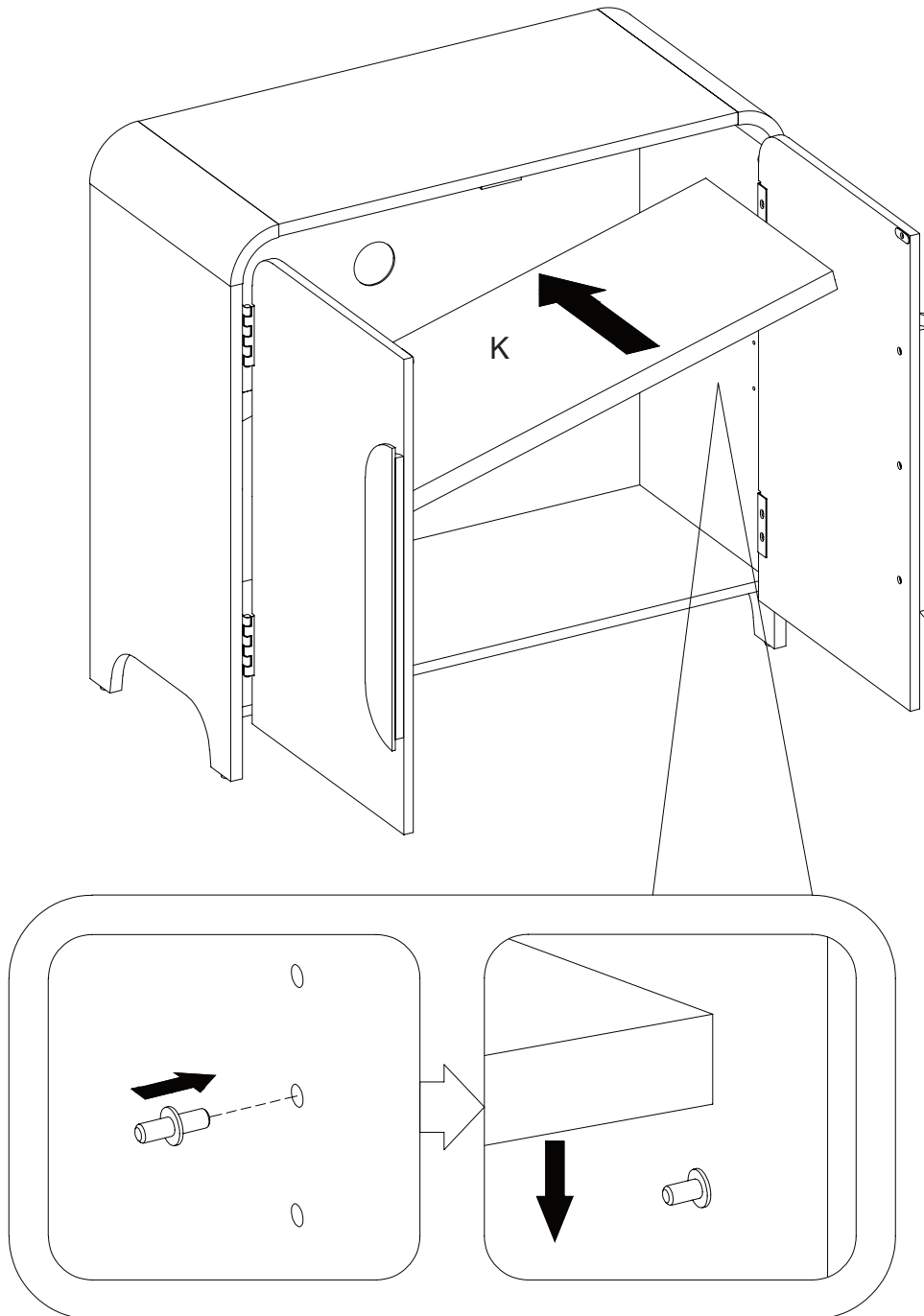


TO ADJUST DOOR UP OR DOWN

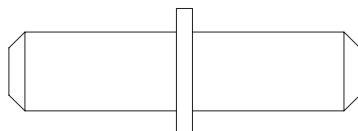
Adjust the four screws at the top and bottom of the hinge. Each screw should be loosened or tightened in small increments.

Step 19

Select your preferred height for the shelf and insert the shelf pins (MM) into the pre-drilled holes as shown. Then tilt the adjustable shelf (K) to the side as you place it inside the main assembly before placing it on top of the shelf pins (MM).



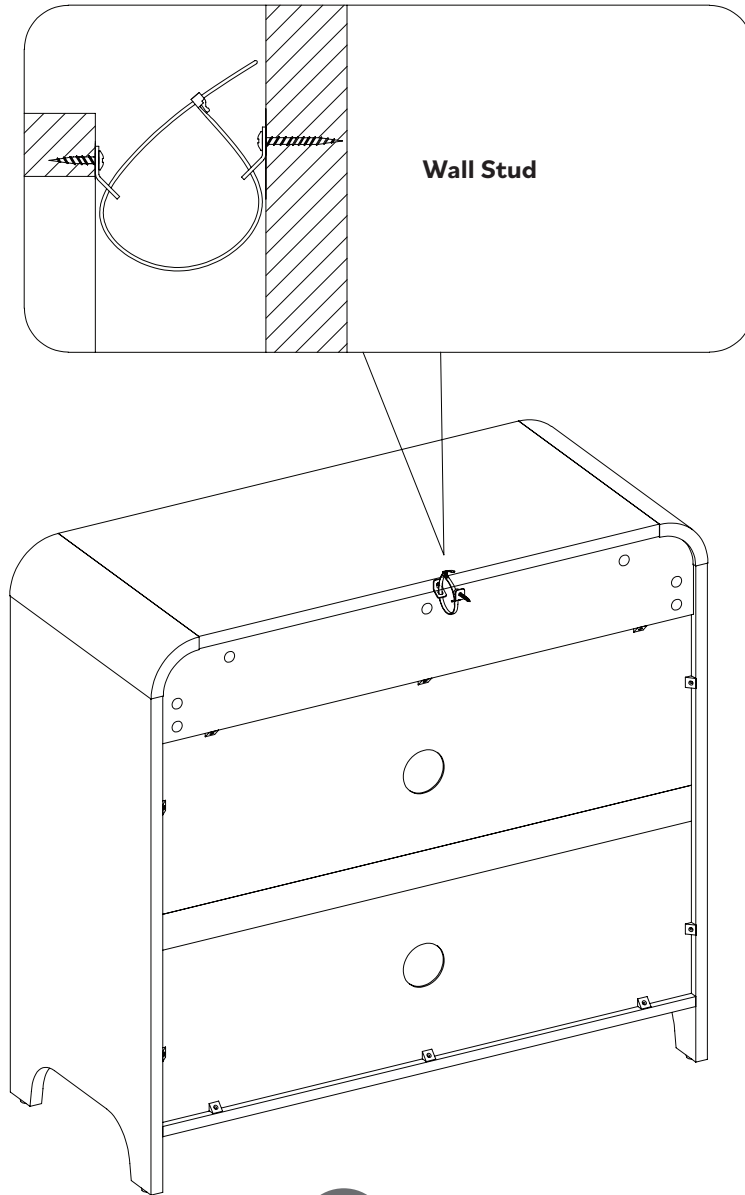
MM



[x4]

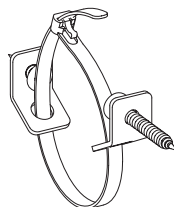
Step 20

Last step! Attach the tip-restraint hardware (NN) to the back of unit.



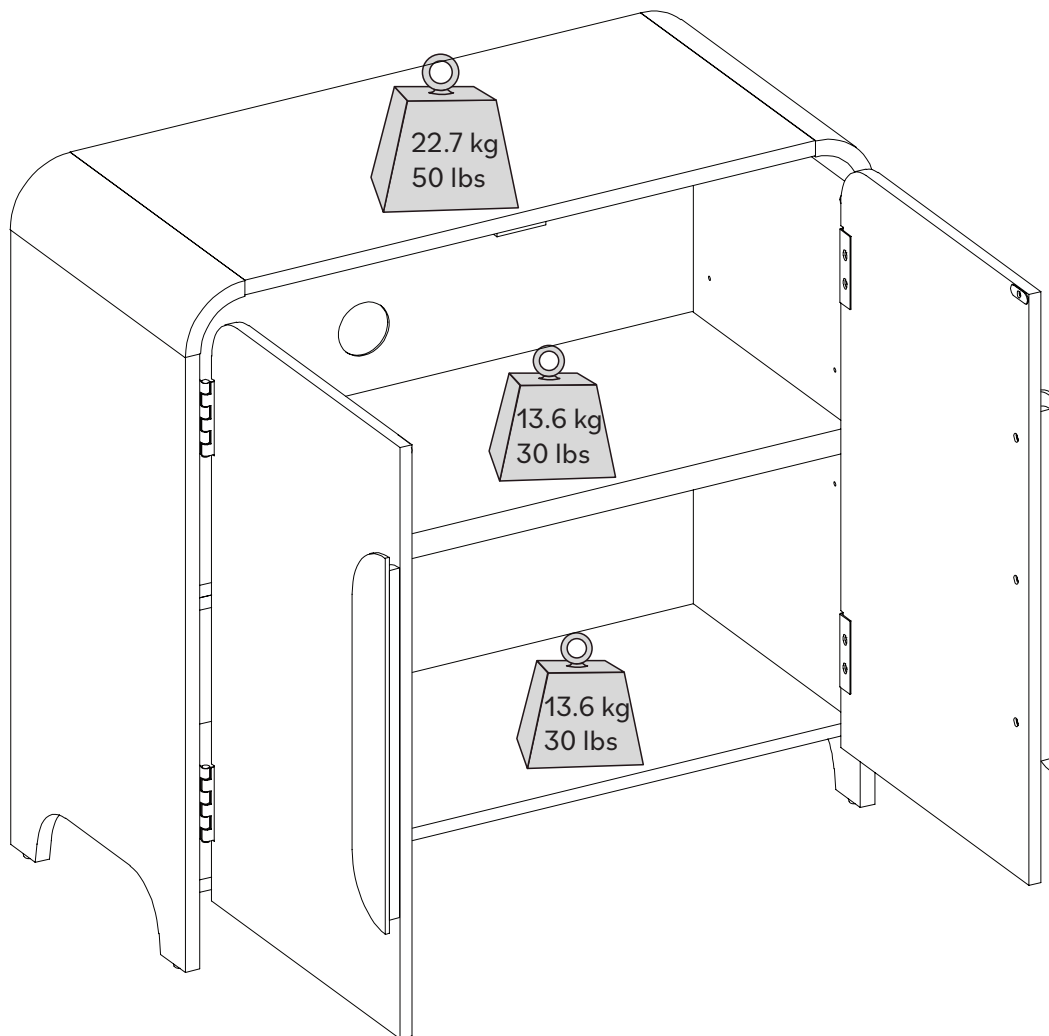
Warning: You must install the tip restraint hardware to help prevent any accidents or damage to the unit. We strongly recommend attaching the tip restraint hardware to a wall stud and your unit. For all other wall types, please visit your local hardware store to obtain the proper hardware.

NN



[x1]

Final Assembly



Congratulations on your new piece of furniture!

We would love to hear about it and see it.
Please leave us a review or post a picture with
#mywalkeredisonhome

Assembling furniture can be tricky sometimes.

Our customer service team, located in Utah, is here for product information, help assembling a product, or for any other customer support issue

Call us at **801-433-3008**

Email us at service@walkeredison.com

Visit our Customer Service website at walkeredison.com/pages/customer-service

We are available to help Monday -Thursday 8am-5pm, Friday 8am-3pm MST

For details on Assembly Videos, Assembly Instructions, Replacement Parts, and Customer service,

SCAN HERE

