



FREESTANDING TUB INSTALLATION & Care Guide

TABLE OF CONTENTS

Freestanding Tub Installation	3
Tools & Material Required	3
Rough-In	3
Installation Instructions	4
Post Installation Cleanup/Maintenance	5



FREESTANDING TUB INSTALLATION

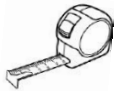
Thank you for choosing Tubular. Please read the subsequent instructions before you get started with your Freestanding Tub Installation.

Make sure to follow all plumbing, electrical, and construction guidelines and codes. Local building codes vary by location. Contact a Customer Service Representative at _____ if any damages are found after inspection of your product at discharge, or for any further assistance regarding the installation of your product.

Please note that your Freestanding Tub requires a floor surface sufficiently supported and leveled. Consider all accessible entry points and inform yourself of their dimensions to guarantee the easy maneuver of your Freestanding Tub into the chosen installation site.

To avoid scratching while handling your Freestanding Tub, use only non-abrasive cloths. We advise to consult a professional if you are unacquainted with bathroom fixtures and plumbing installations. Tubular accepts no liability for any personal injury during installation or any damages to the walls, plumbing, or floor.

TOOLS & MATERIALS REQUIRED



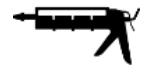
MEASURING TAPE



ADJUSTABLE WRENCH



PENCIL



CAULKING GUN



STANDARD TOOLS



LEVEL



SILICONE



PERSONAL
SAFETY EQUIPMENT

ROUGH-IN

Depending on your plumbing entry, the sort of drain and connection system will vary. Be advised to take into consideration the material and height of the finished floor to establish the type of connection system needed.

To determine desired location of the drain, and for measurement descriptions, refer to the appropriate Specification Sheet.

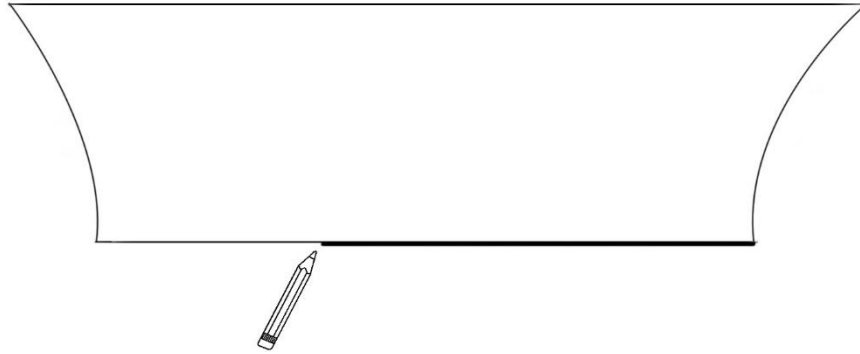
We greatly advise performing the rough-in procedures with your Freestanding Tub on site, as slight adaptations may be required due to approximate measurement specifications.



INSTALLATION INSTRUCTIONS

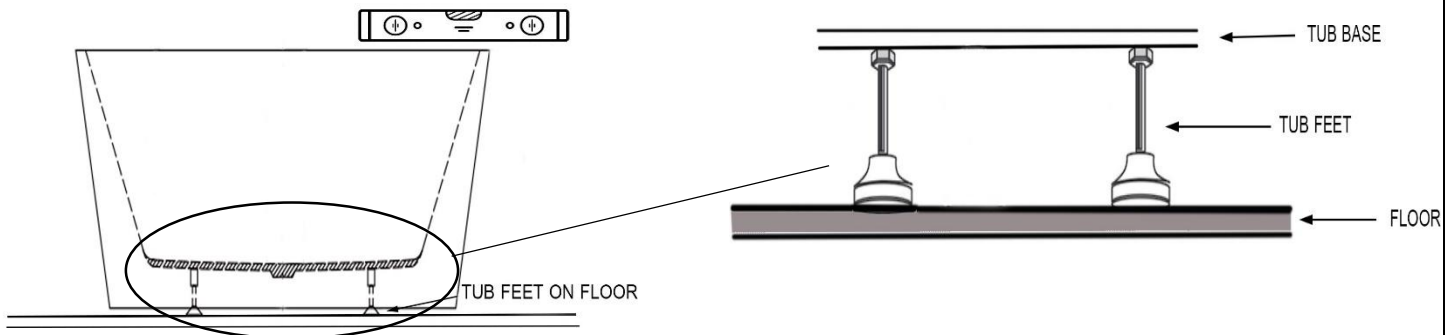
1. Unpack your Freestanding Tub from its casing and place it on a finished, leveled floor in the desired installation location.

Ensure the drain is in the correct location, and trace the outline of your Freestanding Tub's base on the floor with the use of a pencil.



2. Fine-tune the adjustable feet underneath the tub to ensure a gap of no more than $\frac{3}{16}$ " to $\frac{1}{4}$ " between the tub's base and the floor. The tub should **always** be supported by its feet and not by the surface of the tub itself.

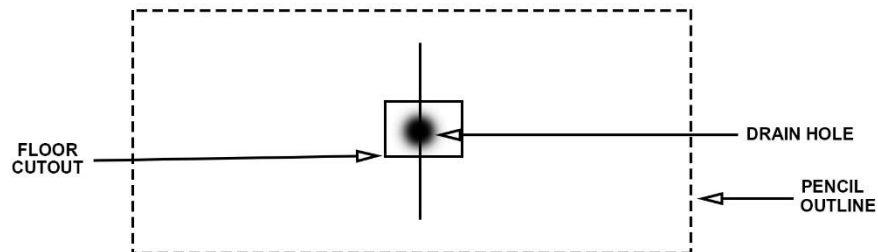
Ultimately, ensure that the tub is level with the floor.



3. Remove your Freestanding Tub so that the plumbing can be installed. Tilt the tub sideways, and carefully place it on a padded surface.

Confirm traced outline is in sync with measurements and drain location. See Specifications Sheet for details.

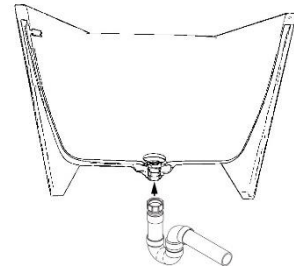
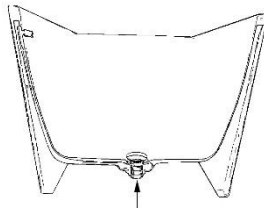
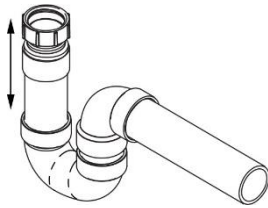
Note: Follow all plumbing, electrical, and construction guidelines and codes. Depending on your plumbing entry, the sort of drain and connection system will vary. Take into consideration the material and height of the finished floor to establish the type of connection system needed.



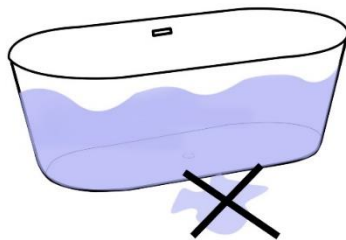


- For installation of the drain assembly and relocation of your Freestanding Tub, we strongly recommend consulting a professional.

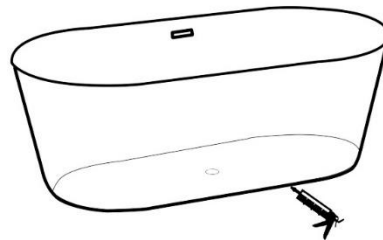
Note: Length of tail piece varies with installation setup. Plumbing connection must be done by a professional, as per code.



- Ensure there are no leaks and that the drain is working properly by filling the tub with water and draining it. Tighten connections accordingly.



- Employ the caulking gun with a generous silicone bead on and around the base of your Freestanding Tub. Remove excess caulking with a moist cloth as tub meets floor.



Wait 24 Hours.

POST INSTALLATION CLEANUP/MAINTENANCE

Installation of the bath and adjustment of the feet will be acceptance of quality. We will not accept responsibility for improper installation. Instructions must be followed accurately. We strongly advise consulting a professional installer. Remove all debris from bath. Liquid detergents or warm water can complete the Post Installation Cleanup. In case of deeper stains, ask your speciality professional. Rubbing with a fine 2000 grit waterproof abrasive paper and water could prove efficient in the event of scratches during installation. Deeper scratches might need an initial finer abrasive paper. However, there are possibilities to remove scratches without an abrasive paper. Ask speciality professional for details. Shrinkage lines, blemishes, and air holes that are found on the bottom of the tub do not affect in any way the quality of the product nor its warranty, and should not be considered defects. Do not use any wire brushes or any other metal tool on bath surface to remove stains. Abrasive cleaning products will fade the gloss finish over time. be advised that some cleaning products might damage the metal parts of the bath. You may use non-abrasive kitchen or bathroom cleaners. Acetone, nail polish, or other solvents should not meet bath surface. Cigarette burns may cause surface damage. Overly hot water may cause surface damage. Make sure to always temperate the water. After bath use, remove mat and hang dry as it can cause surface damage. Surrounding surface must immediately be cleaned after using caustic drain cleaners. Damages to fixture can be repaired. Call your distributor for details. All Post Installation Cleanup/Maintenance advice are the sole responsibility of the owner. Tubular accepts no liability for damages done in the Post Installation Cleanup/Maintenance. All Tubular products are covered by a limited warranty against manufacturing defects. None of Tubular employee, representative, or associates will be in any way liable, personally or otherwise, for any damage or loss encountered due to the product. In the event of any type of damage related to the installation of the product, or in any other way related to the product, Tubular liability will be strictly limited to the value of the product.