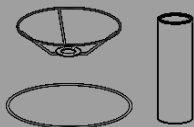


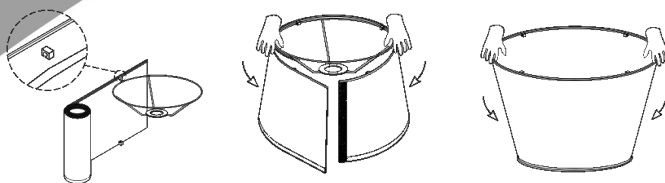
STEPS TO ASSEMBLE THE LAMPSHADE

- 1** Take out the lampshades and round iron frames.

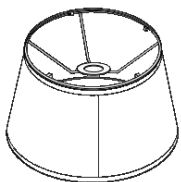


Align the frame with the edge of the lampshades and secure it in place using fasteners. Repeat the process for the second frame. Ensure that the frames are firmly attached and the lampshades are tightly stretched.

2

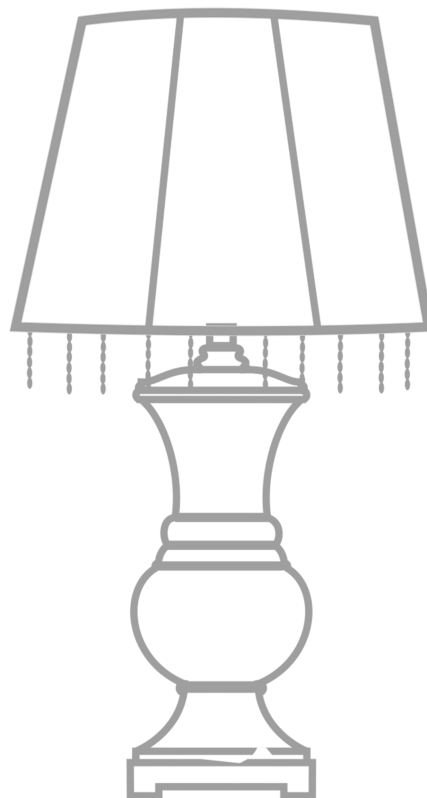


- 3** For an oblique barrel-shaped lampshade, align the lamp frame by placing its short edge on the corresponding short side of the lampshade and the long edge on the corresponding long side.



T01

INSTRUCTION MANUAL



4MODERN 4HOME

[illegible]