



Portable Handwash Stand



A20-083



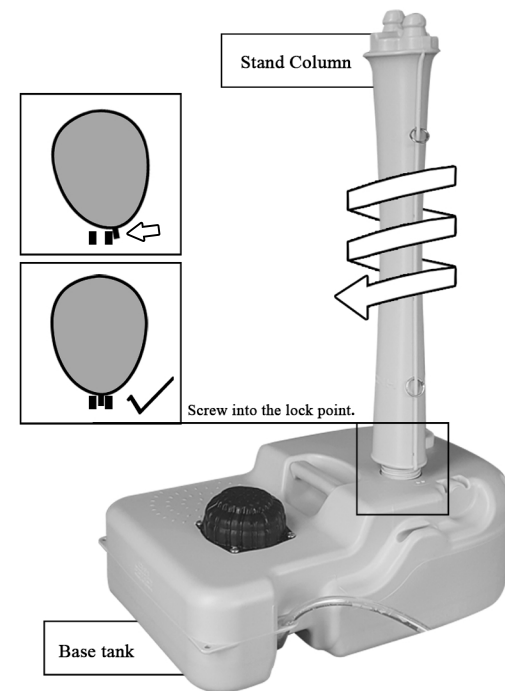
1. 180ml water will be pumped out continuously by one step.
2. 17L fresh water tank, 3L liquid soap tank.
3. More than 100 washes by a single fill-up.
4. 1ml liquid soap dispenser included.
5. Equipped with multipurpose towel rack.
6. Equipped with wheels for moving.
7. Equipped with flexible hose for draining.



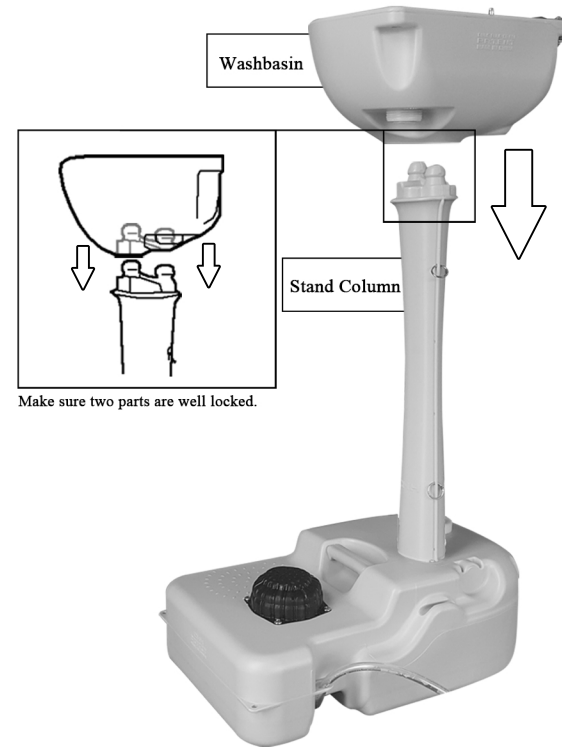
1. Please always assemble according to the instruction.
2. Base tank can be fixed on ground through four holes at the corner if necessary.

-  × 1
-  × 1
-  × 1
-  × 1
-  × 1
-  × 1

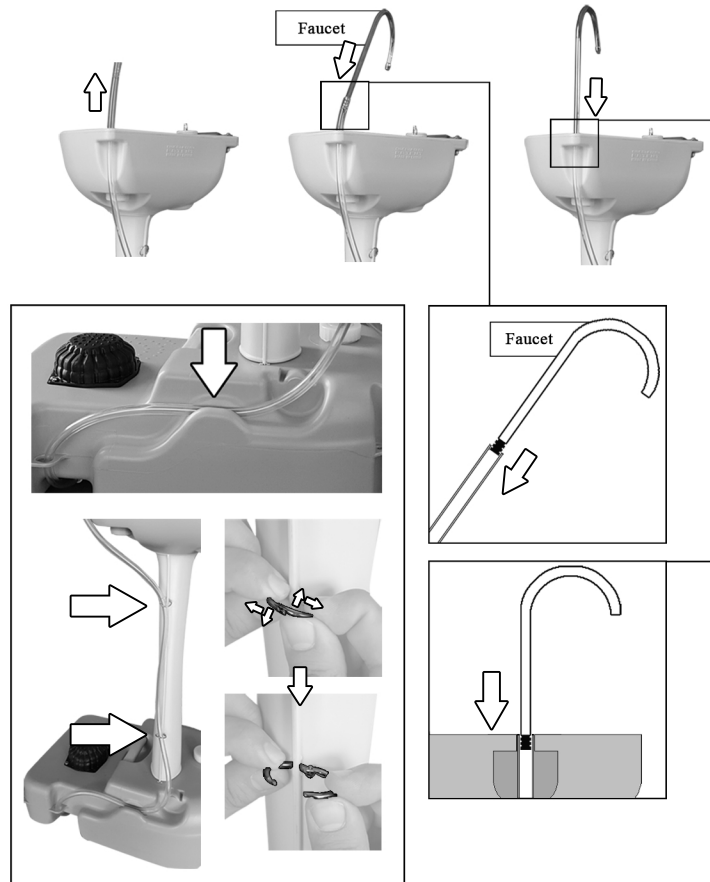
1 Screw the stand column in the base tank.



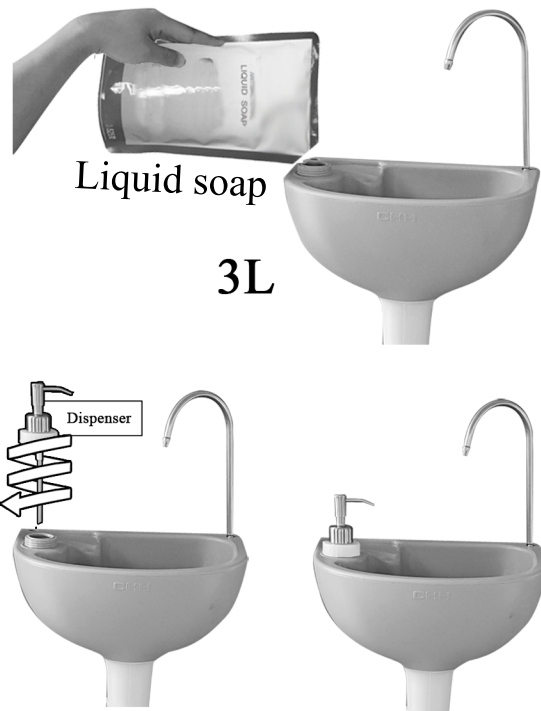
2 Assemble the washbasin on the top of the stand column.



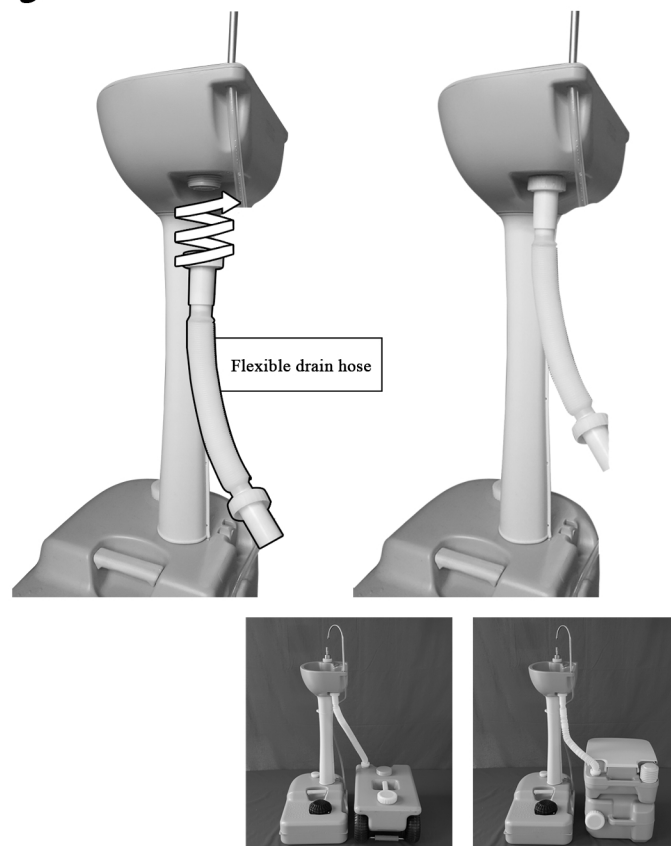
3 Insert faucet into transparent tube and fix it on the washbasin, then fix the tube with base tank and stand column.



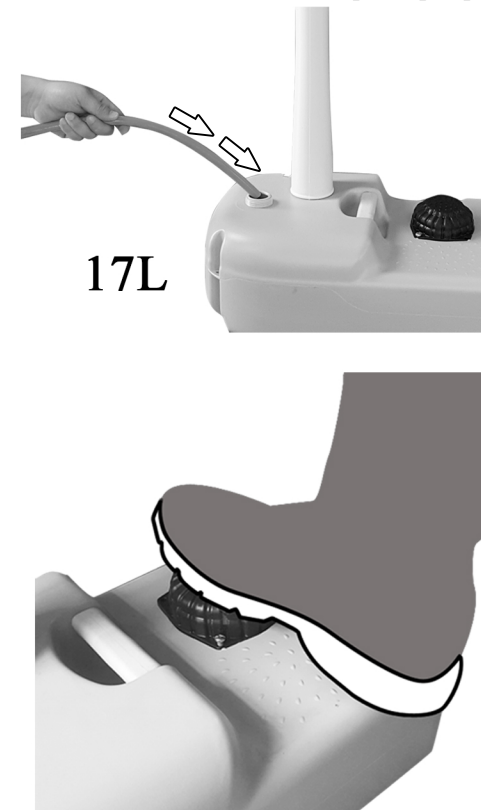
4 Fill the liquid soap into the tank and assemble the dispenser.



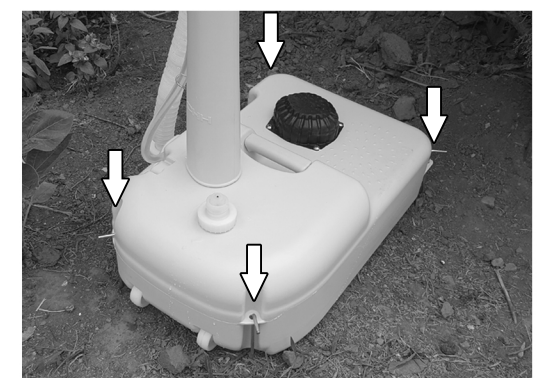
5 Screw the flexible drain hose on the washbasin.



6 Fill fresh water into base tank and step foot pump for handwash.



Equipped with multipurpose towel rack



Base tank can be fixed on ground through four holes at the corner if necessary
Pegs are sold separately, not included.