

# CONTENTS

---

Safety and care advice	<b>1</b>
Components - panels	<b>2</b>
Components - fittings	<b>3</b>
Assembly	<b>5</b>
Copyright	<b>14</b>

---

# ⚠️ SAFETY AND CARE ADVICE ⚠️

---

## PLEASE READ THESE INSTRUCTIONS CAREFULLY AND KEEP FOR FUTURE REFERENCE

- **Warning:** This unit weighs approximately 17kgs. Please lift with care.
- Check you have all the components and tools listed on pages 2 and 3.
- Remove all fittings from the plastic bags and separate them into their groups.
- Keep children and animals away from the work area, small parts could choke if swallowed.
- Make sure you have enough space to layout the parts before starting.
- Do not stand or put weight on the product, this could cause damage.
- Assemble the item as close to its final position (in the same room) as possible.

- Assemble on a soft level surface to avoid damaging the unit or your floor (use opened out unit carton).



- We do not recommend the use of power drill/drivers **for inserting screws**, as this could damage the unit. Only use hand screwdrivers.
- **Safety note:** If there is any chance of this unit being pulled over by children etc. it is recommended that the unit is secured to a wall using suitable fixings.
- Dispose of all packaging carefully and responsibly.

## CARE AND MAINTENANCE

---

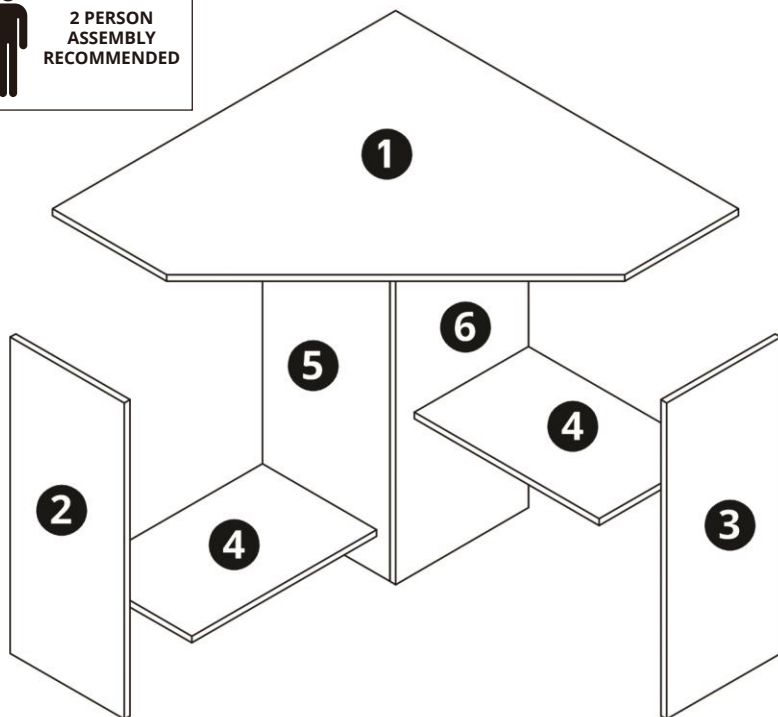
- Only clean using a damp cloth and mild detergent, do not use bleach or abrasive cleaners.
- From time to time check that there are no loose screws on this unit.

- This product should not be discarded with household waste. Take to your local authority waste disposal center.

**Note** *If required the next page can be cut out and used as reference throughout the assembly. Keep this page with these instructions for future reference.*

# COMPONENTS — PANELS

Please check you have all the panels listed below:



## PANEL LIST

<b>1</b> Top Panel, 902x902x15	x1	<b>4</b> Shelf, 520x250x15	x2
<b>2</b> Left Side Panel, 710x250x15	x1	<b>5</b> Side Panel, 710x300x15	x1
<b>3</b> Right Side Panel, 710x250x15	x1	<b>6</b> Side Panel, 710x315x15	x1



# COMPONENTS — FITTINGS

---

Please check you have all the fittings listed below:



Metal dowel x 19



Locking nut x 19



Wooden dowel x 8

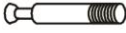



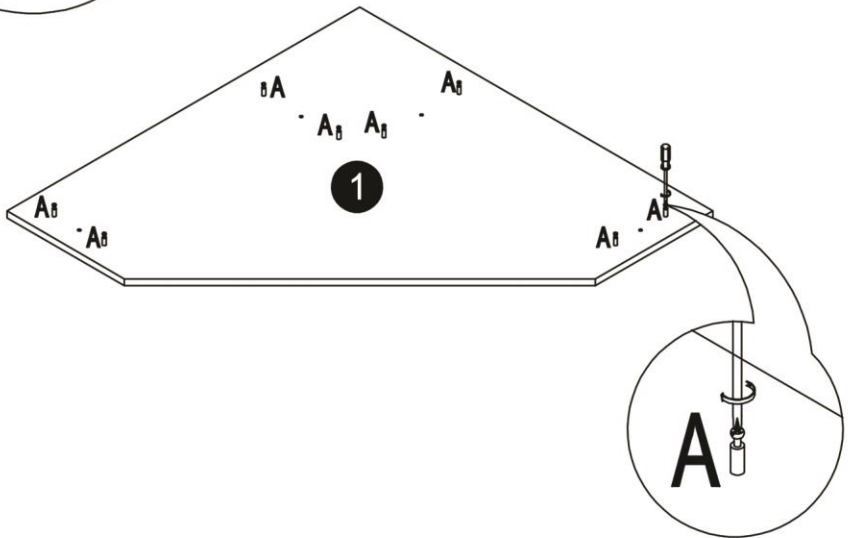
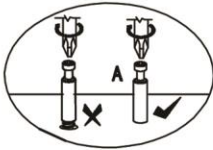
Nailed Foot x 8



# DESK ASSEMBLY

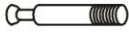


## Step 1

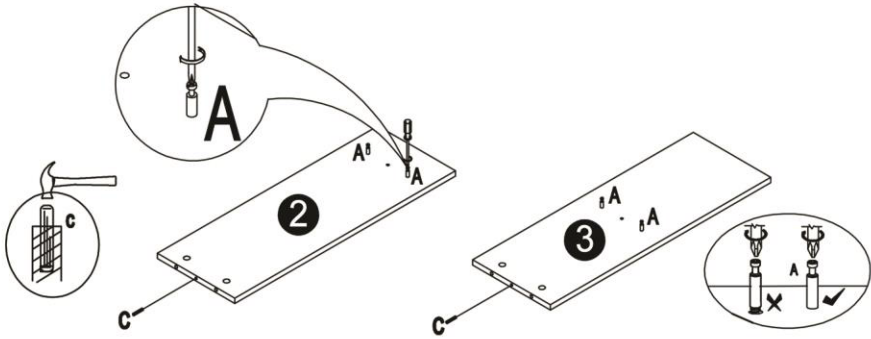
A		8	
---	---	---	---




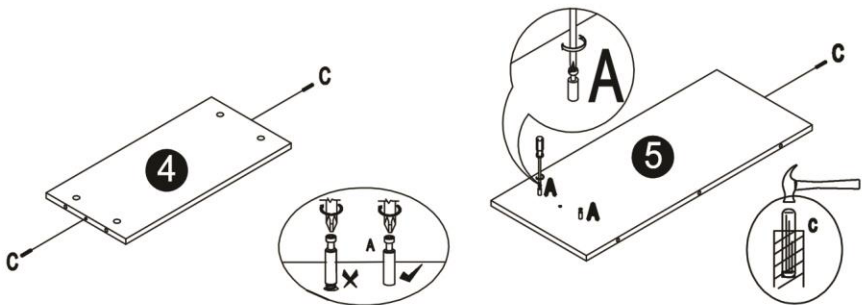
# DESK ASSEMBLY

## Step 2

A		6	
C		7	

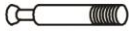




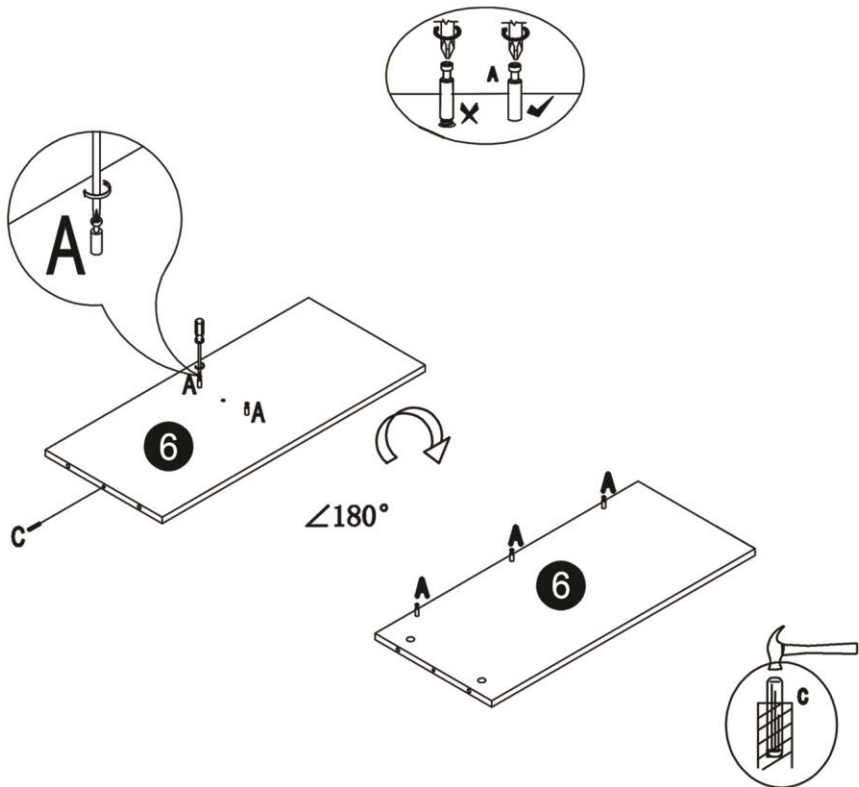
 Repeat the process for all 2 Panel **4**



# DESK ASSEMBLY





## Step 3

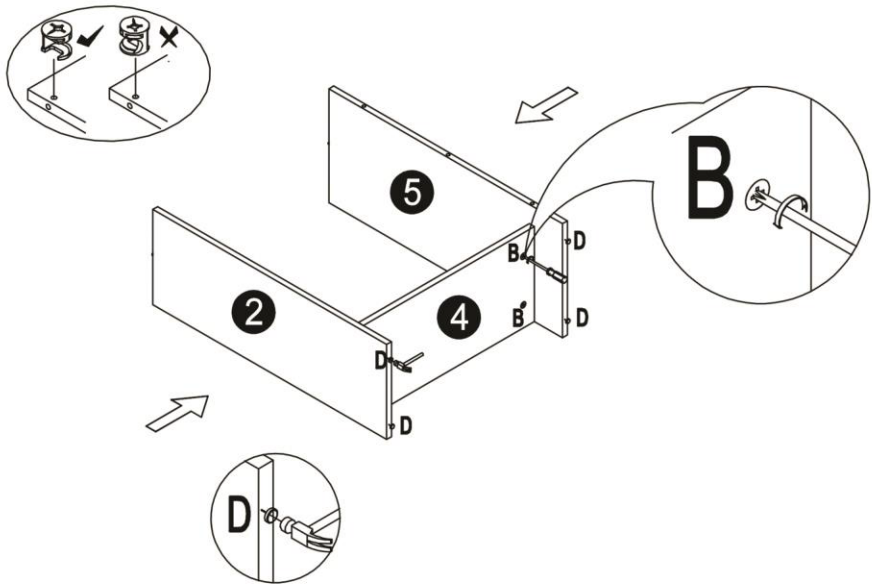
A		5	
C		1	



# DESK ASSEMBLY

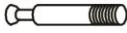



## Step 4

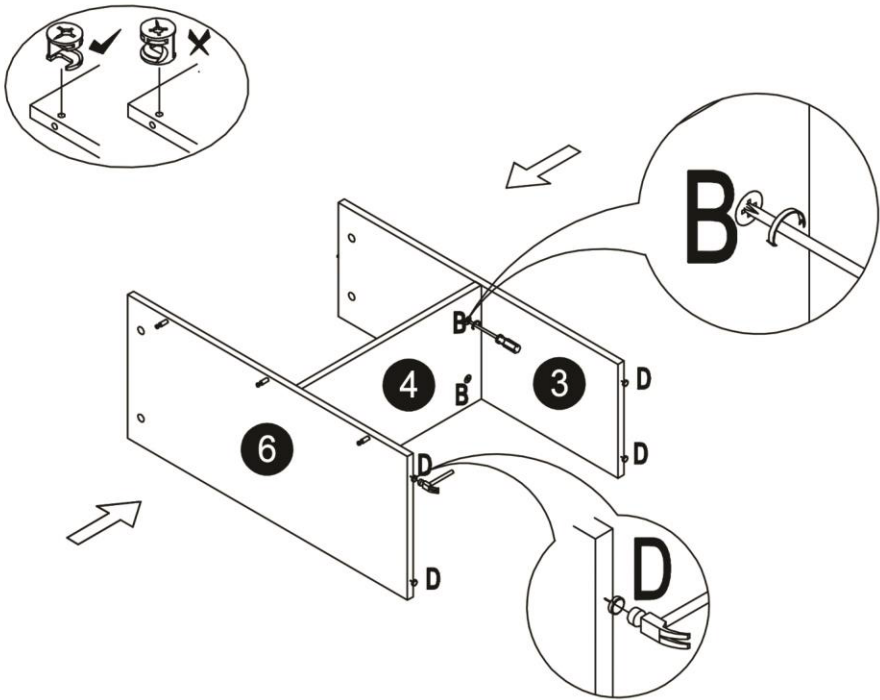
B		4	 
D		4	



# DESK ASSEMBLY

## Step 5

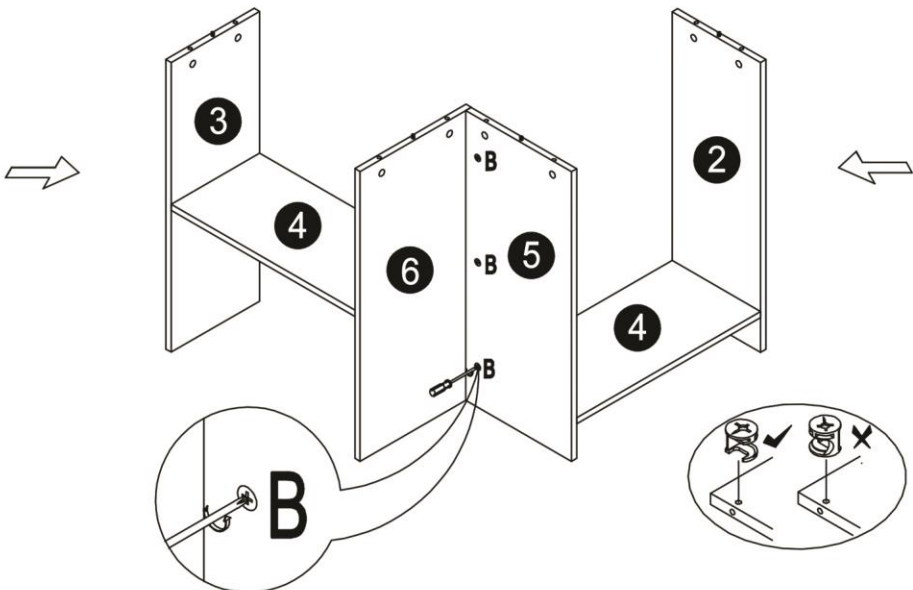
A		5	 
D		4	



# DESK ASSEMBLY

## Step 6

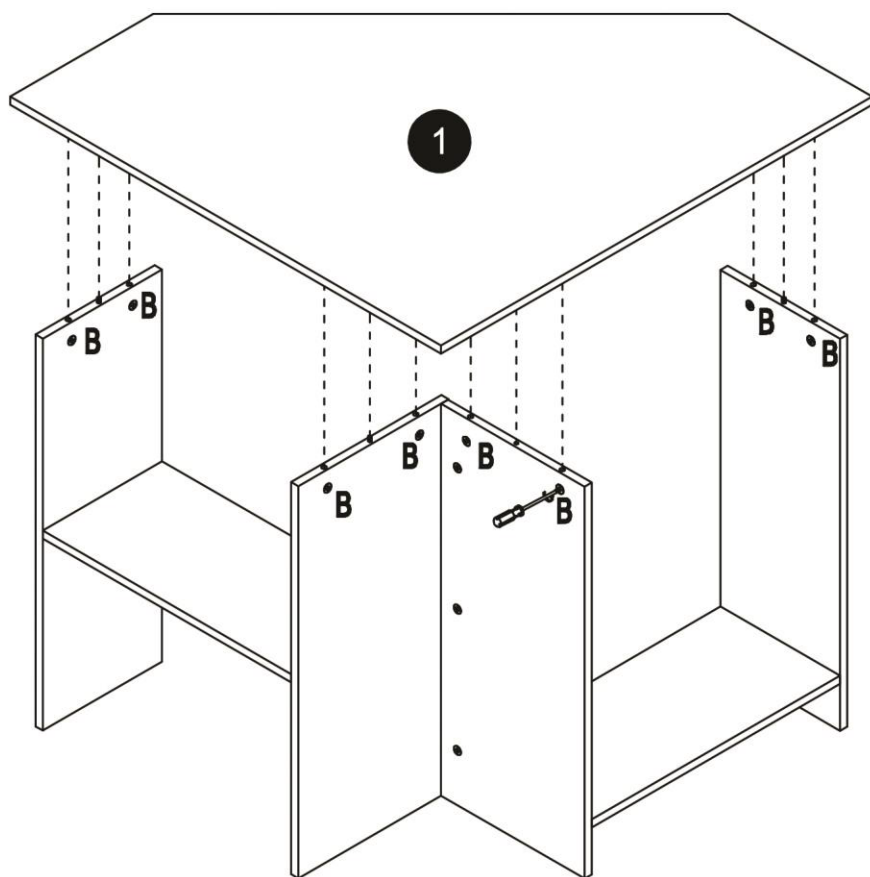
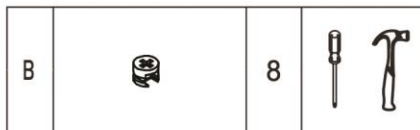
B		3		
---	---	---	---	---



# DESK ASSEMBLY

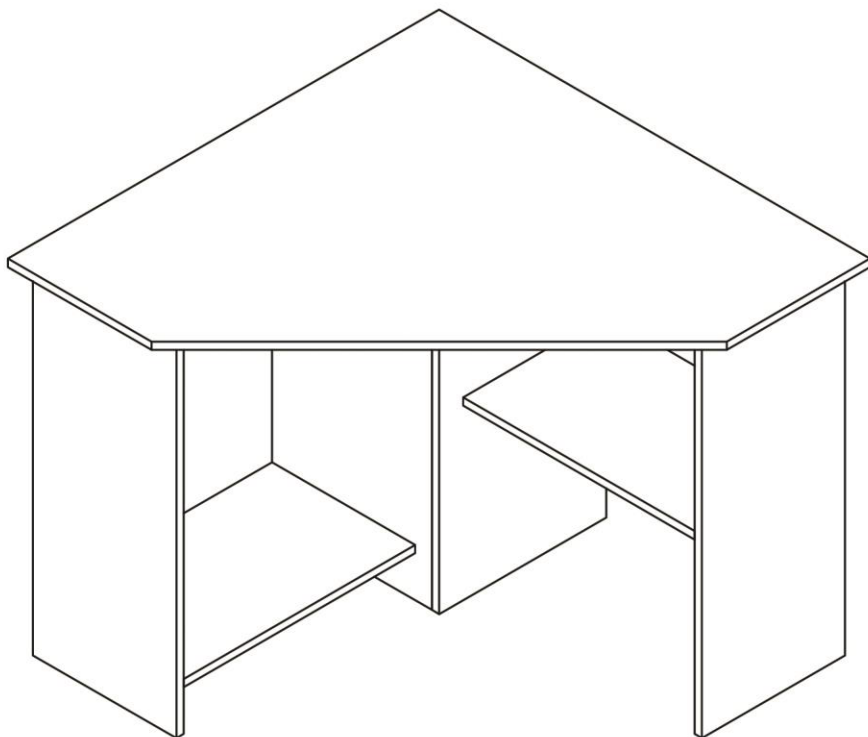
---

Step 7



# DESK ASSEMBLY

---



Congratulations! Now you have finished assembling the product. There may be some dust or hand marks on your item, we recommend using a standard wood polish to clean this product.

## **IF YOU FIND A DEFECTIVE PART**

---

We fully stock all parts and components. Any defective part can be quickly replaced. Take note of the defective part number in manual and we will arrange a replacement.