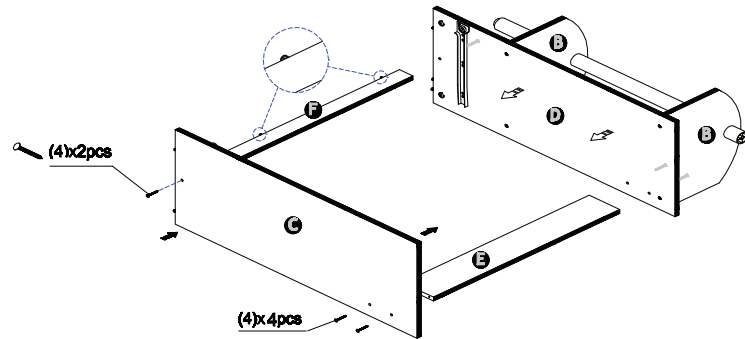


STEP 5

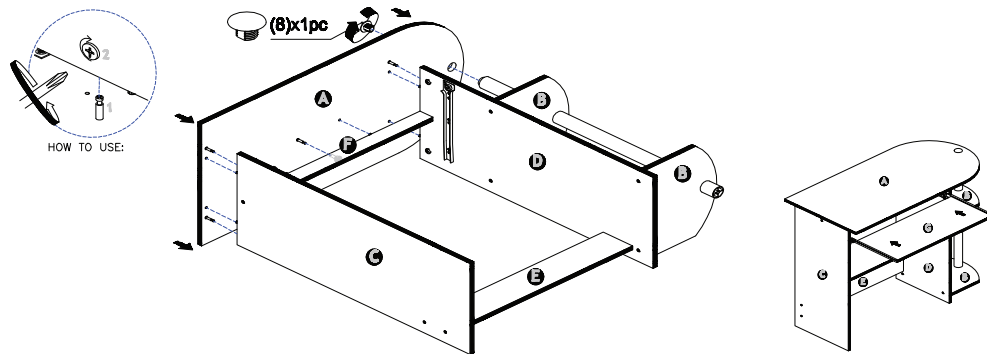
Attach Panel (C,E,F) to the assembled unit in Step 4 using Large Screw(4), as shown:



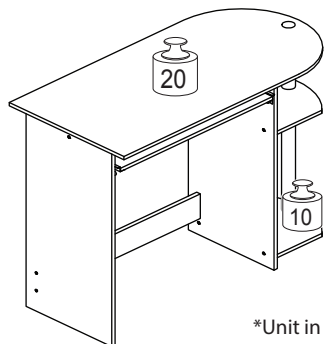
STEP 6

6.1 Attach Top Panel (A) to the assembled unit and tighten Mini Fix Cam(2).

6.2 Insert Top Cap(8) and slide in Keyboard Panel (G).



Recommended Maximum Weight



*Unit in Pound(lbs)

WARNING:

>This unit has been designed to support the maximum loads shown. Exceeding these load limits could cause sagging, instability, product collapse, and/or serious injury.

>DO NOT allow children to climb on unit.

>Put heavier items on lower shelves.

Assembly Instruction

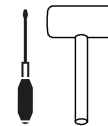
Computer Desks

00:30

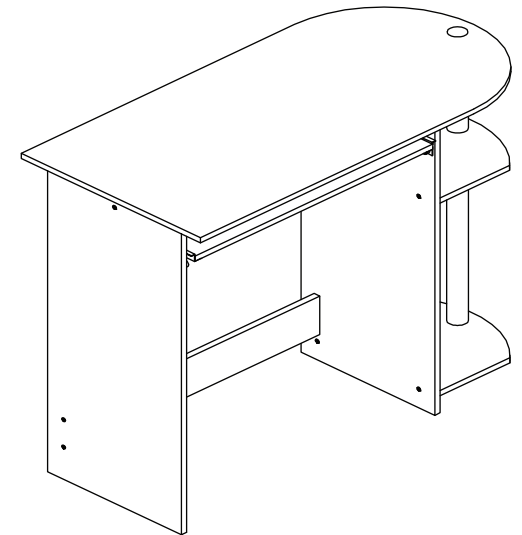
Approx. 30 minutes



Recomm. 2 Person

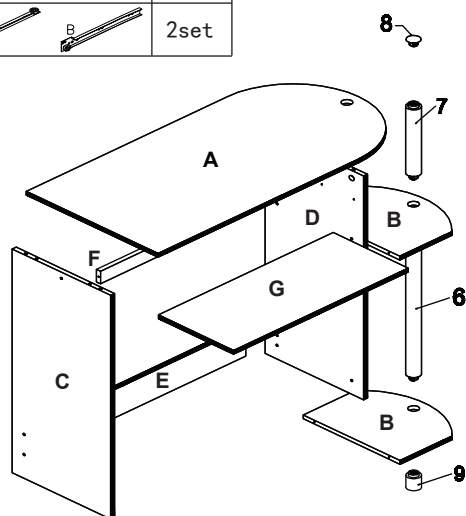


Tool Required



No	Hardware List	Qty
1	Mini Fix Bolt	5pcs
2	Mini Fix Cam	5pcs
3	Small Screw	10pcs
4	Large Screw	10pcs
5	Dowel	6pcs
6	Long Pole	1pcs
7	Short Pole	1pcs
8	Top Cap	1pcs
9	Round Leg	1pcs
10	Runner A B	2set

No	Parts List	Qty
A	Top Panel	1pcs
B	Shelf Panel	2pcs
C	Left Side Panel	1pcs
D	Right Side Panel	1pcs
E	Back Bar	1pcs
F	Top Bar	1pcs
G	Keyboard Panel	1pcs

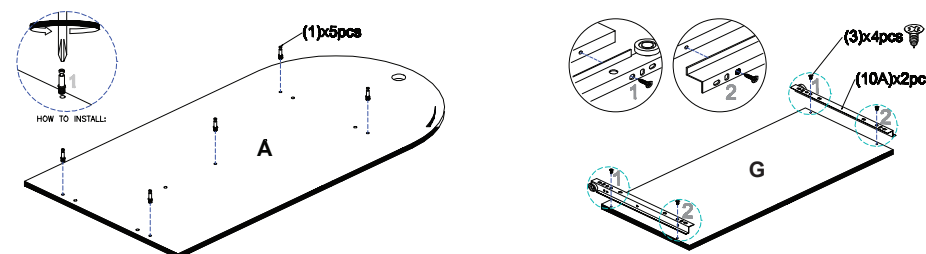


USEFUL HINTS BEFORE YOU START:

1. Read each step carefully before starting.
2. It is important that each step is performed in correct order to avoid difficulties.
3. Identify, sort and count the parts before assembly.
4. Assemble your furniture on packaging cardboard to prevent scratch or damage.
5. Clean the product with mild cleanser using soft damped cloth. Do not use harsh or abrasive cleanser.
6. Using incompatible hardware might cause damage to product.

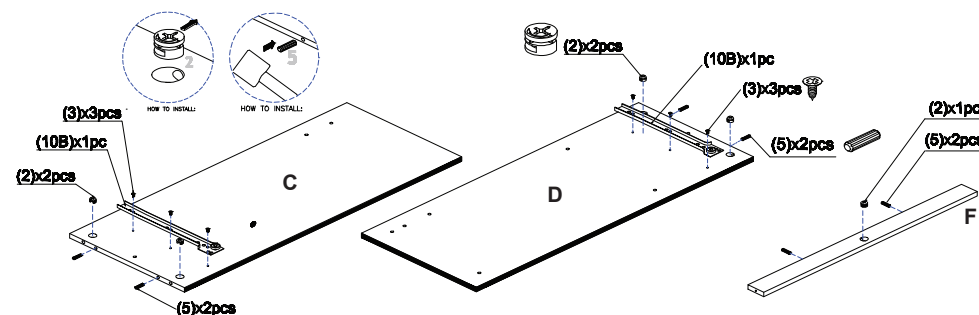
STEP 1

- 1.1 Install Mini Fix Bolt(1) on Panel (A).
- 1.2 Install Runner A(10) on Panel G with Small Screw(3).



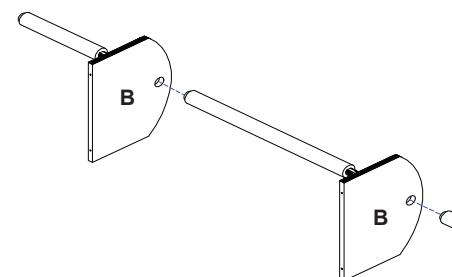
STEP 2

- 2.1 Install Runner B(10) on Panel C,D with Small Screw(3).
 - 2.2 Insert Mini Fix Cam(2) and Dowel(5) into pre-drilled holes on Panel C,D & F.
- Note: Arrow on Mini Fix Cam(2) should be pointing outward.



STEP 3

Attach Shelf Panel (B) with Pole (6&7) and Round Leg (9), as shown:



STEP 4

Attach Right Side Panel (D) to assembled unit in step 3 using Large screw (4).

