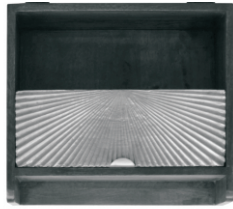


ASSEMBLY INSTRUCTIONS

ITEM DESCRIPTION : BEDSIDE



1

Reverse the Bedside top & place the leg as shown & align the leg to match the apron.



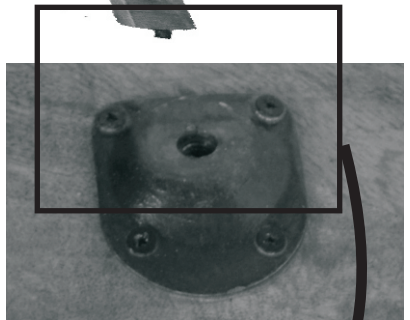
2

Twist the leg into the iron fitting slot by rotating it.



3

Fix the other legs in the similar way



4

Reverse the Bedside straight. Now your Bedside is ready for use

