

# 6 Lights Chandelier Assembly Instruction Manual

## CAUTION:

·BEFORE INSTALLING FIXTURE, MAKE SURE THE POWER TO THE CIRCUIT IS TURNED OFF AT THE MAIN FUSE BOX / CIRCUIT BREAKER UTILITY BOX.

## Important Safety Instructions:

·These instructions are provided for your safety. It is very important that they are read carefully and completely before beginning the assembly and installation of this lighting fixture.  
·We strongly recommend that a professional electrician install all direct wire fixtures.

·THIS PRODUCT MUST BE INSTALLED IN ACCORDANCE WITH THE APPLICABLE INSTALLATION CODES BY A PERSON FAMILIAR WITH THE CONSTRUCTION AND OPERATION OF THE PRODUCT AND THE HAZARDS INVOLVED.

·The lighting fixture is meant for indoor use. It must be connected only to 3-wire, single-phase electrical supply systems (provided with Ground wire or equivalent protection system).

·For your safety, it is strongly recommended that two people install the lighting fixture.

·This fixture has been rated for up to three (6) **E12 Socket 40-Watt** maximum standard incandescent light bulbs (not included) or **CFL or LED equivalent bulbs** (not included).

·To avoid the risk of fire, DO NOT EXCEED THE RECOMMENDED LAMP WATTAGE.

·The lighting fixture is meant for indoor use. DRY LOCATIONS ONLY.

·Save these instructions

## WARNING:

·To reduce the risk of fire, electrical shock or personal injury, always turn off light fixture and allow it to cool prior to replacing the light bulb.

·Do not touch bulb when fixture is turned on; do not look directly at a lit bulb.

·Keep flammable materials away from lit bulb.

·This lighting fixture no lead contains, a chemical known to the State of California to cause cancer, birth defects and other reproductive harm. Wash hands after installing, handling, cleaning or otherwise touching this light fixture.

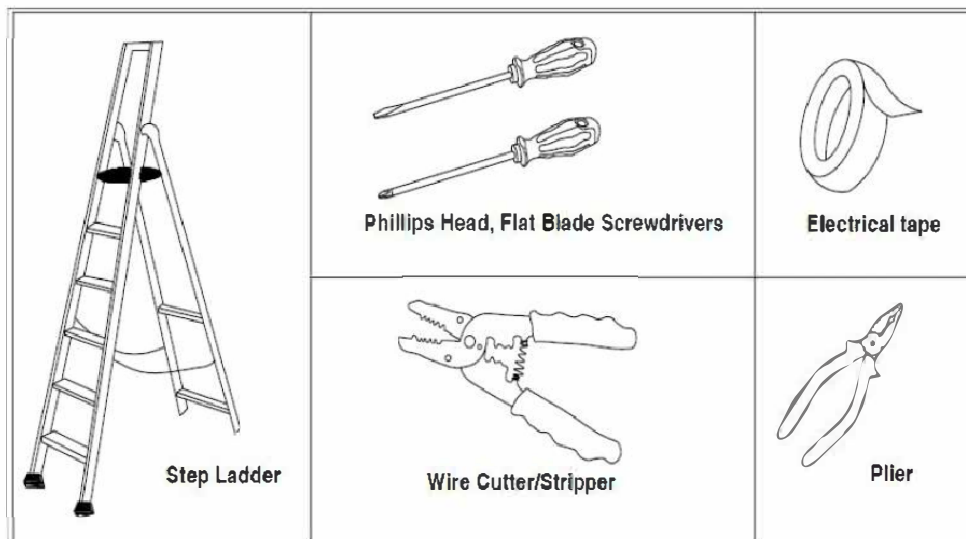
## Pre-assembly:

·Remove all parts and hardware from box along with any plastic protective packaging.

·Do not discard any contents until after assembly is complete to avoid accidentally discarding small parts or hardware.

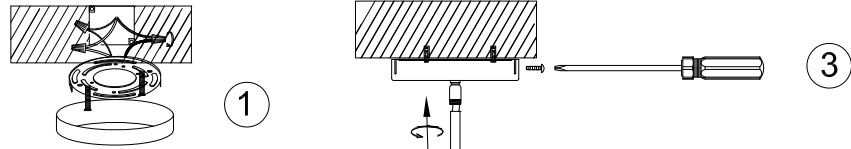
·For your safety, it is strongly recommended that two people install the lighting fixture.

## TOOLS REQUIRED (not included):



**Parts Included:**

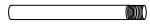
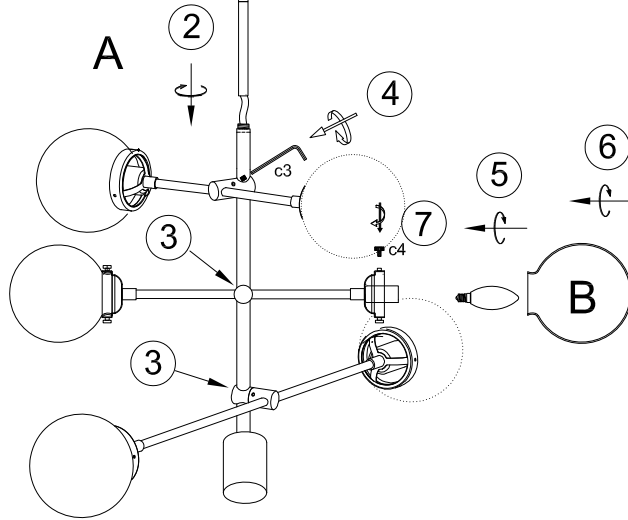
- (a.) Lamp Fitting (A) x 1
- (b.) Glass Shade (B) x 6
- (c.) Tool Kit x 1



**Tool Kit Enclosed:**

- (c1.) Plastic Wire Nut connector x 3
- (c2.) Mounting Screw x 2
- (c3.) Allen Screw Driver

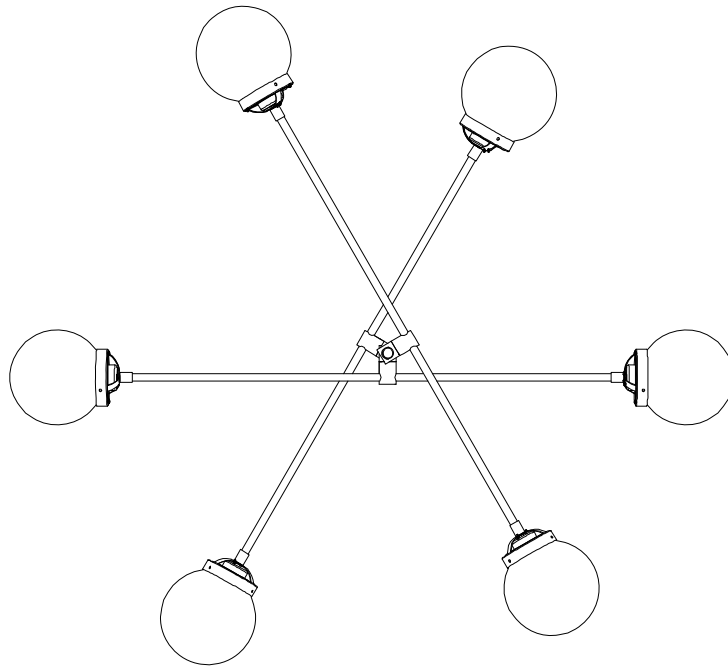
c1		x 3
c2		x 2
c3		x 1
c4		x18 +3



5.5" suspension tube x 1 pc



11" suspension tube x 2 pcs

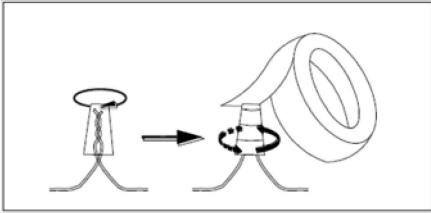


**Installation Steps:**

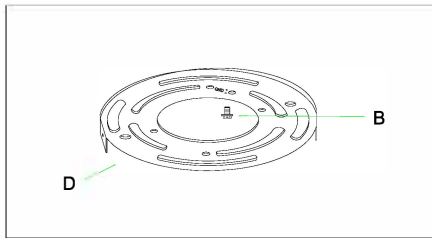
1. Fasten the mounting bracket onto the outlet box by using the outlet box screws, Ensure all supply circuit wires protrude out of the outlet box.
  2. Run the suspension tube (poles are available in two size) through the main cable.
  3. Attach the canopy to the mounting bracket and screw it by using mounting screw (c2) supplied.
  4. Adjust the arm to the right position, then secured it by using allen driver (c3) supplied.
  5. Attach the light bulb. (not include)
  6. Attach the glass shade (B) to the metal cap.
  7. Tighten the glass shade by thumb screw (c4) supplied.
- Repeat this process with all 6 of the fixture arms.

## To Make the Wire Connections:

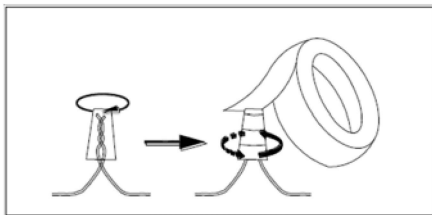
1. Gently pull the existing wire down from the ceiling junction box and allow wires to hang. The HOT or LIVE wire is usually black. The NEUTRAL wire is usually white. Check to see if there is a ground wire that is usually green or green with a yellow stripe or exposed copper metal wire. If need, use a pair of wire strippers to remove about 1/2 inch of insulation from each wire.
2. Carefully inspect the fixtures wires. The NEUTRAL FIXTURE WIRE has FINE LONGITUDINAL RIDGES running along its length. The HOT FIXTURE WIRE is SMOOTH and the BARE SILVER WIRE is the GROUND WIRE. If you have any doubt and cannot identify the power-supply wires with confidence, then we recommend that you ask an electrician and that you not continue with the installation.
3. With the help of another person to hold the weight of the fixture, attach the fixture wires to the junction box wires as shown in the illustrations.



Connect the GROUND FIXTURE WIRE to the GROUND J-BOX WIRE using the Plastic Wire Nut Connector (A) and wrap the connection with electrical tape. Be sure that no wire strands are exposed.



If the junction box DOES NOT have a GROUND WIRE, wrap the fixture's bare ground wire around the Green Ground Screw (B) and insert the screw into the Mounting Plate (D), marked as "GND", and tighten screw to secure the wire.



Connect the NEUTRAL FIXTURE WIRE to the NEUTRAL J-BOX WIRE first and then connect the HOT FIXTURE WIRE to the HOT J-BOX WIRE using the Plastic Wire Nut Connectors (A). Wrap these connections with electrical tape. Be sure that no wire strands are exposed.

## NOTE:

**IT IS IMPERATIVE THAT THE JUNCTION BOX IN YOUR HOME BE PROPERLY GROUNDED!  
DO NOT REVERSE THE HOT AND NEUTRAL CONNECTIONS OR SAFETY WILL BE COMPROMISED.**

4. Check the wiring connections and if all looks good, gently tuck the wire connections neatly into the ceiling junction box.

## Care Instructions:

- Wipe clean with a soft, dry cloth or static duster.
- Always avoid the use of harsh chemicals or abrasive cleaners as they may cause damage the fixture's finish.

*Thanks for your purchase.*

*Any questions please don't hesitate to contact us, we'll resolve all your problem ASAP. Customers are always the best teachers for us to keep growing!*

*Should you have any questions or concerns, please do not hesitate to contact us.*