



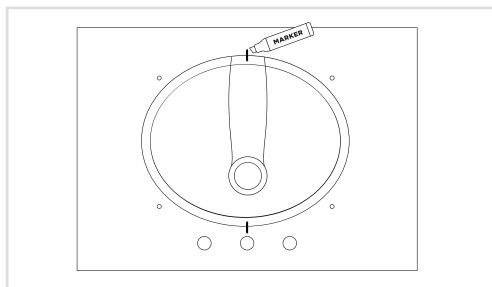


INSTALLATION GUIDE

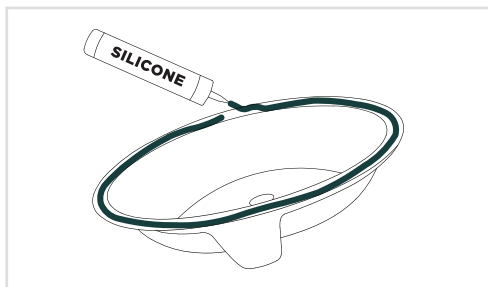
STOP, please make sure the cabinet is level before installing the countertop

INCLUDED	NEEDED	HARDWARE	
<ul style="list-style-type: none">• Base cabinet• Countertop• Sink basin• Backsplash• Hardware	<ul style="list-style-type: none">• Permanent marker• Caulking gun• Power Drill• Drywall Screws	<p data-bbox="684 277 703 296">A</p>  <p data-bbox="703 331 779 351">Bolts (4)</p> <p data-bbox="684 389 703 408">C</p>  <p data-bbox="703 427 801 446">Washers (4)</p>	<p data-bbox="878 277 897 296">B</p>  <p data-bbox="897 309 1016 328">Wing nuts (4)</p> <p data-bbox="878 389 897 408">D</p>  <p data-bbox="866 427 1050 446">Undermount clips (4)</p>



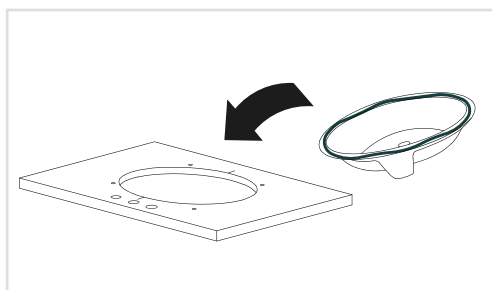
STEP 1 - PLACE & TRACE

Place the sink basin on the bottom of the countertop, making sure to center over the opening. Draw guide lines on the countertop and the basin in two locations.



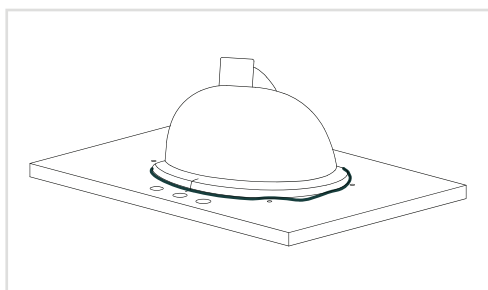
STEP 2 - PREPARE SINK BASIN

Using a caulking gun, apply a heavy amount of silicone of your choice on the top side of the sink basin edge.



STEP 3 - FLIP & SET IN PLACE

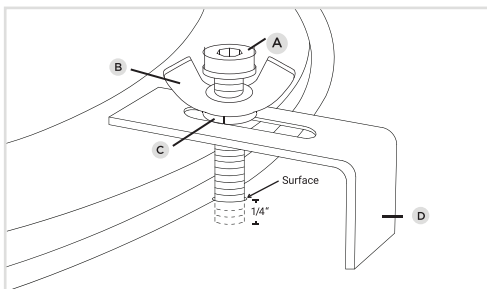
Carefully flip the sink basin over and place it so the guide lines match up in both locations.



STEP 4 - DRY & SET

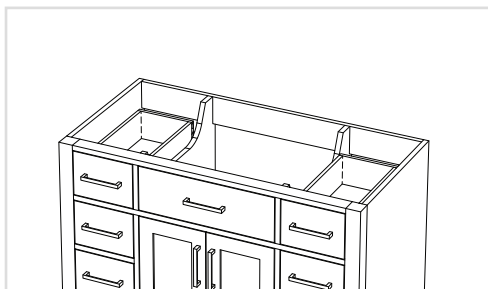
Press down on the sink basin to seal the silicone. Remove any excess. Follow dry time recommendation found on your product, typically 12 to 24 hours.

INSTALLATION GUIDE



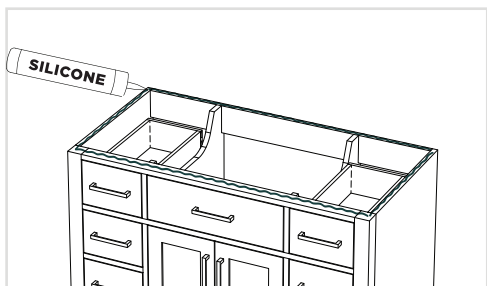
STEP 5 - ATTACH UNDERMOUNT CLIPS

Please tighten Bolt (A) into wing nut (B) slide on washer (C) and guide through Under-mount clip (D) opening into threaded bolt hole in the countertop. ONLY-Hand Tighten Bolt (A) to a depth of about 1/4" below countertop surface. Then secure the Sink with the under-mount clip (D) by Tightening wing nut (B) only



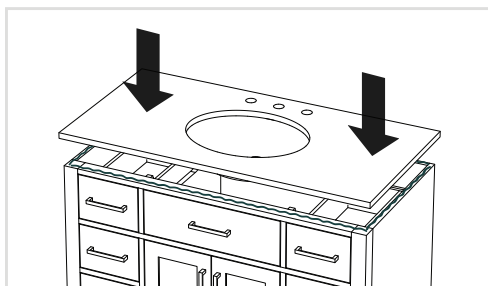
STEP 6 - ATTACH BASE CABINET TO WALL

Place cabinet in desired location and determine where the wall studs are.



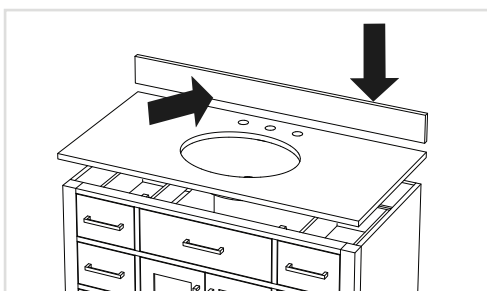
STEP 7 - PREPARE BASE CABINET

Using a caulking gun, apply silicone around the top of the base cabinet.



STEP 8 - SET COUNTERTOP IN PLACE

Carefully place the countertop, with the sink attached, onto the cabinet and press down firmly. Wipe away any excess silicone immediately.



STEP 9 - SET BACKSPLASH

After the vanity is in place, use a caulking gun to apply silicone to the back and bottom unfinished sides of the backsplash. Press firmly down and back to set in place. Remove any excess silicone.