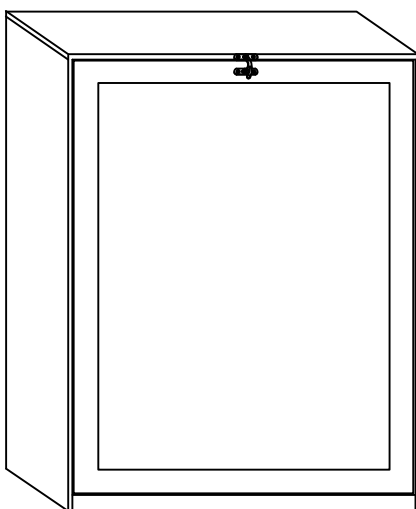


ASSEMBLY INSTRUCTIONS

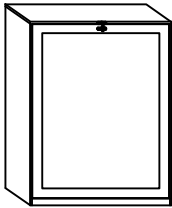
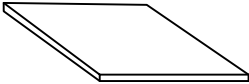
Foldable Wall Mount Desk





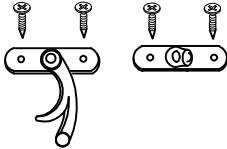
NOTE TO CUSTOMERS:

- For ease and speed of assembly we recommend that before you commence each step of the assembly that you identify all the parts required to complete that step.
- We recommend that where possible you allow sufficient space to assemble the item as close as possible to the place where it will be once assembled.
- For the protection of your furniture we recommend that the product is placed on protected surfaces during assembly to prevent any damage.
- During assembly do not over tighten, as this may damage the product.
- Please ensure you retain all the product packaging until the item completely assembled.
- Please periodically check all fittings and re-tighten as necessary.
- Please never allow any liquids to remain on your furniture as absorption can cause the wood to warp or finish to de-laminate.
- It is recommended that this item should be assembled by two adults.

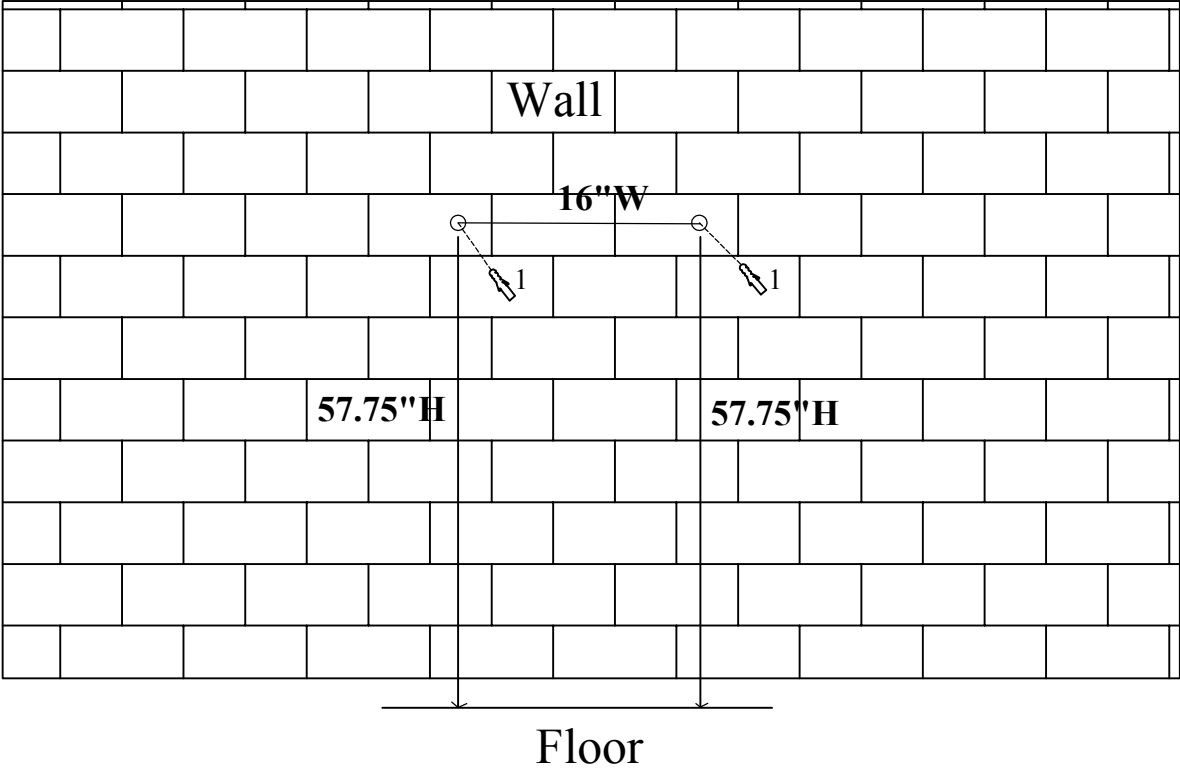
Part List

A.	Quantity of 1	B.	Quantity of 2
			
Desk		Shelf	

Hardware List

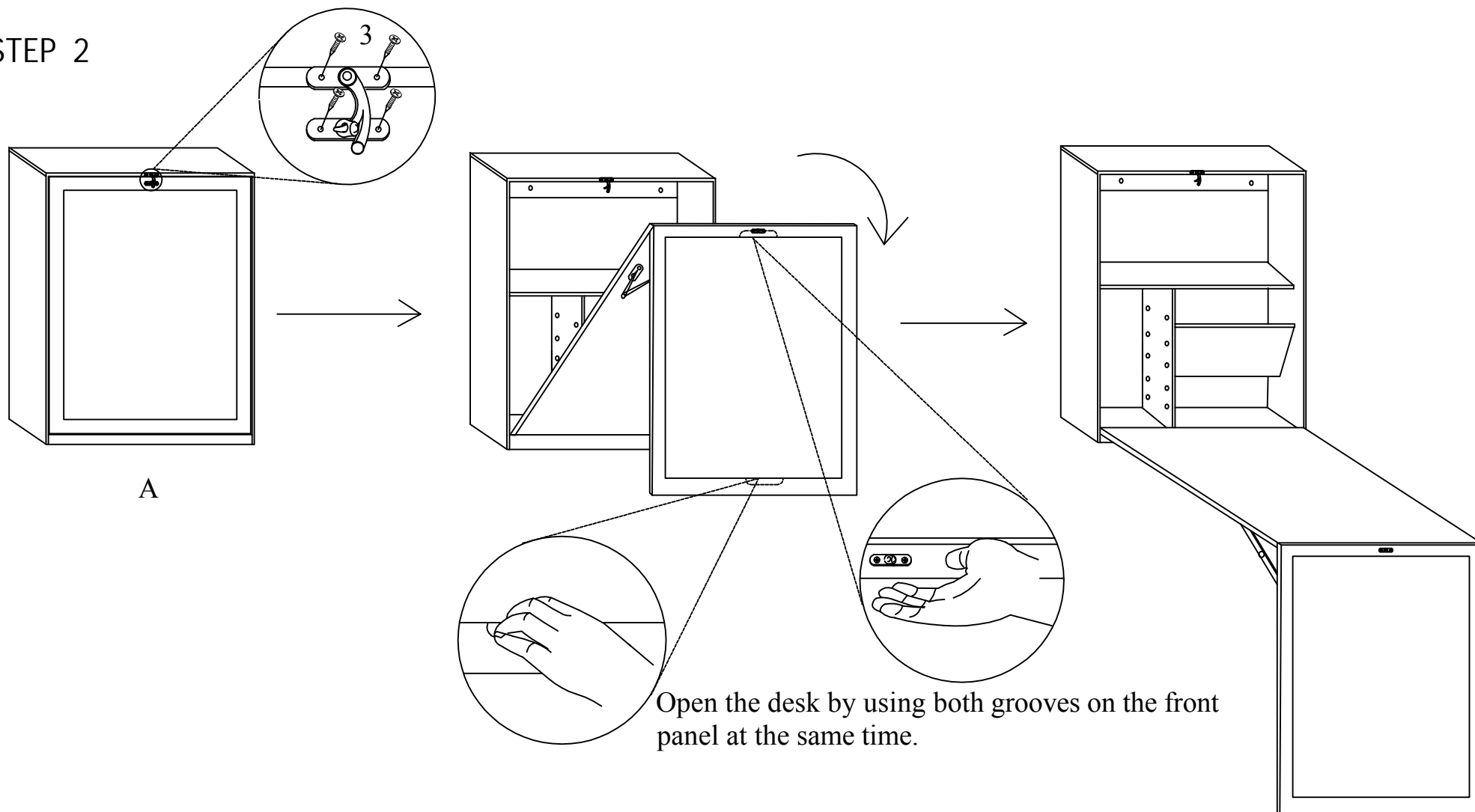
1.	Quantity of 2	2.	Quantity of 8	3.	Quantity of 1
					
Anchor & Flat Washser & Screw		Shelf Support		safety lock	

STEP 1



For your safety please insert Anchors (1) into the wall as above drawing shown.

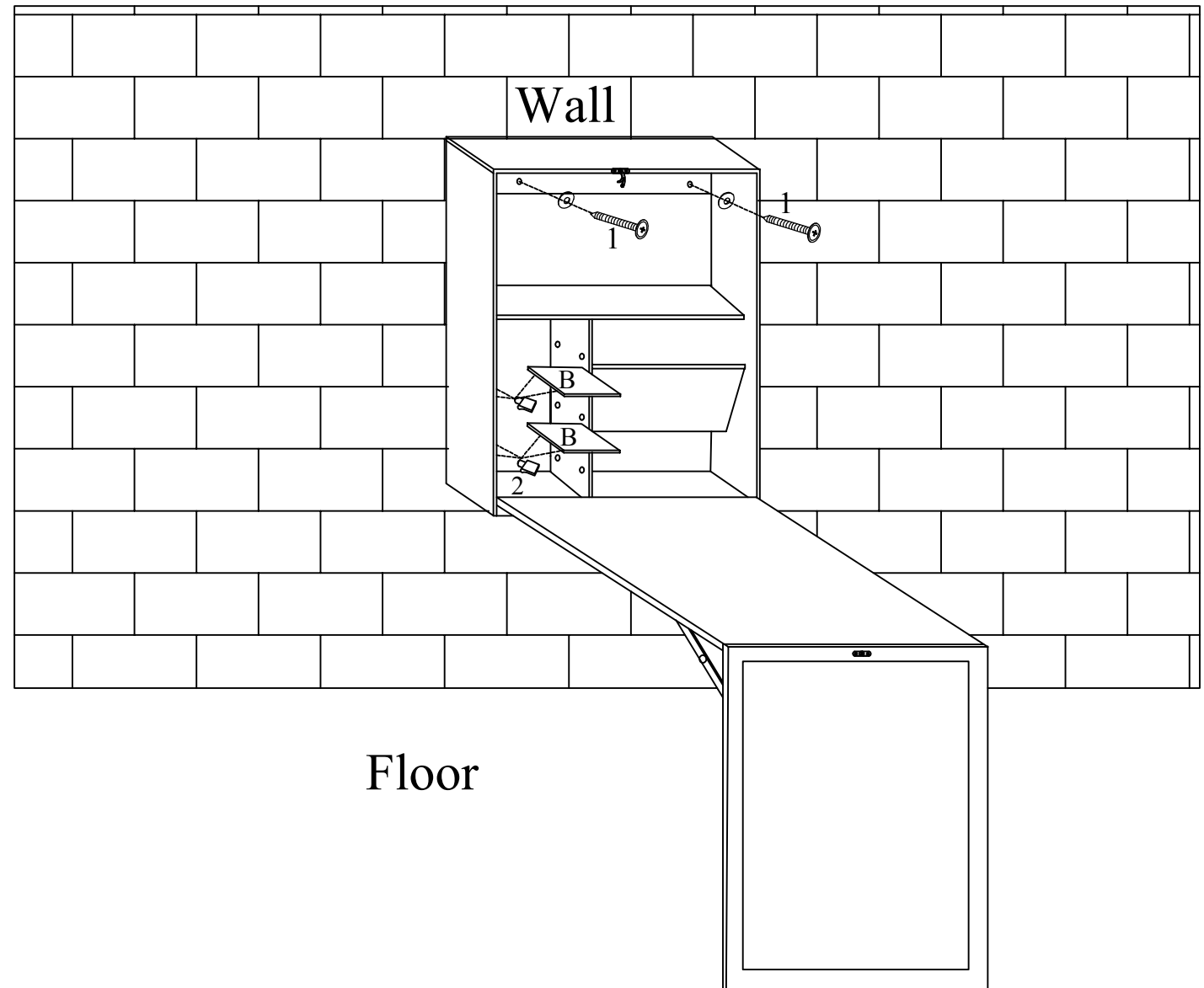
STEP 2



Open the desk by using both grooves on the front panel at the same time.

1. Attach Safety Lock (3) to Desk (A) using included Screws (3).
 2. Open Desk (A) carefully as above drawing shown, open the desk by using both grooves on the front panel at the same time.
- NOTE: It is recommended that this desk should be assembled by two persons.

STEP 3

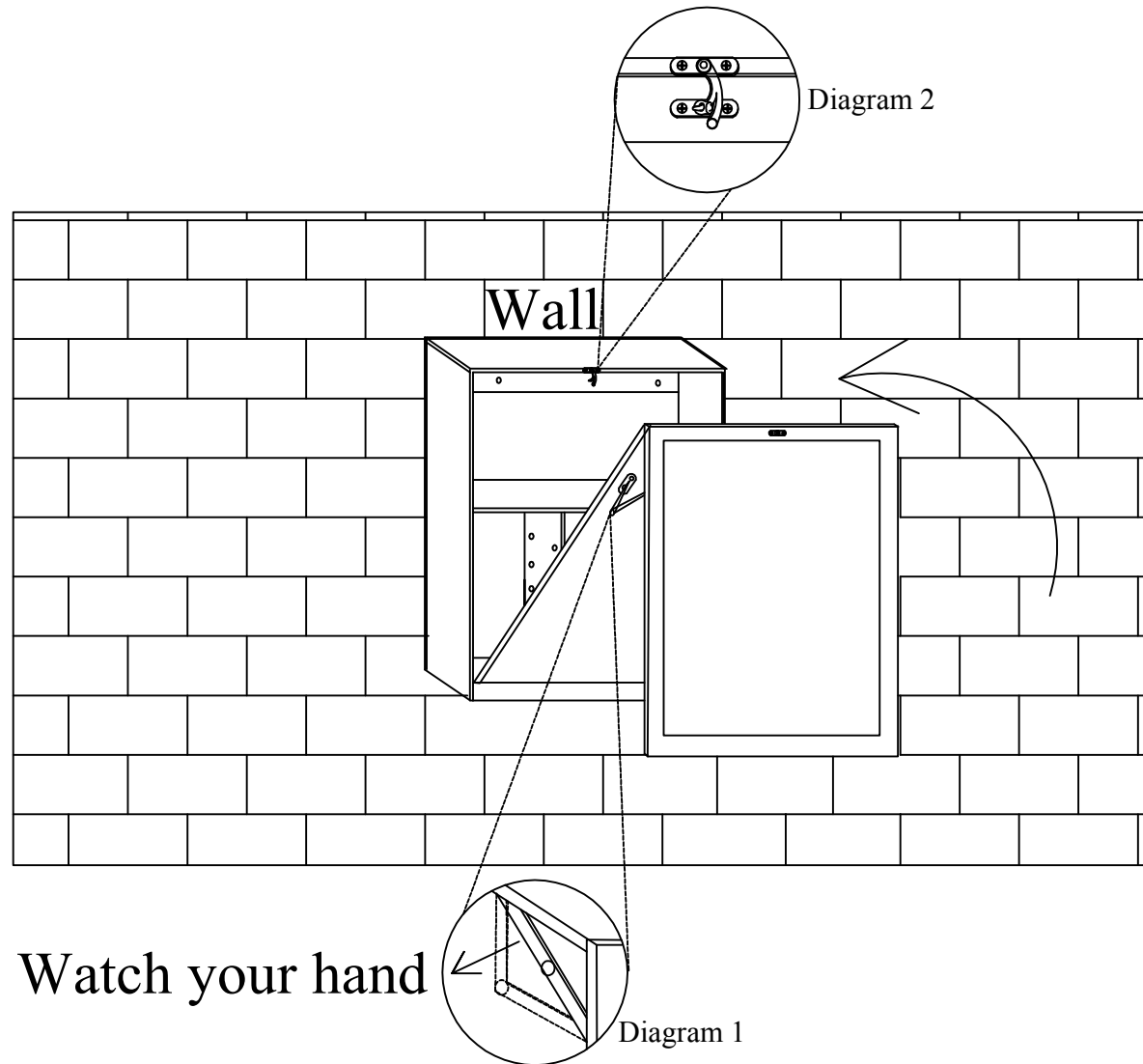


1. Assemble Desk (A) to the wall using Screws and Flat Washers (1) as above drawing shown.
2. Insert Shelf Supports (2) into the holes on Desk (A), then put Shelves (B) on top of Shelf Supports (2).

STEP 4

Warning:

1. Max load capacity 100lbs.
2. Only use chalk to write on the blackboard.
3. Only use whiteboard marker to write on the whiteboard.



When closing the desk, unlock the safety hinge by pushing in slightly(see diagram 1) , then fold the desk back and lock with top safety lock(see diagram 2).
NOTE: Please watch your hand when pushing the safety hinge.