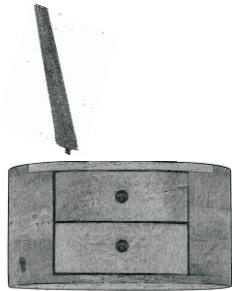


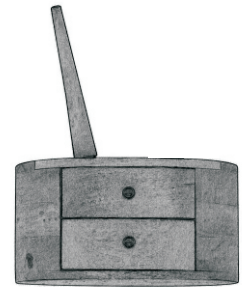
# ASSEMBLY INSTRUCTION

## ITEM DESCRIPTION : 2 DRAWER BEDSIDE



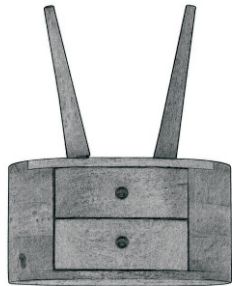
1

Reverse the bedside top & place the leg as shown & align the leg to match the apron.



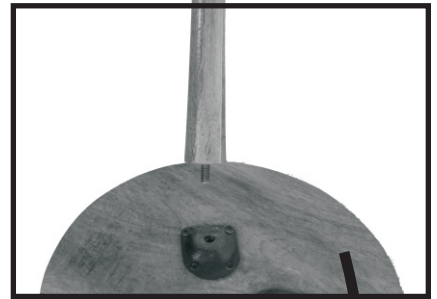
Twist the leg into the iron fitting slot by rotating it.

2



3

Fix the other leg in the similar way



4

Reverse the bedside straight. Now your bedside is ready for use

