

# 1 DRAWER NIGHTSTAND

## Assembly Instruction

### A. Component :

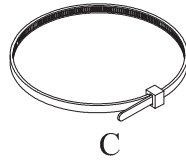
1. 1 DrawerNightstand

Qty

1 Pc



A



C



B



D



E

### B. Hardware :

Qty

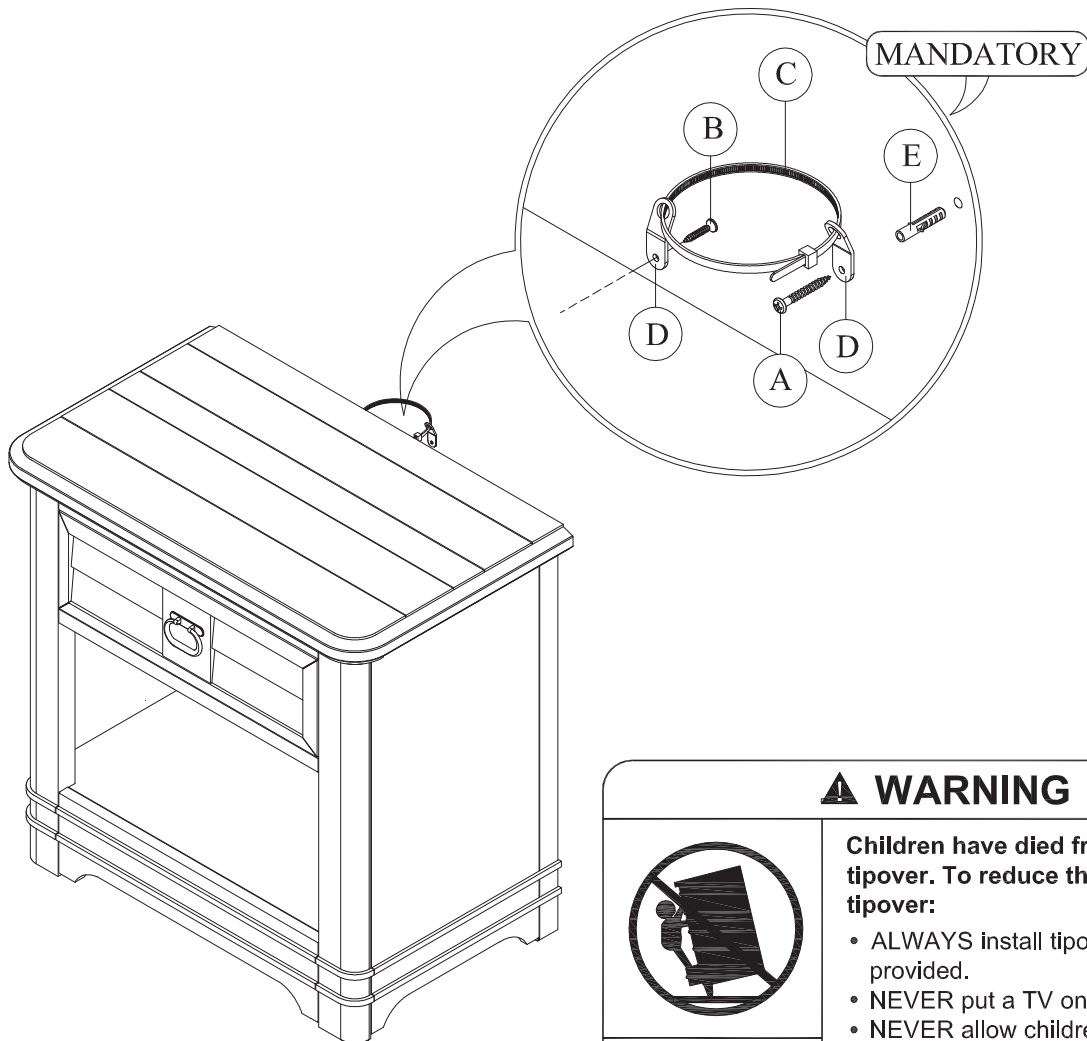
A. Screw Ø8 x 2" 1 Pc

B. Screw Ø8 x 5/8" 1 Pc

C. Restrain Strap 1 Pc

D. Metal Tabs 2 Pcs

E. Plastic Wall Anchor 1 Pc



### ⚠ WARNING



**Children have died from furniture tipover. To reduce the risk of furniture tipover:**

- ALWAYS install tipover restraint provided.
- NEVER put a TV on this product.
- NEVER allow children to stand, climb or hang on drawers, doors, or shelves.
- NEVER open more than one drawer at a time.
- Place heaviest items in the lowest drawers.



*This is permanent label.  
Do not remove !*