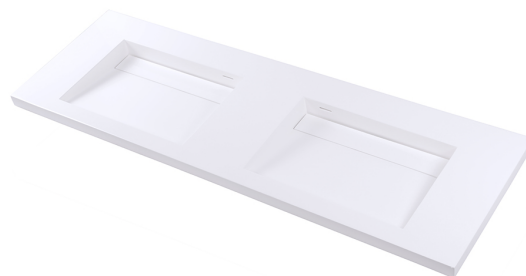


Specifications:

Installation:	Wall-mount or vanity-top
Exterior Dimensions:	56" w x 18" d x 5" h
Material:	Solid surface
Weight:	Matte white - 72 lbs Gloss white - 72 lbs
Overflow:	Yes
Finishes:	001M - Matte white 001G - Gloss white
Faucet Holes:	00 - no hole 01 - one centered hole 02 - two hole - center and right, 4" spread 03 - three hole, 8" spread
Cutout Size:	10" x 8" (template available upon request)
Faucet Hole Size:	Ø 1 3/8"
Drain Hole Size:	Ø 1 3/4"



Features:

- Solid surface double-bowl sink with overflow
- Decorative drain cover
- Material is heat, stain, scratch, chemical, and impact resistant
- Unfinished bottom
- Finished back
- Requires s.steel brackets #5302-BR for wall-mount installation without vanity
- Most standard American drains can also be used

Codes + Standards:

- Meets and exceeds applicable national codes and standards



compliant when installed to specific requirements of this regulation

Recommended Items:

- Furniture
 - LIB-W-56 - Wall-mount or vanity-top double sink made of solid surface with an overflow and decorative drain cover
- European drain with overflow
 - 7100-18OF

