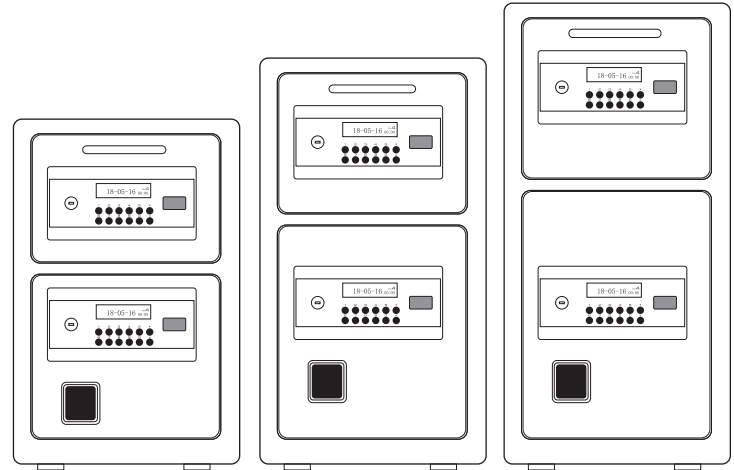
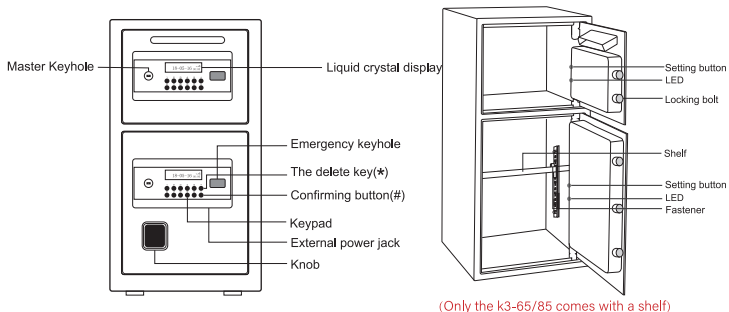


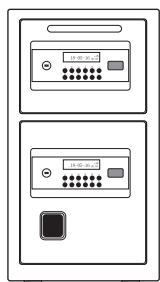
# Instruction Manual

Suitable for K3-65/75/85





(Only the k3-65/85 comes with a shelf)



Safe box \*1



Instruction Manual\*1



Emergency battery box\*1



Emergency key\*4



Expansion screws\*6



Foat mat \*4



Master key\*4

## POWER AND VOLTAGE INDICATION

- 1.Power supply: use four AA 1.5V batteries. When the voltage is full, the solid battery symbol is displayed. When the voltage is undervoltage, it displays a hollow battery symbol. The screen displays "LO-BATT" . It reminds user to replace the battery.
- 2.Undervoltage reminder: 4.5±0.3V quiescent current: <20uA Maximum current: <350mA
- 3.If you forget the password, remove the key cover and use the emergency key to open the door, you can long press the setting button on the inside of the door to reset the password, the default password is **1234** and **123456**.

| Malfunction                          | Cause  | Solution   |
|--------------------------------------|--|--|
| The installed batteries doesn't work | Battery drained  | Replace with new battery   |
|                                      | Electrode reversed   | Put the battery in the correct position                                |
| Scratches on the panel and handle    | The protective film is scratched and not torn off                      | Tear off the protective film   |
| Can't open with password             | The master key is not pulled out horizontally                          | Reinsert the key and pull it out horizontally                          |
|                                      | Wrong password   | Please reset your password   |
| Door won't close                     | There is an obstacle in the middle of the latch or behind the door     | Close the door after clearing the obstacle                             |
| Unlocked but the door won't open     | The key is not turned to the specified position                        | After turning the key to the specified position, turn the knob to open |
|                                      | The knob is not be turned within 5 seconds after entering the password | Open the door within 5 seconds after entering the password             |
| Cannot be locked                     | The key was not pulled out   | Lock the door after removing the key                                   |
| LED won't light up                   | Use the key to open the safe   | Use the password to open the safe                                      |

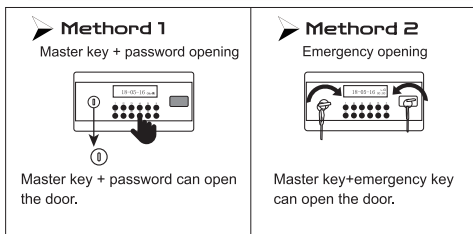
## Maintenance

1. If you do not use the safe for a long time, please take out the battery in the safe to prevent the battery fluid from leaking and damaging the safe.
2. Keep your keys and emergency battery box safe, which can be opened when the safe is out of power or if you forget your password.
- 3.Store the safe in a cool, backlit place.
- 4.Do not wipe the safe with corrosive chemical solvents, use a clean rag to wipe with a little cleaning agent.

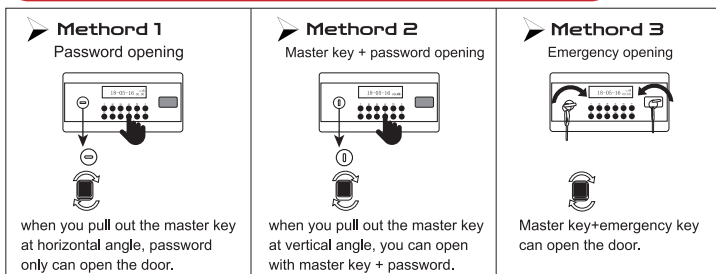
## DOOR OPENING INSTRUCTION

1. After setting the password, enter the "#" key once, then enter the correct password, and "OPEN" will be displayed on the screen, you can open the door within 7 seconds.
2. If the password is incorrect, it will display "Error" and switch to the waiting state again. If the password is entered incorrectly three times, it will alarm for 1 minute, enter the correct password to cancel the alarm, otherwise the alarm will automatically stop after one minute.
3. The "\*" key is the clear key, which can be entered to clear an incorrect number.
4. Press "#" once, and then press "\*" again, the entered password will be replaced by "0" instead of numbers. it will automatically recover after opening the door.

## TWO WAYS TO OPEN THE UPPER DOOR



## THREE WAYS TO OPEN THE BOTTOM DOOR



## DATE SETTING

Press the "\*" key once in the off-screen state to start adjusting the year, month, date, time. When you adjust the date and time, you should complete the whole process from year to time, then a battery icon will be displayed, which means successful adjustment. Or it will not be saved.

## ALARM FUNCTION

1. After 3 consecutive times of wrong password, your safe will activate the alarm system, the alarm will sound, then enter the correct password and the alarm will be cancelled.
  2. Under the off screen state, press "0", the alarm system will be activated. If the box is shaken or violently hit, it will give an alarm immediately for one minute, at this point, enter the correct password to stop the alarm.
- ▲ Note: When the door is opened, the alarm is turned off and needs to be turned on again.

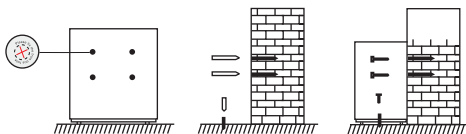
## RESET THE SYSTEM

Keep pressing the setting button until you hear a long beep. The right indicator will flash once, indicating that the reset has been successful. At this point, all passwords will be invalid and need to be reset.

▲ Note:

1. Default password is **1234** and **123456**.
2. Default date: 00-01- 01, Saturday, 00 hours 00 minutes 00 seconds.

## MOUNT THE SAFE



### Step1:

Place the safe at the installation place(Wall or floor), Mark the drilling spots on the wall/floor from the inside pre-drilled holes.

### Step2:

Remove the safe and drill a about 10 mm hole in the wall or floor with drill bit.

### Step3:

Position the safe in place and install screws through the safe into the holes. Tighten screws.

▲ Note: Different modes have different numbers of pre-drilled holes.

This safe has 6 pre-drilled holes, 4 pre-drilled holes in the back and 2 pre-drilled holes in the bottom, you can mount the safe on the wall or floor according to your needs.

## FIRST OPENING

▲ Note: Please use the master key + emergency key to open the safe for the first time. The operation is as follows:

|  |  |   |  |
|--|--|---|--|
| 1. Left slide the keyhole cover to expose the master keyhole. Press the right edge of the emergency keyhole cover. |  | 4.2. Turn the knob clockwise to open the <b>bottom</b> door for the first time.   |  |
| 2. Insert the master key into the keyhole, turn clockwise to the limit.  |  | 5. Remove the internal battery case cover and install 4 AA batteries at the right polarity. The system will be powered on.  |  |
| 3. Insert the emergency key into the emergency keyhole and turn counterclockwise to the limit.                     |  | 6. Weak current or power off. There are two ways of emergency opening.<br>1) Adopting emergency key + master key.<br>2) Using emergency battery box (Install four AA alkaline batteries, insert external power jack, the system will be energized). |  |
| 4.1. Drag the emergency key to open the <b>upper</b> door for the first time.                                      |  | Note: 1.Rechargeable battery is not recommended as it may destroy the internal electronic components of your safe.<br>2. please use brand new batteries, do not mix used batteries with new batteries.  |  |

## SET THE FIRST PASSWORD

1. Short press the setting button, the screen will light up and display "- - -", indicating that the password can be set.
2. After inputting any 1-8 digit password, press "#" to confirm, and the screen will display "IN", meaning the password is entered successfully.

▲ Testing the password before you close the door.

## SET THE SECOND PASSWORD

1. Enter "#", the screen will light up and display "- - -", enter "0" twice, and then short press the setting button, indicating that the password can be set.
2. After inputting any 1-8 digit password, press "#" to confirm, and the screen will display "IN", meaning the password is entered successfully.

▲ Test the password before you close the door.

## WARRANTY

We are committed to building high quality products and will make every effort to ensure our products are free from any defects. We guarantee your safe will be free of defects in materials or workmanship for a period of one year from the date of original. This warranty does not cover abuse, misuse, use in any manner for which is not designed, neglect, modification, damage in advertently caused by the owner; accidents, and/or tampering.

If you safe is determined to be defective and we are responsible for the cause we will have it repaired at our expense, or we will send a new replacement at no cost to you. You will be required to return your existing unit as well as all included accessories to us, prior to replacement of the defective unit along with your order of purchase.

If it is determined your safe needs to be returned, our customer support team will provide you with a return detail.

## CATALOGUE

|   |     |
|---|-----|
| Warnings .....                          | 2   |
| Box Contents .....                      | 3   |
| Set Up the Code .....                   | 4-5 |
| Date Setting and Alarm Function.....    | 6   |
| Bolting Down Your Safe .....            | 7   |
| Troubleshooting and Factory Reset ..... | 8   |
| Warranty .....                          | 9   |

## WARNINGS

1. Do not lock the emergency key or emergency battery box into your safe.
2. If the safe box is not used for a long time, the battery should be removed to prevent leakage of liquid from damaging the electronic system.
3. Purchase 4 AA batteries in advance, this safe does not contain batteries.
4. There are protective films on the knob and LCD screen. You can remove or keep it according to your needs.