

LED 5/6" DOWN LIGHT INSTALLATION INSTRUCTIONS

SURFACE MOUNT

Please read carefully and save these instructions, as you may need them at a later date.

GENERAL: ALL ELECTRICAL CONNECTIONS MUST BE IN ACCORDANCE WITH LOCAL AND NATIONAL ELECTRICAL CODE (N.E.C.) STANDARDS. IF YOU ARE UNFAMILIAR WITH PROPER ELECTRICAL WIRING CONNECTIONS OBTAIN THE SERVICES OF A QUALIFIED ELECTRICIAN.

WARNING- RISK OF FIRE OR ELECTRIC SHOCK

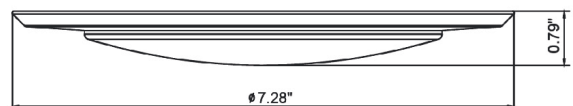
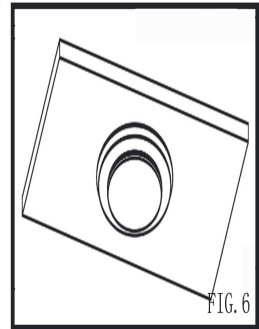
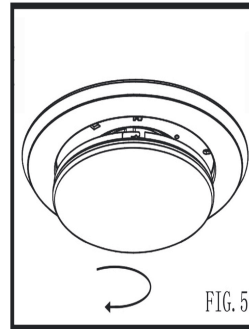
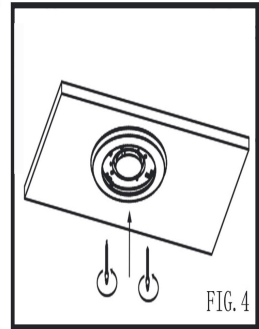
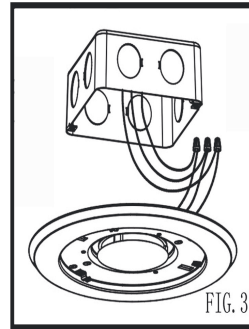
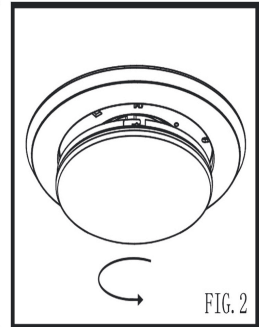
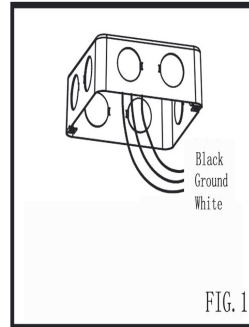
- DO NOT MAKE OR ALTER ANY OPEN HOLES IN THE ENCLOSURE TO THE WIRING OR ELECTRICAL COMPONENTS DURING KIT INSTALLATION.
- TO PREVENT WIRING DAMAGE OR ABRASION, DO NOT EXPOSE WIRING TO EDGES OF SHEET METAL OR OTHER SHARP OBJECTS.
- SUITABLE FOR DRY AND DAMP LOCATIONS
- SUITABLE FOR TYPE IC OR SUITABLE FOR TYPE NON-IC
- USE ONLY IN OPEN LUMINAIRES
- THIS DEVICE IS NOT INTENDED FOR USE WITH EMERGENCY EXITS

ASSEMBLY AND INSTALLATION

This IC/AT fixture is intended for use in suspended ceilings(with or without insulation). Shut off power before installation

- Prepare fixture for recessed installation. (FIG.1)
- Remove lens by twisting counter clockwise. (FIG.2)
- Connect supply wires to wires on fixture with wire nuts or push wires into Quick Connector. Connect white to white , black to black, and copper wire to copper wire as grounding connection.(FIG.3)
- Arrange the wires into the back of the junction box.
- Align appropriate holes in the mounting fixture with the holes in the junction box. Using 2 of the longer screws (either #6 or #8 screws depending on the size of the holes in your junction box) attach the mounting fixture is flush with the ceiling. Do not over-tighten screws or fixture will not be tight to ceiling. (FIG.4)
- Complete the installation by turn lens clockwise to lock. (FIG.5)

WARNING - RISK OF ELECTRIC SHOCK. DISCONNECT MAIN POWER AT FUSE OR CIRCUIT BREAKER BEFORE INSTALLING OR SERVICING THE FIXTURE.



Voltage	Current	Wattage
120V	0.12A	15W

LED 5/6" DOWN LIGHT INSTALLATION INSTRUCTIONS

RETROFIT

ASSEMBLY AND INSTALLATION

INCANDESCENT HOUSINGS

•Unscrew the WING NUT inside the CAN to detach the SOCKET BRACKET from the CAN. Disengage the SOCKET from the SOCKET BRACKET. (FIG. 2)

•Thread the SOCKET ADAPTER into the SOCKET. (FIG. 3)

•Place spring on mounting bracket. (FIG. 4)

•Using the WIRE NUTS to connect the wires of the RETROFIT TRIM onto the wires of the HALO HOUSING. (FIG. 5)

•If using TORSION SPRINGS, squeeze both TORSION SPRING arms together and insert into the TORSION SPRING SLOTS (or place spring on mounting bracket RECEIVER BRACKETS) of the CAN. (FIG. 5)

•Tuck all wires into the CAN and carefully push the RETROFIT TRIM into CAN. (NOTE: To provide enough room in shallow cans, carefully position SOCKET ADAPTER and SOCKET adjacent to the long side of the LED DRIVER prior to inserting the RETROFIT TRIM into the CAN.) (FIG. 5)

LED HOUSINGS

•Using the WIRE NUTS to connect the wires of the RETROFIT TRIM onto the wires of the HALO HOUSING. (FIG. 5)

•If using TORSION SPRINGS, squeeze both TORSION SPRING arms together and insert into the TORSION SPRING SLOTS (or RECEIVER BRACKETS) of the CAN. (FIG. 5)

•Tuck all wires into the CAN and carefully push the RETROFIT TRIM into CAN. (NOTE: To provide enough room in shallow cans, carefully position SOCKET ADAPTER and SOCKET adjacent to the long side of the LED DRIVER prior to inserting the RETROFIT TRIM into the CAN.) (FIG. 5)

DIMMING

Dimming performance may depend on the dimmer, the dimmer range adjustment setting (for dimmers with brightness range adjustments), the wiring method, and/or the number of LED modules installed onto the dimmer circuit.

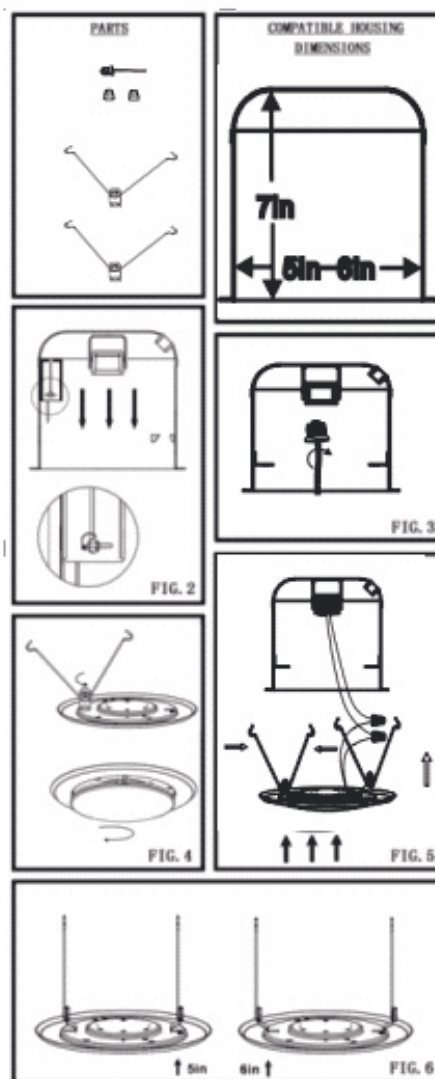
For dimmer selection, Dimming control manufacturers revise their product often.

For best results, it is recommended to install a minimum of four LED modules onto one dimmer.

Before turning on the LED lights, set dimmer position at maximum before adjusting to a lower light level.

Please follow the dimming control manufacturer's instructions for the installation of all dimming controls.

WARNING - RISK OF ELECTRIC SHOCK. DISCONNECT MAIN POWER AT FUSE OR CIRCUIT BREAKER BEFORE INSTALLING OR SERVICING THE FIXTURE.



Following is a list of recommended dimmers:

Brand	Lutron	Leviton
Model	DVCL-153P-WH	6683
	MACL-153M-WH	6672
	S-600PR-WH	6631
	SPSLV-600-WH	6633-P
	DVLV-603P-IV	1A23O5
	MALV-600-IV	0B33K1
	MALV-600	
	DVW-603PGH-WH	
	4X603	
	CTCL-153P	
	SLV-600P-WH	
	DVW-603P6H-WH	
	CT-603PG	
	NT-1000	
	S-603P	
	DV-600P	
	RA-6D	