

# INSTALLATION MANUAL



SFS1036

## IMPORTANT NOTICE



- ⚠ Ensure the pipes are clear and flush or blow out debris before installation to prevent blockages.
- Please read this manual carefully before installation.
- For installation videos, please scan the QR code on instruction manual.
- Ensure all parts are included before starting the assembly.
- For replacement parts, please contact us using the contact information in the footer.

## LIFETIME LIMITED WARRANTY

EVERSTEIN, a brand committed to the highest standards of quality and craftsmanship, provides a Lifetime Limited Warranty for its shower systems. This warranty is applicable to the original purchaser and covers defects in material or manufacturing workmanship, proof of purchase will be required in the case of a claim.

For manufacture defects, EVERSTEIN will, at its option, (1) replace the defective part or product free of charge, (2) refund the original purchase price of the product (valid for 30 days from the date of delivery).

EVERSTEIN recommends installation by a licensed professional plumber. EVERSTEIN is not responsible for any damage or product failure caused by improper installation, misuse or failure to use a licensed professional.

## WARRANTY COVERAGE EXCLUSIONS:

This warranty does not cover defects or damage caused by the use of non-EVERSTEIN original parts. Furthermore, any damage resulting from faulty installation, product abuse, improper use, or the use of abrasive cleaners or solvents is not covered by this warranty. Labor charges and/or damage incurred during installation, repair, or replacement are also not the responsibility of EVERSTEIN.

## LIMITATIONS OF LIABILITY:

Except as required by law, this warranty replaces all other warranties, conditions, and guarantees, whether expressed or implied, statutory or otherwise, including but not limited to merchantability or suitability. In certain states, provinces, and countries, the exclusion or limitation of incidental or consequential damages may not apply.

## RESPONSIBILITIES OF OTHERS

Inspecting the unit prior to installation is the responsibility of the installer or building contractor who acts on behalf of the user. They are responsible for ensuring the unit is free of defect or damage. In the event of a problem, the unit must not be installed. EVERSTEIN is not responsible for failures or damage that could have been discovered, repaired, or avoided by proper inspection and testing prior to installation.

Damage occurring in transit is the responsibility of the carrier. The user or installer MUST open the crate and inspect the unit for damage when it is delivered. If damage is discovered, it must be reported immediately to the EVERSTEIN and the carrier in writing.

## WARRANTY SERVICE NOTE

When requesting warranty, be sure to have the following:

- Copy of original invoice
- Date of installation
- Description and pictures of defect
- Model number or description of model

To obtain warranty service and replacement part, please contact EVERSTEIN Customer Service Team. EVERSTEIN will determine whether to repair or replace your product, issue a refund.

# **CONTENT**

---

**1.2-function Rain Shower System** ----- (1-7)

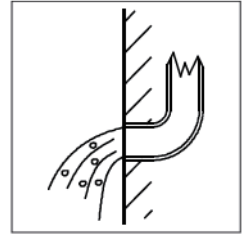
# **CONTENIDO**

---

**1.Sistema de Ducha de Lluvia de 2 Funciones** ----- (8-14)

## ◆ Installation and maintenance matters

1. Check the accessories list to verify that all parts are complete in this package.
2. Do not disassemble the main body by yourself.
3. Connect inlet pipes to supply valves.
4. Make sure inlet pipes and supply valves have no impurities and are cleaned, with no impurities in the pipeline.
5. After installation, check all joints for leakages.
6. Do not leave the rain shower system exposed to a severely corrosive environment.



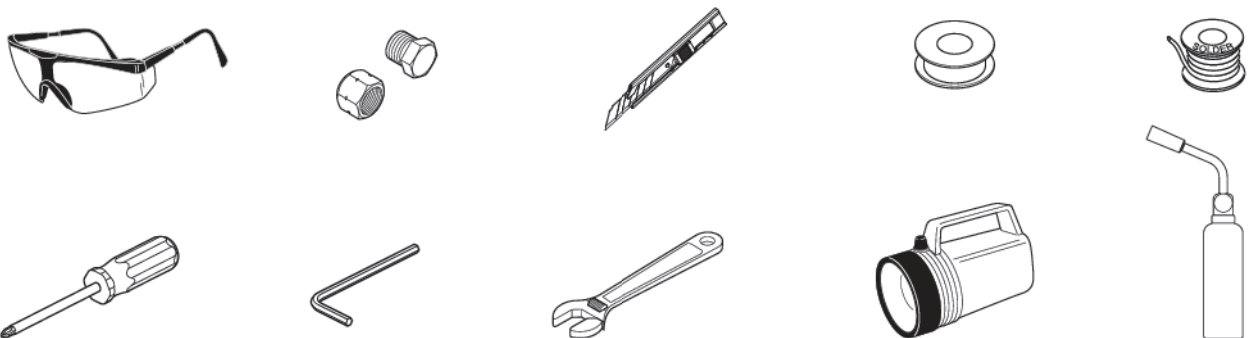
### Do's

1. In order to keep the mixer surface bright, please clean the mixer regularly.
2. Rinse the faucet with clean water and wipe it with a soft cotton cloth.
3. Use one of the following cleaners to remove dirt from the surface:
  - a. Mild liquid cleaner.
  - b. Colorless glass cleaner and powder cleaner that do not cause abrasion and can be dissolved completely.
  - c. Polish liquid that does not cause abrasion.

### Don'ts

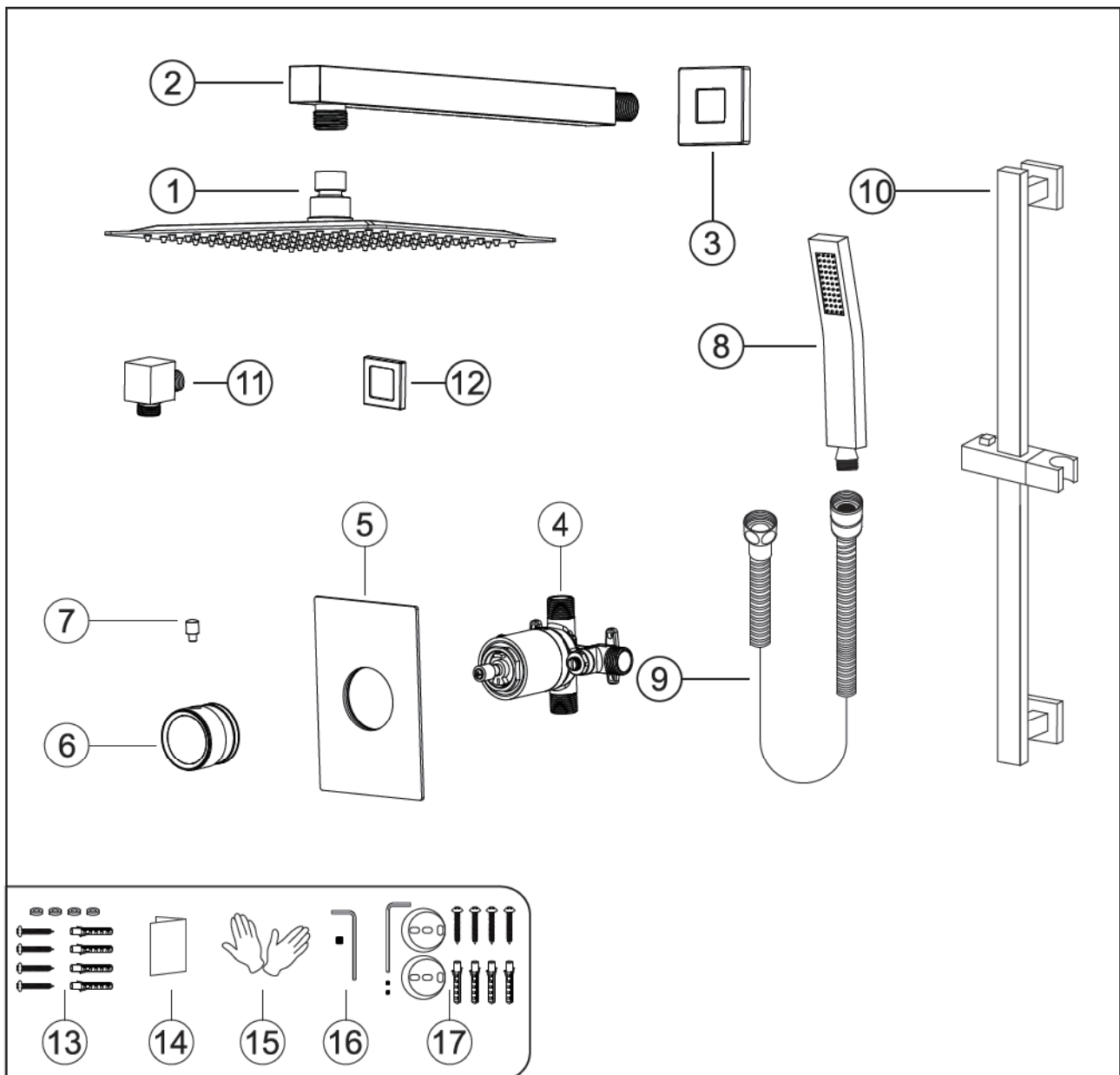
- a. Avoid using cleaning powder, harsh cleaning chemicals, brushes and coarse cloth to prevent scratching and friction.
- b. Do not use acid cleaners to clean the faucet as they may cause surface corrosion of the faucet. If the faucet is exposed to harmful acid substances, please rinse it immediately with water.

### TOOLS NEEDED:



## ◆ Two-function Rain Shower System

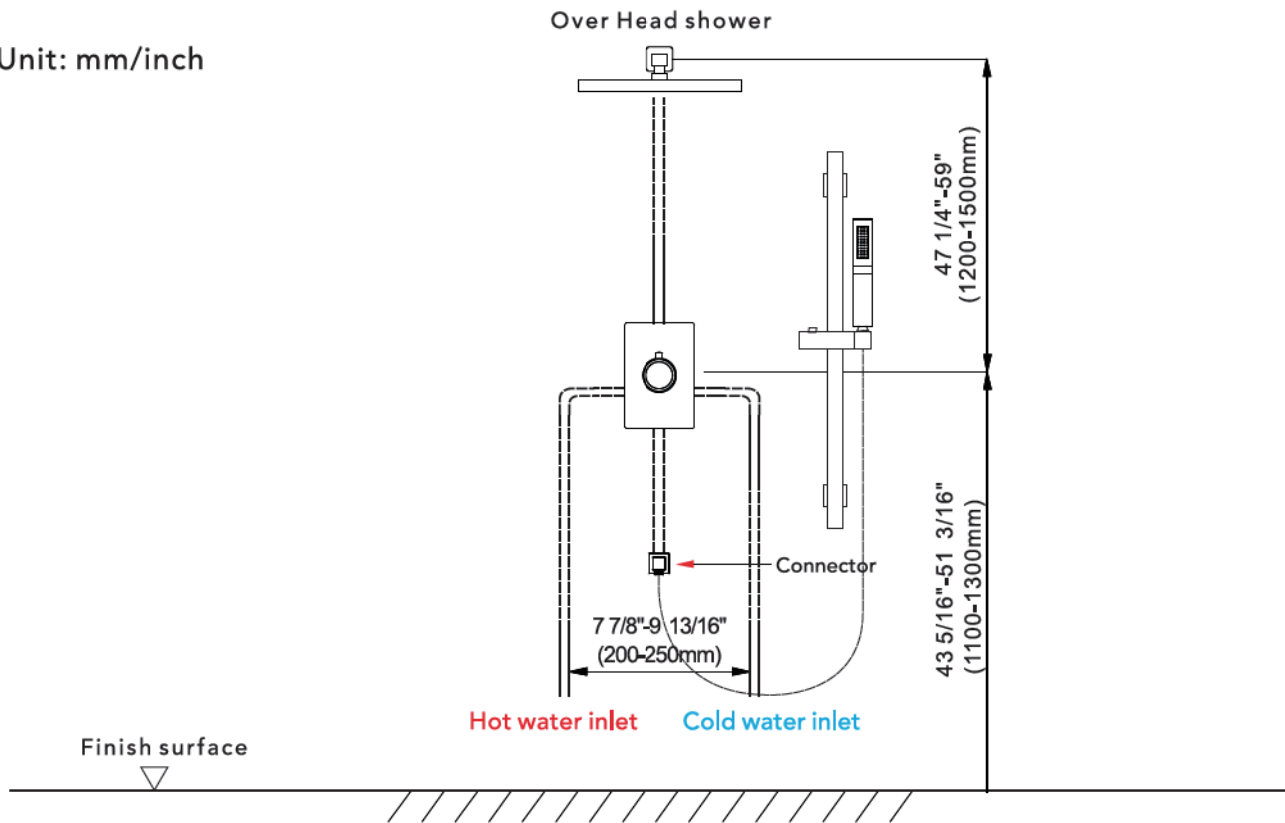
### Accessories List



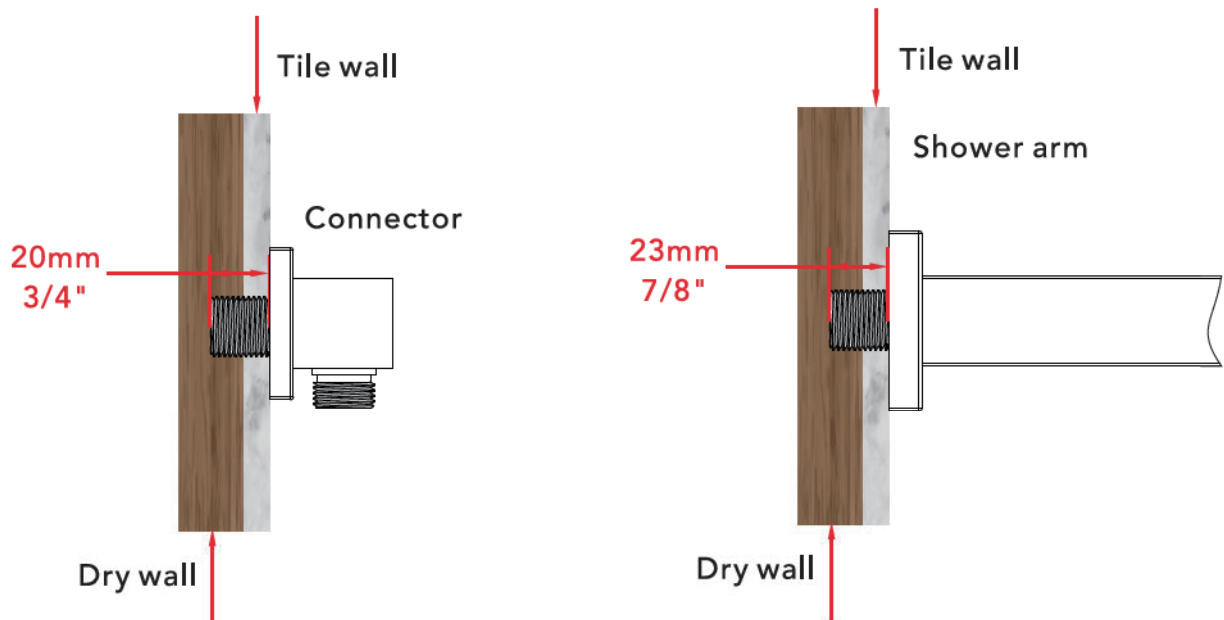
No.	Part name	Qty	No.	Part name	Qty
1	Shower head	1	10	Lifting rod	1
2	Shower arm	1	11	Connector	1
3	Shower arm cup	1	12	Cup	1
4	Main body	1	13	Main body spare parts	4
5	Deck plate	1	14	Instruction manual	1
6	Handle	1	15	Gloves	2
7	Handle cap	1	16	Handle wrench	1
8	Shower hand	1	17	Lifting rod parts	1set
9	Shower hose	1	18		

## ◆ Essential dimensions & water pipe line

Unit: mm/inch



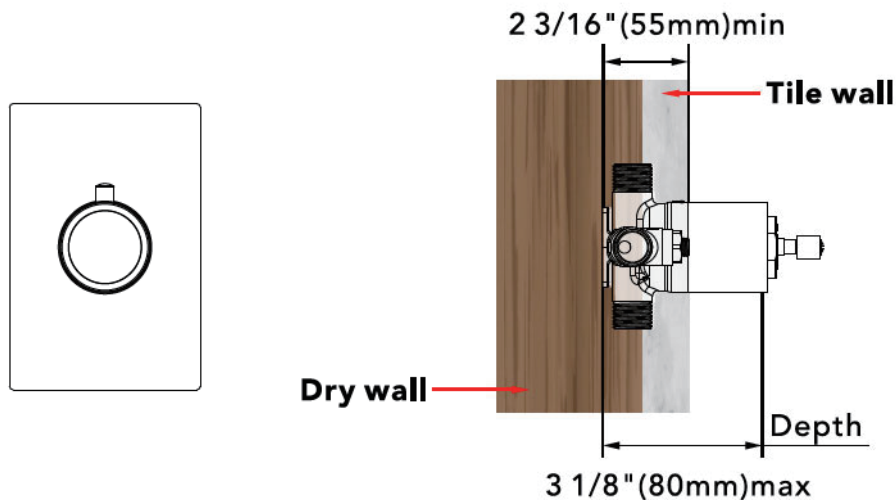
## ◆ The installation depth of shower holder and shower head



The thickness of the tile must be calculated for installation.

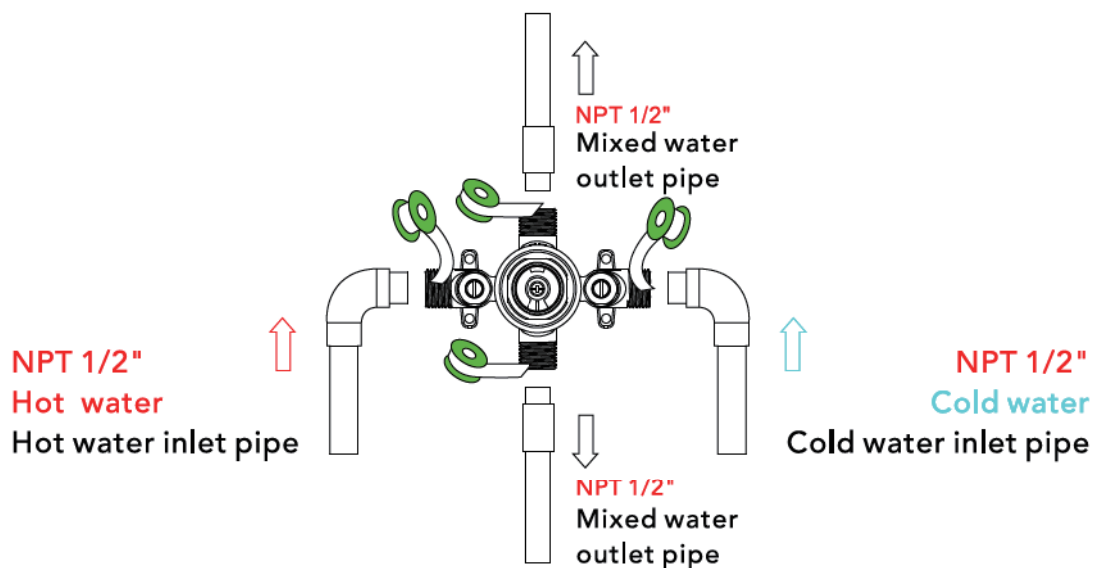
Connector size of male thread: USA:  $\frac{1}{2}'' - 14\text{NPT}$ , Canada:  $\frac{1}{2}'' - 14\text{NPT}$ , Europe:  $G\frac{1}{2}''$ .

## ◆ Installation Depth Of Main Body



- Notice: 1. The installation depth of the main body should be no less than 2 9/16" (65mm) and no more than 2 15/16" (75mm), including the thickness of the tile. Otherwise, the deck plate cannot be installed.
2. The opening size of ceramic tile shall be smaller than the deck plate size.

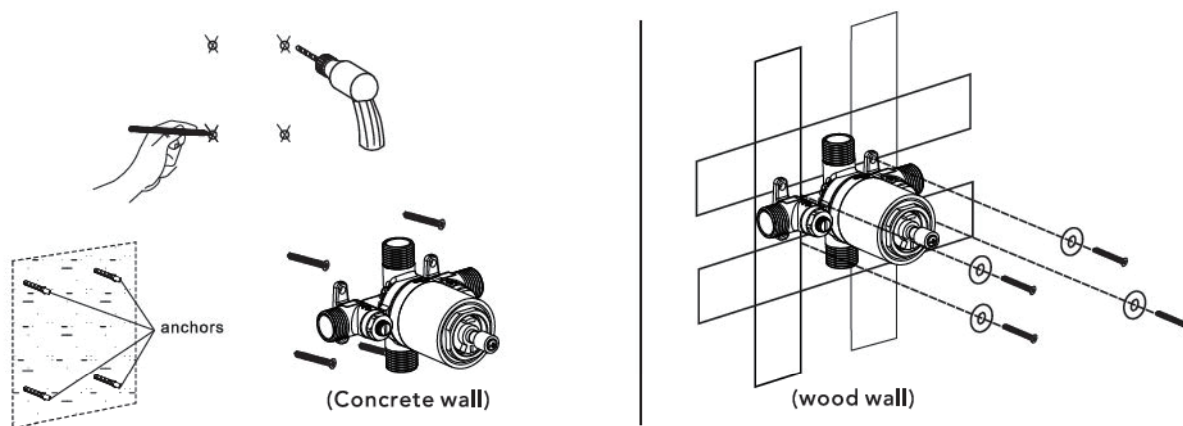
## ◆ Piping Instructions Before Tiling



1. As shown in the figure, the inlet and outlet pipes are pre-buried. Please pay attention to the correct direction when installing the pre-buried main body.
2. Before tiling, turn on the water to test whether the left and right inlet pipes are tightly connected without leakage. Then, adjust the flow switch to the "on" position to check for leaks in the mixed outlet pipes.

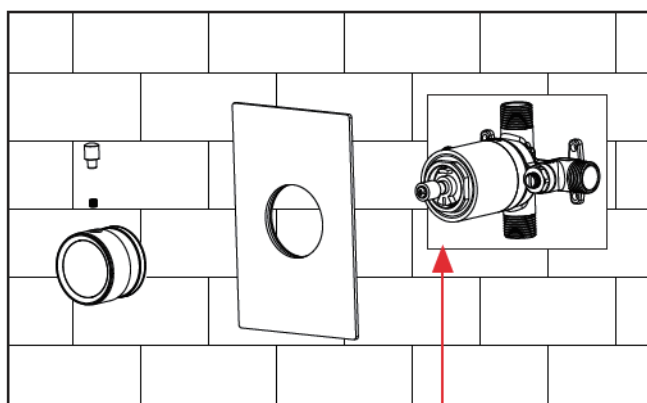
## ◆ Main Body Valve Installation

### Step1

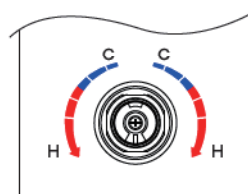
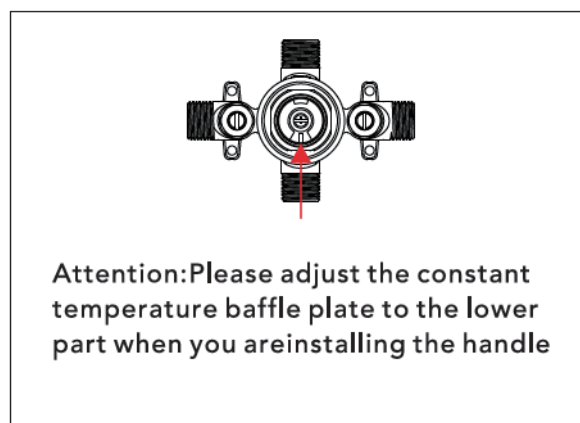


1. Make marks according to the size of the main body valve, and then drill anchors into the wall (concrete wall).
  2. Lock the main body to wood directly with screws (wood wall).
  3. When installing the main body, please mark the UP side up and do not install it upside down.
- ▲ Please note that the level meter should be parallel to the wall; otherwise, the deck plate cannot be installed.

### Step2



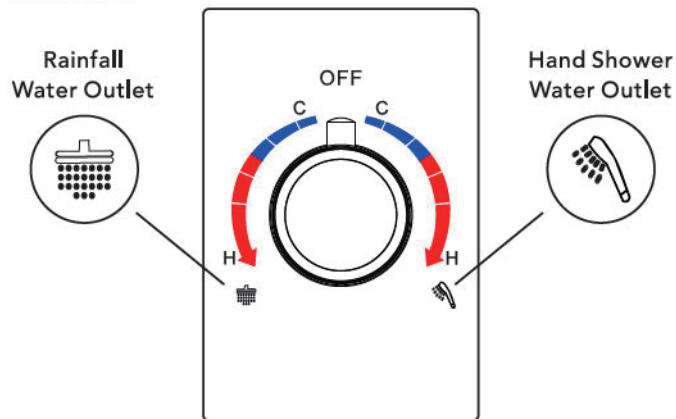
Do not remove the white wear ring; otherwise, the handwheel will be damaged.



Precautions for handwheel installation

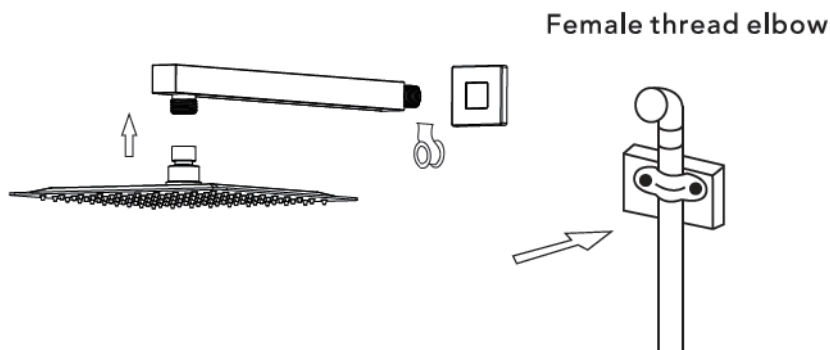
1. Use Main body spare parts and to fixed Main body on the wall and then install deck plate.
2. Please fix the main body to the wall install deck plate ,water diverter screw and water diverter cap step by step.
3. Install the handle with the screw and handle cap.

## ◆ Water Discharge Function Introduction



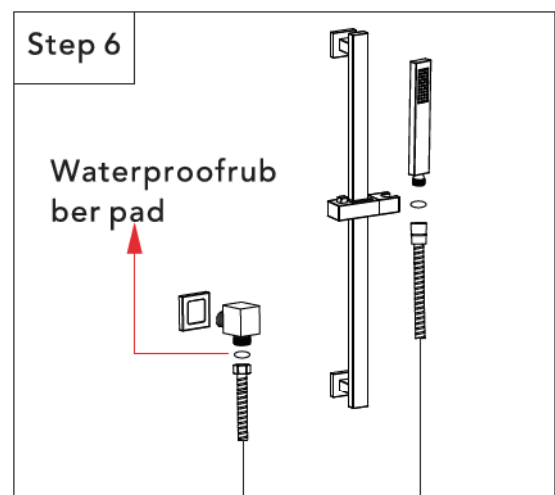
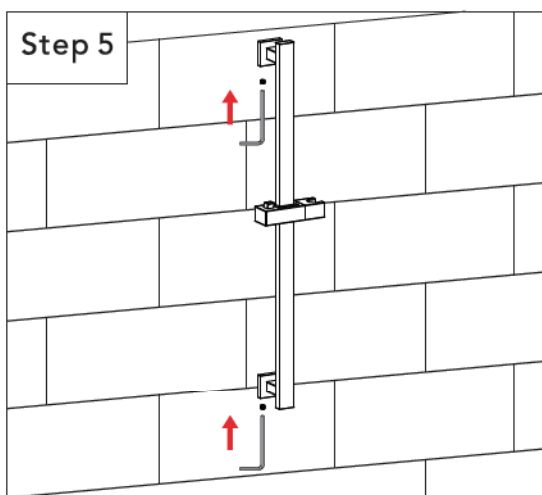
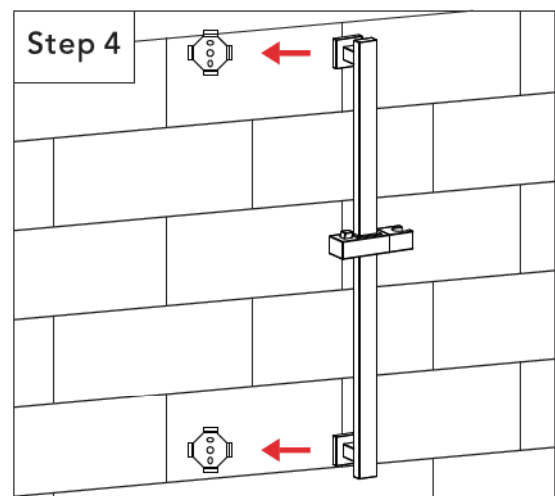
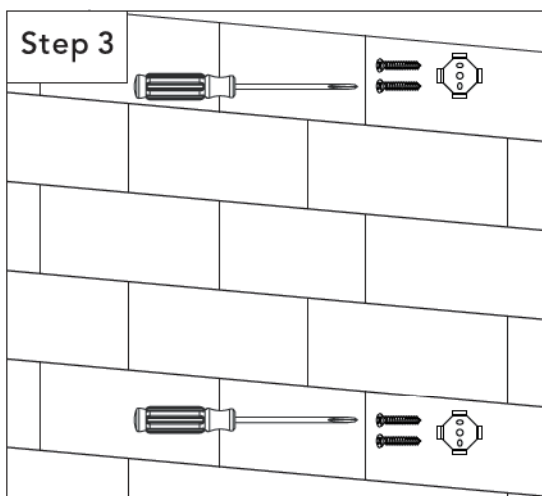
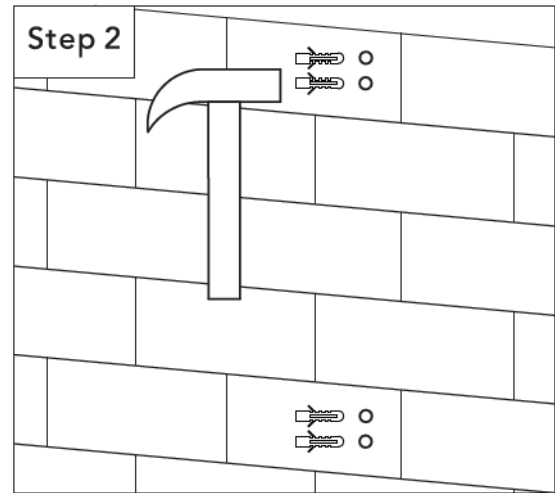
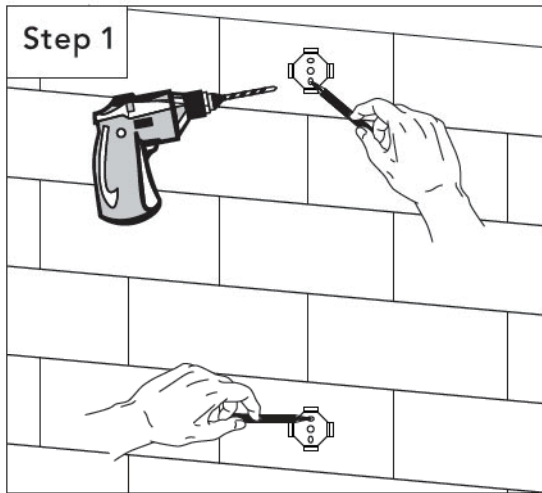
1. When the handwheel points to "OFF," the water flow is turned off.
  2. Turning the handwheel to the left opens the overhead shower, adjusting gradually from cold to hot water.
  3. Turning the handwheel to the right opens the tap, adjusting gradually from cold to hot water.
- 

## ◆ The installation of the Shower head



1. Connect shower arm with the cover before screwing arm into riser connection to prevent damage.
2. Fix shower head onto shower arm and apply tape to pipe threads on both ends.
3. Do not over tighten shower head. It is 360° swivel connection.

## ◆ Lifting Rod Installation



1. Mark the punch position with a pen, drill holes using a 6 mm electric drill, then knock the pellets in. Lastly, place the base and screw in the screws.

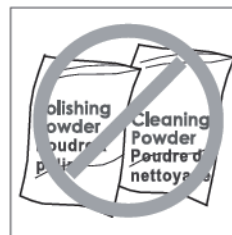
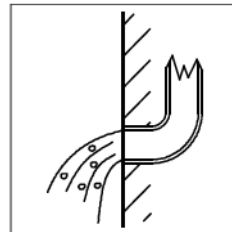
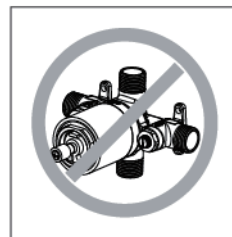
2. Put the Shower Elevator Rack into the base, then tighten the screw. Done.

Step 1. Wrap the connector with Teflon tape. Screw the thread into the water pipe inside the wall.

Step 2. Install the rubber pad on the shower hose and connect it to the connector.

## ◆ Instalación y cuestiones de mantenimiento

1. Verifique la lista de accesorios para comprobar que todas las partes están completas en este paquete.
2. No desmonte el cuerpo principal por sí mismo.
3. Conecte las tuberías de entrada a las válvulas de suministro.
4. Asegúrese de que las tuberías de entrada y las válvulas de suministro no tengan impurezas y estén limpias, sin impurezas en la tubería.
5. Después de la instalación, verifique todas las uniones para detectar fugas.
6. No deje el sistema de ducha tipo lluvia expuesto a un ambiente severamente corrosivo.



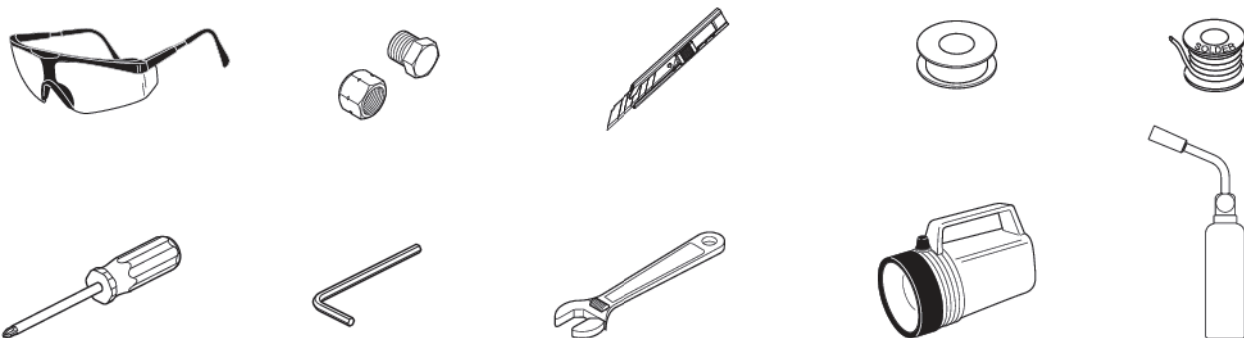
### Hacer

1. En para mantener la superficie de la batidora brillante, limpie el mezclador regularmente.
2. Inse el grifo con agua limpia y límpielo con un suave ropa de algodón.
3. Utilice uno de los siguientes limpiadores para eliminar la suciedad de la superficie: a. Limpiador líquido suave. b. Limpiador de vidrio incoloro y limpiador en polvo que no causen abrasión y que se puedan disolver completamente. c. Líquido pulidor que no cause abrasión.

### No es decir

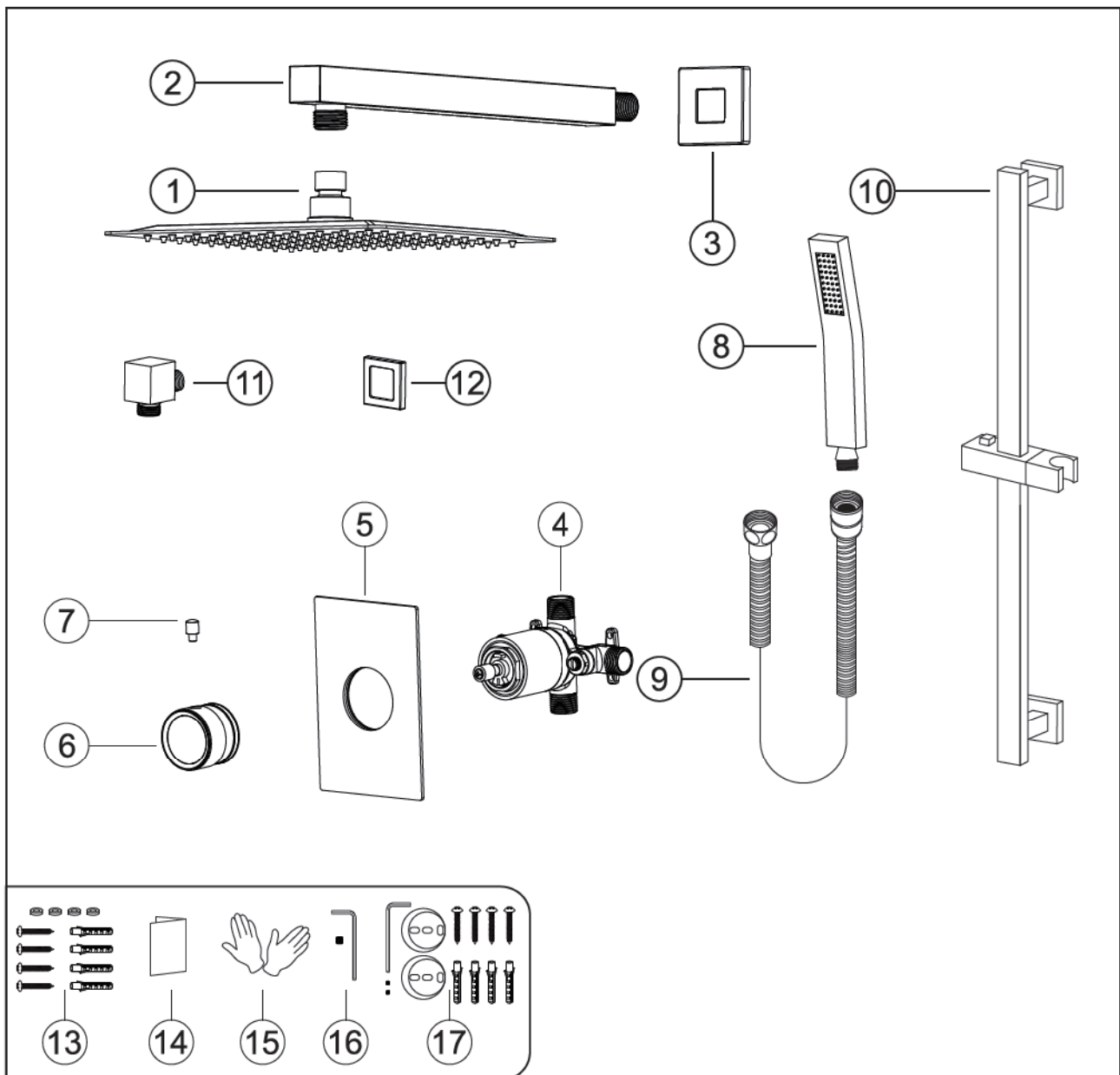
- A. Valte con polvo de limpieza, productos químicos de limpieza duros, cepillos y tela gruesa para evitar rascar y fricción.
- B. No use limpiadores de ácidos para limpiar el grifo, ya que pueden causar corrosión superficial del grifo. Si el grifo está expuesto a sustancias ácidas dañinas, enjuague inmediatamente con agua.

## HERRAMIENTAS NECESARIAS:



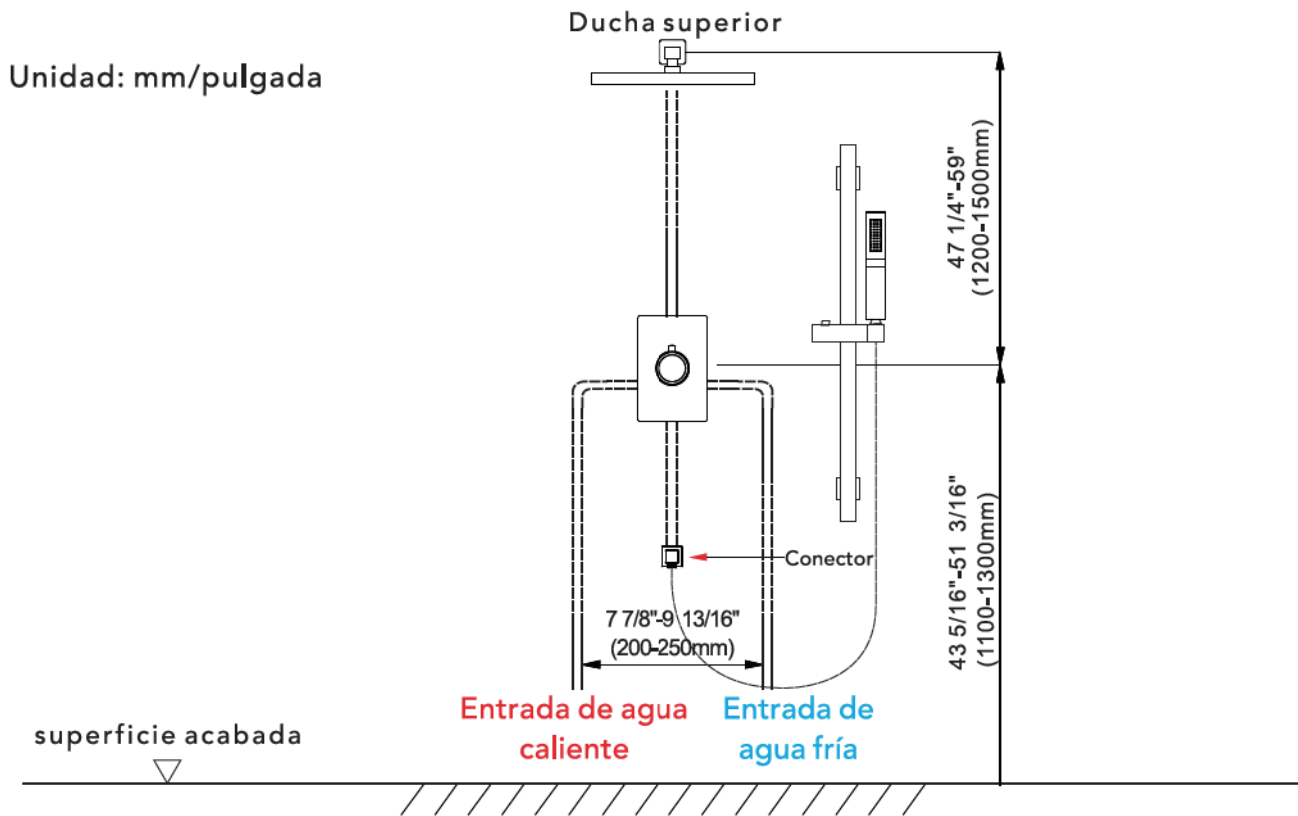
## ◆ Grifo de ducha con botón de 2 funciones

### Lista de Accesorios

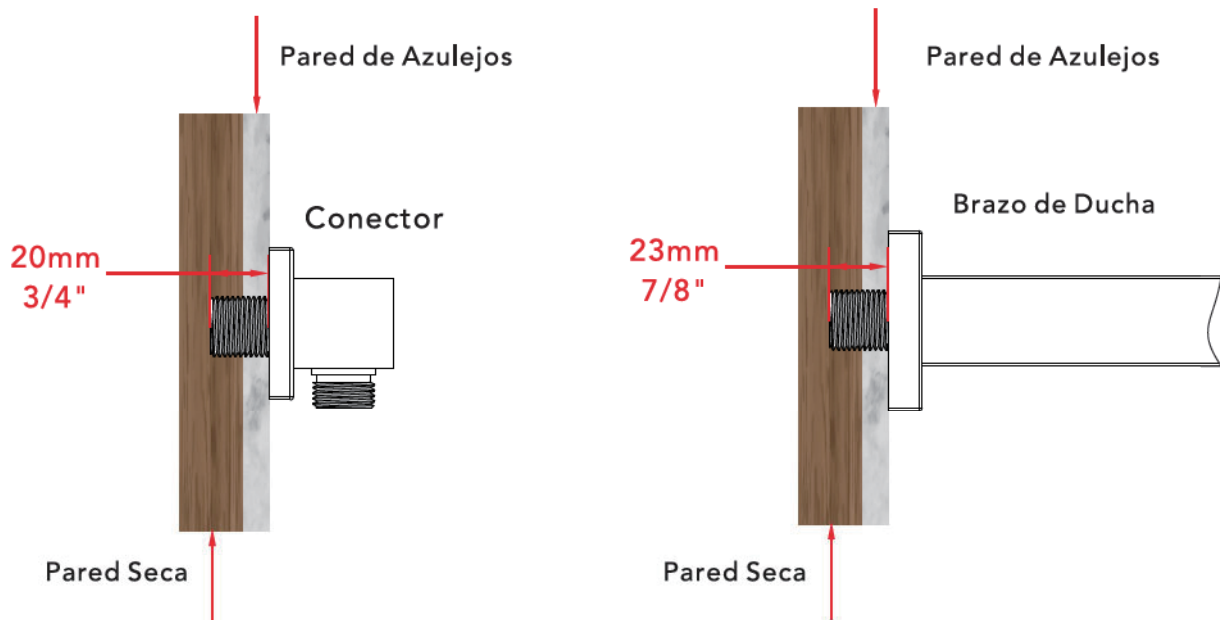


N.º	Nombre de la pieza	Cant.	N.º	Nombre de la pieza	Cant.
1	Cabezal de ducha	1	10	Barra de elevación	1
2	Brazo de ducha	1	11	Conector	1
3	Copa del brazo de ducha	1	12	Taza	1
4	Cuerpo principal	1	13	Piezas de repuesto del cuerpo principal	4
5	Placa de cubierta	1	14	Manual de instrucciones	1
6	Manija	1	15	Guantes	2
7	Tapa de la manija	1	16	Llave de manija	1
8	Ducha de mano	1	17	Piezas de la barra de elevación	1 juego
9	Manguera de ducha	1	18		

## ◆ Essential dimensions & water pipe line



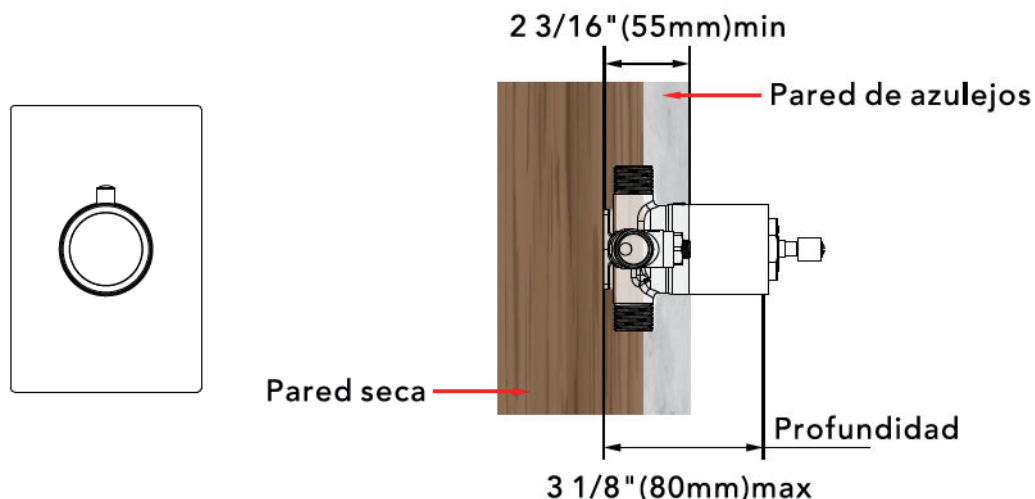
## ◆ La profundidad de instalación del soporte de ducha y del cabezal de ducha



El grosor del azulejo debe ser calculado para la instalación.

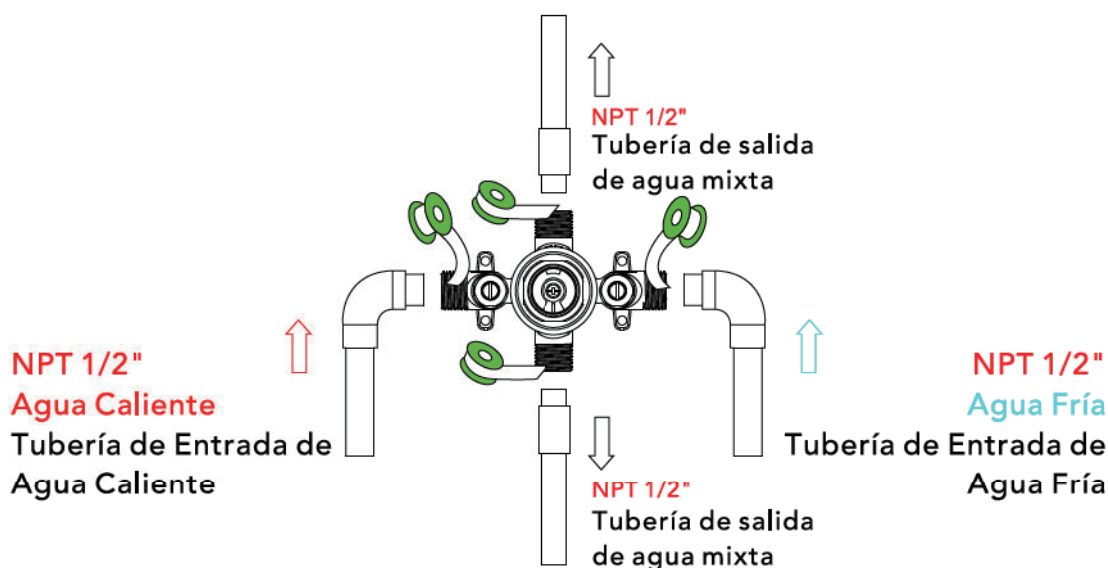
Tamaño del conector de rosca macho: EE. UU.: 1/2"-14NPT, Canadá: 1/2"-14NPT, Europa: G1/2".

## ◆ Profundidad de Instalación del Cuerpo Principal



- Aviso: 1. La profundidad de instalación del cuerpo principal no debe ser inferior a 2 3/16" (55 mm) y no más de 3 1/8" (80 mm), incluyendo el grosor del azulejo. De lo contrario, la placa de cubierta no podrá ser instalada.
2. El tamaño de apertura del azulejo cerámico debe ser menor que el tamaño de la placa de cubierta.

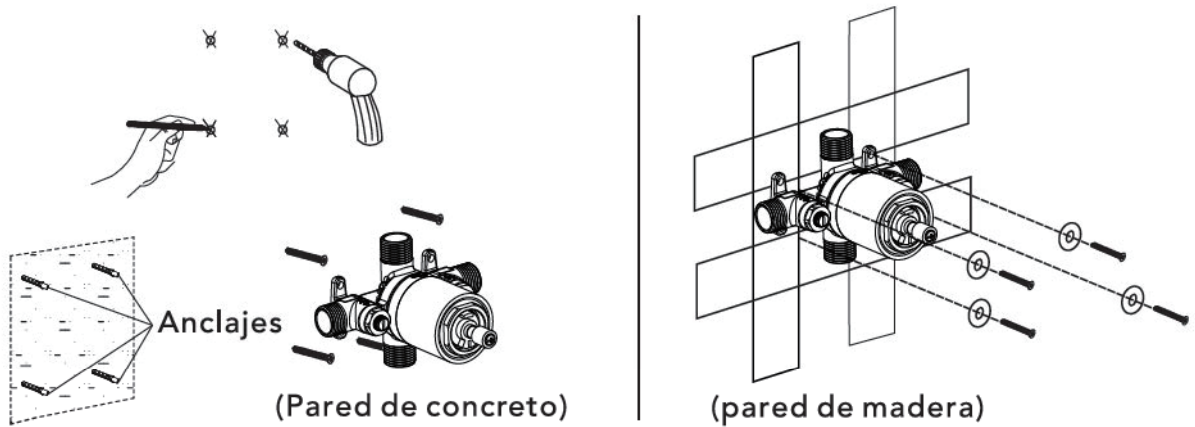
## ◆ Instrucciones de Tubería Antes de Colocar Azulejos



1. Como se muestra en la figura, las tuberías de entrada y salida están pre-enterradas. Por favor, preste atención a la dirección correcta al instalar el cuerpo principal pre-enterrado.
2. Antes de colocar los azulejos, abra el agua para probar si las tuberías de entrada izquierda y derecha están conectadas herméticamente sin fugas. Luego, ajuste el interruptor de flujo a la posición "on" para comprobar si hay fugas en las tuberías de salida mezcladas.

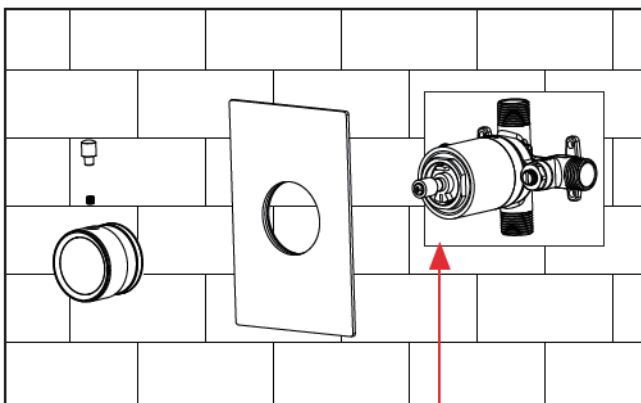
## ◆ Instalación de la Válvula del Cuerpo Principal

### Paso 1

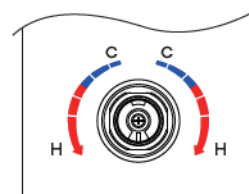


1. Marque según el tamaño de la válvula del cuerpo principal y luego perforo para colocar los anclajes en la pared (pared de concreto).
  2. Fije directamente el cuerpo principal a la madera con tornillos (pared de madera).
  3. Al instalar el cuerpo principal, por favor marque el lado UP hacia arriba y no lo instale al revés.
- ▲ Tenga en cuenta que el nivel debe estar paralelo a la pared; de lo contrario, la placa de cubierta no podrá ser instalada.

### Paso 2



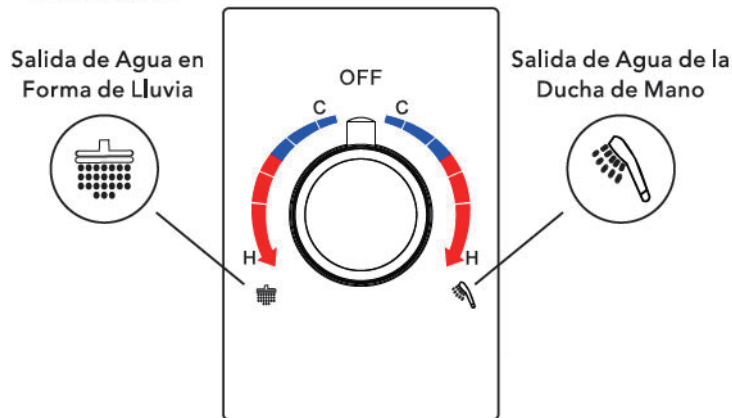
No retire el anillo blanco de desgaste; de lo contrario, la rueda manual se dañará.



Precauciones para la instalación de la rueda manual

1. Use las piezas de repuesto del cuerpo principal para fijar el cuerpo principal en la pared y luego instale la placa de cubierta.
2. Por favor, fije el cuerpo principal a la pared e instale la placa de cubierta, el tornillo del desviador de agua y la tapa del desviador de agua paso a paso.
3. Instale la manija con el tornillo y la tapa de la manija.

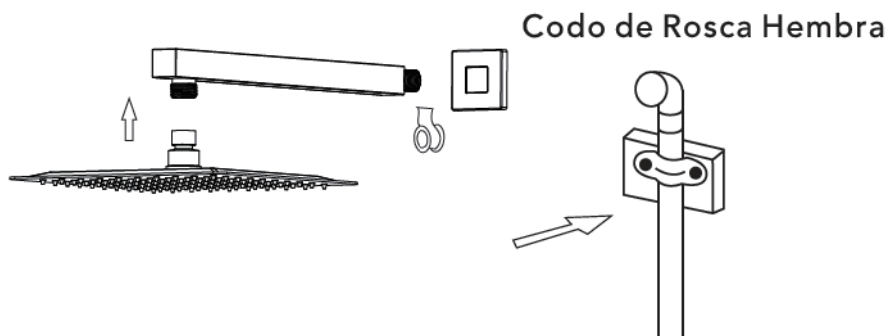
## ◆ Introducción a la Función de Descarga de Agua



1. Cuando la rueda manual apunta a "OFF", el flujo de agua se cierra.
2. Girar la rueda manual hacia la izquierda abre la ducha superior, ajustando gradualmente de agua fría a caliente.
3. Girar la rueda manual hacia la derecha abre el grifo, ajustando gradualmente de agua fría a caliente.

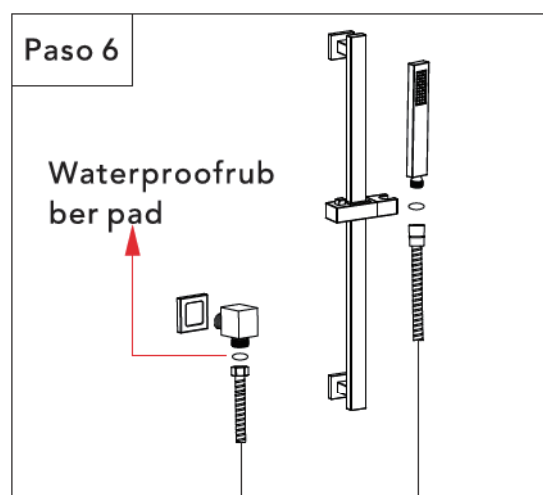
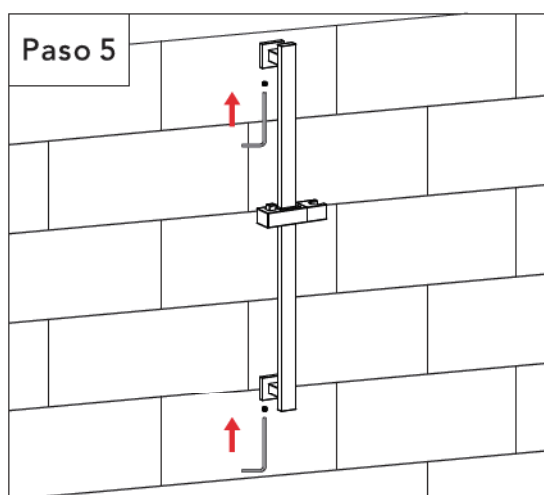
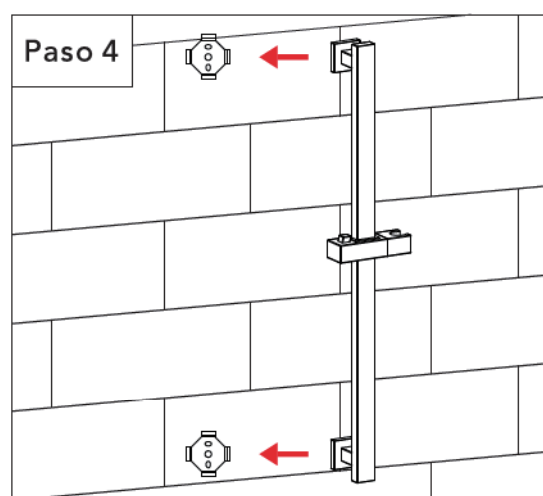
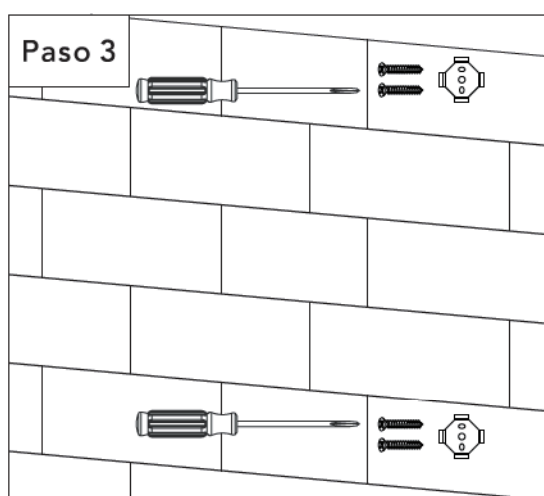
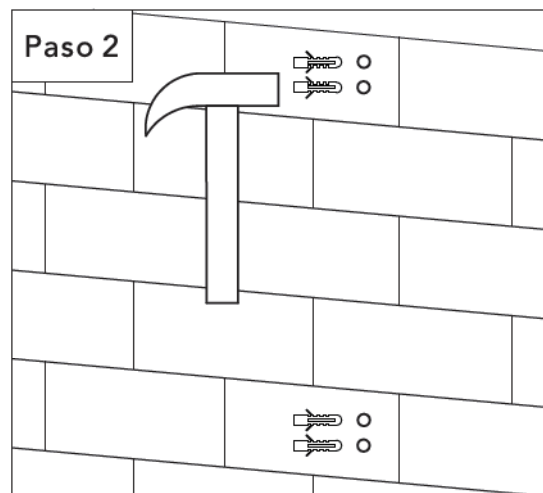
---

## ◆ La instalación del cabezal de ducha



1. Conecte el brazo de la ducha con la cubierta antes de atornillar el brazo en la conexión del elevador para evitar daños.
2. Fije el cabezal de ducha al brazo de ducha y aplique cinta a las roscas de la tubería en ambos extremos.
3. No apriete demasiado el cabezal de ducha. Es una conexión giratoria de 360°.

## ◆ Instalación de la barra de elevación



1. Marque la posición del golpe con un bolígrafo, perforaciones con un taladro eléctrico de 6 mm, golpe los granos en finalmente, colocan la base y atornille los tornillos.

2. Ponga la rejilla del ascensor de la ducha en la base, luego apriete el tornillo, hecho.

Paso1. El conector se envolverá con cinta de teflón, atornille la rosca en el agua tubería dentro de la pared.

Paso2. Install la almohadilla de goma en la manguera de ducha y conéctela con el conector