

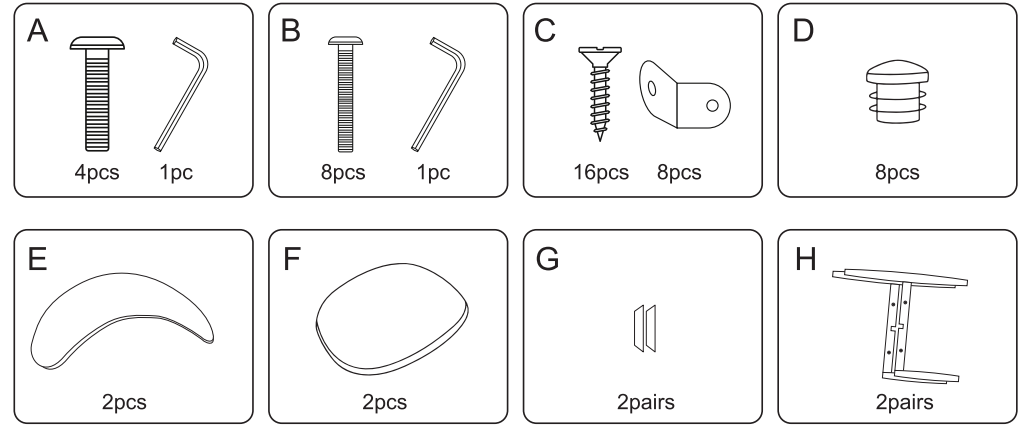


# DINING CHAIR

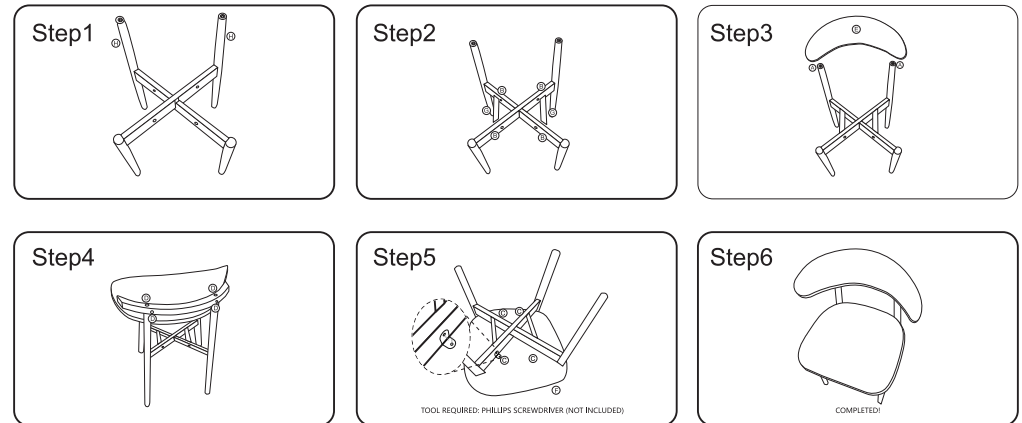
USER MANUAL WITH ASSEMBLY INSTRUCTIONS

THIS CHAIR MUST BE ASSEMBLED BY AN ADULT  
 WARNING: PLEASE READ THE MANUAL CAREFULLY BEFORE OPERATION

## Hardware List ( for 2 dining chairs )



## Assembly Instructions



## Maintenance

- ⊙ Regular cleaning: You can use a soft bristled brush to gently remove surface dust. If there are stains, they can be wiped with a mild detergent and then air dried.
- ⊙ Avoid direct sunlight: Prolonged exposure to sunlight can cause the cotton and linen material to harden and fade. It should be placed in a well ventilated area but away from direct sunlight.
- ⊙ Prevent moisture: A damp environment may cause the cotton and linen dining chairs to mold, so they should be kept dry.