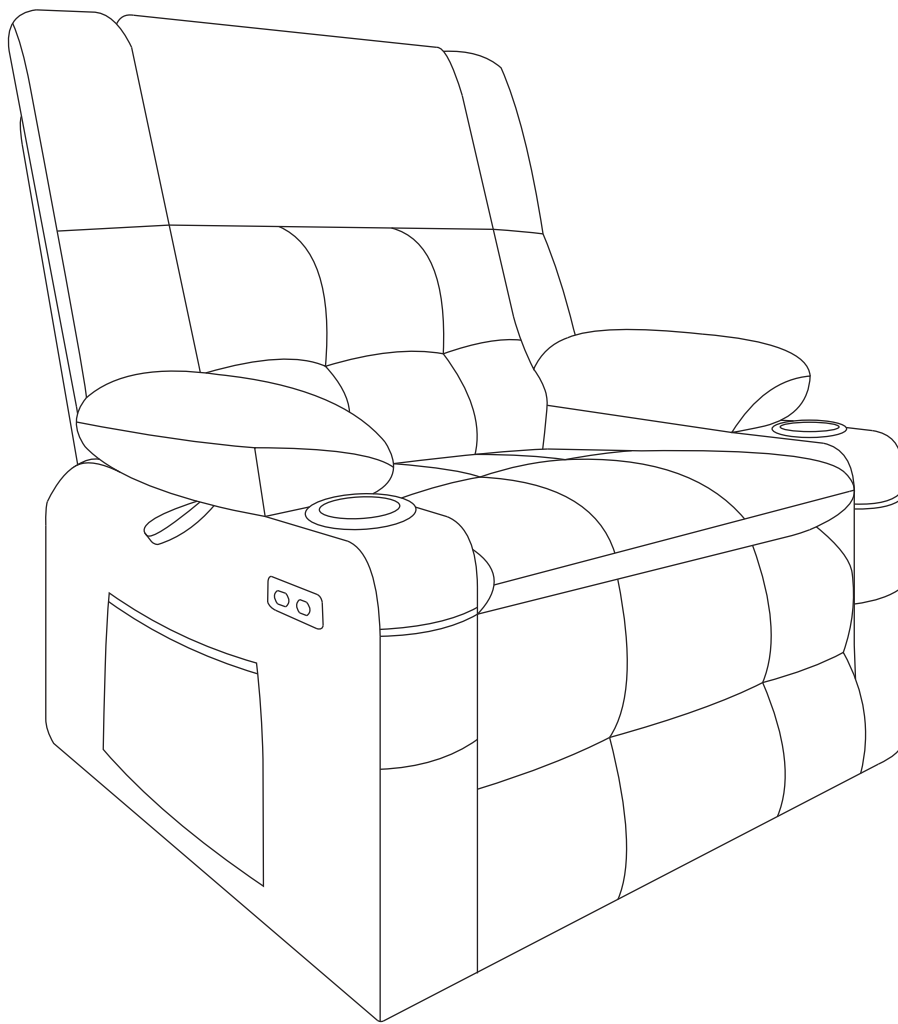


Power Lift Recliner Chair with Arm Storage and Massage



1. ASSEMBLE GUIDE

Thank you very much for choosing our product!

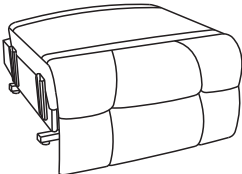
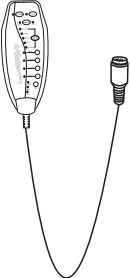
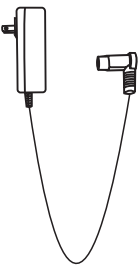
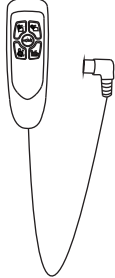
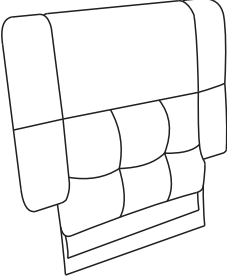
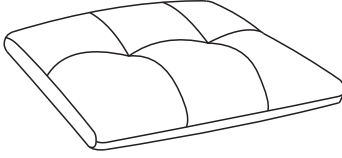
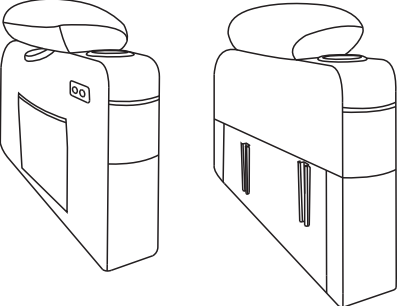
Please take time to read these instructions thoroughly and follow each step carefully for safe and easy operation. Keep this manual for future reference, especially for the safety information.

Also, it is better for you to assemble the chair in cooperation with 2-person, having a second person to help you makes it even easier.

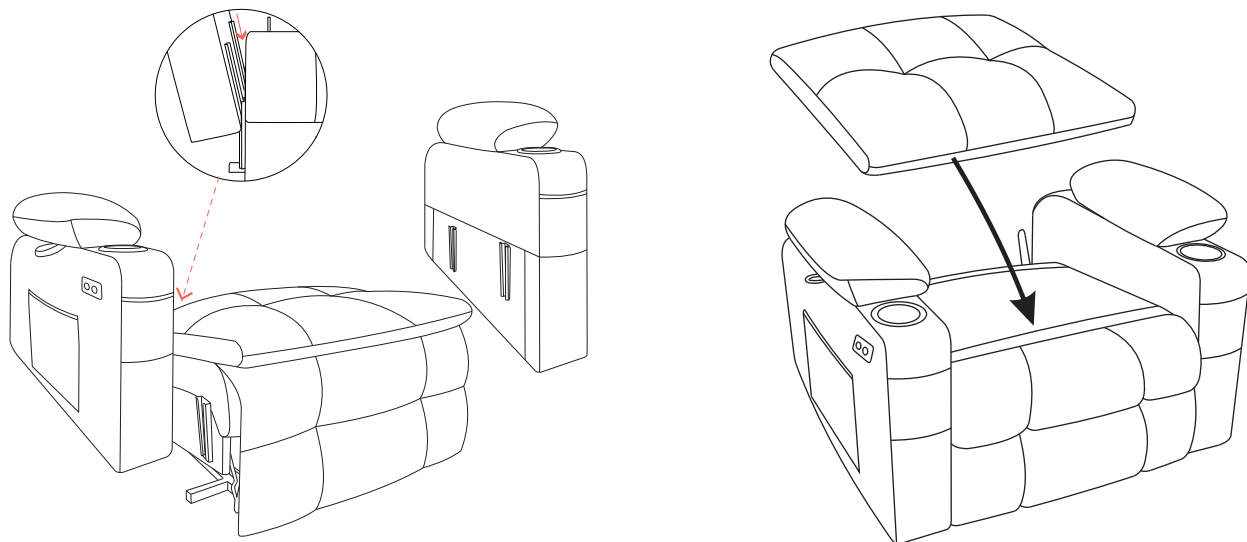
Please read and understand this manual before any assembly. Before beginning assembly of product, make sure all parts are present. Compare parts with packaging contents list.

If any part is missing, damaged and any questions, please feel free to contact us.

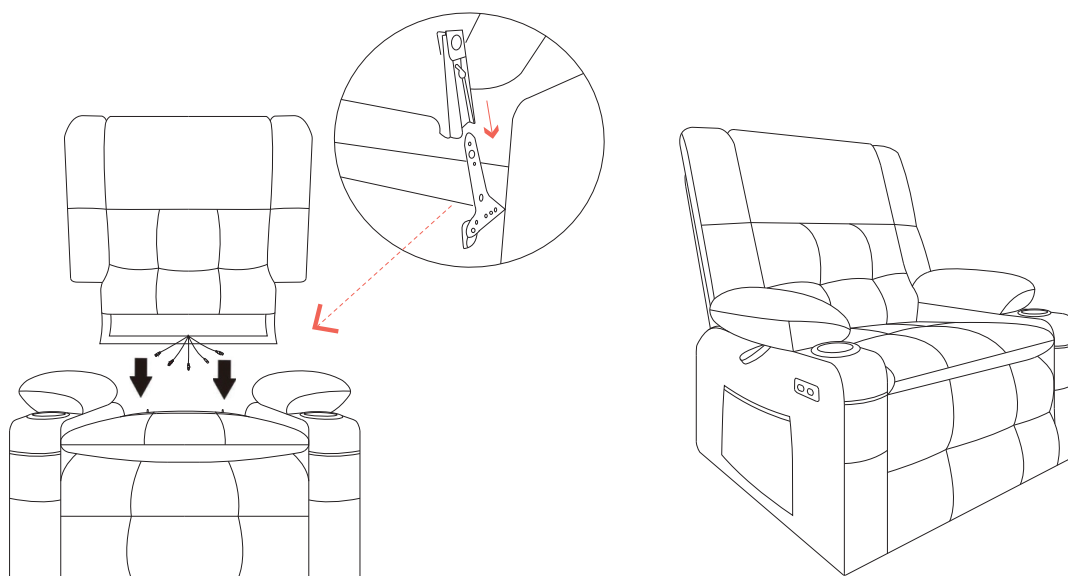
2. PARTS LIST

BOX 1				
Part	A	B	C	D
Description				
Qty	1PC	1PC	1PC	1PC
BOX 2				
Part	E	F		
Description				
Qty	1PC	1PC		
BOX 3				
Part	G			
Description				
Qty	2PCS			

3. ASSEMBLY STEPS

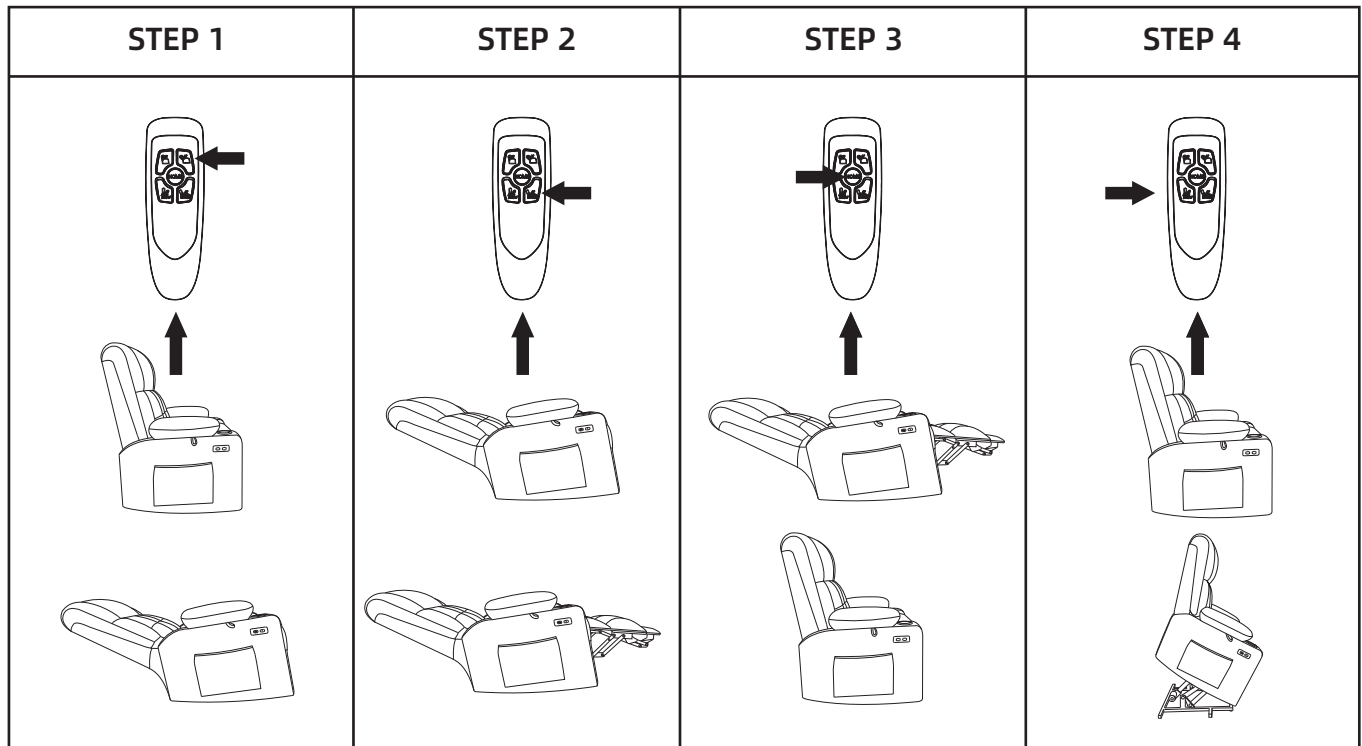


Step1: First, insert the armrests into the chair base. Then attach the seat cushion cover to the adhesive strips on the base.

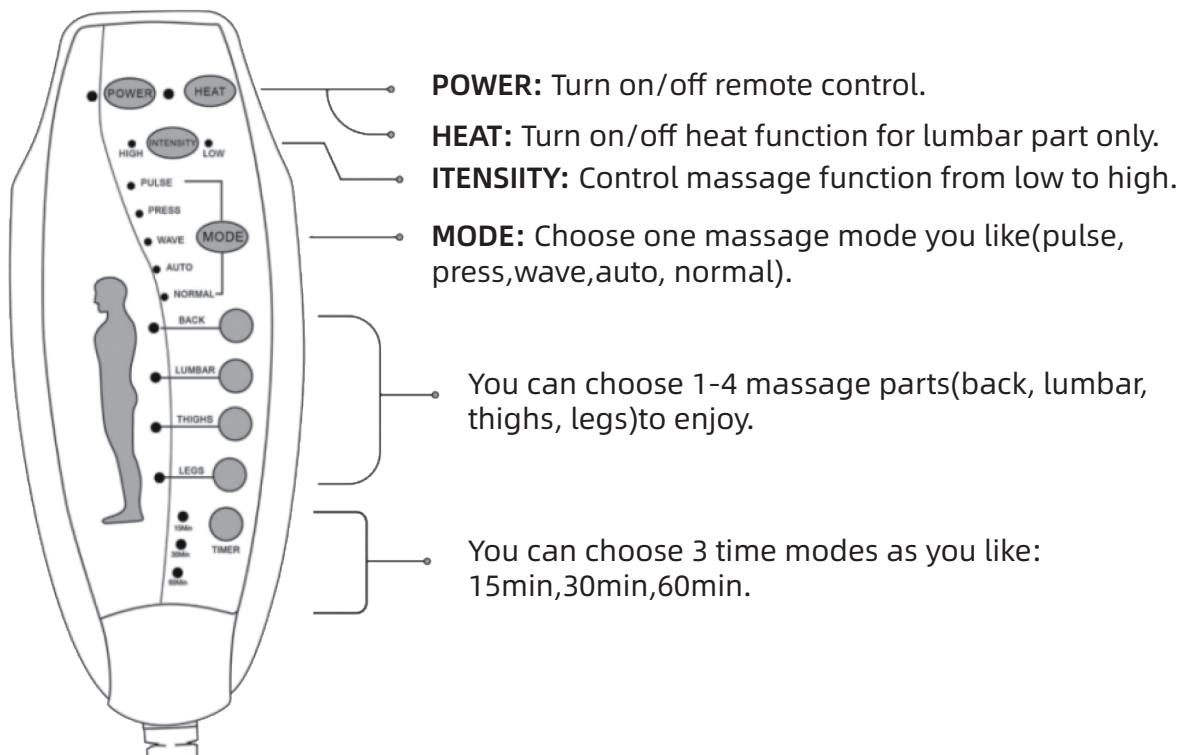


Step2: Align the back to the seat base through the slots then to press down backrest, until hear a “click” , and then ensure that the backrest is stable and will not be pulled out.

4. OPERATING INSTRUCTIONS



How to use the remote control for massage?



5. TROUBLESHOOTING

Question	Question Answers
What if all the chair's functions do not work?	<ul style="list-style-type: none"> • Check that all power cords are properly connected and make sure the power supply is energized. • Make sure the green light on the power adapter goes on. • Make sure the main switch on the base behind the chair is on. • Make sure red light on the base of the chair goes on.
What if massage and heat do not work?	<ul style="list-style-type: none"> • Check that all power cords are properly connected and make sure the power supply is energized. • Make sure the green light on the power adapter goes on. • Make sure the main switch on the base behind the chair is on. • Click the remote control main switch, check if the light goes on. • Make sure you've chosen a massage area.
What if the reclining /lift functions do not work?	<ul style="list-style-type: none"> • Check that all power cords are properly connected and make sure the power supply is energized. • Make sure the green light on the power adapter goes on. • Make sure the main switch on the base behind the chair is on. • Click the remote control switch, check if the light goes on.
What if the USB do not work?	<ul style="list-style-type: none"> • Check that all power cords are properly connected and make sure the power supply is energized. • Make sure the green light on the power adapter goes on. • Make sure the main switch on the base behind the chair is on. • Check that all power cords connecting the USB is not loose.
What if the position setting function do not work?	<ul style="list-style-type: none"> • Check that all power cords properly connected and make sure the power supply is energized. • Make sure the green light on the power adapter goes on. • Make sure the main switch on the base behind the chair is on. • Click the remote control switch, check if the light goes on. • Check if the remote blinks after long pressing the M button for 5 seconds.
<p>• If the above doesn't help or you can't troubleshoot the problem, please provide a picture of the chair's wiring connections/remote control display/product video so that we can accurately assess the problem and provide a solution as soon as possible.</p>	

6. PRODUCT CARE

- Dust regularly with a soft,dry cloth to prevent soil build-up.Keep away from heat to avoid glazing,melting or scorching.Use a professional cleaning service to clean the fabric.

7. WARNING

- This product is not intended for institutional or commercial use.
- FALL HAZARD - To prevent death or serious injury, always keep child within arm's reach.
- Avoid placing this item in direct sunlight to prevent fading.
- Check this product for damaged hardware, loose joints, missing parts or sharp edges before and after assembly and frequently during use.

customer service

Any Problem Please Contact Us

- **If you have any questions, please provide the order number and related pictures to show the problem through email.
We will reply to you within 24 hours, and solve the problem as soon as possible.**