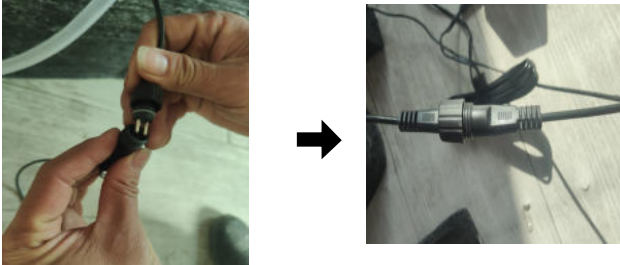


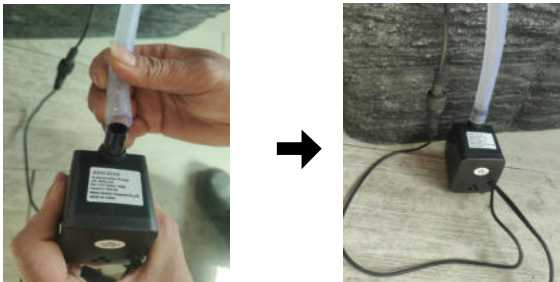
INSTALLATION INSTRUCTION

Step 1



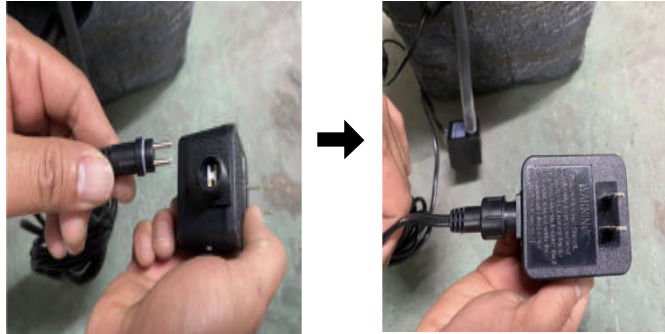
Connect the light wire to the water pump plug.

Step 2



Connect the water pump to the hose on the main body.

Step 3



Connect transformer power cables

Step 4



After all accessories are installed, put the water pump and lamp line into the main body of the fountain, add water to ensure that the water level is higher than the pump, then close the back cover, and finally switch on the power supply
(Please note that the back cover is in the foam slot)

Step 5



Installation is complete
If you have any questions, please contact customer service!