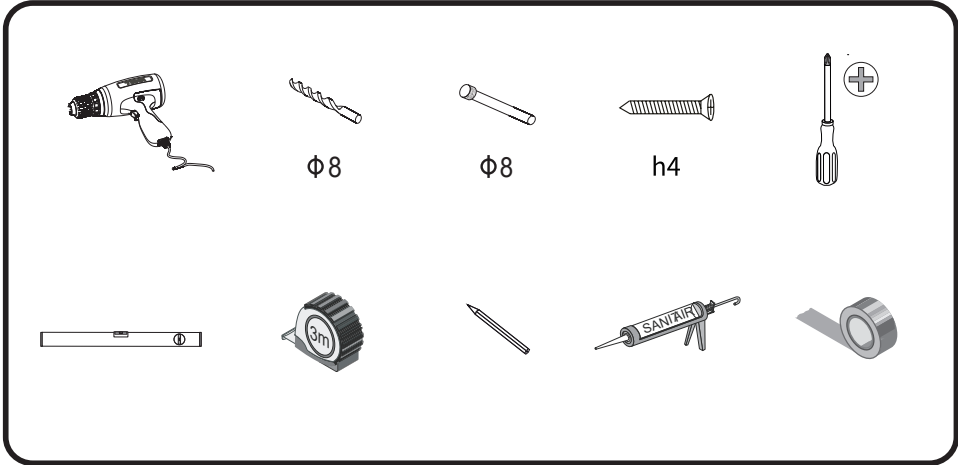




# **Installation Manual**

1、 Parts List	01
2、 Installation instructions	03
3、 Installation Instructions	05
4、 Installation & adjustment of drawer	07
5、 The way to take off the drawer	08

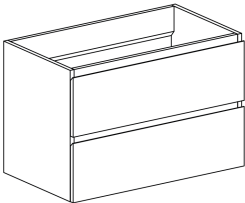
# Tools List



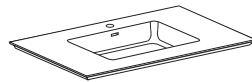
# Parts List

## Wall mounted system

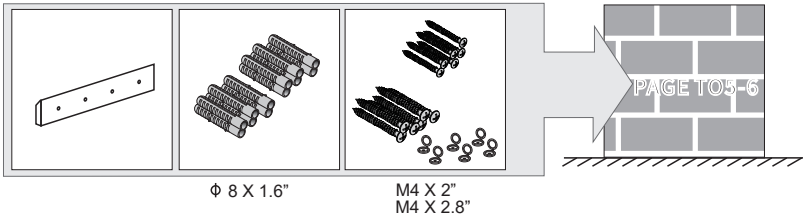
### Cabinet



### Basin



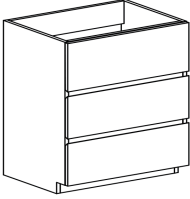
### Fixed Accessories



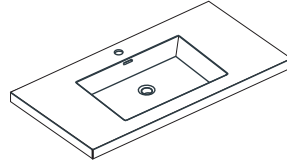
# Parts List

## Floor standing system

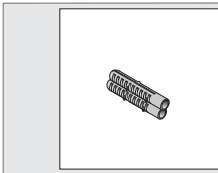
### Cabinet



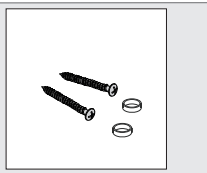
### Basin



### Fixed Accessories



$\phi$  8 X 1.6"

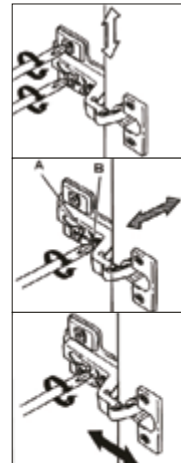
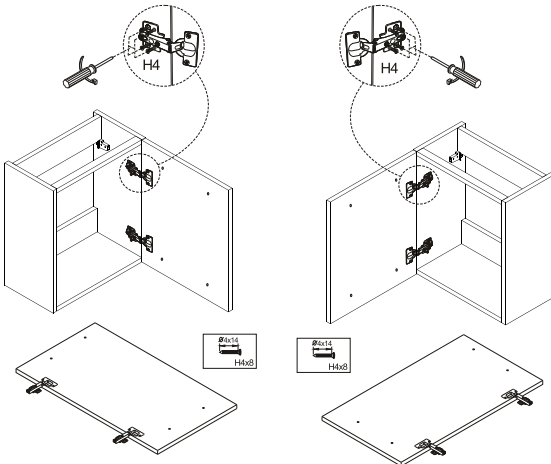


M4 X 2"

PAGE TO7-8

## Installation & Adjustment of door

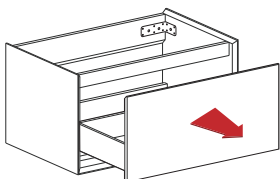
### Small cabinet



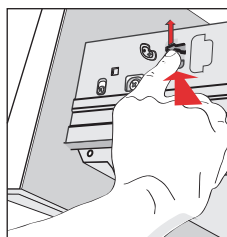
# Installation Instructions

## Wall mounted system

1

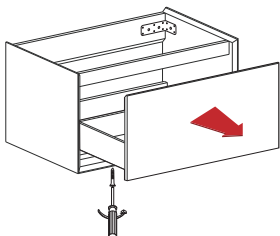


2



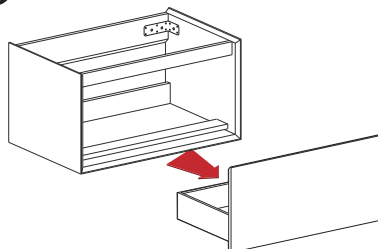
metal box

2



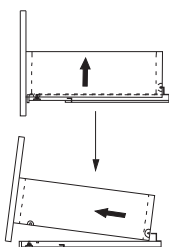
wooden drawer

3



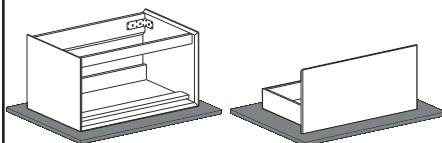
metal box

3

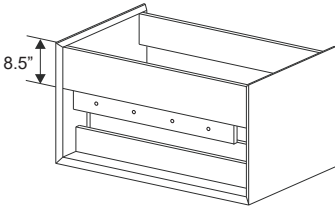


wooden drawer

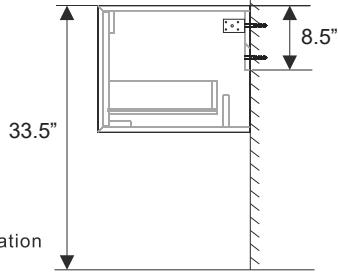
4



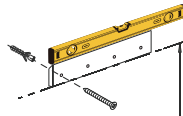
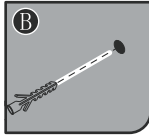
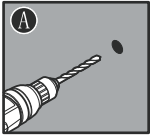
1



Recommended height of installation

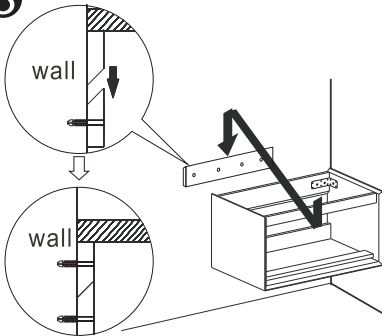


2

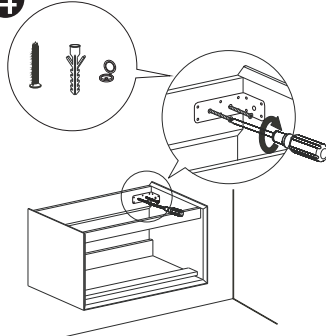


635mm

3



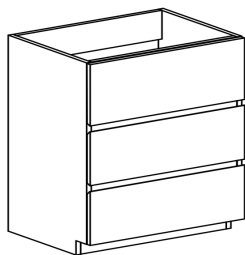
4



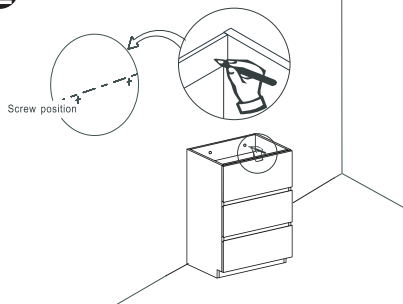
# Installation Instructions

## Floor standing system

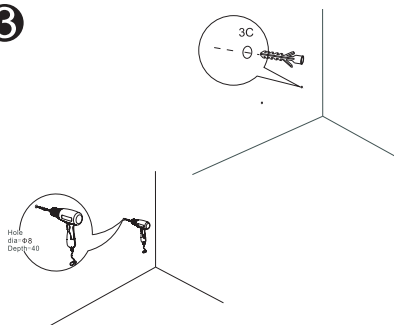
1



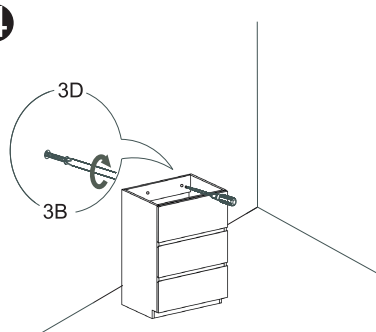
2



3

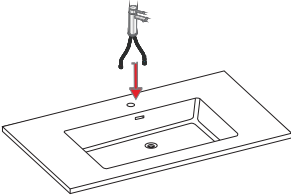


4

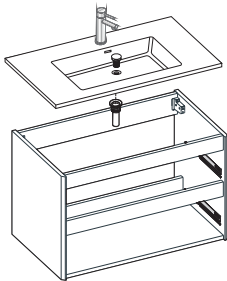


# Installation Instructions

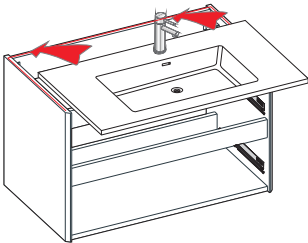
1



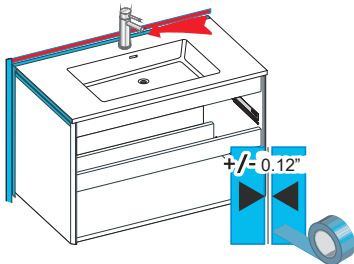
2



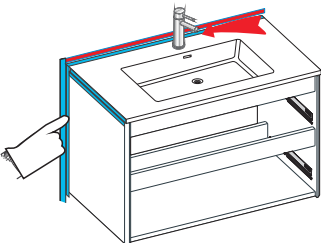
3



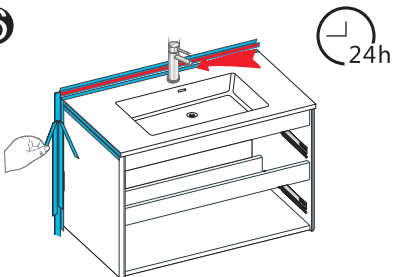
4



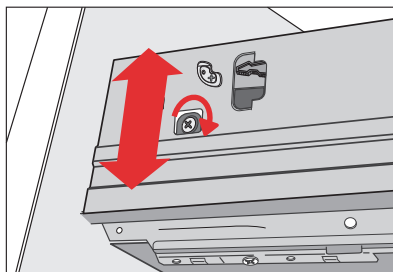
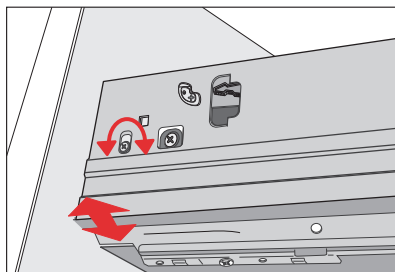
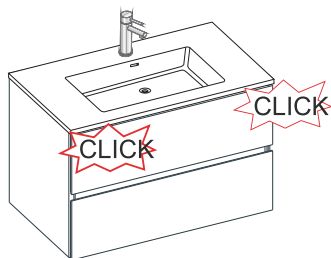
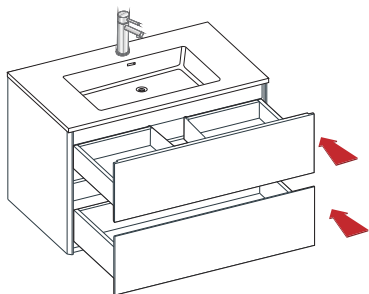
5



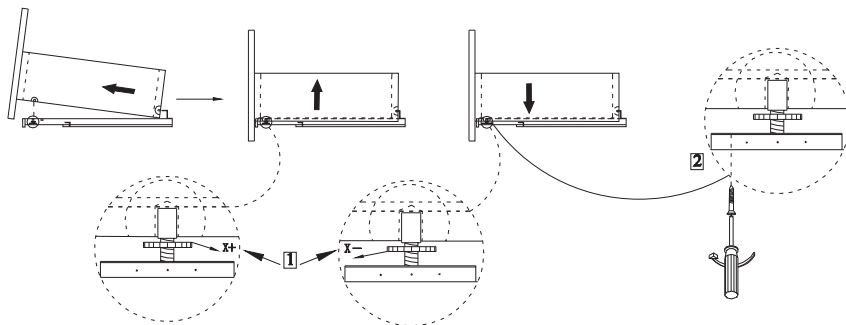
6



# Installation & adjustment of drawer



metal box



wooden drawer

# The way to take off the drawer

