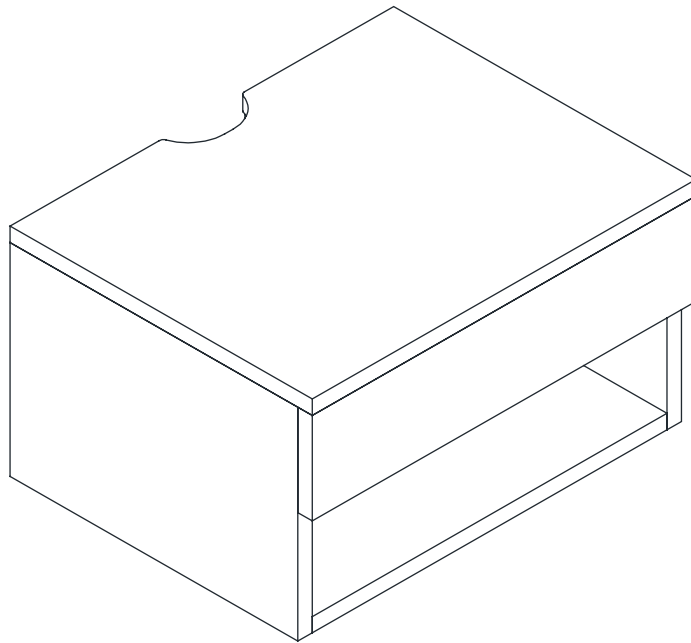


Let's build the

Side Table



Ok, let's get rolling

This should be easy, just follow our instructions and you will be back to Netflix in no time.

Estimated time for assembly



70:00

What you need

- Some of your favourite bubbly or your preferred relaxant
- Use the packaging carton as a working surface to prevent product damage during assembly
- Phillips head screwdriver
- Drill
- 1/4" Drill bit or 5/16" drill bit

Weight Limitation



33

lbs for top

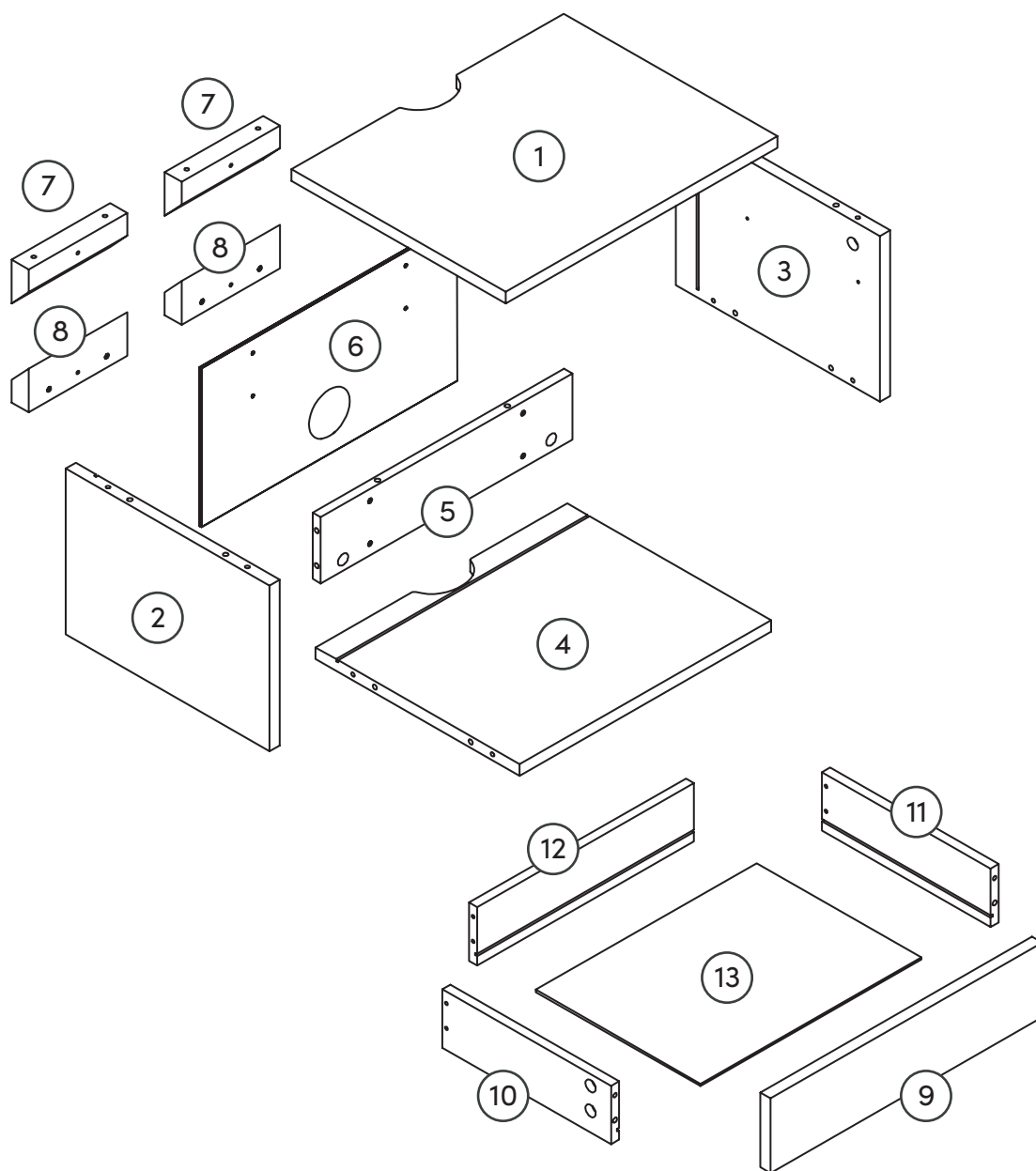
11

lbs for drawer

What's included

Description		Qty
1	Top Panel	1
2	Left Side Panel	1
3	Right Side Panel	1
4	Bottom Panel	1
5	Back Stretcher	1
6	Back Panel	1
7	French Cleat for Cabinet	2
8	French Cleat for Wall	2
9	Drawer Front	1
10	Drawer Left Side	1
11	Drawer Right Side	1
12	Drawer Back	1
13	Drawer Bottom	1

The goods



IMPORTANT

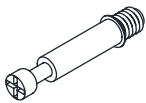
1. Do not tighten bolts / screws completely until all bolts / screws are lined up and inserted into holes.
2. Please use hand tools for assembly. Do not over tighten screws and bolts to avoid stripping.

What's included

Description		Qty
A	M6*35mm Cam Bolt	18
B	15x9.5mm Cam Lock	18
C	M6*30mm Wooden Dowel	12
D	M4*30mm Screw	8
E	M3*12mm Screw	8
F	Left Side Panel Slider (CL)	1
F	Right Side Panel Slider (CR)	1
F	Right Side Drawer Slider (DR)	1
F	Left Side Drawer Slider (DL)	1
G	M4*50mm Screw (for Non-Drywall anchor)	4
H	M6*30mm Anchor for Non-Drywall	4
I	Drywall Anchor	4
J	M4*70mm Screw (for drywall anchor)	4
K	PVC Sticker	4
L	Mounting Installation Template	1

The goods

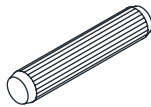
A



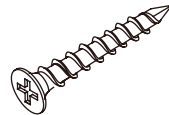
B



C



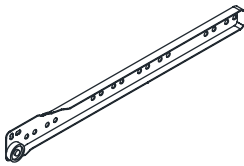
D



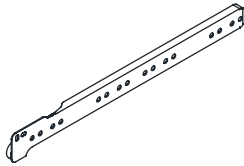
E



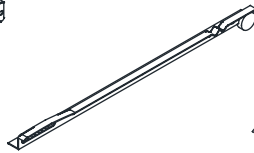
F (CL)



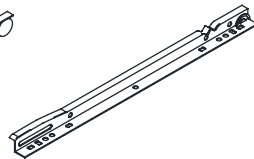
F (CR)



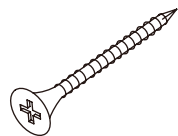
F (DR)



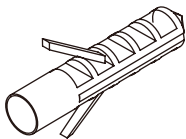
F (DL)



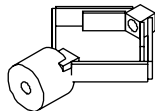
G



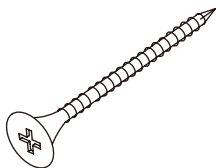
H



I



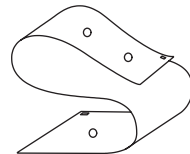
J



K

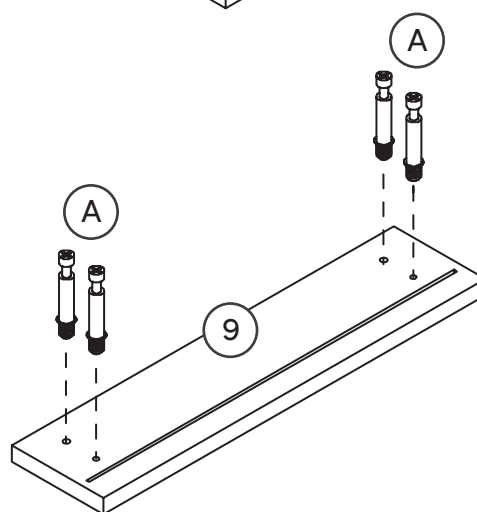
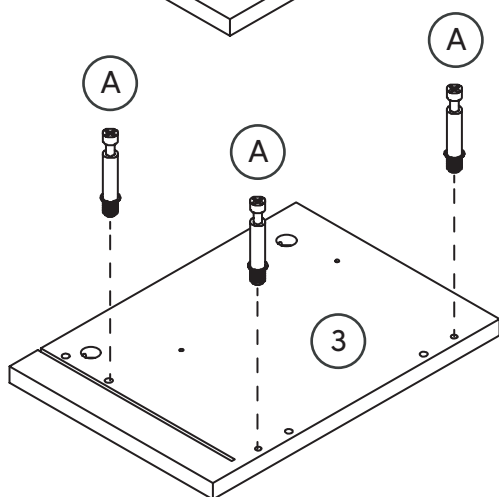
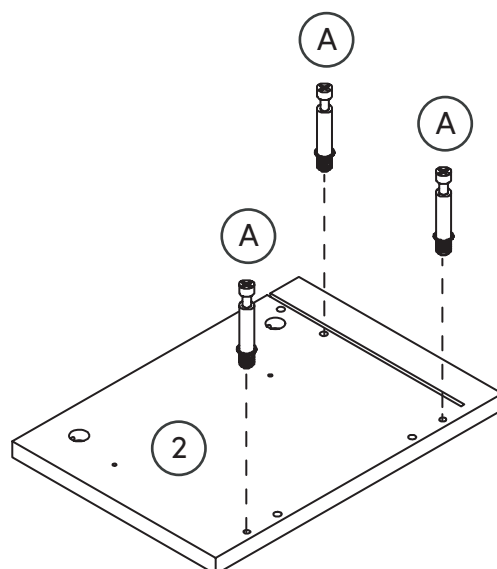
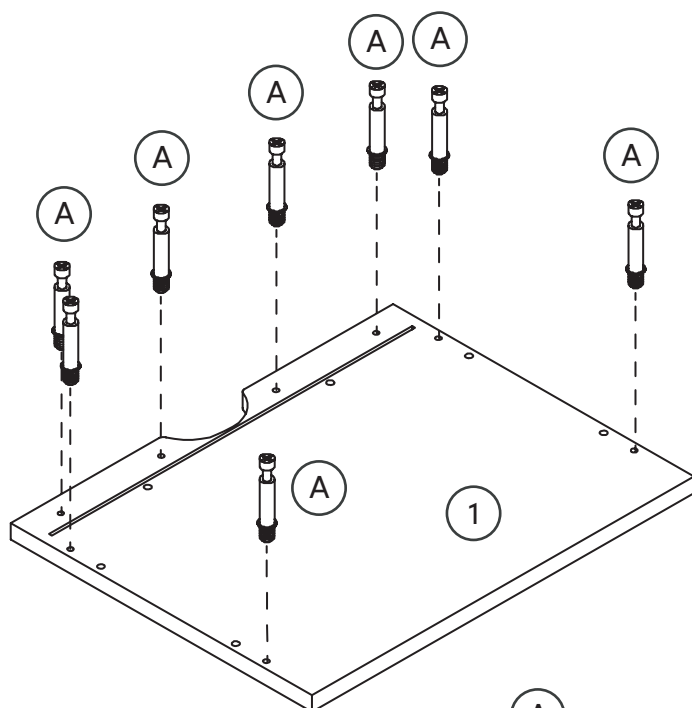


L



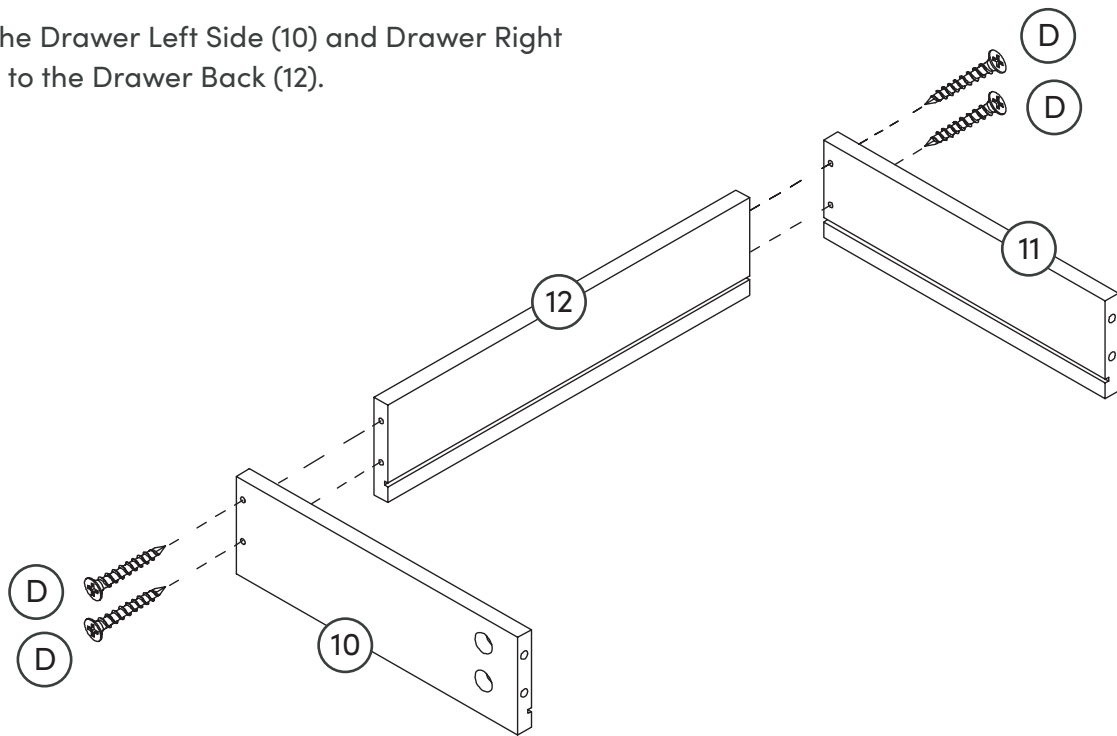
Step 1

Let's get this thing fired up! Lay down packaging carton or use carpet as a working surface. We apologize in advance for how sore your hands might get after these instructions. But, it'll be worth it!



Step 2

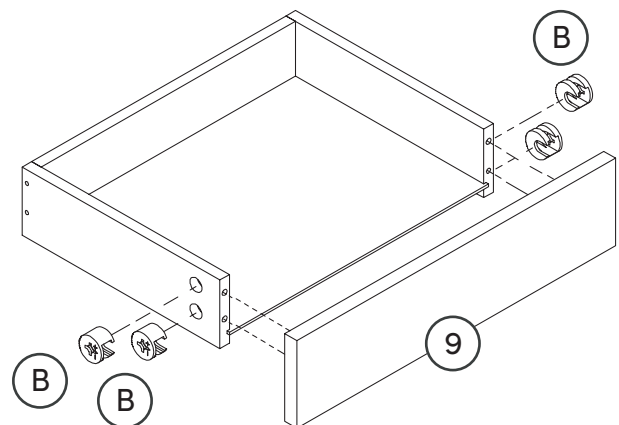
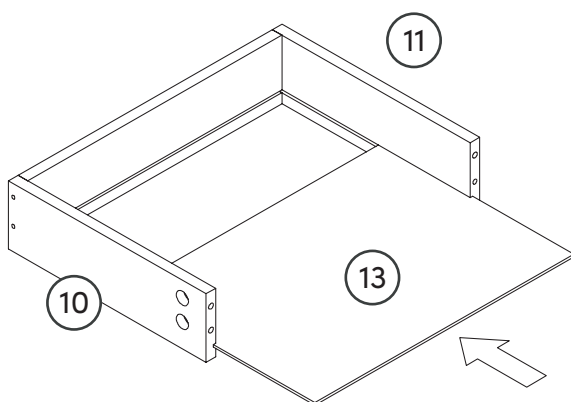
Attach the Drawer Left Side (10) and Drawer Right Side (11) to the Drawer Back (12).



Step 3

To finish up the drawer, slide in the Drawer Bottom (13). Then attach the Drawer Front (9) using the 15*9.5mm Cam Locks (B) to secure in place.

See the following page for instructions on how to use cam locks.



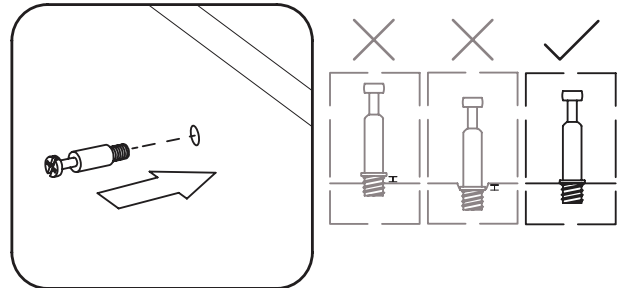
How to use cam locks

Did you know?

Cam locks are used to join two panels together, usually the edge of one to the flat side of another.

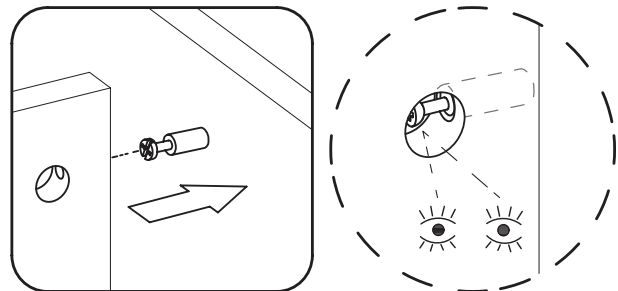
First, your cam bolt (or cam pin) will need to be properly inserted into the flat side of the board.

Important Note: Only tighten the cam bolt until it is secure. Do not over-tighten.



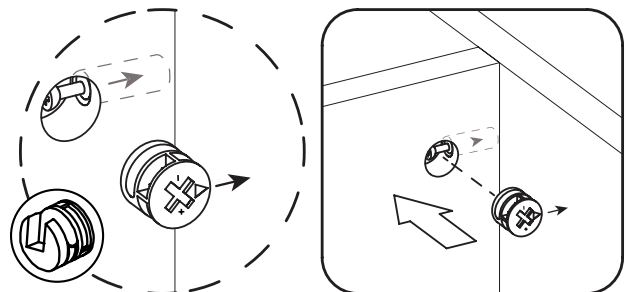
Next, you will fit the proper hole on the edge of the associated joining panel over the cam bolt.

Important Note: When installed properly, the head of the cam bolt will be visible through the larger hole on the side of the joining panel.



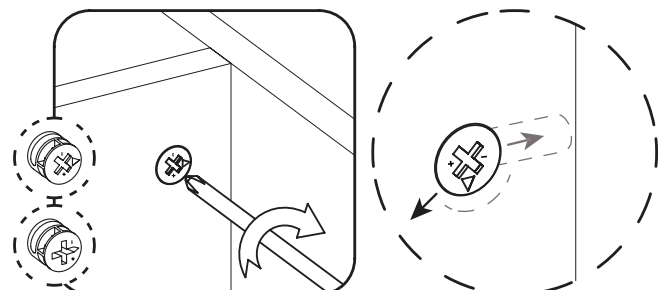
Next, you will notice the cam lock has a “C” shaped back. Commonly, an arrow on the front of the cam lock points in the same direction as the open section on back.

Using these as your cue, insert the cam lock into the large hole so the opening of the “C” fits over the head of the cam bolt.



Using a screwdriver, you will turn the cam lock until it stops, usually between 130° or 180°. You will feel the panels pulling closer until they are secured.

Important Note: Only turn the cam lock until the panels are fully engaged & feel secure. Turning too far may lead to hardware failure.



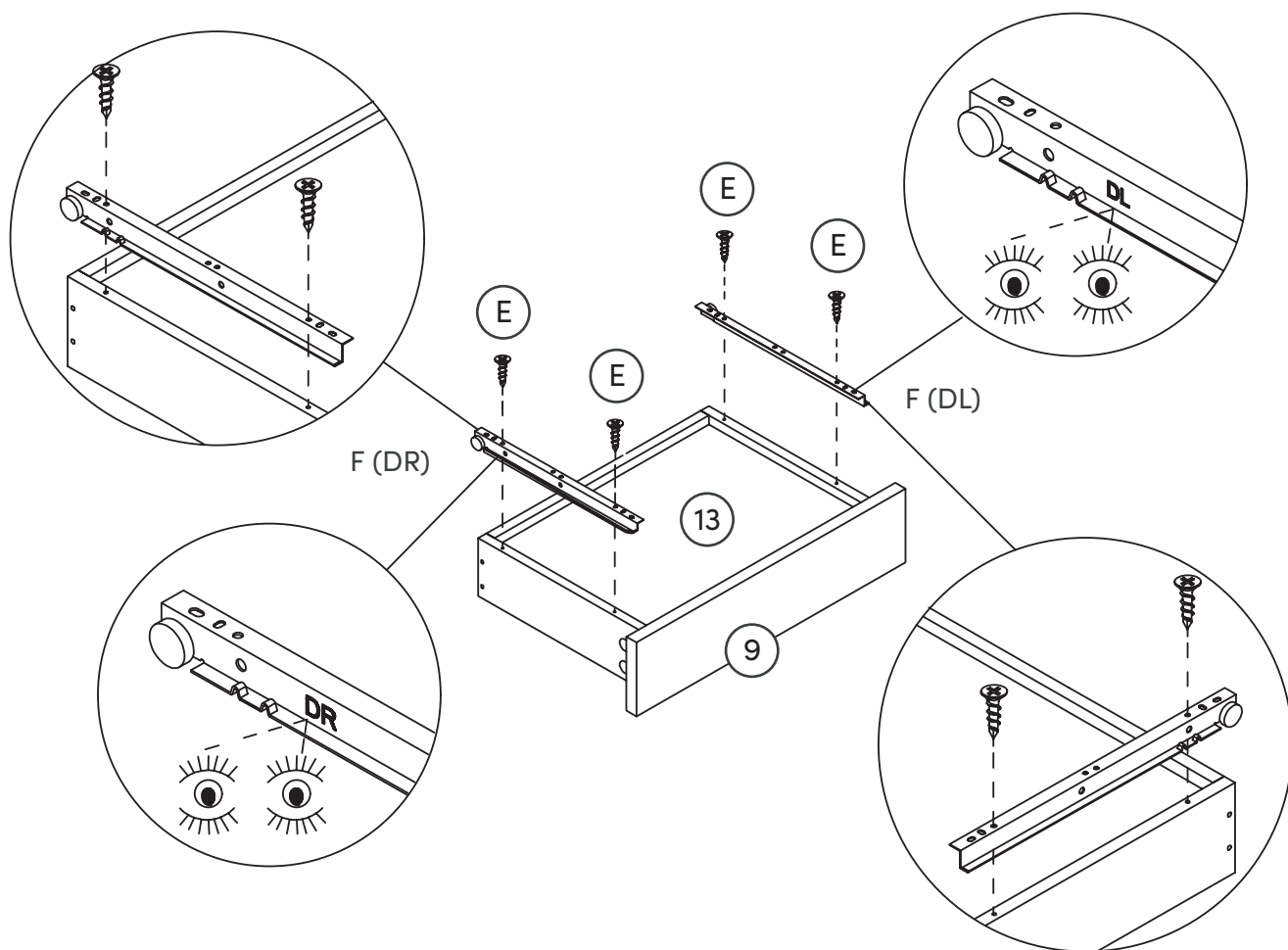
Still having issues?

If a cam lock seems to be spinning in place or is not “catching” or pulling the panels together as expected, first remove the cam lock & try again while making sure that everything is properly positioned & oriented .

If you are still having issues getting things working as expected, first remove the cam lock then unscrew the cam bolt slightly (less than 1 complete turn) to see if that helps with the alignment of the cam lock & bolt .

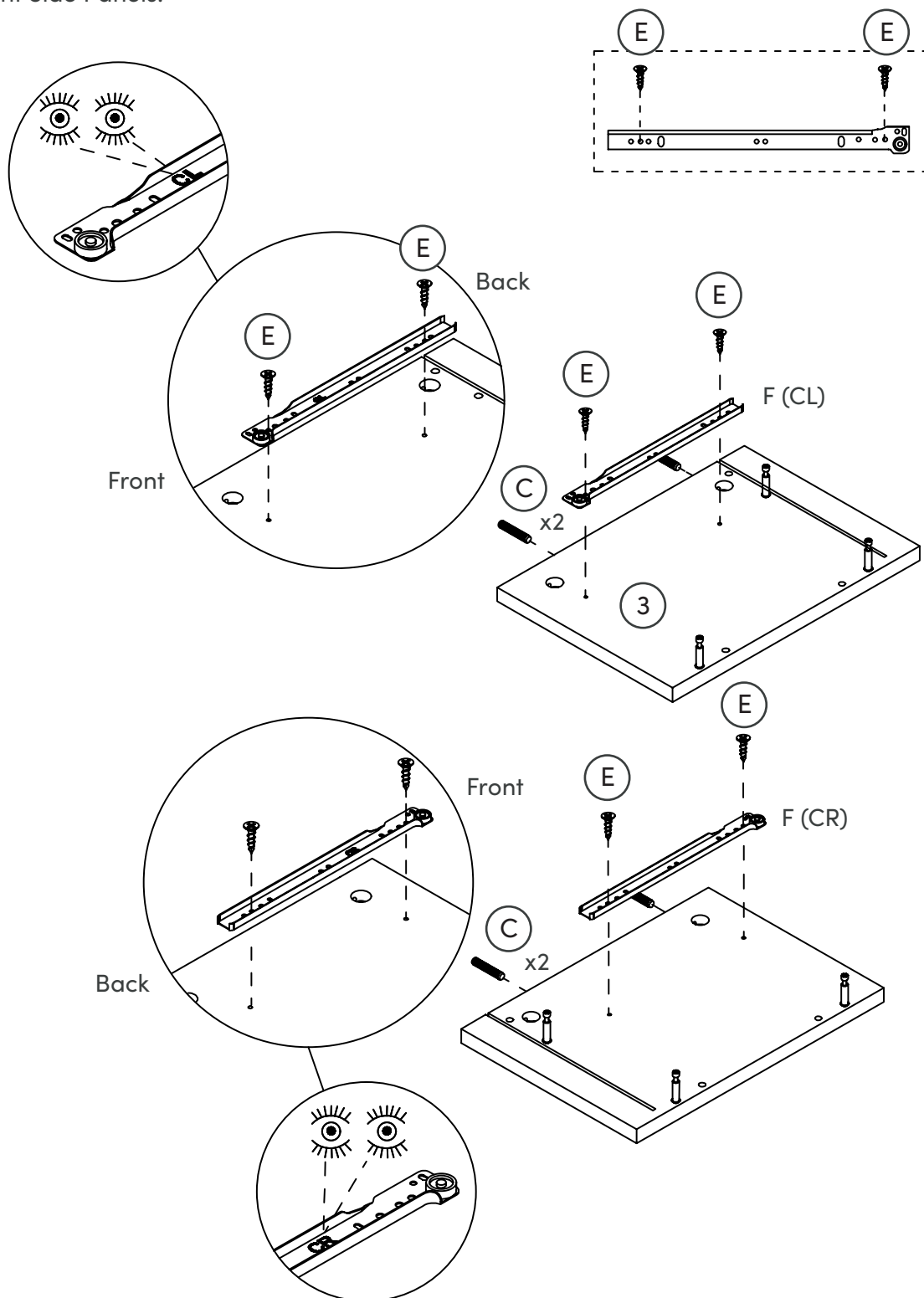
Step 4

Get those Drawer Sliders out and let's finish this drawer! Tip from a friend to a friend: pay careful attention that your sliders are on the correct way - look for the DR and DL markers!



Step 5

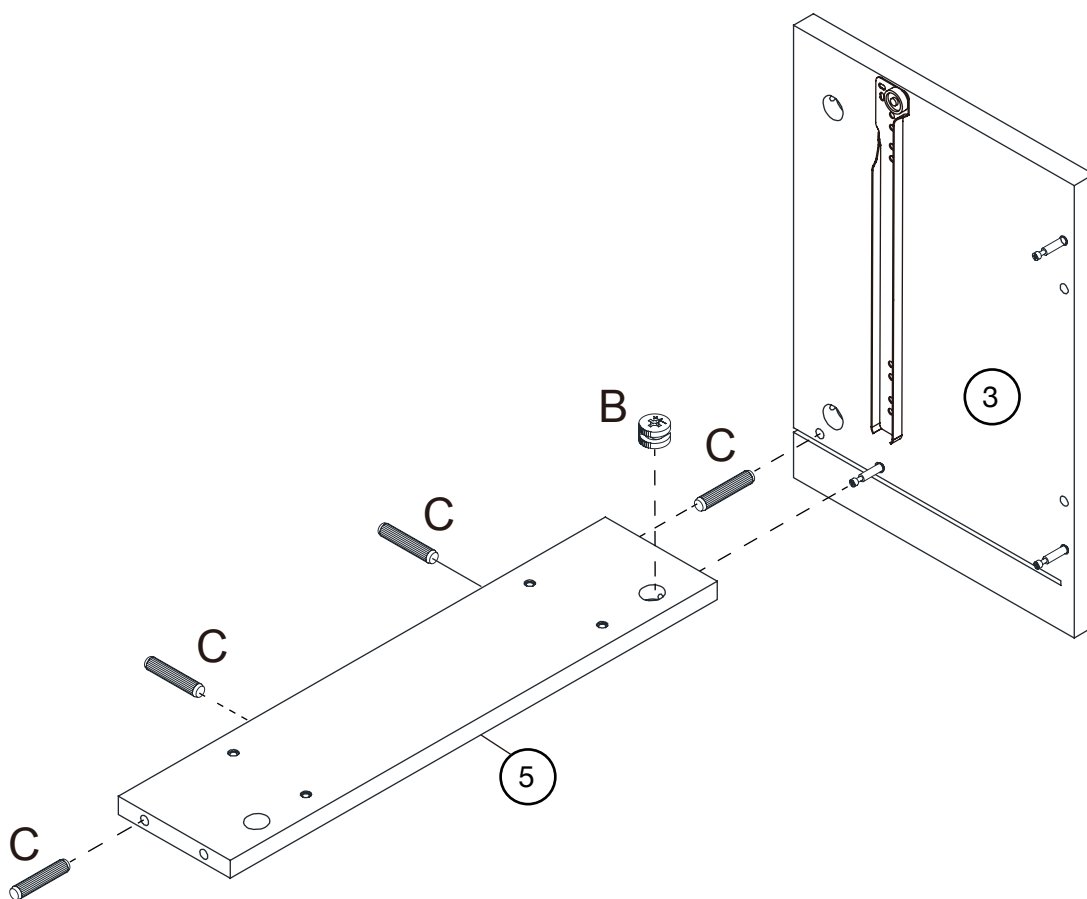
This graphic looks intense, but trust us, it's easy!
Secure the Left Side Panel Slider F(CL) and Right
Side Panel Slider F(CR) to the (you guessed it!) Left
and Right Side Panels.



Step 6

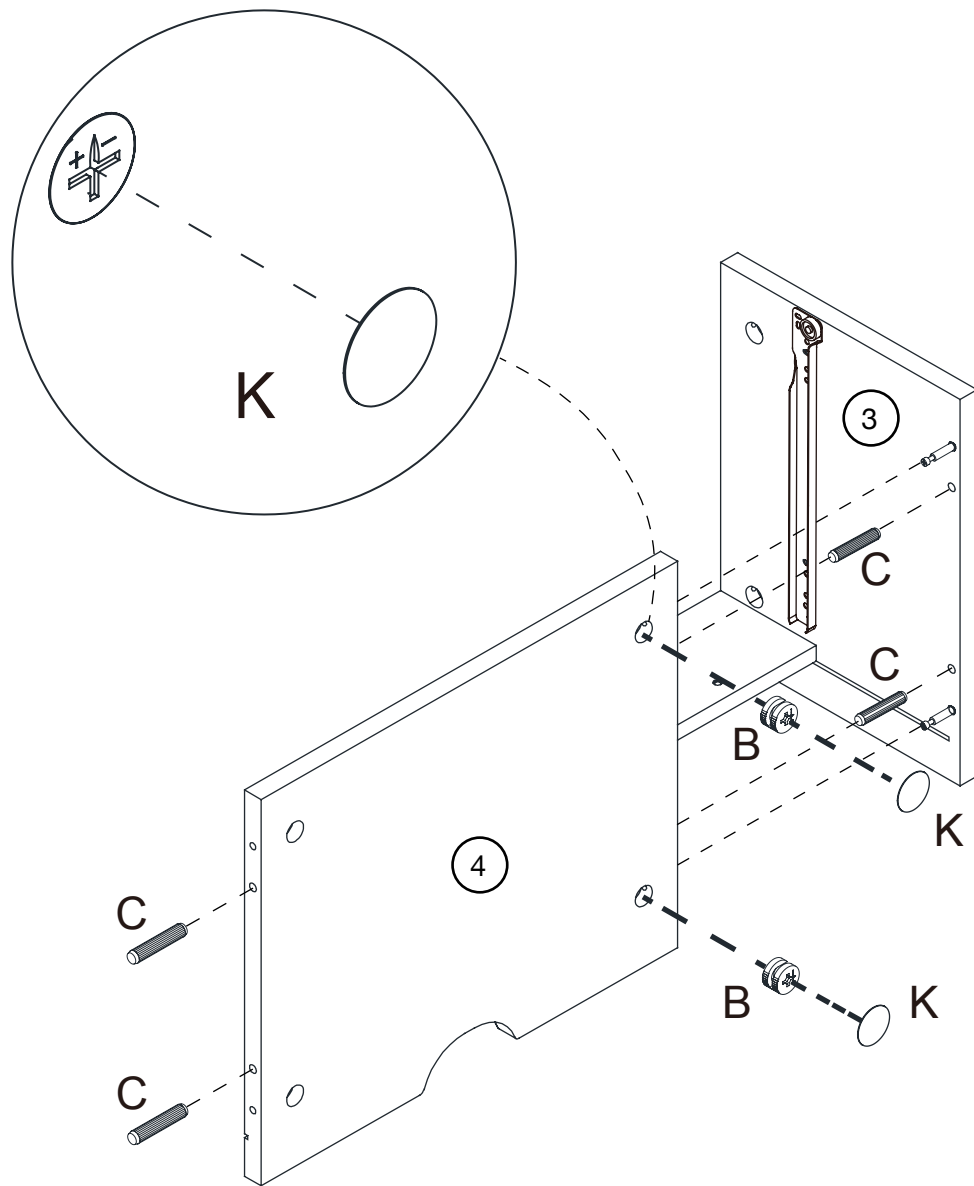
I know we're only on Step 6 out of 16, but we feel like now would be a good time to take a snack break. There's nothing worse than furniture building and being hangry.

Once you're back, secure the Back Stretcher (5) to the Right Side Panel (3).



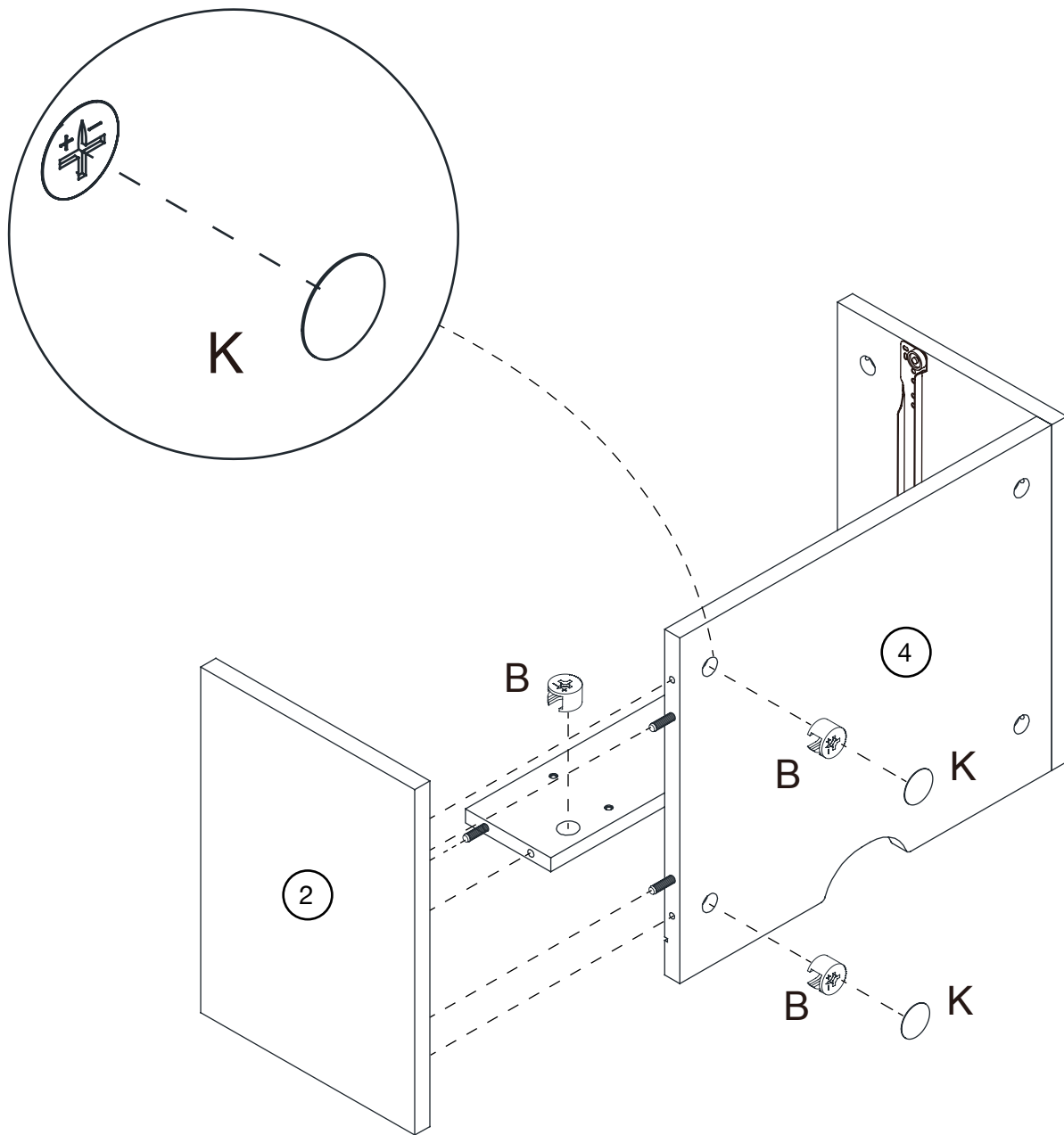
Step 7

Take what you've built so far from Step 6 and attach the Bottom Panel (4). Don't forget to cover the Cam Locks (B) with the PVC Stickers (K)!



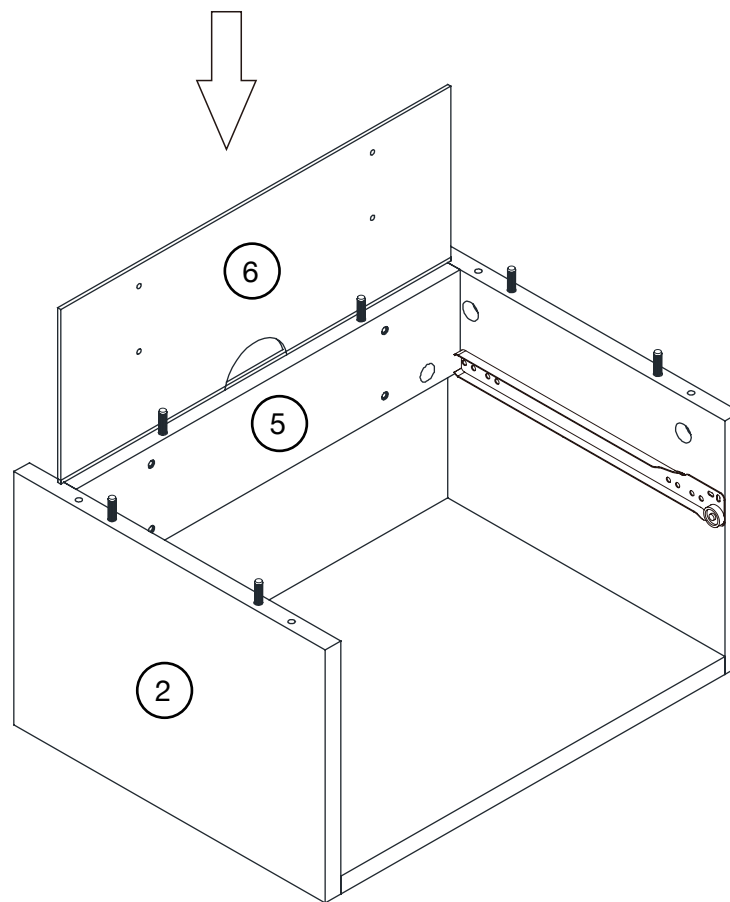
Step 8

Attach the Left Side Panel (2) and continue placing the PVC Stickers (K) over the Cam Locks (B).



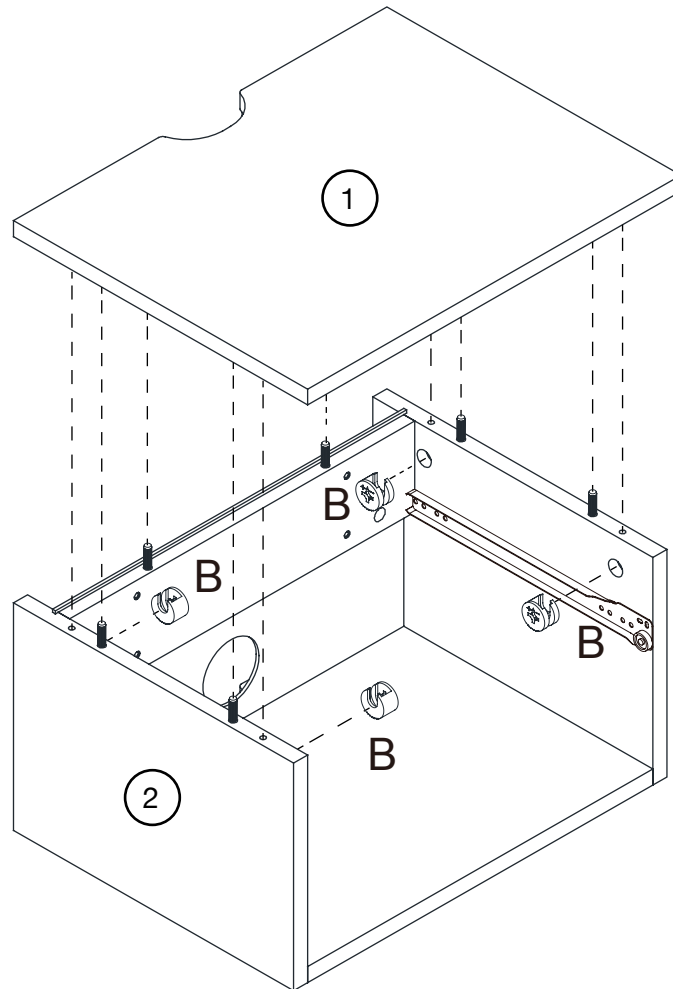
Step 9

Slide on the Back Panel (6).



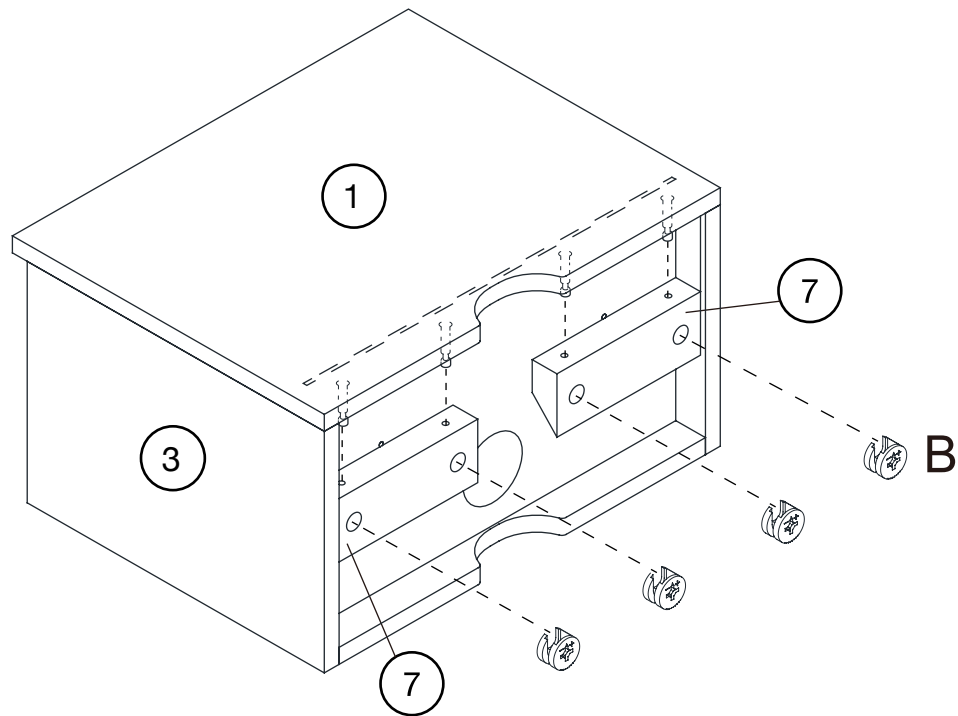
Step 10

Secure the Top Panel (1).



Step 11

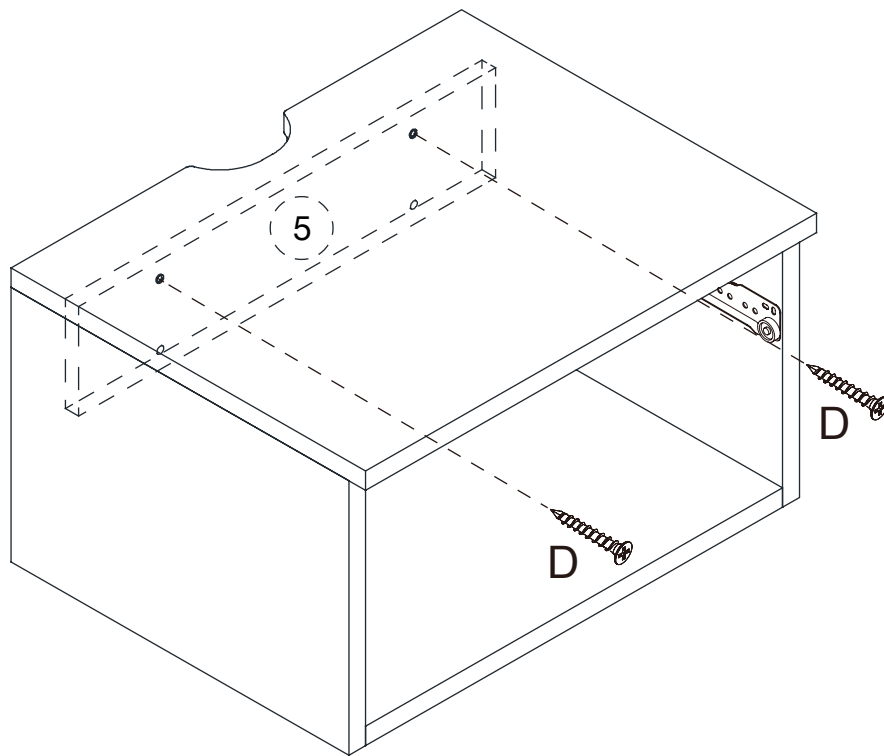
Turn the unit around and secure the French Cleat for Cabinet (7) pieces by lining up the Cam Bolts and Cam Locks and tightening.



Step 12

Reach in the back and secure the Back Stretcher (5) with the M4*30mm Screws (D).

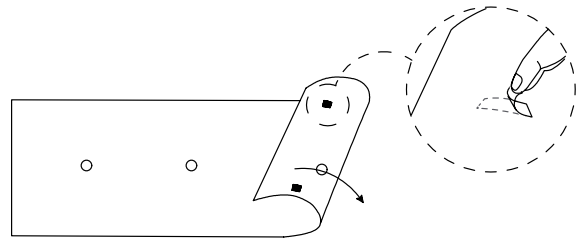
How's that snack tasting? We hope it's giving you enough energy to complete 4 more steps!



Step 13: Using the Mounting Installation Template

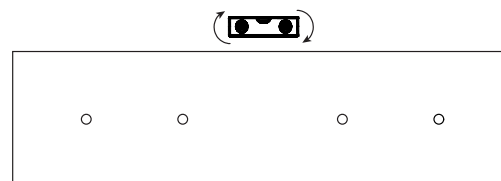
Unroll it

Unroll the paper Mounting Installation Template (L) and remove the adhesive backing at the corners.



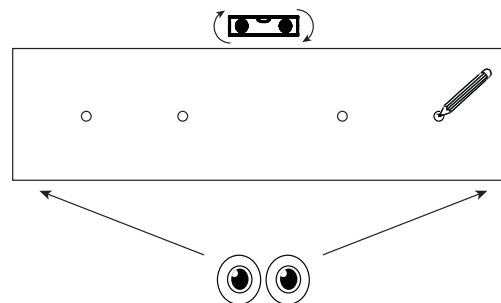
Place it

Locate where you would like to mount the side table and apply the Mounting Installation Template (L) to the wall in that location. Make sure the template and holes are level.



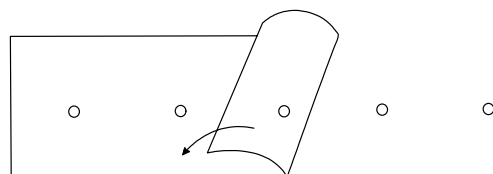
Mark it

Using the holes in the template and the metal rail as a guide, mark the location of each hole on your wall. These will become your guides as to where to drill holes for the wall anchors.



Remove it

Slowly remove the paper, ensuring that all holes have been marked.



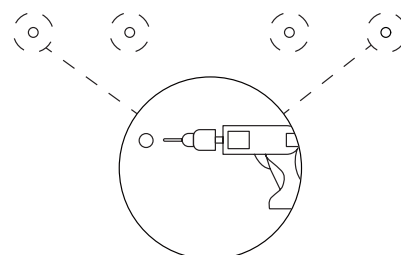
Drill it

Drill each hole to the suggested size.

Important Note:

Non-drywall = 1/4" drill bit

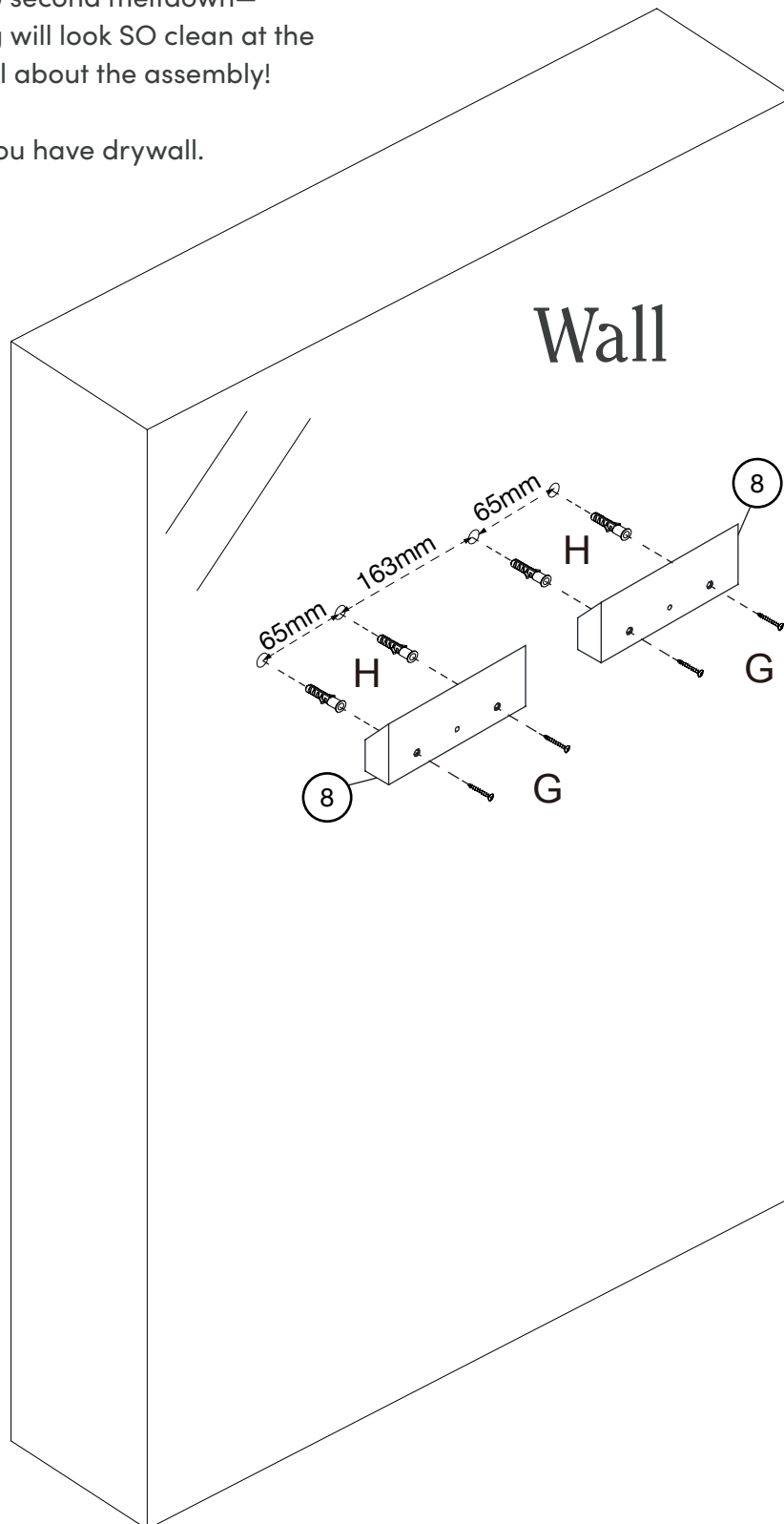
Drywall = 5/16" drill bit



Step 13: Non-drywall

At one point, you may find this step tricky,
but it's worth the 20 second meltdown—
because everything will look SO clean at the
end...you'll forget all about the assembly!

Skip to Page 20 if you have drywall.

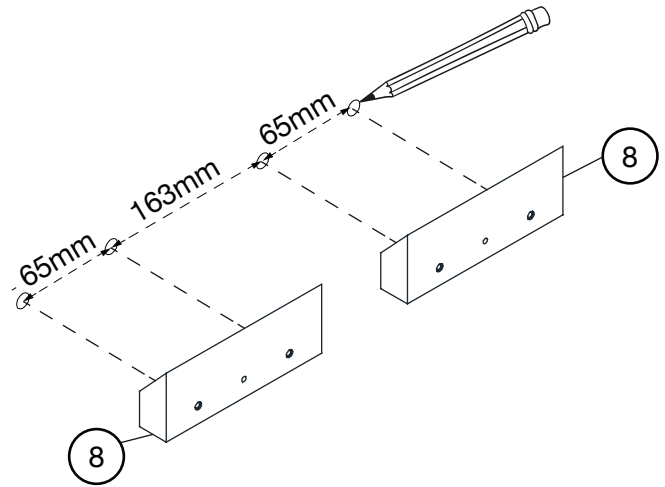


Step 13 (cont.)

Non-drywall application

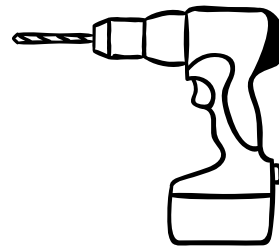
Mark it

Choose your desired location on the wall and use a pencil to mark where the anchors will go.



1/4" Drill bit

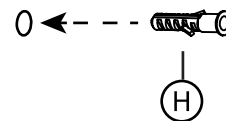
Following the marks you just made, with a 1/4" drill bit, drill 4 holes into the wall.



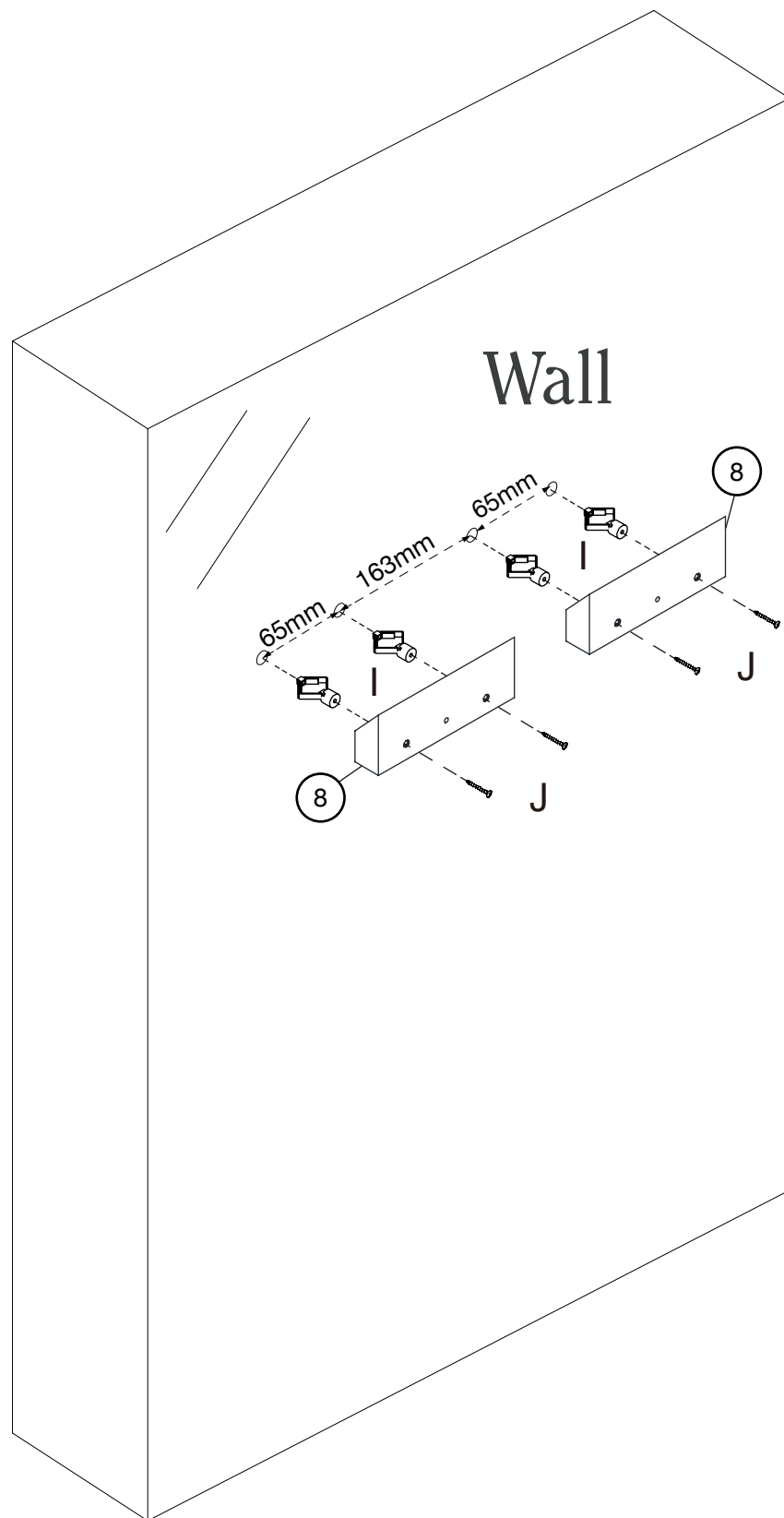
Insert the anchors

Go ahead and tap the wall anchors into place in the new holes that you just drilled.

If you're feeling strong, just go ahead and push it in.



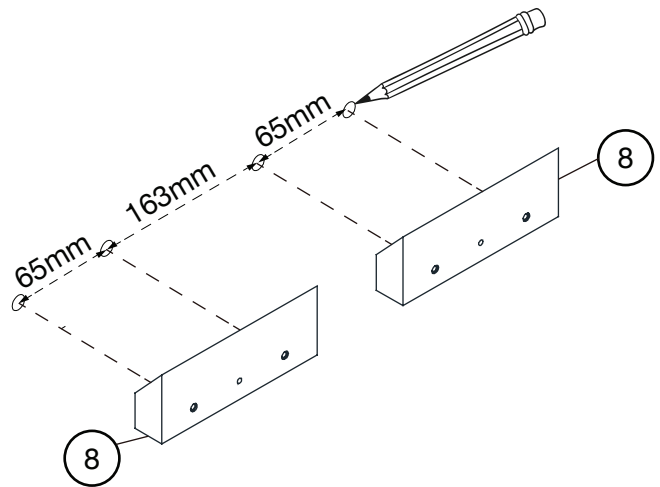
Step 13: Drywall



Step 13 (cont.) Drywall application

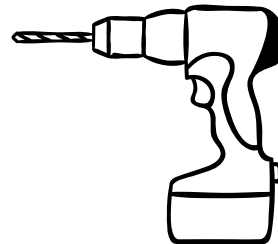
Mark it

Choose your desired location on the wall and use a pencil to mark where the anchors will go.



5/16" Drill bit

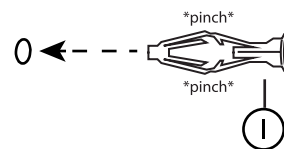
Following the marks you just made, with a 5/16" drill bit, drill 4 holes into the wall.



Insert the anchors

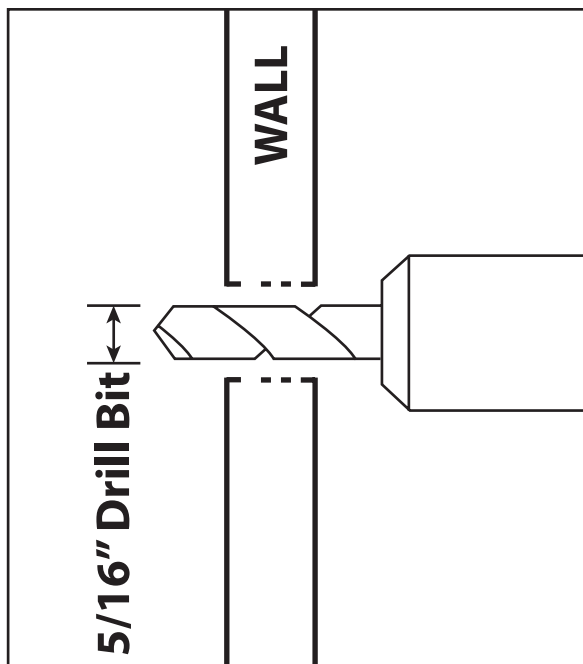
Go ahead and tap the wall anchors into place in the new holes that you just drilled.

If you're feeling strong, just go ahead and push it in.

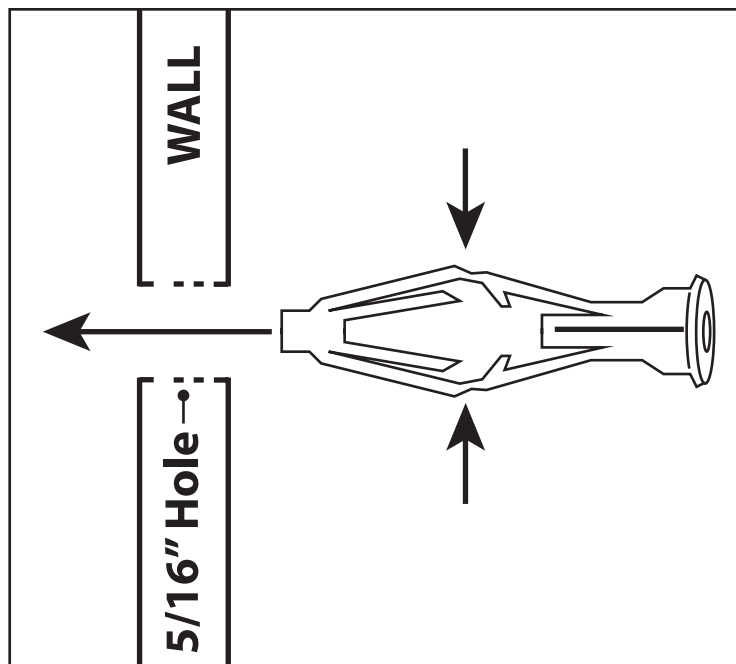


Step 13 (cont.)

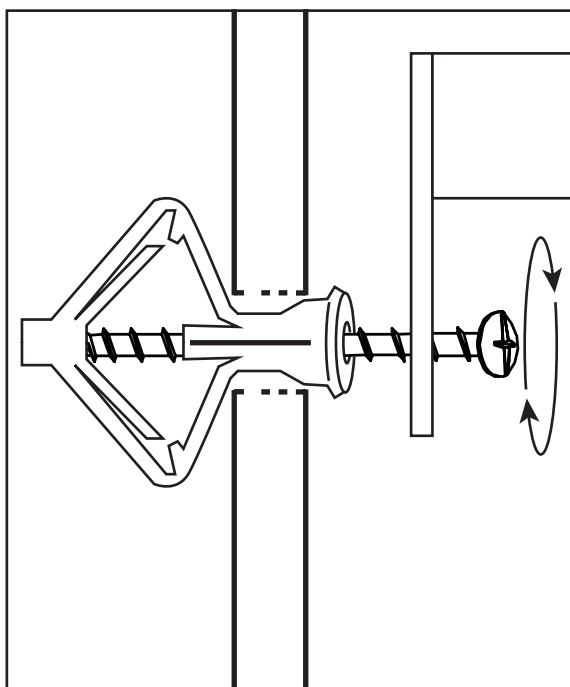
How to use drywall anchors



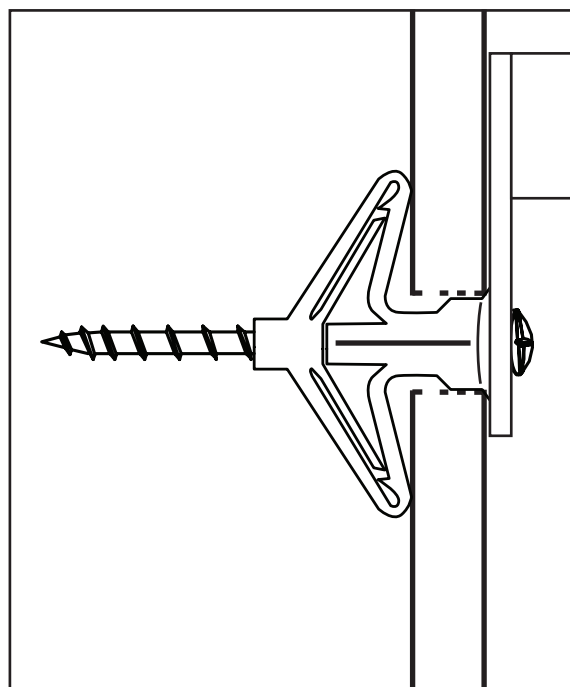
1. Drill hole with 5/16" bit



2. Pinch and insert



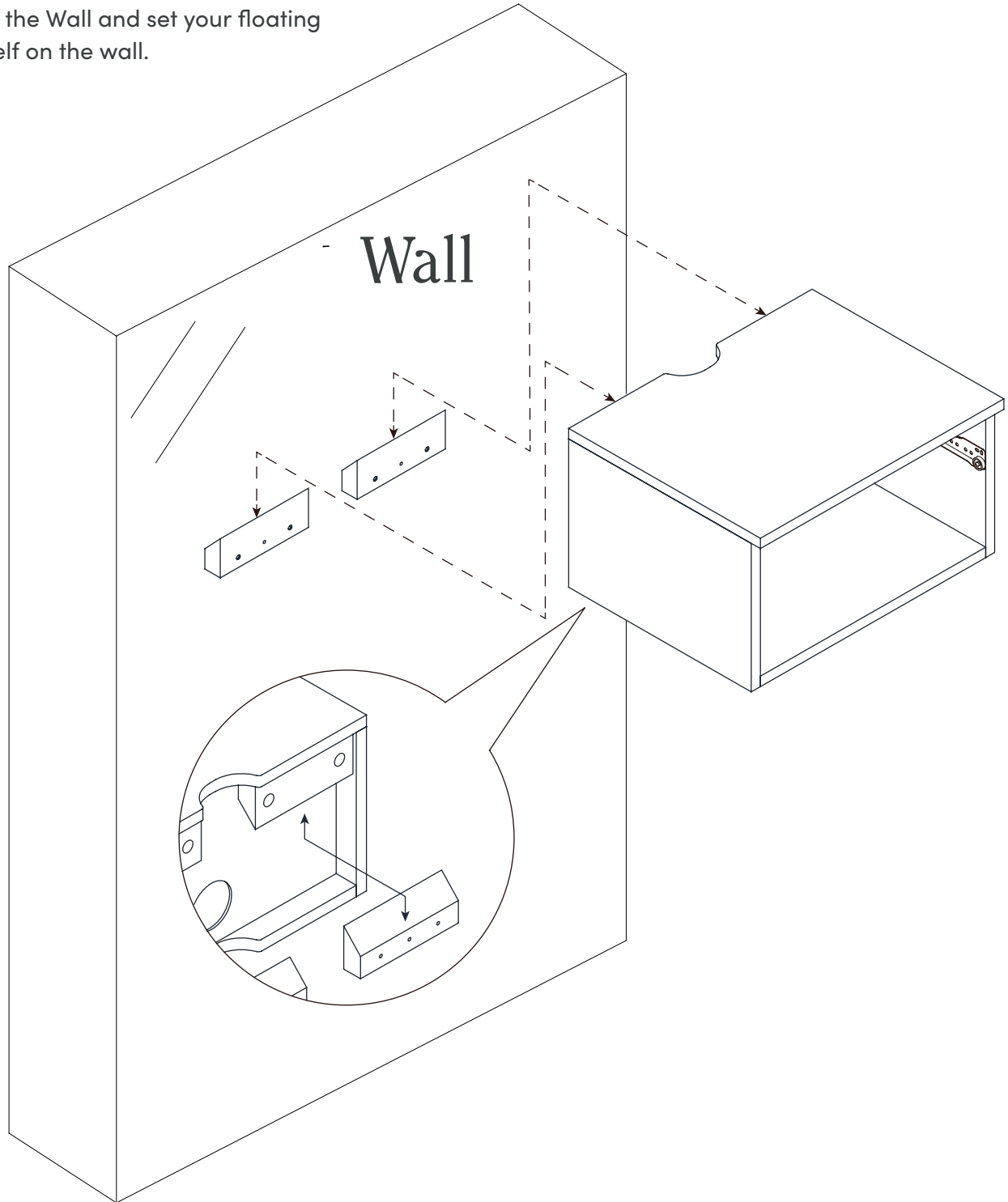
3. Begin tightening



4. Tighten to 100%

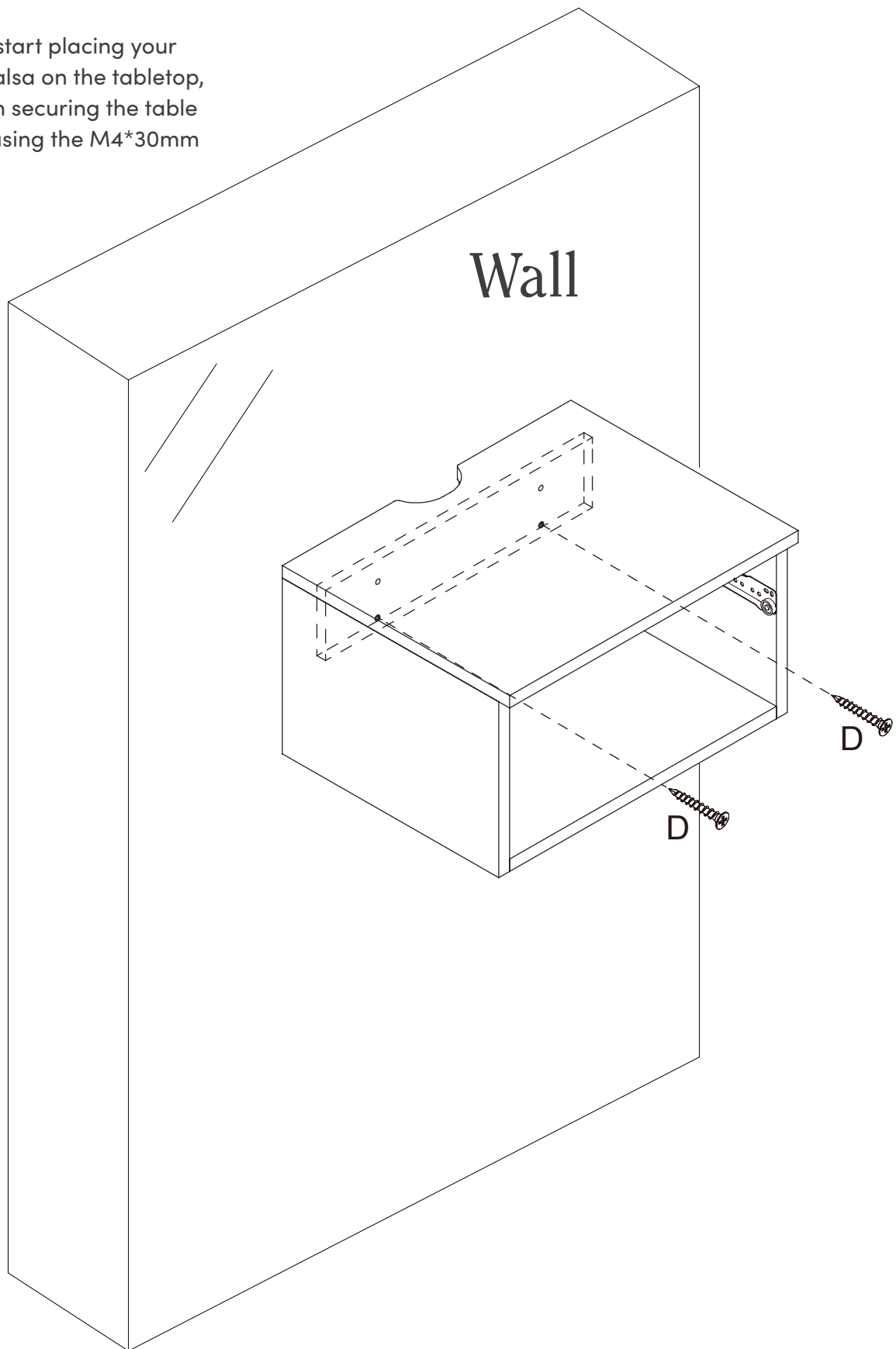
Step 14

Now that the wall is prepped, line up the French Cleat for the Cabinet with the French Cleat for the Wall and set your floating shelf on the wall.



Step 15

Before you start placing your chips and salsa on the tabletop, please finish securing the table to the wall using the M4*30mm Screws (D).

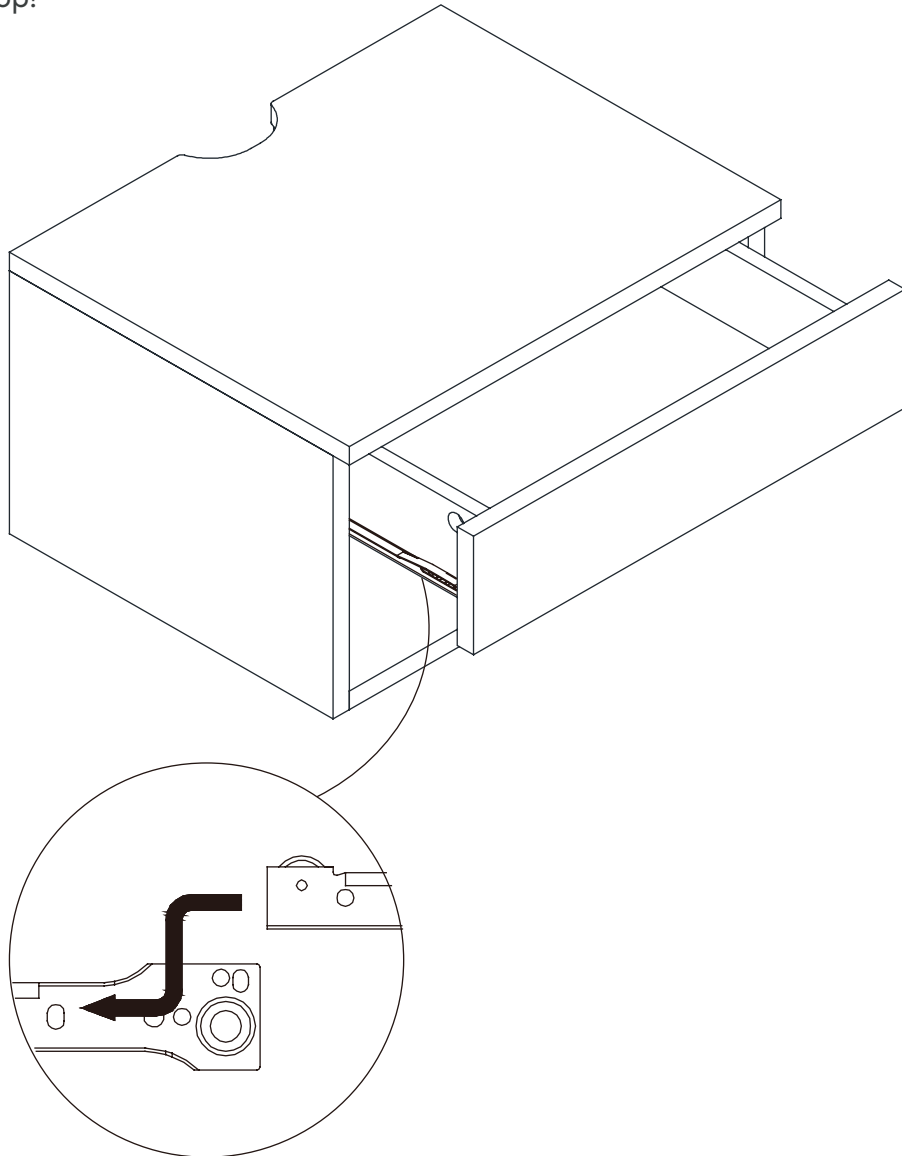


Step 16

This may be our favorite step of all (because it's the last step!).

Line up the drawer sliders and carefully push your drawer in.

Okay, now you can place your chips and salsa on top!



No heartburn, when we handle the return

Our way



Give us a call



Replacement



You

Their way



Re-package item



Schedule pick up



Track package



Replacement



You

We really don't want you to go through the hassle of re-packaging your item and sending it back, because let's be honest...nobody has time for that.

Safety first, fun later

We want your Side Table to last as long as possible, so we recommend that you tighten the screws 2 weeks after assembly and for added safety check the tightness of all screws every 2 months.

Safe use of this product starts with you.

Use this side table responsibly with the primary concern for your safety. Follow assembly instructions carefully and inspect product upon receipt and each use.

We and its parent companies cannot be held legally responsible for any injuries or death resulted from failure to follow instructions or improper use of this product.

Do not modify the structure of this product in any way.

Our products have been tested to meet specific safety measures as they were originally intended to be sold. Any modifications will present the risk of creating significant safety issues which we will not be responsible for.

Proper use

- | | |
|---------------|------------------------------------|
| DO NOT | use for commercial purposes |
| DO NOT | climb on side table |
| DO NOT | exceed weight limit |
| DO NOT | leave spilled liquid on side table |
| DO NOT | use if table is damaged or broken |
| DO NOT | make temporary repairs |
| DO NOT | use outdoors |