

# Dining Table



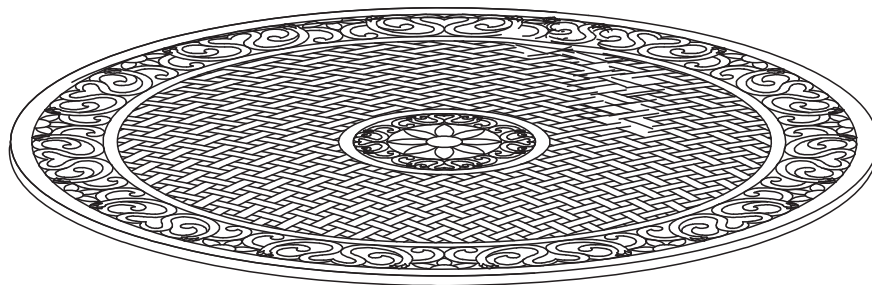
## IMPORTANT

Carefully remove all the parts from the carton and place them individually on a soft cloth to prevent scratches or other damage.

Carefully and strictly follow these assembly instructions to ensure a completed product as designed.

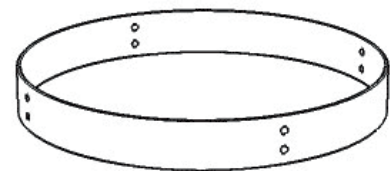
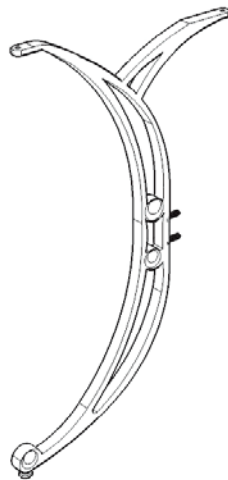
This product is made of aluminum. Do not use power tools above 8 volts to assemble and only tighten bolts until snug. Over tightening can damage the aluminum.

## Part List



A.  
Top  
1 pc.

B.  
Leg  
4 pcs.



C.  
Stretcher  
1 pc.

## Hardware List



Wrench  
1 pc.



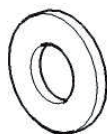
Spring Washer  
16 pcs.(+1 extra)



Nut  
16 pcs.(+1 extra)



M8x35  
Bolt  
8 pcs.(+1 extra)



Flat Washer  
16 pcs.(+1 extra)



Nut Cap  
16 pcs.(+1 extra)



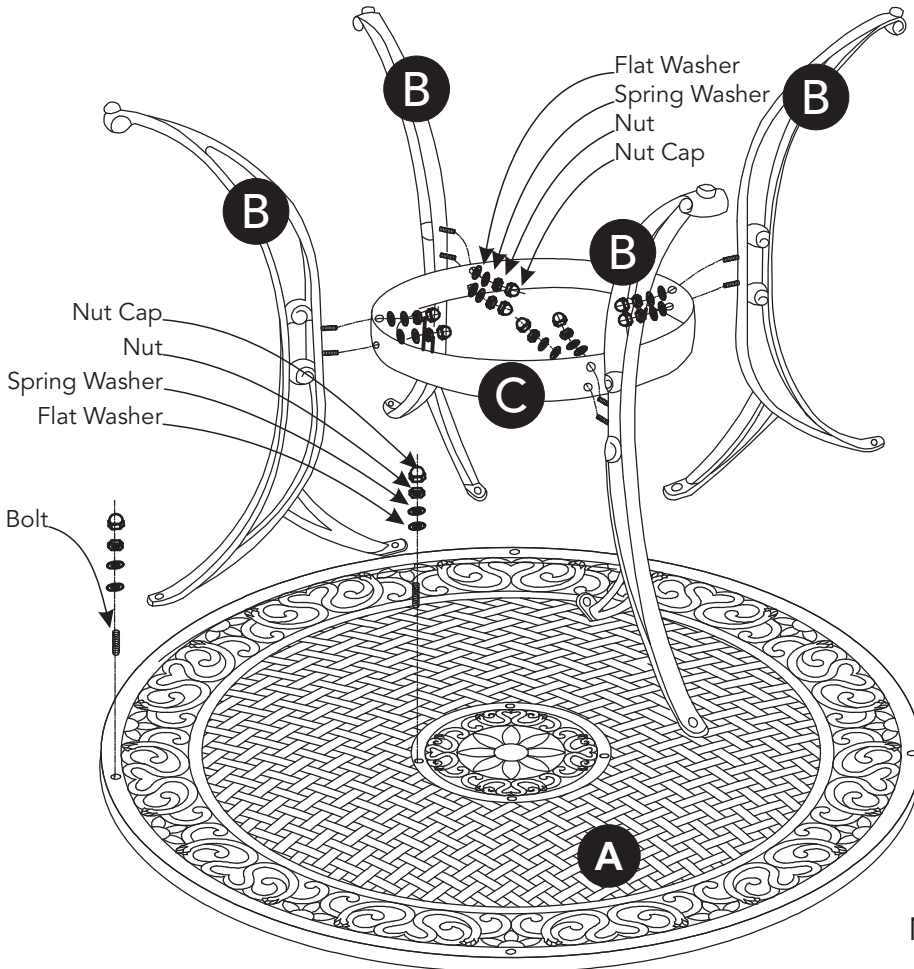
Cover  
1 pc.

Tool(s) required for assembly: Slotted screwdriver, Level

## Assembly Instructions 2/2

### IMPORTANT

- Use a soft cloth between these parts and the floor.
- Do not use power tools above 8 volts to assemble.
- Do not tighten all the bolts until each part is properly assembled.
- The unit must be level to work properly. Use the included adjustable levelers to level.
- Keep Wrench as the nuts may need to be tightened in the future.



### STEP 1

Place Top (A) upside down on a soft cloth.

Insert Bolts into pre-drilled holes in Top (A).

### STEP 2

Attach two adjacent Legs (B) to Top (A) with Flat Washers, Spring Washers and Nuts, tightening Nuts only halfway. (See Figure 1)

### STEP 3

Attach Stretcher (C) to unit with Flat Washers, Spring Washers and Nuts, tightening Nuts only halfway.

Attach remaining two Legs (B) to unit with Flat Washers, Spring Washers and Nuts.

Tighten all Nuts used in Step 2 and 3 with Wrench.

### STEP 4

Cover all Nuts with Nut Caps.

Turn table over to its' upright position.

Cover umbrella hole with Cover. (See Figure 2)

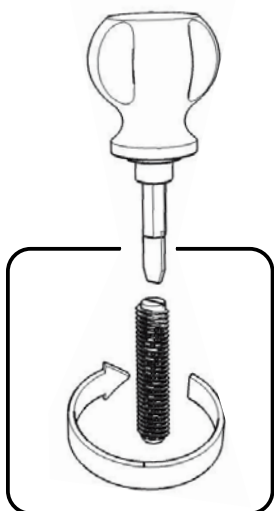


Figure 1

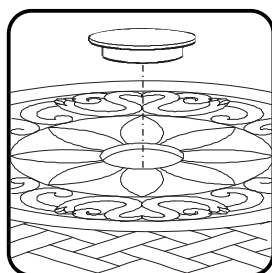


Figure 2

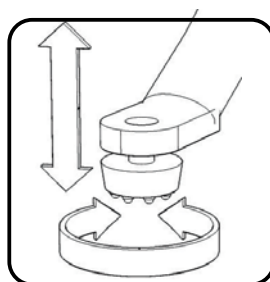


Figure 3

Level table by adjusting the adjustable levelers on bottom of legs. (See Figure 3)

# CARE INSTRUCTIONS

## NEVER

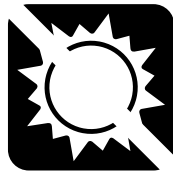
allow liquids to remain on furniture.  
Absorption causes parts to warp  
and split and finishes to delaminate.

## NEVER

use glass cleaners on  
finished furniture. Ammonia  
chemically attacks the finish.



Do not use power tools  
above 8 volts to assemble.  
**PREVENT  
CRACKING**



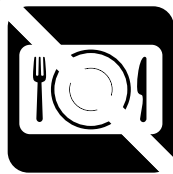
Do not place  
in direct sunlight.  
**PREVENT  
FADING**



Do not write  
directly on surface.  
**PREVENT  
MARKING**



Do not place hot  
objects on surface.  
**PREVENT  
FINISH DAMAGE**



Do not use rubber  
based placemats.  
**PREVENT  
DISCOLORING**



Do not use commercial  
waxes and polishes.  
**PREVENT  
YELLOWING**

## CLEAN

with a soft cloth moistened  
in lukewarm soap and water.  
Buff with a dry clean cloth.



We will provide replacements free of charge for missing or damaged hardware or parts within 30 days of purchase. Digital images of the defective parts may be required. If the product was not purchased from an authorized retail affiliate, we are under no obligation to provide replacement parts. Parts are not available for fully assembled items nor are parts available for sale. Replacements for missing or damaged hardware or parts may be requested.