

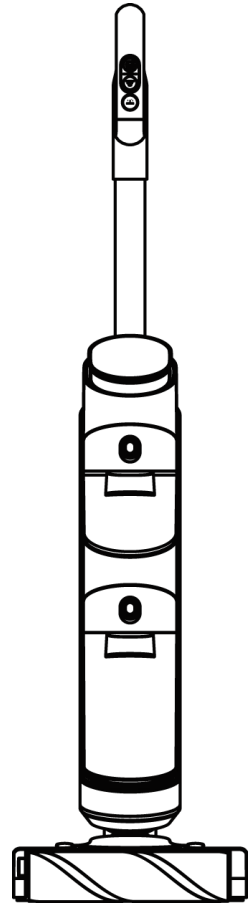
USER MANUAL



AIRTHEREAL

Model · V2

VACTIDE WET DRY VACUUM CLEANER



Please read this user manual in its entirety before use and keep it for future reference.

CONTENTS

SAFETY INSTRUCTIONS.....	02
SPECIFICATIONS.....	04
COMPONENTS.....	05
PRODUCT ASSEMBLY.....	07
PRODUCT OPERATION.....	07
ROUTINE CLEANING.....	12
TROUBLESHOOTING.....	14
LIMITED WARRANTY.....	15

SAFETY INSTRUCTIONS

IMPORTANT SAFEGUARDS: To avoid the risk of serious injury when using your Wet Dry Vacuum Cleaner, basic safety precautions must be followed, including but not limited to the following.

- This handheld floor washer is a household product. Not recommended to be used in industrial, commercial, or other extremely dirty conditions.
- To avoid the risk of electric shock, do not touch the plug or any live part of the product with wet hands.
- If the adapter or plug is damaged, please stop using it. Please call our professional maintenance personnel to replace it to avoid any harm.
- Please keep the air tunnel and operation part away from long hair, loose clothes, fingers, and other parts of the body. Do not put the vacuum tube, accessory suction head, or tools to the eyes or ears or put them into the mouth.
- Ensure that the Power Switch is in the OFF position before picking up or carrying the appliance. Do not lay flat or lean the appliance so as to prevent dirty water from entering into the motor.
- Do not charge or store the appliance outdoors or inside the car. Only charge, store, or use the battery in a dry indoor area where the temperature is higher than 39.2°F (4°C) but lower than 104°F (40°C). The charger is for indoor use only.
- When using the machine for the first time or after long-term storage, please fully charge the machine first.
- If the machine is not used for a long time, please ensure that it is charged at least every three months to maintain the battery's health.
- Do not use a battery pack or appliance that is damaged or modified. Damaged or modified batteries may exhibit unpredictable behavior resulting in fire, explosion or risk of injury.
- Do not expose a battery pack or appliance to fire or excessive temperature.
- This appliance contains battery cells that are non-replaceable. Do not modify or attempt to repair the appliance or the battery pack except as indicated in the instructions for use and care.
- Please use our original adapter to charge the unit. Other types of chargers may cause battery failure or extreme thermal effects.
- Children should not play with the appliance. Use, cleaning, and maintenance should not be performed by children without supervision.
- Always switch off the appliance before making any adjustments, changing accessories, or storing the appliance. Such preventive safety measures reduce the risk of starting the appliance accidentally.
- In case of electric leakage, motor overheating, abnormal sound, peculiar smell, and/or weak suction, stop using immediately and contact Airthereal customer support.
- Always clean the Dirty Water Tank after each use to avoid potential blockage, which may lead to low suction power, motor overheating, or reduce the service life of the appliance.

- Always clean the Dirty Water Tank after each use to avoid potential blockage, which may lead to low suction power, motor overheating, or reduce the service life of the appliance.
- Wipe with a dry cloth when cleaning the machine. Do not use gasoline or corrosive cleaners that can crack and discolor the shell.
- If the roller brush is clogged with wire, strings, or similar objects,, please shut the machine off immediately to remove the obstructions to avoid damage to the machine.
- After using the appliance, please clean the dirty water tank to keep the air tunnel unblocked, so you can maintain the service life of the product.
- The appliance body and the floor brush contain electric parts and cannot be washed with water.
- Please check the suction nozzle regularly. If there is any blockage, please remove it to avoid the decrease of suction, which will affect the performance of the appliance.

REASONABLE USE ENVIRONMENT OF PRODUCT

- This product is suitable for hard floors in an indoor environment, including waxed floor, stone floor, rubber floor, marble floor, granite floor, terrazzo floor, solid wood floor, composite floor, bamboo floor, and all kinds of mirror tiles, porcelain tiles, etc.
- To prevent roller brush damage please do not use the machine to clean sharp objects.
- The cleaning effect may be reduced If the product is used on an uneven surface.
- Do not use this product near or on the surface of inflammable or explosive objects.
- Do not use this product near a working fireplace or heater to prevent the risk of deformation of the product shell.
- Do not use this product to vacuum other cleaning fluids, kerosene, gasoline, alcohol, oil paint, perfume, etc., as that may cause short circuit, fire or explosion.
- Do not use this product to vacuum spilled toner of a laser printer or copying machine as that may cause fire or explosion.
- Please do not use the device on high-temperature substances (cigarette ends, matches or hot ashes, etc.), ultra-fine substances (such as lime, cement, sawdust, gypsum powder, ash, carbon powder, etc.), or large sharp fragments (such as glass), otherwise, the product may be blocked and the motor may burn out.

CLEANING SOLUTION

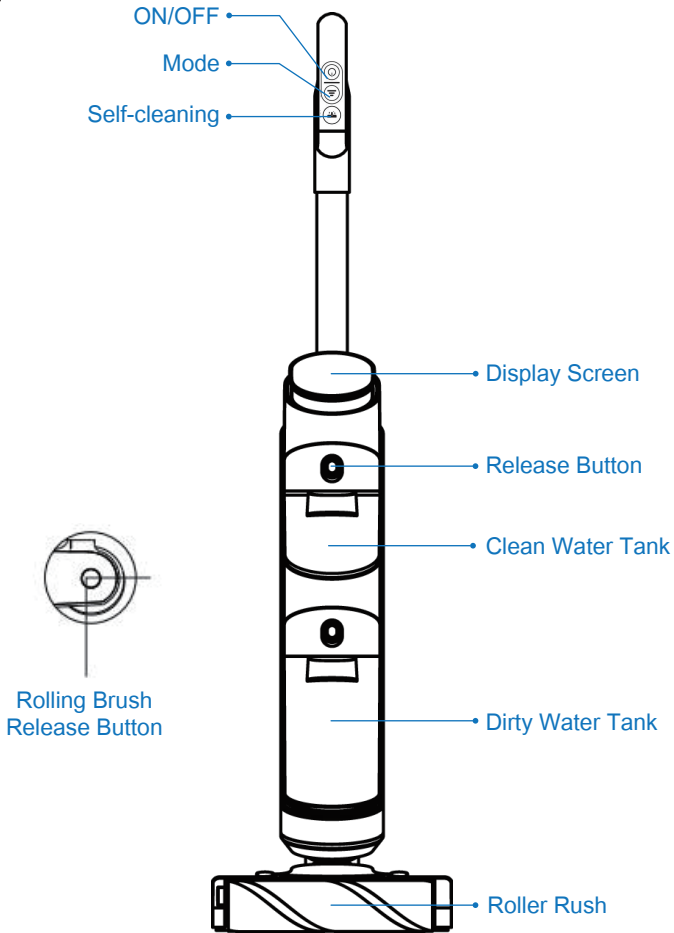
- A large amount of cleaning solution entering the motor may cause damage to the appliance.
- Add solution as instructed in the Product Operation section. We recommend using the provided cleaning solution or low-foaming detergent. Do not use the product with acidic, alkaline solution, or any substances harmful to the environment.
- Keep out of the reach of children. Avoid contact with eyes and skin, otherwise, rinse thoroughly with water. If irritation persists, seek medical advice. If a product is swallowed, seek medical advice.
- Dirty water and solution disposal should comply with local environmental regulations.

SPECIFICATIONS

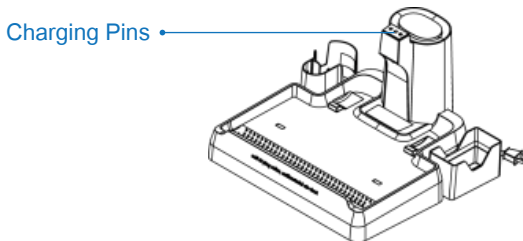
Product Name	Wet Dry Vacuum Cleaner
Model	V2
AC Input	110V 50/60HZ
Voltage	DC 21.6V
Battery Capacity	4000mAh
Rated Power	200W
Tank Capacity	Dirty water: 600ml Clean water: 700ml
Charging Time	<240 mins
Product Size	11.0 x 10.3 x 43.7 inch (280 x 262 x 1110 mm)
Net Weight	10.1 Lbs (4.6 kg)

COMPONENTS

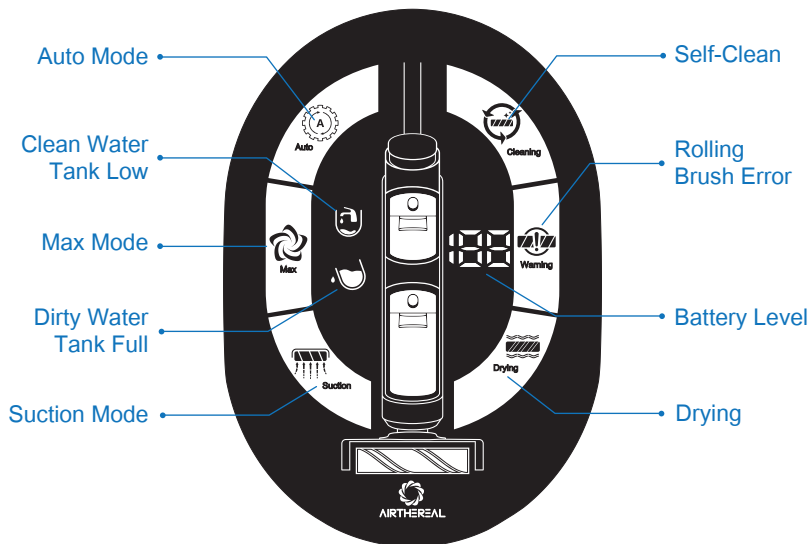
Product



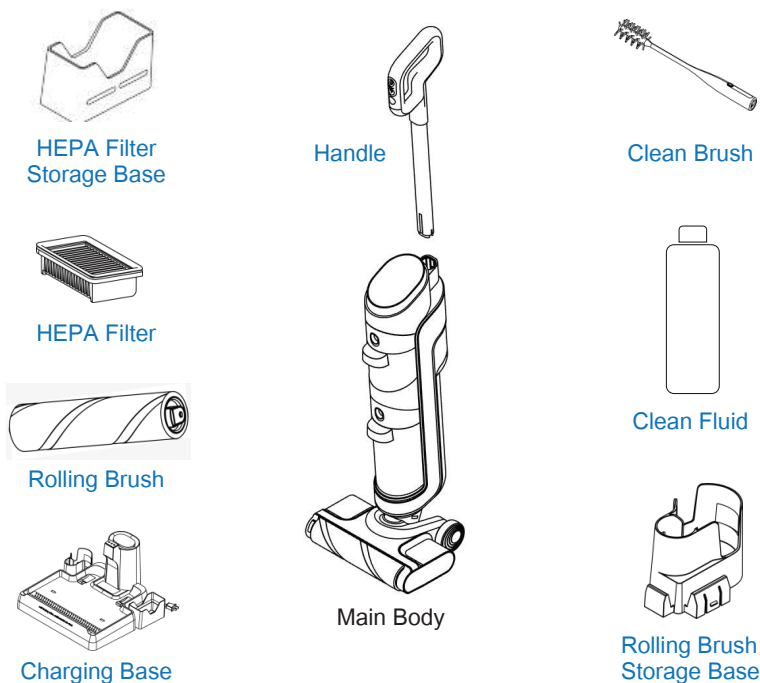
Charging Base



Status Display



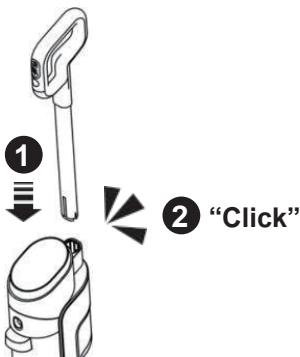
Contents Introduction



PRODUCT ASSEMBLY

Insert the handle into the corresponding top position of the main body.

There are buckles for positioning. If you hear a clicking sound when the handle snaps into place, the installation is complete.



Handle Disassembly

Use a non-sharp auxiliary tool (such as a bamboo stick) to poke into the small hole shown in the figure to hold the handle removal key, and at the same time pull out the handle vertically upward.

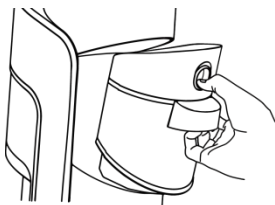
PRODUCT OPERATION

Preparation

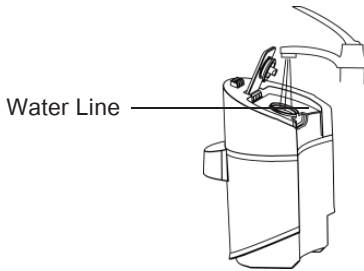
Please check whether the appliance has power. If not, please charge it (refer to "Product Charging" for details), and use after fully charged.

Fill the Clean Water Tank

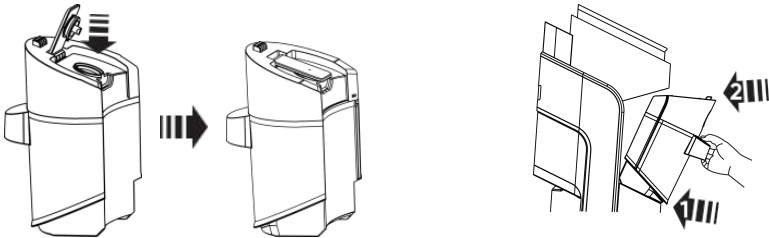
1. Press the tank button to remove the solution tank.



2. Open the cover and add clean water, not exceeding the MAX line. (For deep cleaning, please add 16ml (about two bottle caps) of floor cleaning solution.)



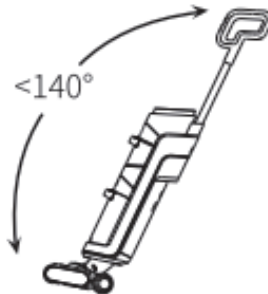
3. Put the clean water tank back into the vacuum body until it clicks into place



Note: If you need to use a cleaning solution, please use the cleaning liquid that comes with this product or another low-foam detergent to prevent product damage.

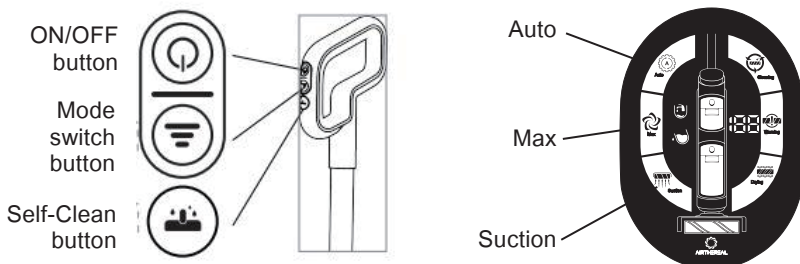
Wash the Floor

1. Please tilt the machine before turning it on.



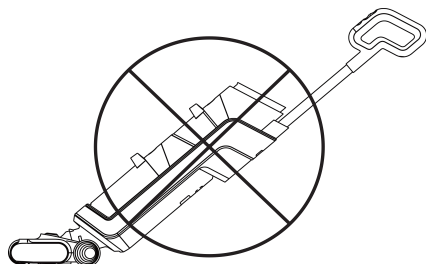
2. The ON/OFF button is on the handle as shown in the picture below. Press the button to turn on the appliance. The default mode is the Auto mode. Press the button again to turn off the appliance.

- When the machine is running, press the Mode button to switch between Auto/Max/Suction modes.

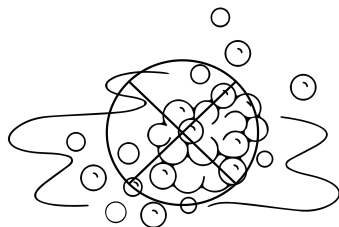


Warning

- This product has an Upright Switch function. Please tilt the appliance after turning it on. To avoid water leakage, do not tilt the appliance over 140 degrees.

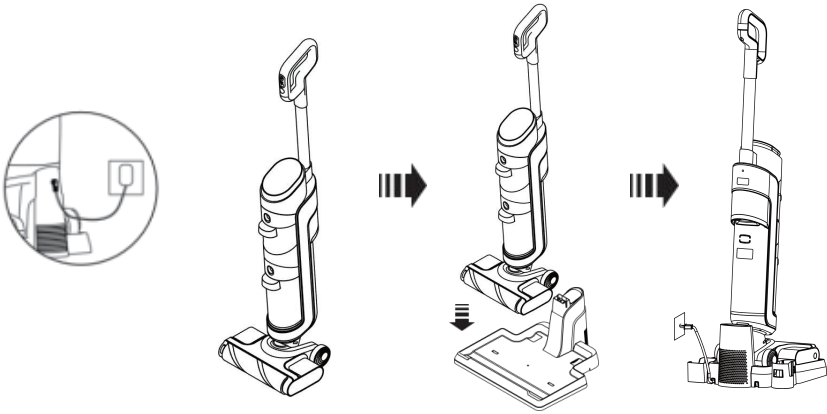


- Please do not vacuum foam liquid. It is recommended to use Max mode for heavy stains.



Charging:

1. Connect the power adapter to the charging base.
2. Place the washer into the charging base as shown in the picture below.

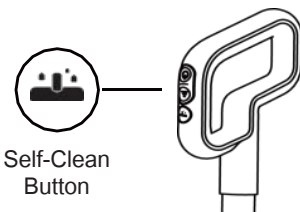


Warning:

- Only charge the appliance with the adaptor supplied by Airthereal.
- During long periods of not being used, the appliance must be charged once every 3 months for optimal performance. It may take about 4 hours for a full charge.
- Store indoors in a dry place. Do not expose the appliance to sunlight or freezing temperatures. The recommended temperature range is 39.2°F (4°C) - 104°F (40°C).

Self-cleaning

1. After the machine is cleaned, place it back on the charging base.
 2. Empty the dirty water tank and make sure that the clean water tank has enough water.
 3. Start the self-cleaning mode.
- Press the self-clean button to start the procedure as shown in the right picture.
 - After the self-cleaning function begins, the appliance enters charging status and starts the rolling brush auto air dry mode.



Self-Clean
Button

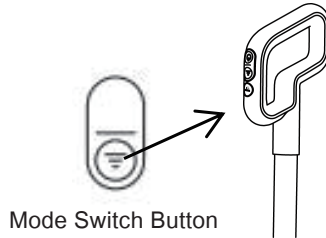


Self Cleaning
Icon

4. Enter air dry mode

- The brush air dry system will auto start after cleaning.
- The rolling brush will rotate every three minutes to dry evenly and thoroughly. The entire process will last for around two hours.

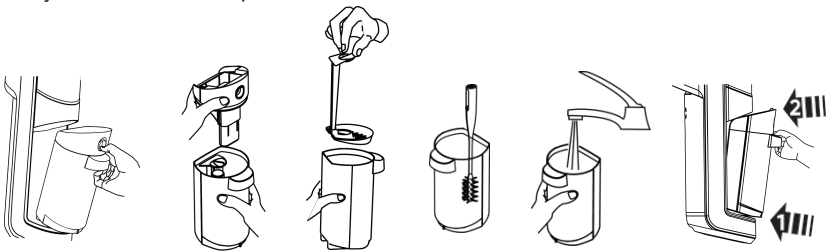
Note: Pressing the Mode Switch button can turn the Air dry function on/off during charging.



Cleaning the **Dirty Water Tank**

When the dirty water tank is full, the appliance will turn off automatically. The screen will display the dirty water tank indicator and the voice prompt will let you know the tank needs to be emptied.

1. Press the water tank button to remove the dirty water tank.
2. Remove the float from the dirty water tank, and empty the dirty water. It is recommended to clean the residual dirt found on the inner wall of the water tank with small cleaning tools.
3. Pour out the dirty water. Reinstall the water tank cover and insert the dirty water tank back into the main body until it clicks into place.



Silent Mode

Press the self-cleaning button for 3 seconds to activate or deactivate the voice prompt function.

Product Routine Cleaning

- For optimal performance and to prevent odors, always clean and dry the dirty water tank, floater, filters, brush roller, and brush roller cover completely after each use.

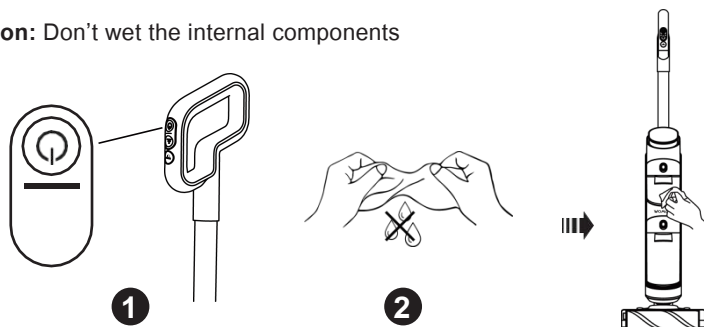
- Please make sure each part is installed correctly or the appliance may not work properly.
- After maintenance, place the appliance on the storage tray vertically. Do not expose the appliance to direct sunlight. Store it indoors in a dry place.

ROUTINE CLEANING

Cleaning the vacuum cleaner body

1. Turn off the power before cleaning the appliance.
2. Clean the body with a soft cloth which could be dampened with clean water or a Neutral detergent.

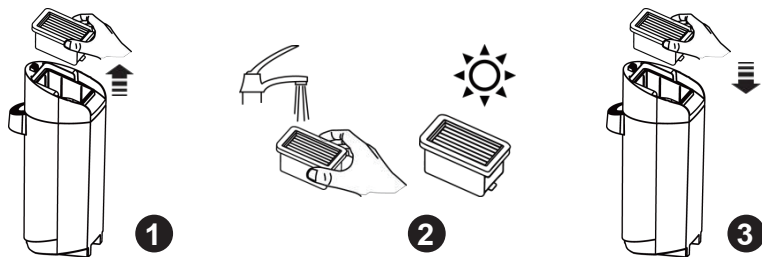
Attention: Don't wet the internal components



Clean the HEPA Filter

Clean the HEPA filter under running water after each use. Make sure the HEPA dries completely before reassembling.

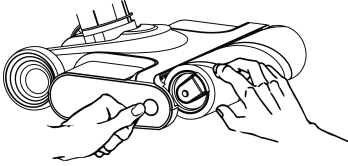
1. Take out the filter support from the water tank cover.
2. Rinse it with running water
3. Install it back into the water tank after it is completely dry.



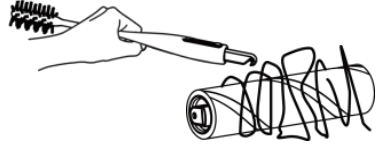
Clean the Rolling Brush

Clean and dry the brush roller after every use.

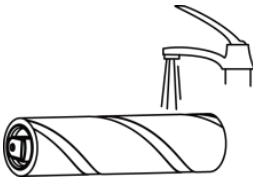
1. Pull up the left handle and remove the rolling brush.



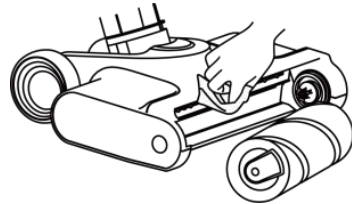
2. Remove any tangled hair or debris on the brush roller using the brush cleaning tool.



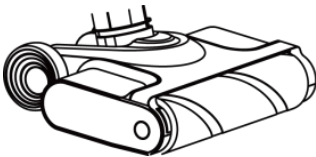
3. Rinse the rolling brush under running water.



4. Please wipe any stains on the nozzle with a wet cloth.



5. Assemble the rolling brush back into the appliance.



TROUBLESHOOTING

Problem	Possible Causes	Solution
Power light Flashing	Motor abnormal	Clean the clog in the tube and restart the appliance
Appliance Not Working	Out of Power or Low Power	Fully recharge the appliance before using
	The rolling brush is entangled with objects like hair	Clean the rolling brush
Weak Suction Power	Dirty water has reached its designated capacity	Take out the dirty water tank, pour out the dirty water
	Wrong assembling of rolling brush, dirty water cup	Reassemble the product
	The rolling brush is entangled with objects like hair	Clean the rolling brush
	The suction nozzle is blocked	Clean the suction nozzle
	The filter mesh above the float is dirty	Clean the filter mesh
	Low battery	Please fully charge the product before using
	HEPA dirty	Clean the HEPA filter before using
Cannot Charge	The appliance and the charging slot are not properly contacted.	Check and properly contact the appliance
No water out of the nozzle	Clean water cup is empty	Fill up the clean water cup
	Clean water cup is not properly assembled	Reassemble the Clean water cup
Water leakage from the air outlet tunnel	Missing assembly of HEPA filter	Assemble the HEPA filter
	Missing assembly of float indicator	Assemble the float indicator
	HEPA filter is not dry enough after washing	HEPA filter needs to dry completely after washing
	Dirty water has reached its full capacity	Take out the dirty water tank, pour out the dirty water

LIMITED WARRANTY

We provide a 1-year warranty from the day of purchase. For more information please visit www.airthereal.com/warranty.

What's covered?

Defects due to faulty materials and/or workmanship of the product.

What's not covered?

1. Damage caused by the owner when attempting to fix or alter the product by himself or herself.
2. Damage caused by misuse, abuse, neglect, alterations, or unauthorized repair.
3. Natural depreciation.

Warranty Period

Warranty becomes effective from the date of original purchase and will last for 1 year.

Who's covered?

This limited warranty is only effective for the original purchaser. It is non-transferable.

How to request warranty services?

To obtain the benefit of this warranty, please email support@airthereal.com.

Our customer service team will address your issue as soon as possible!

Always here to help you
www.airthereal.com



WARNING Cancer and Reproductive Harm
www.p65warnings.ca.gov

Produced for: West Ryder Technology LLC
2330 Paseo Del Prado STE C304
Las Vegas, NV 89102

Made in China

V 202305