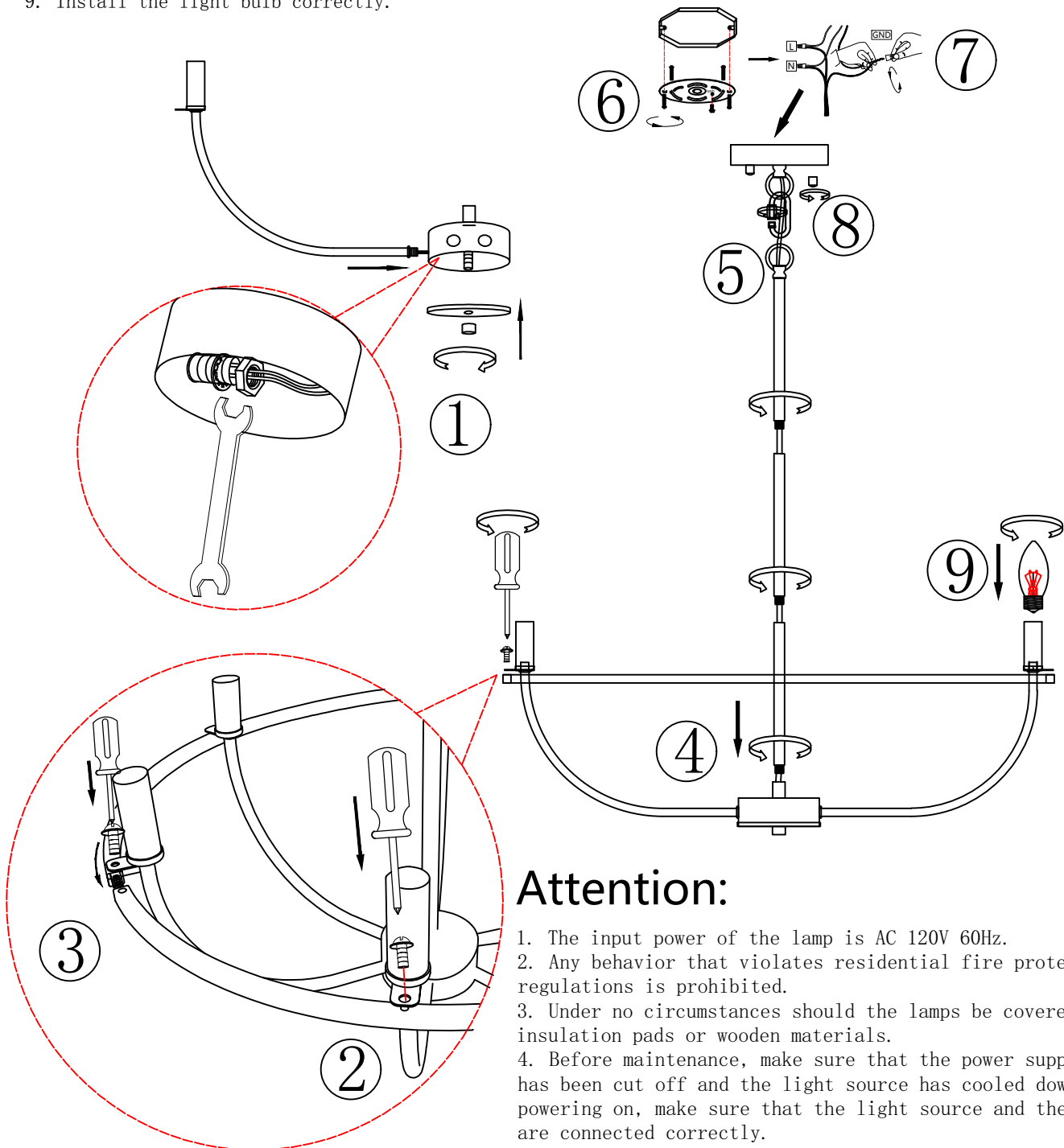


# Installation Steps:

Thank you for using our product. Please read the operating instructions before installation. Please refer to this operation manual. Before installing this product, please disconnect the power supply. We suggest hiring a professional electrician for installation.

1. Loosen the ball nut and bottom cover at the bottom of the lamp, and use a wrench to lock and fix the lamp arm onto the lamp. Then cover the bottom cover and install the ball nut.
2. Install the bent flat iron at the lamp head position, and first install the screw that fixes the middle of the bent flat iron.
3. Connect the bent flat iron joint and install it at the lamp head position, then tighten it with screws.
4. Install the suspension rods on the lamp body in sequence.
5. Hang the circular light fixture ceiling box on the circular ring above the suspension rod.
6. Install the mounting bracket onto the junction box.
7. Connect the black wire to the live wire with a wire cap, connect the white wire to the neutral wire, and tightly wrap it with insulating tape. Connect the grounding wire to the grounding wire of the junction box. If the house does not have a grounding wire, please connect it to the green screw on the wall panel. (Screw label: GND). Carefully insert all wires into the junction box.
8. Use a round nut to secure the lamp onto the mounting bracket.
9. Install the light bulb correctly.



## Attention:

1. The input power of the lamp is AC 120V 60Hz.
2. Any behavior that violates residential fire protection regulations is prohibited.
3. Under no circumstances should the lamps be covered with heat insulation pads or wooden materials.
4. Before maintenance, make sure that the power supply of the lamp has been cut off and the light source has cooled down. Before powering on, make sure that the light source and the lamp holder are connected correctly.
5. Please wipe with a towel or flannel, and clean the lamp body with a non-corrosive detergent. Do not scrub directly, wipe with water or a damp cloth.
6. If you have any questions about this manual, please consult a qualified lighting installation engineer.