

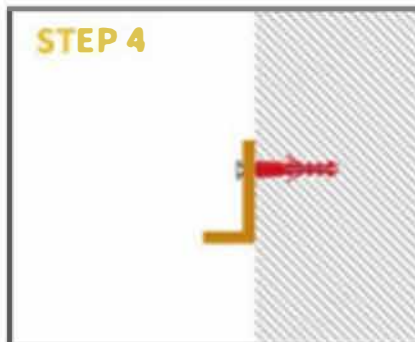
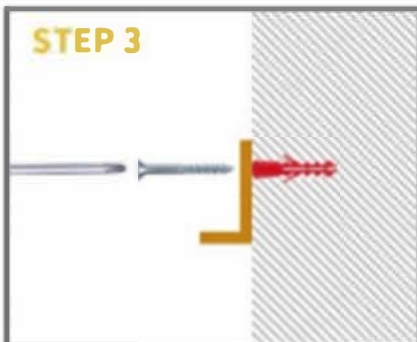
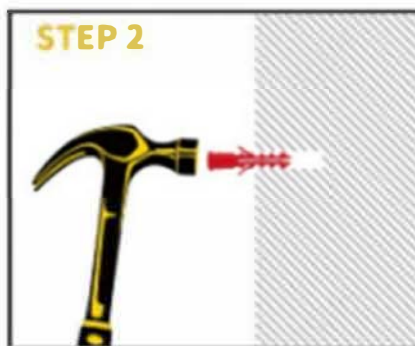
Assembly Instructions



Precautions Before Assembly:

Expansion Screw Installation Tutorial

INSTRUCTIONS



Assembly method

1. Place the wall-mounted light fixture close to the wall.

Connect the hot wire to one of the two wires on the light fixture.

Connect the neutral wire to the other wire on the body of the light fixture.

2. Use the light components circled below to mark the drilling locations on the ceiling.

Drill holes on the marks and stick the expansion anchors into the holes.

Secure the lamp backplate to the expansion anchors using self-tapping screws.



3. Screw the glass and lampshade onto the circled area.



The installation is complete.

Your fixture is now assembled and ready to use.