

# Tv Stand

assembly guide

# introduction



Valued Customer,

We design and carefully manufacture our products for our customers, We wish that our customers to have fun while they are doing their new furniture

The product you just purchased was subjected to all sorts of tests and controls before sending out to you.

Hope you enjoy your new furniture!!!



Before starting, please check all components and accessories according to the provided list. If you purchased more than one product, to prevent confusion, be sure that you completed the first product, then start the next one. Please make sure that you select correct numbered part and use specific connector to assemble. We do not recommend any modification or rotation in assembly. Please follow the manual carefully.



Furniture parts are going to several manufacturing procedures. During this process, parts can have little dust or marks. Please clean the parts with dump cloth before assembly to get the best result. Usual cleaning would be suffice.



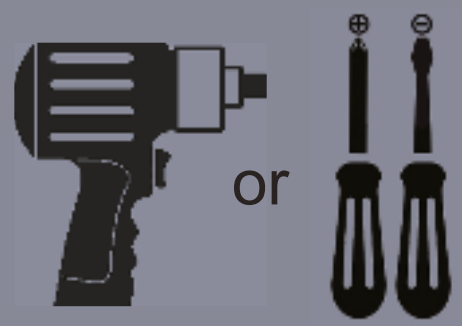
Although all products are carefully manufactured and packed, sometimes we experience damage during transportation. In such cases, please check the damaged part, note the part number written on the part and do not hesitate to contact us



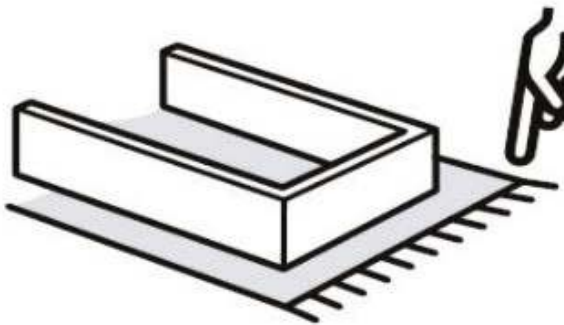
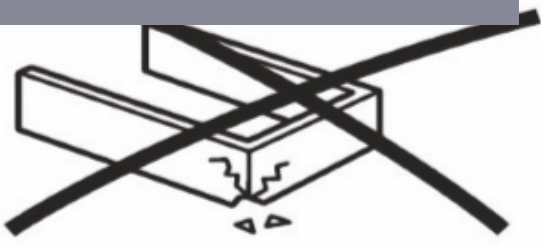
Do not use your furniture for out of purposes. If you would like to use it out of purpose or would like to do some modification or rotation, please contact us for more details.

Please do not expose your furniture with excessive heat, cold and humidity because product can be affected negatively.

before you start



Get required installation tools prepared.

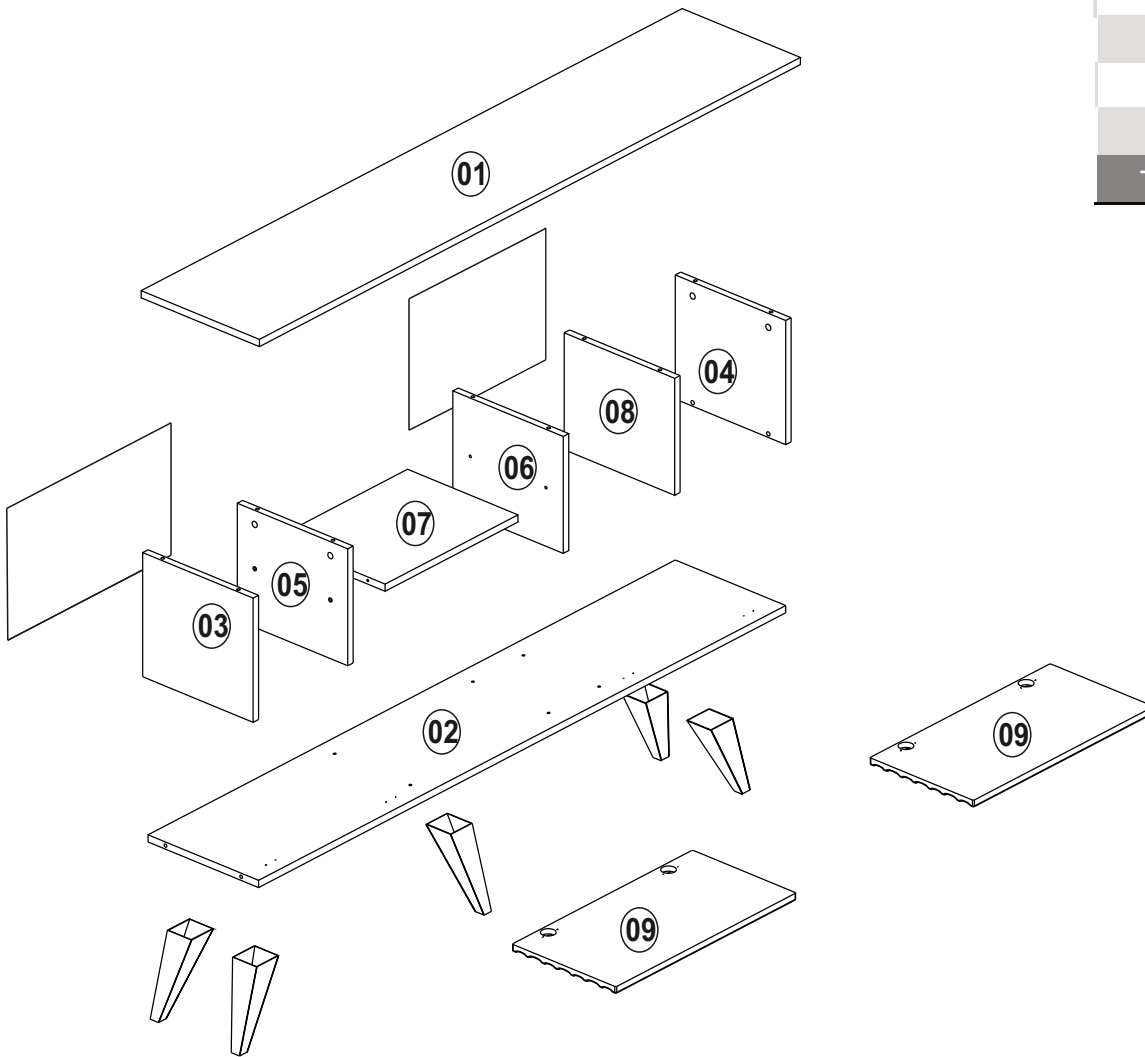



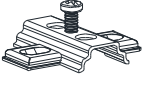


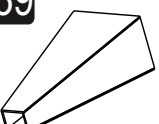
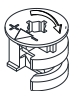

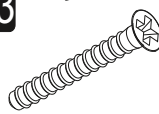

Do not install the product on rough surfaces.



Get help from someone else!

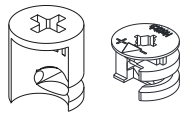
Part1	1x
Part2	1x
Part3	1x
Part4	1x
Part5	1x
Part6	1x
Part7	1x
Part8	1x
Part9	2x
<b>TOTAL</b>	<b>10x</b>



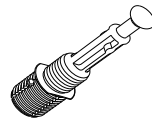
<b>C02</b> bracelet  <b>4x</b>	<b>C04</b> pivot  <b>4x</b>		
<b>A40</b> nail  	<b>A09</b> 3-5x18 screw  <b>36x</b>	<b>A39</b> 20 cm feet  <b>5x</b>	
<b>A02</b> minifix head  <b>14x</b>	<b>A03</b> minifix screw  <b>14x</b>	<b>A13</b> 50 mm screw  <b>10x</b>	<b>A07</b> 18 mm sticker  <b>10x Oud</b> <b>14x White</b>

# getting familiar with the main components

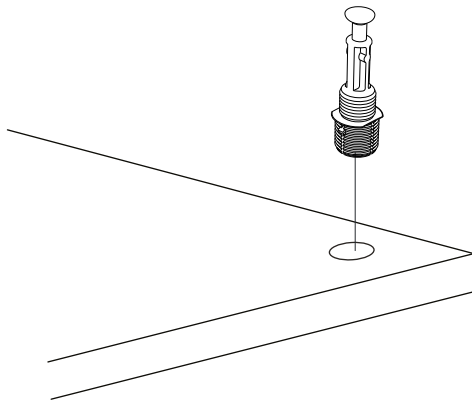
\*Minifix is the main connection component used in products. Before starting, please check the below figures



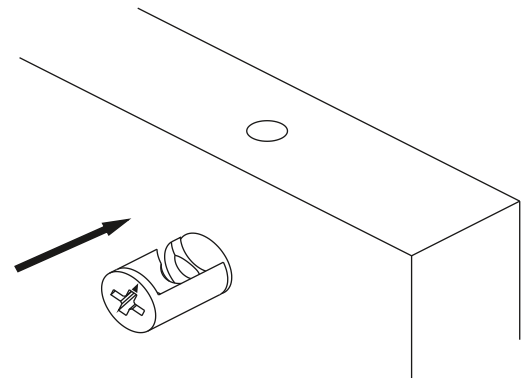
MINIFIX HEAD



MINIFIX SCREW

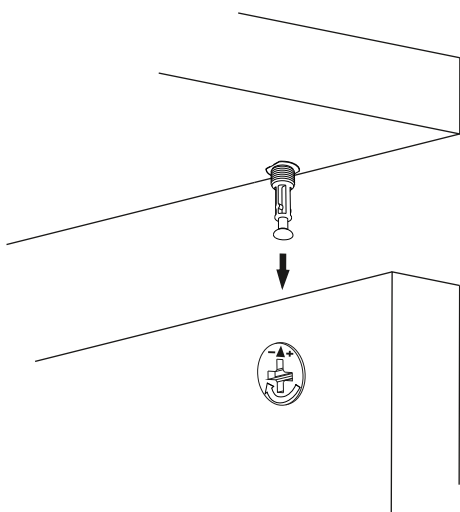


\*Please notice that there is a small arrow on A02 (minifix head). This arrow should show the direction of upper hole.

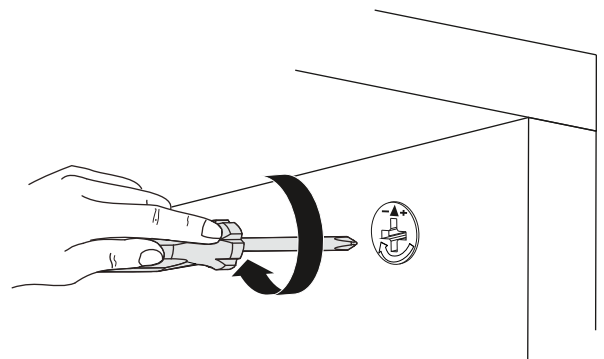


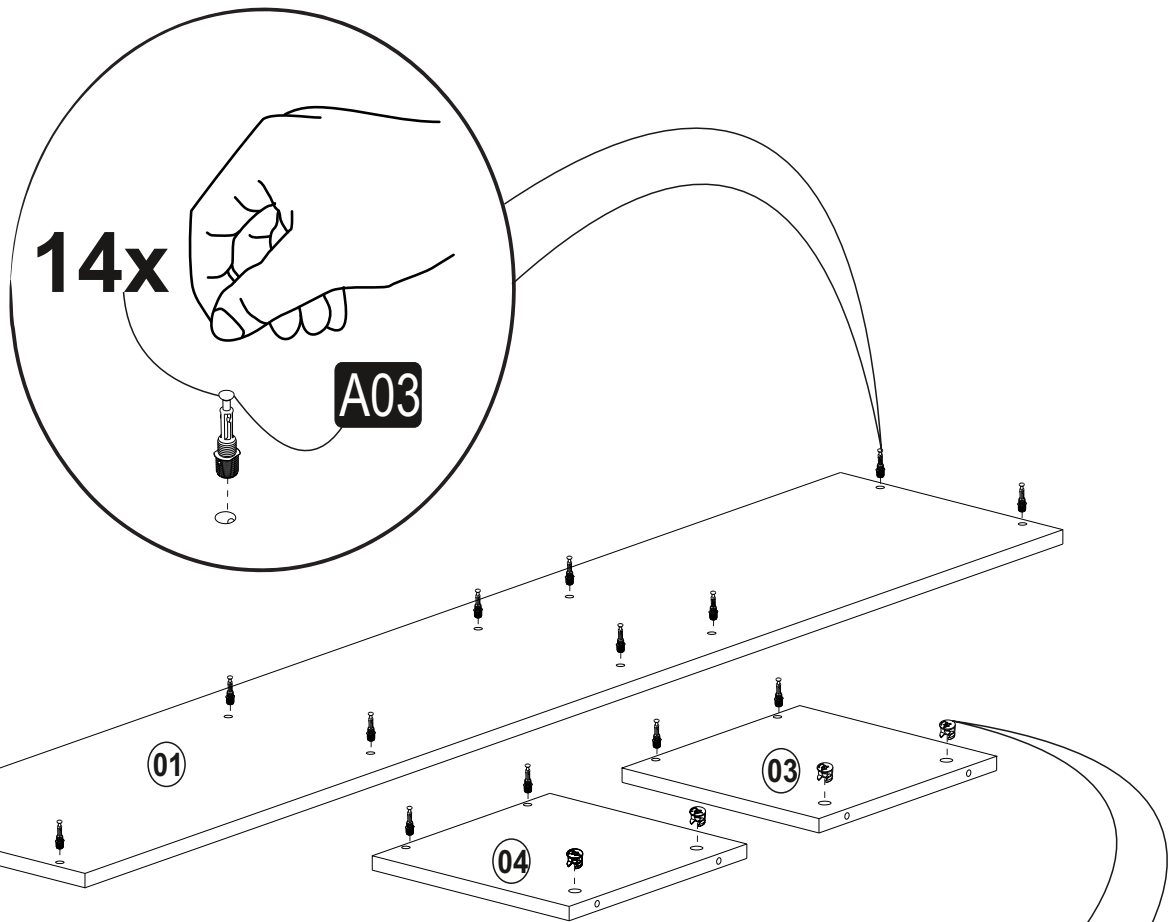
\*A02 (minifix head) and A03 (minifix screw) help us to attach two wood pieces each other.

\*After attaching two pieces please turn the A02 (minifix head) clockwise direction just a half tour with the help of a screwdriver.



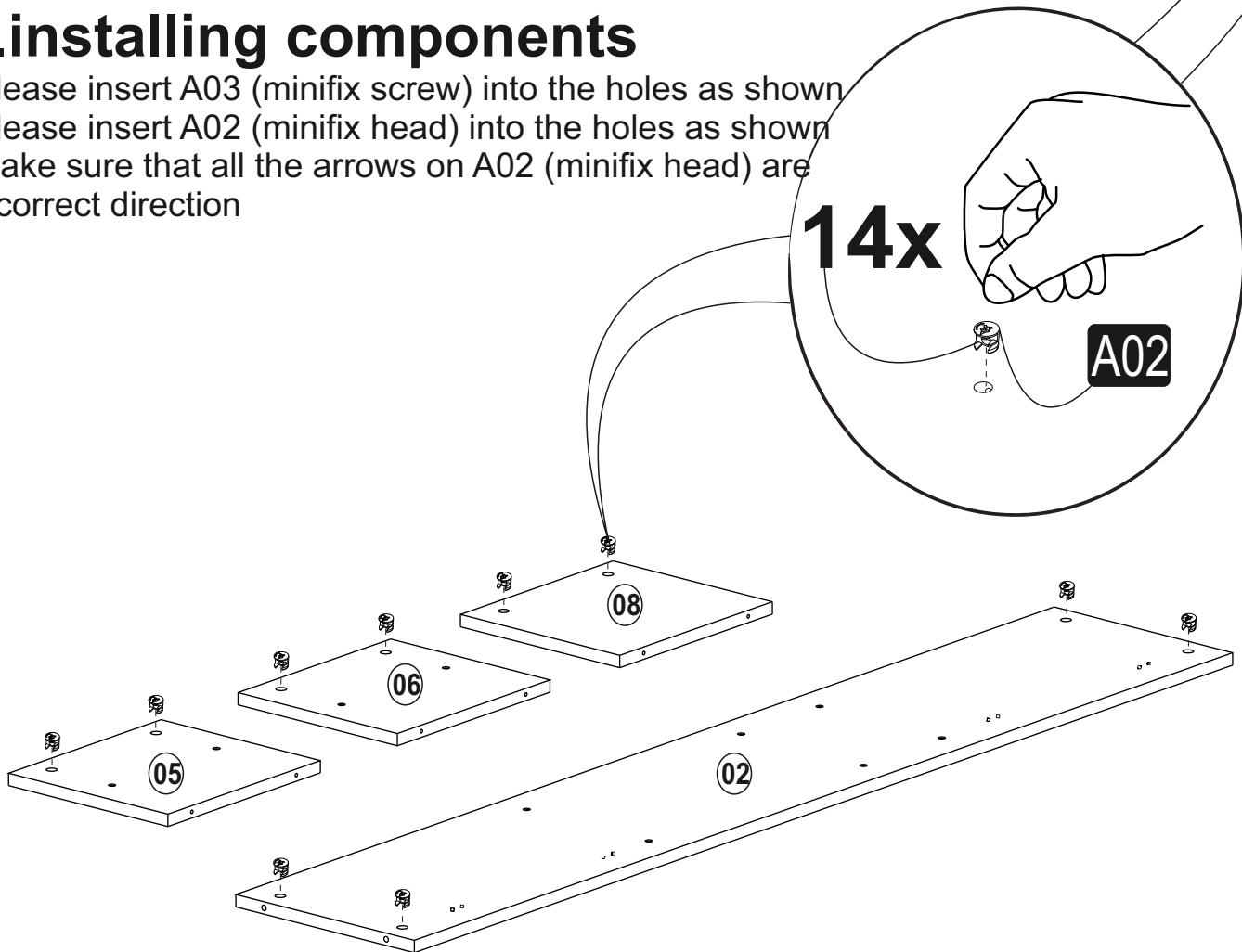
\*Please do not over screw the A02 (minifix head) since it may be broken if too much power is imposed. Just make sure that it is screwed to the direction “+” do not go any further.





## a. installing components

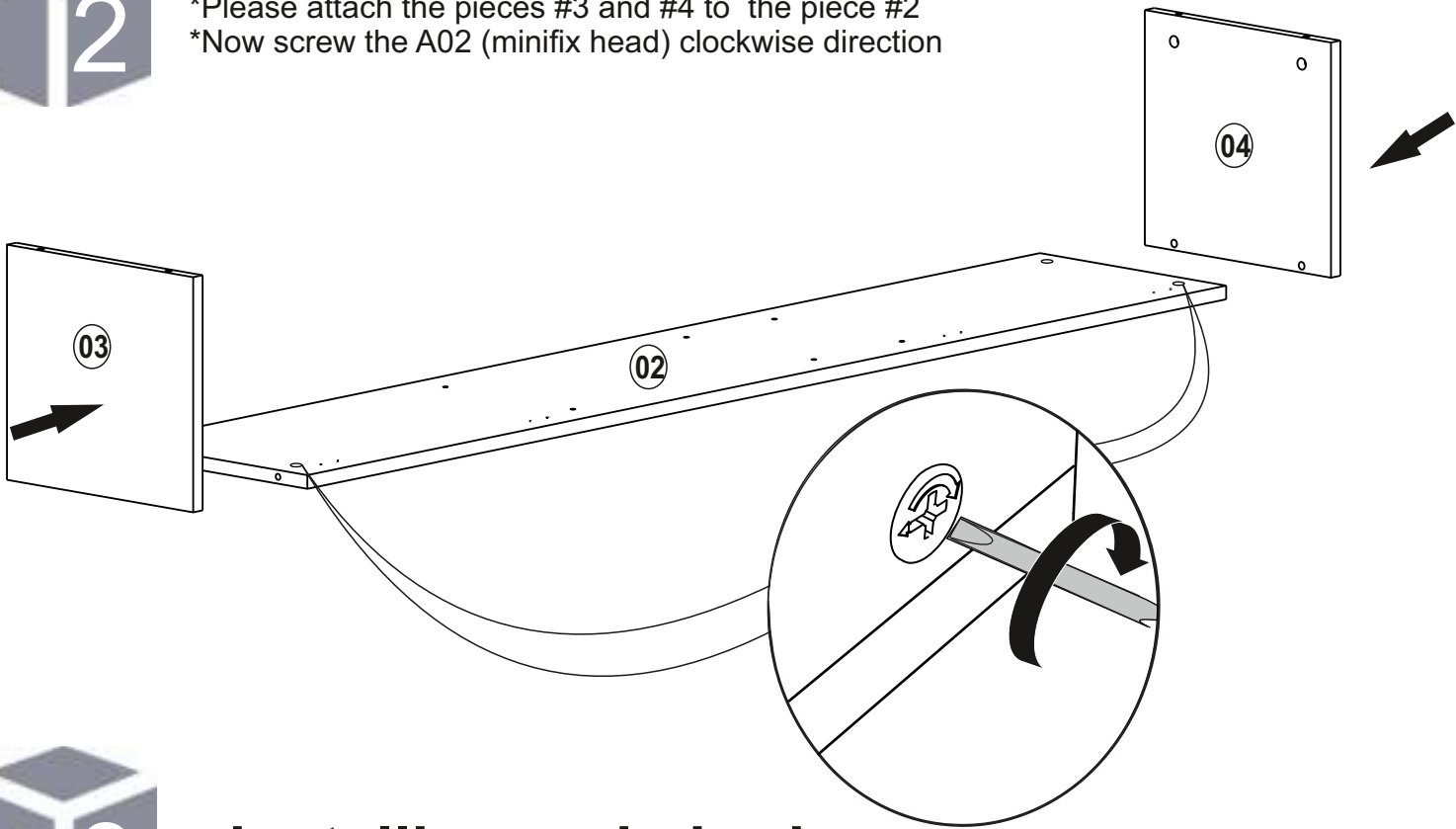
- \*Please insert A03 (minifix screw) into the holes as shown
- \*Please insert A02 (minifix head) into the holes as shown
- \*Make sure that all the arrows on A02 (minifix head) are in correct direction





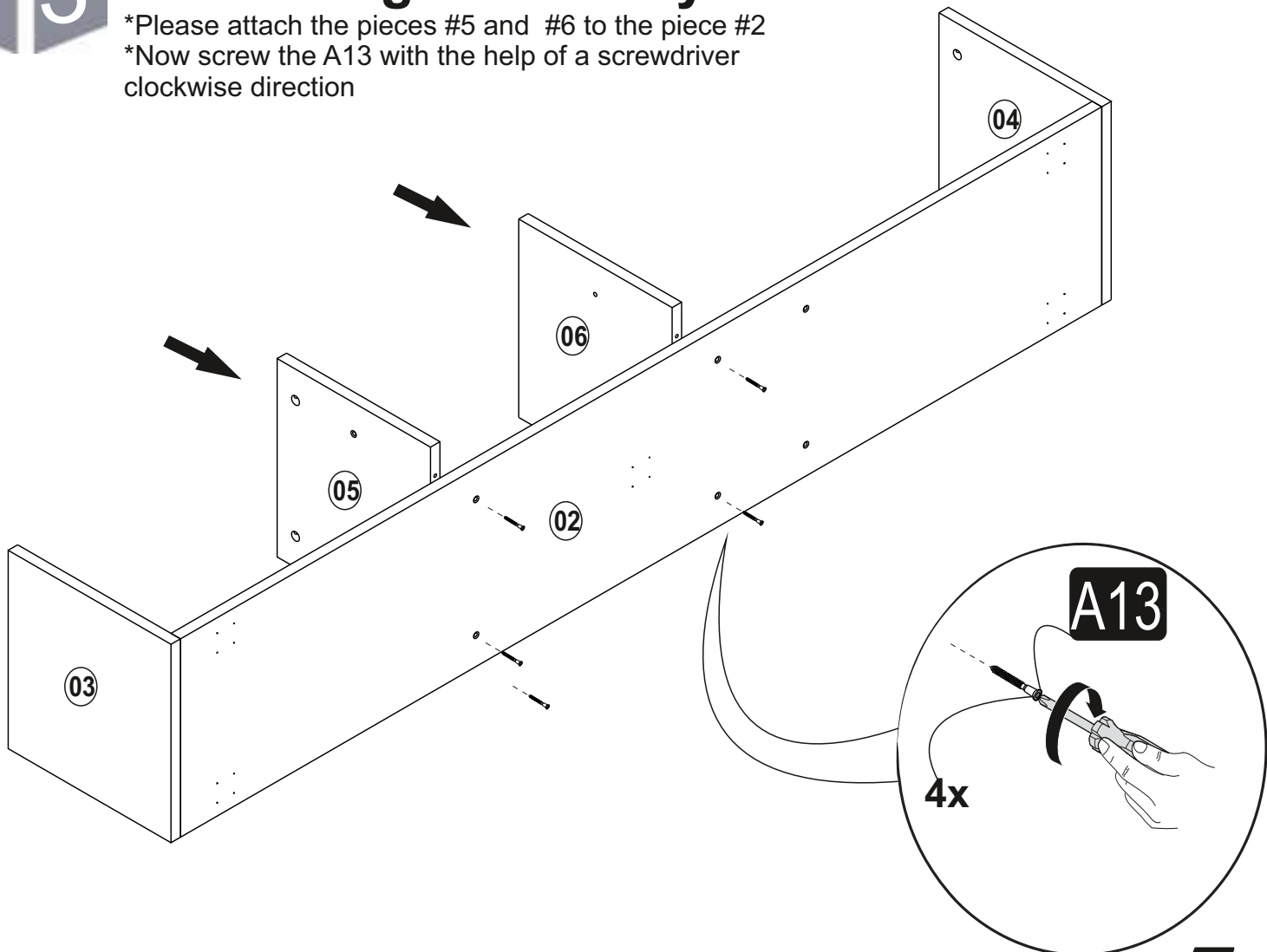
## b. installing main body

- \*Please attach the pieces #3 and #4 to the piece #2
- \*Now screw the A02 (minifix head) clockwise direction



## c. installing main body

- \*Please attach the pieces #5 and #6 to the piece #2
- \*Now screw the A13 with the help of a screwdriver clockwise direction

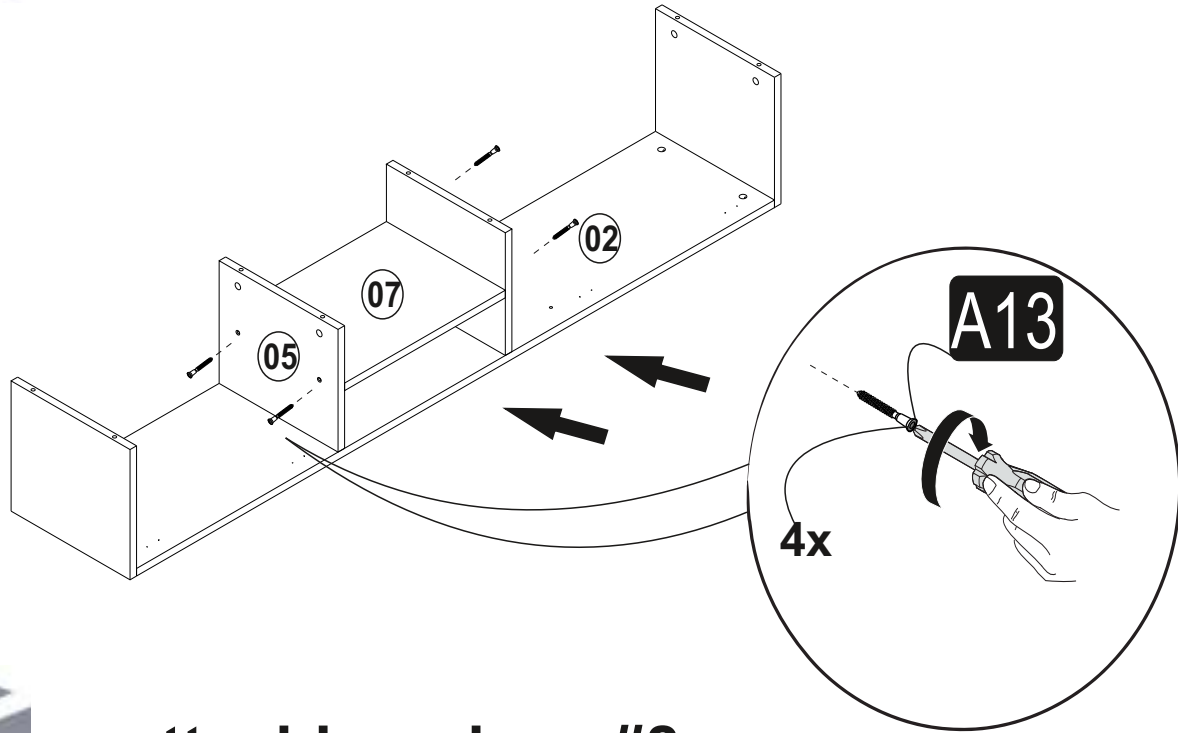




## d.attaching middle shelf

\*Please attach the piece #7 between piece #5 and #6

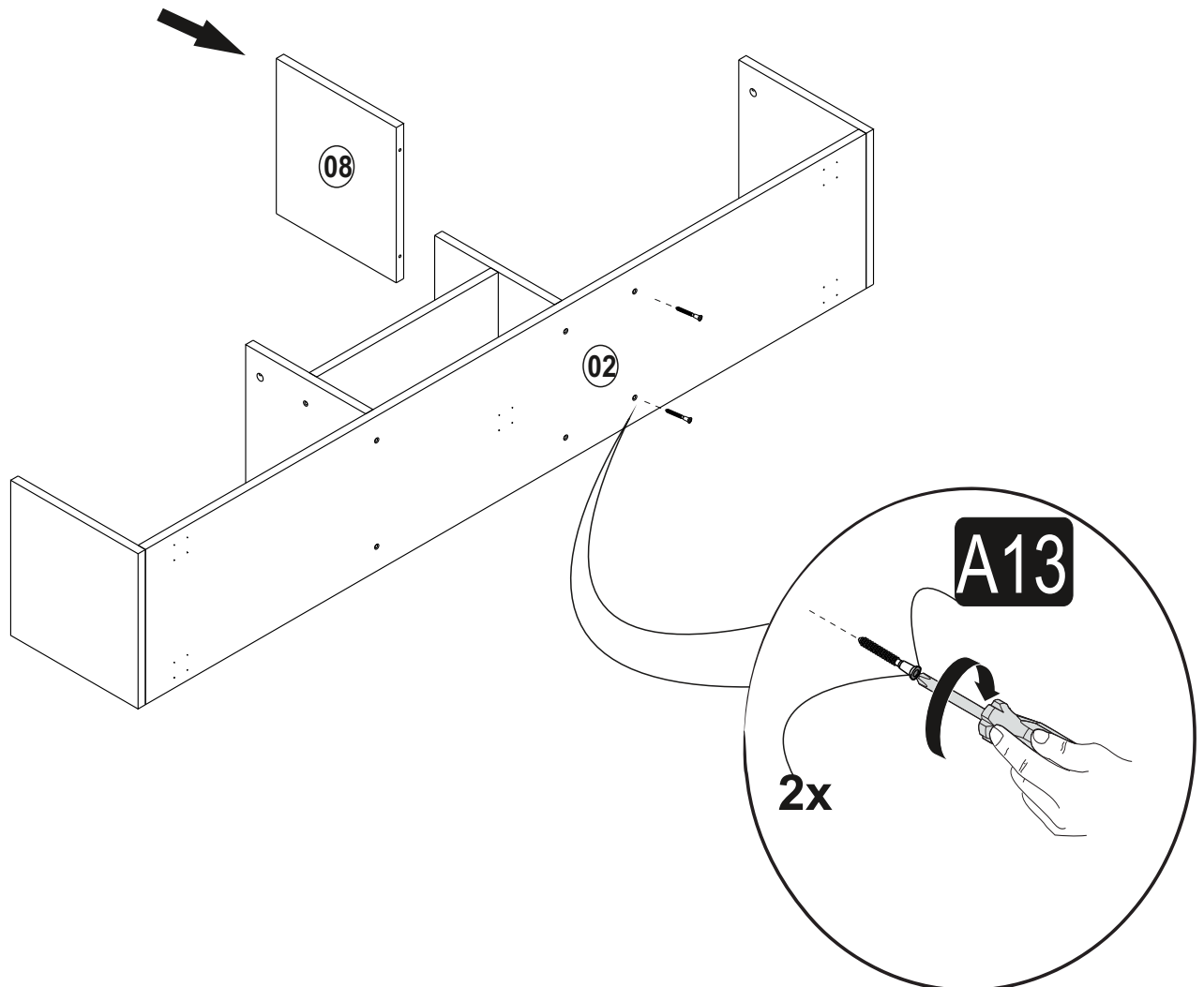
\*Now screw the A13 with the help of a screwdriver clockwise direction



## e.attaching piece #8

\*Please attach the piece #8 to the piece #2

\*Now screw the A13 with the help of a screwdriver clockwise direction

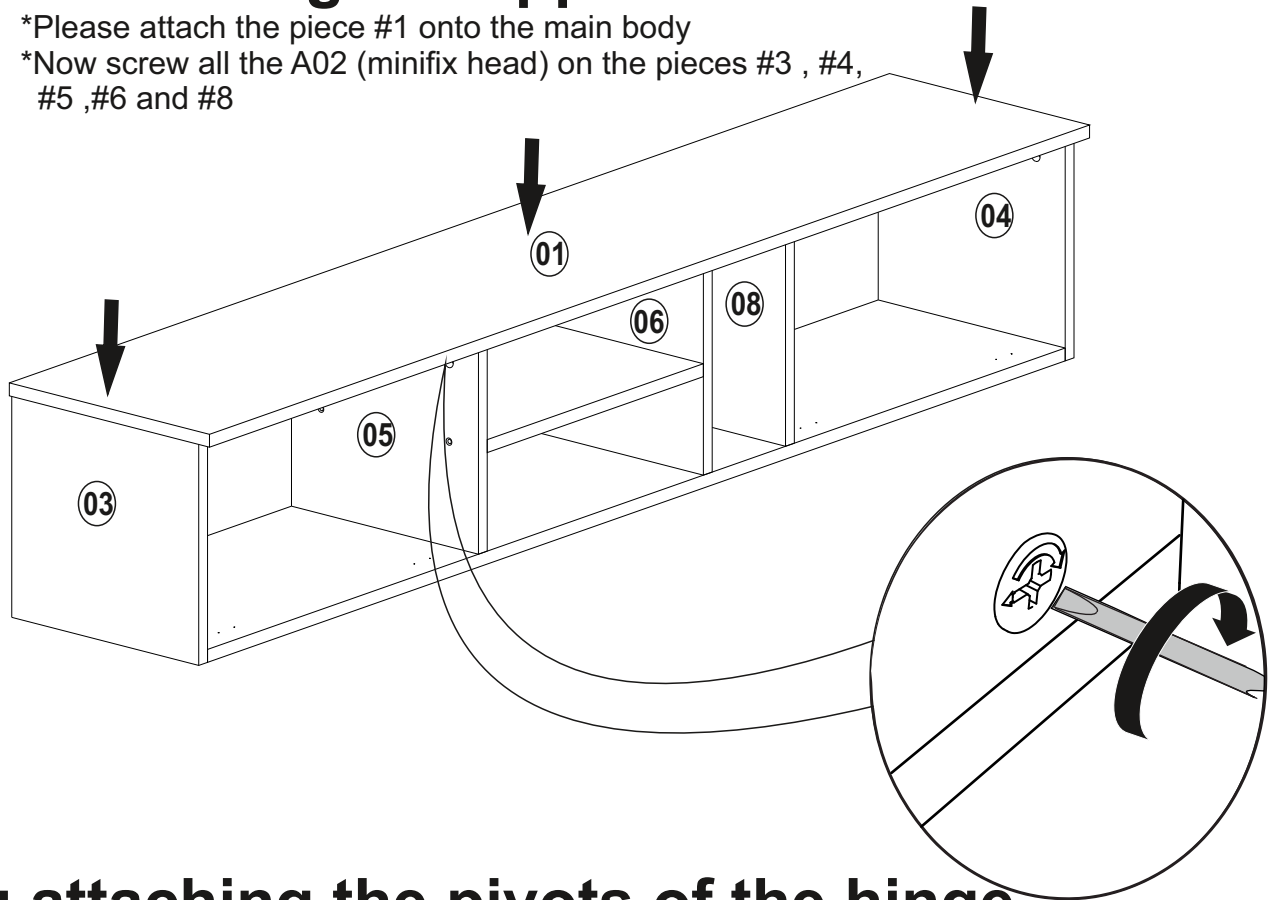




## f.attaching the upper shelf

\*Please attach the piece #1 onto the main body

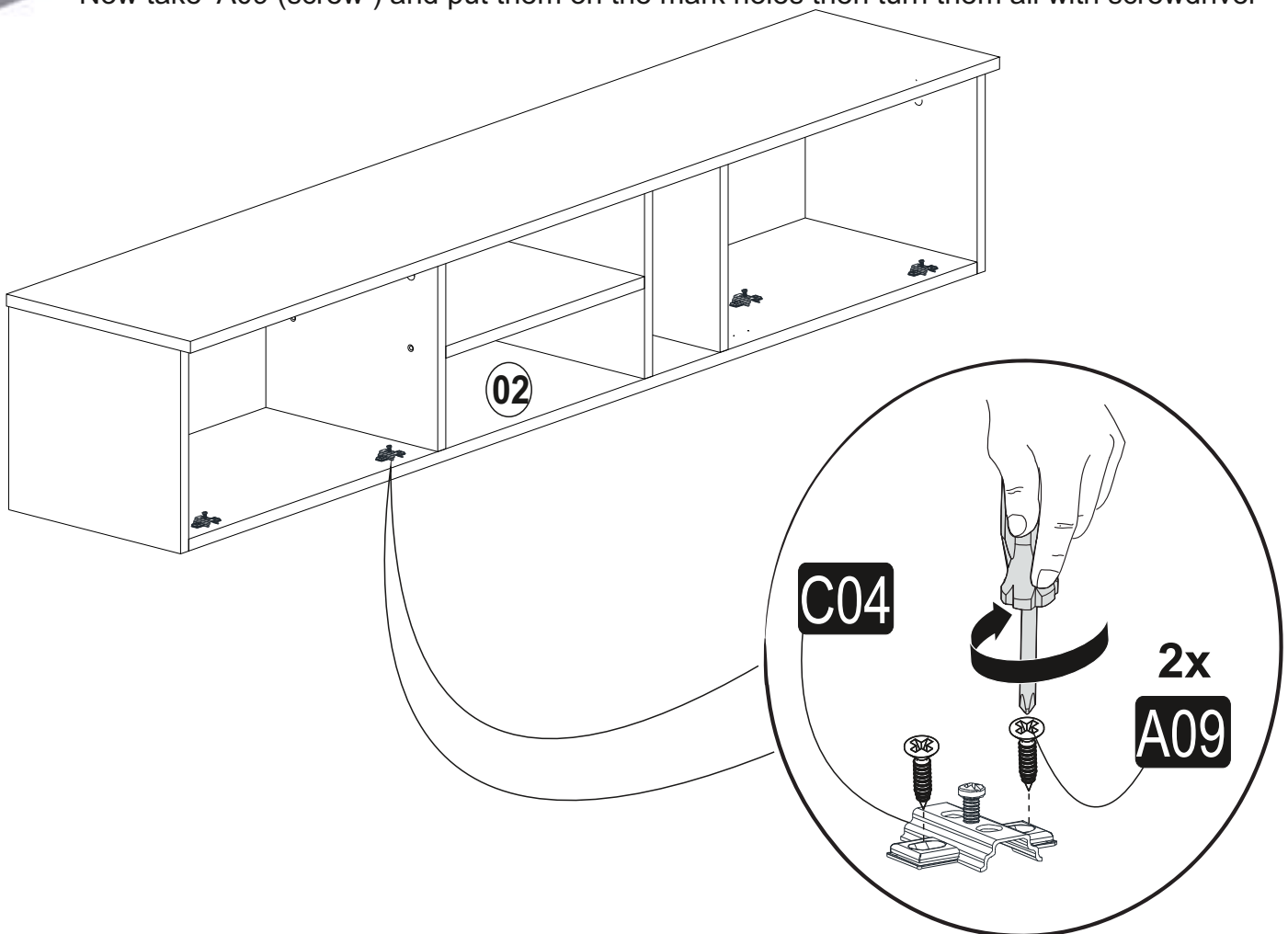
\*Now screw all the A02 (minifix head) on the pieces #3 , #4, #5 ,#6 and #8



## g.attaching the pivots of the hinge

\*Please put all the pivots (C04 ) the way that they will fit the mark holes on the piece #2

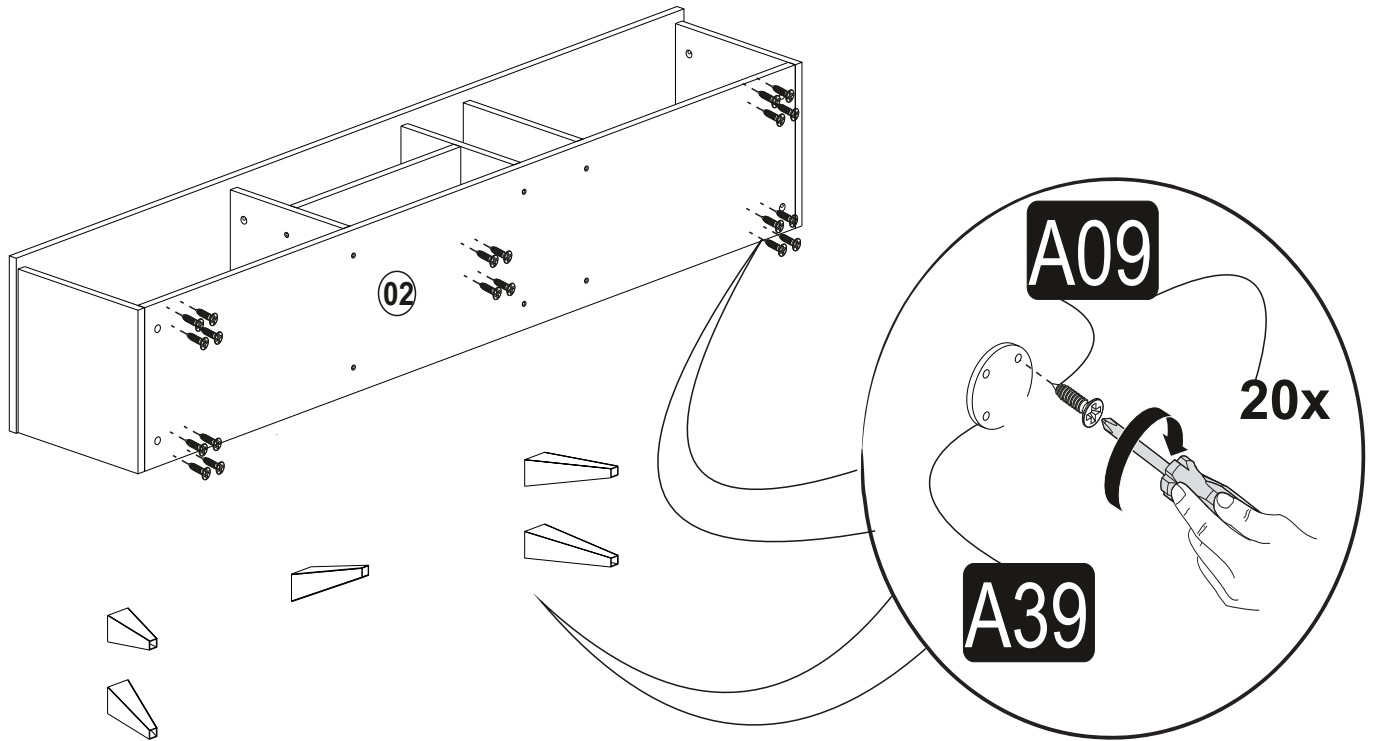
\*Now take A09 (screw ) and put them on the mark holes then turn them all with screwdriver





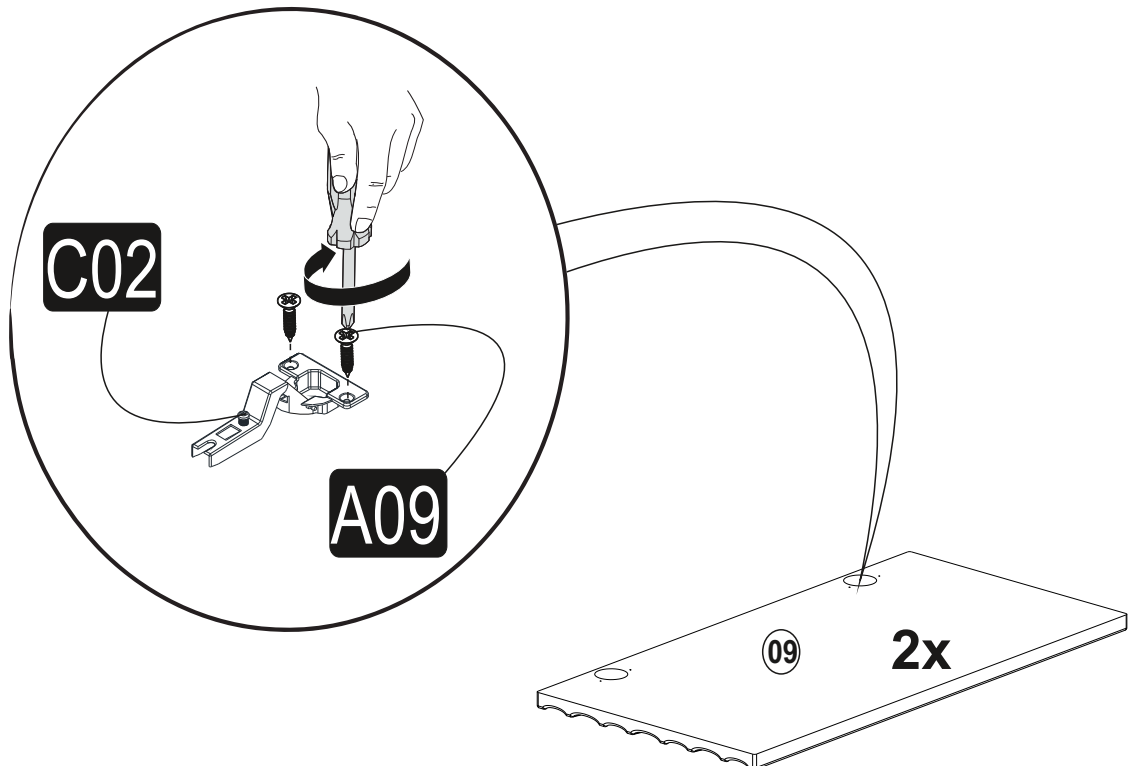
## h. installing the furniture feet

- \*Furniture feet consist of two parts; inner part and cover.
- \*Please take the inner parts of feet then put them on the mark holes
- \*Screw all A09 (screw) with screwdriver
- \*Now place all covers on the inner parts



## i. installing the braclets of the hinge

- \*Please put all C02 (bracelets) into the big holes on piece #9 the way they will fit the mark holes
- \*Now screw all A09 (screw) with screwdriver



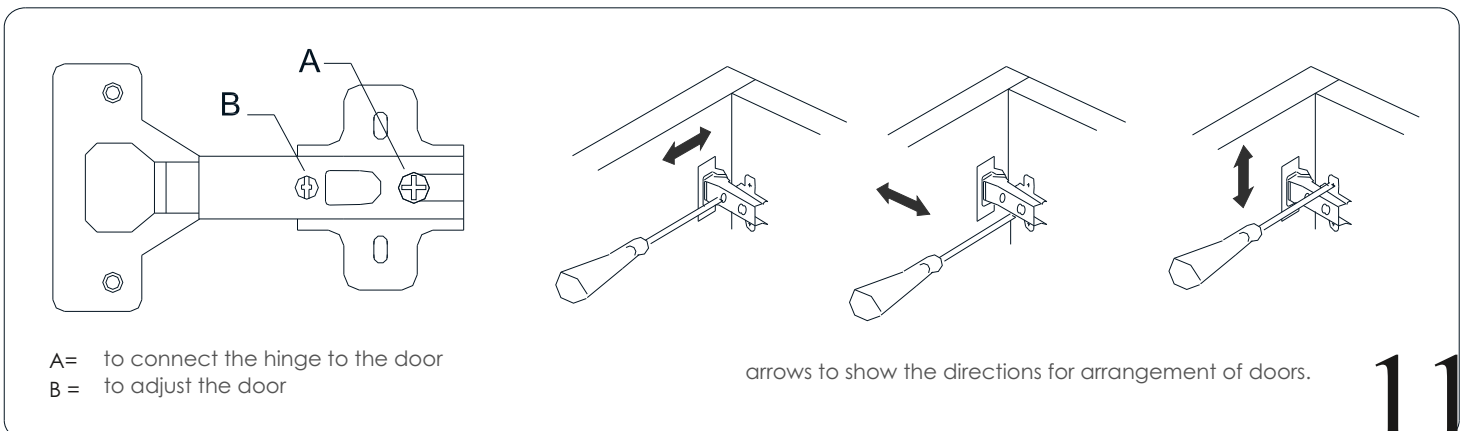
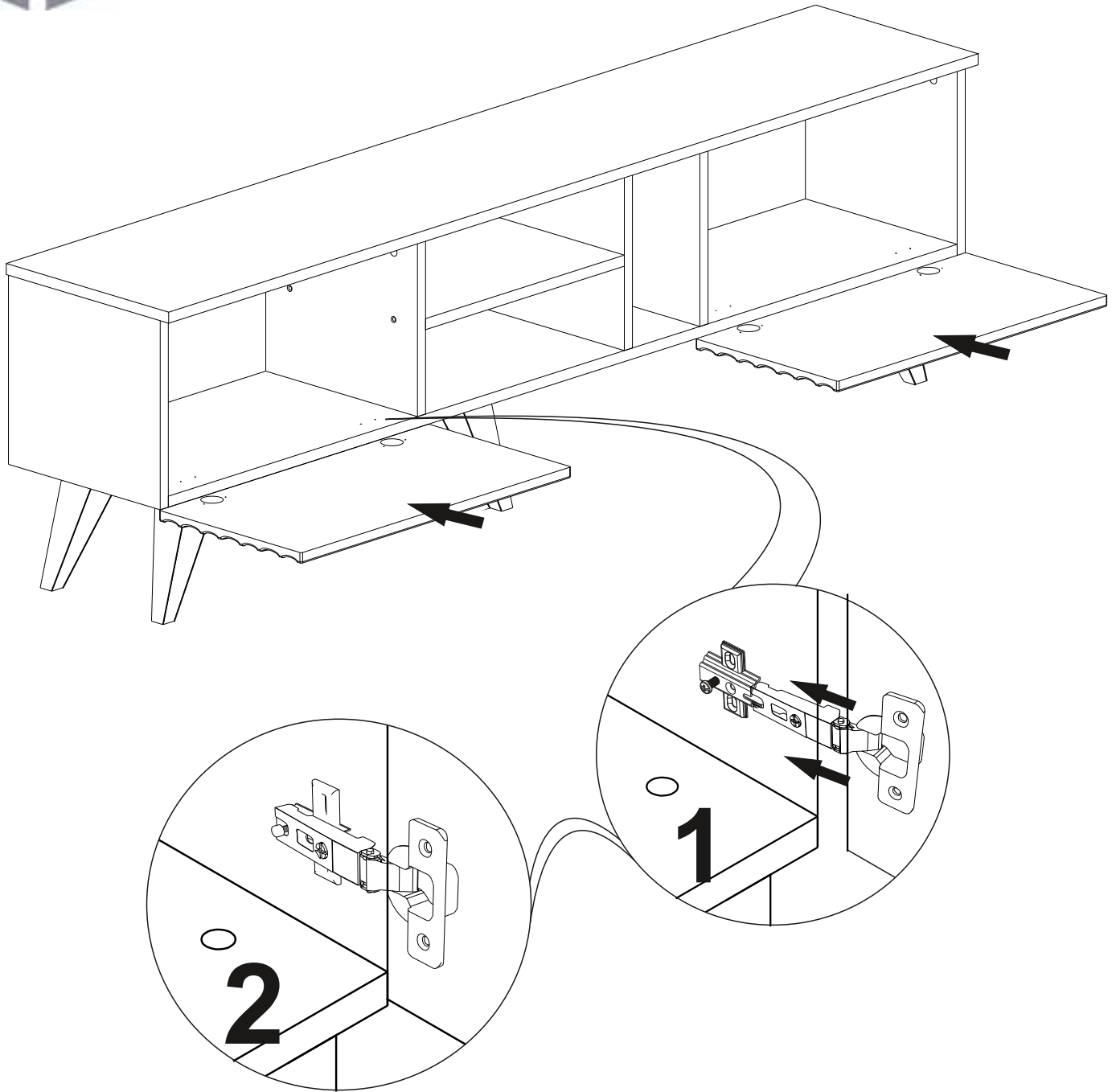


## j. installing cabinet doors

\*Please connect C04(pivot) and C02 (bracelet) as shown in figure

\*Turn the screw A

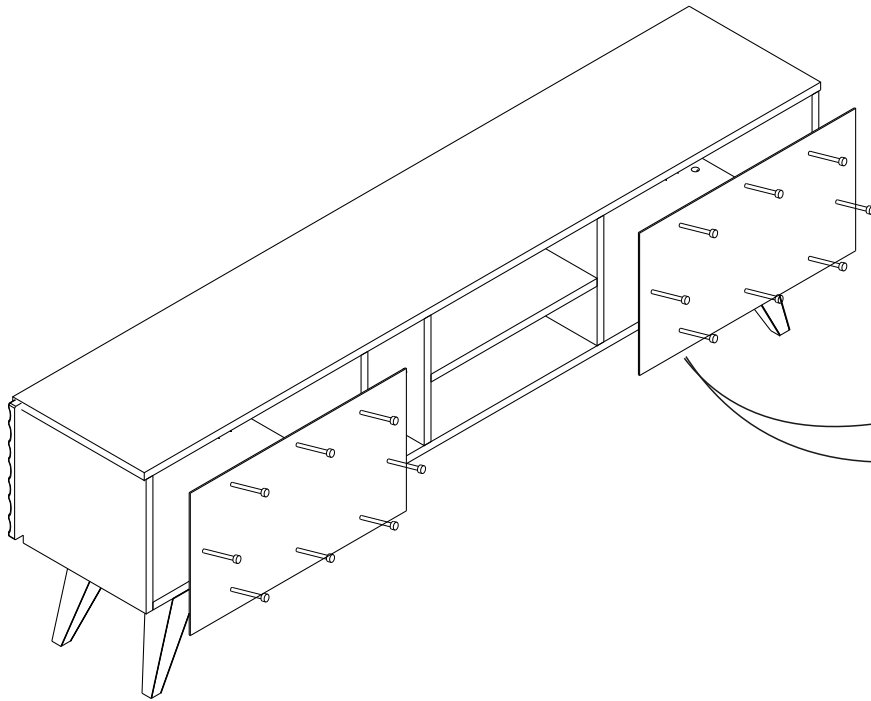
\*You can make some adjustment with screw B for better opening and closing of door





## k.attaching the back panel

- \*Please take the panel and nail down with the help of a hammer
- \*For the best result use all nails given in the hardware pack



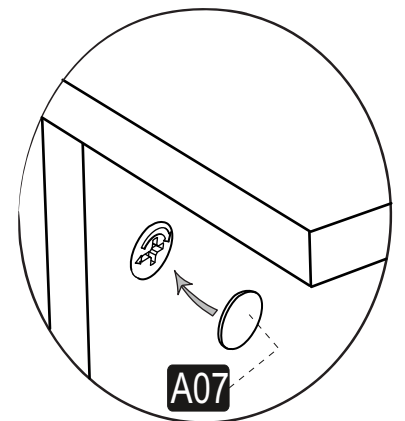
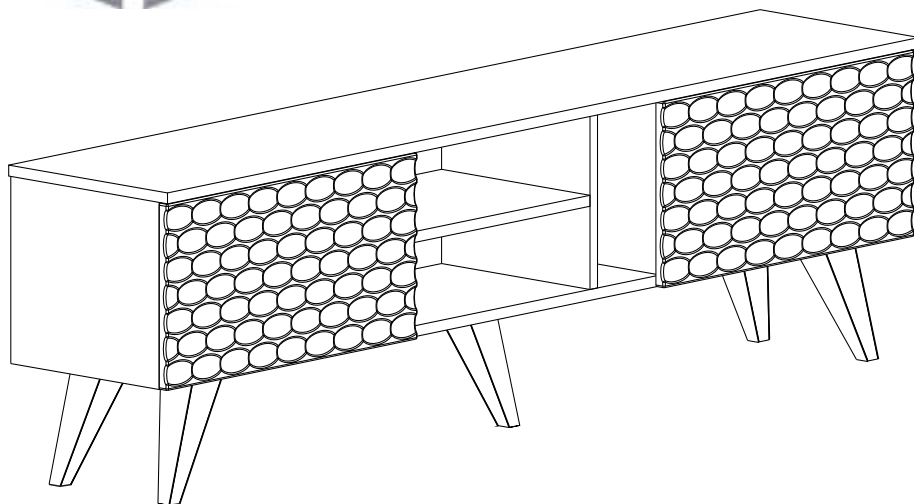
26x

A40



## l.placing the covers

- \*For the best appearance of your furniture please place all A07(cover) onto the A02 (minifix head).



Enjoy your

product!