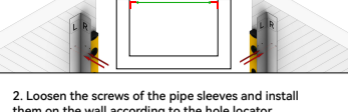


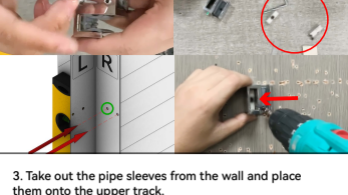
Instruction Manual

GD11

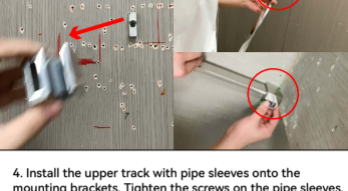
1. Use the hole locator to set the screw holes for the pipe sleeves. Ensure the hole locator stays level.



2. Loosen the screws of the pipe sleeves and install them on the wall according to the hole locator.



3. Take out the pipe sleeves from the wall and place them onto the upper track.



4. Install the upper track with pipe sleeves onto the mounting brackets. Tighten the screws on the pipe sleeves.



5. Install the wall clip and the buffer rubber strip onto the glass.



Notice:
Make sure the plastic protector between the glass hole and metal is correctly installed. Glass shouldn't touch the metal parts at any time.

6. Loosen the screws of the mirror nails. Install the glass to the upper track and screw the mirror nails onto the glass.



7. Ensure the fixed glass is vertically level and tighten the screw to the wall clip.



8. Install the lower slider and tighten the screw to the floor. Install the water blocking material horizontally.



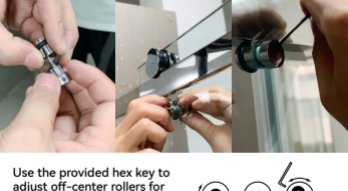
9. Loosen the screws of the pulleys. Install the pulleys to the movable glass and tighten the screws.



10. Install the glass onto the lower slider and hang the glass on the upper track.



11. Loosen the lids of anti jump wheels and install them on the glass.



Use the provided hex key to adjust off-center rollers for out-of-plumb walls, ensuring the best fit in your space.

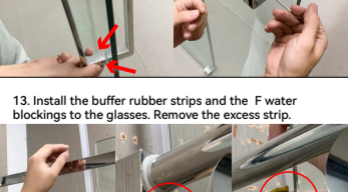


Notice:
Make sure the plastic protector between the glass hole and metal is correctly installed. Glass shouldn't touch the metal parts at any time.

12. Loosen the screws of the pull. Install the pull onto the movable glass.



13. Install the buffer rubber strips and the F water blockings to the glasses. Remove the excess strip.



FINISH