

SKYLINE | DW1D4-72

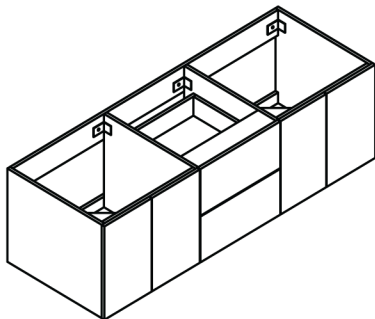
BELMONT
DÉCOR

SKYLINE

DW1D4-72

INSTALLATION INSTRUCTIONS

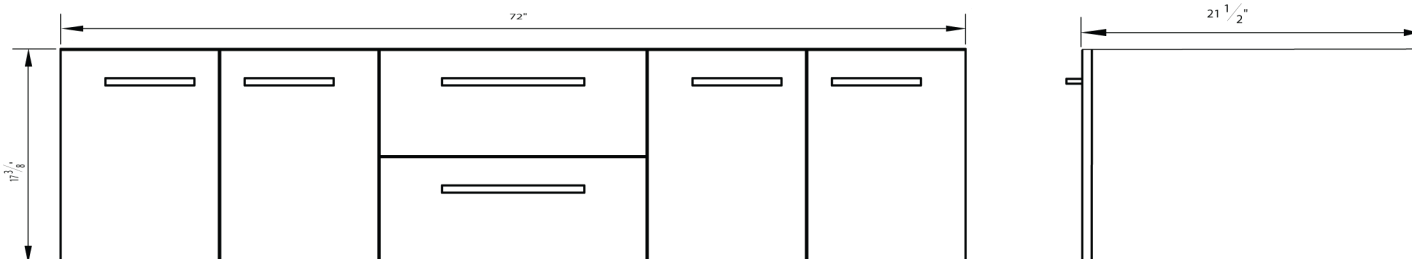
BELMONT
DÉCOR



THANK YOU FOR PURCHASING FROM BELMONT DECOR

Our visual installation guide contains important information to help you install and care for your vanity. Please read these instructions thoroughly before starting your installation. Carefully unpack and inspect your product for damages. Please note that the appearance of your vanity may differ from the illustrations of this guide.

ROUGH-IN DIMENSIONS



CARE AND CLEANING

A new bathroom vanity cabinet can give you more counter space and better storage options. Installing a vanity is almost the same as installing a kitchen cabinet. Vanities tend to get a lot of use and are exposed to moisture, pay particular attention to the quality of construction.

- Avoid direct sunlight and extreme weather changes.
- Dust the vanity frequently with a soft, clean, dry and/or lint-free cloth. Clean the surface in the direction of the grain.
- Abstain the use of silicone cleaners and waxes.
- Please note that some chemicals may damage the finish.
- Clean excess water and spills immediately by blotting rather than wiping. Water left over a long period of time may cause spots.

SUGGESTED TOOLS AND MATERIALS



Philips Screwdriver



Tape Measure



Safety Glasses



Level



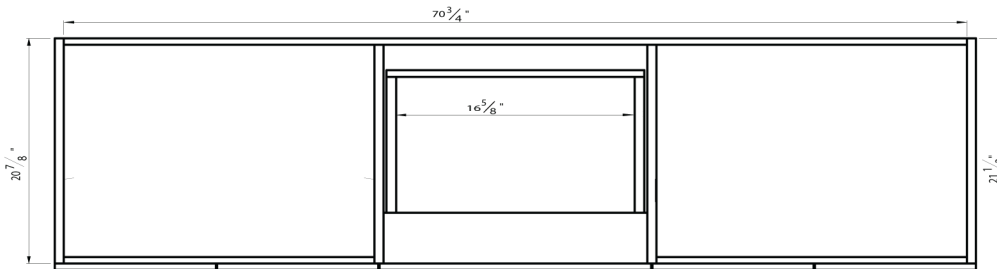
Drill

SKYLINE

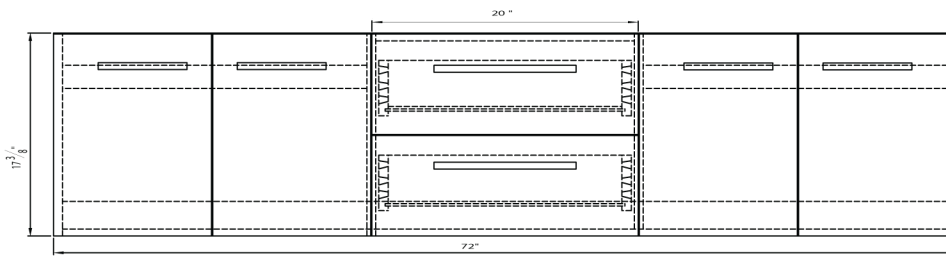
DW1D4-72
SPECIFICATION SHEET

BELMONT
DÉCOR

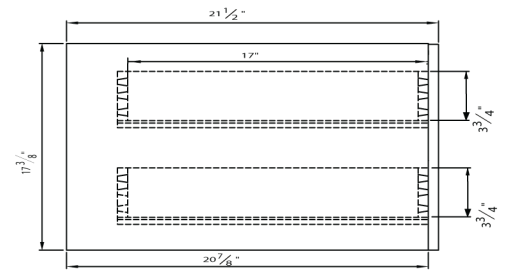
PRODUCT DIAGRAM



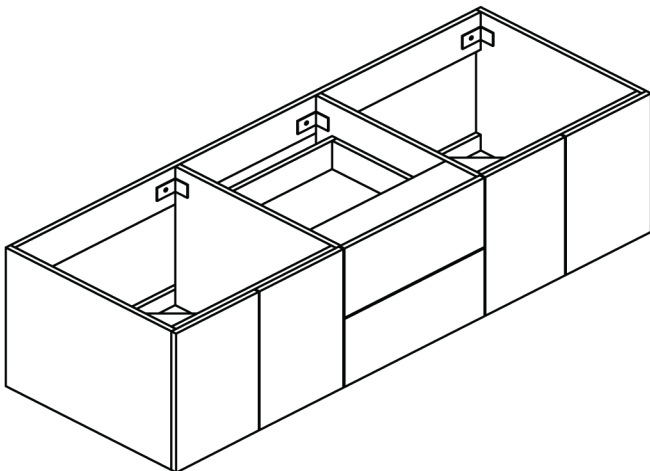
TOP



FRONT



SIDE



FEATURES

- Four doors with soft-closing hinges
- Two drawers with soft-close glides
- Solid wood frame

COLORS / FINISHES

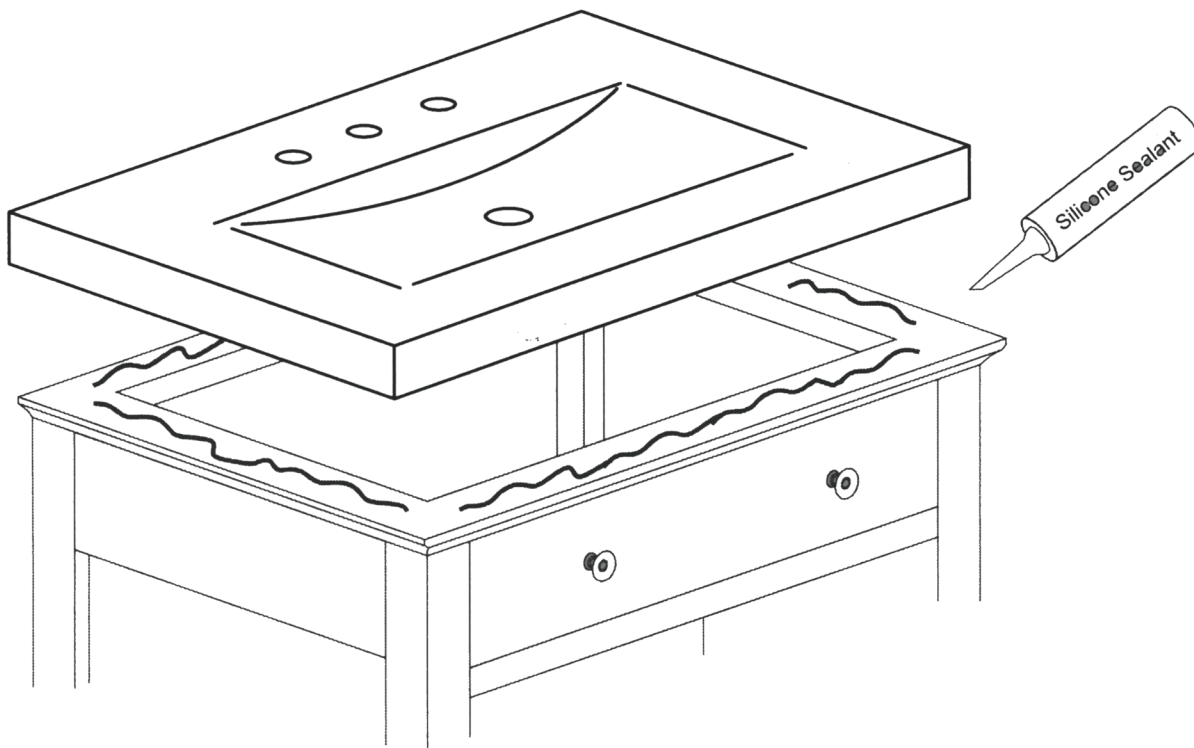
- BK Black
- ES Espresso

NOMINAL DEMENSIONS

- 72" Width x 21.5" Depth x 17.375" Height



CAUTION! Risk of product damage. Do not use oil-based sealers or plumbers putty with this product. These products will stain the surfaces permanently



NOTE: Sink style, shape, cutout on top, and vanity may vary from the picture above. For illustrative purposes only

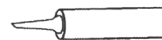


Safety Glasses

SUGGESTED TOOLS AND MATERIALS



Level



Silicone Sealant

VANITY TOP INSTALLATION

1. Install the cabinet / vanity according to the cabinet / vanity manufacturer
2. Check to confirm the vanity top sits leveled on top of the vanity
3. Apply silicone sealant to the top of cabinet / vanity as shown above
4. Install faucet and drain assembly per the manufacturer's instructions

CARE AND CLEANING

- Our countertops are factory sealed with a penetrating sealer. We highly recommend sealing your countertop before its first use with a natural stone sealer. Refer to the instructions on the stone sealer container for proper application.
- Routine cleaning of the countertop will reduce the need for heavy cleaning and polishing.
- Use a soft cloth after each use to minimize soap scum
- Never use strong/ abrasive cleaners. For general cleaning, use mild soap and water on natural stone cleaners. Do not use abrasive detergents or cleaning pads, which can damage the surface of the stone. Always test your cleaning solution on unnoticeable areas before applying to the entire surface.
- Never let cleaners sit on the surface of the stone for long periods of time.
- Periodically, re-apply the natural stone sealer as warranted by use. Refer to the instructions on the stone sealer container for proper application.

