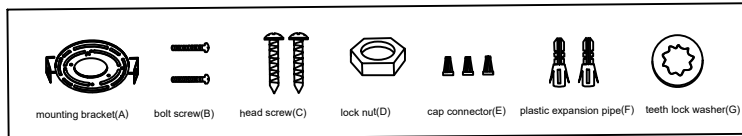
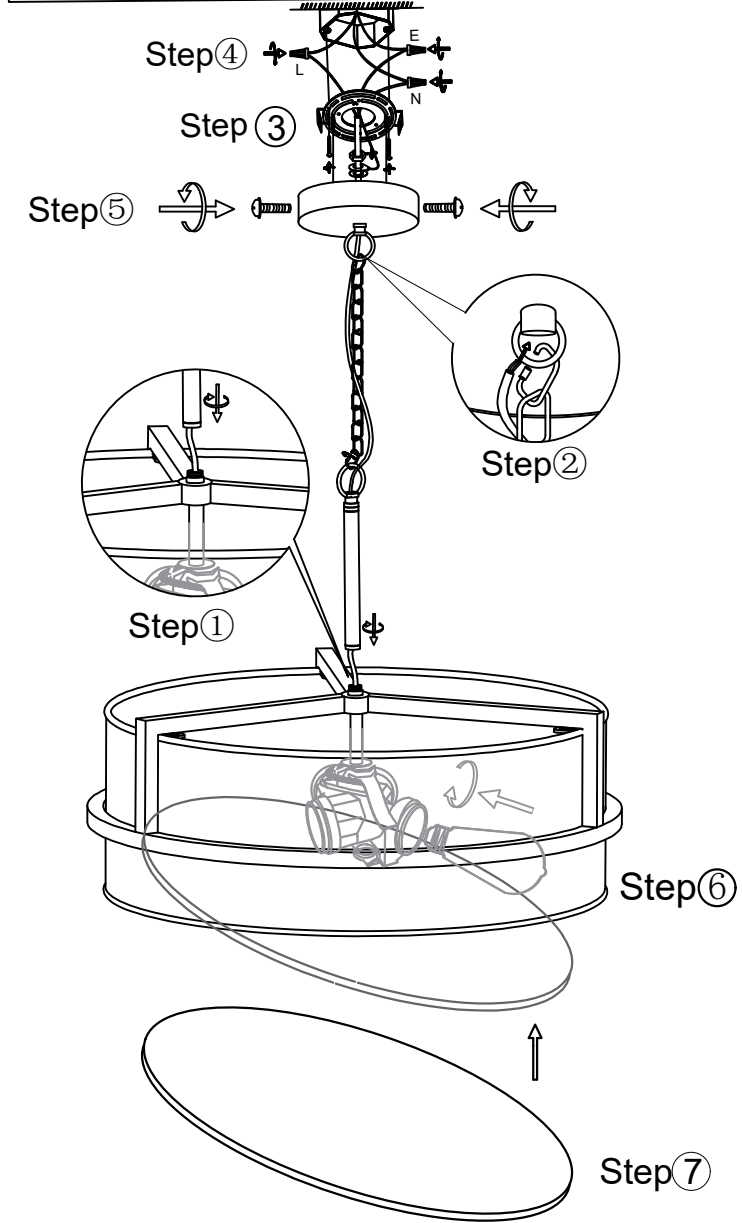


Hardware Package List



mounting bracket(A) bolt screw(B) head screw(C) lock nut(D) cap connector(E) plastic expansion pipe(F) teeth lock washer(G)



# ASSEMBLY AND INSTALLATION INSTRUCTIONS

**WARNING:** TO AVOID RISK OF ELECTRICAL SHOCK, BE SURE TO SHUT OFF POWER BEFORE INSTALLING OR SERVICING THIS FIXTURE.

1. Before installing, consult local electrical codes for wiring and grounding requirements.
2. Read and save these instructions.

## Installation Steps

Turn off the power at fuse or circuit box

### Assembly of the fixture body

Check if all the accessories are included.

1. Let the wire of the fixture go through the lampshade and the tube, rotate to fix the both parts to the fixture.
2. Hang the fixture to the canopy with chain, let the wire go through the chain and the canopy.
3. Install the bracket to the ceiling junction box with bolt screw.
4. Connect the wire to the house line with cap connector.
5. Install the fixture to the bracket with head screw.
6. Install the bulb (not included in the package).
7. Install the bottom plate.

## Attention

1. Please install it by a licensed electrician.
2. Due to the different display, the real color would be different from the image.
3. Due to the manual measurement of lamp body size, there may be a deviation of 1/2 inch.
4. If there any quality problem, missing parts or other something wrong of the item, please feel free to contact us and we will try our best to help you.