

WARRANTY EXCLUSIONS AND LIMITATIONS

This Limited Product Warranty applies only to the original purchaser of the True & Tidy branded Product that was purchased from True & Tidy directly or True & Tidy's authorized reseller. Without limiting the foregoing, the Limited Product Warranty does not apply to any (a) True & Tidy products and services other than the Brand New True & Tidy branded products which are purchased directly from True & Tidy or from True & Tidy's authorized reseller, (b) non-True & Tidy products, even if included or sold with a Product, including, without limitation, any counterfeit products, (c) products that are, or True & Tidy reasonably believes to be, stolen, (d) consumables (such as cleaning pads). This Limited Product Warranty does not apply to third party products or accessories, including but not limited to products with the "Made for True & Tidy" or "Works with True & Tidy" logos or advertising.

This Limited Product Warranty does not apply to a product or part of a product that has been replaced, repaired, serviced, altered, refurbished or modified by anyone who is not authorized by True & Tidy, nor does it apply to any cosmetic damage such as scratches and dents. In addition, this Limited Product Warranty does not apply to damage or defects caused by (a) use with non-True & Tidy products such as non-True & Tidy steamer liquid; (b) accident, abuse, misuse, mishandling, flood, fire, earthquake or other external causes; (c) normal wear and tear or aging of the product such as discoloration of product; or (d) operating the product (i) outside the permitted or intended uses described by True & Tidy under True & Tidy's Product User Manual, (ii) not in accordance with instructions provided by True & Tidy, or (iii) with improper voltage or power supply, water or other add-on products.

No True & Tidy, authorized reseller, distributor, agent, reseller, or employee is authorized to make any modification, extension or addition to this Limited Product Warranty. If any term contained herein is held to be illegal, void or unenforceable, the legality or enforceability of the remaining terms shall not be affected or impaired.

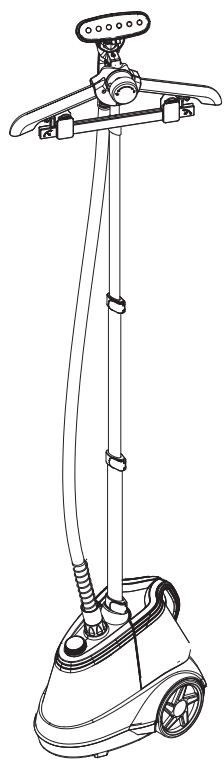
If you have any questions regarding this warranty, you may contact us through our website: www.trueandtidy.com

LIMITATION OF DAMAGES

Except to the extent prohibited by applicable law, True & Tidy shall not be liable for any incidental, indirect, special or consequential damages, including, without limitation, loss of profits, revenue, resulting from any breach of express or implied warranty or condition or under any other legal theory, even if True & Tidy has been advised of the possibility of such damages. True & Tidy warranty and liability is only limited to replacement of the defective item.

LIFE • SMART • HANDY • RELIABLE • INNOVATIVE • NEW • FUNCTIONAL • DESIGN

True & Tidy®



X5

USE & CARE MANUAL

www.trueandtidy.com

TrueandTidyHome

TrueandTidyHome

TrueandTidyHome

TROUBLE SHOOTING

| PROBLEMS | REASON | SOLUTION |
|---|--|---|
| Unit fails to steam indicating lamp does not illuminate | The unit is not plugged in | Plug in the unit |
| Unit fails to steam indicating lamp illuminates | Household power system problem/fuse is blown | Call a qualified electrician for help. |
| Unit fails to steam indicating lamp illuminates | Mineral build-up | Follow the removal mineral build-up procedure |
| Noise in Steam Hose stops spraying steam | Water Tank is empty | Refill the Water Tank |
| PO PO PO | Water drops gather in the Steam Hose | Straighten the Steam Hose |
| Steam is intermittent | Mineral build-up in Water Tank | Follow the removal mineral build-up procedure |

8

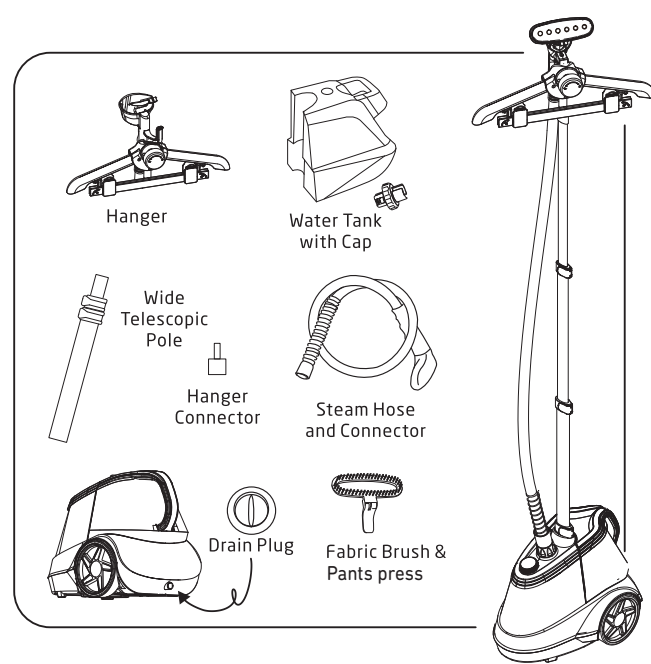
IMPORTANT SAFETY INSTRUCTIONS

At True & Tidy, safe performance is our top priority with any consumer product, so that you can use and trust our products confidently. Please use and operate product with due care and attention placed on the following operating instructions and precautions.

1. Prior to first use, inspect all parts of the steamer to make sure all parts are intact. The steamer must not be used if it has been dropped, if there are visible signs of damage to the body or cord, or if it is leaking.
2. DANGER - any appliance is electrically live even when the switch is off.
3. To reduce the risk of death by electric shock always unplug this steam mop from the electrical outlet immediately after using and before cleaning.
4. Do not reach for an appliance that has fallen in to water. Unplug it immediately.
5. Do not immerse or let appliance be soaked in water. Do not use while bathing or in the shower.
6. This appliance is not a toy and should not be used by children. Close supervision is necessary when this appliance is used near children, or individuals with certain disabilities. Unsupervised use could result in fire or personal injury.
7. Never pull on the cord to disconnect from the electrical outlet; grasp plug and pull to disconnect.
8. To reduce the risk of electric shock, do not disassemble or attempt to repair the appliance; take it to a qualified service person for examination and repair, or call the appropriate toll free number in this manual. Incorrect assembly or repair could cause a risk of fire, electric shock, or injury while steaming.
9. To reduce the likelihood of circuit overload, do not operate another high wattage appliance on the same circuit.
10. Use this appliance only for its intended use. Do not use attachments not specified in this manual.
11. If an extension cord is absolutely necessary, a cord with a 15 ampere rating should be used. A cord rated for less amperage can result in a risk of fire or electric shock due to overheating. Care should be taken to arrange the cord so that the cord cannot be pulled or tripped over.
12. Burns can occur from touching steam output vents, hot water, or steam. Do not hold your hand in front of steam.
13. Do not direct steam at people, animals, plants or clothes while they are being worn.
14. While steam is being emitted, this appliance may cause burns if it is used too close to the skin, scalp or eyes, or if it is used incorrectly. To reduce the risk of contact with hot water emitting from steam vents, test appliance before each use by holding it away from body.
15. Ensure the steamer is properly assembled before use.
16. Do not place the appliance in the same spot for more than 10 seconds to avoid damage from heavy heating.
17. Do not touch the bottom of the appliance during operation.
18. Do not tilt or turn the appliance over when in use. Only use on flat, horizontal surfaces.
19. Do not fill the water tank with hot water or corrosive cleaning agents. Distilled water is strongly recommended.

1

COMPONENTS

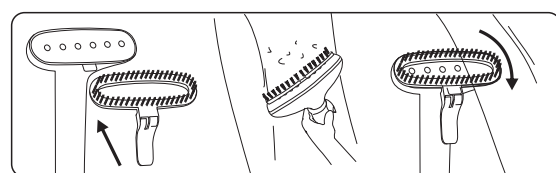


PRODUCT SPECIFICATION

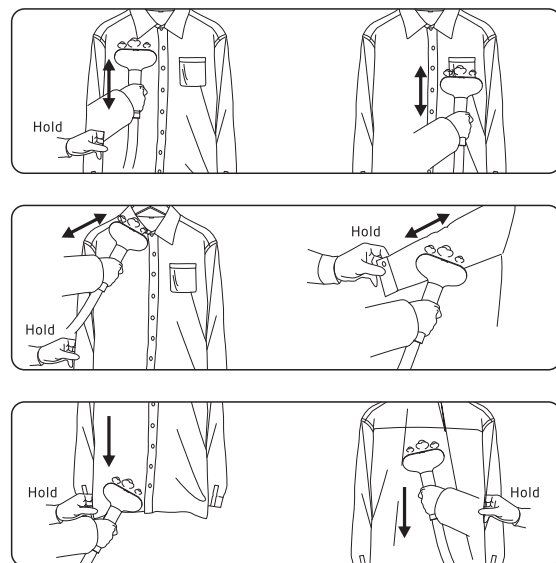
| | |
|---------------------|-------------|
| Model | X 5 |
| Water Tank Capacity | 2.9L |
| Steam Ready Time | 50 seconds |
| Input Voltage | 125V / 60Hz |
| Output Power | 1800W |

2

ACCESSORIES ASSEMBLY AND USE

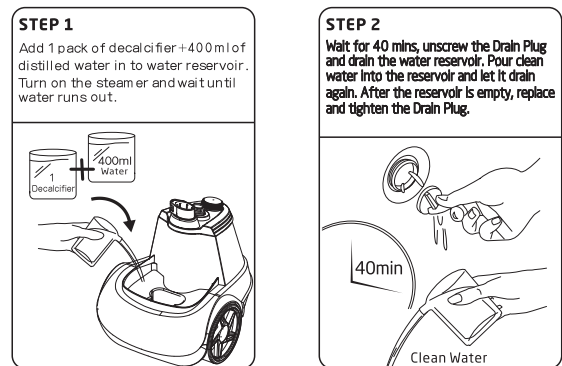


HOW TO STEAM

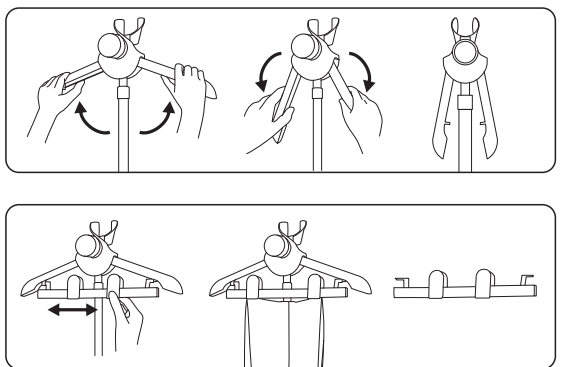


7

REMOVING MINERAL BUILD-UP

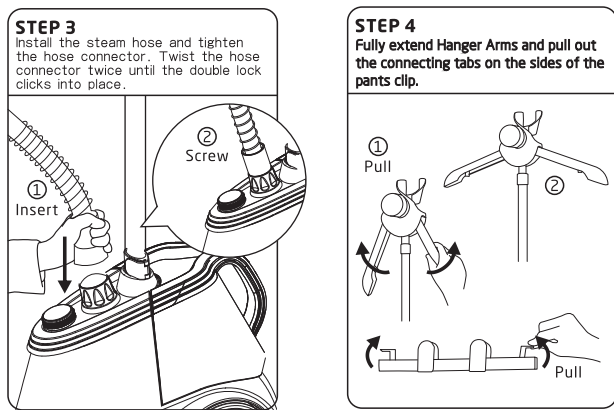
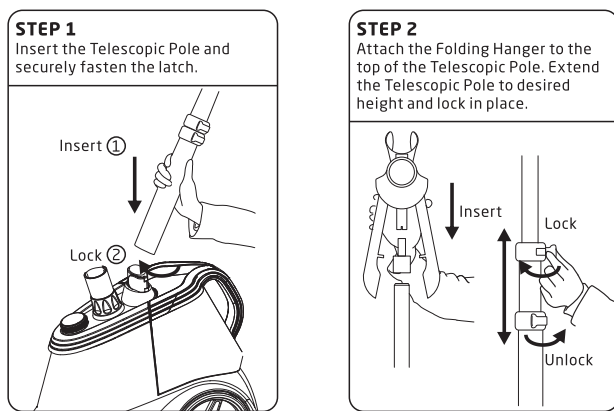


ACCESSORIES ASSEMBLY AND USE



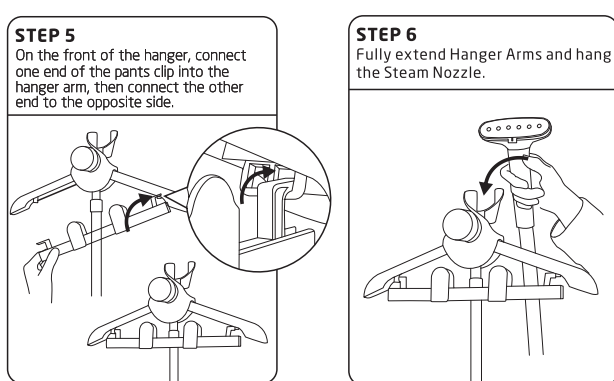
6

SETTING UP YOUR GARMENT STEAMER

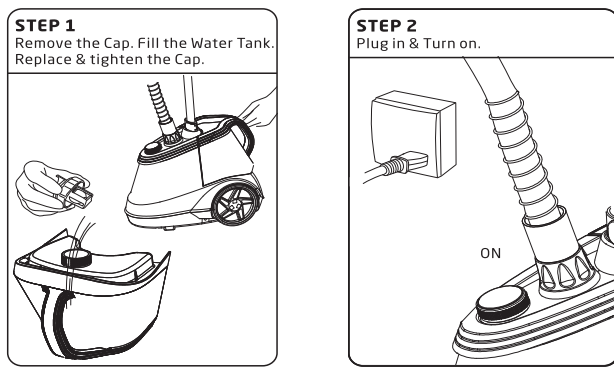


3

SETTING UP YOUR GARMENT STEAMER

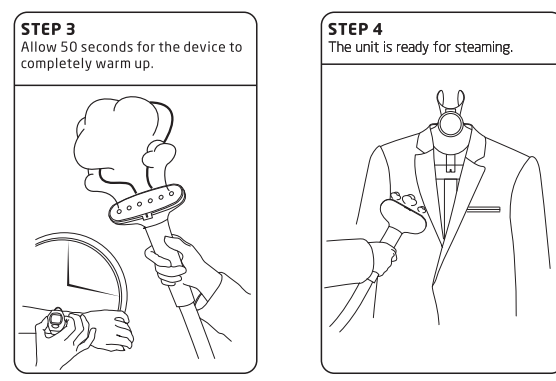


INSTRUCTIONS FOR USE

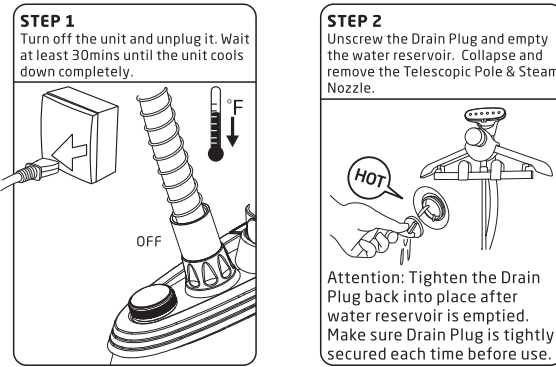


4

INSTRUCTIONS FOR USE



MAINTENANCE AND CLEANING



5