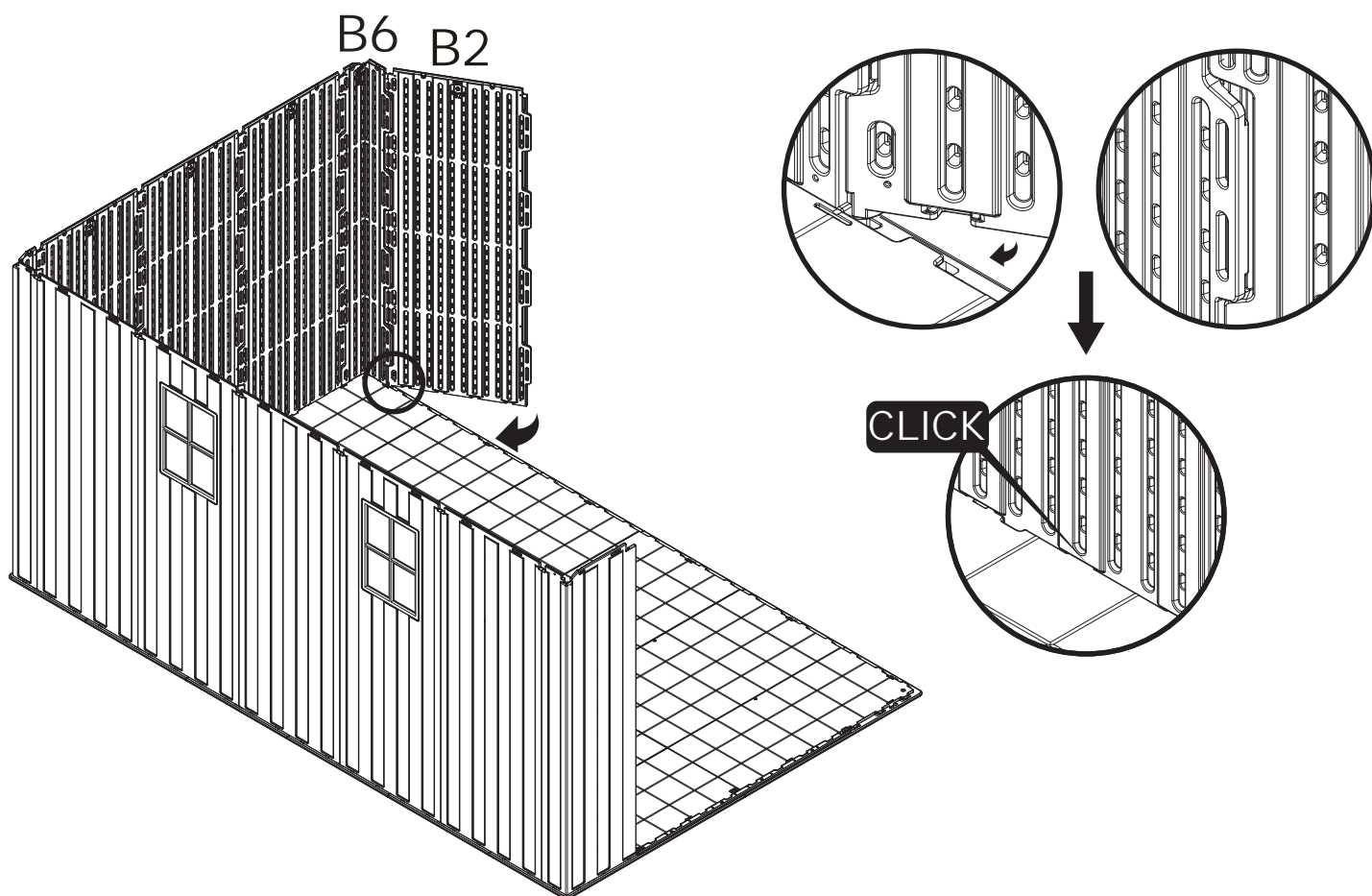
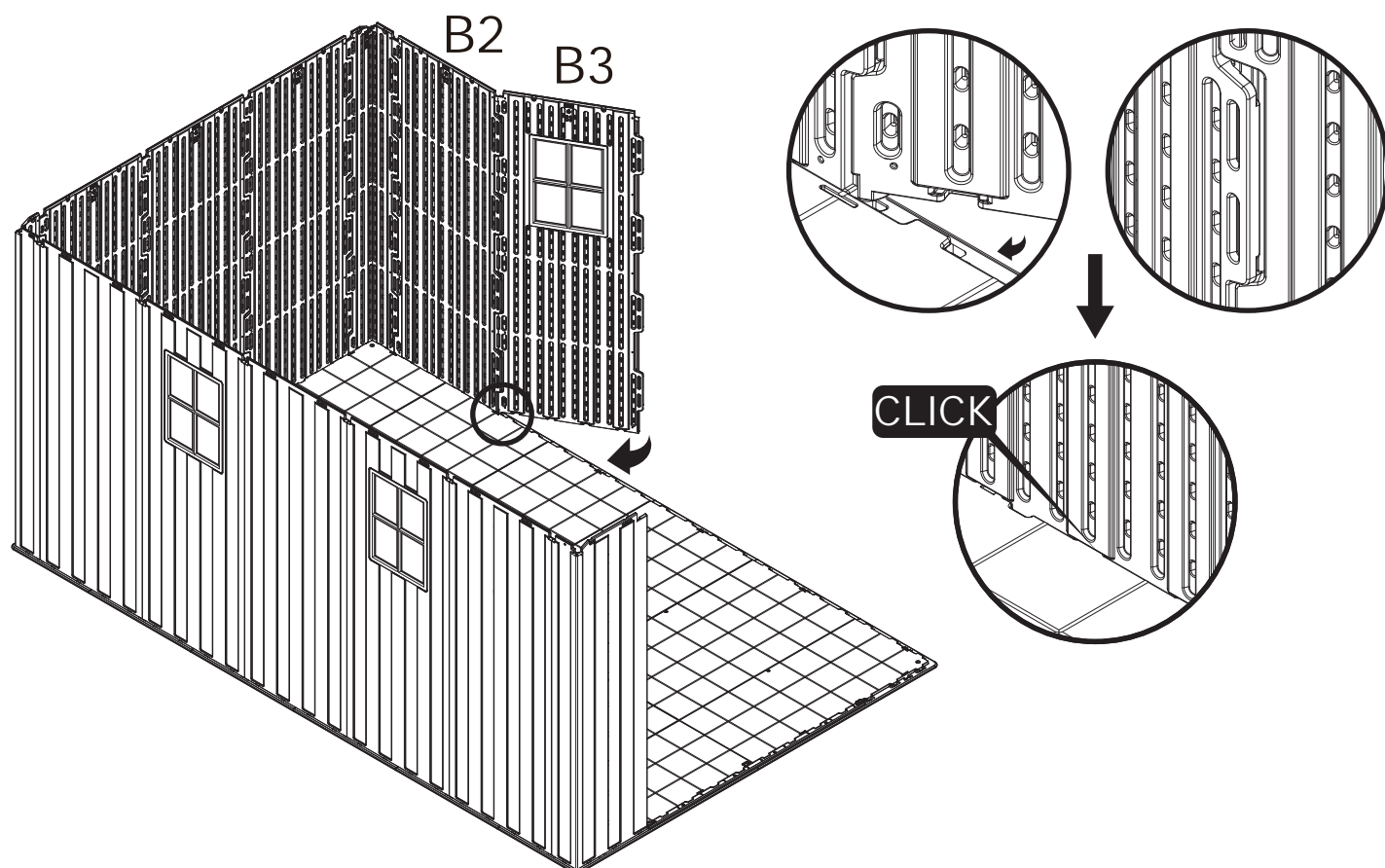


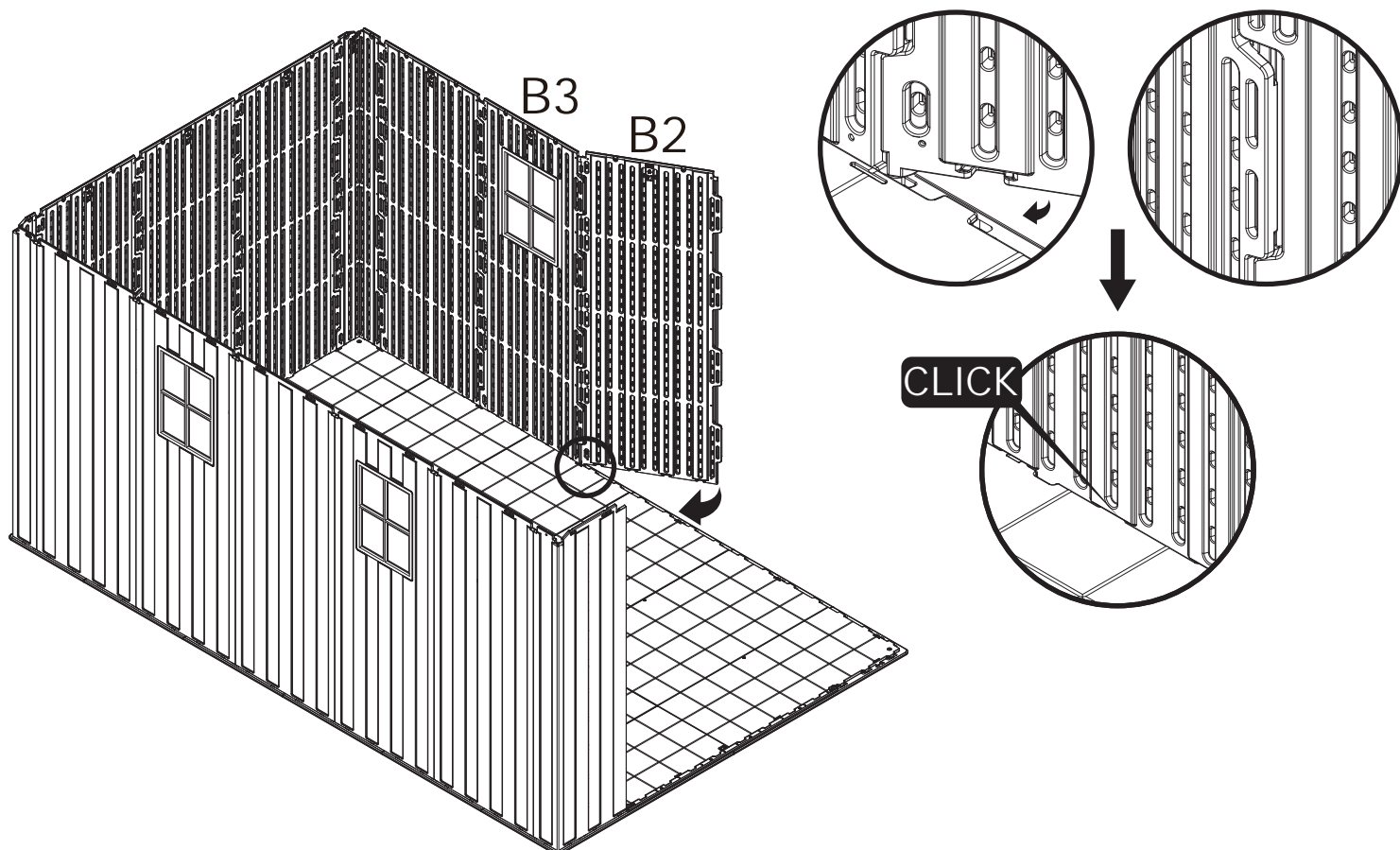
STEP 28



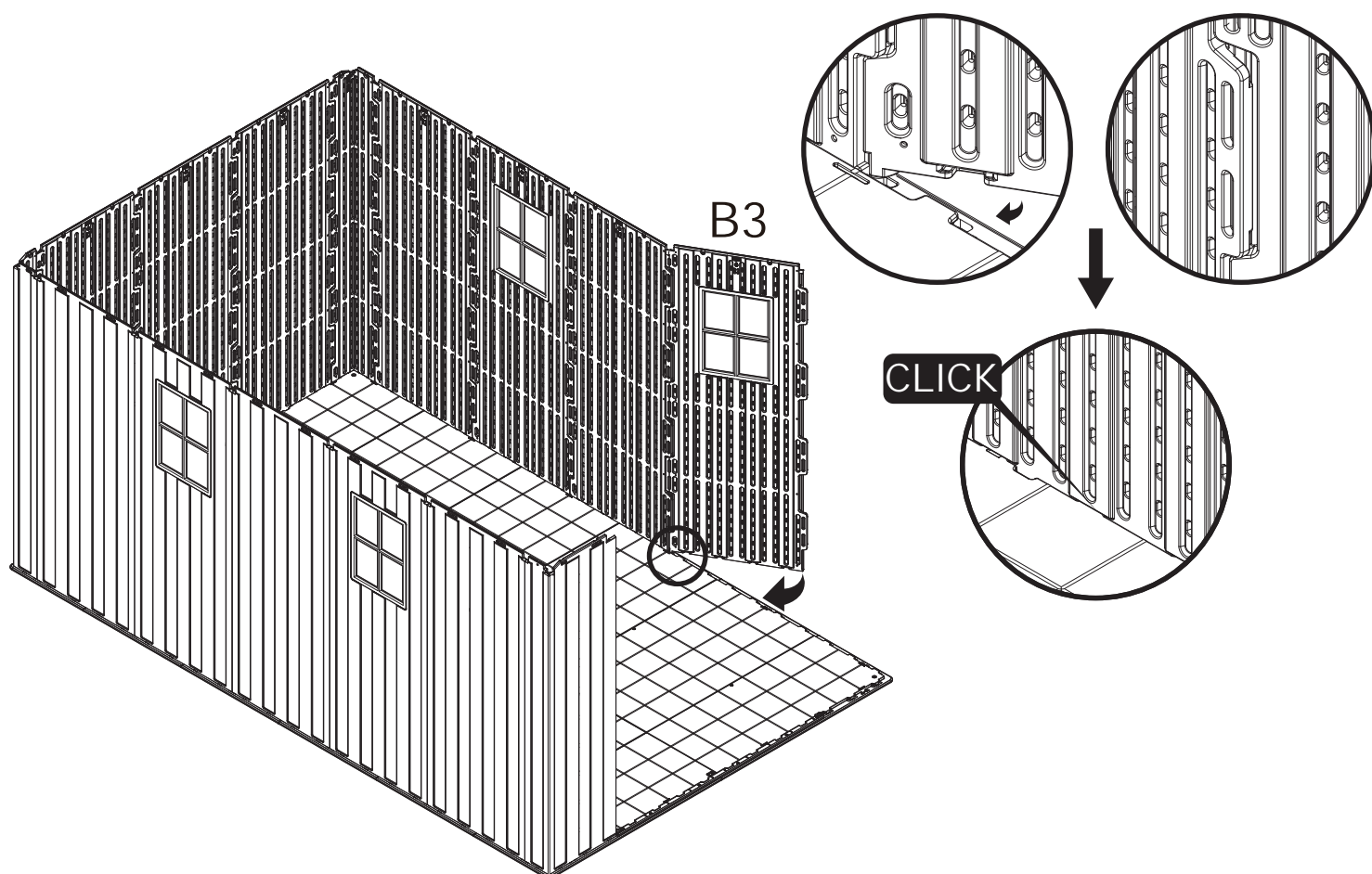
STEP 29



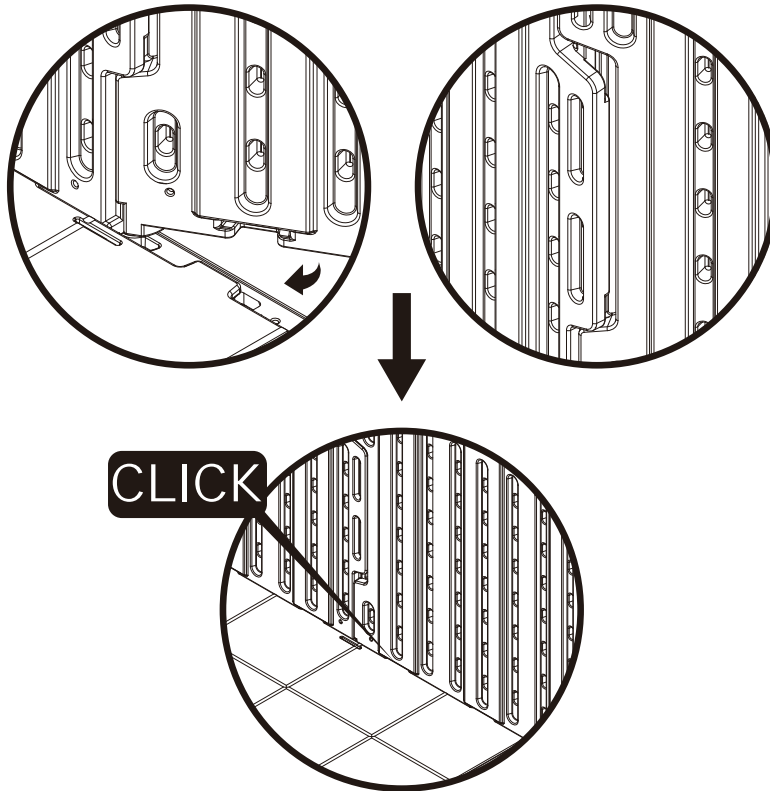
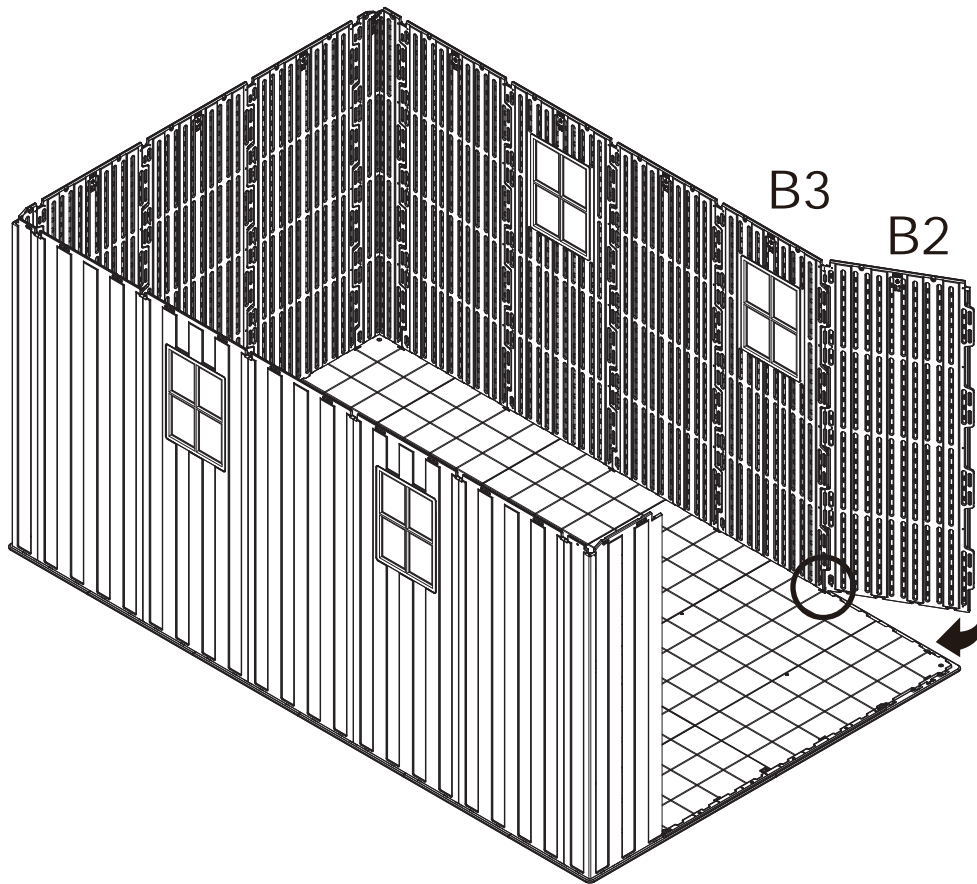
STEP 30



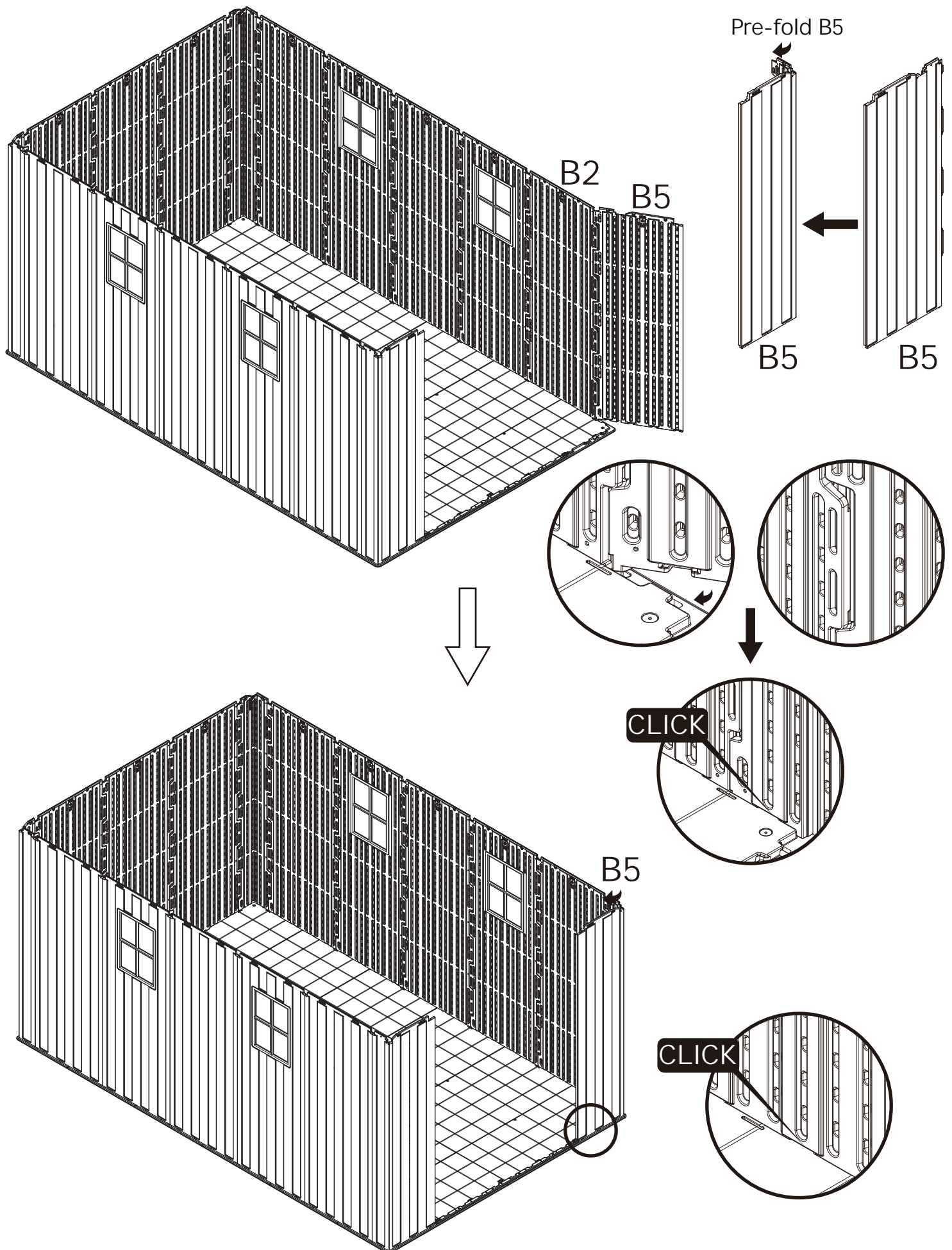
STEP 31



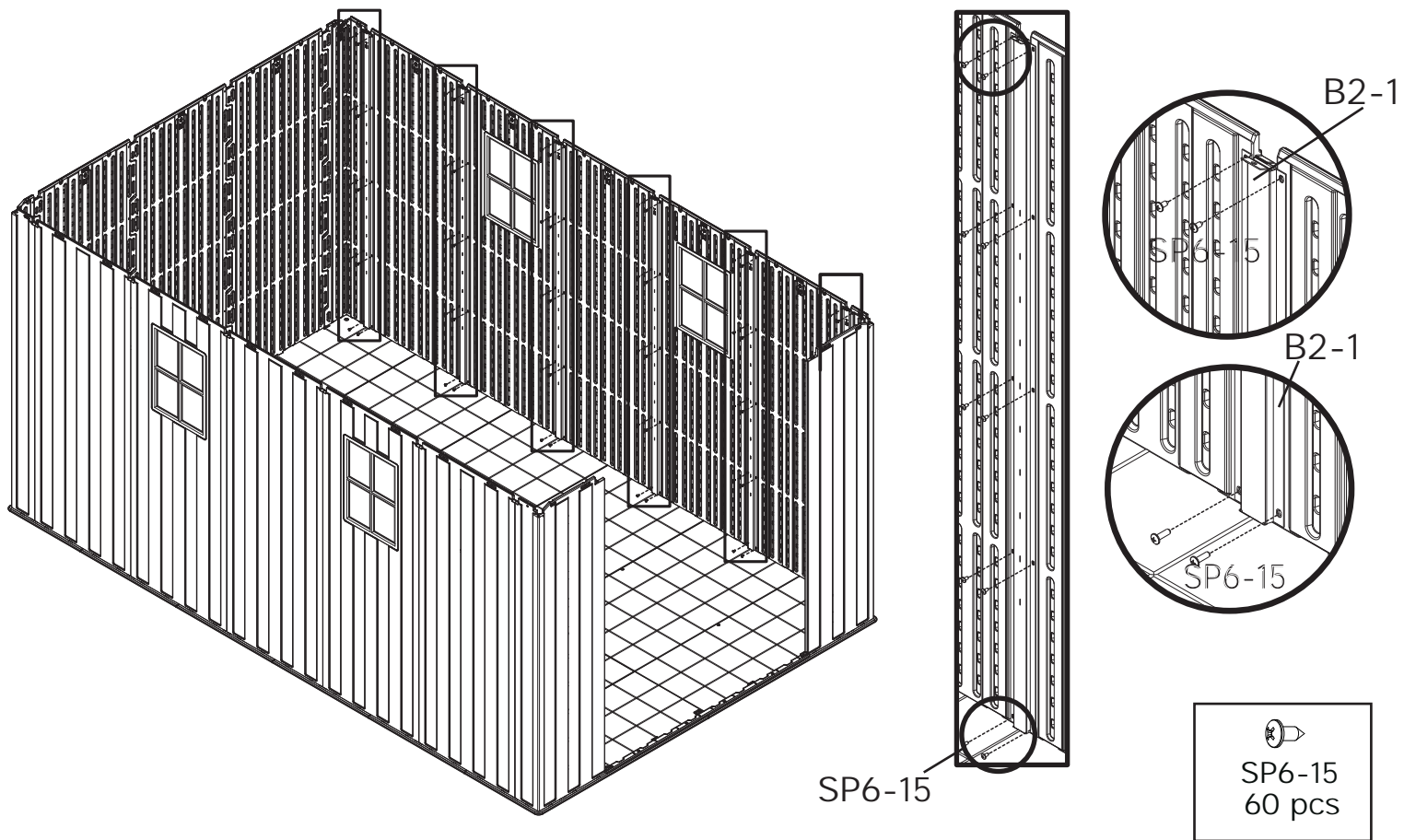
STEP 32



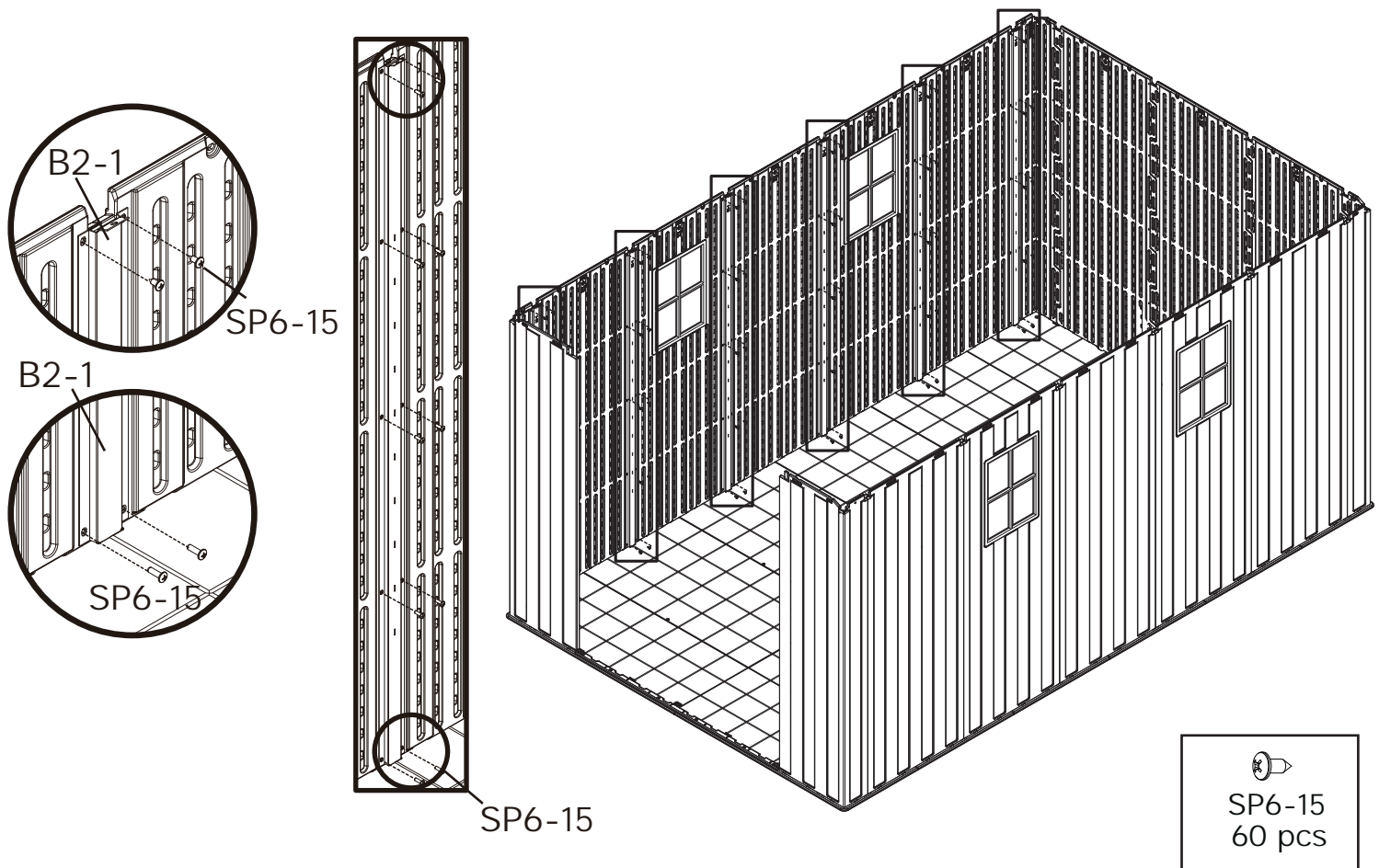
STEP 33



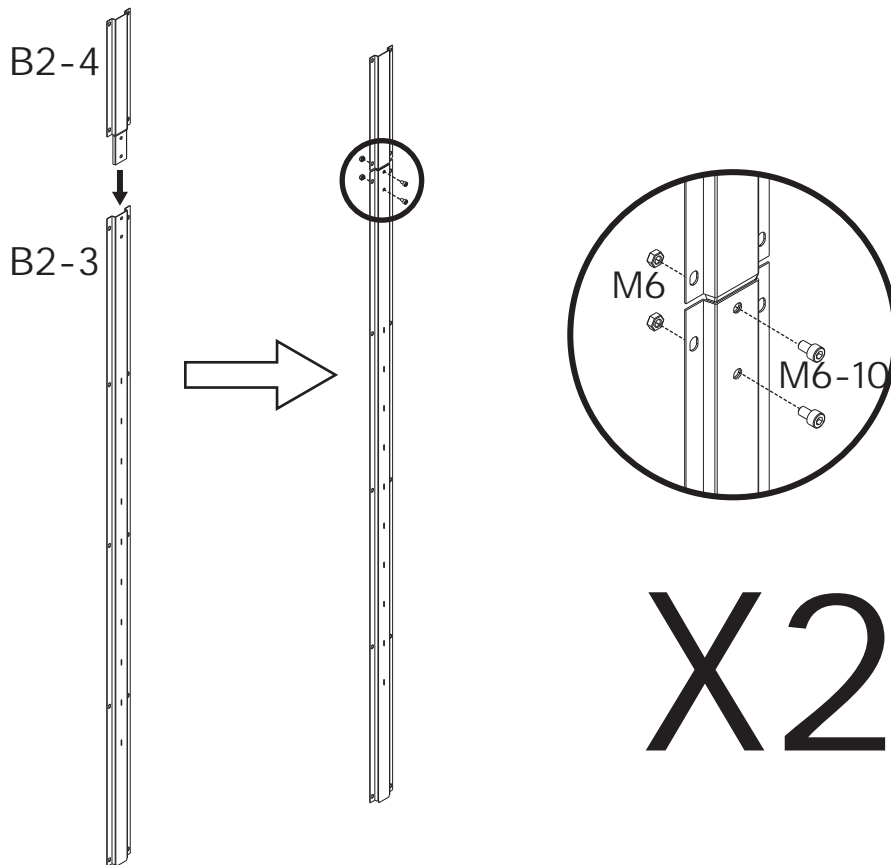
STEP 34



STEP 35

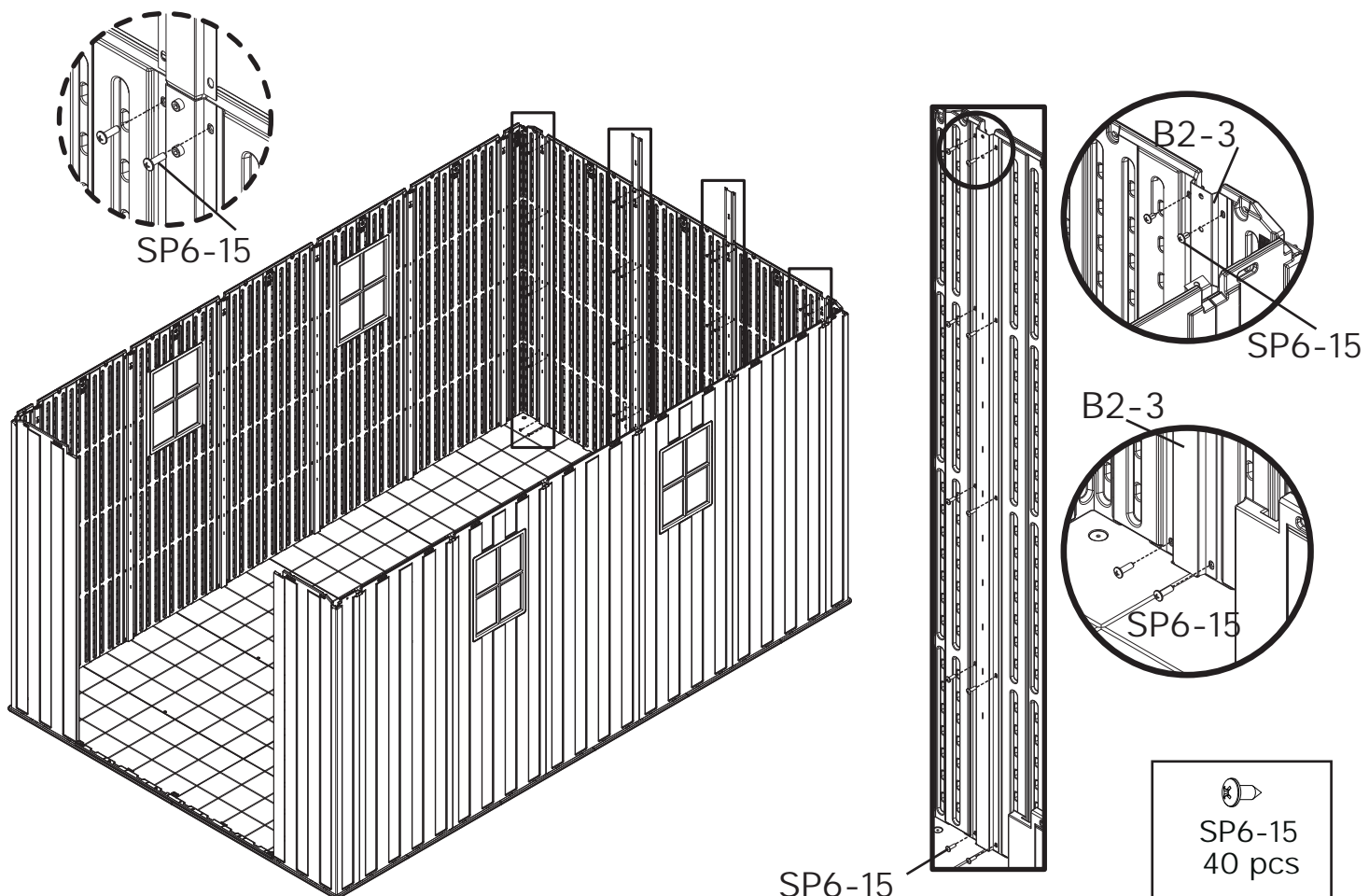


STEP 36



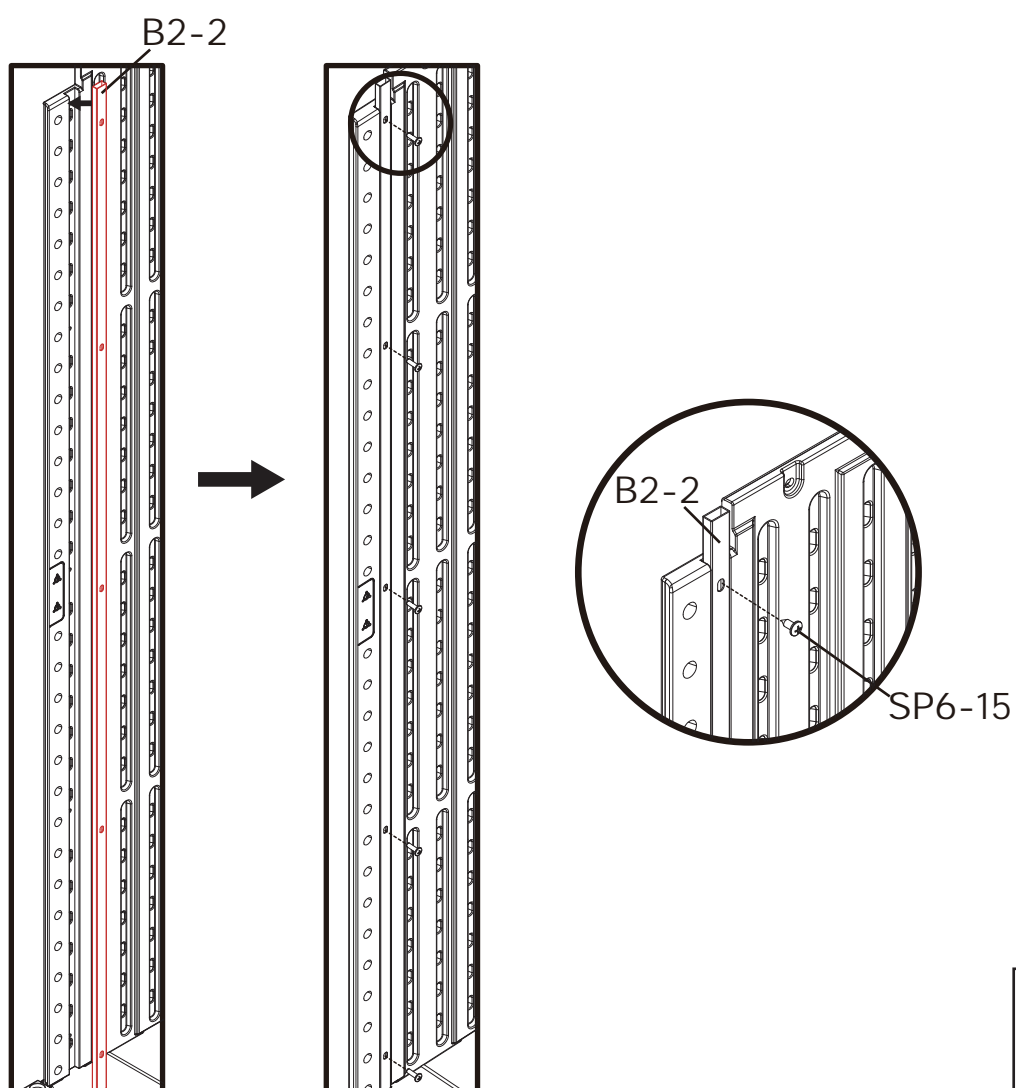
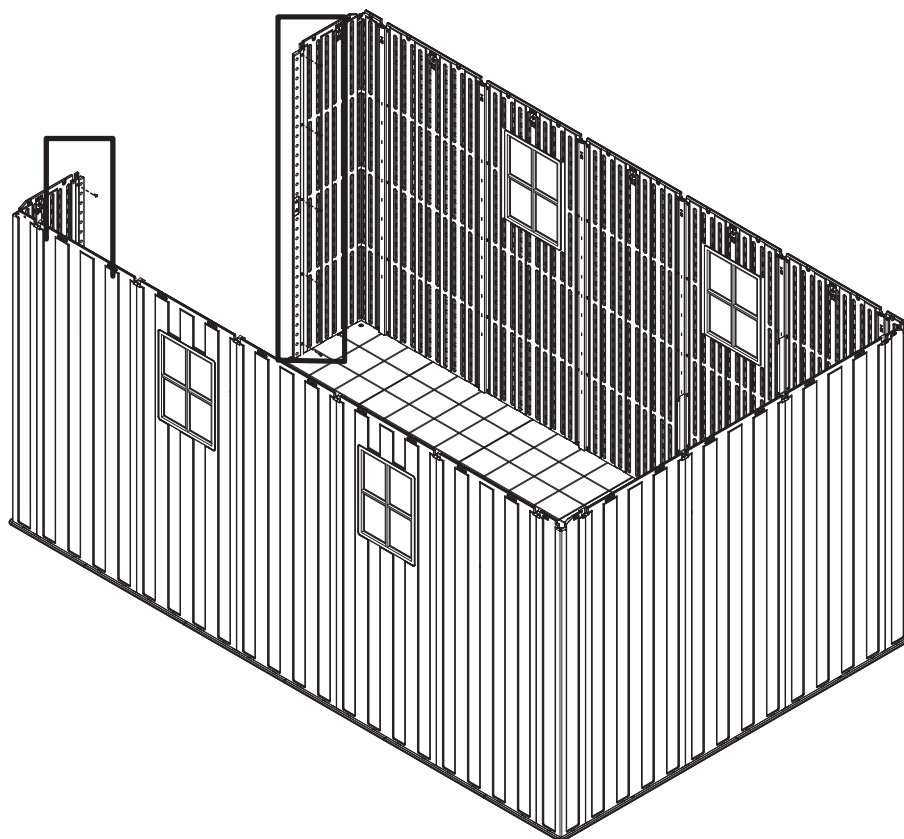
M6-10 4 pcs	M6 4 pcs

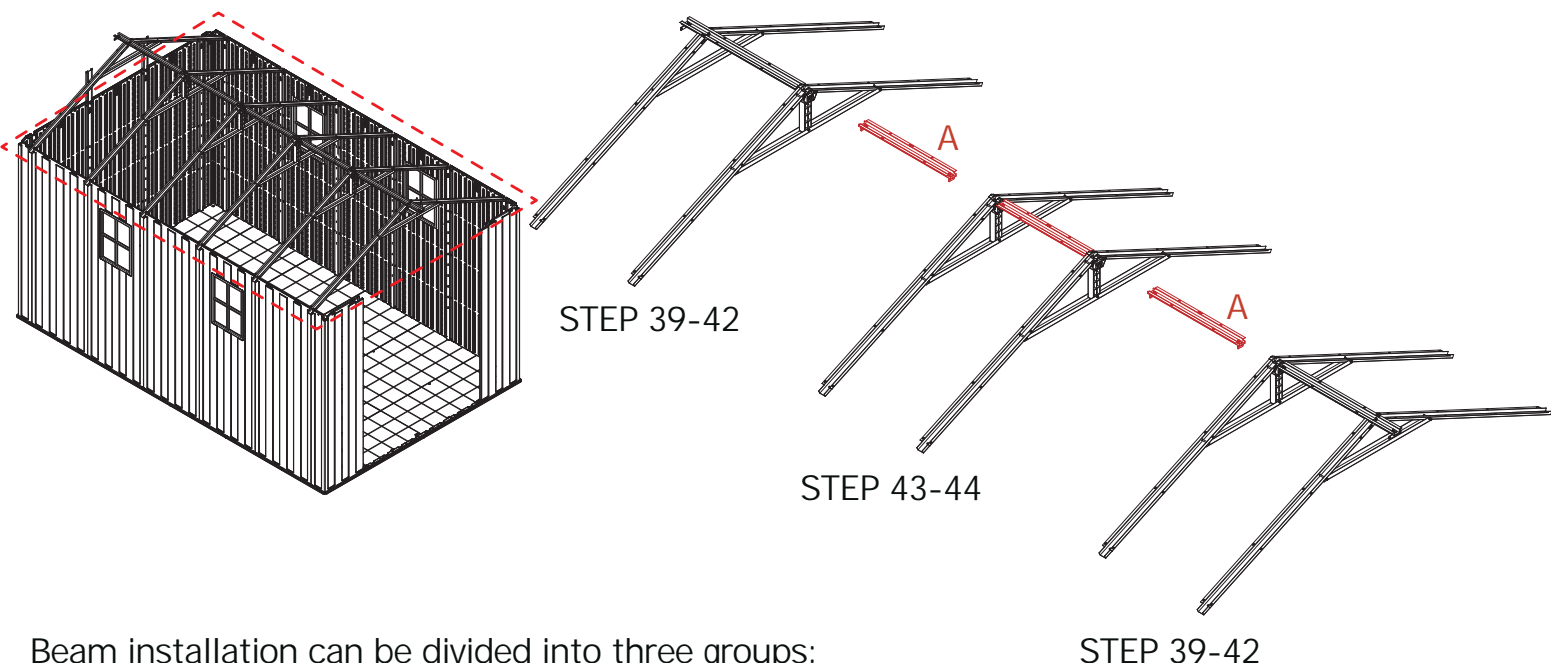
STEP 37



SP6-15 40 pcs

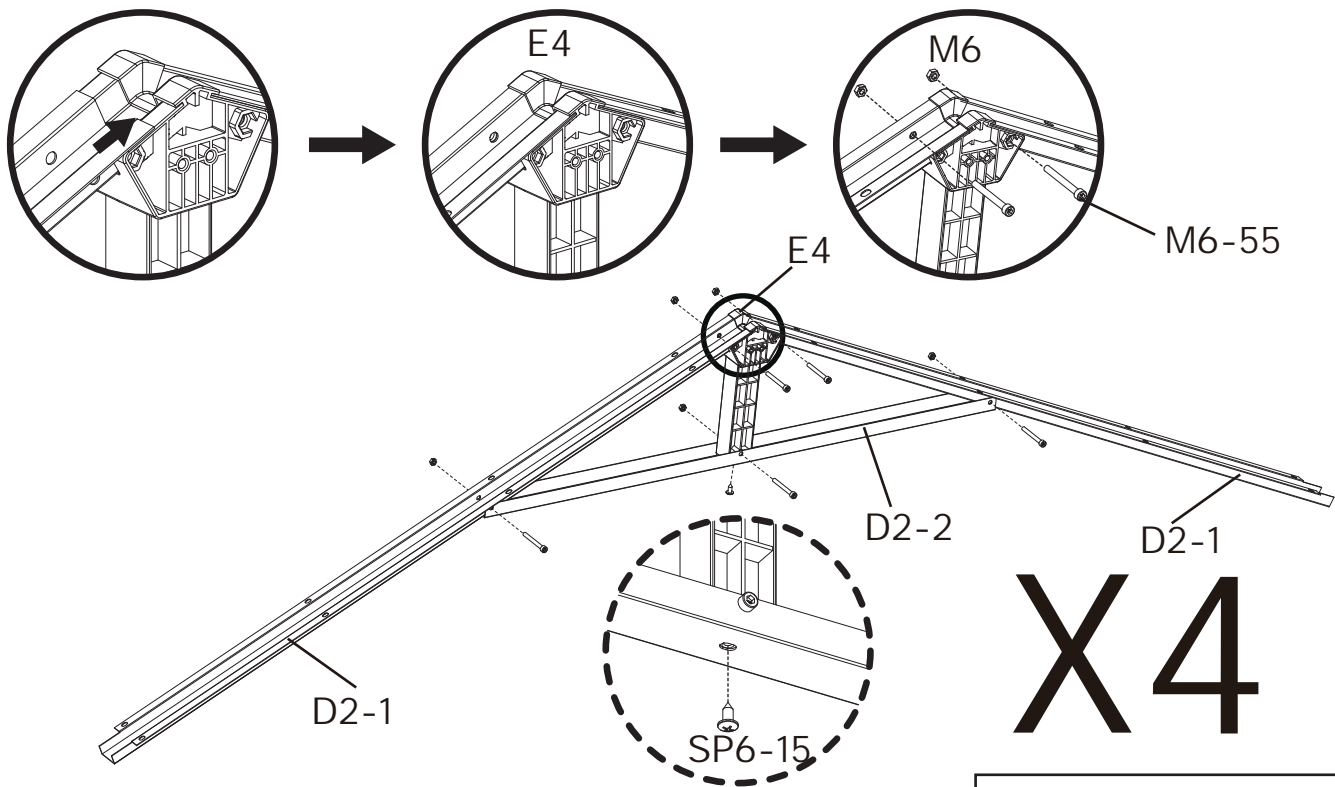
STEP 38





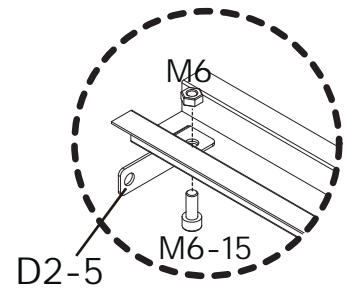
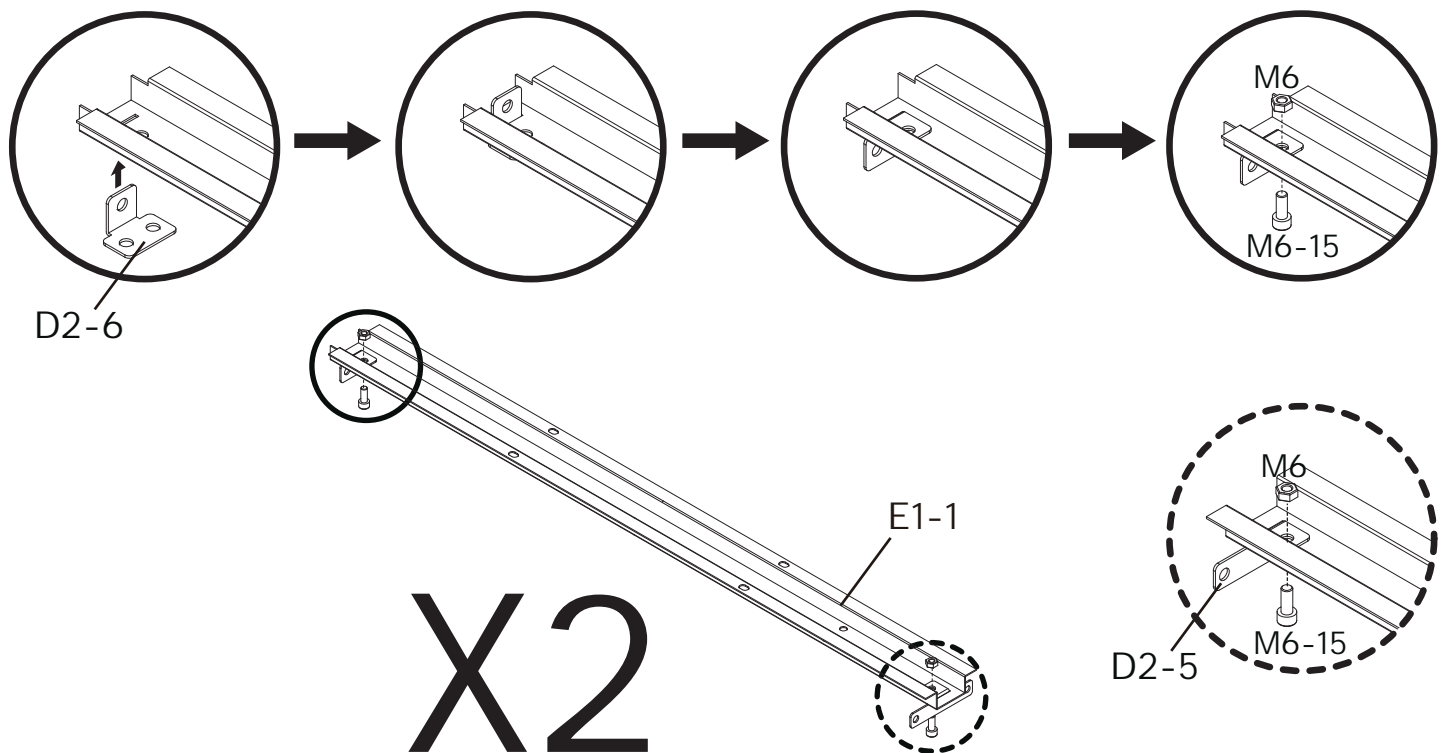
Beam installation can be divided into three groups: the installation steps for the front and rear components can be found in STEP 39-42, while the installation steps for the middle components are detailed in STEP 43-44. Install the front and rear components first, then install the middle components. When installing the middle components, please use your hands to support Area A.

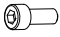

STEP 39



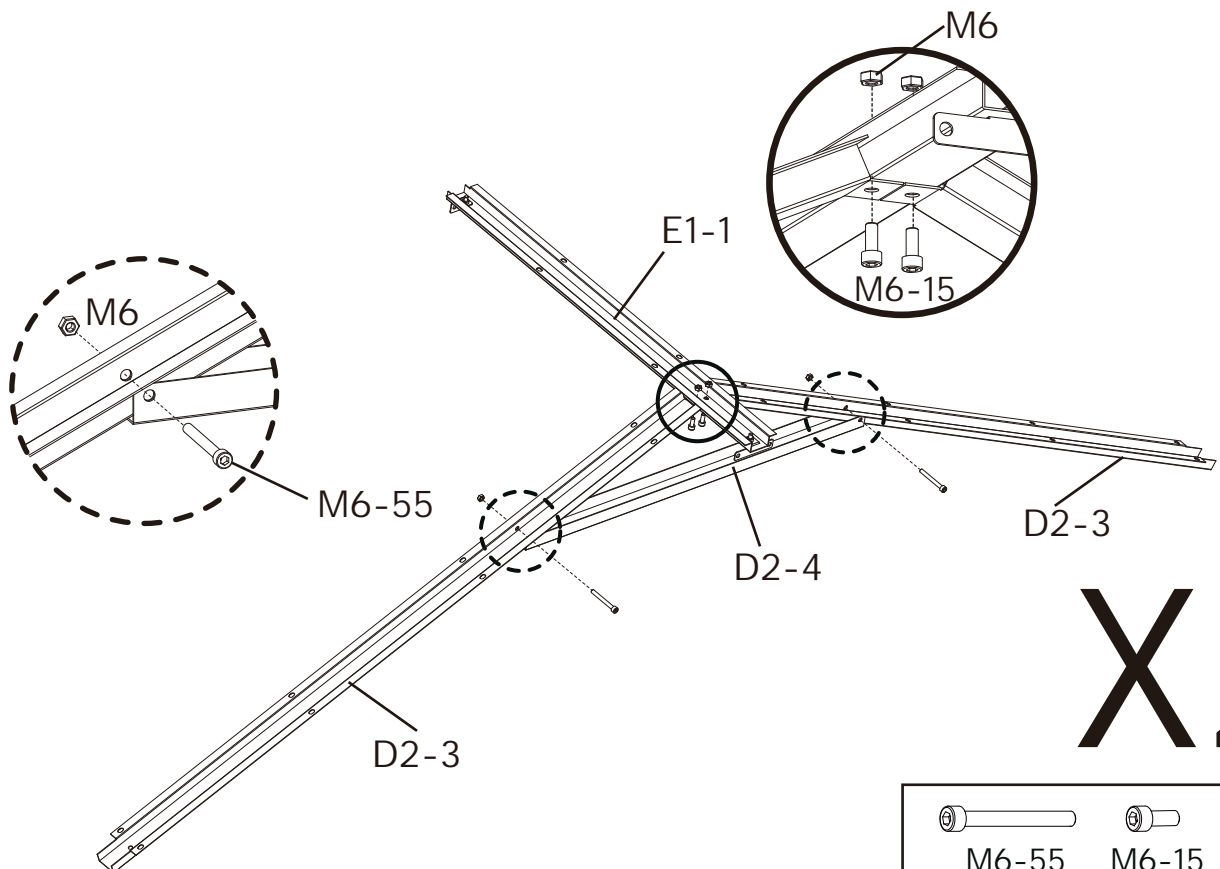
M6-55	SP6-15	M6
20 pcs	4 pcs	20 pcs

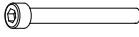


STEP 40



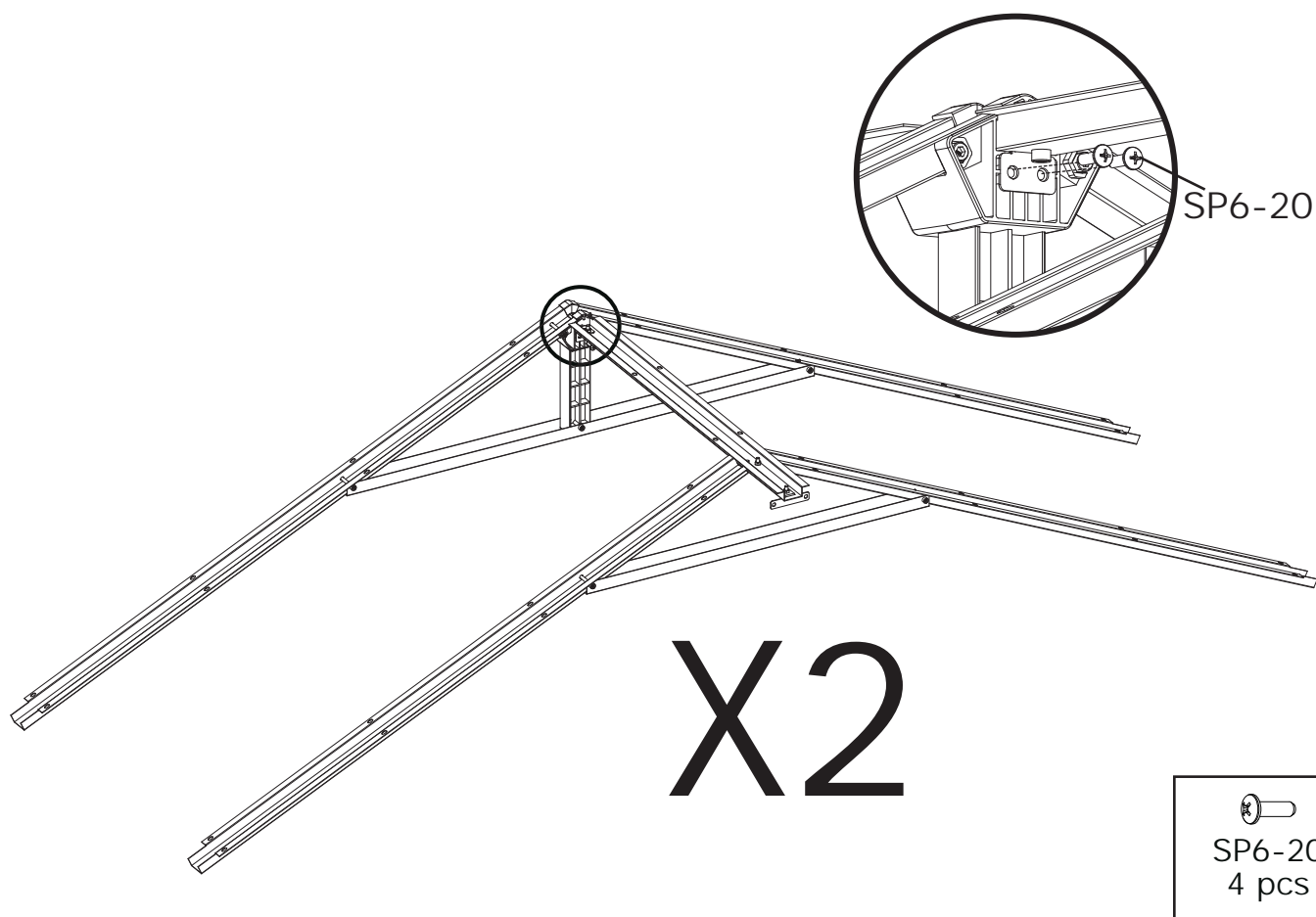
	
M6-15 4 pcs	M6 4 pcs

STEP 41

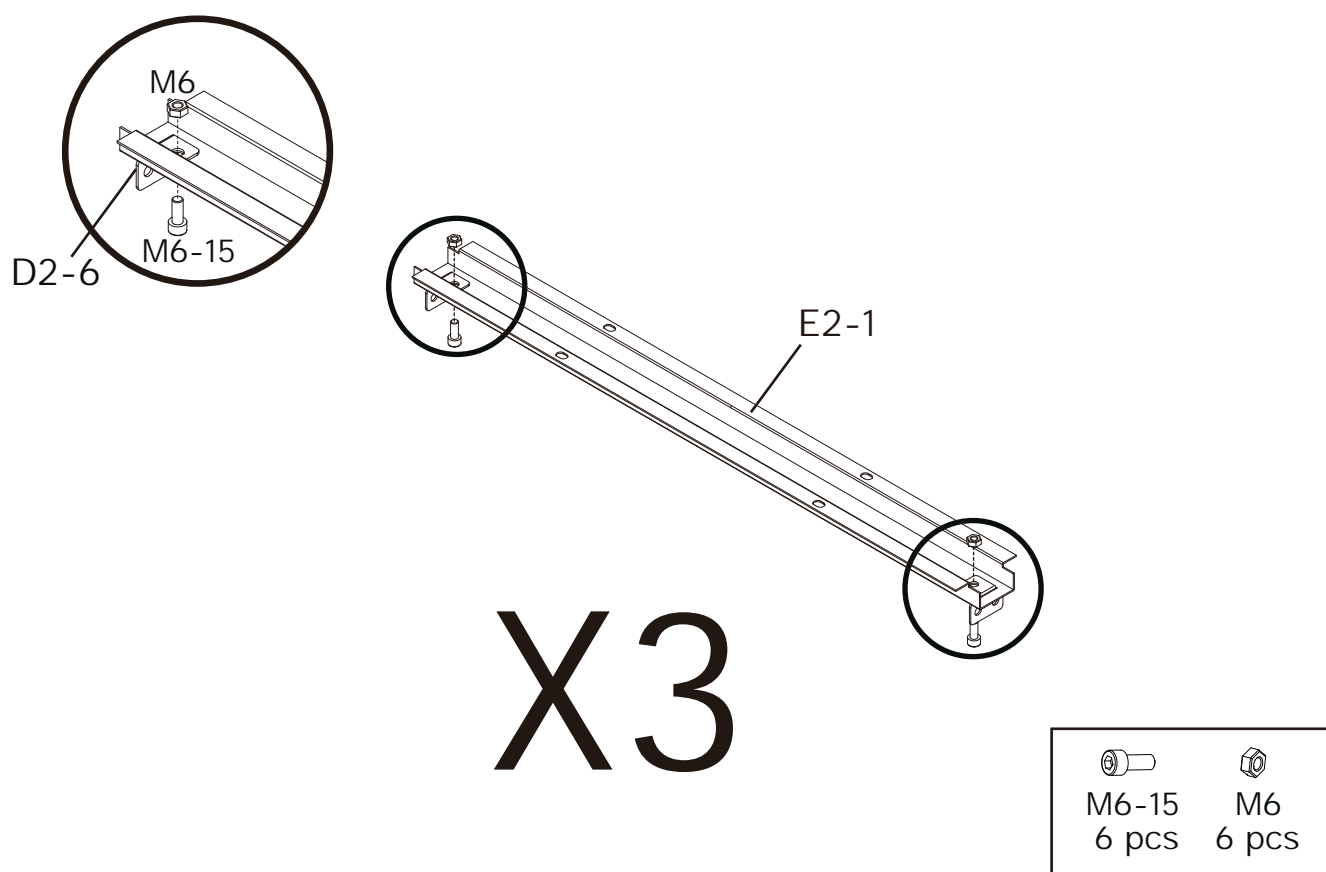


		
M6-55 4pcs	M6-15 4 pcs	M6 8 pcs

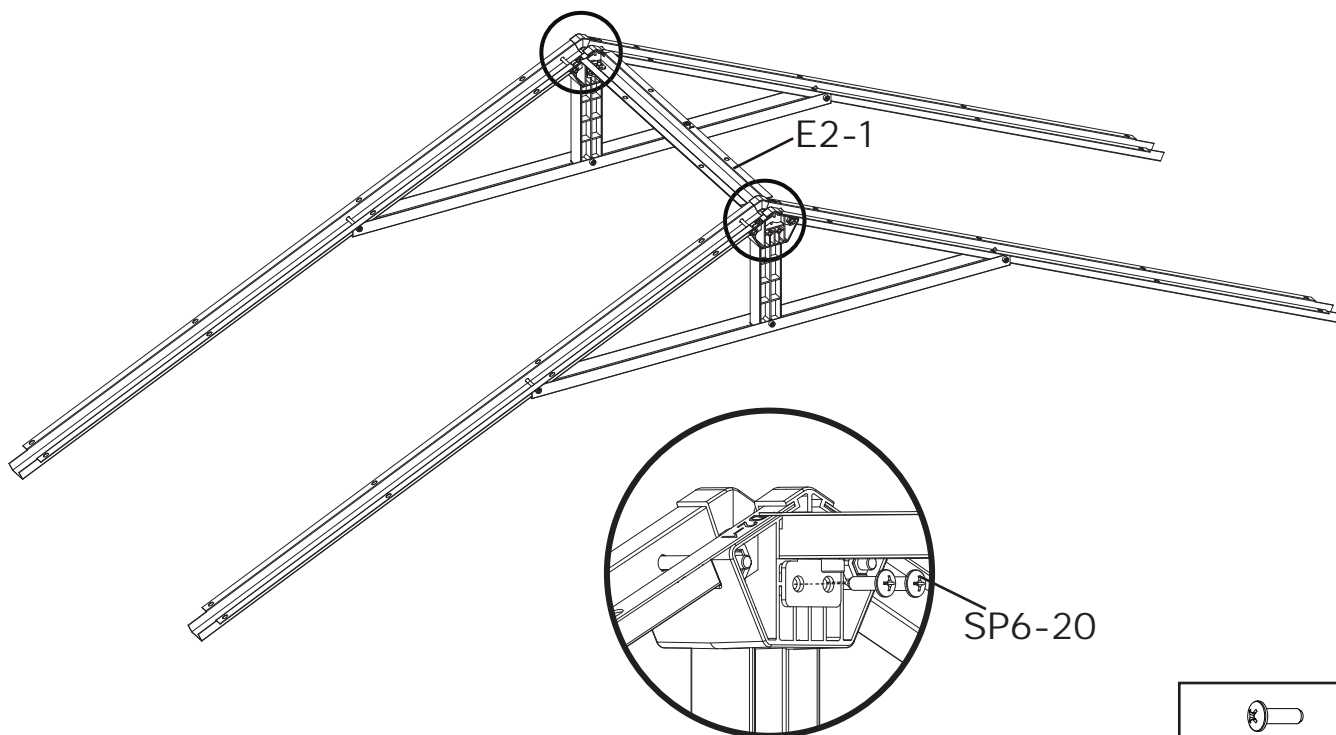
STEP 42




STEP 43

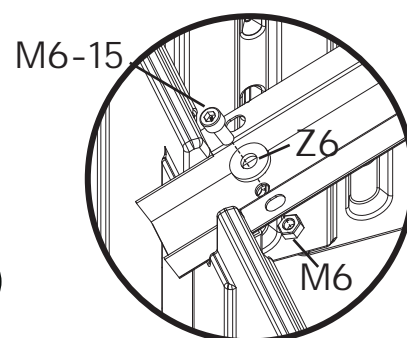
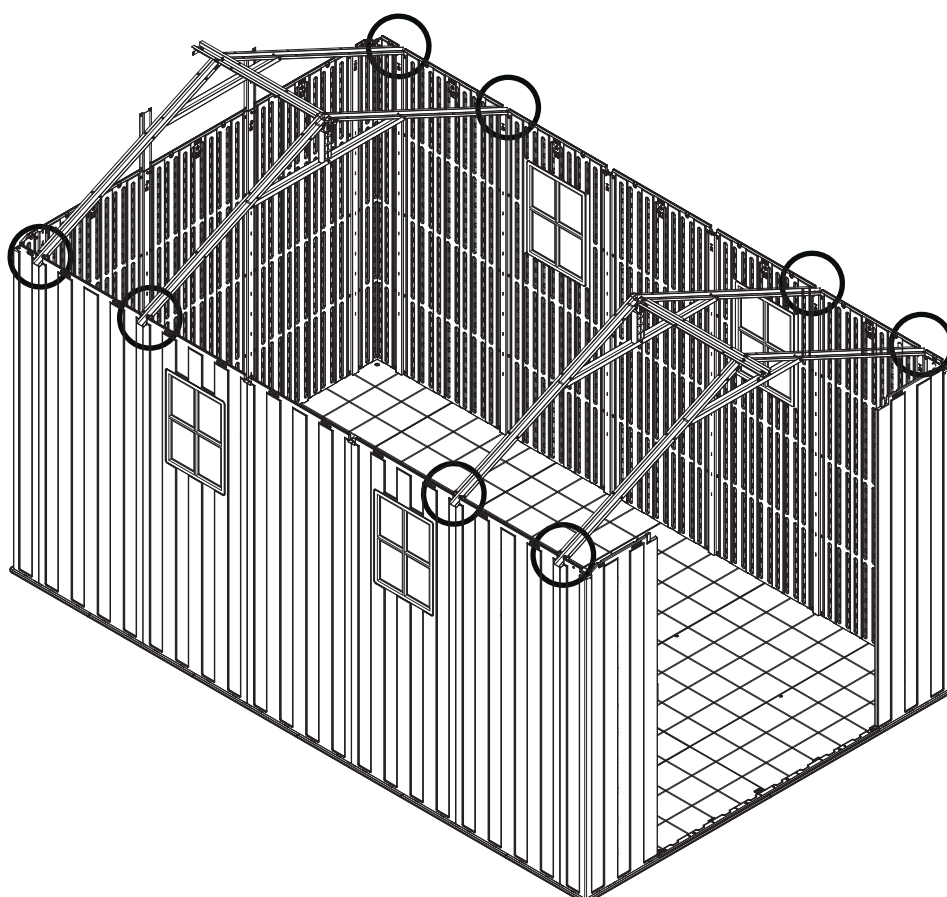





STEP 44



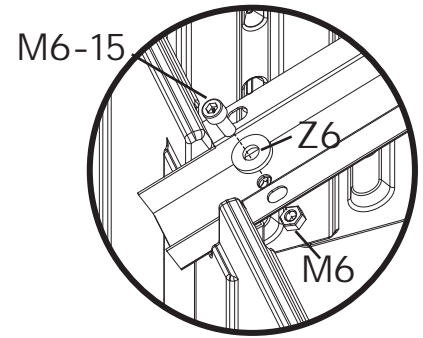
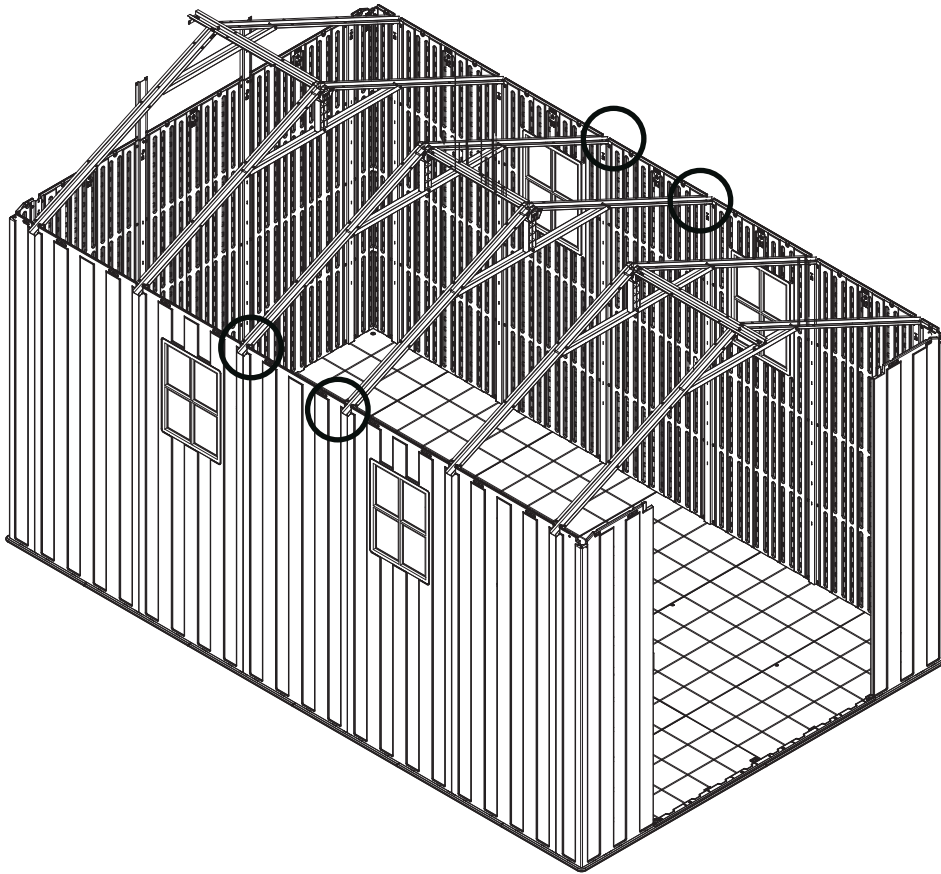

 SP6-20
 4 pcs




STEP 45



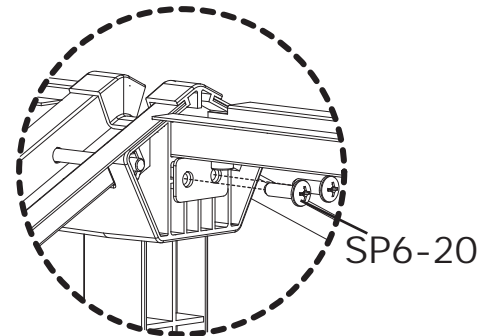
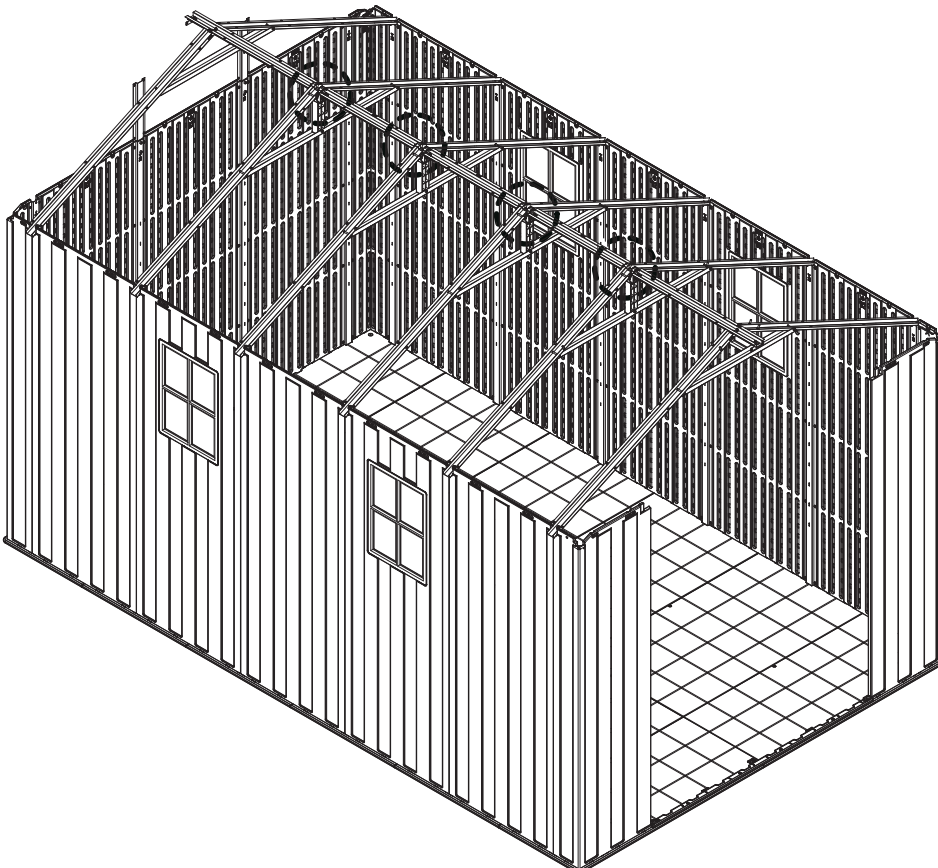
 M6-15 8 pcs	 M6 8 pcs	 Z6 8 pcs
---	--	--


STEP 46



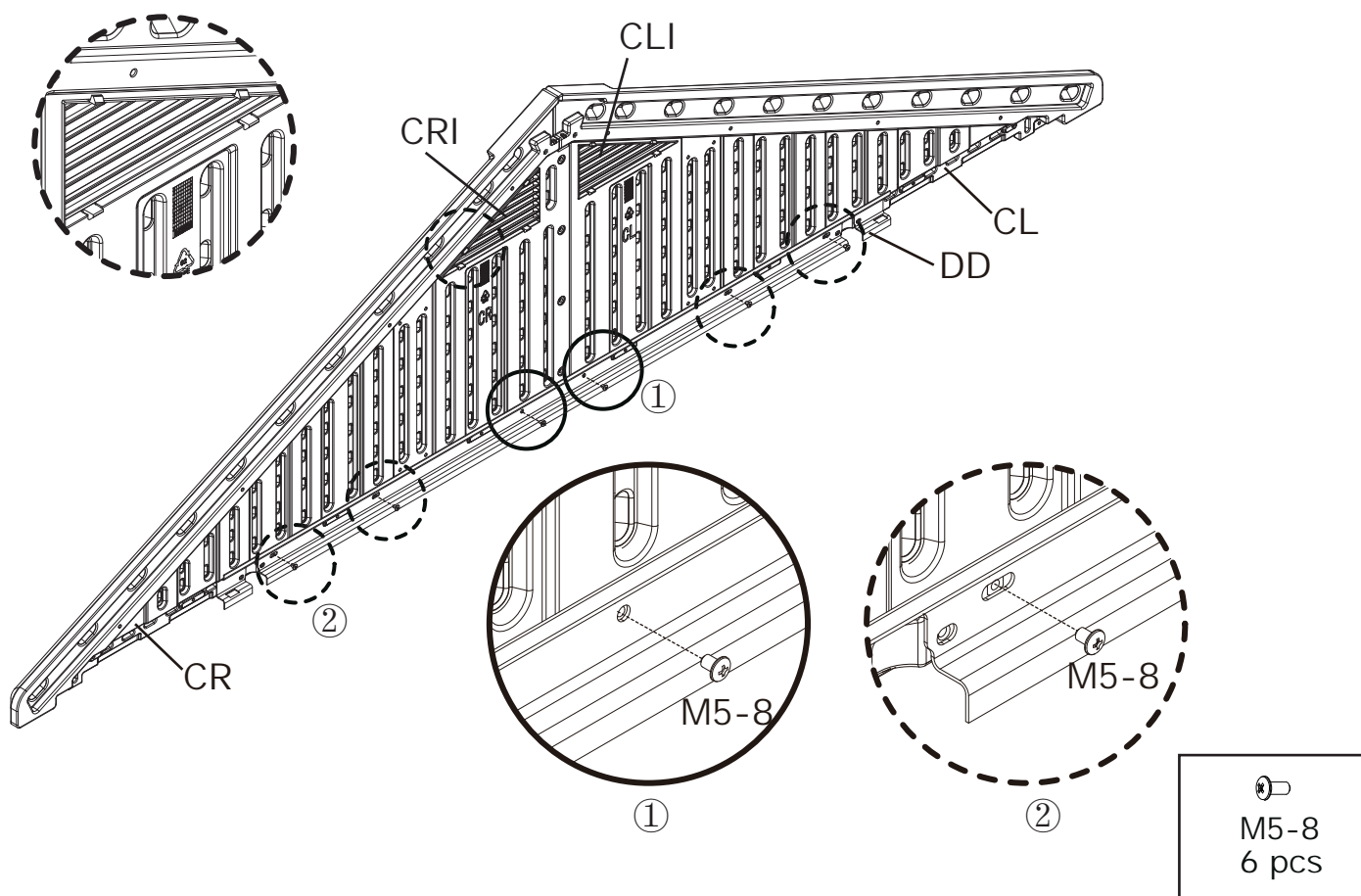
		
M6-15	M6	Z6
4 pcs	4 pcs	4 pcs

STEP 47

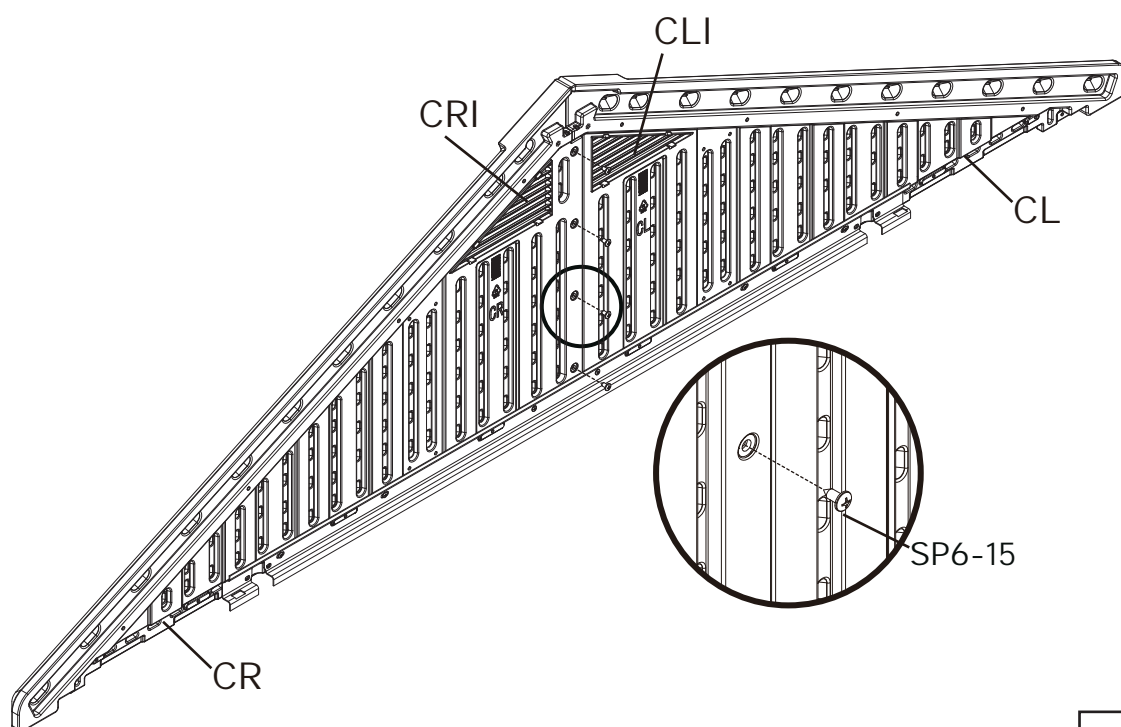



SP6-20
8pcs

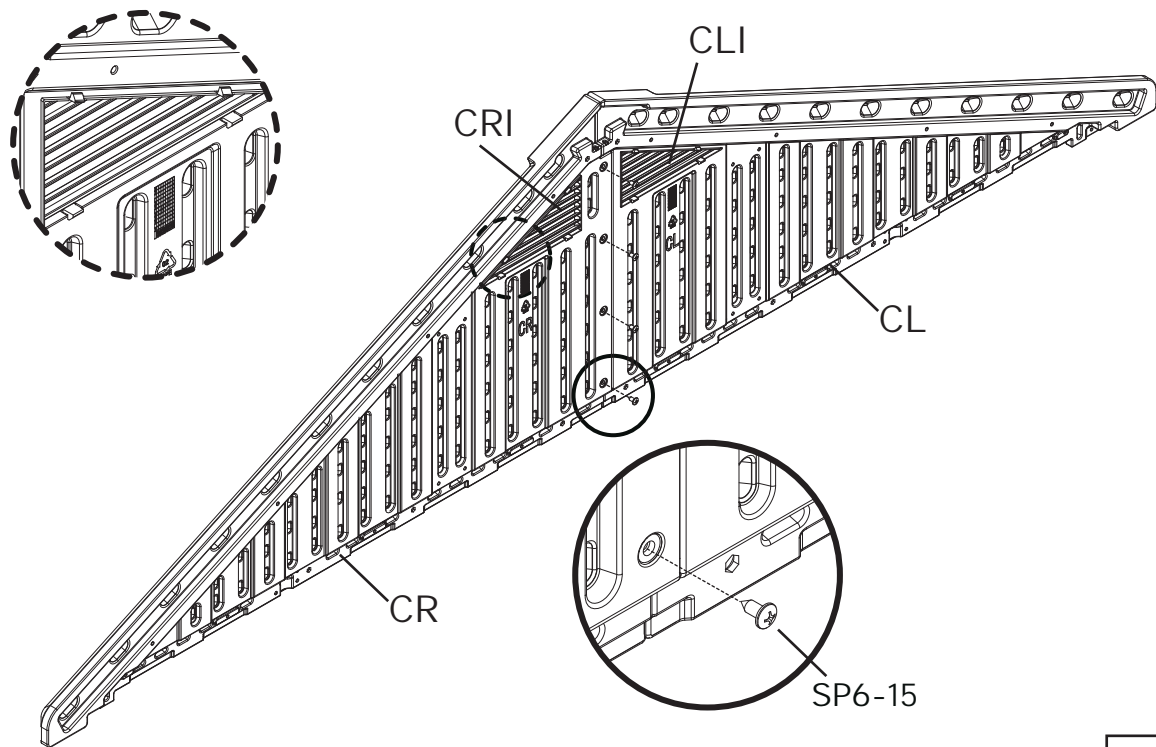
STEP 48



STEP 49

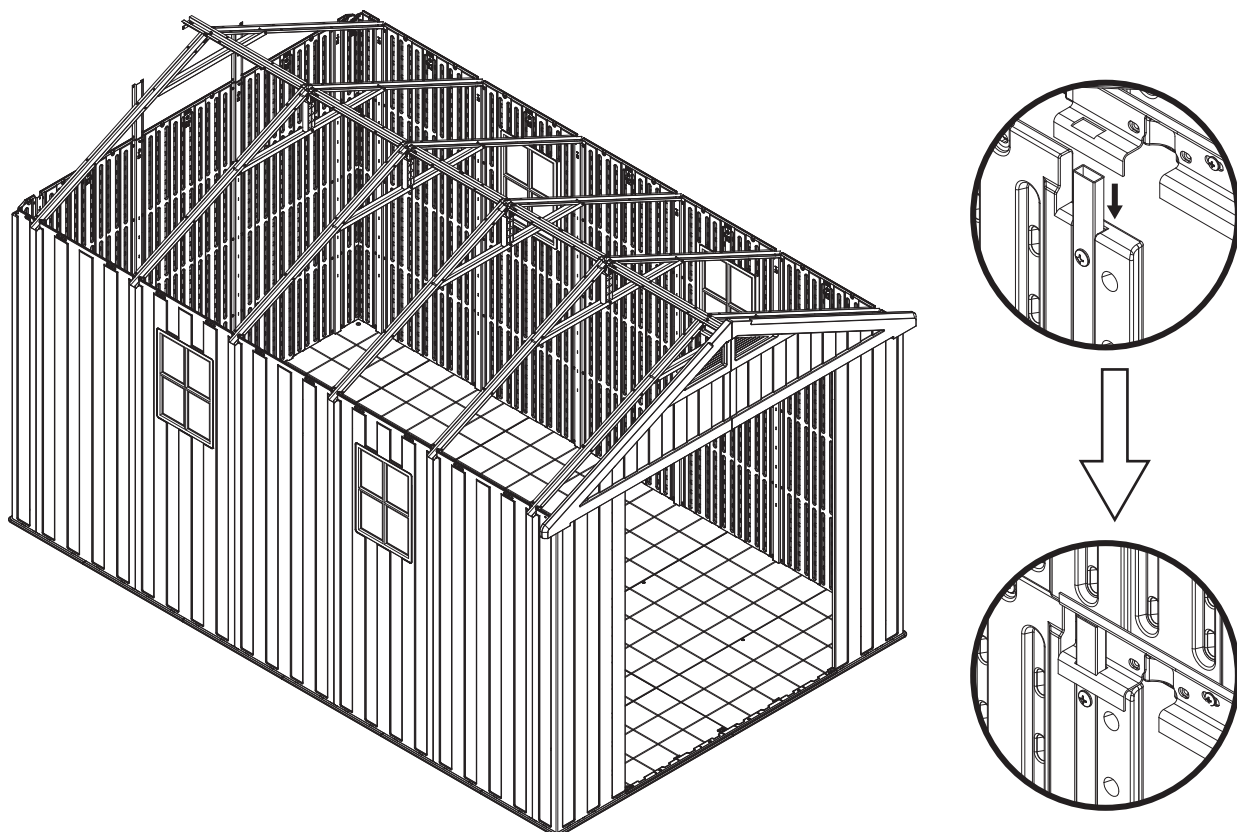


STEP 50

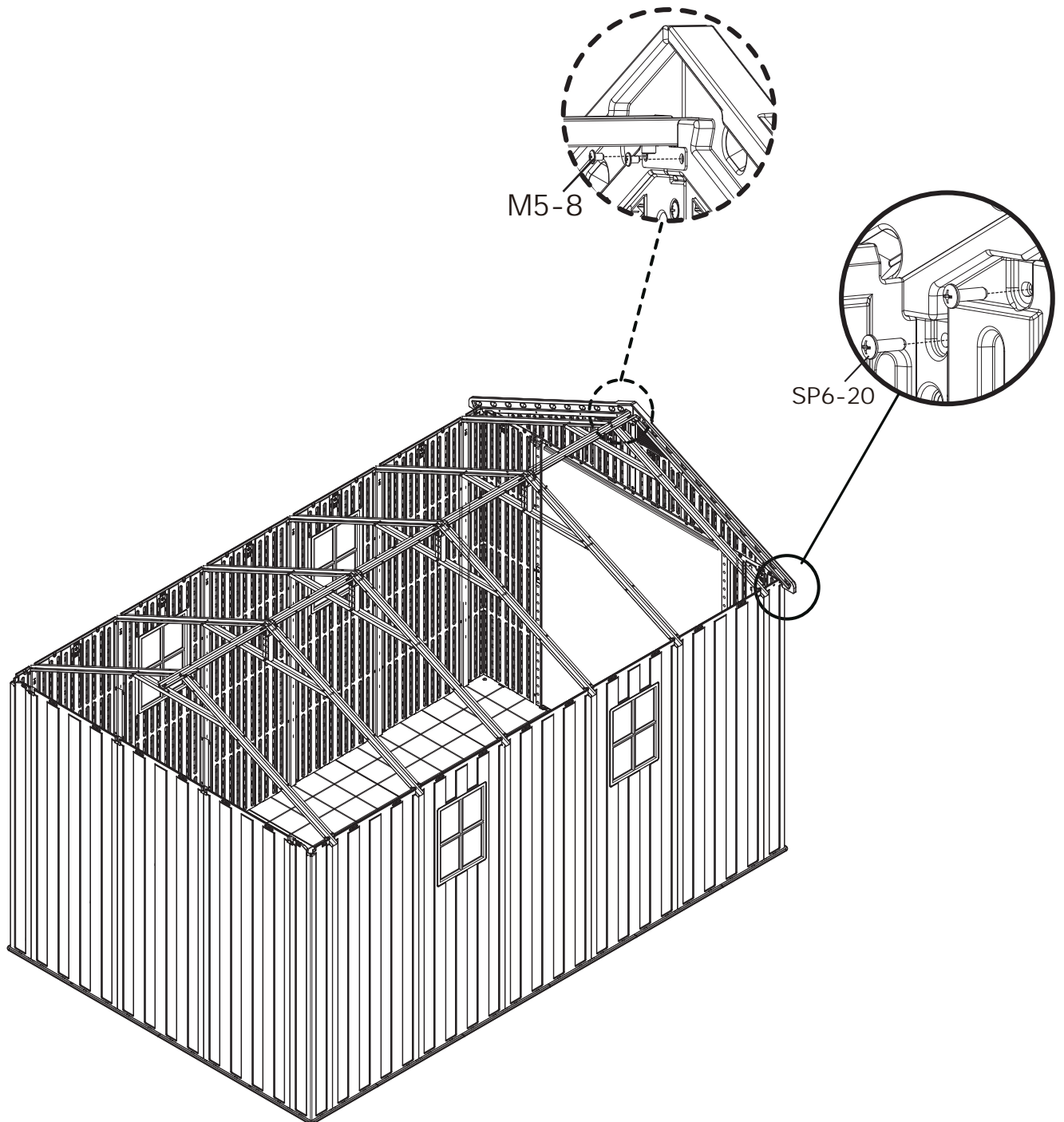




SP6-15
4pcs

STEP 51

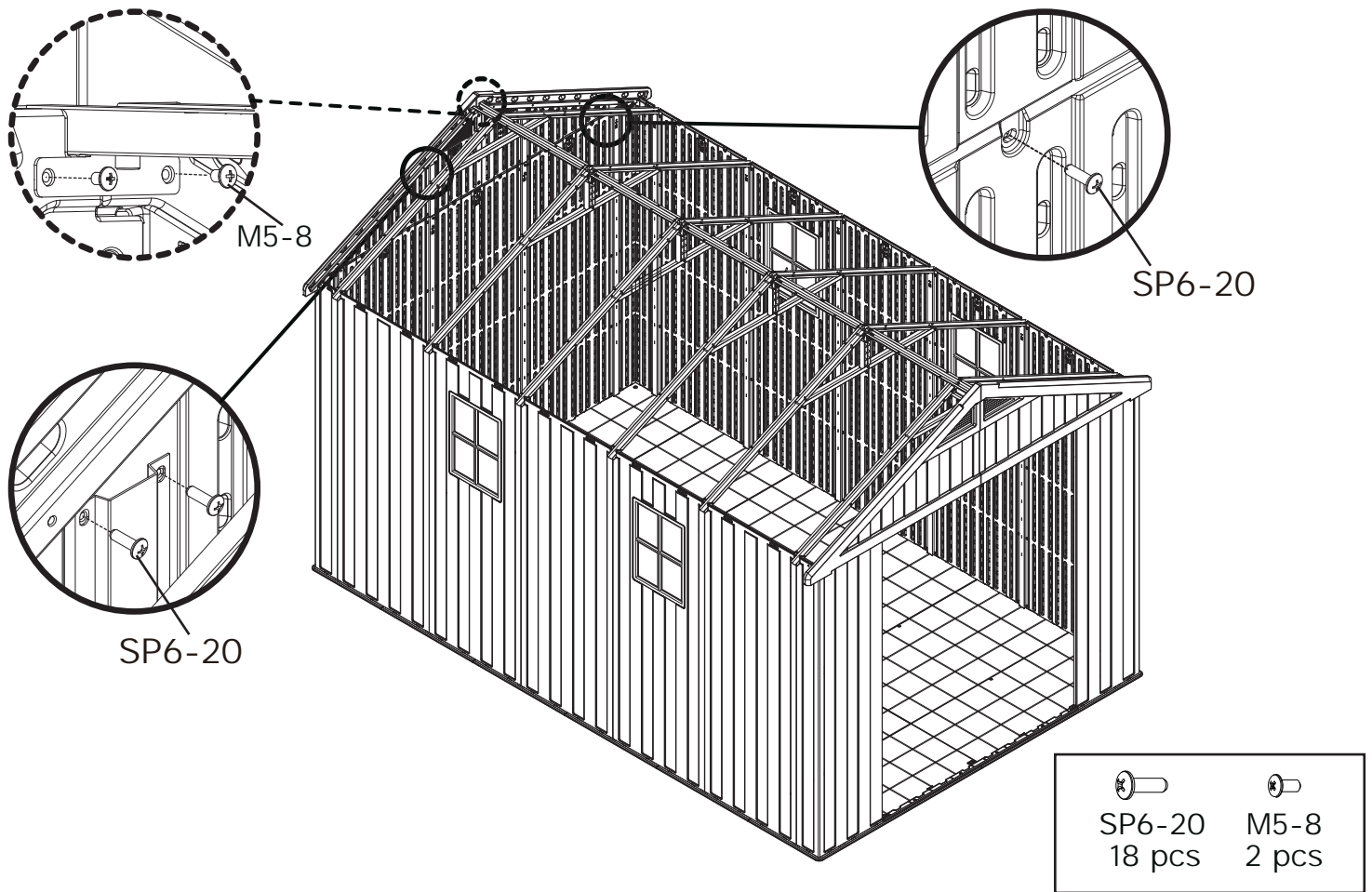


STEP 52

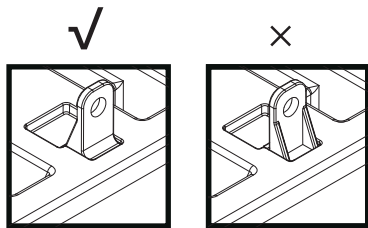


	
SP6-20	M5-8
6 pcs	2 pcs

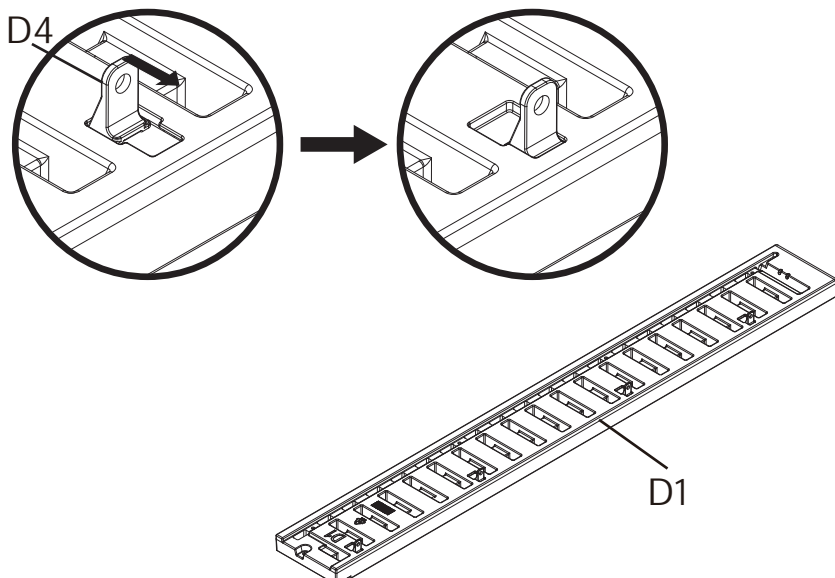
STEP 53



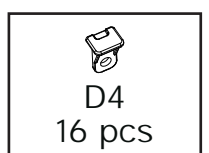
STEP 54



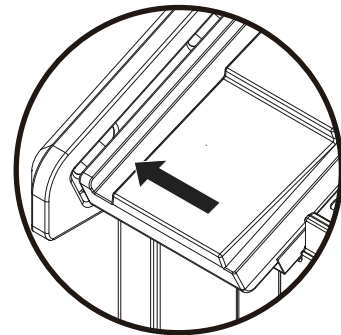
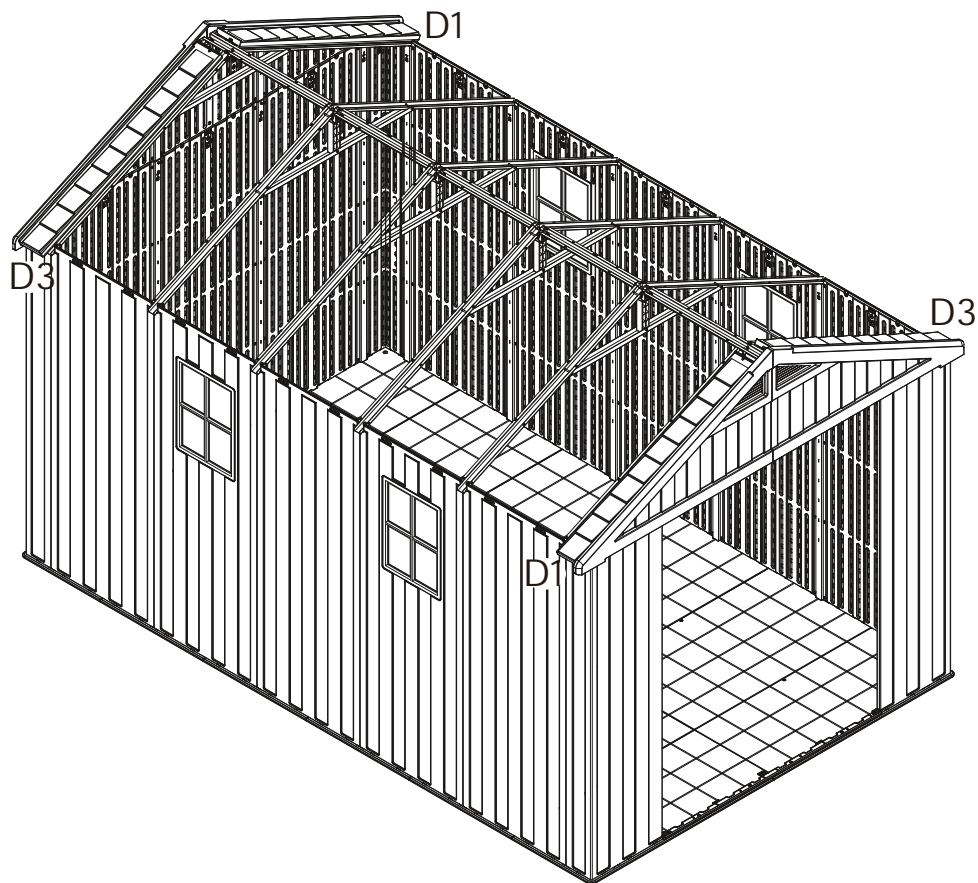
Note the mounting direction of D4.



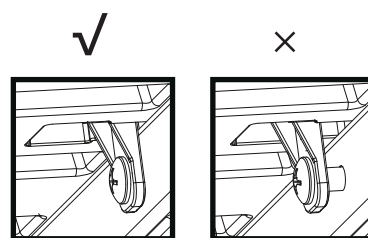
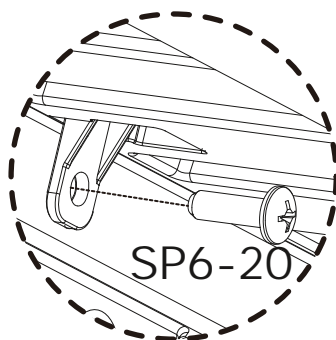
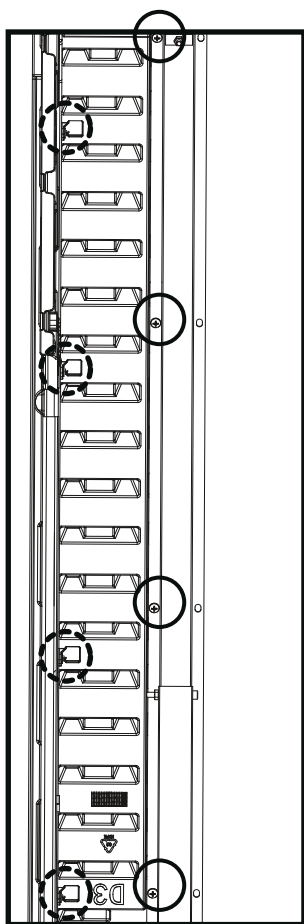
X2



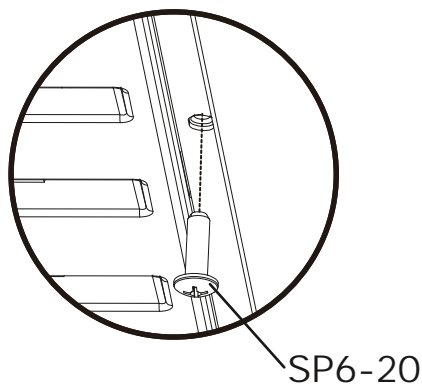
STEP 55



D1 and D3 are placed in the grooves of the iron frame, aligned with the grooves of the CL CR respectively and pushed forward.

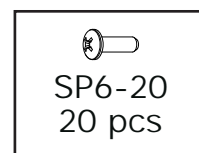
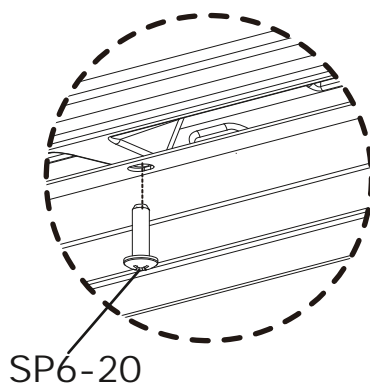
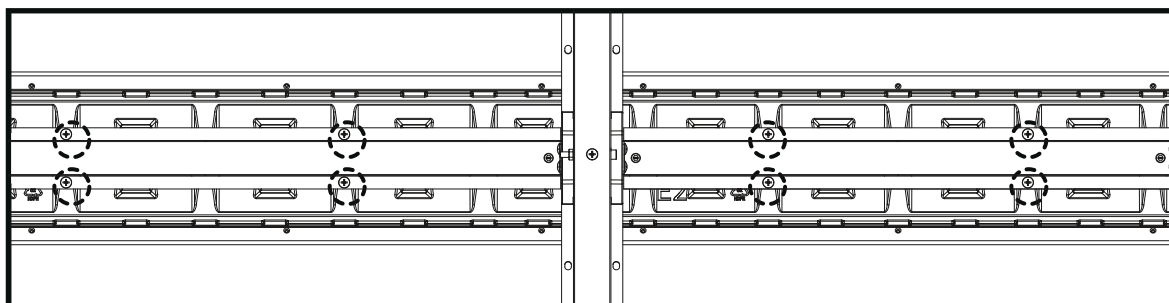
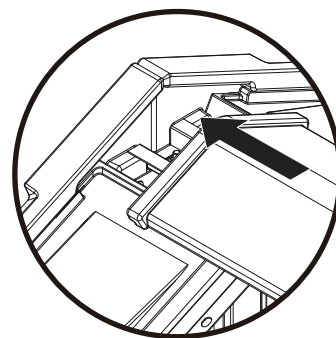
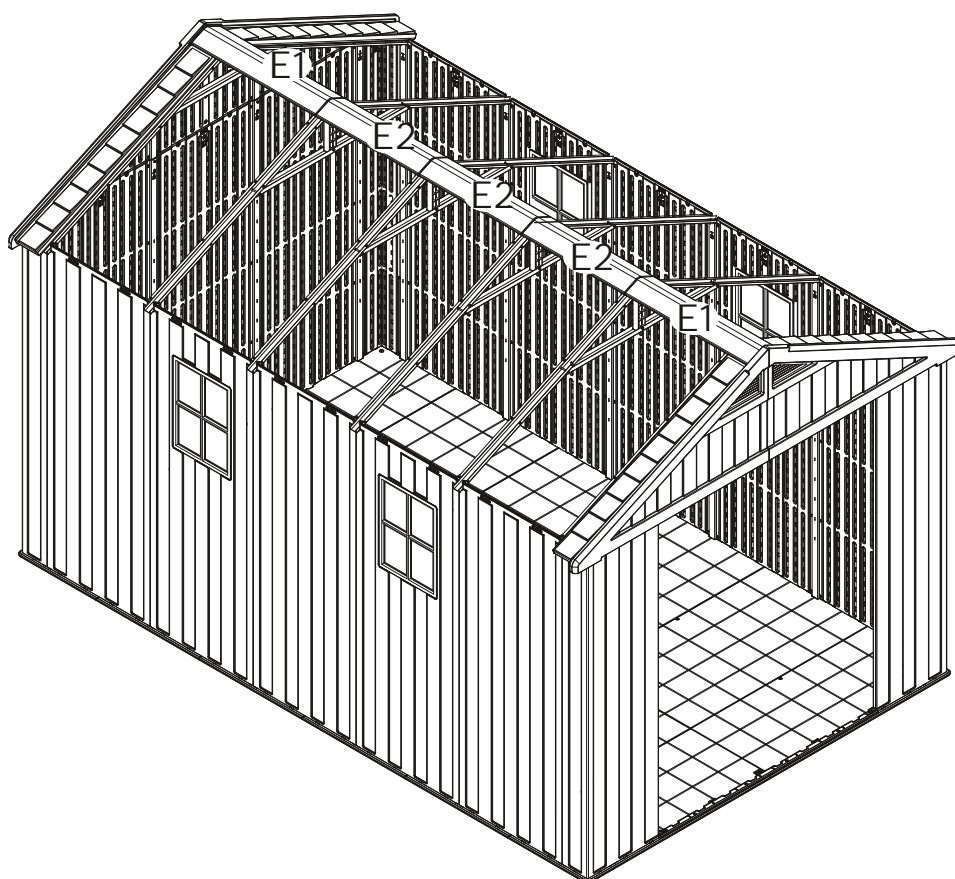


D4 should fit perfectly on the tripod.

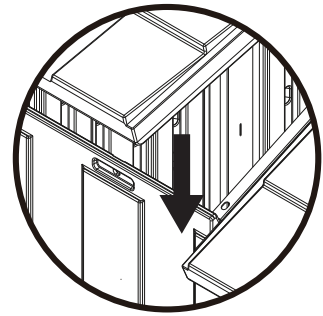
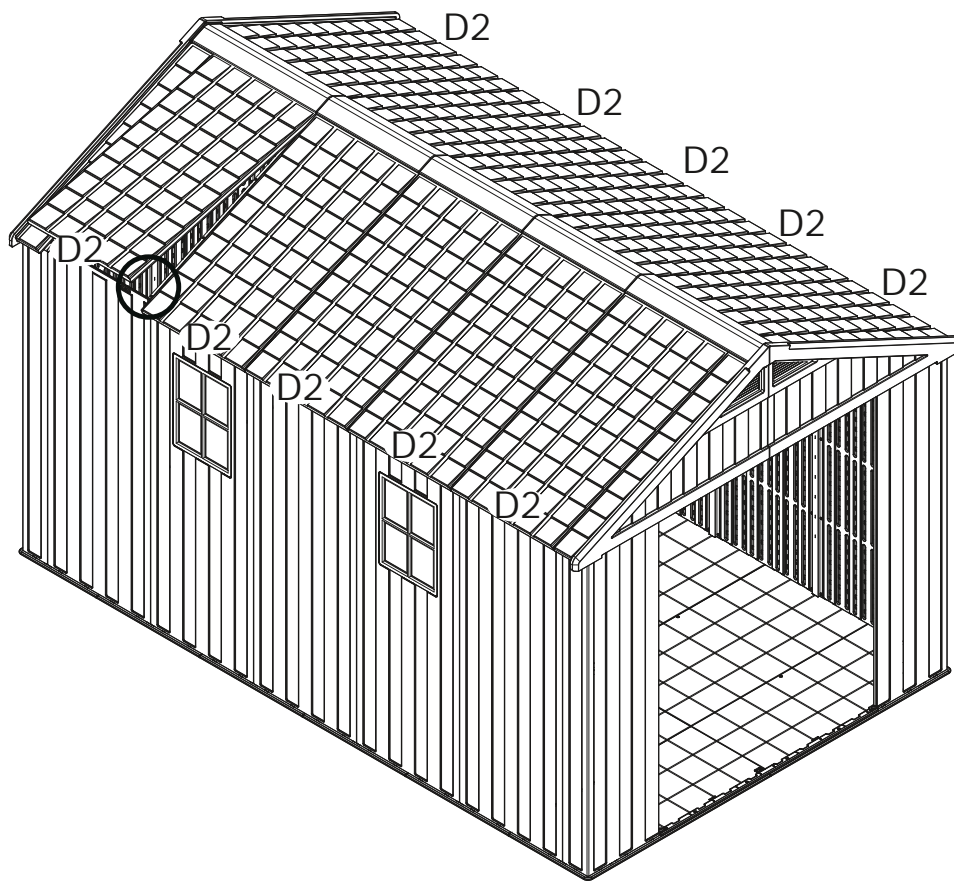


SP6-20
32 pcs

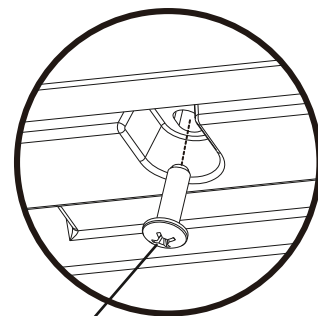
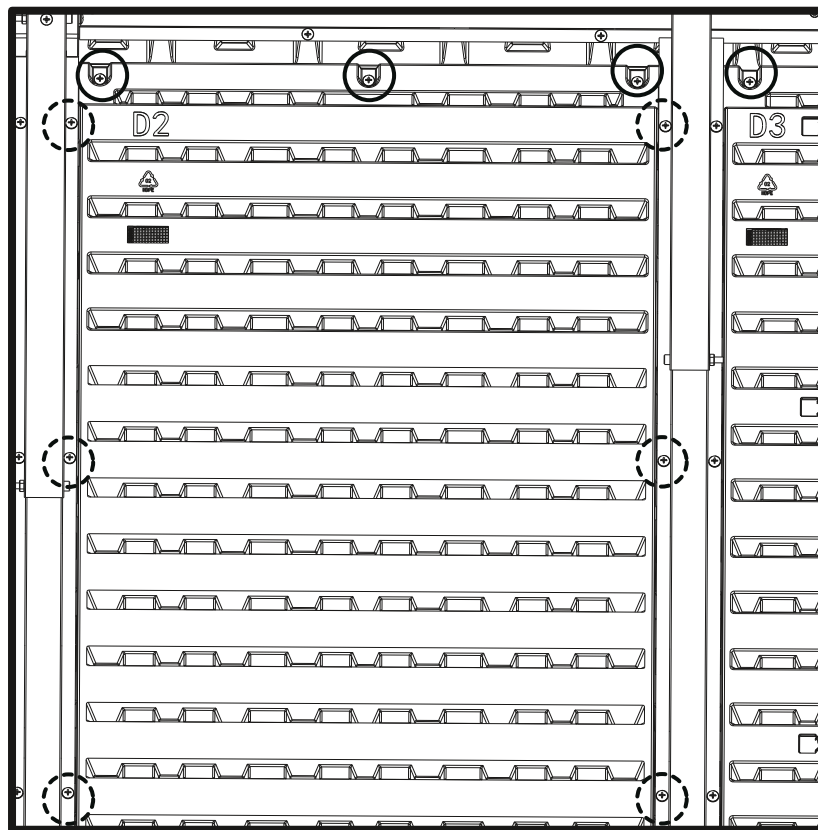
STEP 56



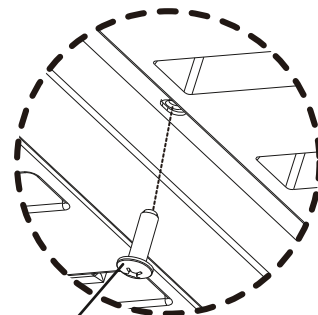
STEP 57



Tilt D2 into place, find the corresponding position and put it down.



SP6-20

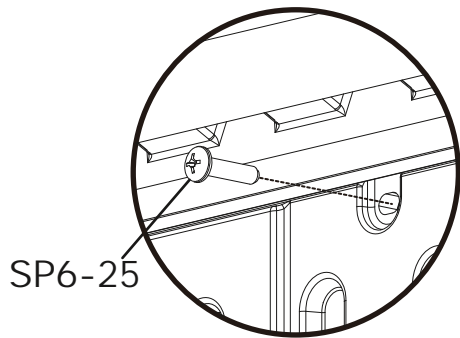
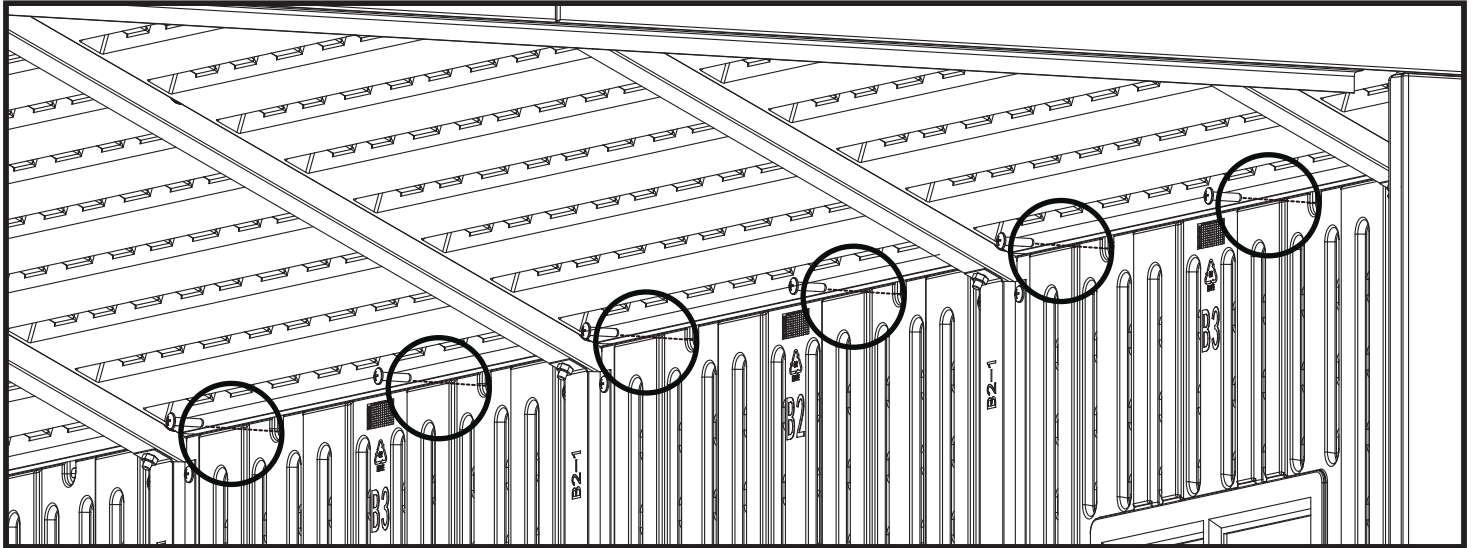


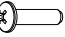
SP6-20



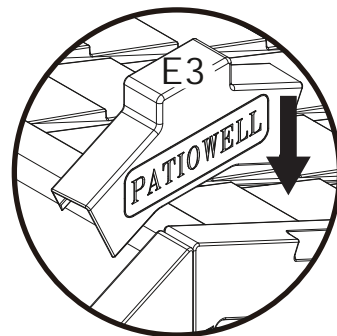
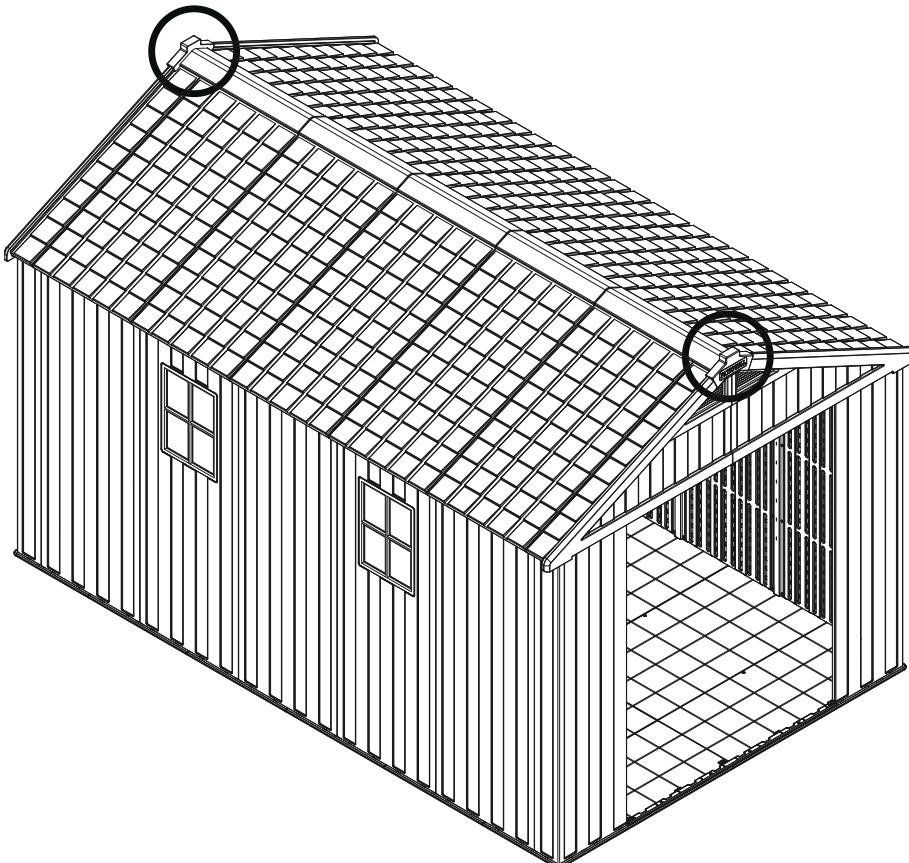
SP6-20
114 pcs

STEP 58

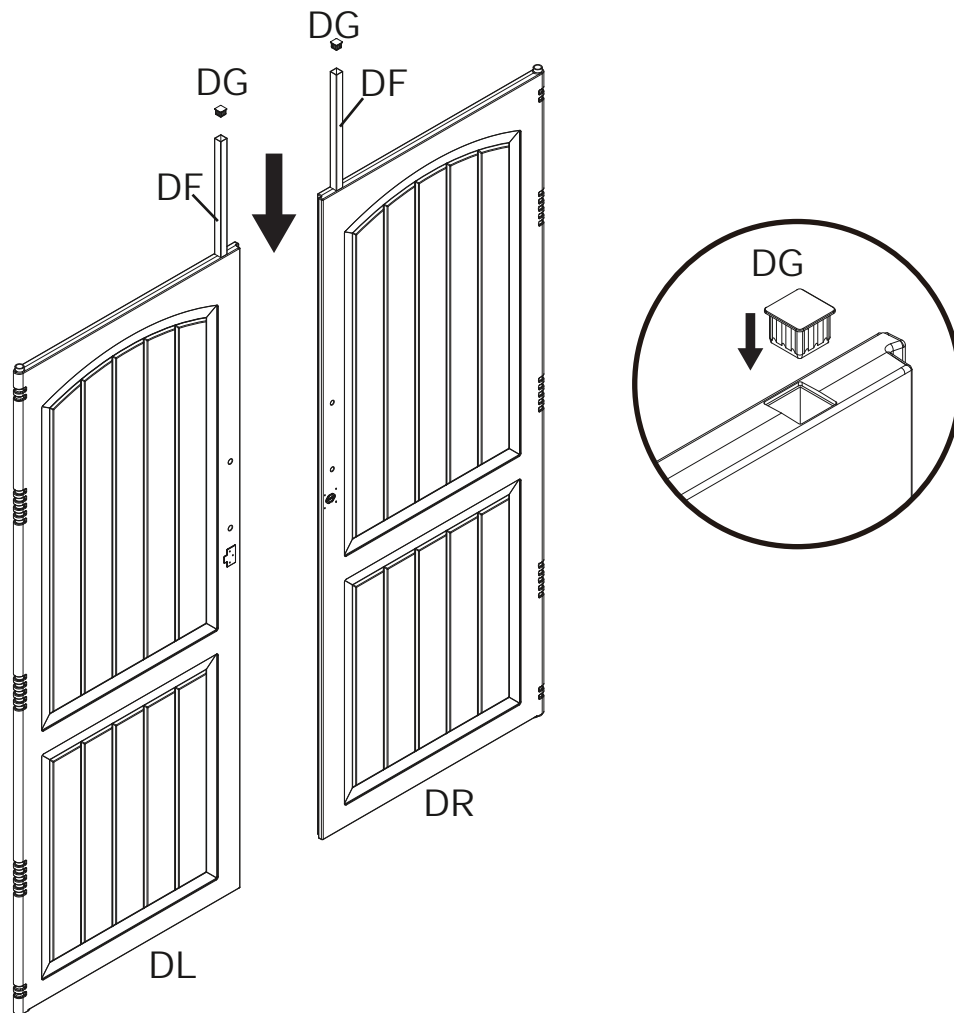



SP6-25
24 pcs

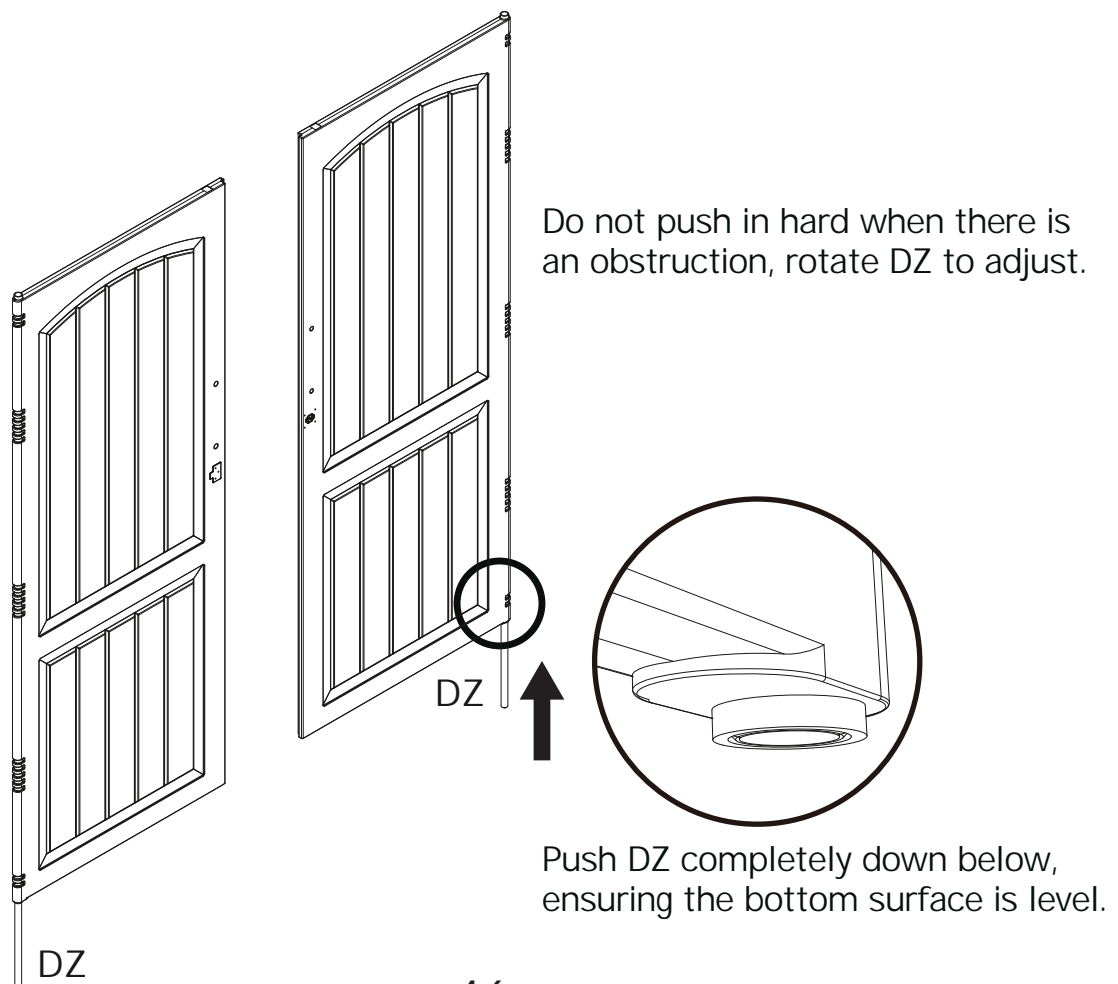
STEP 59



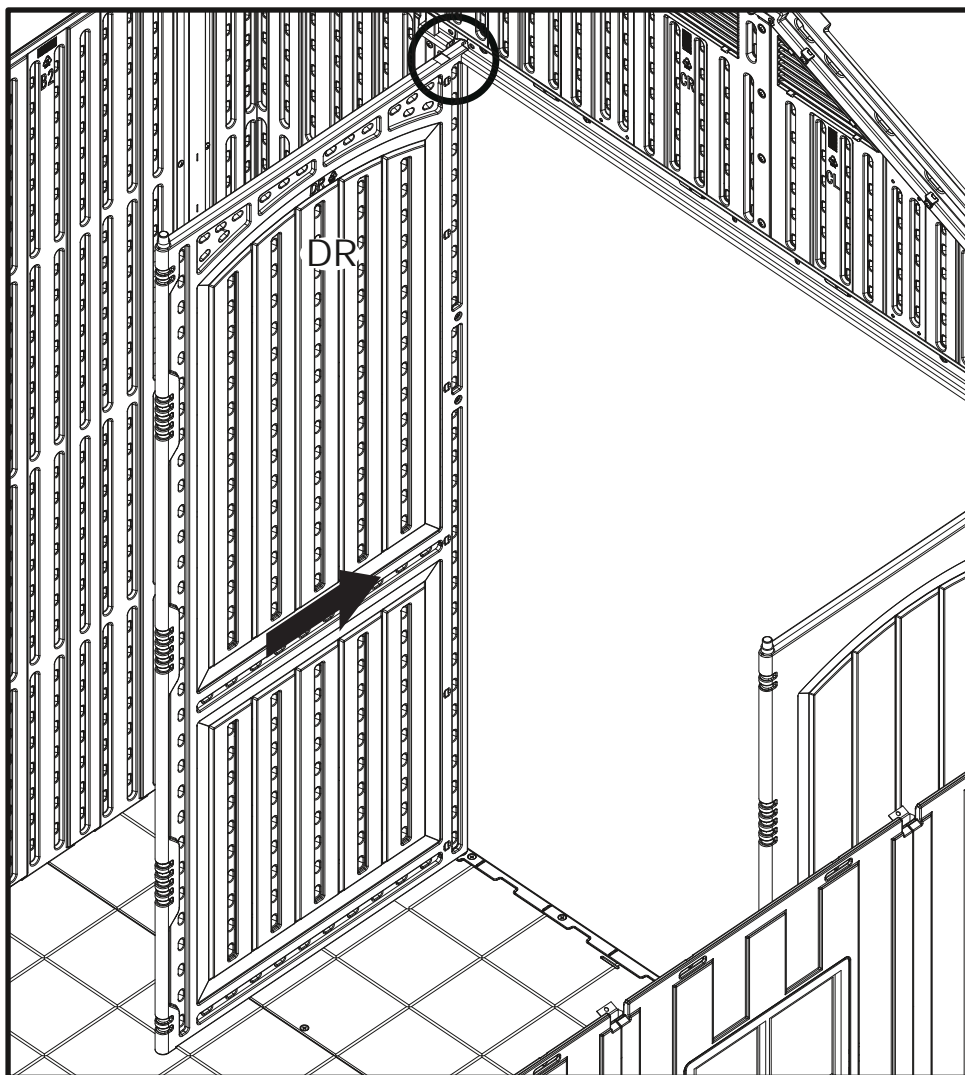
STEP 60



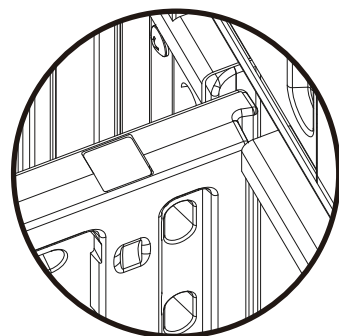
STEP 61



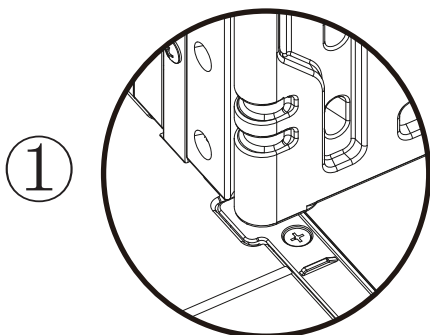
STEP 62



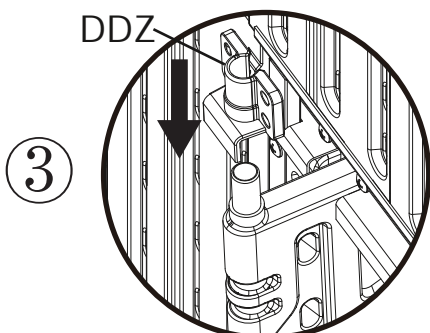
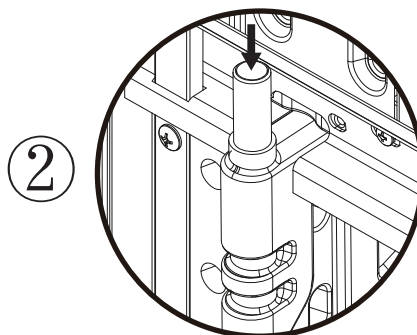
Before installation, please watch the video. Please follow the installation details in the video to avoid product damage.



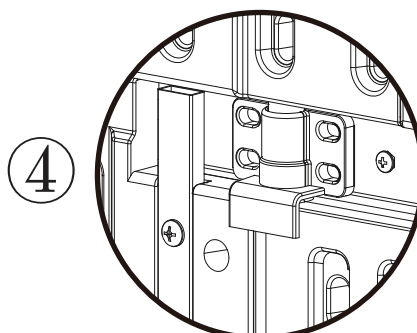
Take the DR and DL inside. Push it forward into position.



Push it into the groove of the floor. Press the DZ downwards.

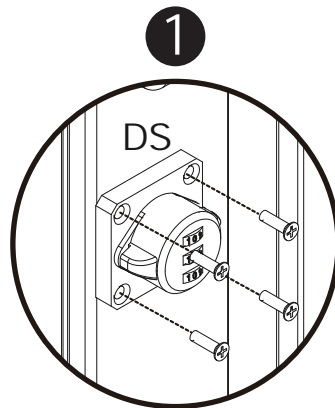
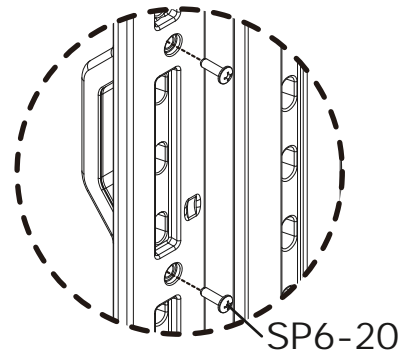
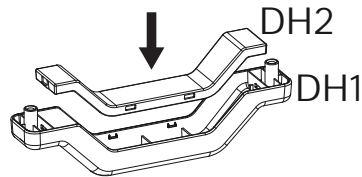
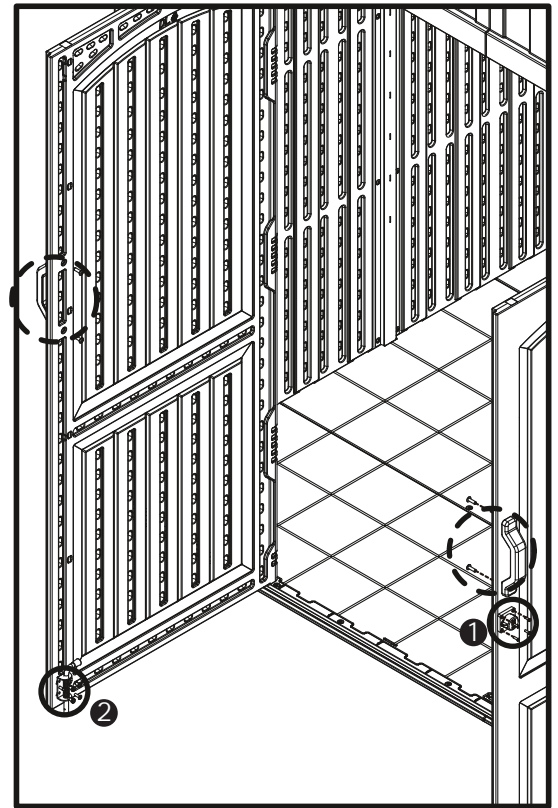
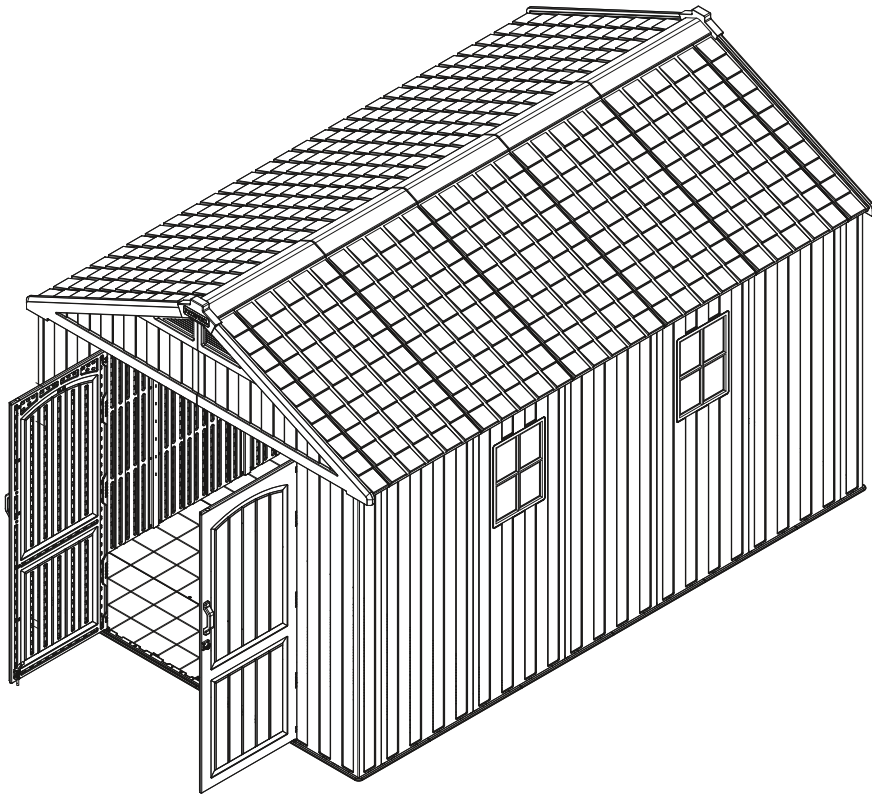


Tilting the DR and DL and snapping it into the DDZ.

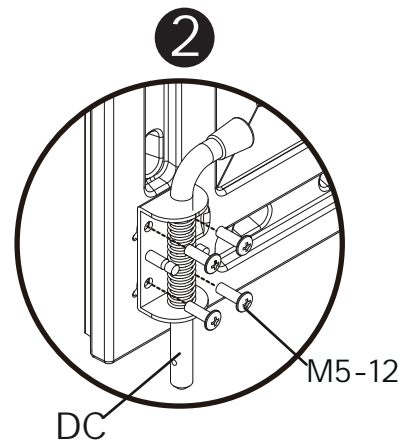




After inserting the DDZ, push the DR and DL to the fitting position.

STEP 63

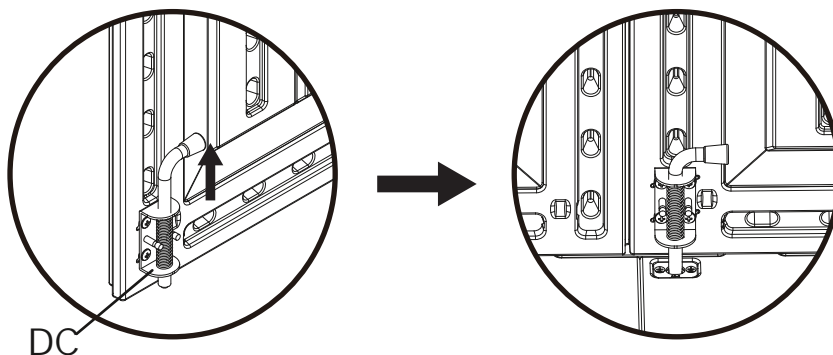
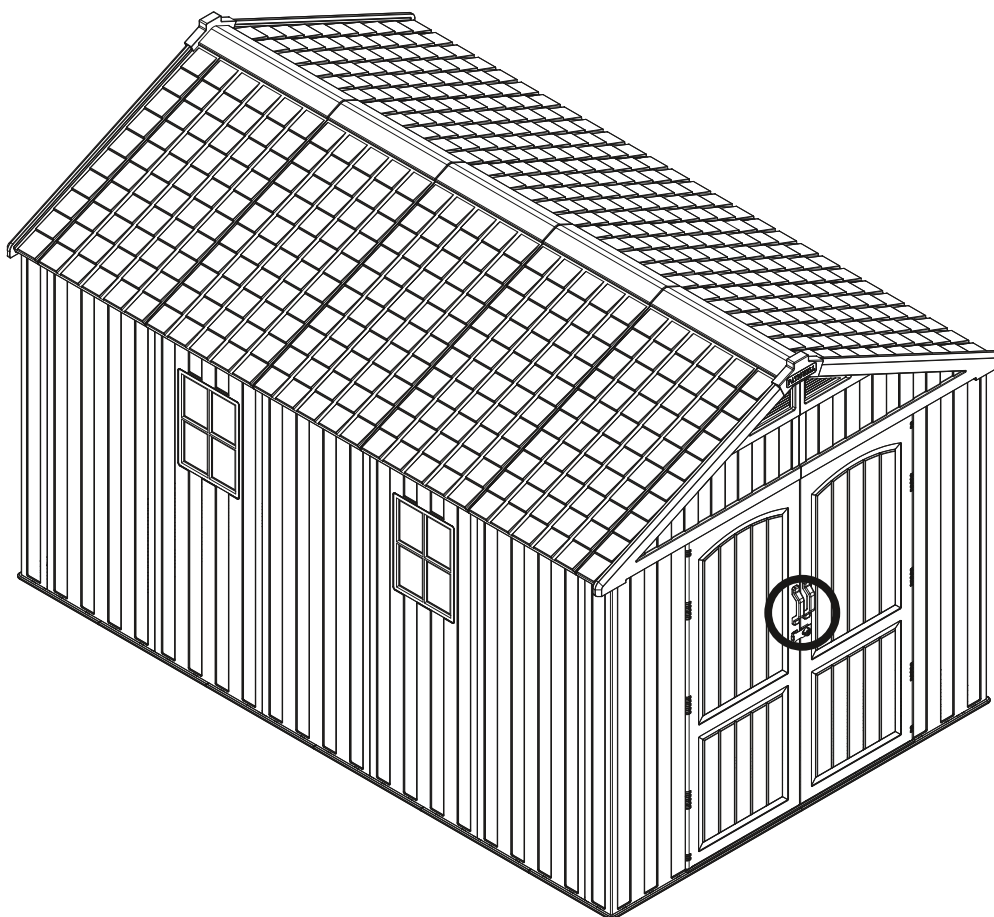


4 long screws for mounting
part DS (lock part)



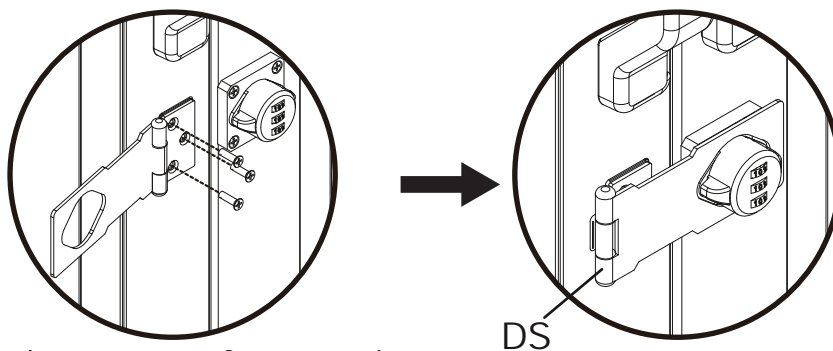
	
SP6-20	M5-12
4 pcs	4 pcs

STEP 64



DC

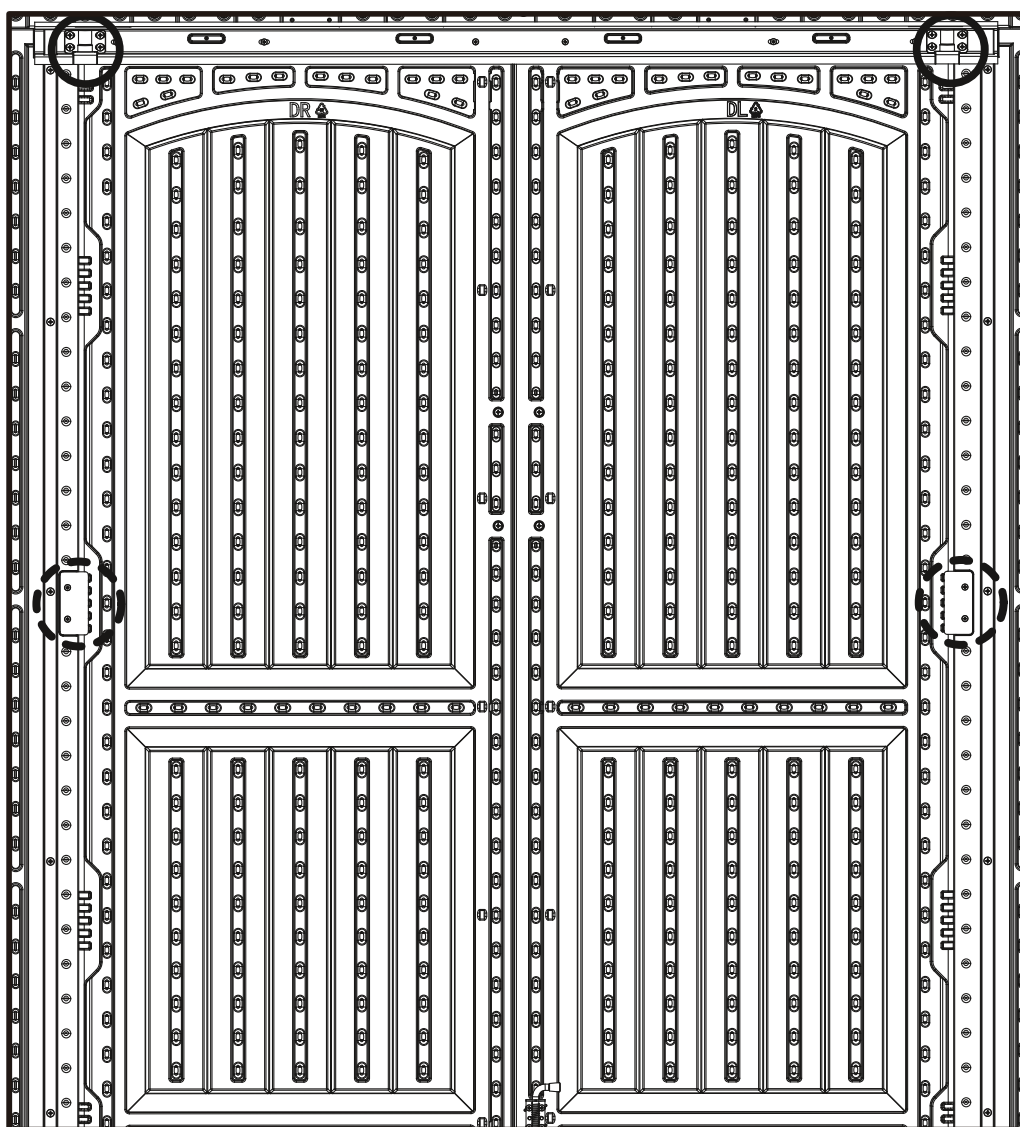
Remember to unplug the DC when closing the door and put it down when the door is closed.



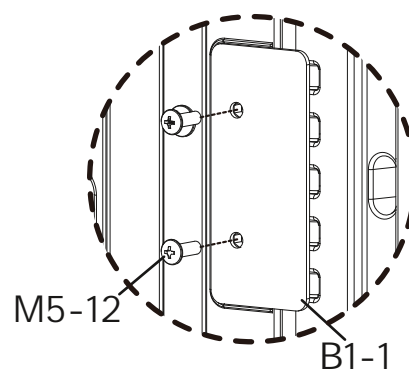
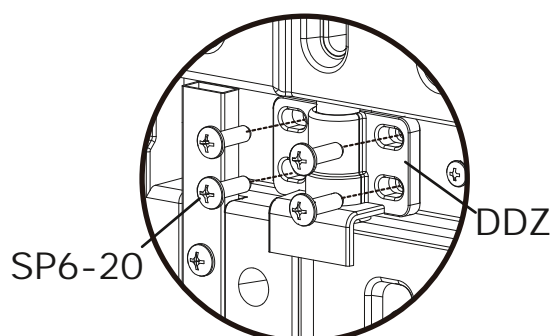
3 short screws for mounting
part DS (hinge section)



DS

STEP 65



Two people are needed. One person closes the door and inserts the pin, while the other person adjusts the gap outside the door. After making sure the gap is even, the person inside installs DDZ screws SP6-20.



	
SP6-20	M5-12
8 pcs	4 pcs

- In case of fire, do not attempt to extinguish any burning polypropylene with water. Unsuitable for storage of flammable or corrosive substances.
- It is of utmost importance to assemble all of the parts according to the directions. Do not skip any step.
- Please consult your local authorities if any permits are required to erect shed.
- Periodically check shed to assure that it remains stable and that the site remains level.
- It is highly recommended to secure the shed to an immovable object or to the ground by drilling holes in the floor at the pre-marked locations and inserting proper screws into the ground (size: 1.9"-3" ,screws are not included).
- Wear safety-goggles and always follow the manufacturer's instructions when using power tools.
- Wash shed with garden hose or a mild detergent solution. Using a stiff brush or abrasive cleaner could damage shed.
- Hot items such as recently used grills, blowtorches, etc. must not be stored in the shed.
- Heavy articles should not be leaned against the walls, as this may cause distortion.
- Keep roof clean of snow and leaves. Heavy amounts of snow on roof can damage the shed making it unsafe to enter.
- Although wind direction varies, it is an important factor when taking into account where to place your shed. Therefore, it is recommended to reduce wind exposure of the shed in general, and the door side in particular.
- Keep doors closed and locked to prevent wind damage.
- Do not stand on the roof.