

INSTALLATION INSTRUCTIONS



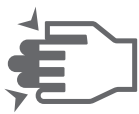
AFTER-SALES SERVICE

1. Contact Customer Service: If you discover a quality issue, please contact us
2. Provide Information: Please provide your order number, product model, and a description of the problem (photos or videos recommended)
3. Problem Diagnosis: Our customer service team will respond within 24 hours to help diagnose the issue and provide a solution
4. Repair or Replacement: Depending on the situation, we will provide:
 - Free replacement parts
 - Complete replacement (for major quality)

WARNING



Pay attention to safety.



Beware of pinching hazards.



Adult assembly only.

Important!

Assembly must be performed by adults only. Keep children away to prevent injury or accidental swallowing of screws and small hardware parts.

HANDLING AND STORAGE

1. For long-distance transportation, the product should be packed in its outer packaging. Handle with care.
2. The desk and chair should be cleaned and maintained regularly to keep them neat and clean.
3. If not used for a long time, cover it with a dust cover and store it indoors in a dry environment.

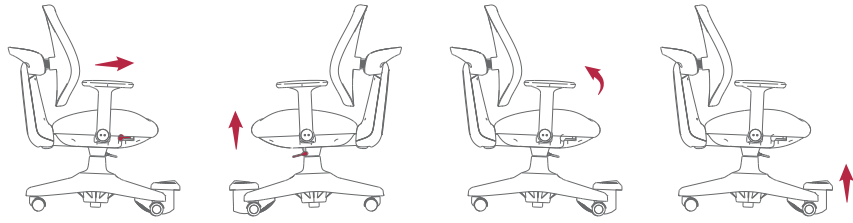
CHARACTERISTICS AND PARAMETERS

Feature	Principle	Specification
Seat height adjustment	Adjust the seat to a suitable position through the adjustment mechanism and lock it.	16.3-20.9 in
Footrest height adjustment (optional)	Pull the footrest to adjust its position and lock it.	5.5-7.5 in
Angle adjustment / backrest adjustment	Adjust the backrest to a suitable position through the adjustment mechanism and lock it.	8.1-15.4 in
Overall dimensions	—	(25.6-29.9)x(23.6)x(33.3-38.0) in

MAIN MATERIAL

Main material	Application area	Characteristics
Textile fabric	Backrest, seat cushion	High eco-friendly grade, scratch-resistant, easy to clean, strong load-bearing and deformation resistance
Foam	Backrest	Good elasticity, comfortable, not easy to deform
Foam	Seat cushion	Good elasticity, comfortable, not easy to deform
Plastic parts	Chair legs, armrests	Strong toughness, impact-resistant
Carbon steel	Support post	Not easy to rust, corrosion-resistant, good gloss, strong load-bearing capacity
Powder coating	Surface treatment for metal parts	Long-lasting color, not easy to fade

ADJUSTMENT METHODS



●**Base adjustment:** Adjust the Backrest to a suitable position through the adjustment mechanism and lock it.

●**Seat height adjustment:** Adjust the seat height through the adjustment mechanism and lock it.

●**Armrest angle adjustment:** Hold the armrest and rotate it backward.

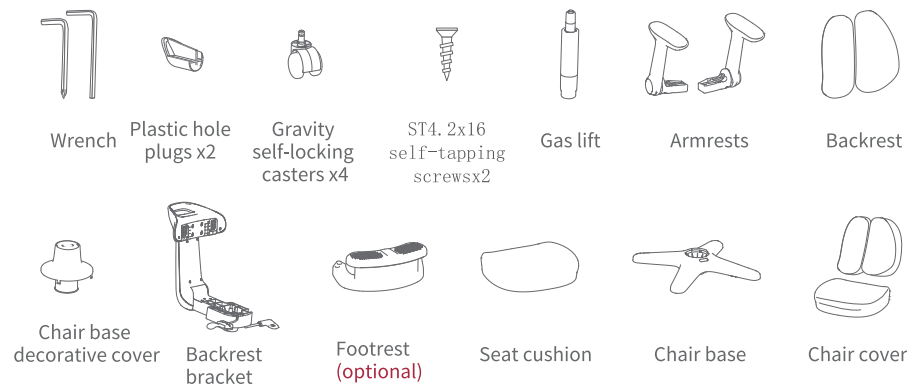
●**Footrest angle/height adjustment (optional):** Adjust the footrest height by lifting upward.

Note: To lower the footrest, pull the footrest to the highest position first, then return it to the lowest position.

TROUBLE SHOOTING

Issue	Cause	Solution
Seat wobbles after installation	The bolts under the seat cushion are not tightened properly	Tighten the bolts under the seat cushion
Footrest wobbles after installation	The bolts under the footrest are not tightened properly	Tighten the bolts under the footrest

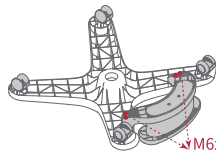
PART DETAILS



PRODUCT OVERVIEW

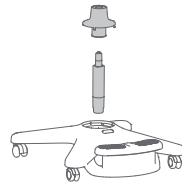
Item	Content
Product name	Kids Study Chair
Main purpose and scope	Suitable for children aged 3 and above(must be used under adultsupervision). Suitable for height 39.4-70.9 in. For reading, writing,drawing, and handicrafts.
Environment of use	Indoor use only.
Environmental impact	None.
Safety	Do not disassemble any parts to avoid accidental

INSTALLATION STEPS



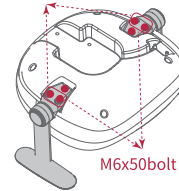
01 Insert the gravity self-locking casters into the positions shown on the chair base. Remove the bolt at the indicated position, and use it to secure the footrest onto the chair base assembly.

Note: If the footrest is not included (optional), skip the



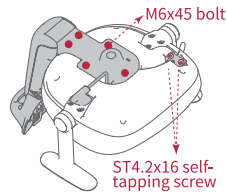
02 Insert the gas lift into the chair base, then snap the decorative cover onto the chair base.

Install the bolts inside the boxed area first

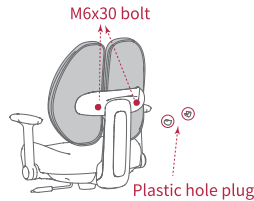


03 Remove the bolts at the indicated positions and use them to secure the armrests to the seat cushion assembly.

Note: Install the bolts on both sides first, then install the inner bolts.



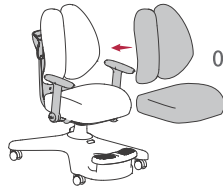
04 Remove the bolts at the indicated positions, and use them together with two ST4.2x16 self-tapping screws to secure the backrest bracket to the seat cushion assembly.



05 Remove the bolts behind the backrest and use them to secure the backrest to the backrest bracket. Then insert the plastic hole plugs.



06 Insert the assembly from Step 5 into the assembly from Step 2. Installation is complete.



07 Fit the backrest cover and chair cover smoothly over the chair.



08 Gravity self-locking caster ON/OFF:
When sitting, the casters lock automatically and the chair cannot be moved.
When standing up, the lock is released automatically and the chair can be moved freely.

PRODUCT MAINTENANCE

1. Do not use highly corrosive cleaners (bathroom cleaners, oven cleaners, metal cleaners, bleach, etc.).
2. Do not scratch the chair with sharp or hard objects. Damage caused by this will not be covered by after-sales service.
3. Optional chair covers are available. It is recommended to use a suitable cover together with the chair.
4. For cleaning: remove dust first, then wipe gently with a dry towel or soft cotton cloth to avoid scratching. For ink, stamp pad, adhesive residue, and other stubborn stains, use a professional furniture cleaner.
5. For chair legs, wipe with a soft dry cloth. Do not use cleaning agents.
6. Avoid direct sunlight and long-term strong lighting to prevent fading or material deterioration.
7. For indoor use only. Do not use outdoors or in high-temperature/humid places.
8. Use only after all screws and parts are fully tightened. Check and tighten screws and parts at least every three months.

PRECAUTIONS

1. Use the chair only after fully understanding the operating methods.
2. Use properly. Do not stand or lie on the chair. Do not use it as a ladder or for other purposes.
3. Do not force-push the chair while someone is sitting on it.
4. Do not play or roughhouse on the chair.
5. Do not sit cross-legged on the chair to avoid slipping and falling.
6. Do not lean on the chair while standing, to avoid injury due to chair sliding.
7. Use only after all screws and parts are fully tightened. Check and tighten screws and parts at least every three months.
8. If parts are missing, damaged, or worn, stop using immediately and contact after-sales service.
9. Do not sit anywhere other than the seat cushion area.
10. This product is designed for one person only. One person at a time.
11. Keep away from open flames to prevent fire.
12. Children must use under adult supervision.